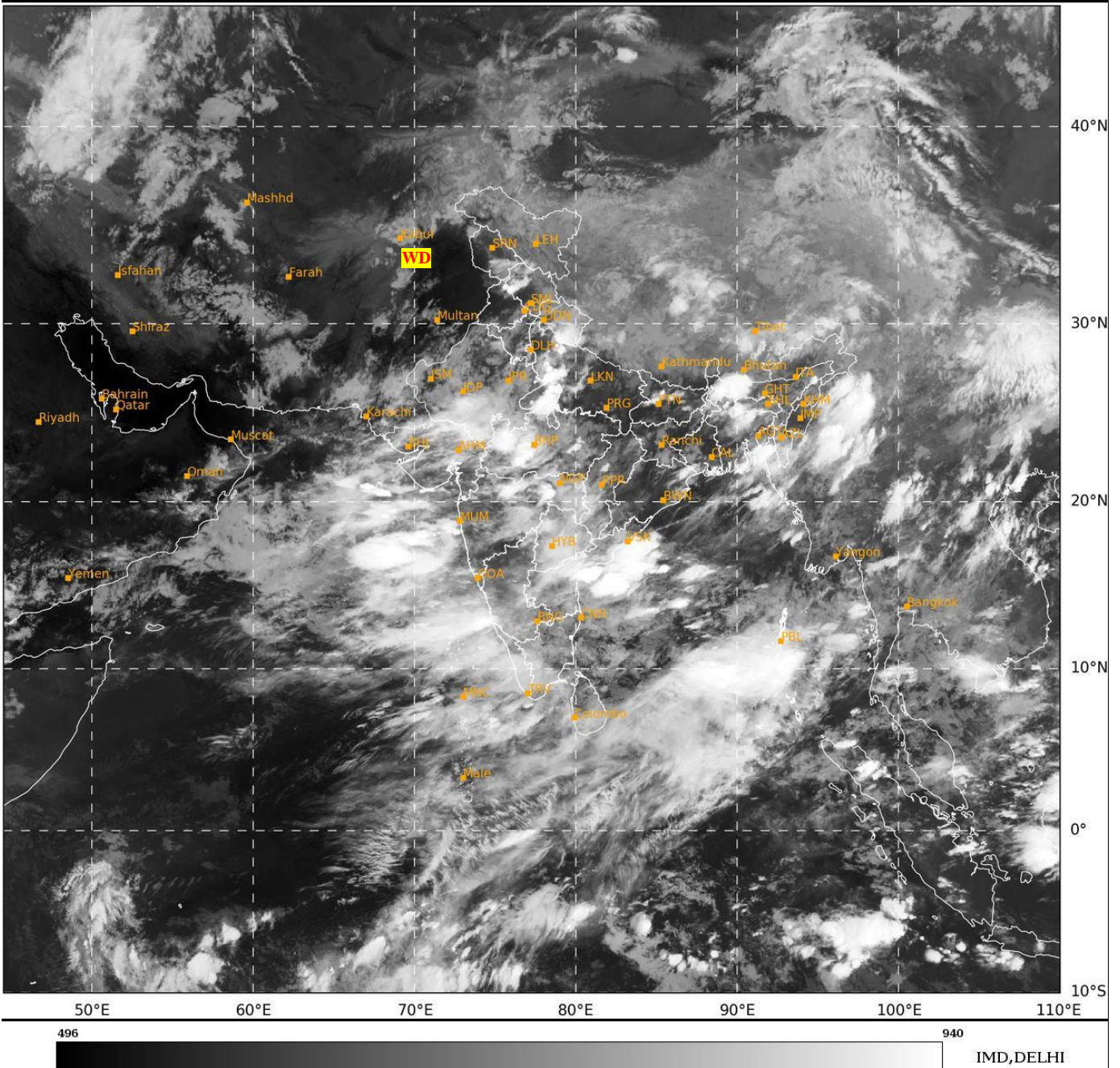




**SATELLITE BULLETIN BASED ON SATELLITE
IMAGERIES AND PRODUCTS**
26.06.2024 TIME 2100 UTC

SAT : INSAT-3DR IMG
IMG_TIR1 10.8 um
LIC Mercator

26-06-2024/(2115 to 2142) GMT
27-06-2024/(0245 to 0312) IST



TCIN50 DEMS 262100

SATELLITE BULLETIN BASED ON INSAT-3DR PIC OF 262115 UTC (.)

REGION COVERED BETWEEN LAT 50.0°N TO 35.0°S AND LONG 40.0°E TO 125.0°E (.)

SALIENT FEATURES:-

WESTERN DISTURBANCE (WD):-

SCT MULTILAYERED CLOUDS OVER E AFGAN ADJ PAK J&K LADAKH AND N/HOOD IN ASSW
WD OVER THE AREA (.)

CONVECTIVE / THUNDERSTORM ACTIVITY:-

INTENSE TO VERY INTENSE CONVECTIVE / THUNDERSTORM ACTIVITY OBSERVED OVER W
HP ADJ N PJB S UTRKND W UP NE ORS ADJ SW GWB N BHR SHWB ASSAM MEGHA N NAGA
MIZO TRP W MP VID S COTL KRNTK COTL AP LKSDP ILS AREA ANDAMAN ILS (MINIMUM **CTT**
MINUS 75-93 DEG CEL) (.)



INSAT-3DR 26-JUN-2024 21:15 WV IMG

WATER VAPOUR WIND

(1Kt = 0.5 m/s)

10 Kt /

15 Kt //

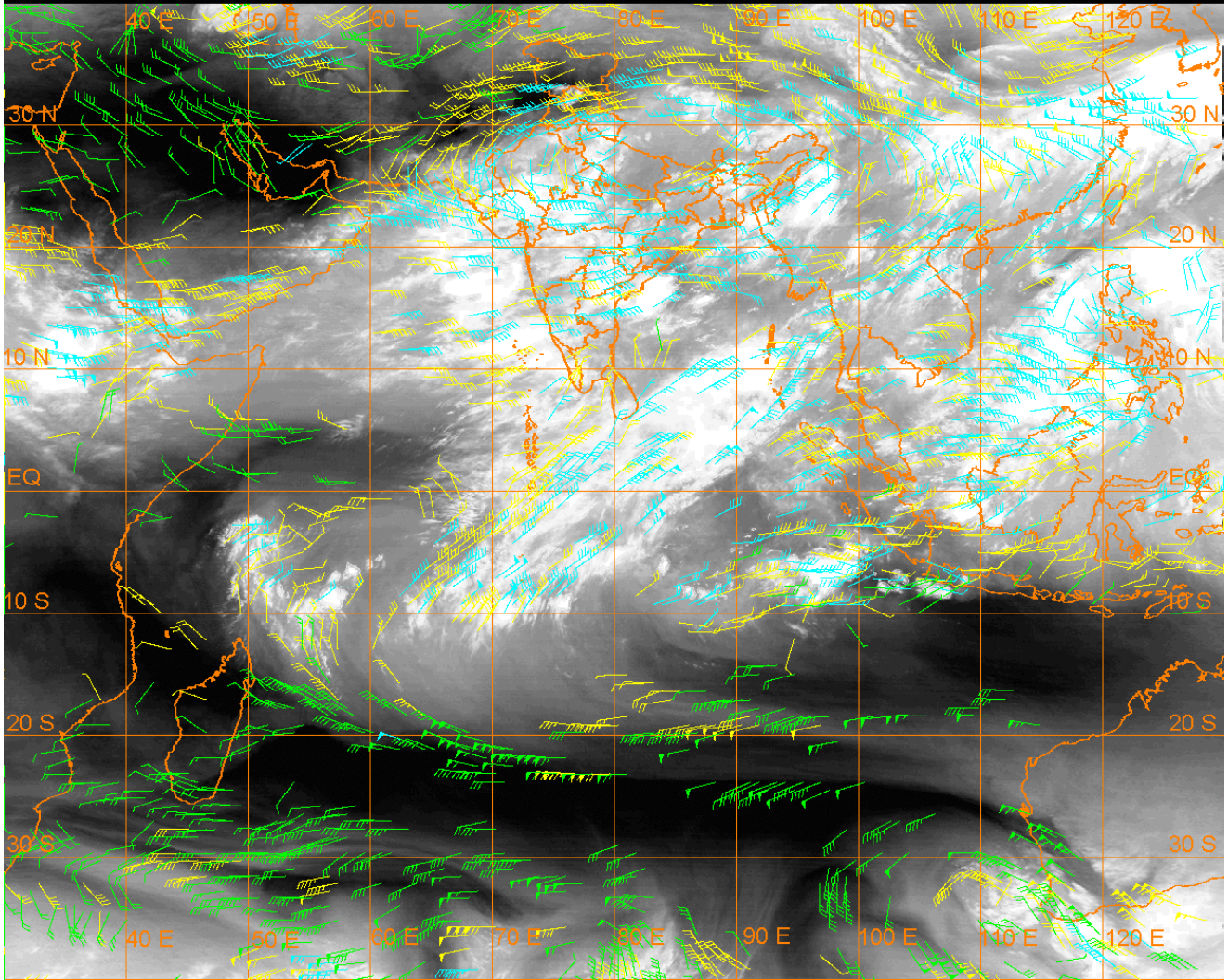
20 Kt //

50 Kt ▲

100-250 hPa

251-350 hPa

351-500 hPa



CLOUDS DESCRIPTION WITHIN INDIA:-

NORTH:-

SCT LOW/MED CLOUDS WITH EMBDD INT TO V INT CONVTN OVER W HP ADJ N PJB S UTRKND W UP (.) SCT LOW/MED CLOUDS WITH EMBDD MOD TO INT CONVTN OVER S J&K ADJ LADAKH N UTRKND AND WK TO MOD CONVTN OVER REST J&K REST LADAKH REST HP REST PJB HARY DLH E UP (.)

EAST:-

SCT LOW/MED CLOUDS WITH EMBDD INT TO V INT CONVTN OVER NE ORS ADJ SW GWB N BHR SHWB ASSAM MEGHA N NAGA MIZO TRP & BD (.) SCT LOW/MED CLOUDS WITH EMBDD MOD TO INT CONVTN OVER CHTGH SW ORS ARUPR (.) SCT LOW/MED CLOUDS WITH EMBDD WK TO MOD CONVTN OVER S BHR JHRKND REST ORS REST GWB SKM S NAGA MANI (.)

WEST:-

SCT LOW/MED CLOUDS WITH EMBDD INT TO V INT CONVTN OVER W MP VID (.) SCT LOW/MED CLOUDS WITH EMBDD MOD TO INT CONVTN OVER SE RAJ GUJ E MP REST MAHA AND WK TO MOD CONVTN OVER GOA (.)

SOUTH:-

SCT LOW/MED CLOUDS WITH EMBDD INT TO V INT CONVTN OVER S COTL KRNTK COTL AP LKSDP ILS AREA ANDAMAN & NICOBAR ILS AREA (.) SCT LOW/MED CLOUDS WITH EMBDD MOD TO INT CONVTN OVER REST KRNTK TLNGN RYLSM KER TN (.)

ARABIAN SEA:-

SCT LOW/MED CLOUDS WITH EMBDD INT TO V INT CONVTN OVER EAST ARSEA LKSDP ILS AREA MALDIVES AREA & COMORIN AREA (MINIMUM CTT MINUS 75-93 DEG CEL) (.) SCT LOW/MED CLOUDS WITH EMBDD MOD TO INT CONVTN OVER GULF OF KUTCH GULF OF CAMBAY AND WK TO MOD CONVTN OVER WEST ARSEA (.)

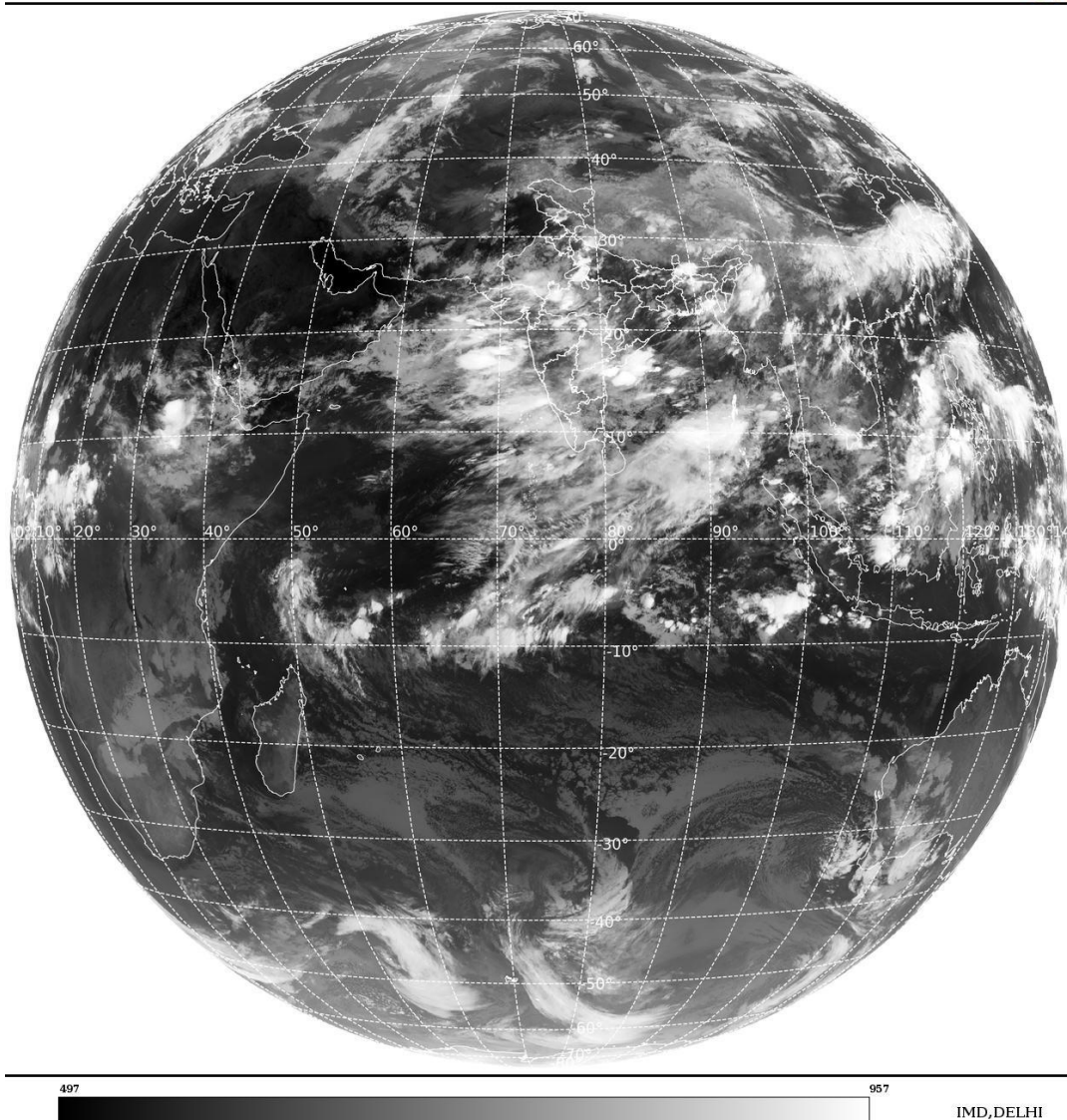
BAY OF BENGAL & ANDAMAN SEA:-

SCT LOW/MED CLOUDS WITH EMBDD INT TO V INT CONVTN OVER BAY & ANDAMAN SEA (MINIMUM **CTT MINUS 80-93 DEG CEL**) (.) SCT LOW/MED CLOUDS WITH EMBDD MOD TO INT CONVTN OVER ARAKAN COAST GULF OF MARTABAN & TENASSERIM COAST (.)

CLOUDS DESCRIPTION OUTSIDE INDIA:-

SAT : INSAT-3DR IMG
Thermal Infrared1 Count 10.8 um
L1B FULL DISK

26-06-2024/(2115 to 2142) GMT
27-06-2024/(0245 to 0312) IST



SCT LOW/MED CLOUDS WITH EMBDD MOD TO INT CONVTN OVER SRI LANKA PALK STR GULF OF MANNAR MALDIVES PAK NEPAL BHUTAN TIBET CHINA YELLOW SEA EAST CHINA SEA MYANMAR THAILAND GULF OF THAILAND CAMBODIA LAOS VIETNAM GULF OF TONKIN SUMATRA STR OF MALACCA MALAYSIA BORNEO SOUTH CHINA SEA JAVA SEA CELEBES ILS & SEA PHILIPPINES SULU SEA AND OVER INDIAN OCEAN BET LAT 5.0N TO 15.0S LONG 48.0E TO 108.0E (.)

TOO 27/0430 HRS IST=

NNNN

LEGEND:-

REGION	NORTH	J&K HP PJB HARY DLH UP UTRKND
	EAST	BHR JHRKND CHTGH OR WB SKM NORTH- EAST STATES
	WEST	RAJ MP GUJ MAHA GOA
	SOUTH	TLNGN AP KRNTK KER TN LKSDP ANDAMAN & NICOBAR ILS

CLOUD DISTRIBUTION	ISOL	ISOLATED (LESS THAN 25%)
	SCT	SCATTERED (25 TO 50%)
	BKN	BROKEN (51 TO 75%)
	SLD	SOLID (GREATER THAN 75%)
CLOUDS TOP TEMPERATURE	CTT	CLOUD TOP TEMPERATURE
CONVECTION	WK CONV TN	WEAK CONVECTION (CTT GREATER THAN -25°C)
	MOD CONV TN	MODERATE CONVECTION (CTT BETWEEN -25°C TO -40°C)
	INT CONV TN	INTENSE CONVECTION (CTT BETWEEN -41°C TO -70°C)
	V INT CONV TN	VERY INTENSE CONVECTION (CTT LESS THAN -70°C)
METEOROLOGICAL SUB- DIVISIONS, STATES & UNION TERRITORIES	ARUPR	ARUNACHAL PRADESH
	BHR	BIHAR
	CHTGH	CHHATTISGARH
	COTL AP	COASTAL ANDHRA PRADESH
	COTL KRNTK	COASTAL KARNATAKA
	COTL ORS	COASTAL ORISSA
	GUJ	GUJARAT
	GWB	GANGETIC WEST BENGAL
	HARY	HARYANA
	DLH	DELHI
	HP	HIMACHAL PRADESH
	J&K	JAMMU AND KASHMIR
	JHRKND	JHARKHAND
	KER	KERALA
	KKN	KONKAN
	LKSDP	LAKSHADWEEP
	M MAHA	MADHYA MAHARASHTRA
	MAHA	MAHARASHTRA
	MANI	MANIPUR
	MEGHA	MEGHALAYA
	MIZO	MIZORAM
	MP	MADHYA PRADESH
	MRTHWD	MARATHWADA
	NAGA	NAGALAND
N COTL AP	NORTH COASTAL ANDHRA PRADESH	
NIK	NORTH INTERIOR KARNATAKA	
ORS	ORISSA	
PJB	PUNJAB	
RAJ	RAJASTHAN	
RYLSM	RAYALASEEMA	
SAU & KUTCH	SAURASHTRA & KUTCH	
SHWB	SUB-HIMALAYAN WEST BENGAL	
SIK	SOUTH INTERIOR KARNATAKA	
SKM	SIKKIM	

	TLNGN	TELANGANA
	TN	TAMIL NADU
	TRP	TRIPURA
	UP	UTTAR PRADESH
	UTRKND	UTTARAKHAND
	VID	VIDHARBHA
	SHWB	SUB HIMALAYAN WEST BENGAL
	GWB	GANGETIC WEST BENGAL
	ARSEA	ARABIAN SEA
	ILS	ISLANDS
MISCELLANEOUS	ASSW	IN ASSOCIATION WITH
	ASSTD	ASSOCIATED
	LLC	LOW LEVEL CIRCULATION
	EMBDD	EMBEDDED
	N/HOOD	NEIGHBOURHOOD
	EXT	EXTREME