



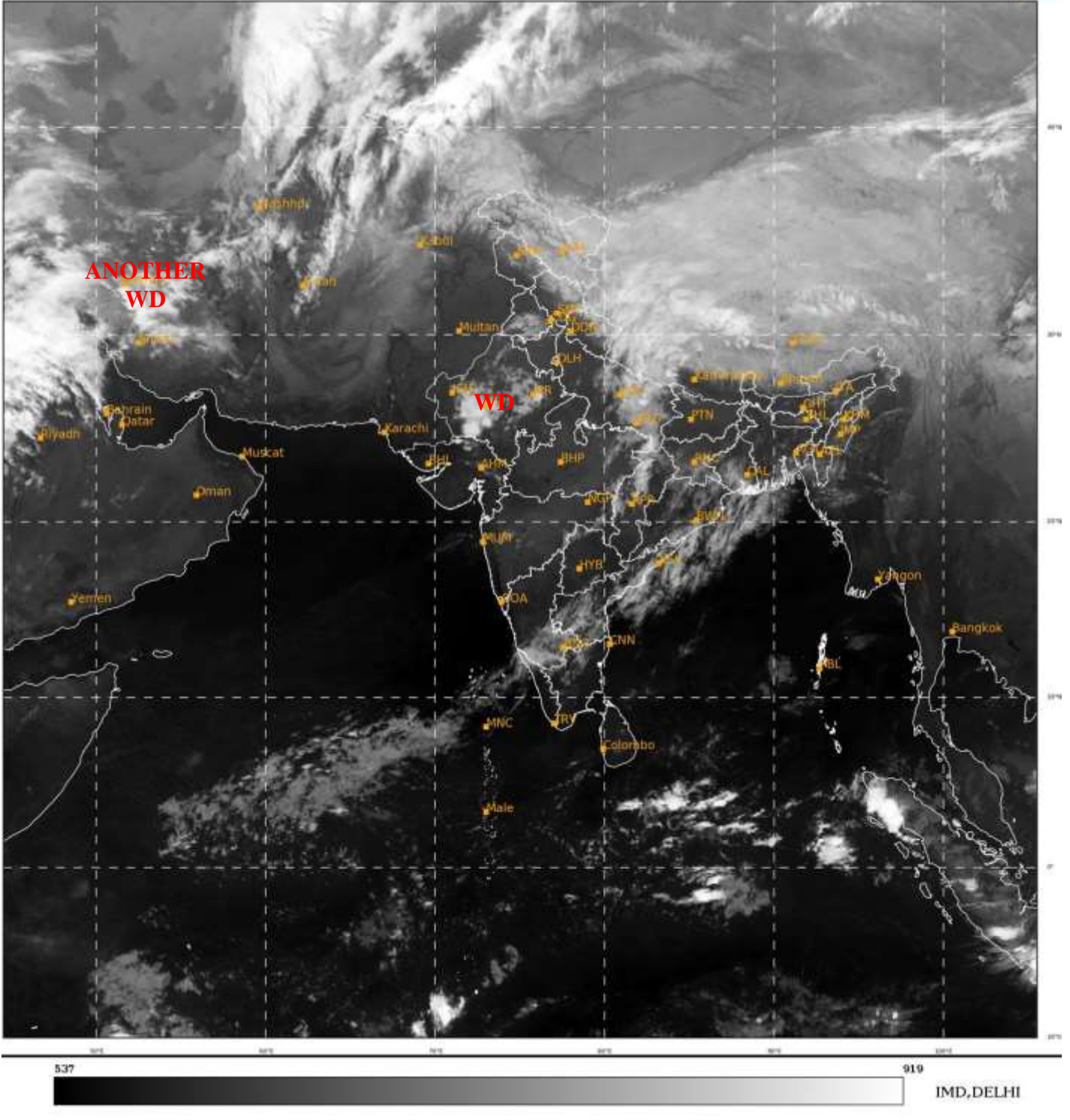
भारत मौसम विज्ञान विभाग  
पृथ्वी विज्ञान मंत्रालय  
India Meteorological Department  
Ministry of Earth Sciences



**SATELLITE BULLETIN BASED ON SATELLITE  
IMAGERIES AND PRODUCTS**  
**07.03.2023 TIME 2100 UTC**

SAT : INSAT-3D IMG  
IMG\_TIR1 10.8 um  
LIC Mercator

07-03-2023/(2100 to 2126) GMT  
08-03-2023/(0230 to 0256) IST



TCIN50 DEMS 072100

SATELLITE BULLETIN BASED ON INSAT-3D PIC OF 072100 UTC (.)

REGION COVERED BETWEEN LAT 50.0°N TO 35.0°S AND LONG 40.0°E TO 125.0°E (.)

**SALIENT FEATURES:-**

**WESTERN DISTURBANCE (WD):-**

SCT MULTILAYERED CLOUDS OVER E GUJ RAJ MAHA E MP UP UTRKND S PJB HP LADAKH W NEPAL TIBET ADJ CHINA IN ASSW **WD** OVER THE AREA (.)

SCT MULTILAYERED CLOUDS OVER N SAUDI ARABIA IRAN AND N/HOOD IN ASSW **ANOTHER WD** OVER THE AREA (.)





INSAT-3D 07-MAR-2023 22:00 WV IMG

WATER VAPOUR WIND

(1Kt = 0.5 m/s)

10 Kt

15 Kt

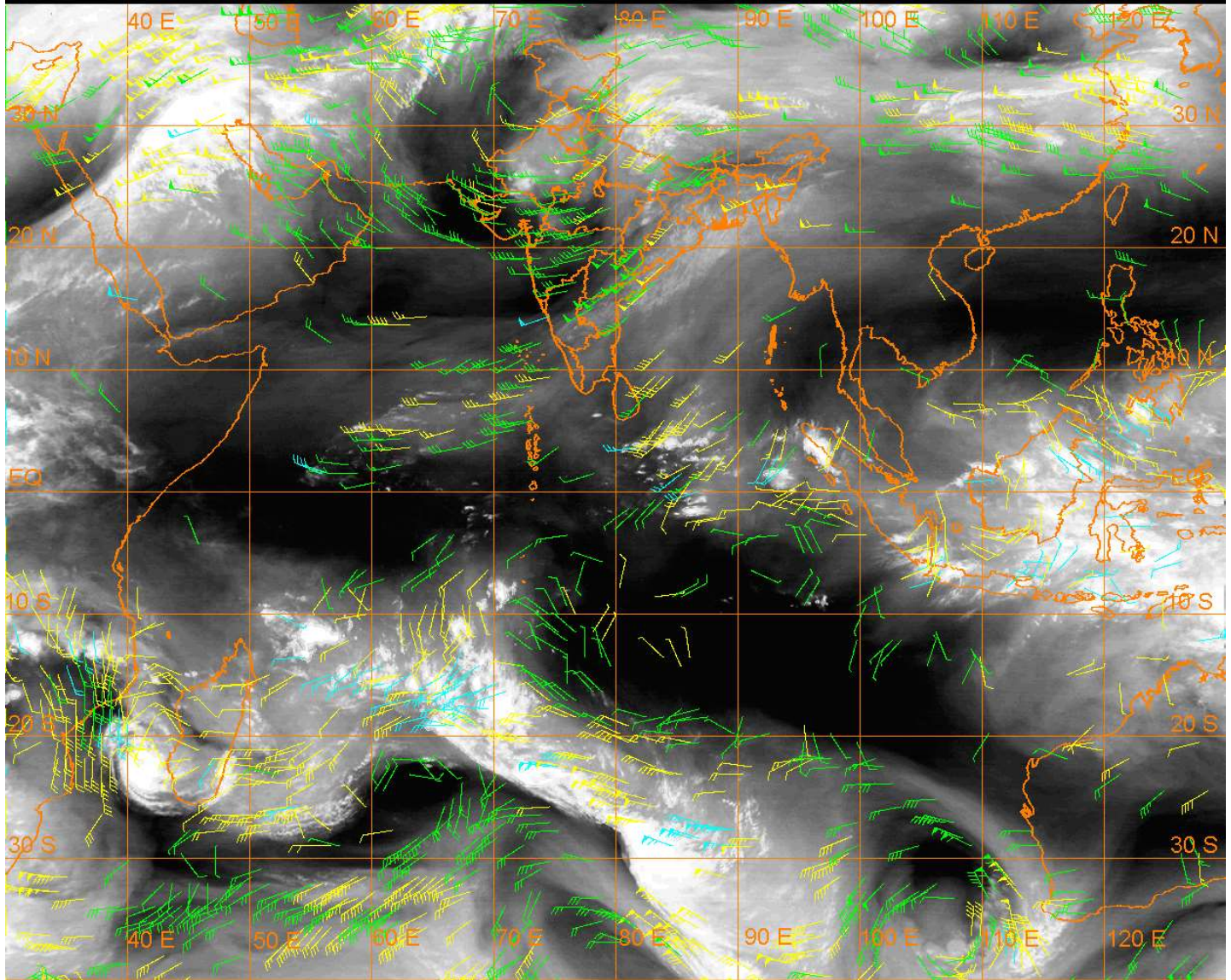
20 Kt

50 Kt

100-250 hPa

251-350 hPa

351-500 hPa



**CLOUDS DESCRIPTION WITHIN INDIA:-**

**NORTH:-**

SCT LOW/MED CLOUDS WITH EMBDD WK TO MOD CONVTN OVER E LADAKH N HP S PJB E UP N UTRKND (.) SCT LOW/MED CLOUDS OVER W LADAKH J&K S HP S UTRKND HARY DLH (.)

**EAST:-**

SCT LOW/MED CLOUDS WITH EMBDD ISOL WK TO MOD CONVTN OVER N CHTGH ORS S JHRKND GWB SKM ARUPR & BD (.) ISOL TO SCT LOW/MED CLOUDS OVER NW BHR S CHTGH N JHRKND BHR REST NE STATES (.)

**WEST:-**

SCT LOW/MED CLOUDS WITH EMBDD MOD TO INT CONVTN OVER SW RAJ AND ISOL WK TO MOD CONVTN OVER REST RAJ NE GUJ E MP (.) SCT LOW/MED CLOUDS OVER REST GUJ MAHA (.)

**SOUTH:-**

SCT LOW/MED CLOUDS WITH EMBDD WK TO MOD CONVTN OVER RYLSM COTL AP SIK N KER N TN LKSDP ILS (.) SCT LOW/MED CLOUDS OVER TLNGN S COTL KRNTK S KER S TN ANDAMAN & NICOBAR ILS (.)

**ARABIAN SEA:-**

SCT LOW/MED CLOUDS WITH EMBDD ISOL WK TO MOD CONVTN OVER SE ARSEA (.)

**BAY OF BENGAL & ANDAMAN SEA:-**

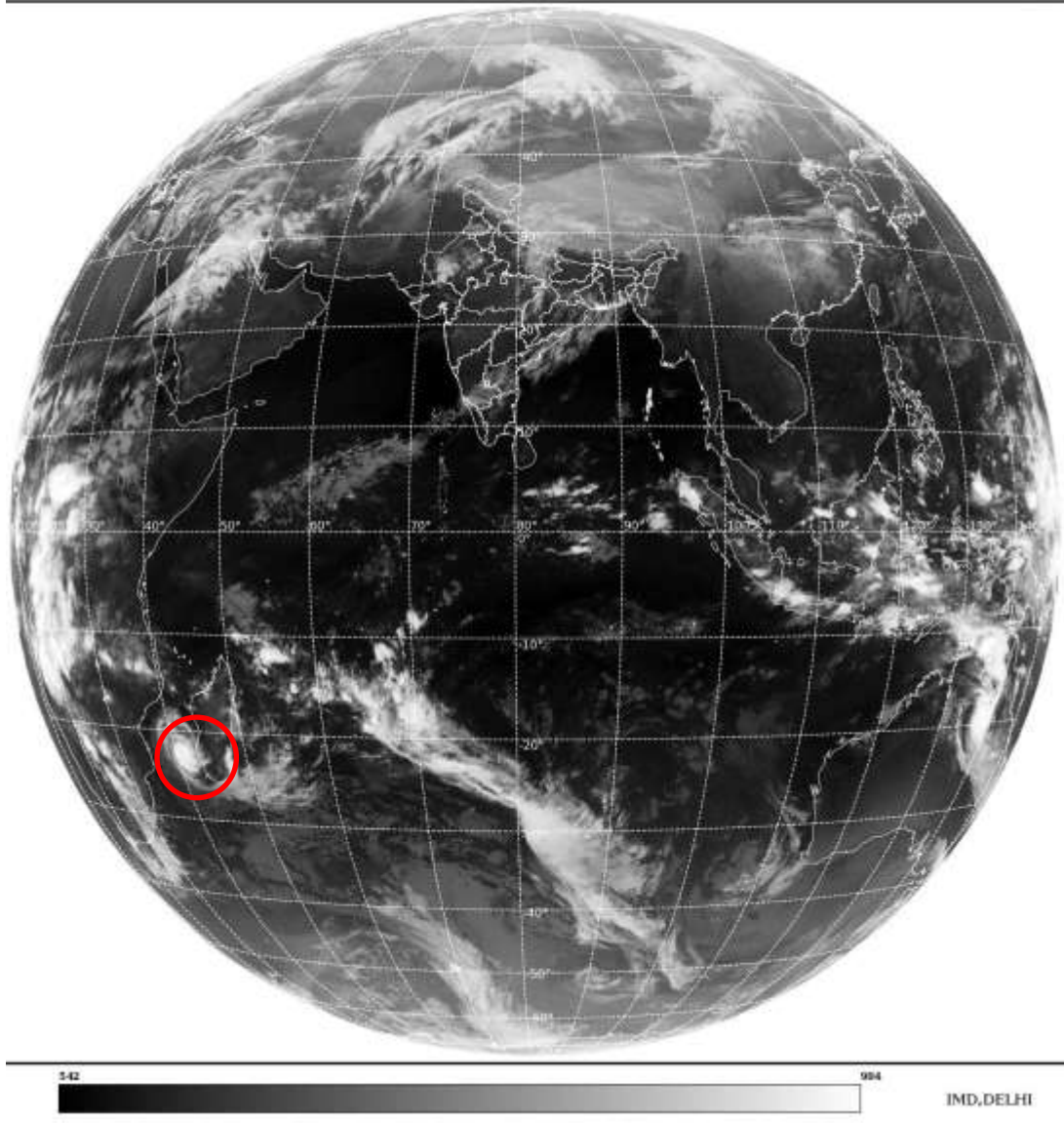
SCT LOW/MED CLOUDS WITH EMBDD ISOL WK TO MOD CONVTN OVER WEST BAY (.)



**CLOUDS DESCRIPTION OUTSIDE INDIA:-**

SAT : INSAT-3D IMG  
Thermal InfraredI Count 10.8 um  
L1B FULL DISK

07-03-2023/(2100 to 2126) GMT  
08-03-2023/(0230 to 0256) IST



**VORTEX (FREDDY) OVER SOUTH MOZAMBIQUE CHANNEL:-**

VORTEX (**FREDDY**) OVER SOUTH MOZAMBIQUE CHANNEL (**AREA D75**) CENTERED NEAR **22.4S / 41.0E** (.) INTENSITY **T5.55/5.5** (.) CORRESPONDING MAXIMUM SUSTAINED WINDS OF **90-119 KTS** (.) ASSTD BKN LOW/MED CLOUDS WITH EMBDD INT TO V INT CONVTN OVER SOUTH MOZAMBIQUE CHANNEL & N/HOOD (.)

SCT LOW/MED CLOUDS WITH EMBDD MOD TO INT CONVTN OVER NEPAL TIBET CHINA SUMATRA MALAYSIA BORNEO ADJ SOUTH CHINA SEA JAVA ILS & SEA CELEBES ILS & SEA S PHILIPPINES MADAGASCAR MOZAMBIQUE CHANNEL AND OVER INDIAN OCEAN BET LAT 5.0N TO 2.0S LONG 80.0E TO 100.0E AND BET LAT 10.0S TO 30.0S LONG 40.0E TO 90.0E (.)

TOO 08/0440 HRS IST=

NNNN

**LEGEND:-**

|        |       |  |
|--------|-------|--|
| REGION | NORTH | J&K HP PJB HARY DLH UP UTRKND                    |
|        | EAST  | BHR JHRKND CHTGH OR WB SKM<br>NORTH- EAST STATES |
|        | WEST  | RAJ MP GUJ MAHA GOA                              |

|   |                     |  |                   |
|---|---------------------|--|-------------------|
|   | <b>SOUTH</b>        | <b>TLNGN AP KRNTK KER TN LKSDP<br/>ANDAMAN &amp; NICOBAR ILS</b> |                   |
| <b>CLOUD DISTRIBUTION</b>   | <b>ISOL</b>         | <b>ISOLATED (LESS THAN 25%)</b>                                  |                   |
|   | <b>SCT</b>          | <b>SCATTERED (25 TO 50%)</b>                                     |                   |
|   | <b>BKN</b>          | <b>BROKEN (51 TO 75%)</b>  |                   |
|   | <b>SLD</b>          | <b>SOLID (GREATER THAN 75%)</b>                                  |                   |
| <b>CLOUDS TOP TEMPERATURE</b>   | <b>CTT</b>          | <b>CLOUD TOP TEMPERATURE</b>                                     |                   |
| <b>CONVECTION</b>   | <b>WK CONVTN</b>    | <b>WEAK CONVECTION<br/>(CTT GREATER THAN -25°C)</b>              |                   |
|   | <b>MOD CONVTN</b>   | <b>MODERATE CONVECTION<br/>(CTT BETWEEN -25°C TO -40°C)</b>      |                   |
|   | <b>INT CONVTN</b>   | <b>INTENSE CONVECTION<br/>(CTT BETWEEN -41°C TO -70°C)</b>       |                   |
|   | <b>V INT CONVTN</b> | <b>VERY INTENSE CONVECTION<br/>(CTT LESS THAN -70°C)</b>         |                   |
| <b>METEOROLOGICAL<br/>SUB- DIVISIONS,<br/>STATES &amp; UNION<br/>TERITORIES</b> | <b>ARUPR</b>        | <b>ARUNACHAL PRADESH</b>   |                   |
|   | <b>BHR</b>          | <b>BIHAR</b>   |                   |
|   | <b>CHTGH</b>        | <b>CHHATTISGARH</b>  |                   |
|   | <b>COTL AP</b>      | <b>COASTAL ANDHRA PRADESH</b>                                    |                   |
|   | <b>COTL KRNTK</b>   | <b>COASTAL KARNATAKA</b>   |                   |
|   | <b>COTL ORS</b>     | <b>COASTAL ORISSA</b>  |                   |
|   | <b>GUJ</b>          | <b>GUJARAT</b>   |                   |
|   | <b>GWB</b>          | <b>GANGETIC WEST BENGAL</b>                                      |                   |
|   | <b>HARY</b>         | <b>HARYANA</b>   |                   |
|   | <b>DLH</b>          | <b>DELHI</b>   |                   |
|   | <b>HP</b>           | <b>HIMACHAL PRADESH</b>  |                   |
|   | <b>J&amp;K</b>      | <b>JAMMU AND KASHMIR</b>   |                   |
|   | <b>JHRKND</b>       | <b>JHARKHAND</b>   |                   |
|   | <b>KER</b>          | <b>KERALA</b>  |                   |
|   | <b>KKN</b>          | <b>KONKAN</b>  |                   |
|   | <b>LKSDP</b>        | <b>LAKSHADWEEP</b>   |                   |
|   | <b>M MAHA</b>       | <b>MADHYA MAHARASHTRA</b>  |                   |
|   | <b>MAHA</b>         | <b>MAHARASHTRA</b>   |                   |
|   | <b>MANI</b>         | <b>MANIPUR</b>   |                   |
|   | <b>MEGHA</b>        | <b>MEGHALAYA</b>   |                   |
|   | <b>MIZO</b>         | <b>MIZORAM</b>   |                   |
|   | <b>MP</b>           | <b>MADHYA PRADESH</b>  |                   |
|   |                     | <b>MRTHWD</b>  | <b>MARATHWADA</b> |
|   |                     | <b>NAGA</b>  | <b>NAGALAND</b>   |
| <b>N COTL AP</b>  |                     | <b>NORTH COASTAL ANDHRA<br/>PRADESH</b>                          |                   |
| <b>NIK</b>  |                     | <b>NORTH INTERIOR KARNATAKA</b>                                  |                   |
| <b>ORS</b>  |                     | <b>ORISSA</b>  |                   |
| <b>PJB</b>  |                     | <b>PUNJAB</b>  |                   |
| <b>RAJ</b>  |                     | <b>RAJASTHAN</b>   |                   |
| <b>RYLSM</b>  |                     | <b>RAYALASEEMA</b>   |                   |
| <b>SAU &amp; KUTCH</b>  |                     | <b>SAURASHTRA &amp; KUTCH</b>                                    |                   |

|                      |               |                                  |
|----------------------|---------------|----------------------------------|
|                      | <b>SHWB</b>   | <b>SUB-HIMALAYAN WEST BENGAL</b> |
|                      | <b>SIK</b>    | <b>SOUTH INTERIOR KARNATAKA</b>  |
|                      | <b>SKM</b>    | <b>SIKKIM</b>                    |
|                      | <b>TLNGN</b>  | <b>TELANGANA</b>                 |
|                      | <b>TN</b>     | <b>TAMIL NADU</b>                |
|                      | <b>TRP</b>    | <b>TRIPURA</b>                   |
|                      | <b>UP</b>     | <b>UTTAR PRADESH</b>             |
|                      | <b>UTRKND</b> | <b>UTTARAKHAND</b>               |
|                      | <b>VID</b>    | <b>VIDHARBHA</b>                 |
|                      | <b>SHWB</b>   | <b>SUB HIMALAYAN WEST BENGAL</b> |
|                      | <b>GWB</b>    | <b>GANGETIC WEST BENGAL</b>      |
|                      | <b>ARSEA</b>  | <b>ARABIAN SEA</b>               |
|                      | <b>ILS</b>    | <b>ISLANDS</b>                   |
| <b>MISCELLANEOUS</b> | <b>ASSW</b>   | <b>IN ASSOCIATION WITH</b>       |
|                      | <b>ASSTD</b>  | <b>ASSOCIATED</b>                |
|                      | <b>LLC</b>    | <b>LOW LEVEL CIRCULATION</b>     |
|                      | <b>EMBDD</b>  | <b>EMBEDDED</b>                  |
|                      | <b>N/HOOD</b> | <b>NEIGHBOURHOOD</b>             |
|                      | <b>EXT</b>    | <b>EXTREME</b>                   |