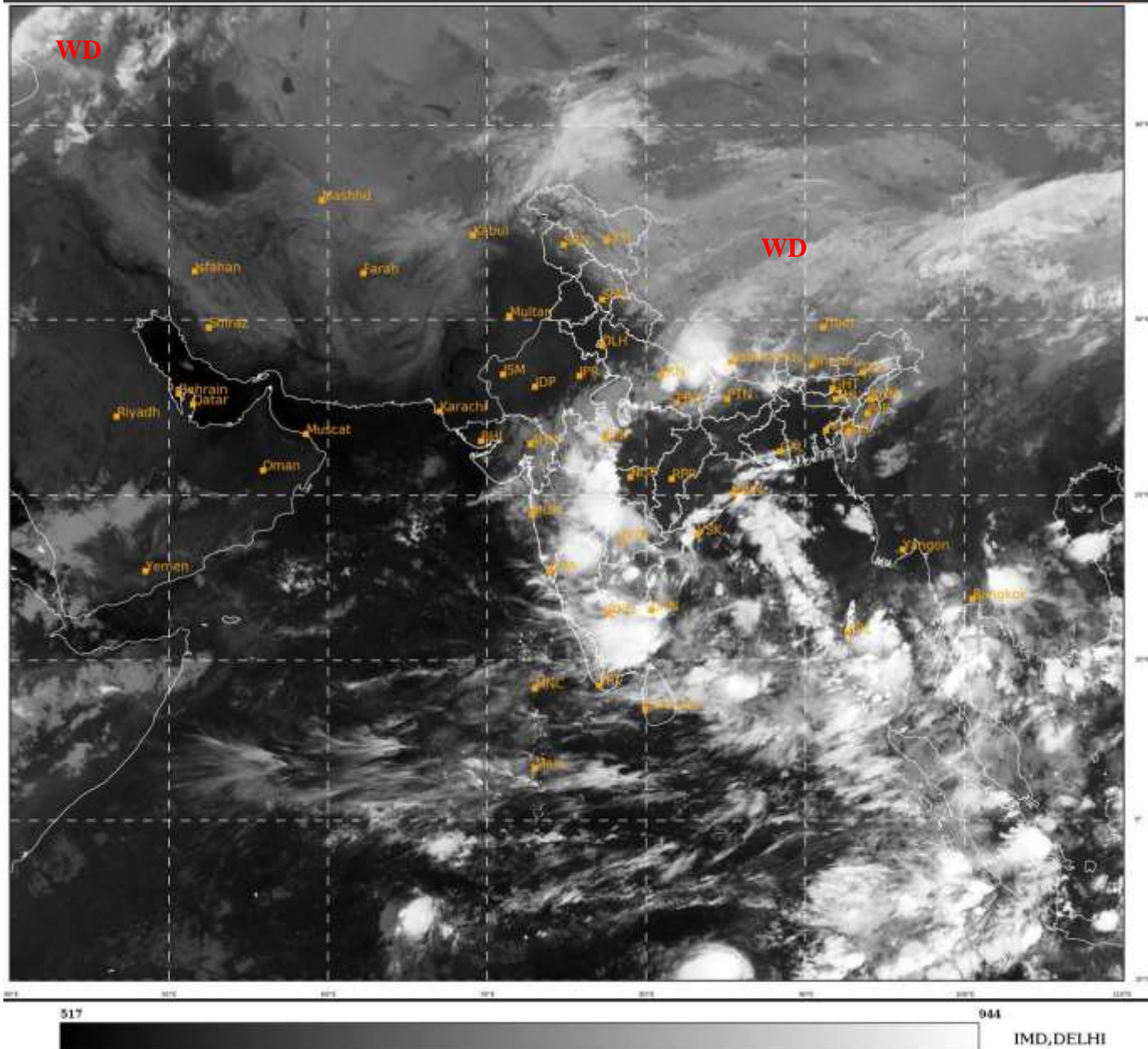




**SATELLITE BULLETIN BASED ON SATELLITE
IMAGERIES AND PRODUCTS**
06.10.2022 TIME 0000 UTC

SAT : INSAT-3D IMG
IMG TIR1 10.8 um
LIC Mercator

06-10-2022/(0000 to 0026) GMT
06-10-2022/(0530 to 0556) IST



TCIN50 DEMS 060000

SATELLITE BULLETIN BASED ON INSAT-3DR PIC OF 060000 UTC (.)

REGION COVERED BETWEEN LAT 50.0°N TO 35.0°S AND LONG 40.0°E TO 125.0°E (.)

SALIENT FEATURES:-

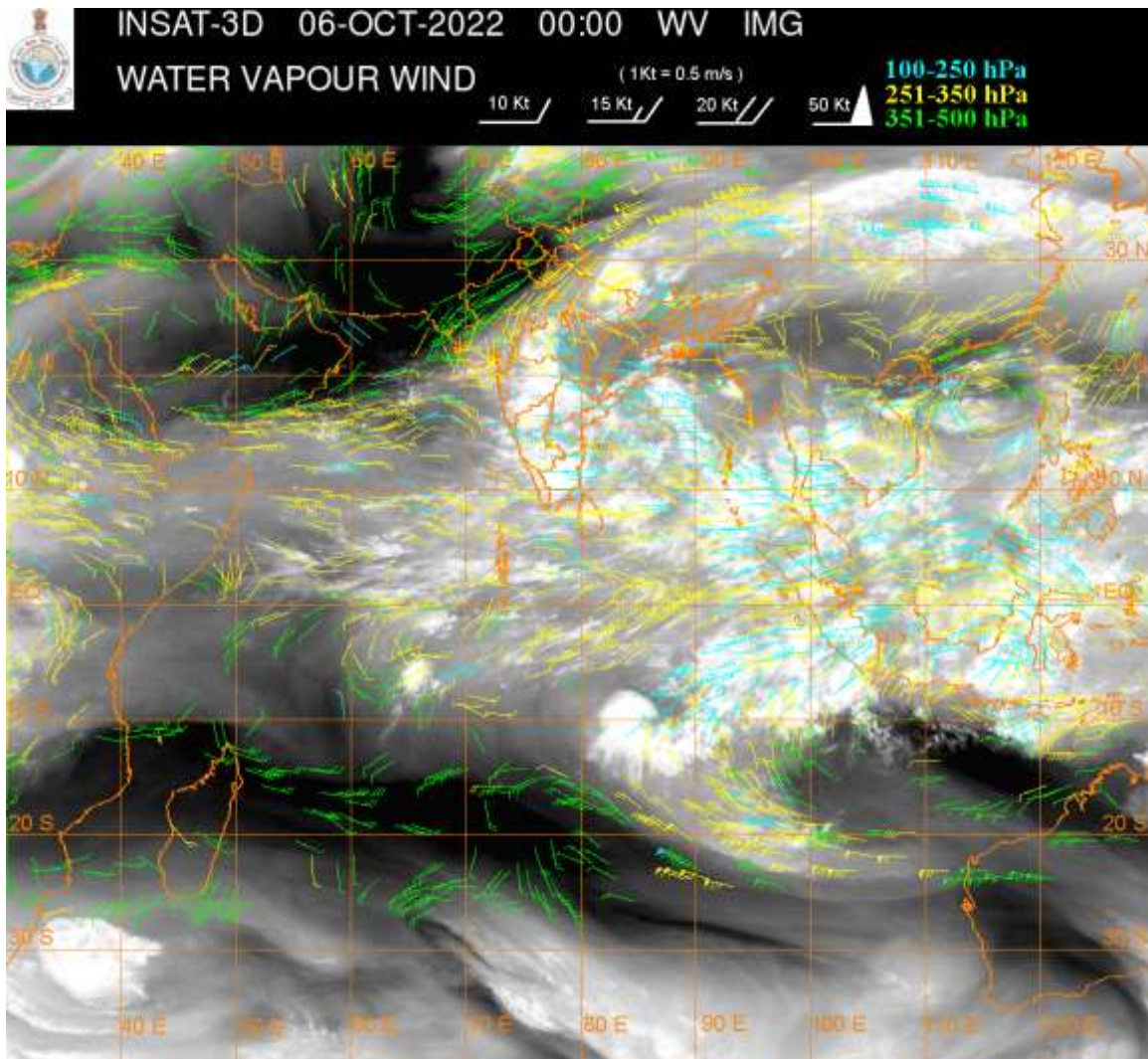
INTENSE CONVECTIVE CLOUDS:-

INTENSE CONVECTIVE CLOUDS OBSERVED OVER INTENSE TO VERY INTENSE CONVECTION OVER SW BAY S COTL AP TN W RYLSM NW TLNGN NIK W VID MRTHWD W MP NE UP (.)

WESTERN DISTURBANCE (WD):-

SCT MULTILAYERED CLOUDS OVER TIBET AND N/HOOD IN ASSW **WD** OVER THE AREA (.)

SCT MULTILAYERED CLOUDS OVER EAST BLACK SEA AND N/HOOD IN ASSW AOTHER **WD** OVER THE AREA (.)



CLOUDS DESCRIPTION WITHIN INDIA:-

NORTH:-

SCT TO BKN LOW/MED CLOUDS WITH EMBDD INT TO V INT CONVTN OVER NE UP (.) SCT LOW/MED CLOUDS WITH EMBDD WK CONVTN OVER LADAKH N HP N UTRKND REST UP (.) SCT LOW/MED CLOUDS OVER J&K S HP S UTRKND SE HARY (.)

EAST:-

SCT TO BKN LOW/MED CLOUDS WITH EMBDD INT TO V INT CONVTN OVER EXT NW BHR COTL OS S GWB (.) SCT LOW/MED CLOUDS WITH EMBDD MOD TO INT CONVTN OVER NW BHR EXT S CHTGH SHWB EXT E ASSAM AND ISOL WK TO MOD CONVTN OVER REST PARTS OF THE REGION EXCEPT C GWB (.)

WEST:-

SCT TO BKN LOW/MED CLOUDS WITH EMBDD INT TO V INT CONVTN OVER W MP E PARTS OF NORTH MADHYA MAHA W VIV MRTHWD S KKN (.) BKN LOW/MED CLOUDS WITH EMBDD ISOL MOD TO INT CONVTN OVER NREST NORTH MADHYA MAHA N KKN (.) SCT TO BKN LOW/MED CLOUDS WITH EMBDD WK TO MOD CONVTN OVER E RAJ NE MP GUJ C KKN GOA (.) SCT LOW/MED CLOUDS OVER REST MP E VID (.)

SOUTH:-

SCT TO BKN LOW/MED CLOUDS WITH EMBDD INT TO V INT CONVTN OVER NIK SIK NW TLNGN W RYLSM N COTL AP TN ANDAMAN & NICOBAR ILS (.) SCT LOW/MED CLOUDS WITH EMBDD MOD TO INT CONVTN OVER REST TLNGN REST RYLSM KER (.) BKN LOW/MED CLOUDS WITH EMBDD WK TO MOD CONVTN OVER REST PART OF THE REGION (.)

ARABIAN SEA:-

SCT LOW/MED CLOUDS WTH EMBDD ISOL MOD TO INT CONVTN OVER CENTRAL ARSEA & SOUTH ARSEA LKSDP ILS AREA (.) SCT LOW/MED CLOUDS WITH EMBDD WK TO MOD CONVTN OVER NE ARSEA AND COMORIN AREA (.)

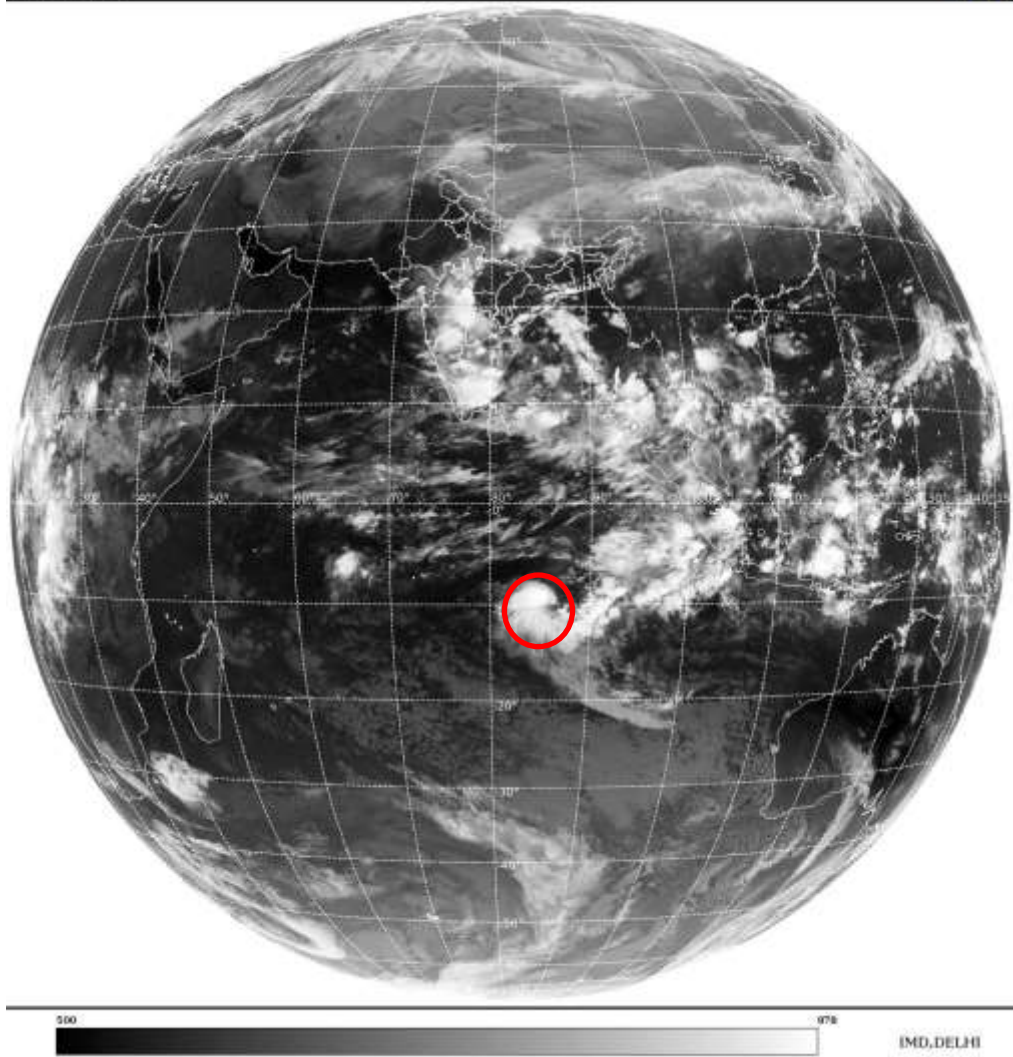
BAY OF BENGAL & ANDAMAN SEA:-

SCT TO BKN LOW/MED CLOUDS WITH EMBDD INT TO V INT CONVTN OVER NW BAY CENTRAL BAY SOUTH BAY AND ANDAMAN SEA (.) SCT LOW/MED CLOUDS WITH EMBDD MOD TO INT CONVTN OVER NE BAY (.)

CLOUDS DESCRIPTION OUTSIDE INDIA:-

SAT : INSAT-3D IMG
Thermal Infrared1 Count 10.8 um
LIB FULL DISK

06-10-2022/(0000 to 0026) GMT
06-10-2022/(0530 to 0556) IST



VORTEX (NW OF COCOS ISLANDS) OVER INDIAN OCEAN & N/HOOD:-

VORTEX (NW OF COCOS ISLANDS) OVER INDIAN OCEAN & N/HOOD CENTRED NEAR 9.6S / 86.2 E (.) (AREA E 70) (.) INTENSITY T 1.5/1.5 (.) ASSTD WIND 17-27 KTS (.) ASSTD BKN LOW/MED CLOUDS WITH EMBDD INT TO V INT CONVTN OVER AREA BET LAT 13.0S TO 7.5S LONG 82.0E TO 87.0E (.)

SCT LOW/MED CLOUDS WITH EMBDD MOD TO INT CONVTN OVER SRI LANKA PALK STR GULF OF MANNAR MALDIVES NEPAL TIBET CHINA YELLOW SEA E CHINA SEA MYANMAR THAILAND GULF OF THAILAND CAMBODIA LAOS VIETNAM SUMATRA STR OF MALACCA MALAYSIA BORNEO GULF OF TONKIN SOUTH CHINA SEA JAVA ILS & SEA CELEBES ILS & SEA PHILIPPINES SULU SEA AND OVER INDIAN OCEAN BET LAT 5.0N TO 8.0S EAST OF LONG 55.0E (.) BKN LOW/MED CLOUDS WITH EMBDD INT TO V INT CONVTN OVER AREA BET LAT 8.0S TO 1150S LONG 89.0E TO 105.0E (.)

TOO 06/0705 HRS IST=

NNNN

LEGEND:-

REGION	NORTH	J&K HP PJB HARY DLH UP UTRKND
	EAST	BHR JHRKND CHTGH OR WB SKM NORTH- EAST STATES
	WEST	RAJ MP GUJ MAHA GOA
	SOUTH	TLNGN AP KRNTK KER TN LKSDP ANDAMAN & NICOBAR ILS

CLOUD DISTRIBUTION	ISOL	ISOLATED (LESS THAN 25%)
	SCT	SCATTERED (25 TO 50%)
	BKN	BROKEN (51 TO 75%)
	SLD	SOLID (GREATER THAN 75%)
CLOUDS TOP TEMPERATURE	CTT	CLOUD TOP TEMPERATURE
CONVECTION	WK CONVTN	WEAK CONVECTION (CTT GREATER THAN -25°C)
	MOD CONVTN	MODERATE CONVECTION (CTT BETWEEN -25°C TO -40°C)
	INT CONVTN	INTENSE CONVECTION (CTT BETWEEN -41°C TO -70°C)
	V INT CONVTN	VERY INTENSE CONVECTION (CTT LESS THAN -70°C)
METEOROLOGICAL SUB-DIVISIONS, STATES & UNION TERRITORIES	ARUPR	ARUNACHAL PRADESH
	BHR	BIHAR
	CHTGH	CHHATTISGARH
	COTL AP	COASTAL ANDHRA PRADESH
	COTL KRNTK	COASTAL KARNATAKA
	COTL ORS	COASTAL ORISSA
	GUJ	GUJARAT
	GWB	GANGETIC WEST BENGAL
	HARY	HARYANA
	DLH	DELHI
	HP	HIMACHAL PRADESH
	J&K	JAMMU AND KASHMIR
	JHRKND	JHARKHAND
	KER	KERALA
	KKN	KONKAN
	LKSDP	LAKSHADWEEP
	M MAHA	MADHYA MAHARASHTRA
	MAHA	MAHARASHTRA
	MANI	MANIPUR
	MEGHA	MEGHALAYA
	MIZO	MIZORAM
	MP	MADHYA PRADESH
	MRTHWD	MARATHWADA
	NAGA	NAGALAND
	N COTL AP	NORTH COASTAL ANDHRA PRADESH
	NIK	NORTH INTERIOR KARNATAKA
	ORS	ORISSA
	PJB	PUNJAB
	RAJ	RAJASTHAN
	RYLSM	RAYALASEEMA
	SAU & KUTCH	SAURASHTRA & KUTCH
	SHWB	SUB-HIMALAYAN WEST BENGAL
	SIK	SOUTH INTERIOR KARNATAKA
	SKM	SIKKIM

	TLNGN	TELANGANA
	TN	TAMIL NADU
	TRP	TRIPURA
	UP	UTTAR PRADESH
	UTRKND	UTTARAKHAND
	VID	VIDHARBHA
	SHWB	SUB HIMALAYAN WEST BENGAL
	GWB	GANGETIC WEST BENGAL
	ARSEA	ARABIAN SEA
	ILS	ISLANDS
MISCELLANEOUS	ASSW	IN ASSOCIATION WITH
	ASSTD	ASSOCIATED
	LLC	LOW LEVEL CIRCULATION
	EMBDD	EMBEDDED
	N/HOOD	NEIGHBOURHOOD
	EXT	EXTREME