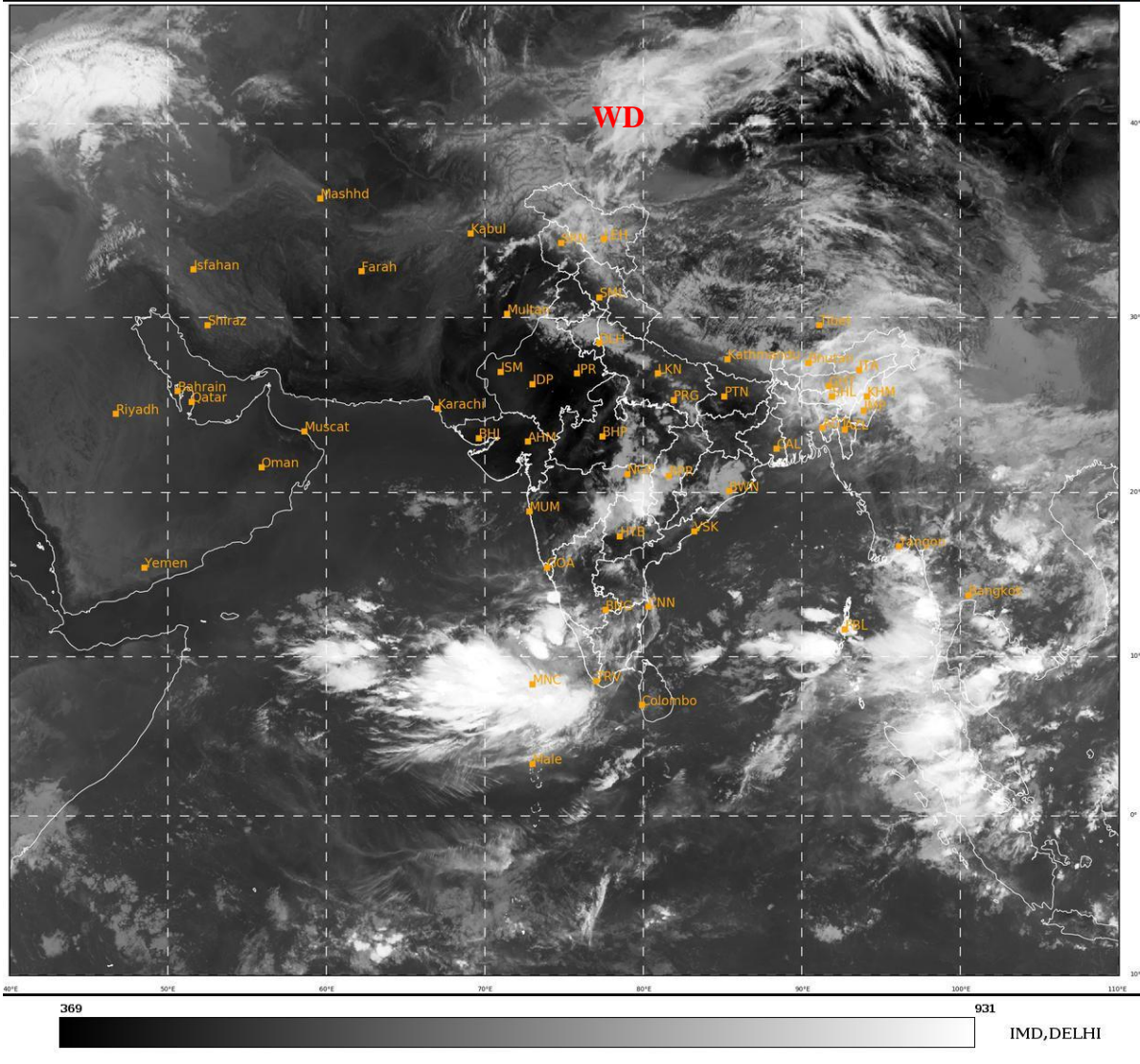




**SATELLITE BULLETIN BASED ON SATELLITE
IMAGERIES AND PRODUCTS
16.05.2022 TIME 0300 UTC**

SAT : INSAT-3DR IMG
IMG TIR1 10.8 um
L1C Mercator

16-05-2022/(0315 to 0342) GMT
16-05-2022/(0845 to 0912) IST



TCIN50 DEMS 160300

SATELLITE BULLETIN BASED ON INSAT-3DR PIC OF 160300 UTC (.)

REGION COVERED BETWEEN LAT 50.0°N TO 30.0°S AND LONG 40.0°E TO 125.0°E (.)

SALIENT FEATURES:-

WESTERN DISTURBANCE (WD):-

SCT MULTILAYERED CLOUDS OVER NE PAK LADAKH J&K HP PJB HARY ADJ NW RAJ DLH
NW UP N TIBET ADJ CHINA IN ASSW **WD** OVER THE AREA (.)

SCT MULTILAYERED CLOUDS OVER CASPEAN SEA AND N/HOOD IN ASSW ANOTHER WD
OVER THE AREA (.)

THUNDERSTORM / CONVECTIVE ACTIVITY:-

THUNDERSTORM / CONVECTIVE ACTIVITIES OBSERVED OVER SE VID ADJ N TLNGN E
ASSAM & LKSDP ILS (.)

CONVECTION OVER LAKSHADWEEP AREA:-

SCT TO BKN INTENSE TO VERY INTENSE CONVECTION OVER LKSDP ILS ADJ SE ARSEA
PERSISTS FROM LAST 24 HRS (.) MINIMUM CTT MINUS **93** DEG CEL (.)

DUST :-

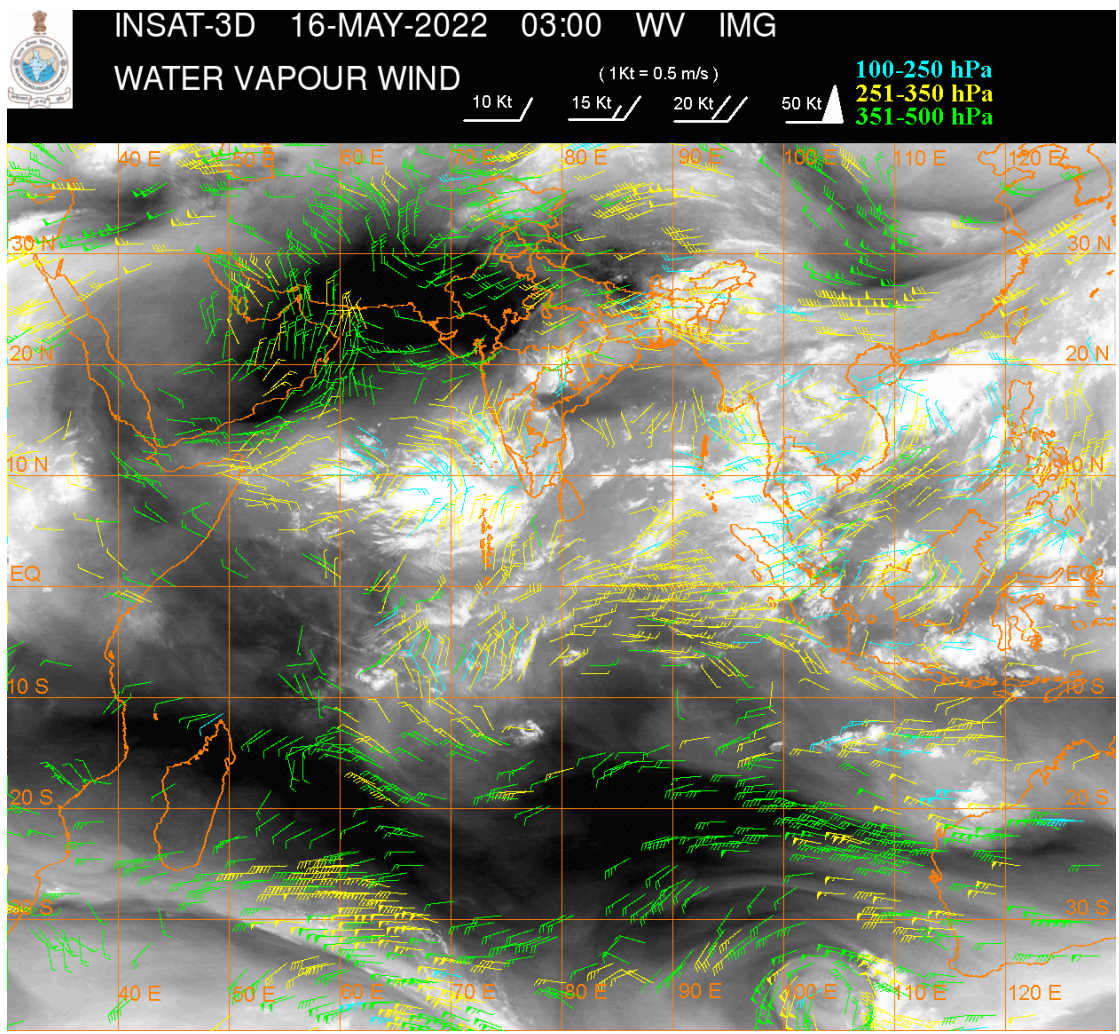
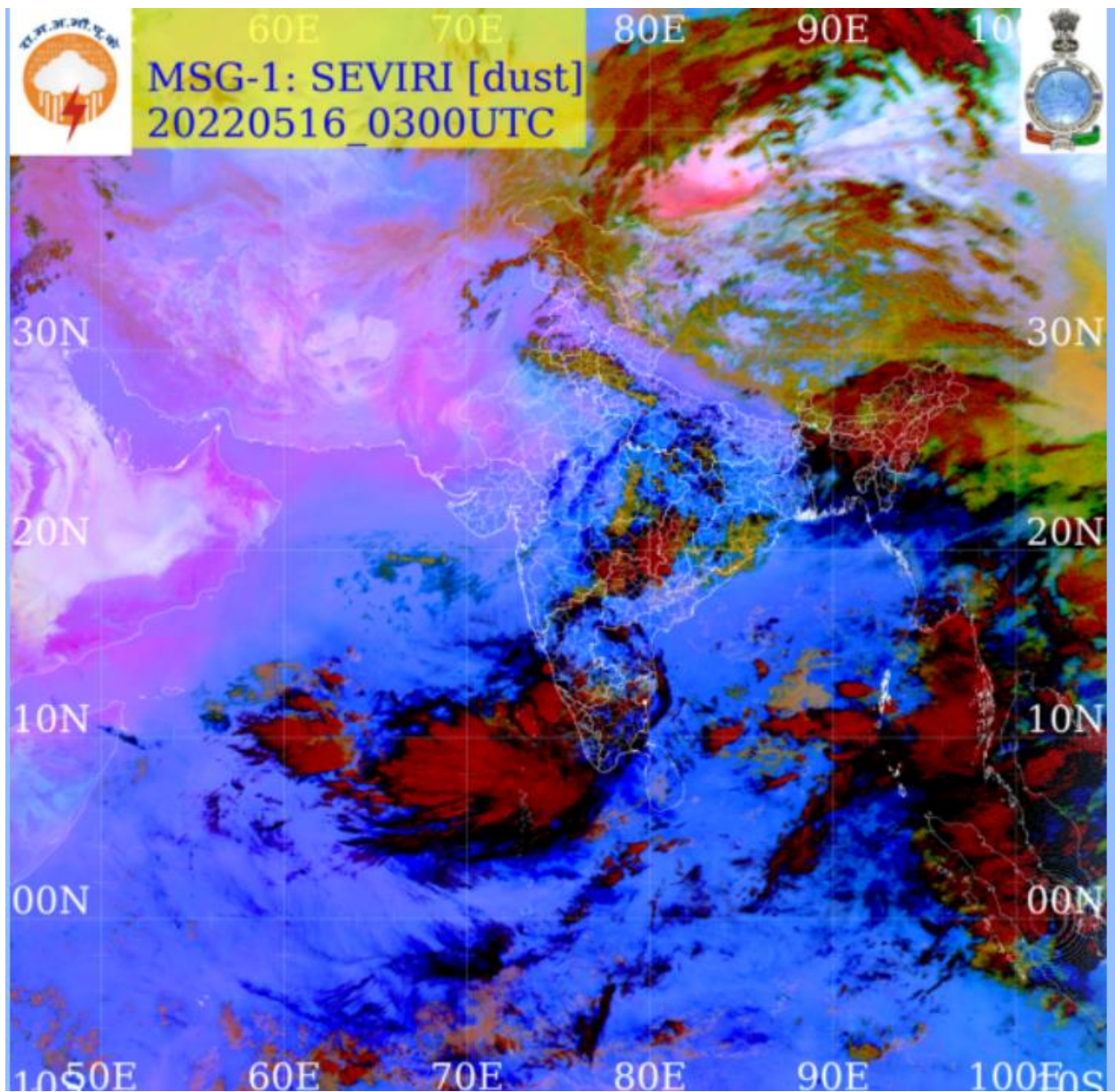
METOSAT-8 RGB PRODUCT AT 0300 UTC INDICATES DUST OVER S PAK SW RAJ (.)

PRECIPITATION NOWCASTING:-

(BASED ON SCOPE NOWCASTING TOOL AT 0300 UTC AT A LEAD TIME OF 03 HRS (MM/HR):-

RAINFALL UPTO 10 TO 20 MM LIKELY OVER SE ASSAM N TLNGN S MRTWD LKSDP ILS (.)

RAINFALL UPTO 0.5 TO 10 MM LIKELY OVER TN SIK S M MAHA NAGA MANI ANDAMAN & NICOBAR ILS (.)



CLOUDS DESCRIPTION WITHIN INDIA:-

NORTH:-

SCT LOW/MED CLOUDS WITH EMBDD WK TO MOD CONVTN OVER LADDAKH J&K HARY (.)
SCT LOW/MED CLOUDS OVER S PJB UP (.)

EAST:-

SCT TO BKN LOW/MED CLOUDS WITH EMBDD ISOL MOD TO INT CONVTN OVER S CHTGH E
ASSAM NAGA MANI ARUPR (.) SCT LOW/MED CLOUDS WITH EMBDD ISOL WK TO MOD
CONVTN OVER ORS REST NE STATES (.)

WEST:-

SCT LOW/MED CLOUDS WITH EMBDD MOD TO INT CONVTN OVER VID S MRTWD (.) SCT
LOW/MED CLOUDS WITH EMBDD WK TO MOD CONVTN OVER SE MP (.) SCT LOW/MED
CLOUDS OVER REST MP REST MAHA KKN GOA (.)

SOUTH:-

SCT TO BKN LOW/MED CLOUDS WITH EMBDD MOD TO INT CONVTN OVER N TLNGN KER
LKSDWP BAY IDS AND WK TO MOD CONVTN N RYLSMA REST TLNGN KRNTK KER TN ILS (.)
SCT LOW/MED CLOUDS OVER S COTL AP (.)

ARABIAN SEA:-

SCT TO BKN LOW/MED CLOUDS WITH EMBDD INT TO V INT CONVTN OVER S ARSEA (.)

BAY OF BENGAL & ANDAMAN SEA:-

SCT LOW/MED CLOUDS WITH EMBDD MOD TO INT CONVTN OVER S BAY ANDAMAN SEA &
GULF OF MARTABAN (.)

CLOUDS DESCRIPTION OUTSIDE INDIA:-

SCT LOW/MED CLOUDS WITH EMBDD MOD TO INT CONVTN OVER SRI LANKA MALDIVES E
NEPAL BHUTAN TIBET CHINA MYANMAR THAILAND GULF OF THAILAND CAMBODIA LAOS
VIETNAM SUMATRA STR OF MALACCA MALAY PENINSULA BORNEO SOUTH CHINA SEA
JAVA ILS & SEA CELEBES ILS & SEA PHILIPPINES TAIWAN E CHINA AND OVER INDIAN
OCEAN BET LAT EQ TO 10.0S LONG 60.0E TO 80.0E (.)

TOO 16/0940 HRS IST=

NNNN

LEGEND:-

REGION	NORTH	J&K HP PJB HARY DLH UP UTRKND
	EAST	BHR JHRKND CHTGH OR WB SKM NORTH- EAST STATES
	WEST	RAJ MP GUJ MAHA GOA
	SOUTH	TLNGN AP KRNTK KER TN LKSDP ANDAMAN & NICOBAR ILS

CLOUD DISTRIBUTION	ISOL	ISOLATED (LESS THAN 25%)
	SCT	SCATTERED (25 TO 50%)
	BKN	BROKEN (51 TO 75%)
	SLD	SOLID (GREATER THAN 75%)

CLOUDS TOP TEMPERATURE	CTT	CLOUD TOP TEMPERATURE	
CONVECTION	WK CONVTN	WEAK CONVECTION (CTT GREATER THAN -25°C)	
	MOD CONVTN	MODERATE CONVECTION (CTT BETWEEN -25°C TO -40°C)	
	INT CONVTN	INTENSE CONVECTION (CTT BETWEEN -41°C TO -70°C)	
	V INT CONVTN	VERY INTENSE CONVECTION (CTT LESS THAN -70°C)	
METEOROLOGICAL SUB-DIVISIONS, STATES & UNION TERRITORIES	ARUPR	ARUNACHAL PRADESH	
	BHR	BIHAR	
	CHTGH	CHHATTISGARH	
	COTL AP	COASTAL ANDHRA PRADESH	
	COTL KRNTK	COASTAL KARNATAKA	
	COTL ORS	COASTAL ORISSA	
	GUJ	GUJARAT	
	GWB	GANGETIC WEST BENGAL	
	HARY	HARYANA	
	DLH	DELHI	
	HP	HIMACHAL PRADESH	
	J&K	JAMMU AND KASHMIR	
	JHRKND	JHARKHAND	
	KER	KERALA	
	KKN	KONKAN	
	LKSDP	LAKSHADWEEP	
	M MAHA	MADHYA MAHARASHTRA	
	MAHA	MAHARASHTRA	
	MANI	MANIPUR	
	MEGHA	MEGHALAYA	
	MIZO	MIZORAM	
	MP	MADHYA PRADESH	
		MRTHWD	MARATHWADA
		NAGA	NAGALAND
N COTL AP		NORTH COASTAL ANDHRA PRADESH	
NIK		NORTH INTERIOR KARNATAKA	
ORS		ORISSA	
PJB		PUNJAB	
RAJ		RAJASTHAN	
RYLSM		RAYALASEEMA	
SAU & KUTCH		SAURASHTRA & KUTCH	
SHWB		SUB-HIMALAYAN WEST BENGAL	
SIK		SOUTH INTERIOR KARNATAKA	
SKM		SIKKIM	
TLNGN		TELANGANA	
TN		TAMIL NADU	
TRP		TRIPURA	
UP		UTTAR PRADESH	

	UTRKND	UTTARAKHAND
	VID	VIDHARBHA
	SHWB	SUB HIMALAYAN WEST BENGAL
	GWB	GANGETIC WEST BENGAL
	ARSEA	ARABIAN SEA
	ILS	ISLANDS
MISCELLANEOUS	ASSW	IN ASSOCIATION WITH
	ASSTD	ASSOCIATED
	LLC	LOW LEVEL CIRCULATION
	EMBDD	EMBEDDED
	N/HOOD	NEIGHBOURHOOD
	EXT	EXTREME