



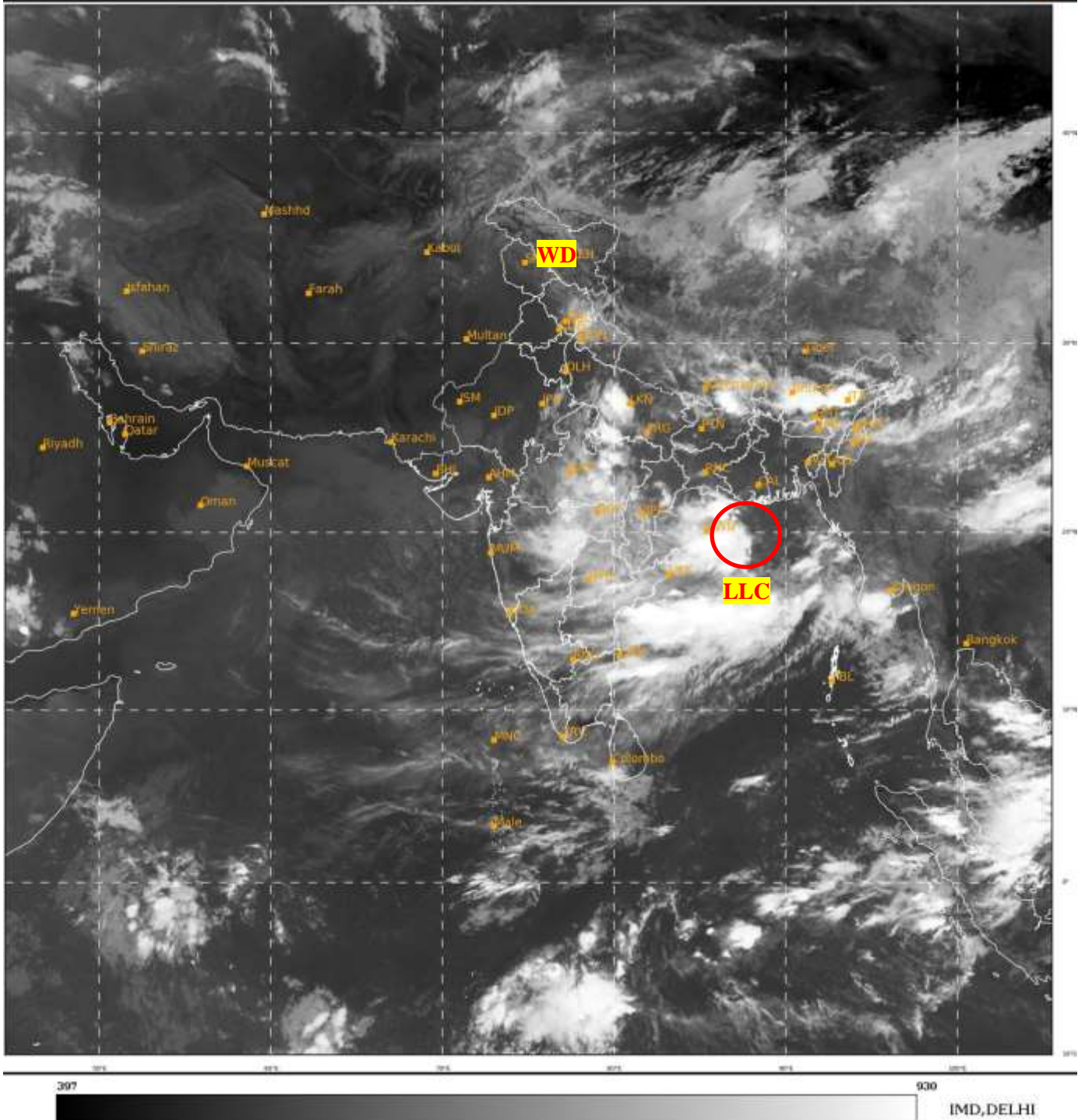
भारत मौसम विज्ञान विभाग
पृथ्वी विज्ञान मंत्रालय
India Meteorological Department
Ministry of Earth Sciences



**SATELLITE BULLETIN BASED ON SATELLITE
IMAGERIES AND PRODUCTS**
18.08.2023 TIME 0300 UTC

SAT : INSAT-3D IMG
IMG_TIR1 10.8 um
LIC Mercator

18-08-2023/(0300 to 0326) GMT
18-08-2023/(0830 to 0856) IST



TCIN50 DEMS 180300

SATELLITE BULLETIN BASED ON INSAT-3D PIC OF 180300 UTC (.)

REGION COVERED BETWEEN LAT 50.0°N TO 35.0°S AND LONG 40.0°E TO 125.0°E (.)

SALIENT FEATURES:-

LLC OVER NORTH-WEST BAY & N/HOOD :-

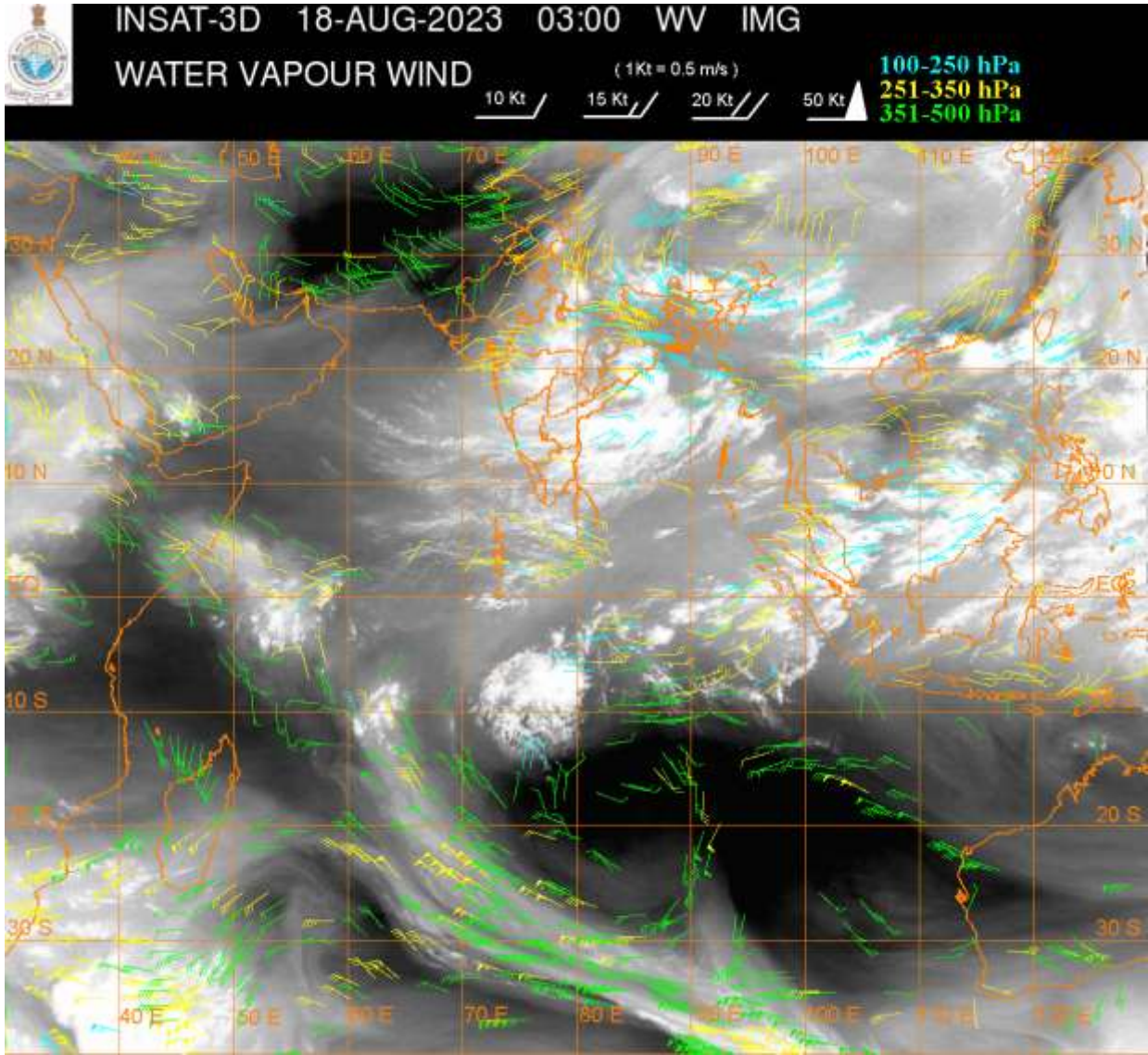
LOW LEVEL CIRCULATION (**LLC**) OVER NW BAY & N/HOOD (.) ASSTD SCT TO BKN LOW/MED CLOUDS WITH EMBDD INT TO V INT CONVTN OVER NW BAY E ORS (.) MINIMUM **CTT MINUS 93 DEG CEL** (.)

WESTERN DISTURBANCE (WD):-

SCT MULTILAYERED CLOUDS OVER LADAKH AND N/HOOD IN ASSW **WD** OVER THE AREA (.)

THUNDERSTORM / INTENSE CONVECTIVE ACTIVITY:-

**INTENSE THUNDERSTORM / CONVECTIVE ACTIVITY OBSERVED OVER CENTRAL & SW UP N
BHR CHTGH ORS ARUPR ASSAM MP MRTHWD VID TLNGN N COTL AP NE TN (.)**



CLOUDS DESCRIPTION WITHIN INDIA:-

NORTH:-

SCT TO BKN LOW/MED CLOUDS WITH EMBDD INT TO V INT CONVTN OVER CENTRAL UP (MINIMUM **CTT MINUS 85 DEG CEL) (.) SCT LOW/MED CLOUDS WITH EMBDD MOD TO INT CONVTN OVER E HP W UTRKND SW UP AND ISOL WK TO MOD CONVTN OVER LADAKH W HP E UTRKND REST UP (.) ISOL TO SCT LOW/MED CLOUDS OVER J&K PJB HARY (.)**

EAST:-

SCT TO BKN LOW/MED CLOUDS WITH EMBDD INT TO V INT CONVTN OVER EXT NE BHR (MINIMUM **CTT MINUS 80 DEG CEL) E ORS N ASSAM W ARUPR (MINIMUM **CTT MINUS 93 DEG** CEL) (.) SCT LOW/MED CLOUDS WITH EMBDD MOD TO INT CONVTN OVER NW BHR CHTGH W ORS SHWB REST ASSAM E ARUPR N MANI AND WK TO MOD CONVTN OVER REST BHR NW & S JHRKND SKM MEGHA NAGA S MANI (.) SCT LOW/MED CLOUDS OVER NE JHRKND GWB MIZO TRP & BD (.)**

WEST:-

SCT TO BKN LOW/MED CLOUDS WITH EMBDD INT TO V INT CONVTN OVER E MP (MINIMUM **CTT MINUS 75 DEG CEL) AND MOD TO INT CONVTN OVER W MP NORTH MADHYA MAHA MRTHWD VID (.) SCT LOW/MED CLOUDS WITH EMBDD ISOL WK TO MOD CONVTN OVER NE RAJ E GUJ SOUTH MADHYA MAHA KKN GOA (.) SCT LOW/MED CLOUDS OVER S RAJ W GUJ (.)**

SOUTH:-

SCT LOW/MED CLOUDS WITH EMBDD INT TO V INT CONVTN OVER N COTL AP (MINIMUM **CTT MINUS 75 DEG CEL) (.) SCT LOW/MED CLOUDS WITH EMBDD MOD TO INT CONVTN OVER S COTL KRNTK SW SIK TLNGN RYLSM S COTL AP NE TN (.) SCT LOW/MED CLOUDS WITH EMBDD WK TO MOD CONVTN OVER REST KRNTK KER REST TN (.) SCT LOW/MED CLOUDS OVER LKSDP ILS ANDAMAN & NICOBAR ILS (.)**

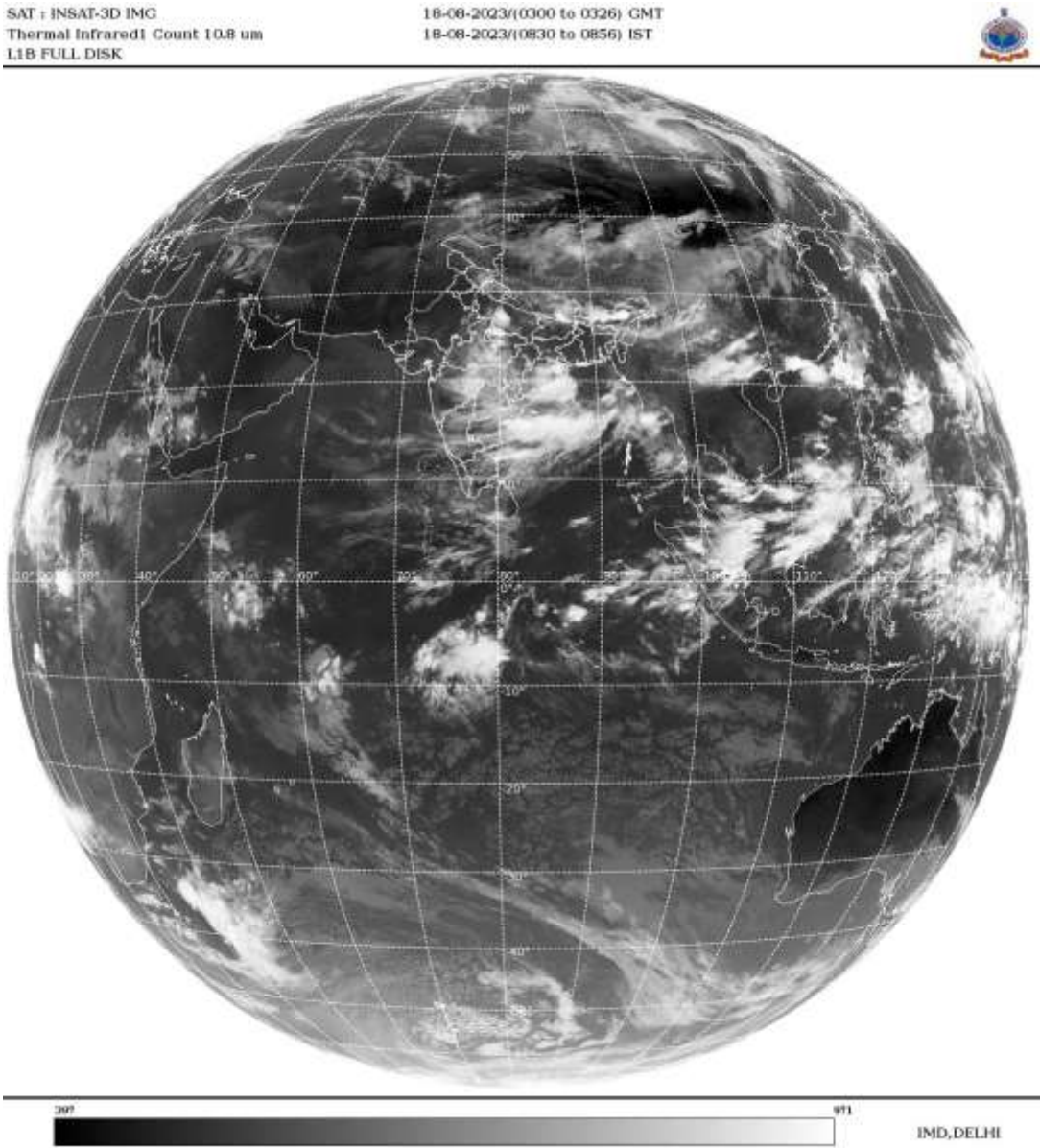
ARABIAN SEA:-

SCT LOW/MED CLOUDS WITH EMBDD MOD TO INT CONVTN OVER COMORIN AREA AND ISOL WK TO MOD CONVTN OVER CENTRAL & SE ARSEA LKSDP ILS AREA (.)

BAY OF BENGAL & ANDAMAN SEA:-

SCT TO BKN LOW/MED CLOUDS WITH EMBDD INT TO V INT CONVTN OVER NW & CENTRAL BAY AND SW BAY OFF N TN COAST (.) SCT LOW/MED CLOUDS WITH EMBDD MOD TO INT CONVTN OVER REST BAY N ANDAMAN SEA ARAKAN COAST GULF OF MARTABAN AND ISOL WK TO MOD CONVTN OVER S ANDAMAN SEA (.)

CLOUDS DESCRIPTION OUTSIDE INDIA:-



SCT LOW/MED CLOUDS WITH EMBDD MOD TO INT CONVTN OVER SRI LANKA MALDIVES NEPAL BHUTAN TIBET CHINA EAST CHINA SEA TAIWAN MYANMAR S THAILAND GULF OF THAILAND W CAMBODIA N LAOS VIETNAM GULF OF TONKIN SUMATRA STR OF MALACCA MALAYSIA BORNEO SOUTH CHINA SEA JAVA SEA CELEBES ILS & SEA PHILIPPINES SULU SEA AND OVER INDIAN OCEAN BET LAT 5.0N TO 10.0S LONG 50.0E TO 100.0E AND BET LAT 10.0S TO 20.0S LONG 60.0E TO 80.0E (.)

TOO 18/0940 HRS IST=

NNNN

LEGEND:-

REGION	NORTH	J&K HP PJB HARY DLH UP UTRKND
	EAST	BHR JHRKND CHTGH OR WB SKM NORTH- EAST STATES
	WEST	RAJ MP GUJ MAHA GOA
	SOUTH	TLNGN AP KRNTK KER TN LKSDP ANDAMAN & NICOBAR ILS
CLOUD DISTRIBUTION	ISOL	ISOLATED (LESS THAN 25%)
	SCT	SCATTERED (25 TO 50%)
	BKN	BROKEN (51 TO 75%)
	SLD	SOLID (GREATER THAN 75%)
CLOUDS TOP TEMPERATURE	CTT	CLOUD TOP TEMPERATURE
CONVECTION	WK CONVTN	WEAK CONVECTION (CTT GREATER THAN -25°C)
	MOD CONVTN	MODERATE CONVECTION (CTT BETWEEN -25°C TO -40°C)
	INT CONVTN	INTENSE CONVECTION (CTT BETWEEN -41°C TO -70°C)
	V INT CONVTN	VERY INTENSE CONVECTION (CTT LESS THAN -70°C)
METEOROLOGICAL SUB- DIVISIONS, STATES & UNION TERITORIES	ARUPR	ARUNACHAL PRADESH
	BHR	BIHAR
	CHTGH	CHHATTISGARH
	COTL AP	COASTAL ANDHRA PRADESH
	COTL KRNTK	COASTAL KARNATAKA
	COTL ORS	COASTAL ORISSA
	GUJ	GUJARAT
	GWB	GANGETIC WEST BENGAL
	HARY	HARYANA
	DLH	DELHI
	HP	HIMACHAL PRADESH
	J&K	JAMMU AND KASHMIR
	JHRKND	JHARKHAND
	KER	KERALA
	KKN	KONKAN
	LKSDP	LAKSHADWEEP
	M MAHA	MADHYA MAHARASHTRA
	MAHA	MAHARASHTRA
	MANI	MANIPUR
	MEGHA	MEGHALAYA
	MIZO	MIZORAM
	MP	MADHYA PRADESH
	MRTHWD	MARATHWADA
	NAGA	NAGALAND
	N COTL AP	NORTH COASTAL ANDHRA PRADESH
	NIK	NORTH INTERIOR KARNATAKA

	ORS	ORISSA
	PJB	PUNJAB
	RAJ	RAJASTHAN
	RYLSM	RAYALASEEMA
	SAU & KUTCH	SAURASHTRA & KUTCH
	SHWB	SUB-HIMALAYAN WEST BENGAL
	SIK	SOUTH INTERIOR KARNATAKA
	SKM	SIKKIM
	TLNGN	TELANGANA
	TN	TAMIL NADU
	TRP	TRIPURA
	UP	UTTAR PRADESH
	UTRKND	UTTARAKHAND
	VID	VIDHARBHA
	SHWB	SUB HIMALAYAN WEST BENGAL
	GWB	GANGETIC WEST BENGAL
	ARSEA	ARABIAN SEA
	ILS	ISLANDS
MISCELLANEOUS	ASSW	IN ASSOCIATION WITH
	ASSTD	ASSOCIATED
	LLC	LOW LEVEL CIRCULATION
	EMBDD	EMBEDDED
	N/HOOD	NEIGHBOURHOOD
	EXT	EXTREME