

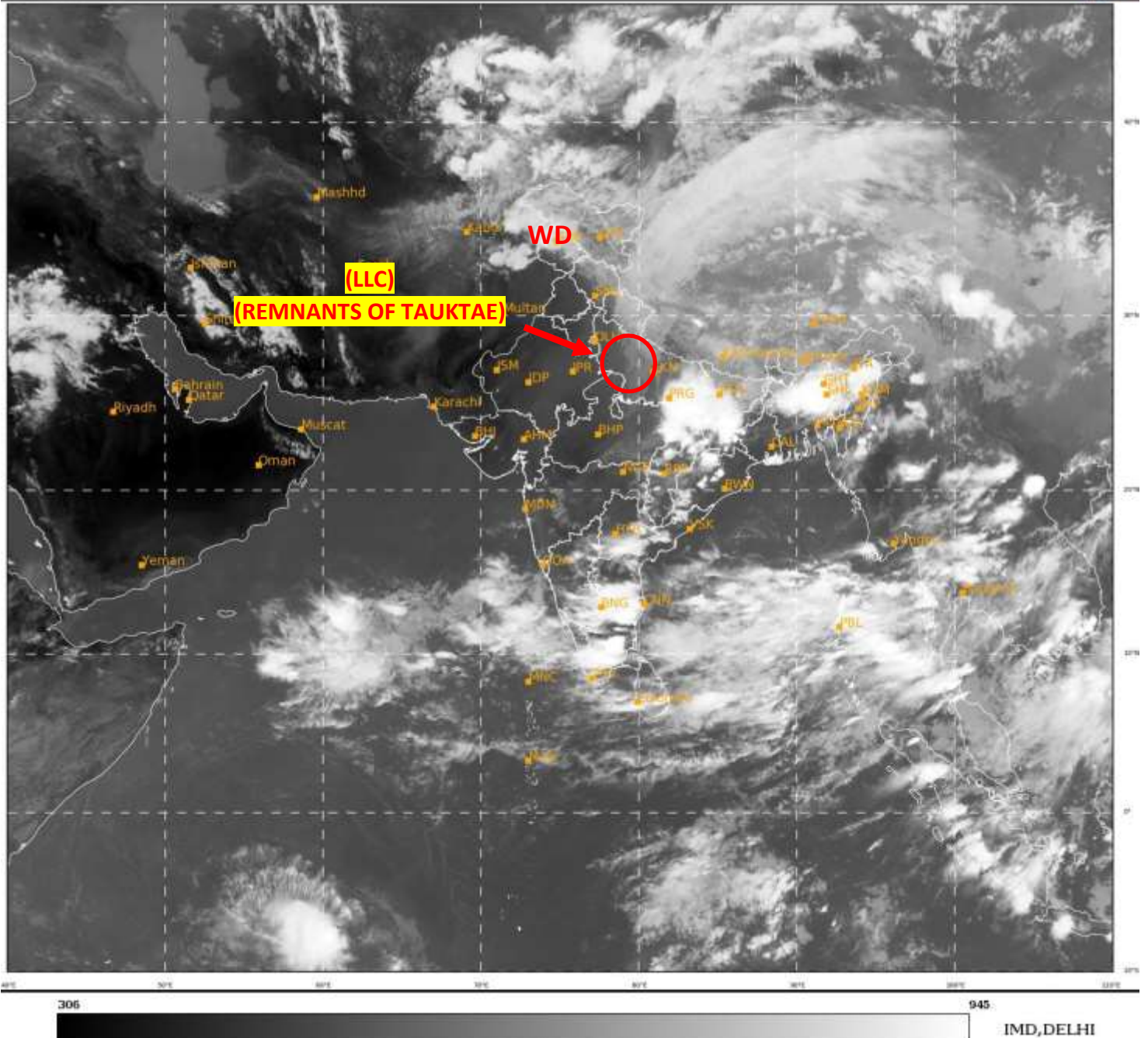


**SATELLITE BULLETIN BASED ON SATELLITE IMAGERIES  
AND PRODUCTS**

**20.05.2021 TIME 1200UTC**

SAT : INSAT-3D IMG  
IMG\_TIR1 10.8 um  
LIC Mercator

20-05-2021/(1200 to 1226) GMT  
20-05-2021/(1730 to 1756) IST



TCIN50 DEMS 201200

SATELLITE BULLETIN BASED ON INSAT-3D PICOV 201200UTC (.)

REGION COVERED BETWEEN LAT 50.0°N TO 30.0°S AND LONG 40.0°E TO 125.0°E (.)

**SALIENT FEATURES:-**

**LLC( REMNANTS OF TAUKTAE ) OVER SW UP & N/HOOD:-**

SCT LOW/MED CLOUDS WITH EMBDD INT TO V INT CONVTN OVER E UP ADJ NE MP W BHR AND WK TO MOD CONVTN OVER NC UP UTRKND & N/HOOD IN ASSW LOW LEVEL CIRCULATION (LLC) OVER THE AREA (.)

**WESTERN DISTURBANCE (WD):-**

SCT MULTILAYERED CLOUDS OVER N PAK J&K LADAKH HP UTRKND UP NEPAL TIBET ADJ CHINA & N/HOOD IN ASSW WD OVER THE AREA (.)



INSAT-3D 20-MAY-2021 12:00 WV IMG

WATER VAPOUR WIND

( 1Kt = 0.5 m/s )

10 Kt

15 Kt

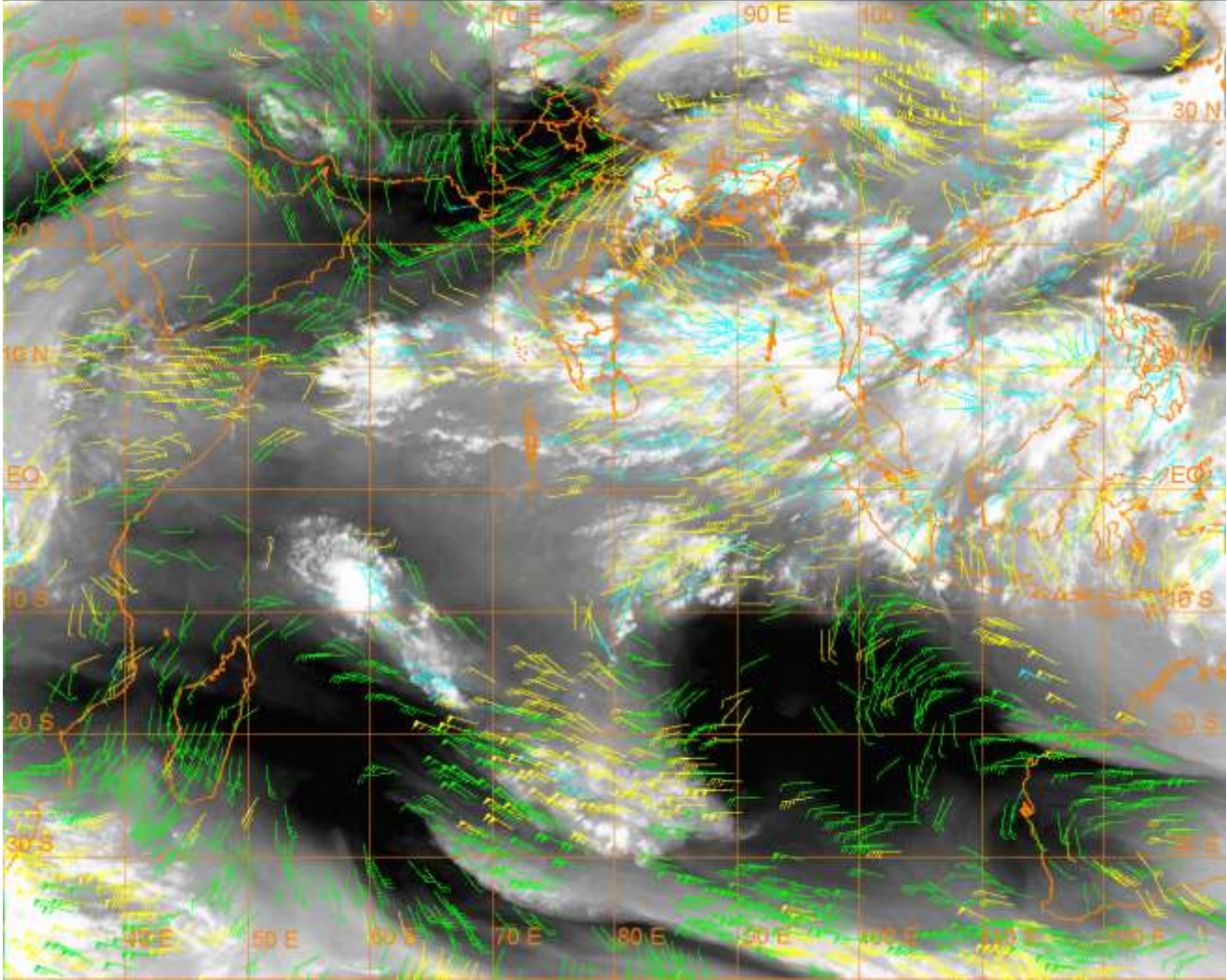
20 Kt

50 Kt

100-250 hPa

251-350 hPa

351-500 hPa



**CLOUDS DESCRIPTION WITHIN INDIA:-**

**NORTH:-**

SCT LOW/MED CLOUDS WITH EMBDD INT TO V INT CONVTN OVER E UP (MINIMUM CTT MINUS 93.0 DEG C ) (.) SCT LOW/MED CLOUDS WITH EMBDD MOD TO INT CONVTN OVER NW LADAKH N J&K AND WK TO MOD CONVTN OVER REST LADAKH S J&K N HP UTRKND NC UP (.) SCT LOW/MED CLOUDS OVER S HP EC HARY REST UP (.)

**EAST:-**

SCT TO BKN LOW/MED CLOUDS WITH EMBDD INT TO V INT CONVTN OVER W BHR JHRKND N CHTGH NW ORS WC GWB MEGHA ASSAM N NAGA & N BD (MINIMUM CTT MINUS 93.0 DEG C ) (.) SCT LOW/MED CLOUDS WITH EMBDD MOD TO INT CONVTN OVER REST BHR S CHTGH SW ORS SW ARUPR S NAGA N TRP (.) SCT LOW/MED CLOUDS WITH EMBDD WK TO MOD CONVTN OVER SKM SHWB REST NE STATES (.) SCT LOW/MED CLOUDS OVER REST GWB (.)

**WEST:-**

SCT LOW/MED CLOUDS WITH EMBDD INT TO V INT CONVTN OVER NE MP (MINIMUM CTT MINUS 93.0 DEG C ) (.) SCT LOW/MED CLOUDS WITH EMBDD ISOL WK TO MOD CONVTN OVER E VID M MAHA GOA (.) SCT LOW/MED CLOUDS OVER W RAJ S MP SW GUJ REST MAHA (.)

**SOUTH:-**

SCT TO BKN LOW/MED CLOUDS WITH EMBDD INT TO V INT CONVTN OVER SE SIK S TLNGN RYLSM S COTL AP S KER (MINIMUM CTT MINUS 87.0 DEG C ) TN(MINIMUM CTT MINUS 93.0 DEG C ) ANDAMAN ILS (MINIMUM CTT MINUS 85.0 DEG C ) (.) SCT LOW/MED CLOUDS WITH EMBDD MOD TO INT CONVTN OVER REST KRNTK N COTL AP N KER LKSDP NICOBAR ILS (.) SCT LOW/MED CLOUDS OVER N TLNGN (.)

**ARABIAN SEA:-**

SCT LOW/MED CLOUDS WITH EMBDD INT TO V INT CONVTN OVER WC ADJ SW ARSEA (.)  
SCT LOW/MED CLOUDS WITH EMBDD MOD TO INT CONVTN OVER EC & SE ARSEA AND COMORIN (.)

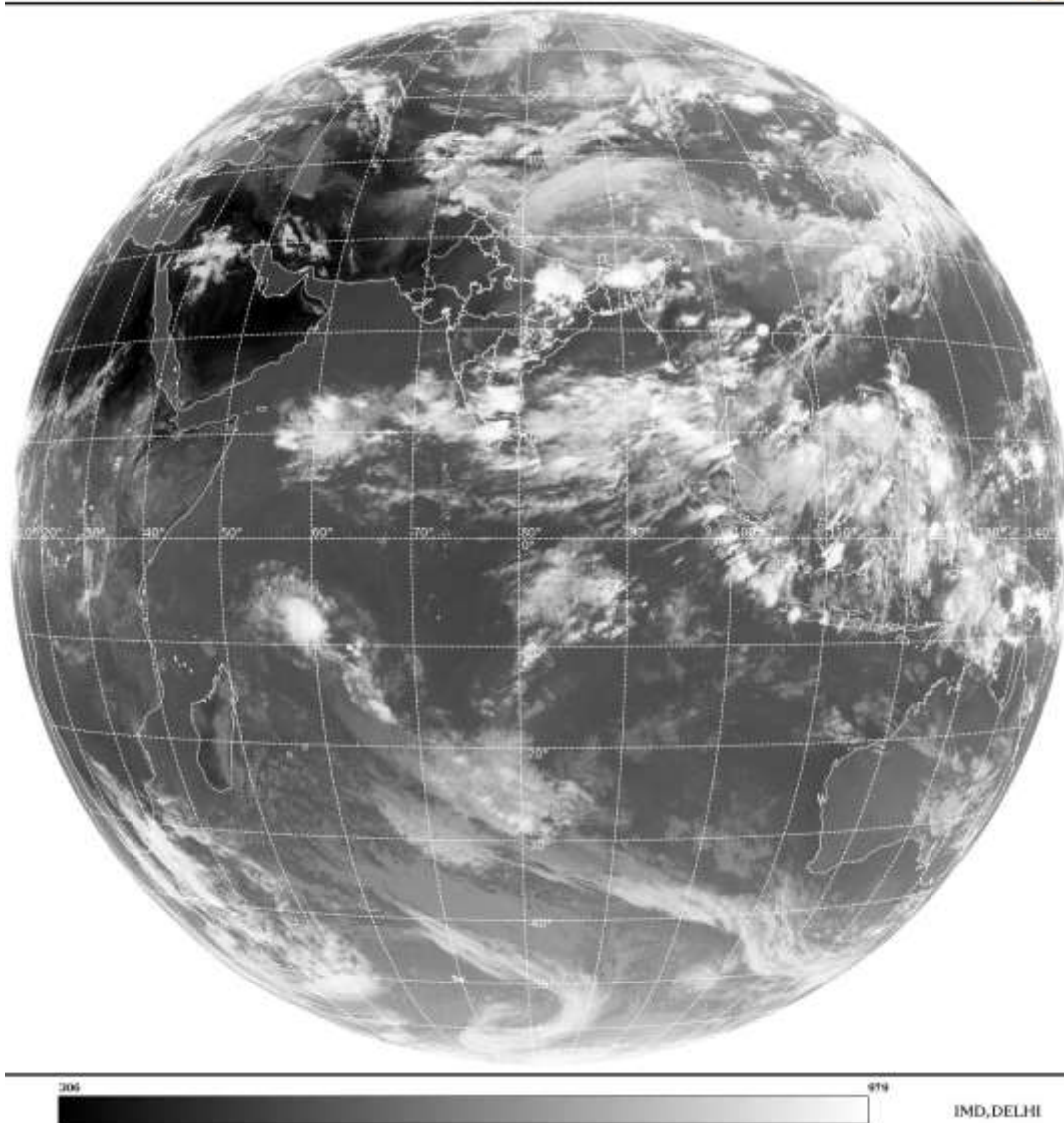
**BAY OF BENGAL & ANDAMAN SEA:-**

SCT TO BKN LOW/MED CLOUDS WITH EMBDD INT TO V INT CONVTN OVER BAY SOUTH OF LAT 16.0N AND ANDAMAN SEA (.)

**CLOUDS DESCRIPTION OUTSIDE INDIA:-**

SAT : INSAT-3D IMG  
Thermal InfraredI Count 10.8 um  
L1B FULL DISK

20-05-2021/(1200 to 1226) GMT  
20-05-2021/(1730 to 1756) IST



SCT LOW/MED CLOUDS WITH EMBDD MOD TO INT CONVTN OVER SRI LANKA PALK STR C MALDIVES NEPAL BHUTAN TIBET CHINA YELLOW SEA E CHINA SEA TAIWAN MYANMAR THAILAND GULF OF THAILAND CAMBODIA LAOS VIETNAM GULF OF TONKIN HAINAN SUMATRA ADJ W COAST STR OF MALACCA MALAY PENINSULA BORNEO S CHINA SEA JAVA ILS & SEA CELEBES ILS& SEA PHILIPPINES SULU SEA AND OVER INDIAN OCEAN BET LAT 5.0N TO EQ LONG 57.0E TO 95.0E AND BET LAT EQ TO 20.0S LONG 54.0E TO 90.0E (.)

TOO20/1850EF=

NNNN

**LEGEND:-**

|               |              |                                                              |
|---------------|--------------|--------------------------------------------------------------|
| <b>REGION</b> | <b>NORTH</b> | <b>J&amp;K HP PJB HARY DLH UP UTRKND</b>                     |
|               | <b>EAST</b>  | <b>BHR JHRKND CHTGH ORS WB SKMNORTH-EAST STATES</b>          |
|               | <b>WEST</b>  | <b>RAJ MP GUJ MAHA GOA</b>                                   |
|               | <b>SOUTH</b> | <b>TLNGN AP KRNTK KER TN LKSDP ANDAMAN &amp; NICOBAR ILS</b> |

|                                                                     |                       |                                                         |
|---------------------------------------------------------------------|-----------------------|---------------------------------------------------------|
| <b>CLOUD DISTRIBUTION</b>                                           | <b>ISOL</b>           | <b>ISOLATED (LESS THAN 25%)</b>                         |
|                                                                     | <b>SCT</b>            | <b>SCATTERED (25 TO 50%)</b>                            |
|                                                                     | <b>BKN</b>            | <b>BROKEN (51 TO 75%)</b>                               |
|                                                                     | <b>SLD</b>            | <b>SOLID (GREATER THAN 75%)</b>                         |
| <b>CLOUDS TOP TEMPERATURE</b>                                       | <b>CTT</b>            | <b>CLOUD TOP TEMPERATURE</b>                            |
| <b>CONVECTION</b>                                                   | <b>WK CONVTN</b>      | <b>WEAK CONVECTION (CTT GREATER THAN -25°C)</b>         |
|                                                                     | <b>MOD CONVTN</b>     | <b>MODERATE CONVECTION (CTT BETWEEN -25°C TO -40°C)</b> |
|                                                                     | <b>INT CONVTN</b>     | <b>INTENSE CONVECTION (CTT BETWEEN -41°C TO -70°C)</b>  |
|                                                                     | <b>V INT CONVTN</b>   | <b>VERY INTENSE CONVECTION (CTT LESS THAN -70°C)</b>    |
| <b>METEOROLOGICAL SUB-DIVISIONS, STATES &amp; UNION TERRITORIES</b> | <b>ARUPR</b>          | <b>ARUNACHAL PRADESH</b>                                |
|                                                                     | <b>BHR</b>            | <b>BIHAR</b>                                            |
|                                                                     | <b>CHTGH</b>          | <b>CHHATTISGARH</b>                                     |
|                                                                     | <b>COTL AP</b>        | <b>COASTAL ANDHRA PRADESH</b>                           |
|                                                                     | <b>COTL KRNTK</b>     | <b>COASTAL KARNATAKA</b>                                |
|                                                                     | <b>COTL ORS</b>       | <b>COASTAL ORISSA</b>                                   |
|                                                                     | <b>GUJ</b>            | <b>GUJARAT</b>                                          |
|                                                                     | <b>GWB</b>            | <b>GANGETIC WEST BENGAL</b>                             |
|                                                                     | <b>HARY</b>           | <b>HARYANA</b>                                          |
|                                                                     | <b>DLH</b>            | <b>DELHI</b>                                            |
|                                                                     | <b>HP</b>             | <b>HIMACHAL PRADESH</b>                                 |
|                                                                     | <b>J&amp;K</b>        | <b>JAMMU AND KASHMIR</b>                                |
|                                                                     | <b>JHRKND</b>         | <b>JHARKHAND</b>                                        |
|                                                                     | <b>KER</b>            | <b>KERALA</b>                                           |
|                                                                     | <b>KKN</b>            | <b>KONKAN</b>                                           |
|                                                                     | <b>LKSDP</b>          | <b>LAKSHADWEEP</b>                                      |
|                                                                     | <b>M MAHA</b>         | <b>MADHYA MAHARASHTRA</b>                               |
|                                                                     | <b>MAHA</b>           | <b>MAHARASHTRA</b>                                      |
|                                                                     | <b>MANI</b>           | <b>MANIPUR</b>                                          |
|                                                                     | <b>MEGHA</b>          | <b>MEGHALAYA</b>                                        |
| <b>MIZO</b>                                                         | <b>MIZORAM</b>        |                                                         |
| <b>MP</b>                                                           | <b>MADHYA PRADESH</b> |                                                         |

|                      |                        |                                     |
|----------------------|------------------------|-------------------------------------|
|                      | <b>MRTHWD</b>          | <b>MARATHWADA</b>                   |
|                      | <b>NAGA</b>            | <b>NAGALAND</b>                     |
|                      | <b>N COTL AP</b>       | <b>NORTH COASTAL ANDHRA PRADESH</b> |
|                      | <b>NIK</b>             | <b>NORTH INTERIOR KARNATAKA</b>     |
|                      | <b>ORS</b>             | <b>ORISSA</b>                       |
|                      | <b>PJB</b>             | <b>PUNJAB</b>                       |
|                      | <b>RAJ</b>             | <b>RAJASTHAN</b>                    |
|                      | <b>RYLSM</b>           | <b>RAYALASEEMA</b>                  |
|                      | <b>SAU &amp; KUTCH</b> | <b>SAURASHTRA &amp; KUTCH</b>       |
|                      | <b>SHWB</b>            | <b>SUB-HIMALAYAN WEST BENGAL</b>    |
|                      | <b>SIK</b>             | <b>SOUTH INTERIOR KARNATAKA</b>     |
|                      | <b>SKM</b>             | <b>SIKKIM</b>                       |
|                      | <b>TLNGN</b>           | <b>TELANGANA</b>                    |
|                      | <b>TN</b>              | <b>TAMIL NADU</b>                   |
|                      | <b>TRP</b>             | <b>TRIPURA</b>                      |
|                      | <b>UP</b>              | <b>UTTAR PRADESH</b>                |
|                      | <b>UTRKND</b>          | <b>UTTARAKHAND</b>                  |
|                      | <b>VID</b>             | <b>VIDHARBHA</b>                    |
|                      | <b>SHWB</b>            | <b>SUB HIMALAYAN WEST BENGAL</b>    |
|                      | <b>GWB</b>             | <b>GANGETIC WEST BENGAL</b>         |
|                      | <b>ARSEA</b>           | <b>ARABIAN SEA</b>                  |
|                      | <b>ILS</b>             | <b>ISLANDS</b>                      |
| <b>MISCELLANEOUS</b> | <b>ASSW</b>            | <b>IN ASSOCIATION WITH</b>          |
|                      | <b>ASSTD</b>           | <b>ASSOCIATED</b>                   |
|                      | <b>LLC</b>             | <b>LOW LEVEL CIRCULATION</b>        |
|                      | <b>EMBDD</b>           | <b>EMBEDDED</b>                     |
|                      | <b>N/HOOD</b>          | <b>NEIGHBOURHOOD</b>                |
|                      | <b>EXT</b>             | <b>EXTREME</b>                      |