

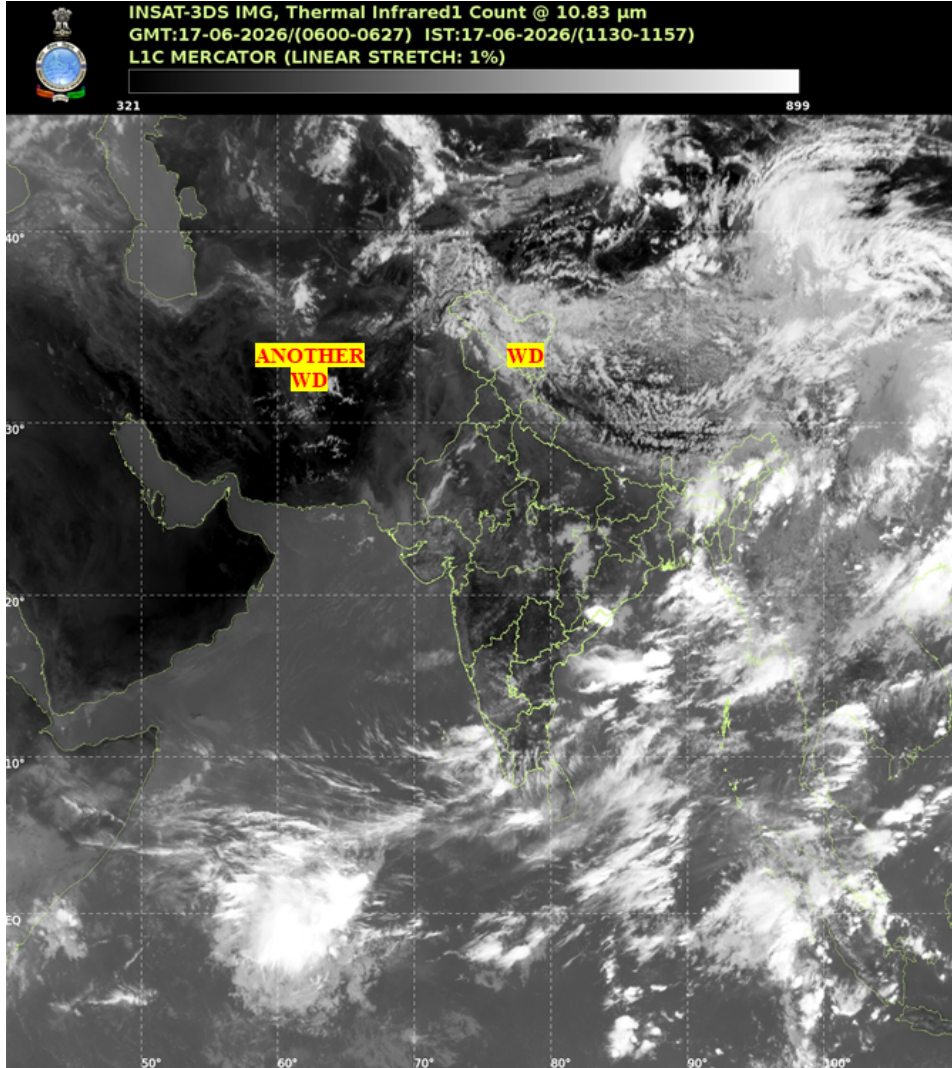


भारत मौसम विज्ञान विभाग
पृथ्वी विज्ञान मंत्रालय
India Meteorological Department
Ministry of Earth Sciences



SATELLITE BULLETIN BASED ON SATELLITE IMAGERIES AND PRODUCTS

Date: 2026-06-17 Time: 06:00:00 UTC



TCIN50 DEMS 170600

SATELLITE BULLETIN BASED ON INSAT-3DS PIC OF 170600 UTC (.)

REGION COVERED BETWEEN LAT 50.0°N TO 35.0°S AND LONG 40.0°E TO 125.0°E (.)

SALIENT FEATURES:

WESTERN DISTURBANCE (WD):-

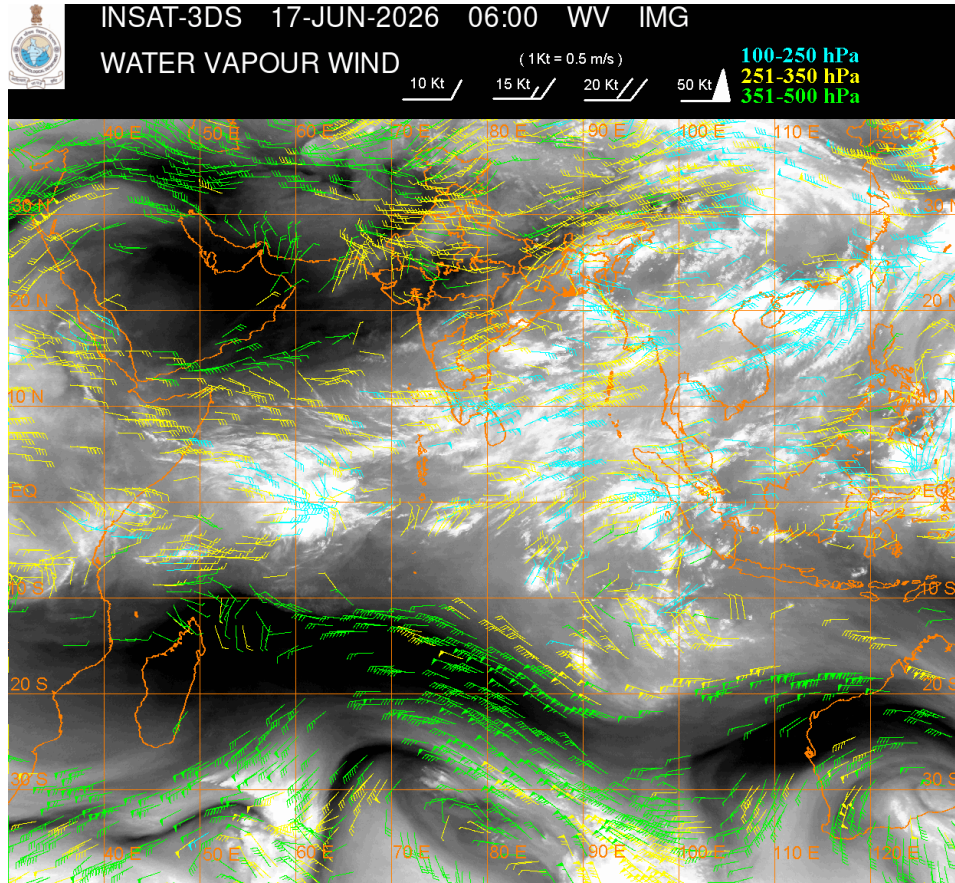
SCT MULTILAYERED CLOUDS OVER LADAKH J&K HP NORTH UTRKND TIBET ADJ CHINA IN ASSW
WD OVER THE AREA (.)

SCT MULTILAYERED CLOUDS OVER AFGAN AND N/HOOD IN ASSW ANOTHER WD OVER THE AREA
(.)

CONVECTIVE / THUNDERSTORM ACTIVITY:-

INTENSE TO VERY INTENSE CONVECTIVE / THUNDERSTORM ACTIVITY OVER ASSAM MEGHA NORTH BD N COTL AP ADJ SE ORS (MINIMUM CTT MINUS 70-80 DEGREE CELSIUS) (.)

MODERATE TO INTENSE CONVECTIVE / THUNDERSTORM ACTIVITY OVER LADAKH J&K ARUPR NAGA KER TN LKSDP ILS AREA ANDAMAN & NICOBAR ILS AREA (MINIMUM CTT MINUS 40-70 DEGREE CELSIUS) (.)



CLOUD DESCRIPTION WITHIN INDIA:

NORTH:

SCT LOW/MED CLOUDS WITH EMBDD MOD TO INT CONVTN OVER LADAKH J&K AND ISOL WK TO MOD CONVTN OVER HP N UTRKND (.) ISOL TO SCT LOW/MED CLOUDS OVER S UTRKND PJB UP (.)

EAST:

SCT TO BKN LOW/MED CLOUDS WITH EMBDD INT TO V INT CONVTN OVER SE ORS ASSAM MEGHA & N BD (.) SCT TO BKN LOW/MED CLOUDS WITH EMBDD MOD TO INT CONVTN OVER ARUPR NAGA AND WK TO MOD CONVTN OVER CHTGH ORS SHWB SKM REST NE STATES & S BD (.) SCT LOW/MED CLOUDS BHR JHRKND GWB (.)

WEST:

SCT LOW/MED CLOUDS WITH EMBDD WK TO MOD CONVTN OVER W RAJ E MP VID (.) SCT LOW/MED CLOUDS OVER GUJ E RAJ W MP REST MAHA GOA (.)

SOUTH:

SCT TO BKN LOW/MED CLOUDS WITH EMBDD INT TO V INT CONVTN OVER N COTL AP (.) SCT LOW/MED CLOUDS WITH EMBDD MOD TO INT CONVTN OVER S COTL AP KER TN LKSDP ILS AREA ANDAMAN & NICOBAR ILS AREA AND ISOL WK TO MOD CONVTN OVER KRNTK TLNGN RYLSM (.)

ARABIAN SEA:

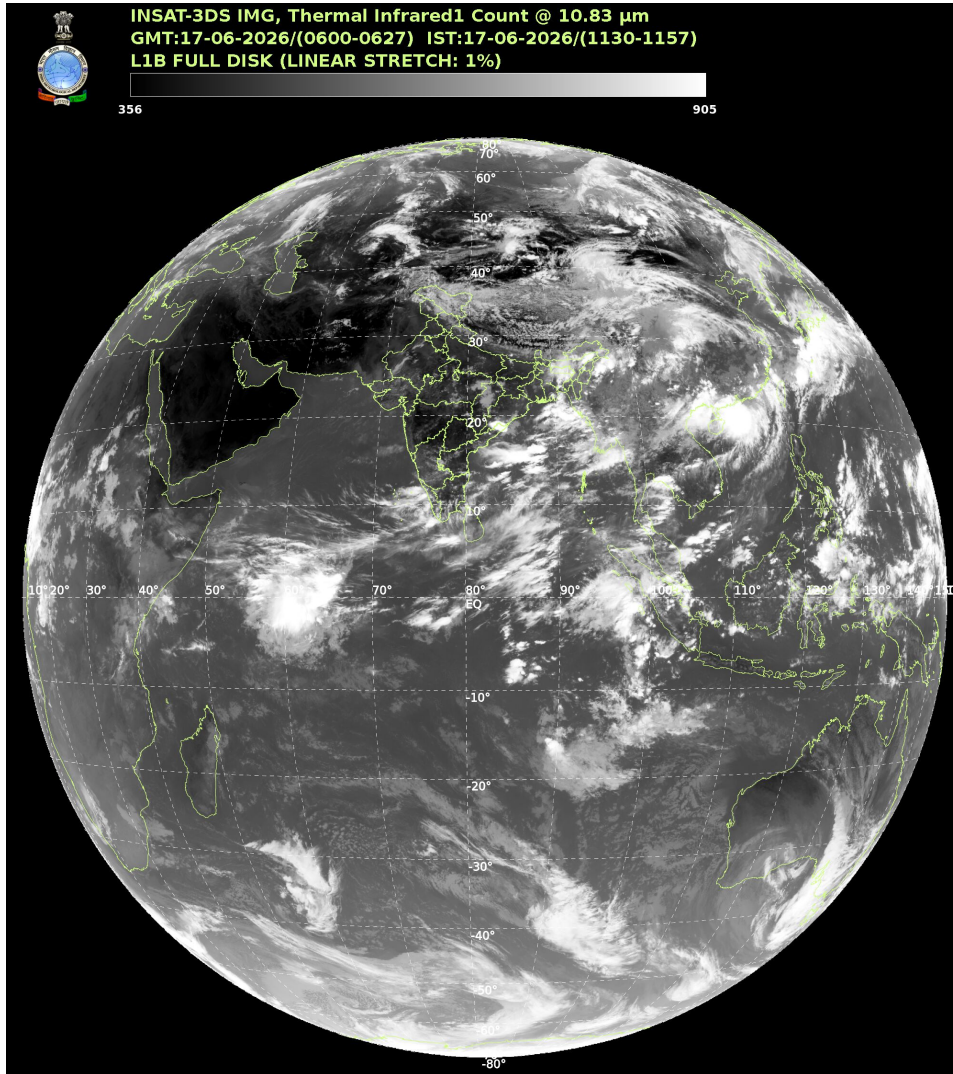
SCT LOW/MED CLOUDS WITH EMBDD MOD TO INT CONVTN OVER SE ARSEA LKSDP ILS AREA

MALDIVES & COMORIN AREA (.) SCT LOW/MED CLOUDS WITH EMBDD ISOL WK TO MOD CONVTN OVER SW ARSEA & NE ARSEA (.)

BAY OF BENGAL & ANDAMAN SEA:

SCT TO BKN LOW/MED CLOUDS WITH EMBDD INT TO V INT CONVTN OVER WC & NE BAY ARAKAN COAST GULF OF MARTABAN (.) SCT TO BKN LOW/MED CLOUDS WITH EMBDD MOD TO INT CONVTN OVER REST BAY ANDAMAN SEA (.)

CLOUD DESCRIPTION OUTSIDE INDIA:



SCT LOW/MED CLOUDS WITH EMBDD MOD TO INT CONVTN OVER SRI LANKA PALK STR GULF OF MANNAR MALDIVES AREA BHUTAN TIBET CHINA YELLOW SEA EAST CHINA SEA TAIWAN MYANMAR THAILAND GULF OF THAILAND CAMBODIA LAOS VIETNAM GULF OF TONKIN HAINAN SUMATRA STR OF MALACCA MALAYSIA BORNEO SOUTH CHINA SEA JAVA ILS & SEA CELEBES ILS & SEA PHILIPPINES SULU SEA AND OVER INDIAN OCEAN BET LAT 5.0N TO 20.0S LONG 50.0E TO 110.0E AND BET LAT 25.0S TO 35.0S LONG 50.0E TO 100.0E (.)

T00 17/1210 HRS IST

NNNN

LEGEND

REGION

| | |
|---|--|
| NORTH | J&K HP UTRKND PJB HARY DLH UP |
| EAST | BHR JHRKND CHTGH ORS WB SKM NORTH-EAST STATES |
| WEST | RAJ MP GUJ MAHA GOA |
| SOUTH | TLNGN AP KRNTK KER TN LKSDP ANDAMAN & NICOBAR ILS |
| CLOUD DISTRIBUTION | |
| ISOL | ISOLATED (LESS THAN 25%) |
| SCT | SCATTERED (25 TO 50%) |
| BKN | BROKEN (51 TO 75%) |
| SLD | SOLID (GREATER THAN 75%) |
| CLOUDS TOP TEMPERATURE | |
| CTT | CLOUD TOP TEMPERATURE |
| CONVECTION | |
| WK CONVTN | WEAK CONVECTION (CTT GREATER THAN -25°C) |
| MOD CONVTN | MODERATE CONVECTION (CTT BETWEEN -25°C TO -40°C) |
| INT CONVTN | INTENSE CONVECTION (CTT BETWEEN -41°C TO -70°C) |
| V INT CONVTN | VERY INTENSE CONVECTION (CTT LESS THAN -70°C) |
| METEOROLOGICAL SUB-DIVISIONS, STATES & UNION TERRITORIES | |
| J&K | JAMMU AND KASHMIR |
| HP | HIMACHAL PRADESH |
| UTRKND | UTTARAKHAND |
| PJB | PUNJAB |
| HARY | HARYANA |
| DLH | DELHI |
| BHR | BIHAR |
| JHRKND | JHARKHAND |
| CHTGH | CHHATTISGARH |
| ORS | ORISSA |
| GWB | GANGETIC WEST BENGAL |
| SHWB | SUB-HIMALAYAN WEST BENGAL |
| SKM | SIKKIM |
| ARUPR | ARUNACHAL PRADESH |
| ASSAM | ASSAM |
| MEGHA | MEGHALAYA |
| MANI | MANIPUR |

| | |
|------------------------|---------------------------------|
| MIZO | MIZORAM |
| TRP | TRIPURA |
| RAJ | RAJASTHAN |
| MP | MADHYA PRADESH |
| GUJ | GUJARAT |
| SAU & KUTCH | SAURASHTRA & KUTCH |
| MAHA | MAHARASHTRA |
| M MAHA | MADHYA MAHARASHTRA |
| MRTHWD | MARATHWADA |
| VID | VIDARBHA |
| KKN | KONKAN |
| TLNGN | TELANGANA |
| RYLSM | RAYALSEEMA |
| COTL AP | COASTAL ANDHRA PRADESH |
| NIK | NORTH INTERIOR KARNATAKA |
| SIK | SOUTH INTERIOR KARNATAKA |
| COTL KRNTK | COASTAL KARNATAKA |
| KER | KERALA |
| TN | TAMILNADU |
| LKSDP | LAKSHADWEEP |
| ILS | ISLANDS |
| ARSEA | ARABIAN SEA |
| MISCELLANEOUS | |
| ASSW | IN ASSOCIATION WITH |
| ASSTD | ASSOCIATED |
| LLC | LOW LEVEL CIRCULATION |
| EMBDD | EMBEDDED |
| N/HOOD | NEIGHBOURHOOD |
| EXT | EXTREME |