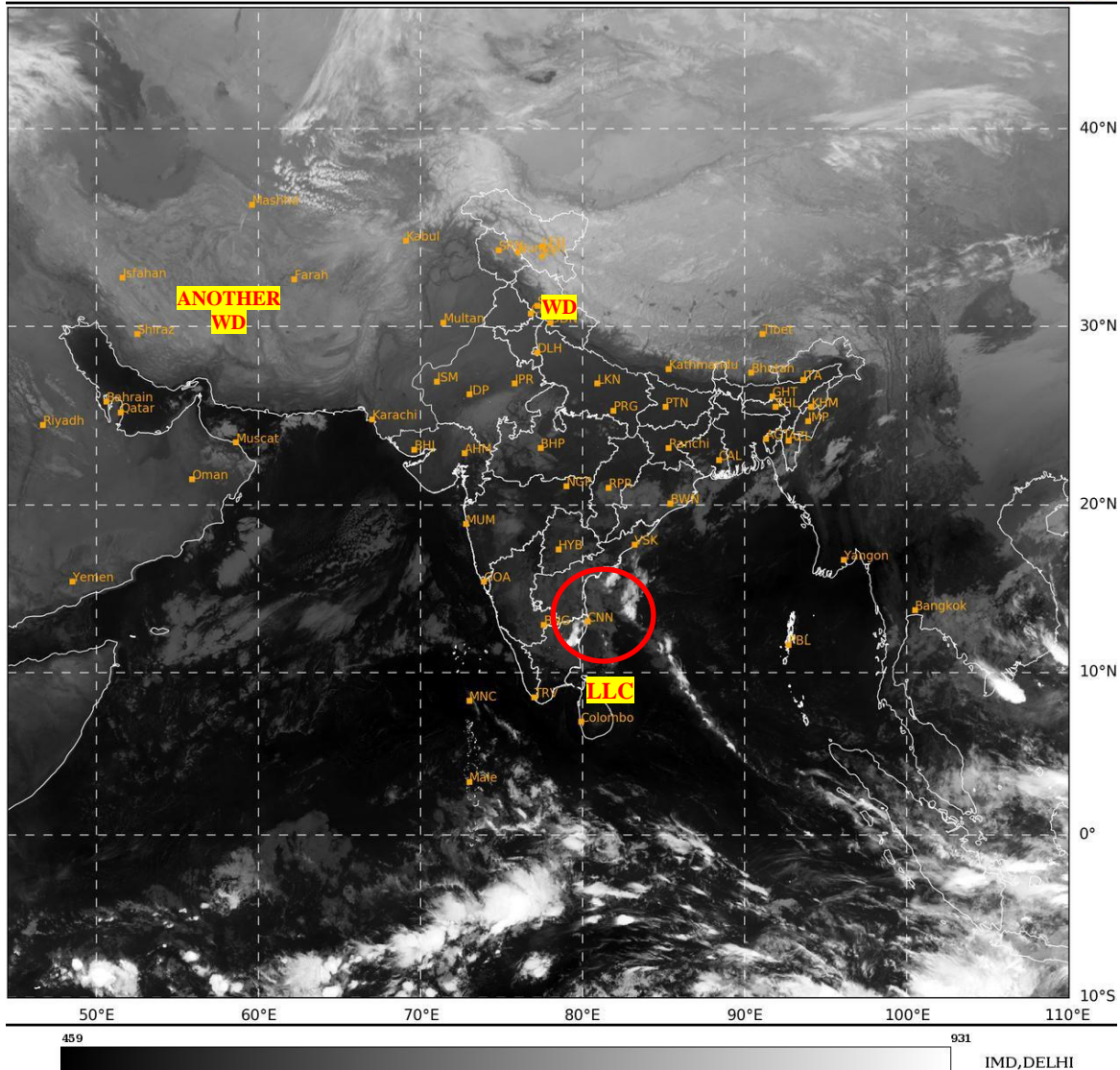




**SATELLITE BULLETIN BASED ON SATELLITE  
IMAGERIES AND PRODUCTS  
26.12.2024 TIME 0300 UTC**

SAT : INSAT-3DR IMG  
IMG\_TIR1 10.8 um  
LIC Mercator

26-12-2024/(0245 to 0312) GMT  
26-12-2024/(0815 to 0842) IST



TCIN50 DEMS 260300

SATELLITE BULLETIN BASED ON INSAT-3DR(RAPID) PIC OF 260245 UTC (.)

REGION COVERED BETWEEN LAT 50.0°N TO 35.0°S AND LONG 40.0°E TO 125.0°E (.)

**SALIENT FEATURES:-**

**LLC OVER SW ADJ WC BAY OFF SOUTH AP-NORTH TN COASTS:-**

LOW LEVEL CIRCULATION OVER SW ADJ WC BAY OFF SOUTH AP-NORTH TN COASTS (.)  
ASSTD SCT LOW / MED CLOUDS WITH EMBDD MOD TO INT CONVTN OVER NE TN ADJ S  
RYLSM WC ADJ SW BAY BET LAT 12.0N TO 17.0N LONG 80.0E TO 84.0E (MINIMUM **CTT MINUS  
60-70 DEG** CEL) AND WK TO MOD CONVTN OVER N COTL AP (.) SCT LOW/MED CLOUDS  
OVER KRNTK TLNGN RYLSM COTL AP REST TN S CHTGH ORS S JHRKND S GWB (.)

**WESTERN DISTURBANCE:-**

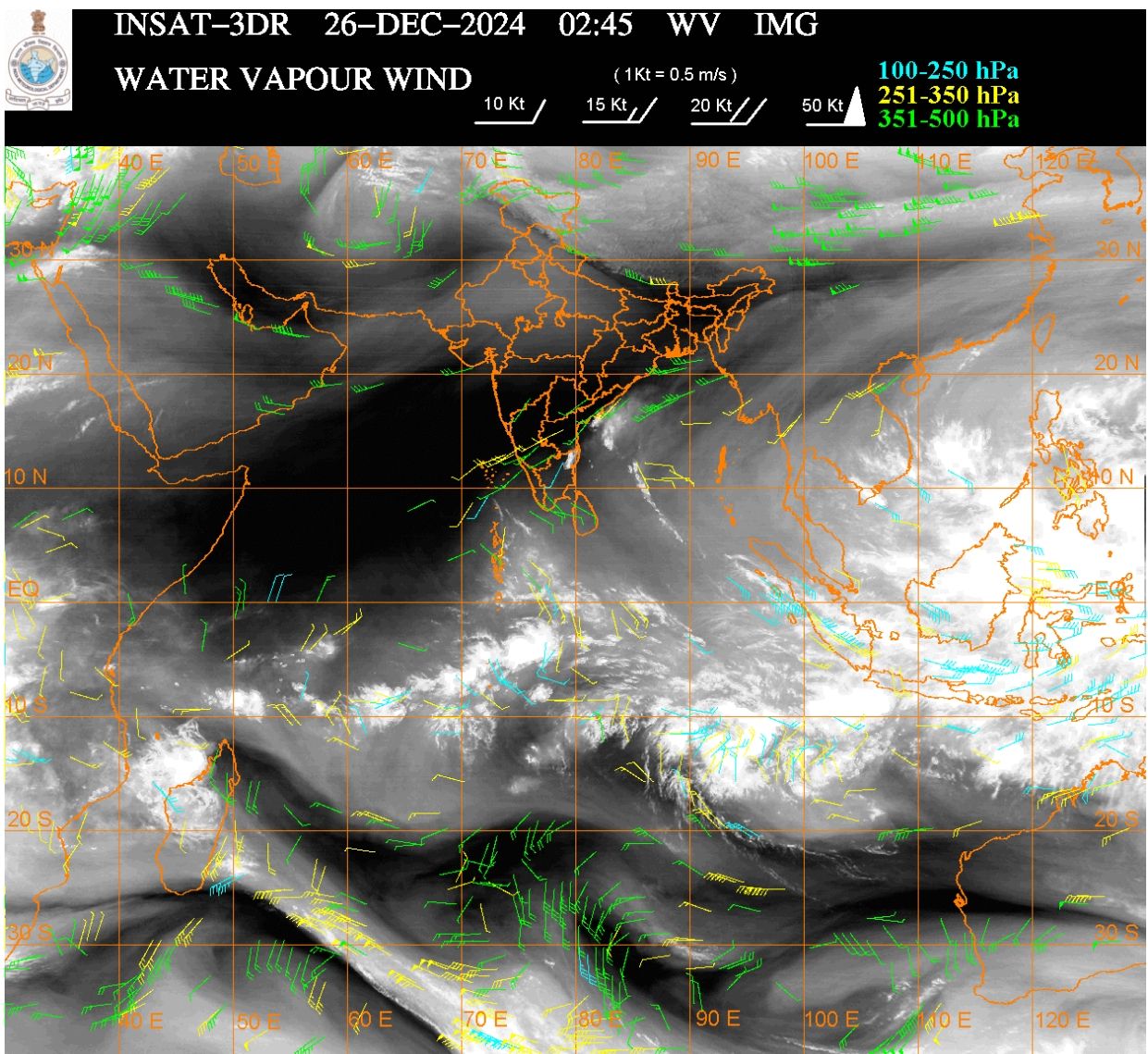
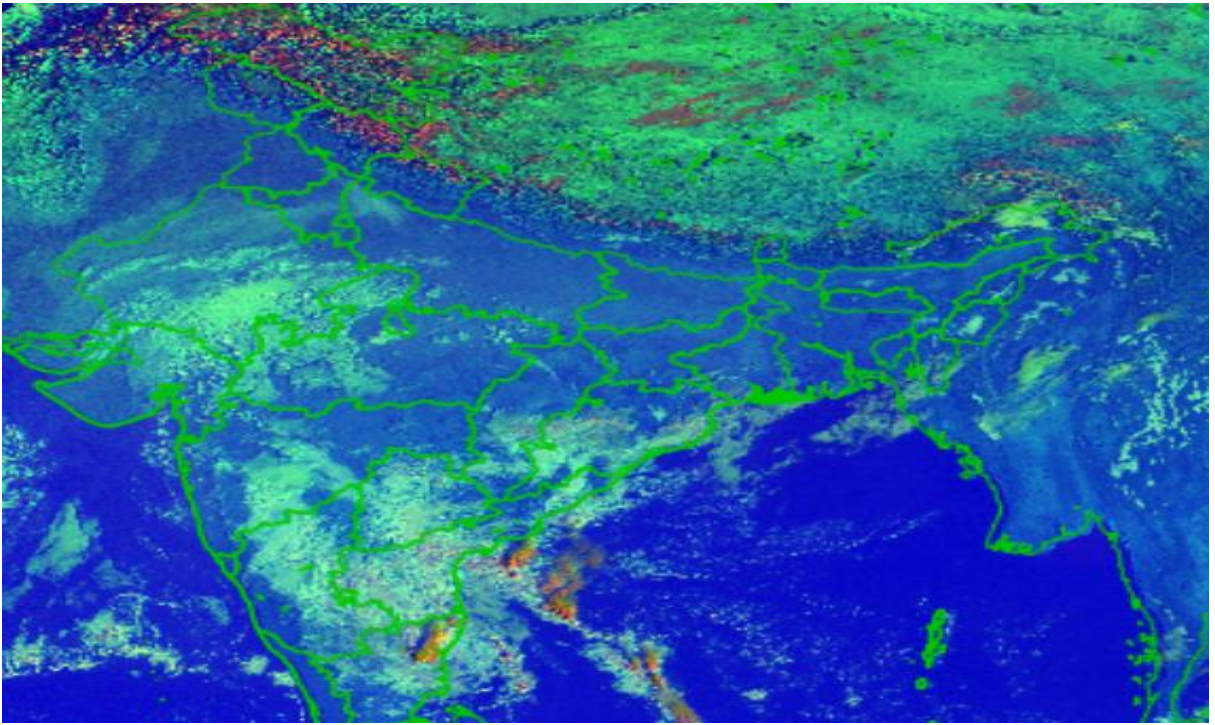
SCT MULTILAYERED CLOUDS OVER J&K LADAKH HP UTRKND TIBET ADJ CHINA IN ASSW  
**WD** OVER THE AREA (.)

SCT MULTILAYERED CLOUDS OVER IRAN TURKMENISTAN AFGAN AND N/HOOD IN ASSW  
**ANOTHER WD** OVER THE AREA (.)

**FOG / LOW CLOUDS:-**

NIGHT RGB MICROPHYSICS RAPID FOG PRODUCT AT 0245 UTC SHOWS ISOL TO SCT FOG /  
LOW CLOUDS OVER EC PAK RAJ PJB HARY W UP MP NAGA MANI S ASSAM MAHA(.)





**CLOUDS DESCRIPTION WITHIN INDIA:-**

**NORTH:-**

SCT LOW/MED CLOUDS WITH EMBDD WK TO MOD CONVTN OVER J&K LADAKH N HP N UTRKND (.) SCT LOW/MED CLOUDS OVER S HP S UTRKND W UP (.)

**EAST:-**

SCT LOW/MED CLOUDS WITH EMBDD WK TO MOD CONVTN OVER S CHTGH ORS S GWB SKM ARUPR (.) SCT LOW/MED CLOUDS OVER BHR JHRKND N CHTGH SHWB REST NE STATES (.)

**WEST:-**

SCT LOW/MED CLOUDS OVER E RAJ MP E GUJ MAHA (.)



**SOUTH:-**

SCT LOW/MED CLOUDS WITH EMBDD MOD TO INT CONVTN OVER N TN (.)SCT LOW/MED CLOUDS WITH EMBDD MOD TO INT CONVTN OVER N COTL AP (.) SCT LOW/MED CLOUDS KRNTK TLNGN RYLSM COTL AP KER REST TN LKSDP ILS AREA ANDAMAN & NICOBAR ILS (.)

**ARABIAN SEA:-**

SCT LOW/MED CLOUDS WITH EMBDD ISOL WK TO MOD CONVTN OVER ARSEA & COMORIN AREA (.)

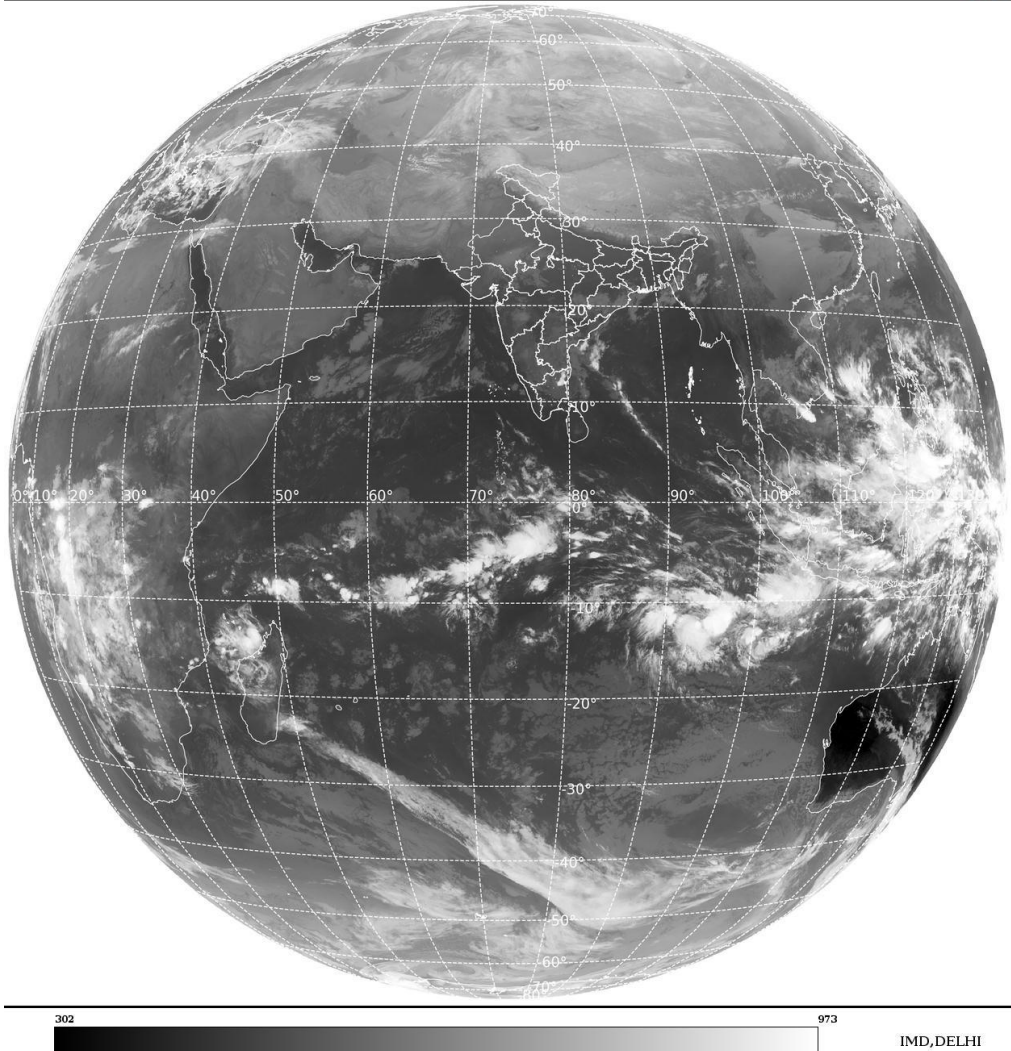
**BAY OF BENGAL & ANDAMAN SEA:-**

SCT LOW/MED CLOUDS WITH EMBDD MOD TO INT CONVTN OVER WC ADJ SW BAY BET LAT 12.0N TO 17.0N LONG 80.0E TO 85.5E (MINIMUM CTT MINUS 60-70 DEG CEL) (.) SCT LOW/MED CLOUDS WITH EMBDD ISOL WK TO MOD CONVTN OVER REST BAY AND ANDAMAN SEA (.)

**CLOUDS DESCRIPTION OUTSIDE INDIA:-**

SAT : INSAT-3DR IMG  
Thermal Infrared1 Count 10.8 um  
L1B FULL DISK

26-12-2024/(0245 to 0312) GMT  
26-12-2024/(0815 to 0842) IST



SCT LOW/MED CLOUDS WITH EMBDD MOD TO INT CONVTN OVER MALDIVES NEPAL BHUTAN TIBET CHINA YELLOW SEA EAST CHINA SEA TAIWAN MYANMAR THAILAND GULF OF THAILAND CAMBODIA LAOS VIETNAM GULF OF TONKIN HAINAN SUMATRA STR OF MALACCA MALAYSIA BORNEO SOUTH CHINA SEA JAVA ILS & SEA CELEBES ILS & SEA PHILIPPINES SULU SEA MADAGASCAR MOZAMBIQUE CHANNEL AND OVER INDIAN OCEAN BET LAT 5.0N TO 20.0S LONG 40.0E TO 125.0E (.)

TOO 26/1000 EF=

NNNN

**LEGEND:-**

	NORTH	J&K HP PJB HARY DLH UP UTRKND
--	-------	-------------------------------

<b>REGION</b>	<b>EAST</b>	<b>BHR JHRKND CHTGH ORS WB SKM NORTH- EAST STATES</b>
	<b>WEST</b>	<b>RAJ MP GUJ MAHA GOA</b>
	<b>SOUTH</b>	<b>TLNGN AP KRNTK KER TN LKSDP ANDAMAN &amp; NICOBAR ILS</b>
<b>CLOUD DISTRIBUTION</b>	<b>ISOL</b>	<b>ISOLATED (LESS THAN 25%)</b>
	<b>SCT</b>	<b>SCATTERED (25 TO 50%)</b>
	<b>BKN</b>	<b>BROKEN (51 TO 75%)</b>
	<b>SLD</b>	<b>SOLID (GREATER THAN 75%)</b>
<b>CLOUDS TOP TEMPERATURE</b>	<b>CTT</b>	<b>CLOUD TOP TEMPERATURE</b>
<b>CONVECTION</b>	<b>WK CONVTN</b>	<b>WEAK CONVECTION (CTT GREATER THAN -25°C)</b>
	<b>MOD CONVTN</b>	<b>MODERATE CONVECTION (CTT BETWEEN -25°C TO -40°C)</b>
	<b>INT CONVTN</b>	<b>INTENSE CONVECTION (CTT BETWEEN -41°C TO -70°C)</b>
	<b>V INT CONVTN</b>	<b>VERY INTENSE CONVECTION (CTT LESS THAN -70°C)</b>
<b>METEOROLOGICAL SUB- DIVISIONS, STATES &amp; UNION TERRITORIES</b>	<b>ARUPR</b>	<b>ARUNACHAL PRADESH</b>
	<b>BHR</b>	<b>BIHAR</b>
	<b>CHTGH</b>	<b>CHHATTISGARH</b>
	<b>COTL AP</b>	<b>COASTAL ANDHRA PRADESH</b>
	<b>COTL KRNTK</b>	<b>COASTAL KARNATAKA</b>
	<b>COTL ORS</b>	<b>COASTAL ORISSA</b>
	<b>GUJ</b>	<b>GUJARAT</b>
	<b>GWB</b>	<b>GANGETIC WEST BENGAL</b>
	<b>HARY</b>	<b>HARYANA</b>
	<b>DLH</b>	<b>DELHI</b>
	<b>HP</b>	<b>HIMACHAL PRADESH</b>
	<b>J&amp;K</b>	<b>JAMMU AND KASHMIR</b>
	<b>JHRKND</b>	<b>JHARKHAND</b>
	<b>KER</b>	<b>KERALA</b>
	<b>KKN</b>	<b>KONKAN</b>
	<b>LKSDP</b>	<b>LAKSHADWEEP</b>
	<b>M MAHA</b>	<b>MADHYA MAHARASHTRA</b>
	<b>MAHA</b>	<b>MAHARASHTRA</b>
	<b>MANI</b>	<b>MANIPUR</b>
	<b>MEGHA</b>	<b>MEGHALAYA</b>
	<b>MIZO</b>	<b>MIZORAM</b>
	<b>MP</b>	<b>MADHYA PRADESH</b>
		<b>MRTHWD</b>
<b>NAGA</b>		<b>NAGALAND</b>
<b>N COTL AP</b>		<b>NORTH COASTAL ANDHRA PRADESH</b>
<b>NIK</b>		<b>NORTH INTERIOR KARNATAKA</b>
<b>ORS</b>		<b>ORISSA</b>
<b>PJB</b>		<b>PUNJAB</b>
<b>RAJ</b>		<b>RAJASTHAN</b>

	<b>RYLSM</b>	<b>RAYALASEEMA</b>
	<b>SAU &amp; KUTCH</b>	<b>SAURASHTRA &amp; KUTCH</b>
	<b>SHWB</b>	<b>SUB-HIMALAYAN WEST BENGAL</b>
	<b>SIK</b>	<b>SOUTH INTERIOR KARNATAKA</b>
	<b>SKM</b>	<b>SIKKIM</b>
	<b>TLNGN</b>	<b>TELANGANA</b>
	<b>TN</b>	<b>TAMIL NADU</b>
	<b>TRP</b>	<b>TRIPURA</b>
	<b>UP</b>	<b>UTTAR PRADESH</b>
	<b>UTRKND</b>	<b>UTTARAKHAND</b>
	<b>VID</b>	<b>VIDHARBHA</b>
	<b>SHWB</b>	<b>SUB HIMALAYAN WEST BENGAL</b>
	<b>GWB</b>	<b>GANGETIC WEST BENGAL</b>
	<b>ARSEA</b>	<b>ARABIAN SEA</b>
	<b>ILS</b>	<b>ISLANDS</b>
<b>MISCELLANEOUS</b>	<b>ASSW</b>	<b>IN ASSOCIATION WITH</b>
	<b>ASSTD</b>	<b>ASSOCIATED</b>
	<b>LLC</b>	<b>LOW LEVEL CIRCULATION</b>
	<b>EMBDD</b>	<b>EMBEDDED</b>
	<b>N/HOOD</b>	<b>NEIGHBOURHOOD</b>
	<b>EXT</b>	<b>EXTREME</b>