



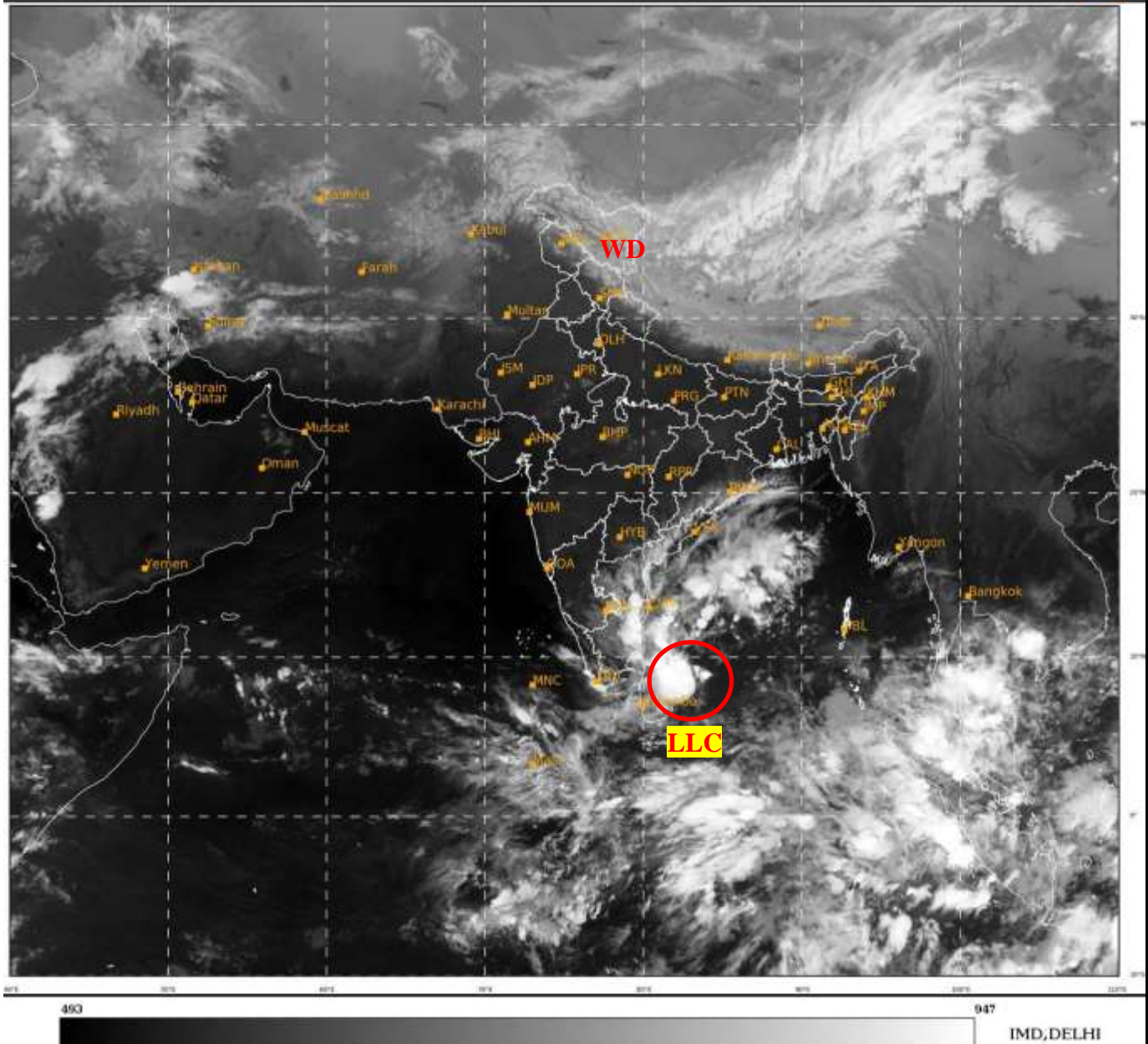
भारत मौसम विज्ञान विभाग
पृथ्वी विज्ञान मंत्रालय
India Meteorological Department
Ministry of Earth Sciences



**SATELLITE BULLETIN BASED ON SATELLITE
IMAGERIES AND PRODUCTS
10.11.2022 TIME 1500 UTC**

SAT : INSAT-3D IMG
IMG_TIR1 10.8 um
LIC Mercator

10-11-2022/(1500 to 1526) GMT
10-11-2022/(2030 to 2056) IST



TCIN50 DEMS 101500

SATELLITE BULLETIN BASED ON INSAT-3D PIC OF 101500 UTC (.)

REGION COVERED BETWEEN LAT 50.0°N TO 35.0°S AND LONG 40.0°E TO 125.0°E (.)

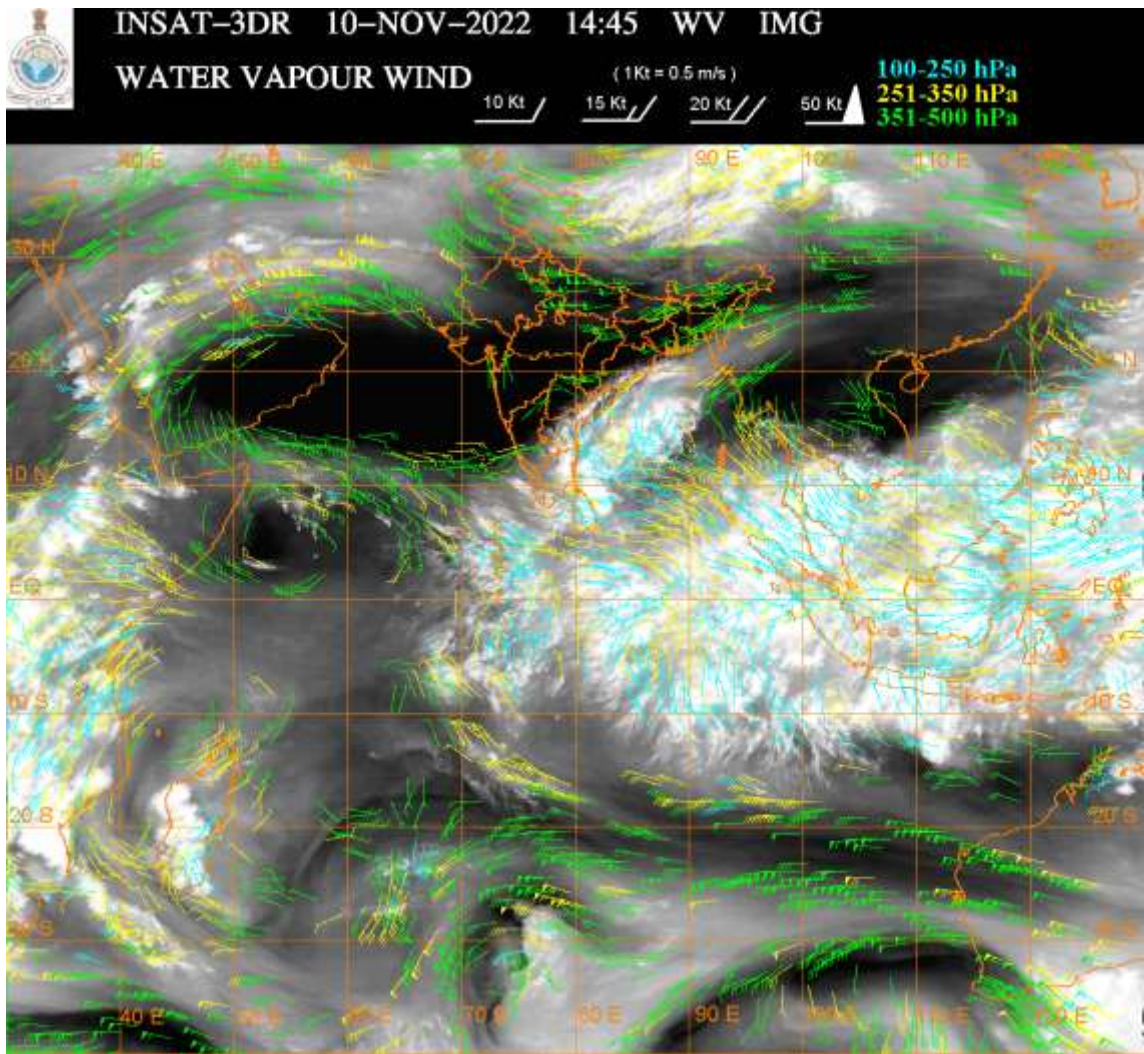
SALIENT FEATURES:-

LLC OVER SOUTH-WEST BAY OFF EAST SRI LANKA COAST & N/HOOD :-

LLC OVER SW BAY OFF E SRI LANKA COAST & N/HOOD (.) ASSTD SCT TO BKN LOW/MED CLOUDS WITH EMBDD INT TO V INT CONVTN OVER SW BAY SRI LANKA & N/HOOD (.) MINIMUM CTT MINUS 93 DEG CELSIUS (.)

WESTERN DISTURBANCE (WD):-

SCT MULTILAYERED CLOUDS OVER LADAKH TIBET ADJ CHINA IN ASSW **WD** OVER THE AREA (.)



CLOUDS DESCRIPTION WITHIN INDIA:-

NORTH:-

SCT LOW/MED CLOUDS WITH EMBDD MOD TO INT CONVTN OVER LADAKH (.) SCT LOW/MED CLOUDS WITH EMBDD WK TO MOD CONVTN OVER J&K N HP N UTRKND SW UP (.) SCT LOW/MED CLOUDS OVER S HP S UTRKND (.)

EAST:-

SCT LOW/MED CLOUDS WITH EMBDD MOD TO INT CONVTN OVER E ORS (.) SCT LOW/MED CLOUDS WITH EMBDD WK TO MOD CONVTN OVER S CHTGH SW ORS N SHWB SKM ARUPR S MANI EC MIZO (.) SCT LOW/MED CLOUDS OVER S BHR S JHRKND N CHTGH NW ORS GWB REST NE STATES (.)

WEST:-

SCT LOW/MED CLOUDS WITH EMBDD ISOL WK CONVTN OVER E RAJ MP (.) SCT LOW/MED CLOUDS OVER SW RAJ N VID GOA (.)

SOUTH:-

SCT TO BKN LOW/MED CLOUDS WITH EMBDD INT TO V INT CONVTN OVER S RYLSM S COTL KER (MINIMUM CTT **MINUS 75 DEG CEL**) NE TN (MINIMUM CTT **MINUS 89 DEG CEL**) (.) SCT LOW/MED CLOUDS WITH EMBDD MOD TO INT CONVTN OVER SE SIK N RYLSM COTL AP S TN (.) SCT LOW/MED CLOUDS WITH EMBDD WK TO MOD CONVTN OVER S TLNGN REST KER NW TN NICOBAR ILS (.) SCT LOW/MED CLOUDS OVER REST KRNTK LKSDP ILS ANDAMAN ILS (.)

ARABIAN SEA:-

SCT LOW/MED CLOUDS WITH EMBDD INT TO V INT CONVTN OVER SE ARSEA ADJ S KER COAST (.) SCT LOW/MED CLOUDS WITH EMBDD MOD TO INT CONVTN OVER REST SOUTH ARSEA AND COMORIN AREA (.)

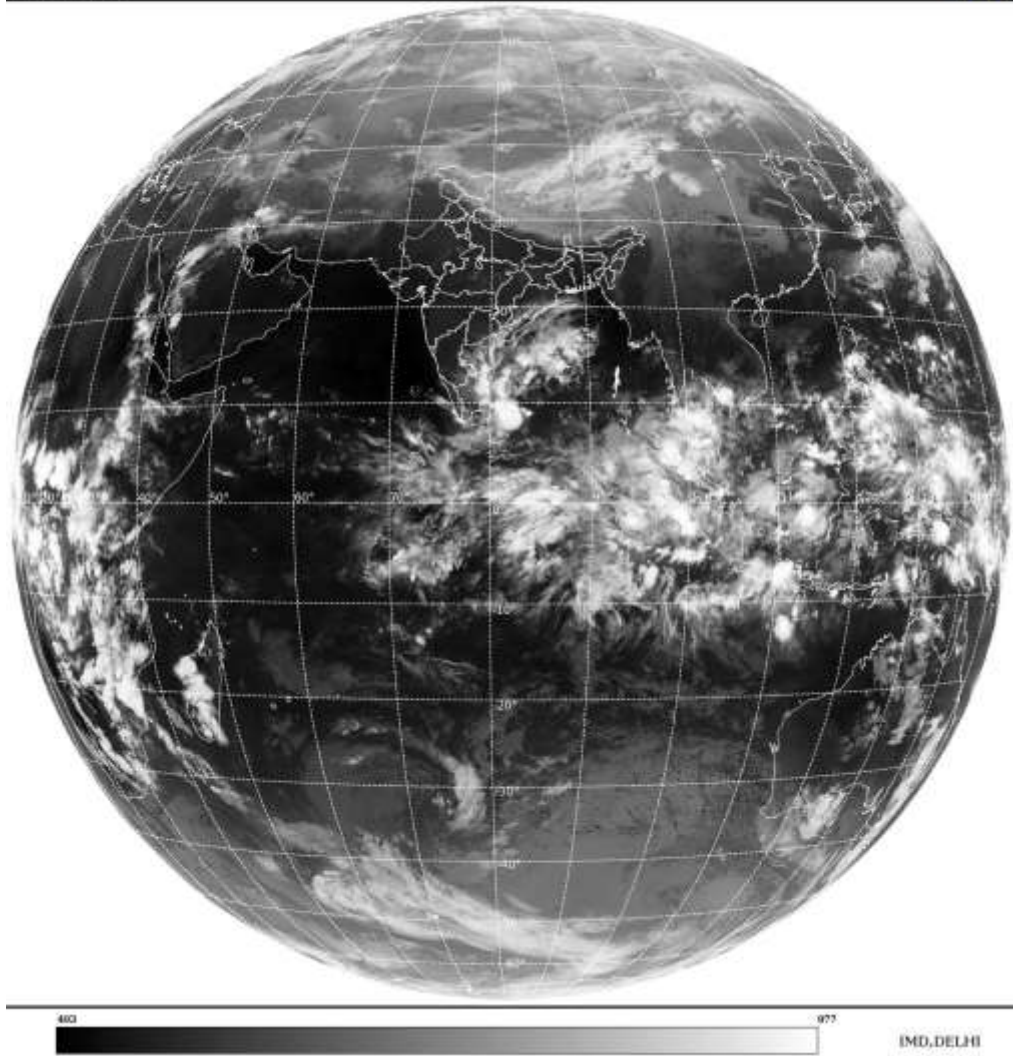
BAY OF BENGAL & ANDAMAN SEA:-

SCT TO BKN LOW/MED CLOUDS WITH EMBDD INT TO V INT CONVTN OVER CENTRAL AND SW BAY (.) SCT LOW/MED CLOUDS WITH EMBDD MOD TO INT CONVTN OVER NW BAY SE BAY & SOUTH ANDAMAN SEA (.) SCT LOW/MED CLOUDS WITH EMBDD WK TO MOD CONVTN OVER NE BAY N ANDAMAN SEA (.)

CLOUDS DESCRIPTION OUTSIDE INDIA:-

SAT : INSAT-3D IMG
Thermal Infrared1 Count 10.8 um
LIB FULL DISK

10-11-2022/(1500 to 1526) GMT
10-11-2022/(2030 to 2056) IST



SCT LOW/MED CLOUDS WITH EMBDD MOD TO INT CONVTN OVER SRI LANKA PALK STR GULF OF MANNAR MALDIVES TIBET CHINA S THAILAND GULF OF THAILAND CAMBODIA S VIETNAM SUMATRA STR OF MALACCA MALAYSIA BORNEO SOUTH CHINA SEA JAVA ILS & SEA CELEBES ILS & SEA PHILIPPINES SULU SEA MADAGASCAR MOZAMBIQUE CHANNEL AND OVER INDIAN OCEAN BET LAT 5.0N TO 15.0S LONG 65.0E TO 115.0E (.)

TOO 10/2140 HRS IST=

NNNN

LEGEND:-

REGION	NORTH	J&K HP PJB HARY DLH UP UTRKND
	EAST	BHR JHRKND CHTGH OR WB SKM NORTH- EAST STATES
	WEST	RAJ MP GUJ MAHA GOA
	SOUTH	TLNGN AP KRNTK KER TN LKSDP ANDAMAN & NICOBAR ILS

CLOUD DISTRIBUTION	ISOL	ISOLATED (LESS THAN 25%)
	SCT	SCATTERED (25 TO 50%)
	BKN	BROKEN (51 TO 75%)
	SLD	SOLID (GREATER THAN 75%)

CLOUDS TOP TEMPERATURE	CTT	CLOUD TOP TEMPERATURE
CONVECTION	WK CONVTN	WEAK CONVECTION (CTT GREATER THAN -25°C)
	MOD CONVTN	MODERATE CONVECTION (CTT BETWEEN -25°C TO -40°C)
	INT CONVTN	INTENSE CONVECTION (CTT BETWEEN -41°C TO -70°C)
	V INT CONVTN	VERY INTENSE CONVECTION (CTT LESS THAN -70°C)
METEOROLOGICAL SUB-DIVISIONS, STATES & UNION TERRITORIES	ARUPR	ARUNACHAL PRADESH
	BHR	BIHAR
	CHTGH	CHHATTISGARH
	COTL AP	COASTAL ANDHRA PRADESH
	COTL KRNTK	COASTAL KARNATAKA
	COTL ORS	COASTAL ORISSA
	GUJ	GUJARAT
	GWB	GANGETIC WEST BENGAL
	HARY	HARYANA
	DLH	DELHI
	HP	HIMACHAL PRADESH
	J&K	JAMMU AND KASHMIR
	JHRKND	JHARKHAND
	KER	KERALA
	KKN	KONKAN
	LKSDP	LAKSHADWEEP
	M MAHA	MADHYA MAHARASHTRA
	MAHA	MAHARASHTRA
	MANI	MANIPUR
	MEGHA	MEGHALAYA
MIZO	MIZORAM	
MP	MADHYA PRADESH	
	MRTHWD	MARATHWADA
	NAGA	NAGALAND
	N COTL AP	NORTH COASTAL ANDHRA PRADESH
	NIK	NORTH INTERIOR KARNATAKA
	ORS	ORISSA
	PJB	PUNJAB
	RAJ	RAJASTHAN
	RYLSM	RAYALASEEMA
	SAU & KUTCH	SAURASHTRA & KUTCH
	SHWB	SUB-HIMALAYAN WEST BENGAL
	SIK	SOUTH INTERIOR KARNATAKA
	SKM	SIKKIM
	TLNGN	TELANGANA
	TN	TAMIL NADU
	TRP	TRIPURA
	UP	UTTAR PRADESH

	UTRKND	UTTARAKHAND
	VID	VIDHARBHA
	SHWB	SUB HIMALAYAN WEST BENGAL
	GWB	GANGETIC WEST BENGAL
	ARSEA	ARABIAN SEA
	ILS	ISLANDS
MISCELLANEOUS	ASSW	IN ASSOCIATION WITH
	ASSTD	ASSOCIATED
	LLC	LOW LEVEL CIRCULATION
	EMBDD	EMBEDDED
	N/HOOD	NEIGHBOURHOOD
	EXT	EXTREME