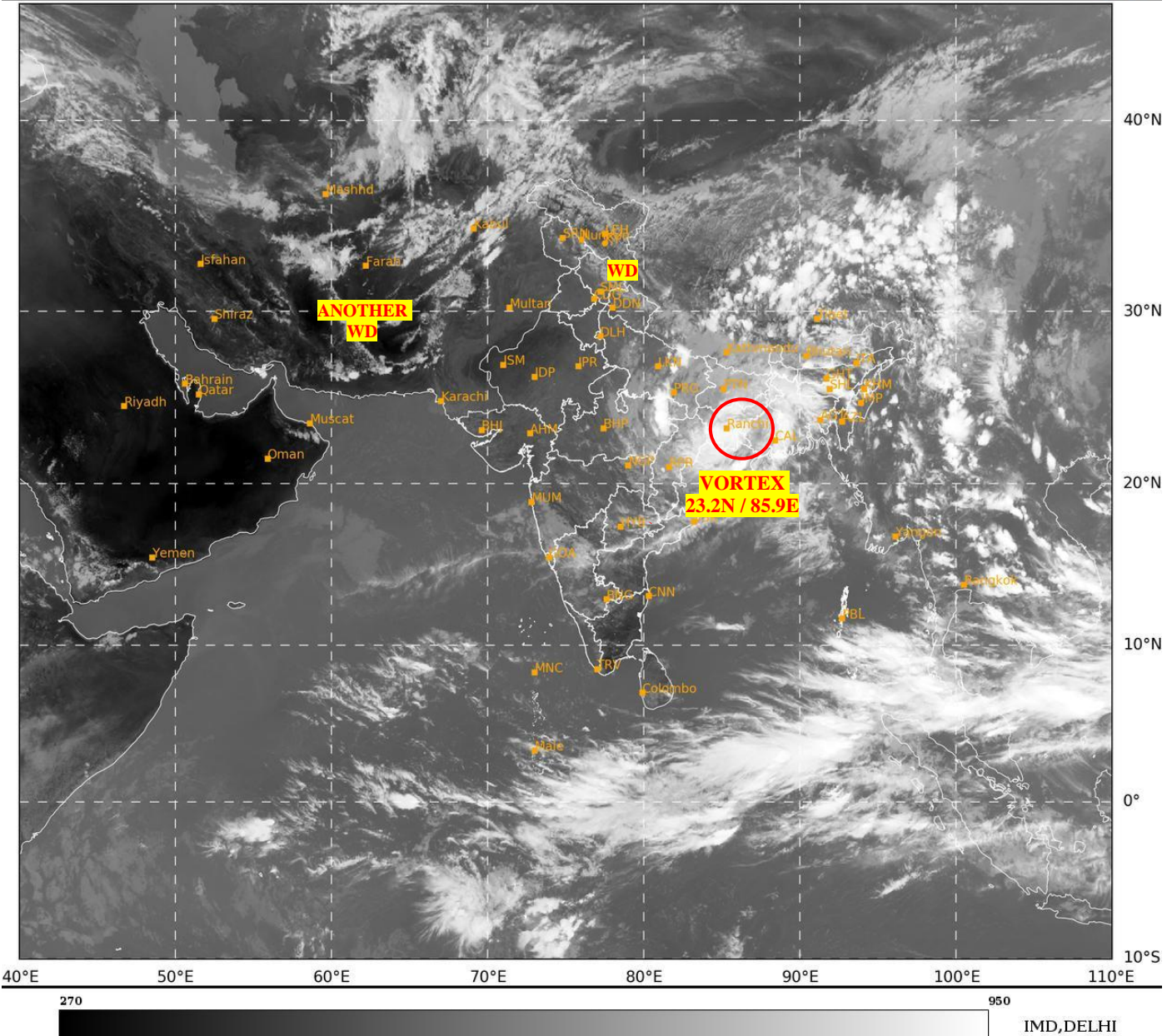




**SATELLITE BULLETIN BASED ON SATELLITE
IMAGERIES AND PRODUCTS**
16.09.2024 TIME 0900 UTC

SAT : INSAT-3DR IMG
IMG_TIR1 10.8 um
LIC Mercator

16-09-2024/(0915 to 0942) GMT
16-09-2024/(1445 to 1512) IST



TCIN50 DEMS 160900

SATELLITE BULLETIN BASED ON INSAT-3DR PIC OF 160915 UTC (.)

REGION COVERED BETWEEN LAT 50.0°N TO 35.0°S AND LONG 40.0°E TO 125.0°E (.)

SALIENT FEATURES:-

VORTEX OVER WEST GANGETIC WEST BENGAL ADJ JHARKHAND & N/HOOD:-

VORTEX OVER WEST GWB ADJ JHRKND & N/HOOD CENTERED WITHIN HALF A DEGREE OF **23.2N / 85.9E** (.) ASSTD SCT TO BKN LOW/MED CLOUDS WITH EMBDD INT TO V INT CONVTN OVER E UP E MP S BHR JHRKND N CHTGH N ORS GWB BD (MINIMUM **CTT MINUS 70-90 DEG CEL**) AND MOD TO INT CONVTN OVER S CHTGH S ORS N BHR SHWB (MINIMUM **CTT MINUS 50-70 DEG CEL**) (.)

WESTERN DISTURBANCE (WD):-

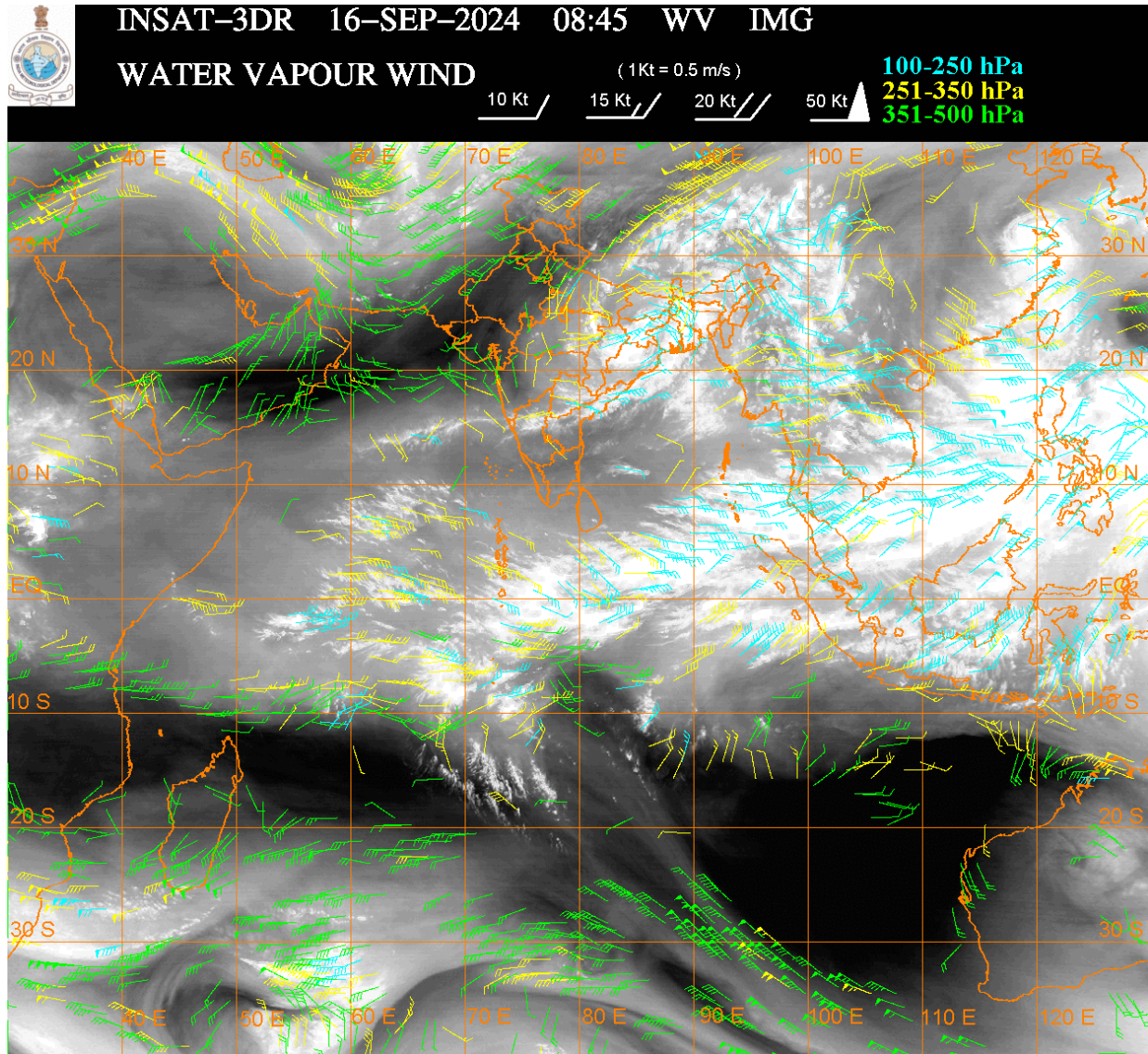
SCT MULTILAYERED CLOUDS OVER LADAKH HP UTRKND TIBET ADJ CHINA IN ASSW **WD** OVER THE AREA (.)

SCT MULTILAYERED CLOUDS OVER E IRAN AFGAN ADJ PAK & N/HOOD IN ASSW **ANOTHER WD** OVER THE AREA (.)

CONVECTIVE / THUNDERSTORM ACTIVITY:-

INTENSE TO VERY INTENSE CONVECTIVE / THUNDERSTORM ACTIVITY OBSERVED OVER E UP E MP S BHR JHRKND N CHTGH N ORS GWB NORTH-EAST STATES BD NICOBAR ILS (MINIMUM CTT MINUS 70-90 DEG CEL) (.)

MODERATE TO INTENSE CONVECTIVE / THUNDERSTORM ACTIVITY OBSERVED OVER N BHR S CHTGH S ORS SHWB TLNGN N COTL AP (MINIMUM CTT MINUS 50-70 DEG CEL) (.)



CLOUDS DESCRIPTION WITHIN INDIA:-

NORTH:-

SCT LOW/MED CLOUDS WITH EMBDD INT TO V INT CONVTN OVER E UP (.) SCT LOW/MED CLOUDS WITH EMBDD ISOL WK TO MOD CONVTN OVER LADAKH J&K HP UTRKND W UP (.) SCT LOW/MED CLOUDS OVER JPJB HARY DLH (.)

EAST:-

SCT TO BKN LOW/MED CLOUDS WITH EMBDD INT TO V INT CONVTN OVER S BHR JHRKND N CHTGH N ORS GWB NORTH-EAST STATES & BD (.) SCT LOW/MED CLOUDS WITH EMBDD MOD TO INT CONVTN OVER N BHR S CHTGH S ORS SHWB AND WK TO MOD CONVTN OVER SKM (.)

WEST:-

SCT LOW/MED CLOUDS WITH EMBDD INT TO V INT CONVTN OVER E MP (.) SCT LOW/MED CLOUDS WITH EMBDD ISOL WK TO MOD CONVTN OVER W MP MAHA GOA (.) SCT LOW/MED CLOUDS OVER RAJ GUJ (.)

SOUTH:-

SCT LOW/MED CLOUDS WITH EMBDD INT TO V INT CONVTN OVER NICOBAR ILS (.) SCT LOW/MED CLOUDS WITH EMBDD ISOL MOD TO INT CONVTN OVER TLNGN N COTL AP AND ISOL WK TO MOD CONVTN OVER KRNTK RYLSM S COTL AP ANDAMAN ILS (.) SCT LOW/MED CLOUDS OVER KER TN LKSDP ILS (.)

ARABIAN SEA:-

SCT LOW/MED CLOUDS WITH EMBDD MOD TO INT CONVTN OVER SOUTH ARSEA AND ISOL WK TO MOD CONVTN OVER CENTRAL ARSEA MALDIVES & COMORIN AREA (.)

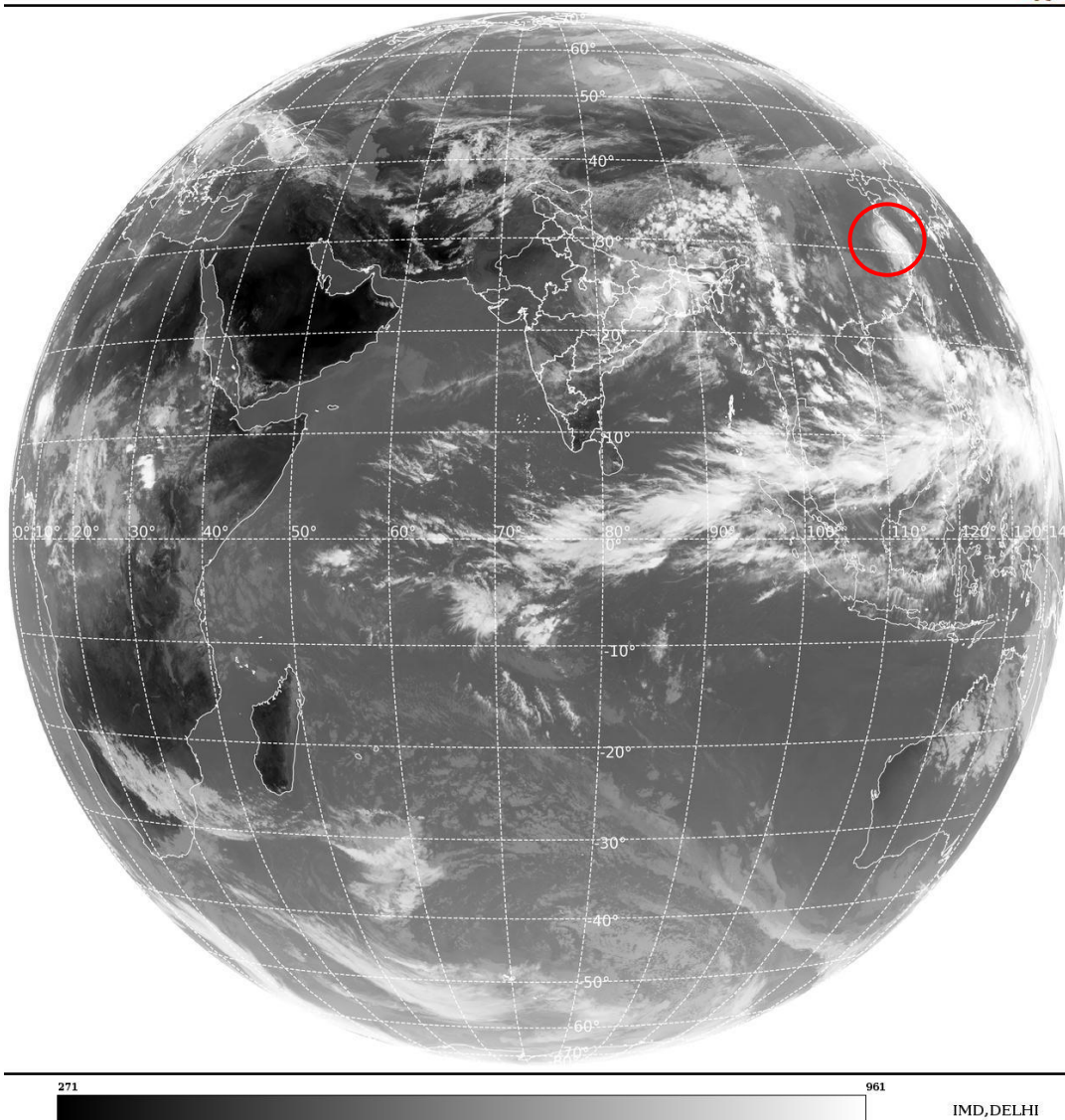
BAY OF BENGAL & ANDAMAN SEA:-

SCT TO BKN LOW/MED CLOUDS WITH EMBDD INT TO V INT CONVTN OVER SE BAY ANDAMAN SEA & TENASSERIM COAST (MINIMUM CTT MINUS 80-90 DEG CEL) (.) SCT LOW/MED CLOUDS WITH EMBDD MOD TO INT CONVTN OVER REST BAY ARAKAN COAST & GULF OF MARTABAN (.)

CLOUDS DESCRIPTION OUTSIDE INDIA:-

SAT : INSAT-3DR IMG
Thermal Infrared1 Count 10.8 um
L1B FULL DISK

16-09-2024/(0915 to 0942) GMT
16-09-2024/(1445 to 1512) IST



VORTEX (BEBINCA) OVER EAST CHINA ADJ EAST CHINA SEA:-

VORTEX (**BEBINCA**) OVER EAST CHINA ADJ EAST CHINA SEA & N/HOOD CENTERED NEAR **31.7N / 120.0E** (.) **OVERLAND** (.) ASSTD SCT TO BKN LOW/MED CLOUDS WITH EMBDD INT TO V INT CONVTN OVER AREA BET LAT 27.0N TO 34.0N AND LONG 117.0E TO 123.0E (.)

SCT LOW/MED CLOUDS WITH EMBDD MOD TO INT CONVTN OVER S SRI LANKA MALDIVES NEPAL BHUTAN TIBET CHINA YELLOW SEA EAST CHINA SEA TAIWAN MYANMAR THAILAND GULF OF THAILAND CAMBODIA LAOS VIETNAM HAINAN SUMATRA STR OF MALACCA MALAYSIA BORNEO SOUTH CHINA SEA JAVA ILS & SEA CELEBES ILS & SEA PHILIPPINES SULU SEA AND OVER INDIAN OCEAN BET LAT 5.0N TO 10.0S LONG 50.0E TO 100.0E AND BET LAT 10.0S TO 18.0S AND LONG 65.0E TO 90.0E (.)

TOO 16/1540 HRS IST=

NNNN

LEGEND:-

REGION	NORTH	J&K HP PJB HARY DLH UP UTRKND	
	EAST	BHR JHRKND CHTGH OR WB SKM NORTH- EAST STATES	
	WEST	RAJ MP GUJ MAHA GOA	
	SOUTH	TLNGN AP KRNTK KER TN LKSDP ANDAMAN & NICOBAR ILS	
CLOUD DISTRIBUTION	ISOL	ISOLATED (LESS THAN 25%)	
	SCT	SCATTERED (25 TO 50%)	
	BKN	BROKEN (51 TO 75%)	
	SLD	SOLID (GREATER THAN 75%)	
CLOUDS TOP TEMPERATURE	CTT	CLOUD TOP TEMPERATURE	
CONVECTION	WK CONVTN	WEAK CONVECTION (CTT GREATER THAN -25°C)	
	MOD CONVTN	MODERATE CONVECTION (CTT BETWEEN -25°C TO -40°C)	
	INT CONVTN	INTENSE CONVECTION (CTT BETWEEN -41°C TO -70°C)	
	V INT CONVTN	VERY INTENSE CONVECTION (CTT LESS THAN -70°C)	
METEOROLOGICAL SUB- DIVISIONS, STATES & UNION TERITORIES	ARUPR	ARUNACHAL PRADESH	
	BHR	BIHAR	
	CHTGH	CHHATTISGARH	
	COTL AP	COASTAL ANDHRA PRADESH	
	COTL KRNTK	COASTAL KARNATAKA	
	COTL ORS	COASTAL ORISSA	
	GUJ	GUJARAT	
	GWB	GANGETIC WEST BENGAL	
	HARY	HARYANA	
	DLH	DELHI	
	HP	HIMACHAL PRADESH	
	J&K	JAMMU AND KASHMIR	
	JHRKND	JHARKHAND	
	KER	KERALA	
	KKN	KONKAN	
	LKSDP	LAKSHADWEEP	
	M MAHA	MADHYA MAHARASHTRA	
	MAHA	MAHARASHTRA	
	MANI	MANIPUR	
	MEGHA	MEGHALAYA	
	MIZO	MIZORAM	
	MP	MADHYA PRADESH	
		MRTHWD	MARATHWADA
		NAGA	NAGALAND
N COTL AP		NORTH COASTAL ANDHRA PRADESH	
NIK		NORTH INTERIOR KARNATAKA	

	ORS	ORISSA
	PJB	PUNJAB
	RAJ	RAJASTHAN
	RYLSM	RAYALASEEMA
	SAU & KUTCH	SAURASHTRA & KUTCH
	SHWB	SUB-HIMALAYAN WEST BENGAL
	SIK	SOUTH INTERIOR KARNATAKA
	SKM	SIKKIM
	TLNGN	TELANGANA
	TN	TAMIL NADU
	TRP	TRIPURA
	UP	UTTAR PRADESH
	UTRKND	UTTARAKHAND
	VID	VIDHARBHA
	SHWB	SUB HIMALAYAN WEST BENGAL
	GWB	GANGETIC WEST BENGAL
	ARSEA	ARABIAN SEA
	ILS	ISLANDS
MISCELLANEOUS	ASSW	IN ASSOCIATION WITH
	ASSTD	ASSOCIATED
	LLC	LOW LEVEL CIRCULATION
	EMBDD	EMBEDDED
	N/HOOD	NEIGHBOURHOOD
	EXT	EXTREME