



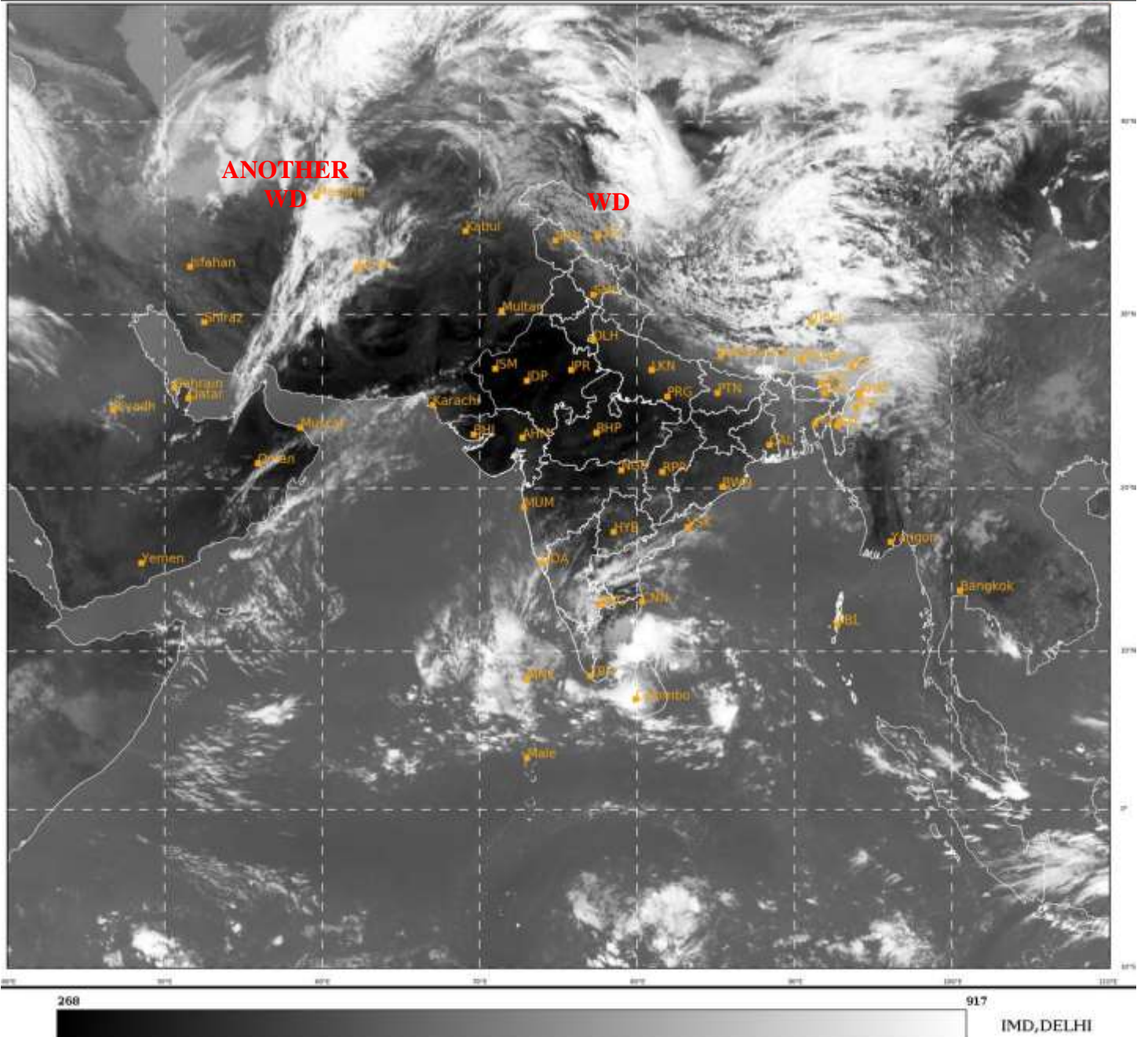
भारत मौसम विज्ञान विभाग
पृथ्वी विज्ञान मंत्रालय
India Meteorological Department
Ministry of Earth Sciences



**SATELLITE BULLETIN BASED ON SATELLITE
IMAGERIES AND PRODUCTS**
10.04.2022 TIME 0600 UTC

SAT : INSAT-3D IMG
IMG_TIR1 10.8 um
LIC Mercator

10-04-2022/(0600 to 0626) GMT
10-04-2022/(1130 to 1156) IST



TCIN50 DEMS 100600

SATELLITE BULLETIN BASED ON INSAT-3D PIC OF 100600 UTC (.)

REGION COVERED BETWEEN LAT 50.0°N TO 30.0°S AND LONG 40.0°E TO 125.0°E (.)

SALIENT FEATURES:-

CONVECTION OVER SOUTH-WEST BAY:-

SCT LOW/MED CLOUDS WITH EMBDD INTENSE TO VERY INTENSE CONVECTION OVER SW BAY PALK STR GULF OF MANNAR SRILANKA PERSISTS (.) MINIMUM CTT MINUS **73** DEG C (.)

THUNDERSTORM/ CONVECTIVE ACTIVITIES:-

THUNDERSTORM/ CONVECTIVE ACTIVITIES OBSERVED OVER N SHWB E ASSAM E ARUPR NAGA MANI (MINIMUM CTT MINUS **48** DEG C) LKSDP ILS (MINIMUM CTT MINUS **46** DEG C) (.)

WESTERN DISTURBANCE (WD):-

SCT MULTILAYERED CLOUDS OVER NE LADAKH TIBET ADJ CHINA IN ASSW **WD** OVER THE AREA (.)

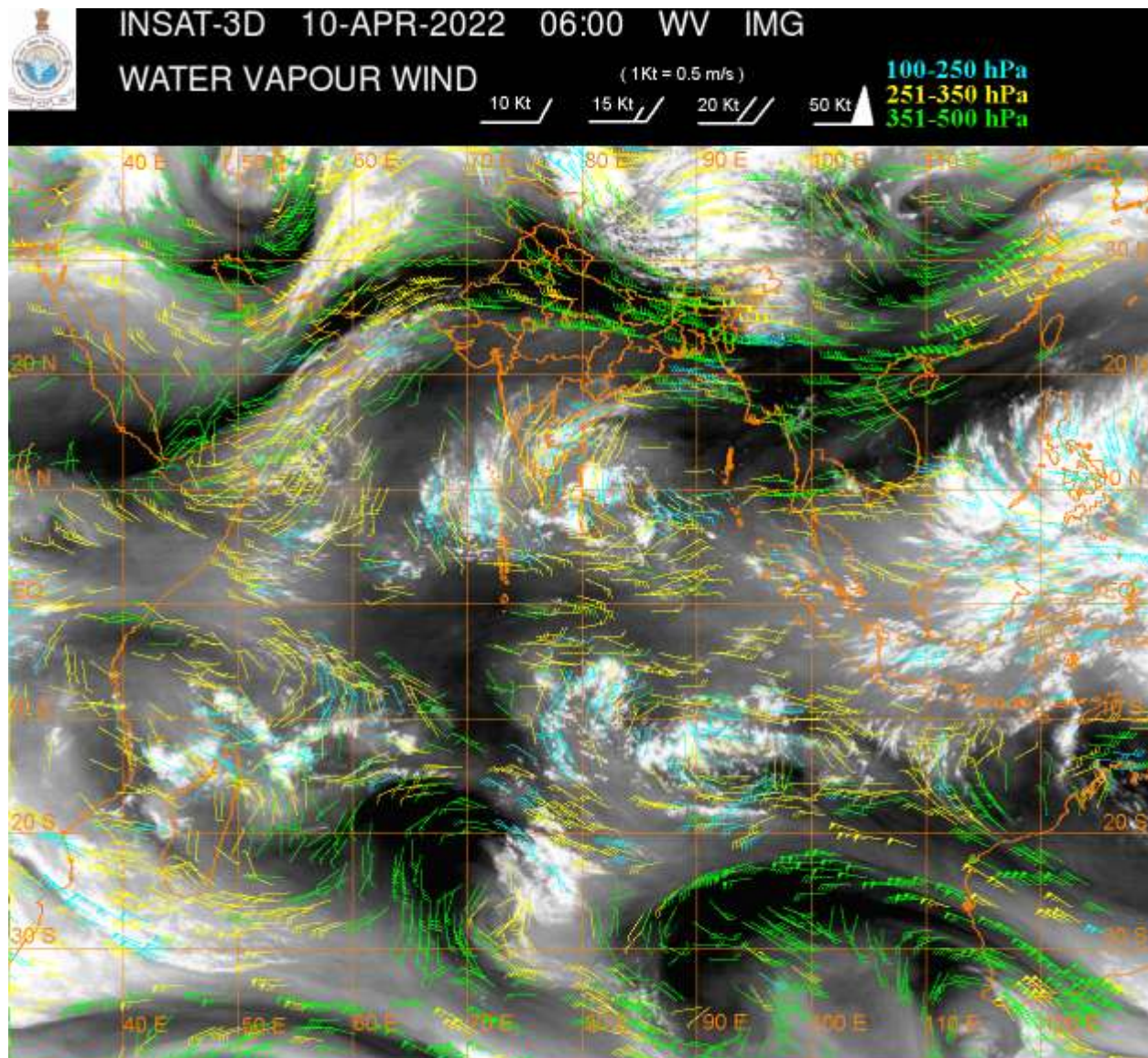
SCT MULTILAYERED CLOUDS OVER S CASPIAN SEA W IRAN AND N/HOOD IN ASSW **ANOTHER WD** OVER THE AREA (.)

PRECIPITATION NOWCASTING:-

(BASED ON SCOPE NOWCASTING TOOL AT 0300 UTC AT A LEAD TIME OF 03 HRS (MM/HR) :-

RAINFALL UPTO 10-15 MM OBSERVED OVER LKSDP ILS (.)

RAINFALL UPTO 0.5-5 MM OBSERVED OVER N ASSAM ARUPR S NAGA MANI SIK CENTAL COTL AP EXT N KER S COTL TN (.)



CLOUDS DESCRIPTION WITHIN INDIA:-

NORTH:-

SCT LOW/MED CLOUDS WITH EMBDD MOD TO INT CONVTN OVER NE LADAKH AND ISOL WK CONVTN OVER REST LADAKH (.) SCT LOW/MED CLOUDS OVER N HP N UTRKND (.)

EAST:-

SCT LOW/MED CLOUDS WITH EMBDD MOD TO INT CONVTN OVER N SHWB ARUPR NE ASSAM (.) SCT LOW/MED CLOUDS WITH EMBDD WK CONVTN OVER SKM REST ASSSAM NAGA MANI N MIZO (.) ISOL TO SCT LOW/MED CLOUDS OVER BHR N JHRKND CHTGH S ORS N GWB SOUTH SHWB (.)

WEST:-

SCT LOW/MED CLOUDS OVER E MP MAHA & GOA (.)

SOUTH:-

SCT LOW/MED CLOUDS WITH EMBDD MOD TO INT CONVTN OVER RYLSM SIK S COTL AP S COTL TN LKSDP ILS AND WK CONVTN OVER NIK N COTL AP N KER REST TN NICOBAR ILS (.) SCT LOW/MED CLOUDS OVER TLNGN S KER (.)

ARABIAN SEA:-

**SCT LOW/MED CLOUDS WITH EMBDD MOD TO INT CONVTN OVER SE ARSEA COMORIN AREA
(.) SCT LOW/MED CLOUDS WITH EMBDD WK TO MOD CONVTN OVER W ARSEA (.)**

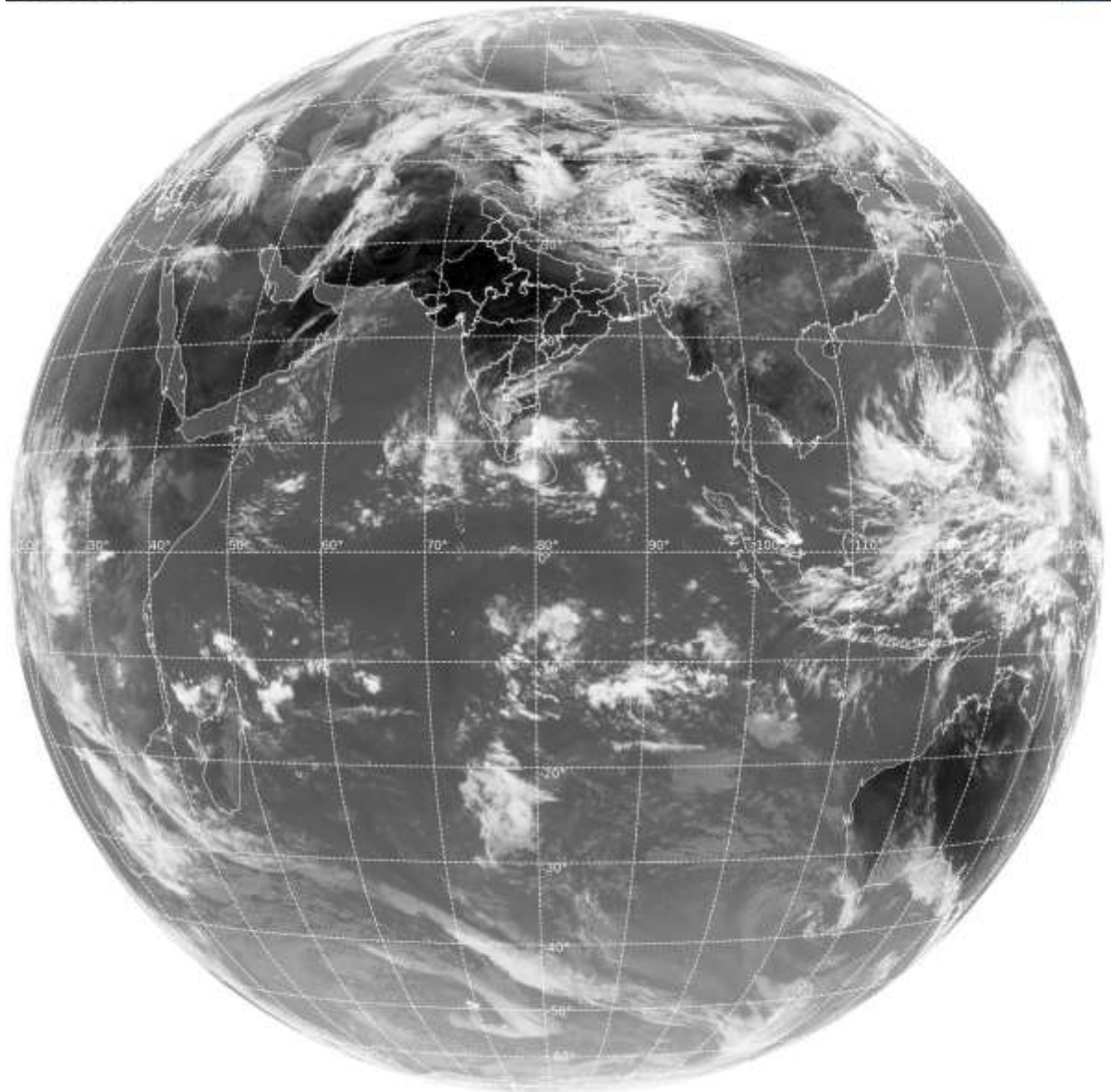
BAY OF BENGAL & ANDAMAN SEA:-

**SCT LOW/MED CLOUDS WITH EMBDD INT TO V INT CONVTN OVER SW BAY PALK STR GULF
OF MANNAR ADJ SRILANKA (.) SCT LOW/MED CLOUDS WITH EMBDD WK TO MOD CONVTN
OVER WC BAY OFF AP COAST (.)**

CLOUDS DESCRIPTION OUTSIDE INDIA:-

SAT : INSAT-3D IMG
Thermal Infrared1 Count 10.8 um
LIB FULL DISK

10-04-2022/(0600 to 0626) GMT
10-04-2022/(1130 to 1156) IST



255

973

IMD,DELHI

**SCT LOW/MED CLOUDS WITH EMBDD MOD TO INT CONVTN OVER SRILANKA PALK STR GULF
OF MANNAR N MALDIVES TIBET CHINA SUMATRA STR OF MALACCA MALAYSIA BORNEO S
CHINA SEA JAVA ILS & SEA CELEBES ILS & SEA PHILIPPINES SULU SEA N MADAGASCAR
MOZAMBIQUE CHANNEL AND OVER INDIAN OCEAN BET LAT 5.0S TO 20.0S LONG 50.0E TO
112.0E AND BET LAT 20.0S TO 30.0S LONG 70.0E TO 80.0E (.)**

TOO 10/1230 HRS IST=

NNNN

LEGEND:-

REGION	NORTH	J&K HP PJB HARY DLH UP UTRKND
	EAST	BHR JHRKND CHTGH OR WB SKM NORTH- EAST STATES
	WEST	RAJ MP GUJ MAHA GOA
	SOUTH	TLNGN AP KRNTK KER TN LKSDP ANDAMAN & NICOBAR ILS

CLOUD DISTRIBUTION	ISOL	ISOLATED (LESS THAN 25%)
	SCT	SCATTERED (25 TO 50%)
	BKN	BROKEN (51 TO 75%)
	SLD	SOLID (GREATER THAN 75%)
CLOUDS TOP TEMPERATURE	CTT	CLOUD TOP TEMPERATURE
CONVECTION	WK CONVTN	WEAK CONVECTION (CTT GREATER THAN -25°C)
	MOD CONVTN	MODERATE CONVECTION (CTT BETWEEN -25°C TO -40°C)
	INT CONVTN	INTENSE CONVECTION (CTT BETWEEN -41°C TO -70°C)
	V INT CONVTN	VERY INTENSE CONVECTION (CTT LESS THAN -70°C)
METEOROLOGICAL SUB-DIVISIONS, STATES & UNION TERRITORIES	ARUPR	ARUNACHAL PRADESH
	BHR	BIHAR
	CHTGH	CHHATTISGARH
	COTL AP	COASTAL ANDHRA PRADESH
	COTL KRNTK	COASTAL KARNATAKA
	COTL ORS	COASTAL ORISSA
	GUJ	GUJARAT
	GWB	GANGETIC WEST BENGAL
	HARY	HARYANA
	DLH	DELHI
	HP	HIMACHAL PRADESH
	J&K	JAMMU AND KASHMIR
	JHRKND	JHARKHAND
	KER	KERALA
	KKN	KONKAN
	LKSDP	LAKSHADWEEP
	M MAHA	MADHYA MAHARASHTRA
	MAHA	MAHARASHTRA
	MANI	MANIPUR
	MEGHA	MEGHALAYA
	MIZO	MIZORAM
	MP	MADHYA PRADESH
	MRTHWD	MARATHWADA
	NAGA	NAGALAND
	N COTL AP	NORTH COASTAL ANDHRA PRADESH
	NIK	NORTH INTERIOR KARNATAKA
	ORS	ORISSA

	PJB	PUNJAB
	RAJ	RAJASTHAN
	RYLSM	RAYALASEEMA
	SAU & KUTCH	SAURASHTRA & KUTCH
	SHWB	SUB-HIMALAYAN WEST BENGAL
	SIK	SOUTH INTERIOR KARNATAKA
	SKM	SIKKIM
	TLNGN	TELANGANA
	TN	TAMIL NADU
	TRP	TRIPURA
	UP	UTTAR PRADESH
	UTRKN	UTTARAKHAND
	VID	VIDHARBHA
	SHWB	SUB HIMALAYAN WEST BENGAL
	GWB	GANGETIC WEST BENGAL
	ARSEA	ARABIAN SEA
	ILS	ISLANDS
MISCELLANEOUS	ASSW	IN ASSOCIATION WITH
	ASSTD	ASSOCIATED
	LLC	LOW LEVEL CIRCULATION
	EMBDD	EMBEDDED
	N/HOOD	NEIGHBOURHOOD
	EXT	EXTREME