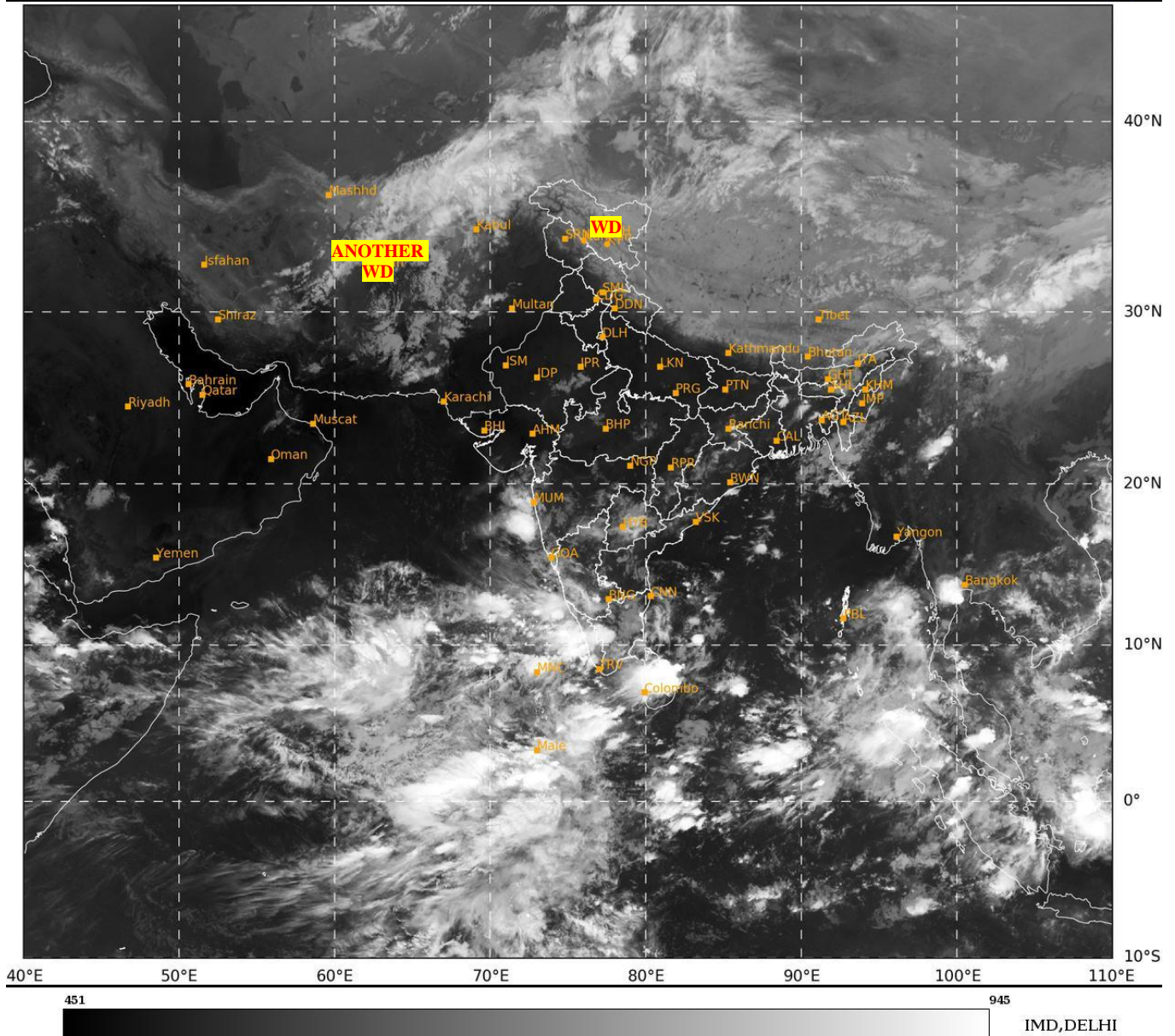




**SATELLITE BULLETIN BASED ON SATELLITE
IMAGERIES AND PRODUCTS**
06.10.2024 TIME 1800 UTC

SAT : INSAT-3DR IMG
IMG_TIR1 10.8 um
LIC Mercator

06-10-2024/(1645 to 1712) GMT
06-10-2024/(2215 to 2242) IST



TCIN50 DEMS 061800

SATELLITE BULLETIN BASED ON INSAT-3DR PIC OF 061645 UTC (.)

REGION COVERED BETWEEN LAT 50.0°N TO 35.0°S AND LONG 40.0°E TO 125.0°E (.)

SALIENT FEATURES:-

WESTERN DISTURBANCE (WD):-

SCT MULTILAYERED CLOUDS OVER LADAKH N HP N UTRKND TIBET ADJ CHINA IN ASSW
WD OVER THE AREA (.)

SCT MULTILAYERED CLOUDS OVER E IRAN AFGAN ADJ PAK AND N/HOOD IN ASSW
ANOTHER WD OVER THE AREA (.)

CONVECTIVE / THUNDERSTORM ACTIVITY:-

MODERATE TO INTENSE CONVECTIVE / THUNDERSTORM ACTIVITY OBSERVED OVER S
TLNGN S RYLSM KRNTK KER NW TN LKSDP ILS AREA (MINIMUM **CTT MINUS 50-70 DEG CEL**)
(.)



INSAT-3DR 06-OCT-2024 16:45 WV IMG

WATER VAPOUR WIND

(1Kt = 0.5 m/s)

10 Kt

15 Kt

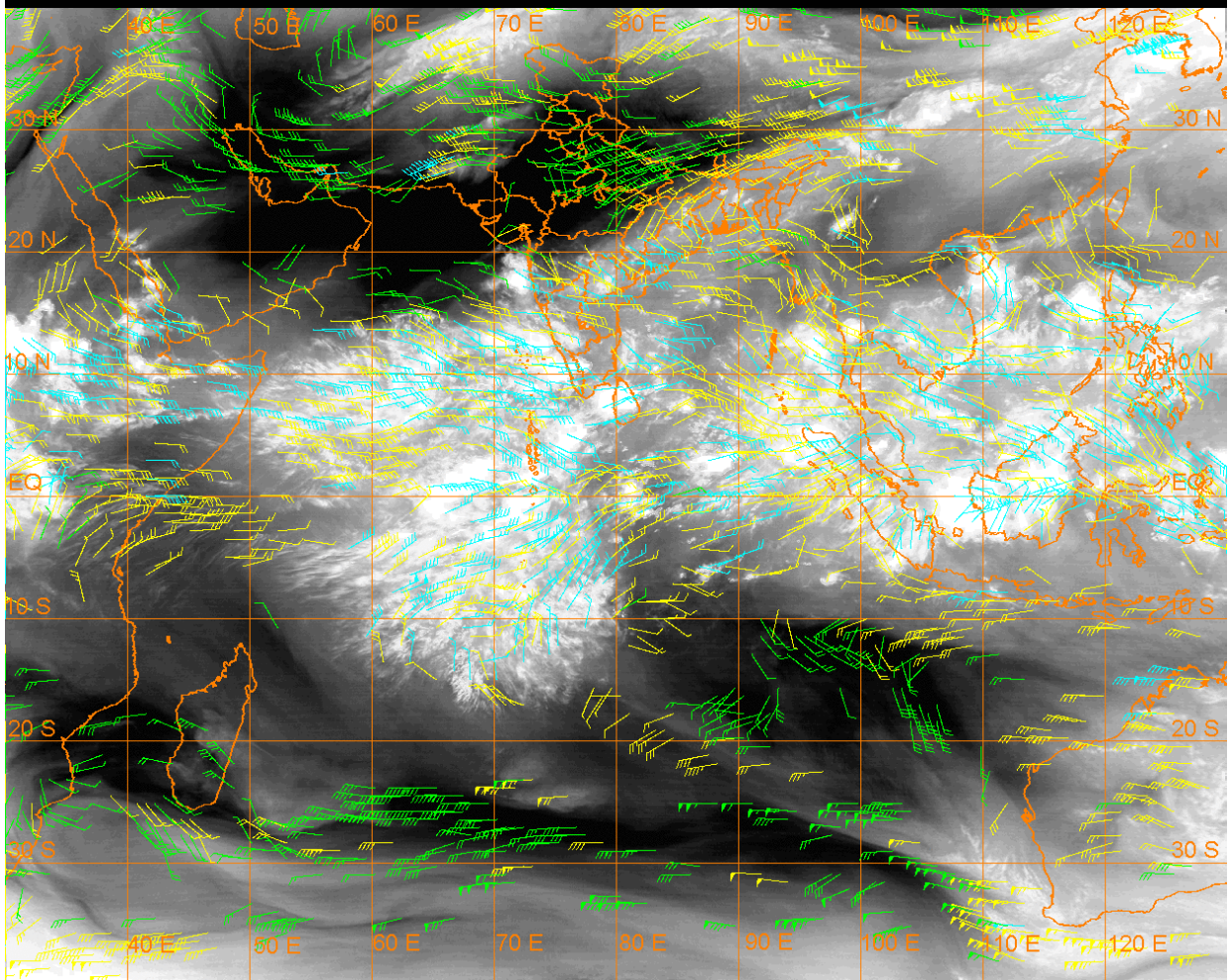
20 Kt

50 Kt

100-250 hPa

251-350 hPa

351-500 hPa



CLOUDS DESCRIPTION WITHIN INDIA:-

NORTH:-

SCT LOW/MED CLOUDS WITH EMBDD ISOL WK TO MOD CONVTN OVER LADAKH N HP N UTRKND (.) ISOL LOW/MED CLOUDS OVER J&K S HP S UTRKND UP (.)

EAST:-

SCT LOW/MED CLOUDS WITH EMBDD WK TO MOD CONVTN OVER S JHRKND S CHTGH ORS SKM REST NE STATES (.) SCT LOW/MED CLOUDS OVER BHR N JHRKND N CHTGH GWB SHWB (.)

WEST:-

SCT LOW/MED CLOUDS WITH EMBDD ISOL WK TO MOD CONVTN OVER E RAJ CENTRAL MP S GUJ MAHA & GOA (.) SCT LOW/MED CLOUDS OVER W RAJ REST MP N GUJ (.)

SOUTH:-

SCT LOW/MED CLOUDS WITH EMBDD MOD TO INT CONVTN OVER S TLNGN S RYLSM KRNTK KER NW TN LKSDP ILS AREA (.) SCT LOW/MED CLOUDS WITH EMBDD WK TO MOD CONVTN OVER N TLNGN RYLSM COTL AP REST TN ANDAMAN & NICOBAR ILS (.)

ARABIAN SEA:-

SCT LOW/MED CLOUDS WITH EMBDD INT TO V INT CONVTN OVER EC ARSEA OFF MAHA COAST SOUTH ARSEA LKSDP ILS AREA MALDIVES & COMORIN AREA (MINIMUM **CTT MINUS 70-90 DEG CEL**) (.)

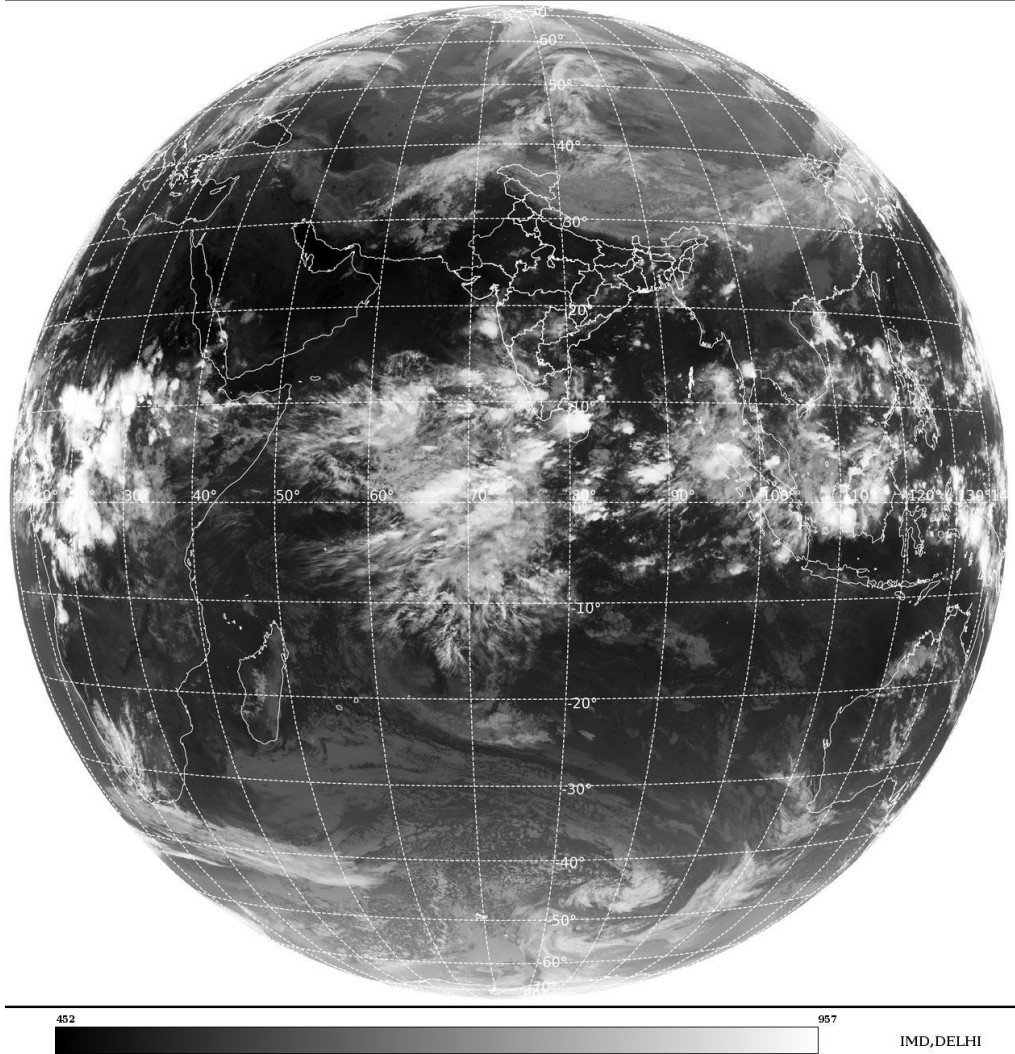
BAY OF BENGAL & ANDAMAN SEA:-

SCT LOW/MED CLOUDS WITH EMBDD INT TO V INT CONVTN OVER SW BAY (MINIMUM **CTT MINUS 70-90 DEG CEL**) (.) SCT LOW/MED CLOUDS WITH EMBDD MOD TO INT CONVTN OVER CENTRAL & SE BAY ANDAMAN SEA (.) SCT LOW/MED CLOUDS WITH EMBDD WK TO MOD CONVTN OVER NORTH BAY (.)

CLOUDS DESCRIPTION OUTSIDE INDIA:-

SAT : INSAT-3DR IMG
Thermal Infrared1 Count 10.8 um
L1B FULL DISK

06-10-2024/(1645 to 1712) GMT
06-10-2024/(2215 to 2242) IST



SCT LOW/MED CLOUDS WITH EMBDD MOD TO INT CONV'TN OVER SRI LANKA PALK STR GULF OF MANNAR MALDIVES W PAK TIBET CHINA YELLOW SEA TAIWAN MYANMAR THAILAND GULF OF THAILAND CAMBODIA S LAOS S VIETNAM HAINAN SUMATRA STR OF MALACCA MALAYSIA BORNEO SOUTH CHINA SEA JAVA ILS & SEA CELEBES ILS & SEA PHILIPPINES SULU SEA MADAGASCAR AND OVER INDIAN OCEAN BET LAT 5.0N TO 16.0S LONG 50.0E TO 105.0E (.)

TOO 06/2325 HRS IST=

NNNN

LEGEND:-

REGION	NORTH	J&K HP PJB HARY DLH UP UTRKND
	EAST	BHR JHRKND CHTGH ORS WB SKM NORTH- EAST STATES
	WEST	RAJ MP GUJ MAHA GOA
	SOUTH	TLNGN AP KRNTK KER TN LKSDP ANDAMAN & NICOBAR ILS
CLOUD DISTRIBUTION	ISOL	ISOLATED (LESS THAN 25%)
	SCT	SCATTERED (25 TO 50%)
	BKN	BROKEN (51 TO 75%)
	SLD	SOLID (GREATER THAN 75%)

CLOUDS TOP TEMPERATURE	CTT	CLOUD TOP TEMPERATURE	
CONVECTION	WK CONV TN	WEAK CONVECTION (CTT GREATER THAN -25°C)	
	MOD CONV TN	MODERATE CONVECTION (CTT BETWEEN -25°C TO -40°C)	
	INT CONV TN	INTENSE CONVECTION (CTT BETWEEN -41°C TO -70°C)	
	V INT CONV TN	VERY INTENSE CONVECTION (CTT LESS THAN -70°C)	
METEOROLOGICAL SUB- DIVISIONS, STATES & UNION TERRITORIES	ARUPR	ARUNACHAL PRADESH	
	BHR	BIHAR	
	CHTGH	CHHATTISGARH	
	COTL AP	COASTAL ANDHRA PRADESH	
	COTL KRNTK	COASTAL KARNATAKA	
	COTL ORS	COASTAL ORISSA	
	GUJ	GUJARAT	
	GWB	GANGETIC WEST BENGAL	
	HARY	HARYANA	
	DLH	DELHI	
	HP	HIMACHAL PRADESH	
	J&K	JAMMU AND KASHMIR	
	JHRKND	JHARKHAND	
	KER	KERALA	
	KKN	KONKAN	
	LKSDP	LAKSHADWEEP	
	M MAHA	MADHYA MAHARASHTRA	
	MAHA	MAHARASHTRA	
	MANI	MANIPUR	
	MEGHA	MEGHALAYA	
	MIZO	MIZORAM	
	MP	MADHYA PRADESH	
		MRTHWD	MARATHWADA
		NAGA	NAGALAND
		N COTL AP	NORTH COASTAL ANDHRA PRADESH
		NIK	NORTH INTERIOR KARNATAKA
ORS		ORISSA	
PJB		PUNJAB	
RAJ		RAJASTHAN	
RYLSM		RAYALASEEMA	
SAU & KUTCH		SAURASHTRA & KUTCH	
SHWB		SUB-HIMALAYAN WEST BENGAL	
SIK		SOUTH INTERIOR KARNATAKA	
SKM		SIKKIM	
TLNGN		TELANGANA	
TN		TAMIL NADU	
TRP		TRIPURA	
UP		UTTAR PRADESH	

	UTRKND	UTTARAKHAND
	VID	VIDHARBHA
	SHWB	SUB HIMALAYAN WEST BENGAL
	GWB	GANGETIC WEST BENGAL
	ARSEA	ARABIAN SEA
	ILS	ISLANDS
MISCELLANEOUS	ASSW	IN ASSOCIATION WITH
	ASSTD	ASSOCIATED
	LLC	LOW LEVEL CIRCULATION
	EMBDD	EMBEDDED
	N/HOOD	NEIGHBOURHOOD
	EXT	EXTREME