



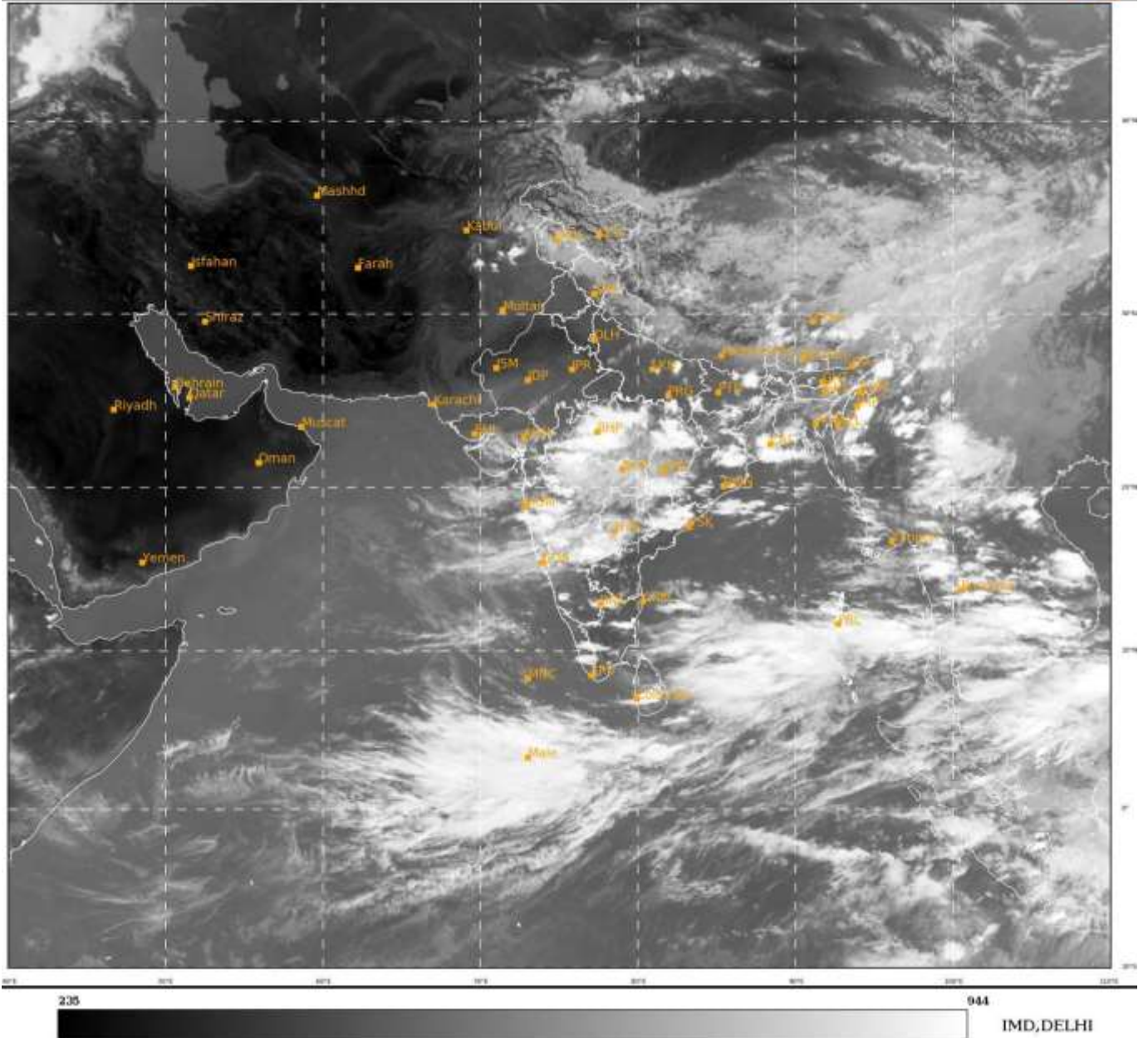
भारत मौसम विज्ञान विभाग
पृथ्वी विज्ञान मंत्रालय
India Meteorological Department
Ministry of Earth Sciences



**SATELLITE BULLETIN BASED ON SATELLITE
IMAGERIES AND PRODUCTS**
04.09.2022 TIME 0900 UTC

SAT : INSAT-3D IMG
IMG_TIR1 10.8 um
LIC Mercator

04-09-2022/(0900 to 0926) GMT
04-09-2022/(1430 to 1456) IST



TCIN50 DEMS 040900

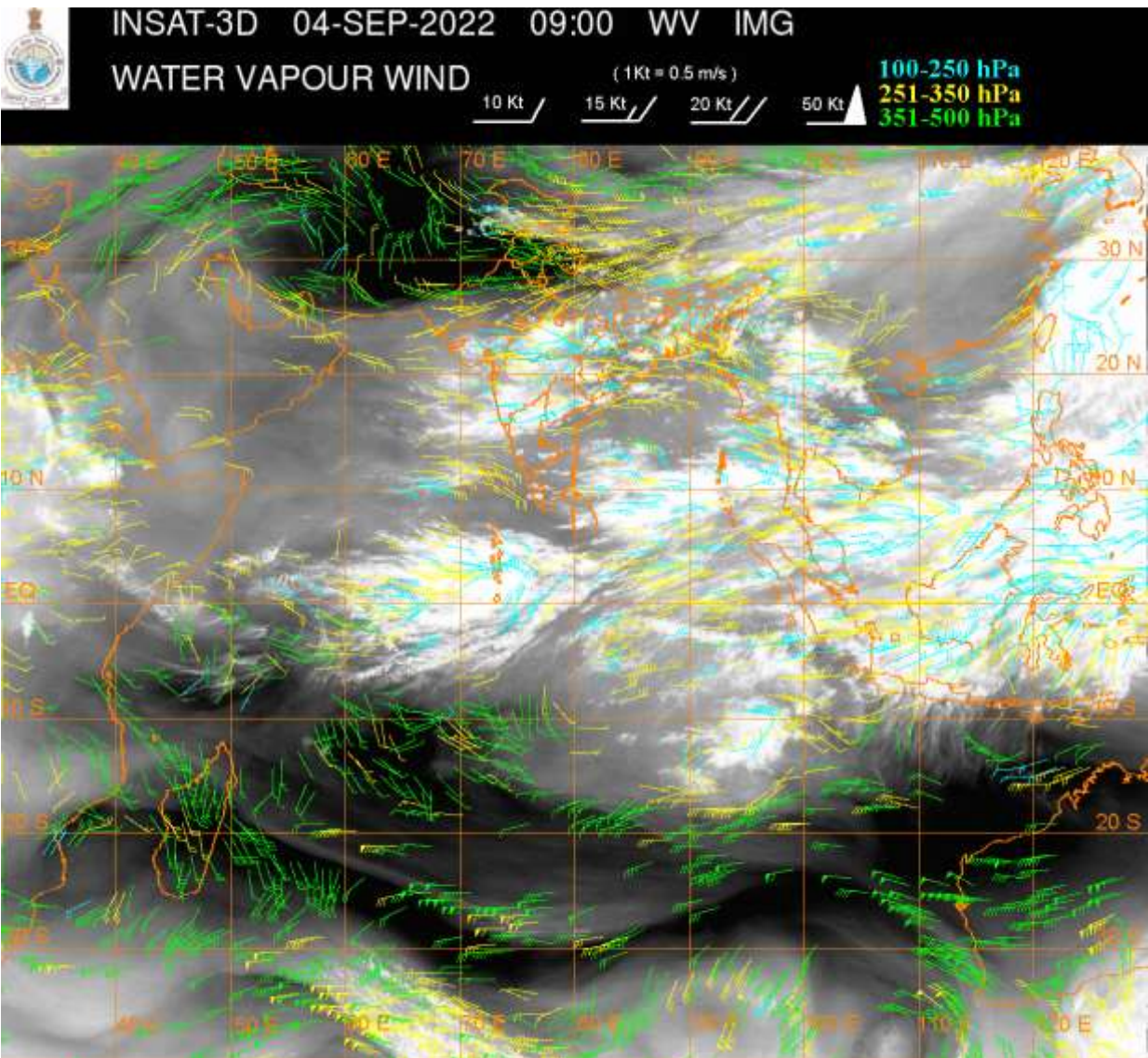
SATELLITE BULLETIN BASED ON INSAT-3D PIC OF 040900 UTC (.)

REGION COVERED BETWEEN LAT 50.0°N TO 30.0°S AND LONG 40.0°E TO 125.0°E (.)

SALIENT FEATURES:-

INTENSE CONVECTIVE CLOUDS :-

**INTENSE CONVECTIVE CLOUDS OBSERVED OVER MP MAHA CHTGH ORS N BHR NE
JHRKND TLNGN NIK S KER N COTL AP E MEGHA ASSAM ARUPR NAGA MANI TRP &
NICOBAR ILS (.)**



CLOUDS DESCRIPTION WITHIN INDIA:-

NORTH:-

SCT TO BKN LOW/MED CLOUDS WITH EMBDD MOD TO INT CONVTN OVER J&K (.) SCT LOW/MED CLOUDS WITH EMBDD WK CONVTN OVER LADAKH HP N UTRKND (.) SCT LOW/MED CLOUDS OVER S UTRKND N PJB UP (.)

EAST:-

SCT TO BKN LOW/MED CLOUDS WITH EMBDD MOD TO INT CONVTN OVER E UP N BHR NE JHRKND N & S CHTGH N & S ORS SE GWB E MEGHA E ASSAM ARUPR NAGA MANI & BD (.) SCT LOW/MED CLOUDS WITH EMBDD WK TO MOD CONVTN OVER S BHR REST JHRKND REST GWB SHWB SKM W ASSAM W MEGHA MIZO (.) SCT LOW/MED CLOUDS OVER S JHRKND (.)

WEST:-

SCT TO BKN LOW/MED CLOUDS WITH EMBDD INT TO V INT CONVTN OVER MP M MAHA MRTHWD (MINIMUM CTT MINUS 77 DEG CEL) (.) SCT TO BKN LOW/MED CLOUDS WITH EMBDD MOD TO INT CONVTN OVER GUJ REST MAHA (.) SCT LOW/MED CLOUDS WITH ISOL WK TO MOD CONVTN OVER SE RAJ GOA (.) SCT LOW/MED CLOUDS OVER SW RAJ (.)

SOUTH:-

SCT LOW/MED CLOUDS WITH EMBDD MOD TO INT CONVTN OVER N COTL AP NIK TLNGN LKSDP S ANDAMAN & NICOB ILS (.) SCT LOW/MED CLOUDS WITH EMBDD ISOL WK TO MOD CONVTN OVER N ANDAMAN ILS (.) ISOL LOW/MED CLOUDS OVER REST KRNTK RYLSM COTL AP KER TN (.)

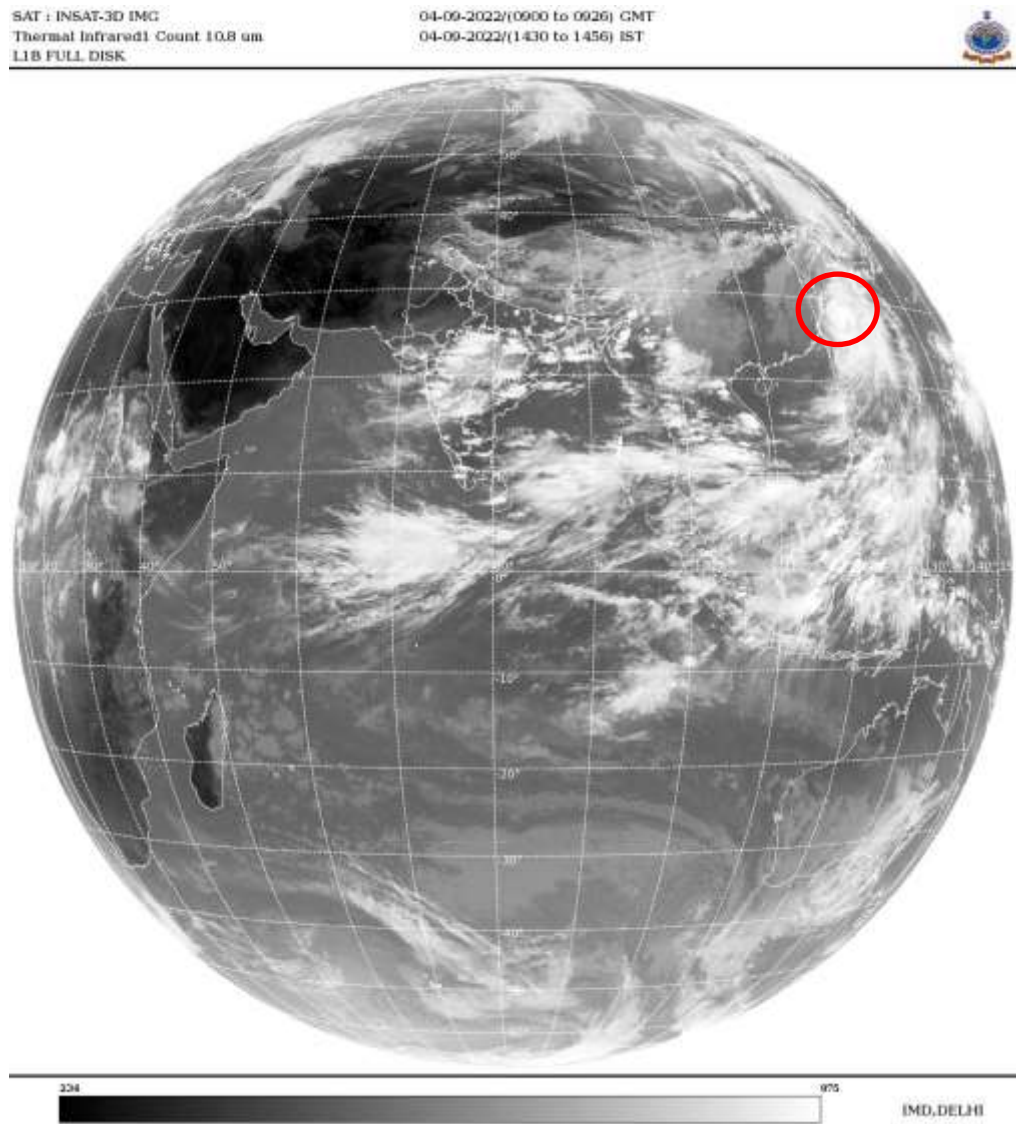
ARABIAN SEA:-

SCT LOW/MED CLOUDS WITH EMBDD MOD TO INT CONVTN OVER EC ARSEA OFF MAHA COAST SE ARSEA LKSDP ILS AREA (.)

BAY OF BENGAL & ANDAMAN SEA:-

SCT TO BKN LOW/MED CLOUDS WITH EMBDD INT TO V INT CONVTN OVER SOUTH BAY ANDAMAN SEA (.) SCT LOW/MED CLOUDS WITH EMBDD MOD TO INT CONVTN OVER NORTH BAY GULF OF MARTABAN AND TENASSERIM COAST (.)

CLOUDS DESCRIPTION OUTSIDE INDIA:-



VORTEX (HINNAMNOR) OVER EAST CHINA SEA & N/HOOD:-

VORTEX (**HINNAMNOR**) OVER E CHINA SEA & N/HOOD CENTERED NEAR **27.4N / 124.5E** (.) INTENSITY **T5.5/5.5** (.) ASSTD BKN LOW/MED CLOUDS WITH EMBDD MOD TO INT CONVTN OVER AREA BET LAT 21.0N TO 31.0N LONG 121.0E TO 130.0E (.)

SCT LOW/MED CLOUDS WITH EMBDD MOD TO INT CONVTN OVER MALDIVES NEPAL BHUTAN TIBET CHINA YELLOW SEA E CHINA SEA TAIWAN MYANMAR THAILAND GULF OF THAILAND CAMBODIA LAOS VIETNAM SUMATRA STR OF MALACCA MALAYSIA BORNEO SOUTH CHINA SEA JAVA ILS & SEA CELEBES ILS & SEA PHILIPPINES SULU SEA AND OVER INDIAN OCEAN BET LAT 5.0N TO 15.0S LONG 60.0E TO 102.0E (.)

TOO 04/1525 HRS IST=

NNNN

LEGEND:-

REGION	NORTH	J&K HP PJB HARY DLH UP UTRKND
	EAST	BHR JHRKND CHTGH OR WB SKM NORTH- EAST STATES
	WEST	RAJ MP GUJ MAHA GOA
	SOUTH	TLNGN AP KRNTK KER TN LKSDP ANDAMAN & NICOBAR ILS

CLOUD DISTRIBUTION	ISOL	ISOLATED (LESS THAN 25%)
	SCT	SCATTERED (25 TO 50%)
	BKN	BROKEN (51 TO 75%)
	SLD	SOLID (GREATER THAN 75%)
CLOUDS TOP TEMPERATURE	CTT	CLOUD TOP TEMPERATURE
CONVECTION	WK CONVTN	WEAK CONVECTION (CTT GREATER THAN -25°C)
	MOD CONVTN	MODERATE CONVECTION (CTT BETWEEN -25°C TO -40°C)
	INT CONVTN	INTENSE CONVECTION (CTT BETWEEN -41°C TO -70°C)
	V INT CONVTN	VERY INTENSE CONVECTION (CTT LESS THAN -70°C)
METEOROLOGICAL SUB-DIVISIONS, STATES & UNION TERRITORIES	ARUPR	ARUNACHAL PRADESH
	BHR	BIHAR
	CHTGH	CHHATTISGARH
	COTL AP	COASTAL ANDHRA PRADESH
	COTL KRNTK	COASTAL KARNATAKA
	COTL ORS	COASTAL ORISSA
	GUJ	GUJARAT
	GWB	GANGETIC WEST BENGAL
	HARY	HARYANA
	DLH	DELHI
	HP	HIMACHAL PRADESH
	J&K	JAMMU AND KASHMIR
	JHRKND	JHARKHAND
	KER	KERALA
	KKN	KONKAN
	LKSDP	LAKSHADWEEP
	M MAHA	MADHYA MAHARASHTRA
	MAHA	MAHARASHTRA
	MANI	MANIPUR
	MEGHA	MEGHALAYA
	MIZO	MIZORAM
	MP	MADHYA PRADESH
	MRTHWD	MARATHWADA
	NAGA	NAGALAND

	N COTL AP	NORTH COASTAL ANDHRA PRADESH
	NIK	NORTH INTERIOR KARNATAKA
	ORS	ORISSA
	PJB	PUNJAB
	RAJ	RAJASTHAN
	RYLSM	RAYALASEEMA
	SAU & KUTCH	SAURASHTRA & KUTCH
	SHWB	SUB-HIMALAYAN WEST BENGAL
	SIK	SOUTH INTERIOR KARNATAKA
	SKM	SIKKIM
	TLNGN	TELANGANA
	TN	TAMIL NADU
	TRP	TRIPURA
	UP	UTTAR PRADESH
	UTRKN	UTTARAKHAND
	VID	VIDHARBHA
	SHWB	SUB HIMALAYAN WEST BENGAL
	GWB	GANGETIC WEST BENGAL
	ARSEA	ARABIAN SEA
	ILS	ISLANDS
MISCELLANEOUS	ASSW	IN ASSOCIATION WITH
	ASSTD	ASSOCIATED
	LLC	LOW LEVEL CIRCULATION
	EMBDD	EMBEDDED
	N/HOOD	NEIGHBOURHOOD
	EXT	EXTREME