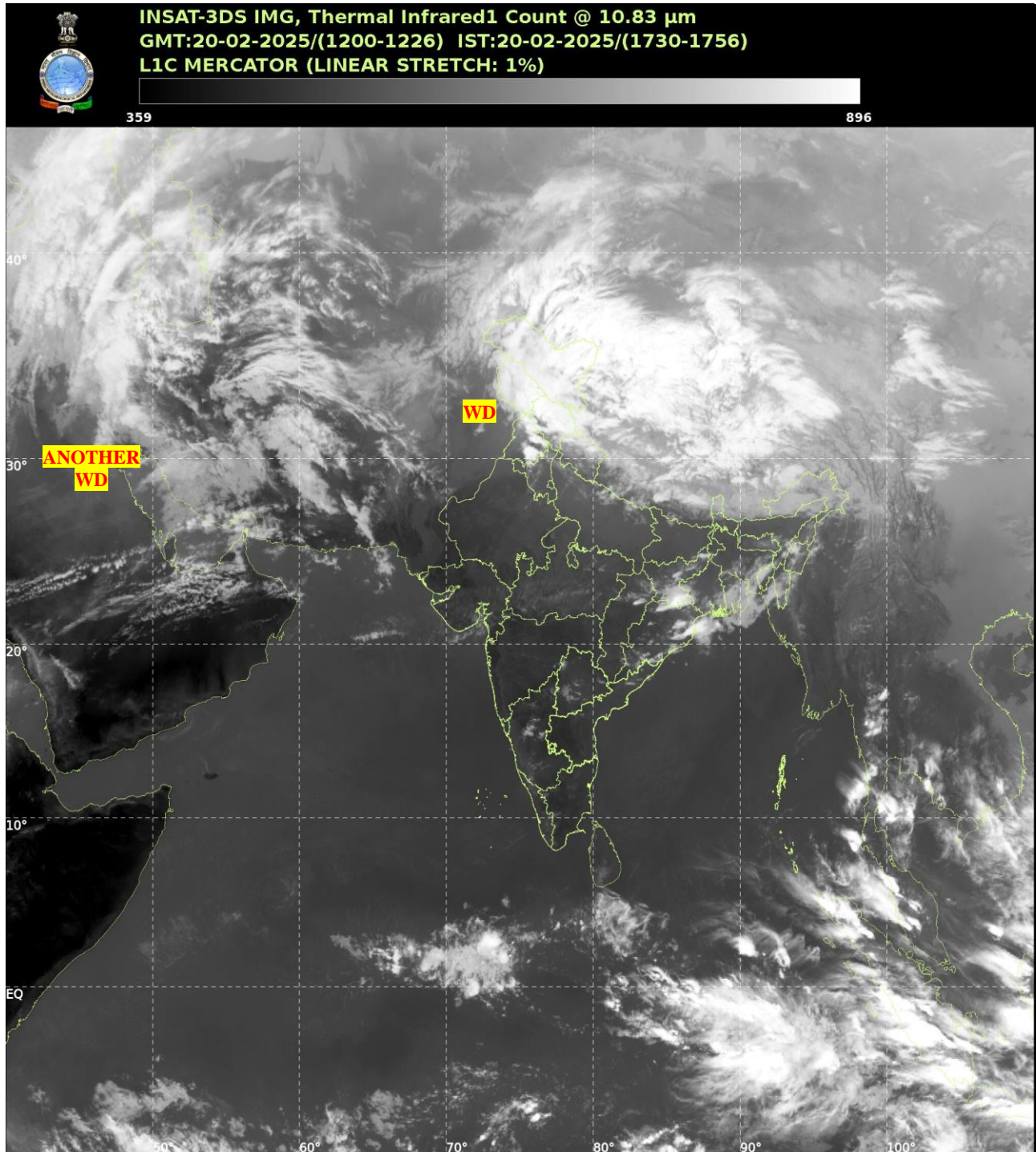




भारत मौसम विज्ञान विभाग  
पृथ्वी विज्ञान मंत्रालय  
India Meteorological Department  
Ministry of Earth Sciences



**SATELLITE BULLETIN BASED ON SATELLITE  
IMAGERIES AND PRODUCTS**  
**20.02.2025 TIME 1200 UTC**



TCIN50 DEMS 201200

SATELLITE BULLETIN BASED ON INSAT-3DS PIC OF 201200 UTC (.)

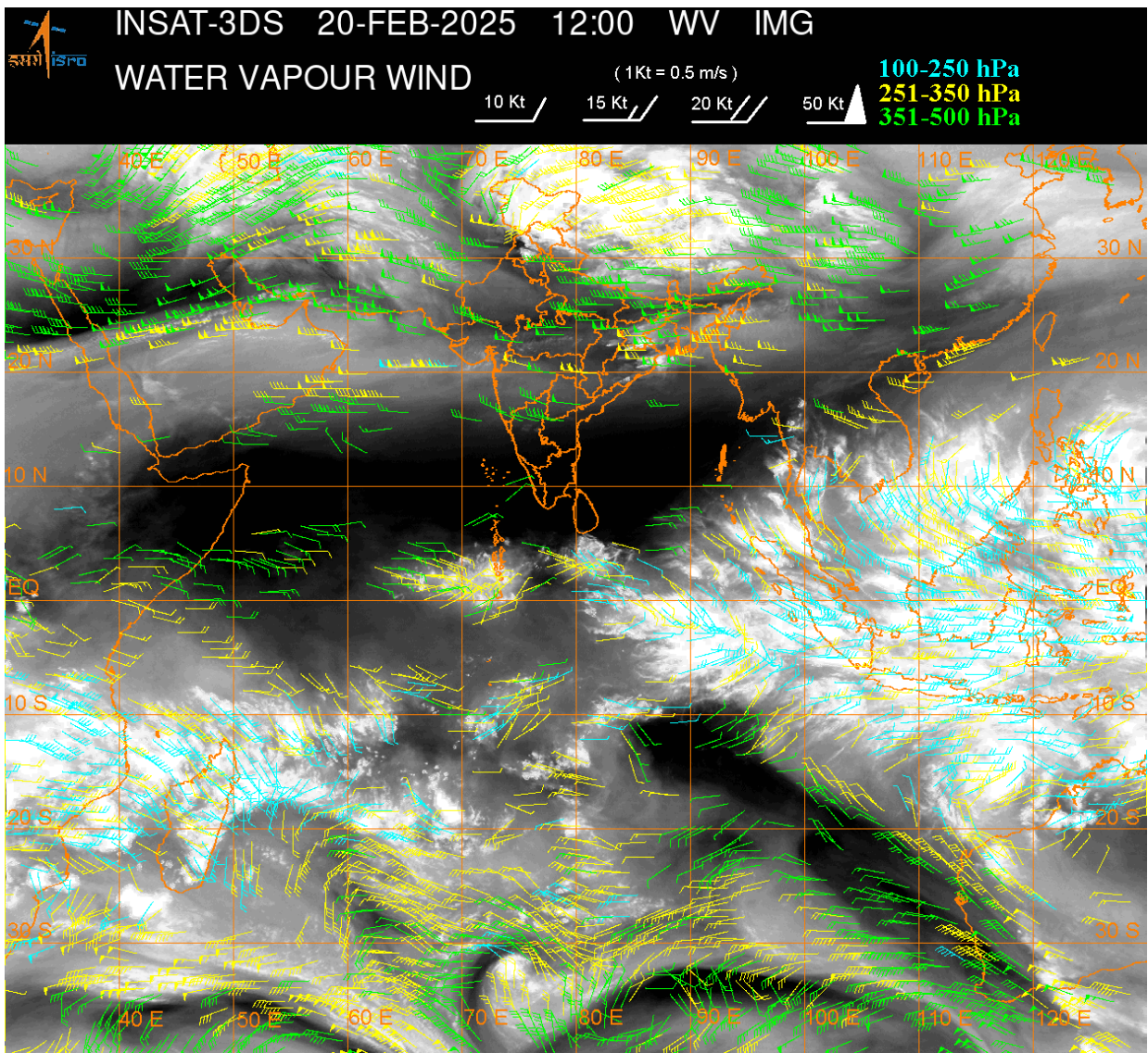
REGION COVERED BETWEEN LAT 50.0°N TO 35.0°S AND LONG 40.0°E TO 125.0°E (.)

**SALIENT FEATURES:-**

**WESTERN DISTURBANCE:-**

SCT MULTILAYERED CLOUDS OVER NORTH PAK LADAKH J&K HP PJB UTRKND UP NEPAL  
TIBET ADJ CHINA IN ASSW **WD** OVER THE AREA (.)

SCT MULTILAYERED CLOUDS OVER IRAQ IRAN PERSIAN GULF AND N/HOOD IN ASSW  
**ANOTHER WD** OVER THE AREA (.)



**CLOUDS DESCRIPTION WITHIN INDIA:-**

**NORTH:-**

SCT LOW/MED CLOUDS WITH EMBDD MOD TO INT CONVTN OVER NE LADAKH SE J&K N HP E PJB (.) SCT LOW/MED CLOUDS WITH EMBDD WK TO MOD CONVTN OVER REST LADAKH REST J&K REST HP S PJB N HARY S UTRKND N UP (.) SCT LOW/MED CLOUDS OVER REST UP S HARY (.)

**EAST:-**

SCT LOW/MED CLOUDS WITH EMBDD MOD TO INT CONVTN OVER S JHRKND N COTL ORS N CHTGH S GWB (.) SCT LOW/MED CLOUDS WITH EMBDD WK TO MOD CONVTN OVER SKM ARUPR SE ASSAM NAGA MANI (.) ISOL TO SCT LOW/MED CLOUDS OVER BHR REST N JHRKND S CHTGH SHWB REST ORS REST NE STATES (.)

**WEST:-**

ISOL TO SCT LOW/MED CLOUDS OVER EXT NE RAJ MP GUJ MADHYA MAHA (.)

**SOUTH:-**

SCT LOW/MED CLOUDS WITH EMBDD ISOL WK TO MOD CONVTN OVER N COTL AP N TLNGN NICOBAR ILS AREA (.) ISOL TO SCT LOW/MED CLOUDS OVER NIK REST TLNGN S COTL AP KER TN LKSDP ILS AREA ANDAMAN ILS (.)

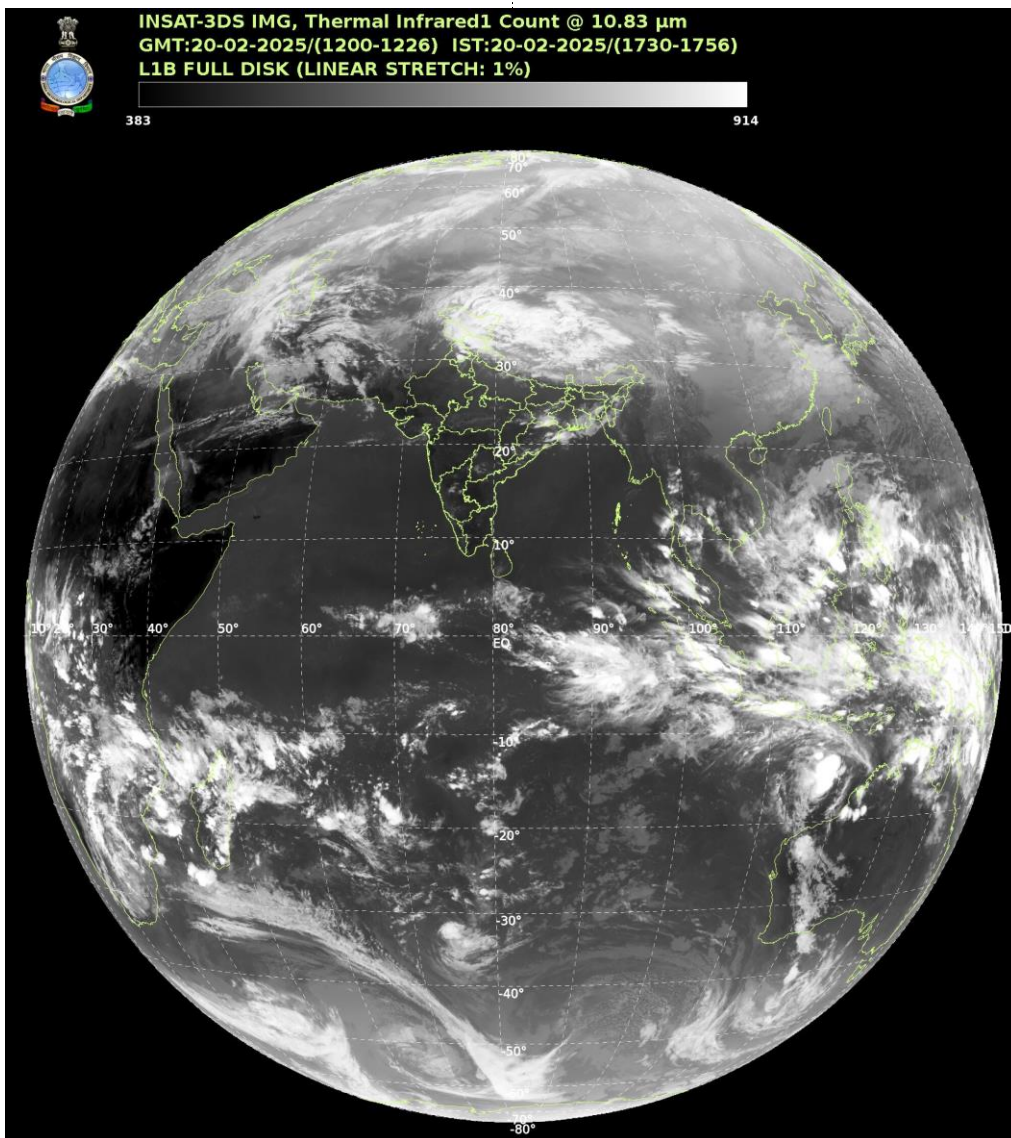
**ARABIAN SEA:-**

SCT LOW/MED CLOUDS WITH EMBDD ISOL WK TO MOD CONVTN OVER NORTH ARSEA (.) SCT LOW/MED CLOUDS OVER CENTRAL & SOUTH ARSEA LKSDP ILS AREA & COMORIN AREA (.)

**BAY OF BENGAL & ANDAMAN SEA:-**

SCT LOW/MED CLOUDS WITH EMBDD ISOL WK TO MOD CONVTN OVER NORTH & SE BAY AND ANDAMAN SEA (.) SCT LOW/MED CLOUDS OVER CENTRAL & SW BAY (.)

**CLOUDS DESCRIPTION OUTSIDE INDIA:-**



**SCT LOW/MED CLOUDS WITH EMBDD MOD TO INT CONVTN OVER MALDIVES NORTH PAK NEPAL BHUTAN TIBET CHINA EAST CHINA SEA THAILAND GULF OF THAILAND CAMBODIA VIETNAM SUMATRA STR OF MALACCA MALAYSIA BORNEO SOUTH CHINA SEA JAVA ILS & SEA CELEBES ILS & SEA PHILIPPINES SULU SEA MADAGASCAR MOZAMBIQUE CHANNEL AND OVER INDIAN OCEAN BET LAT 5.0N TO 35.0S LONG 40.0E TO 125.0E (.)**

**TOO 20/1840 EF=**

**NNNN**

**LEGEND:-**

|                           |              |  |
|---------------------------|--------------|--|
| <b>REGION</b>             | <b>NORTH</b> | <b>J&amp;K HP PJB HARY DLH UP UTRKND</b>                     |
|                           | <b>EAST</b>  | <b>BHR JHRKND CHTGH ORS WB SKM NORTH- EAST STATES</b>        |
|                           | <b>WEST</b>  | <b>RAJ MP GUJ MAHA GOA</b>                                   |
|                           | <b>SOUTH</b> | <b>TLNGN AP KRNTK KER TN LKSDP ANDAMAN &amp; NICOBAR ILS</b> |
| <b>CLOUD DISTRIBUTION</b> | <b>ISOL</b>  | <b>ISOLATED (LESS THAN 25%)</b>                              |
|                           | <b>SCT</b>   | <b>SCATTERED (25 TO 50%)</b>                                 |
|                           | <b>BKN</b>   | <b>BROKEN (51 TO 75%)</b>                                    |
|                           | <b>SLD</b>   | <b>SOLID (GREATER THAN 75%)</b>                              |

| <b>CLOUDS TOP TEMPERATURE</b>  | <b>CTT</b>                       | <b>CLOUD TOP TEMPERATURE</b>                                |
|--|----------------------------------|---|
| <b>CONVECTION</b>  | <b>WK CONVTN</b>                 | <b>WEAK CONVECTION<br/>(CTT GREATER THAN -25°C)</b>         |
|  | <b>MOD CONVTN</b>                | <b>MODERATE CONVECTION<br/>(CTT BETWEEN -25°C TO -40°C)</b> |
|  | <b>INT CONVTN</b>                | <b>INTENSE CONVECTION<br/>(CTT BETWEEN -41°C TO -70°C)</b>  |
|  | <b>V INT CONVTN</b>              | <b>VERY INTENSE CONVECTION<br/>(CTT LESS THAN -70°C)</b>    |
| <b>METEOROLOGICAL SUB- DIVISIONS, STATES &amp; UNION TERRITORIES</b> | <b>ARUPR</b>                     | <b>ARUNACHAL PRADESH</b>                                    |
|  | <b>BHR</b>                       | <b>BIHAR</b>  |
|  | <b>CHTGH</b>                     | <b>CHHATTISGARH</b>   |
|  | <b>COTL AP</b>                   | <b>COASTAL ANDHRA PRADESH</b>                               |
|  | <b>COTL KRNTK</b>                | <b>COASTAL KARNATAKA</b>                                    |
|  | <b>COTL ORS</b>                  | <b>COASTAL ORISSA</b>                                       |
|  | <b>GUJ</b>                       | <b>GUJARAT</b>  |
|  | <b>GWB</b>                       | <b>GANGETIC WEST BENGAL</b>                                 |
|  | <b>HARY</b>                      | <b>HARYANA</b>  |
|  | <b>DLH</b>                       | <b>DELHI</b>  |
|  | <b>HP</b>                        | <b>HIMACHAL PRADESH</b>                                     |
|  | <b>J&amp;K</b>                   | <b>JAMMU AND KASHMIR</b>                                    |
|  | <b>JHRKND</b>                    | <b>JHARKHAND</b>  |
|  | <b>KER</b>                       | <b>KERALA</b>   |
|  | <b>KKN</b>                       | <b>KONKAN</b>   |
|  | <b>LKSDP</b>                     | <b>LAKSHADWEEP</b>  |
|  | <b>M MAHA</b>                    | <b>MADHYA MAHARASHTRA</b>                                   |
|  | <b>MAHA</b>                      | <b>MAHARASHTRA</b>  |
|  | <b>MANI</b>                      | <b>MANIPUR</b>  |
|  | <b>MEGHA</b>                     | <b>MEGHALAYA</b>  |
|  | <b>MIZO</b>                      | <b>MIZORAM</b>  |
|  | <b>MP</b>                        | <b>MADHYA PRADESH</b>                                       |
|  | <b>MRTHWD</b>                    | <b>MARATHWADA</b>   |
|  | <b>NAGA</b>                      | <b>NAGALAND</b>   |
|  | <b>N COTL AP</b>                 | <b>NORTH COASTAL ANDHRA PRADESH</b>                         |
|  | <b>NIK</b>                       | <b>NORTH INTERIOR KARNATAKA</b>                             |
| <b>ORS</b>   | <b>ORISSA</b>                    |   |
| <b>PJB</b>   | <b>PUNJAB</b>                    |   |
| <b>RAJ</b>   | <b>RAJASTHAN</b>                 |   |
| <b>RYLSM</b>   | <b>RAYALASEEMA</b>               |   |
| <b>SAU &amp; KUTCH</b>   | <b>SAURASHTRA &amp; KUTCH</b>    |   |
| <b>SHWB</b>  | <b>SUB-HIMALAYAN WEST BENGAL</b> |   |
| <b>SIK</b>   | <b>SOUTH INTERIOR KARNATAKA</b>  |   |
| <b>SKM</b>   | <b>SIKKIM</b>                    |   |
| <b>TLNGN</b>   | <b>TELANGANA</b>                 |   |
| <b>TN</b>  | <b>TAMIL NADU</b>                |   |
| <b>TRP</b>   | <b>TRIPURA</b>                   |   |
| <b>UP</b>  | <b>UTTAR PRADESH</b>             |   |

|                      |               |                                  |
|----------------------|---------------|----------------------------------|
|                      | <b>UTRKND</b> | <b>UTTARAKHAND</b>               |
|                      | <b>VID</b>    | <b>VIDHARBHA</b>                 |
|                      | <b>SHWB</b>   | <b>SUB HIMALAYAN WEST BENGAL</b> |
|                      | <b>GWB</b>    | <b>GANGETIC WEST BENGAL</b>      |
|                      | <b>ARSEA</b>  | <b>ARABIAN SEA</b>               |
|                      | <b>ILS</b>    | <b>ISLANDS</b>                   |
| <b>MISCELLANEOUS</b> | <b>ASSW</b>   | <b>IN ASSOCIATION WITH</b>       |
|                      | <b>ASSTD</b>  | <b>ASSOCIATED</b>                |
|                      | <b>LLC</b>    | <b>LOW LEVEL CIRCULATION</b>     |
|                      | <b>EMBDD</b>  | <b>EMBEDDED</b>                  |
|                      | <b>N/HOOD</b> | <b>NEIGHBOURHOOD</b>             |
|                      | <b>EXT</b>    | <b>EXTREME</b>                   |