



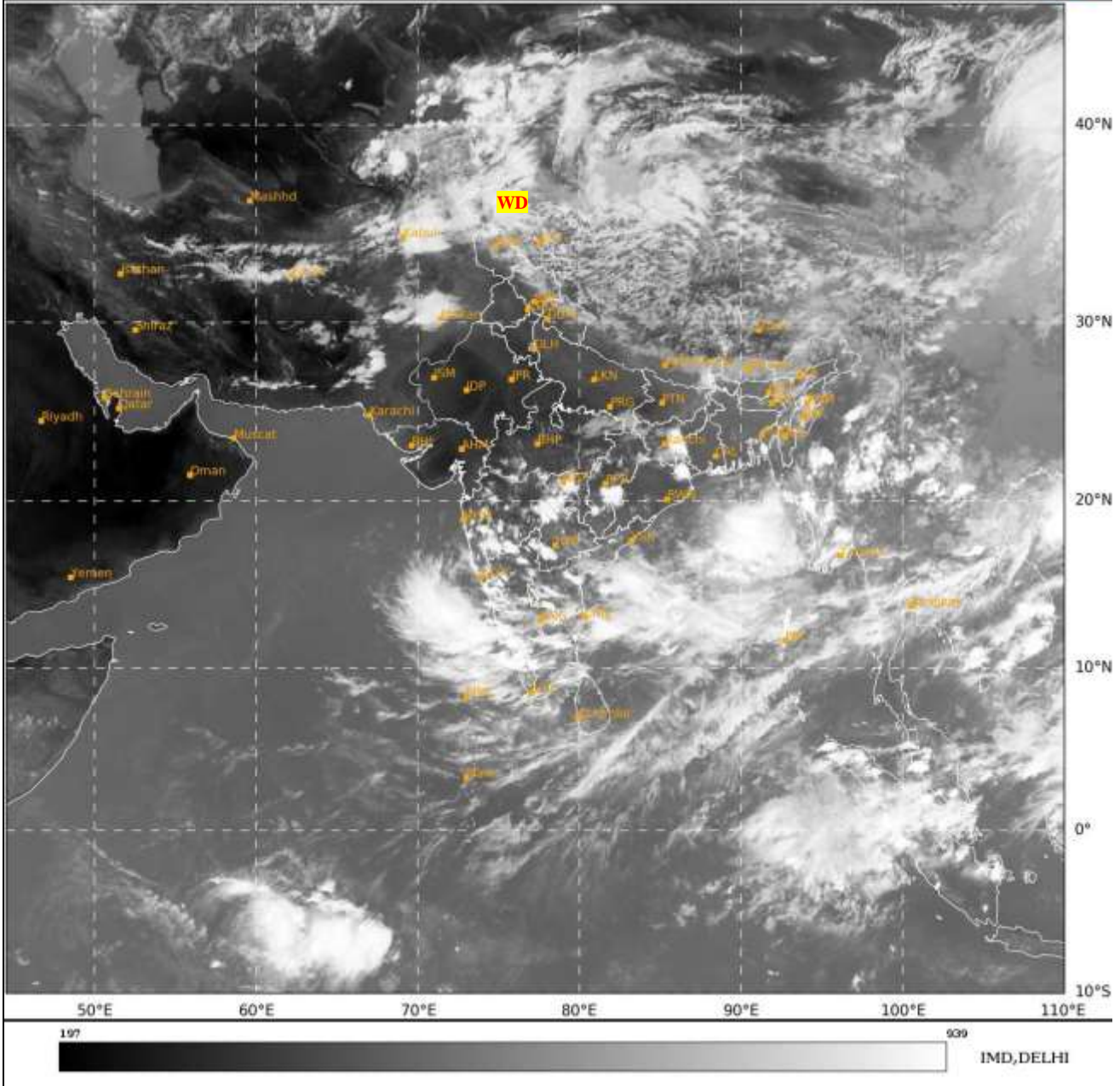
भारत मौसम विज्ञान विभाग
पृथ्वी विज्ञान मंत्रालय
India Meteorological Department
Ministry of Earth Sciences



**SATELLITE BULLETIN BASED ON SATELLITE
IMAGERIES AND PRODUCTS**
06.06.2024 TIME 0900 UTC

SAT : INSAT-3DR IMG
IMG_TIR1 10.8 um
LIC Mercator

06-06-2024/(0845 to 0912) GMT
06-06-2024/(1415 to 1442) IST



TCIN50 DEMS 060900

SATELLITE BULLETIN BASED ON INSAT-3DR PIC OF 060845 UTC (.)

REGION COVERED BETWEEN LAT 50.0°N TO 35.0°S AND LONG 30.0°E TO 125.0°E (.)

SALIENT FEATURES:-

WESTERN DISTURBANCE:-

SCT MULTILAYERED CLOUDS OVER PAK LADAKH J&K HP UTRKND PJB HARY UP E NEPAL
IN ASSW **WD** OVER THE AREA (.)

CONVECTIVE / THUNDERSTORM ACTIVITY:-

INTENSE TO VERY INTENSE CONVECTIVE / THUNDERSTORM ACTIVITY OBSERVED OVER S
JHRKND SW GWB N ORS S CHTGH VID S M MAHA S COTL AP S TLNGN COTL KRNTK SIK E TN
(MINIMUM **CTT MINUS 72-85 DEG CEL**) (.)



INSAT-3DR 06-JUN-2024 08:45 WV IMG

WATER VAPOUR WIND

(1Kt = 0.5 m/s)

10 Kt

15 Kt

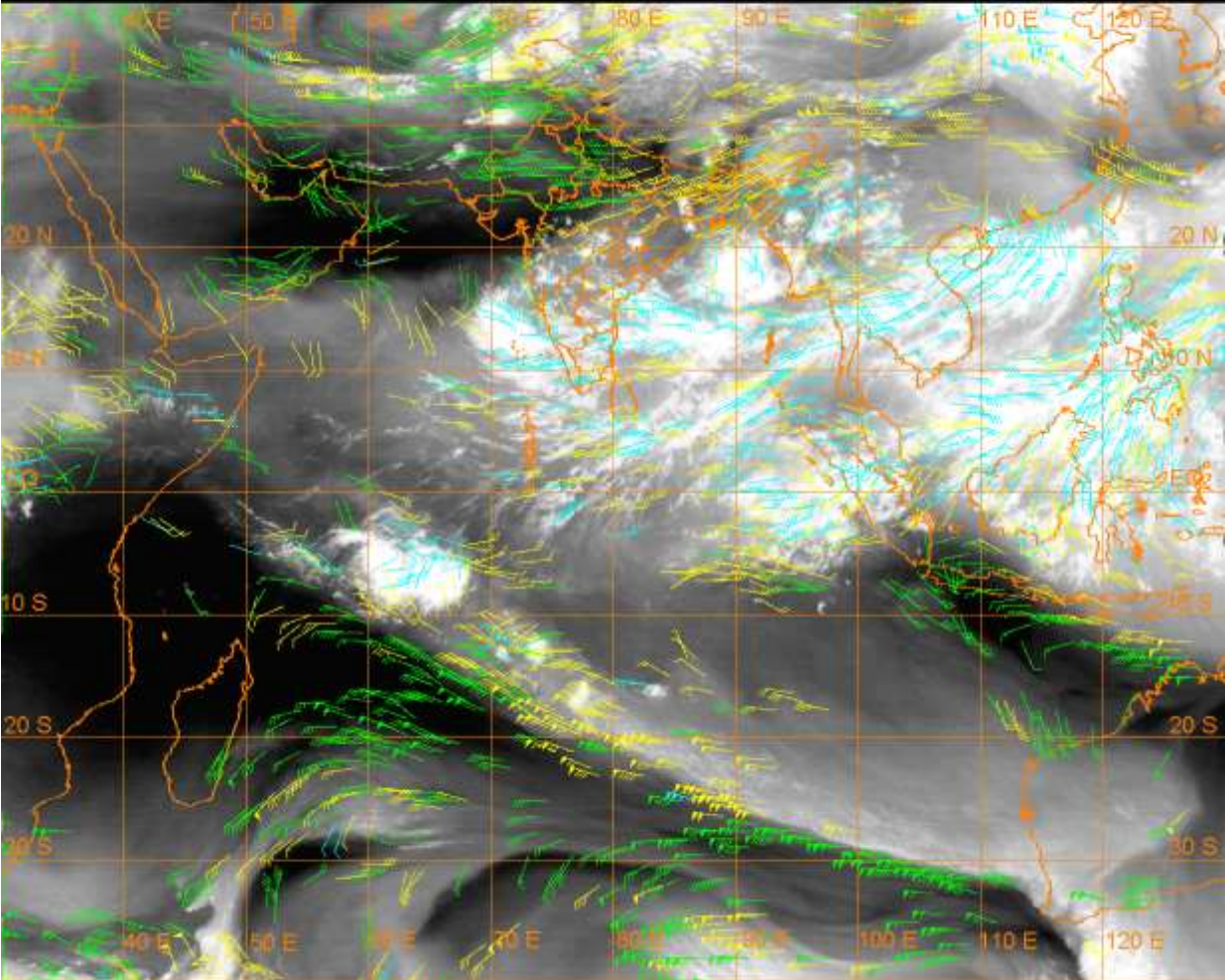
20 Kt

50 Kt

100-250 hPa

251-350 hPa

351-500 hPa



CLOUDS DESCRIPTION WITHIN INDIA:-

NORTH:-

SCT BKN LOW/MED CLOUDS WITH EMBDD WK TO MOD CONVTN OVER LADAKH N J&K HP UTRKND SE UP (.) SCT LOW/MED CLOUDS OVER SOUTH S J&K (.)

EAST:-

SCT LOW/MED CLOUDS WITH EMBDD INT TO V INT CONVTN OVER S JHRKND N ORS S CHTGH ADJ ORS (.) SCT LOW/MED CLOUDS WITH EMBDD MOD TO INT CONVTN OVER N CHTGH ASSAM S NAGA MANI (.) SCT LOW/MED CLOUDS WITH EMBDD WK TO MOD CONVTN OVER NE BHR E CHTGH SW ORS WC GWB NORTH SHWB SKM REST NE STATES (.) SCT LOW/MED CLOUDS OVER SE BHR N JHRKND REST ORS (.)

WEST:-

SCT LOW/MED CLOUDS WITH EMBDD INT TO V INT CONVTN OVER S MADHYA MAHA VID S MRTHWD (.) SCT LOW/MED CLOUDS WITH EMBDD MOD TO INT CONVTN OVER KKN (.) SCT LOW/MED CLOUDS WITH EMBDD WK TO MOD CONVTN OVER MP (.) SCT LOW/MED CLOUDS OVER REST MP GUJ REST MAHA & GOA (.)

SOUTH:-

SCT LOW/MED CLOUDS WITH EMBDD INT TO V INT CONVTN OVER TLNGN S COTL AP S RYLSM N KER NIK (.) SCT TO BKN LOW/MED CLOUDS WITH EMBDD MOD TO INT CONVTN OVER SE SIK N RYLSM COTL KER E TN LKSDP & ANDAMAN ILS (.) SCT LOW/MED CLOUDS WITH EMBDD WK TO MOD CONVTN OVER REST KRNTK REST KER W TN N COTL AP NICOBAR ILS (.) SCT LOW/MED CLOUDS OVER N TLNGN (.)

ARABIAN SEA:-

SCT LOW/MED CLOUDS WITH EMBDD INT TO V INT CONVTN OVER EC & SE ARSEA OFF GOA-KRNTK-KER COASTS & LKSDP ILS AREA (.) SCT LOW/MED CLOUDS WITH EMBDD ISOL MOD TO INT CONVTN OVER COMORIN AREA (.)

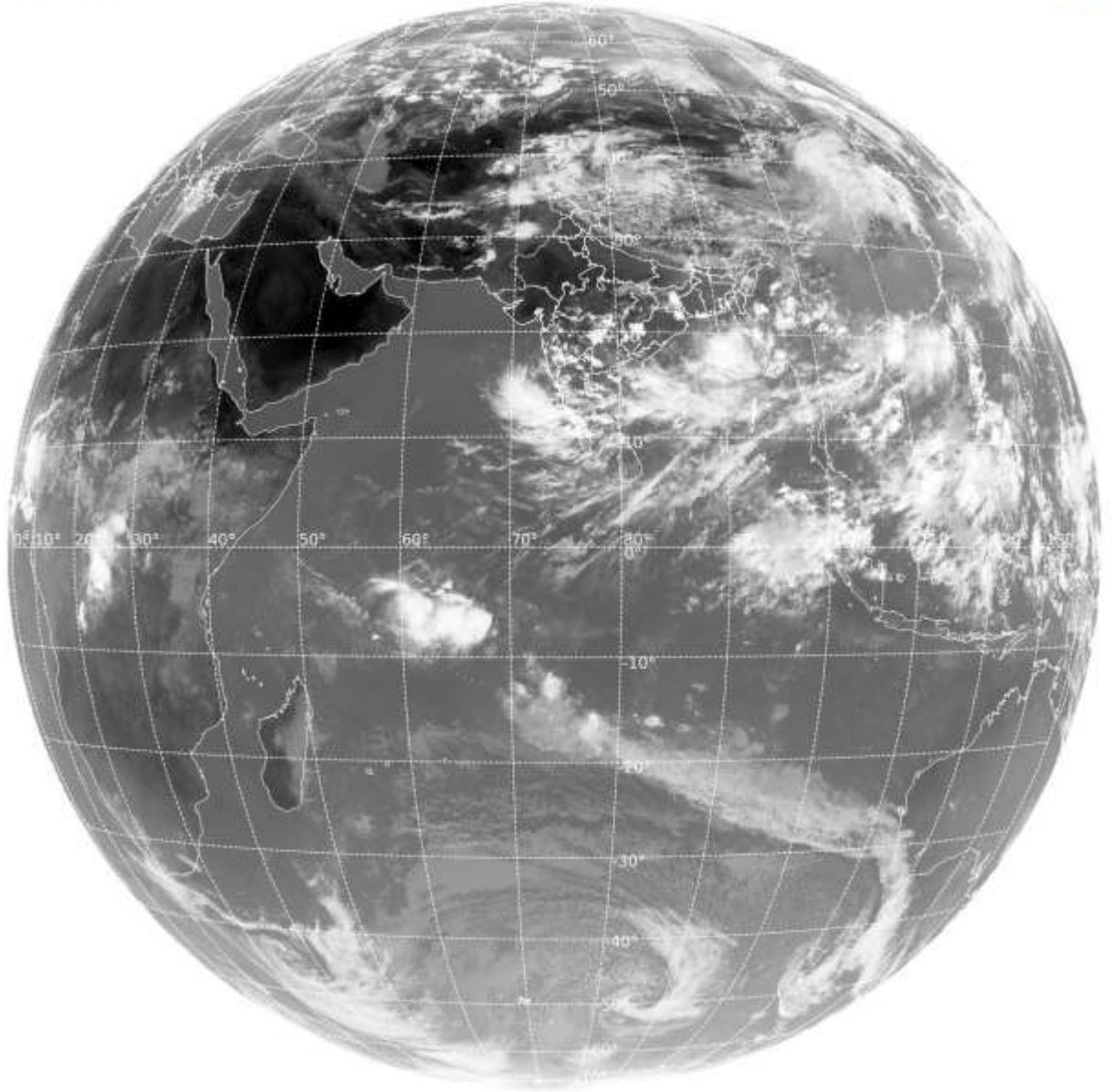
BAY OF BENGAL & ANDAMAN SEA:-

**SCT LOW/MED CLOUDS WITH EMBDD INT TO V INT CONVTN OVER BAY ARAKAN COAST
(MINIMUM CTT MINUS 93 DEG CEL) (.)**

CLOUDS DESCRIPTION OUTSIDE INDIA:-

SAT : INSAT-3DR IMG
Thermal Infrared1 Count 10.8 um
L1B FULL DISK

06-06-2024/(0845 to 0912) GMT
06-06-2024/(1415 to 1442) IST



197

990

IMD,DELHI

**SCT LOW/MED CLOUDS WITH EMBDD MOD TO INT CONVTN OVER SRI LANKA PALK STR
GULF OF MANNAR PAK NEPAL BHUTAN TIBET CHINA MYANMAR THAILAND GULF OF
THAILAND CAMBODIA LAOS VIETNAM GULF OF TONKIN HAINAN TAIWAN EAST CHINA
SUMATRA STR OF MALACCA MALAYSIA BORNEO SOUTH CHINA SEA CELEBES ILS & SEA
PHILIPPINES SEA AND OVER INDIAN OCEAN BET LAT 5.0N TO 10.0S LONG 60.0E TO 100.0E
AND BET LAT 10.0S TO 30.0S LONG 70.0E TO 110.0E (.)**

TOO 06/1525 HRS IST=

NNNN

LEGEND:-

REGION	NORTH	J&K HP PJB HARY DLH UP UTRKND
	EAST	BHR JHRKND CHTGH ORS WB SKM NORTH- EAST STATES
	WEST	RAJ MP GUJ MAHA GOA

	SOUTH	TLNGN AP KRNTK KER TN LKSDP ANDAMAN & NICOBAR ILS	
CLOUD DISTRIBUTION	ISOL	ISOLATED (LESS THAN 25%)	
	SCT	SCATTERED (25 TO 50%)	
	BKN	BROKEN (51 TO 75%)	
	SLD	SOLID (GREATER THAN 75%)	
CLOUDS TOP TEMPERATURE	CTT	CLOUD TOP TEMPERATURE	
CONVECTION	WK CONVTN	WEAK CONVECTION (CTT GREATER THAN -25°C)	
	MOD CONVTN	MODERATE CONVECTION (CTT BETWEEN -25°C TO -40°C)	
	INT CONVTN	INTENSE CONVECTION (CTT BETWEEN -41°C TO -70°C)	
	V INT CONVTN	VERY INTENSE CONVECTION (CTT LESS THAN -70°C)	
METEOROLOGICAL SUB- DIVISIONS, STATES & UNION TERRITORIES	ARUPR	ARUNACHAL PRADESH	
	BHR	BIHAR	
	CHTGH	CHHATTISGARH	
	COTL AP	COASTAL ANDHRA PRADESH	
	COTL KRNTK	COASTAL KARNATAKA	
	COTL ORS	COASTAL ORISSA	
	GUJ	GUJARAT	
	GWB	GANGETIC WEST BENGAL	
	HARY	HARYANA	
	DLH	DELHI	
	HP	HIMACHAL PRADESH	
	J&K	JAMMU AND KASHMIR	
	JHRKND	JHARKHAND	
	KER	KERALA	
	KKN	KONKAN	
	LKSDP	LAKSHADWEEP	
	M MAHA	MADHYA MAHARASHTRA	
	MAHA	MAHARASHTRA	
	MANI	MANIPUR	
	MEGHA	MEGHALAYA	
	MIZO	MIZORAM	
	MP	MADHYA PRADESH	
		MRTHWD	MARATHWADA
		NAGA	NAGALAND
		N COTL AP	NORTH COASTAL ANDHRA PRADESH
		NIK	NORTH INTERIOR KARNATAKA
		ORS	ORISSA
		PJB	PUNJAB
RAJ		RAJASTHAN	
RYLSM		RAYALASEEMA	
SAU & KUTCH		SAURASHTRA & KUTCH	
SHWB		SUB-HIMALAYAN WEST BENGAL	

	SIK	SOUTH INTERIOR KARNATAKA
	SKM	SIKKIM
	TLNGN	TELANGANA
	TN	TAMIL NADU
	TRP	TRIPURA
	UP	UTTAR PRADESH
	UTRKND	UTTARAKHAND
	VID	VIDHARBHA
	SHWB	SUB HIMALAYAN WEST BENGAL
	GWB	GANGETIC WEST BENGAL
	ARSEA	ARABIAN SEA
	ILS	ISLANDS
MISCELLANEOUS	ASSW	IN ASSOCIATION WITH
	ASSTD	ASSOCIATED
	LLC	LOW LEVEL CIRCULATION
	EMBDD	EMBEDDED
	N/HOOD	NEIGHBOURHOOD
	EXT	EXTREME