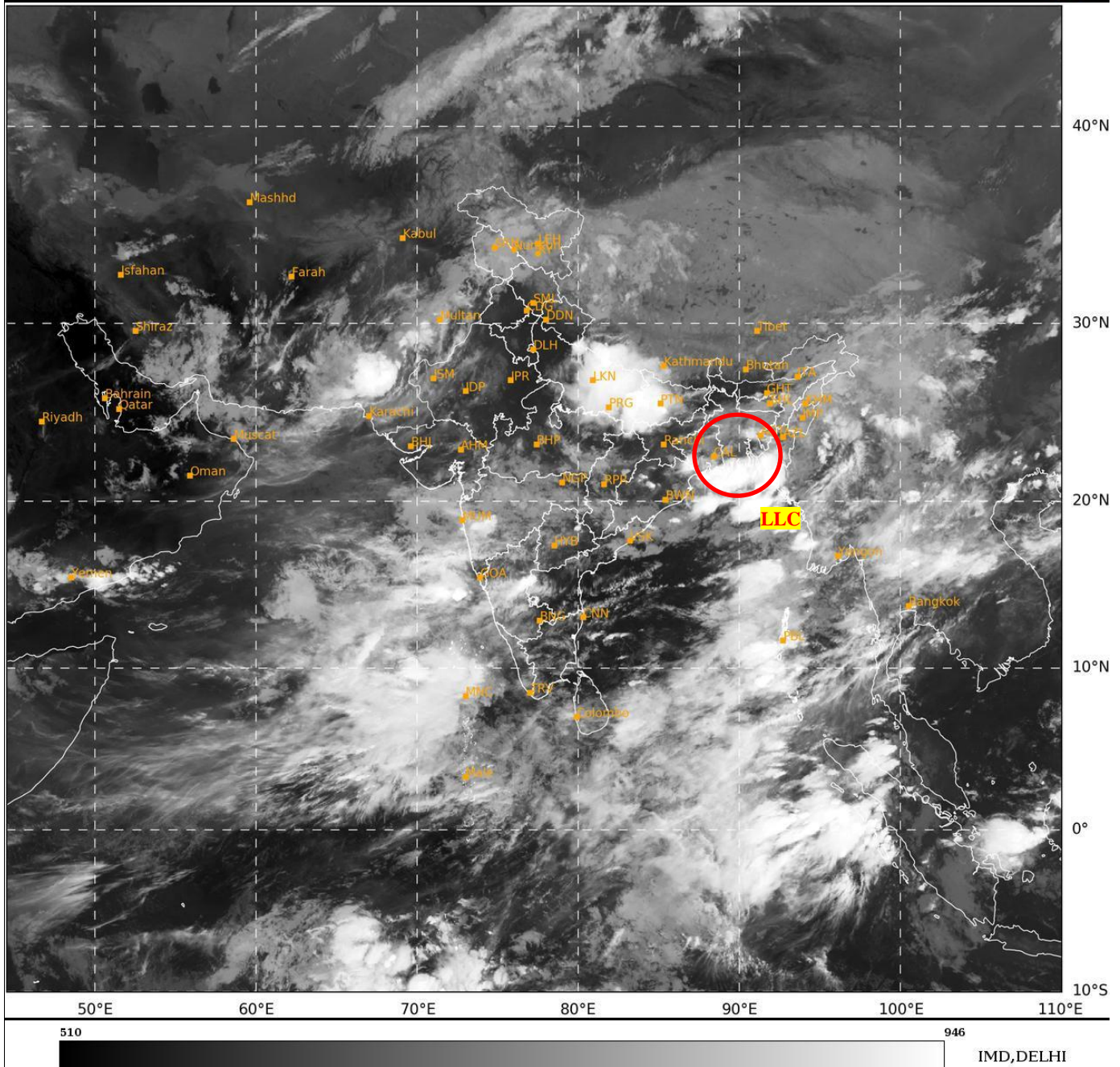




**SATELLITE BULLETIN BASED ON SATELLITE
IMAGERIES AND PRODUCTS**
17.08.2024 TIME 2100 UTC

SAT : INSAT-3DR IMG
IMG_TIR1 10.8 um
LIC Mercator

17-08-2024/(2145 to 2212) GMT
18-08-2024/(0315 to 0342) IST



TCIN50 DEMS 172100

SATELLITE BULLETIN BASED ON INSAT-3DR PIC OF 172145 UTC (.)

REGION COVERED BETWEEN LAT 50.0°N TO 35.0°S AND LONG 40.0°E TO 125.0°E (.)

SALIENT FEATURES:-

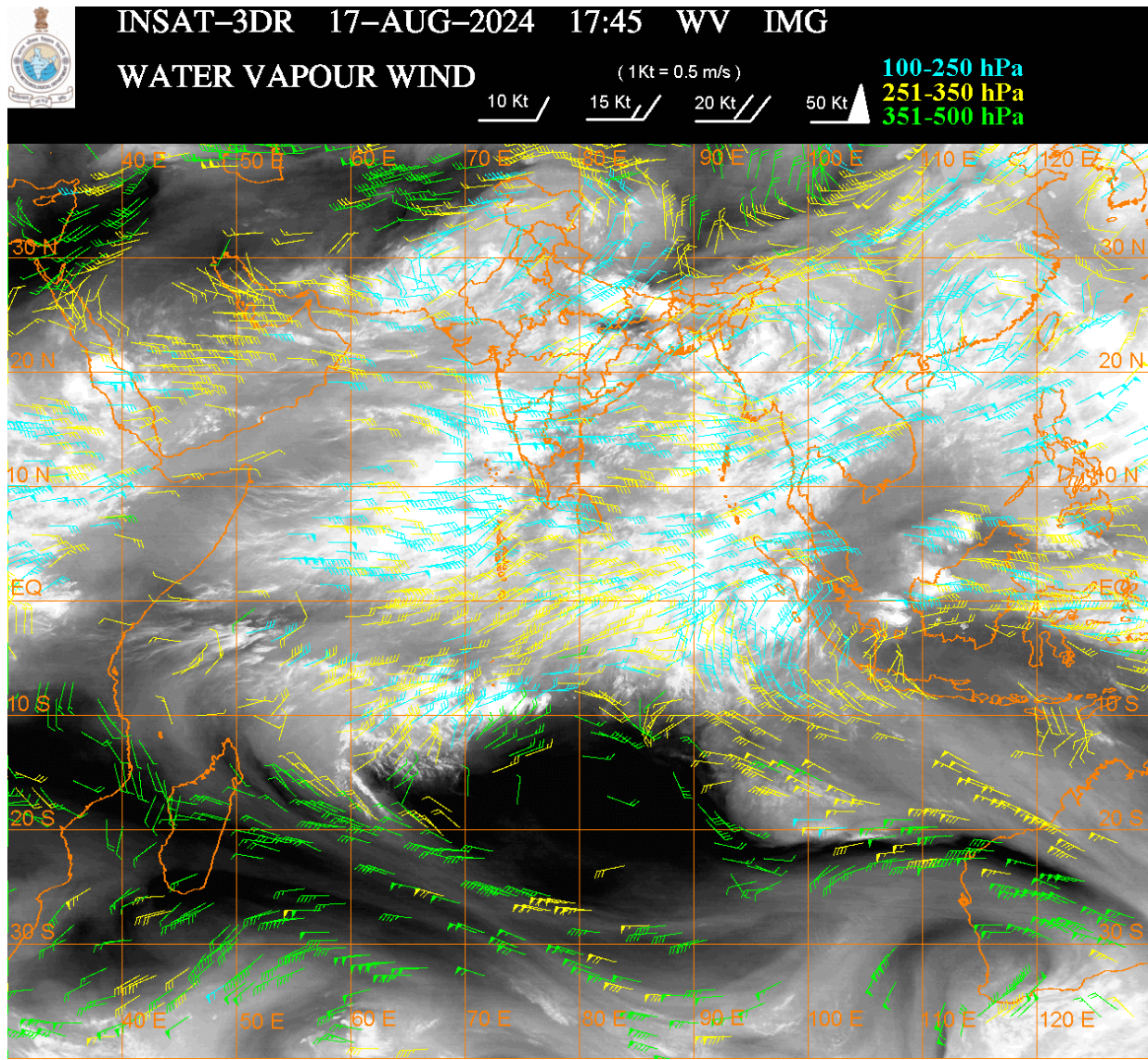
LLC OVER SOUTH BANGLADESH ADJOINING NORTH BAY & N/HOOD:-

LOW LEVEL CIRCULATION (**LLC**) OVER SOUTH BANGLADESH ADJ NORTH BAY & N/HOOD (.)
ASSTD SCT TO BKN LOW/MED CLOUDS WITH EMBDD INTENSE TO VERY INTENSE
CONVECTION OVER S BD ADJ NORTH BAY S GWB (MINIMUM **CTT MINUS 93 DEG CEL**) AND
MOD TO INT CONVTN OVER N GWB N BD MEGHA S ASSAM MANI MIZO TRP (.)

CONVECTIVE / THUNDERSTORM ACTIVITY:-

INTENSE TO VERY INTENSE CONVECTIVE / THUNDERSTORM ACTIVITY OVER EXT SE
UTRKND E UP W BHR NW & EXT SE JHRKND N ORS S GWB S BD SOUTH MADHYA MAHA N SIK
ADJ RYLSM EC TLNGN LKSDP ILS ANDAMAN & NICOBAR ILS (MINIMUM **CTT MINUS 70-93
DEG CEL**) (.)

**MODERATE TO INTENSE CONVECTIVE / THUNDERSTORM ACTIVITY OVER W UP E BHR
CHTGH N GWB NE STATES N BD NE MP KKN REST KRNTK (MINIMUM CTT MINUS 50-70 DEG
CEL) (.)**



CLOUDS DESCRIPTION WITHIN INDIA:-

NORTH:-

**SCT TO BKN LOW/MED CLOUDS WITH EMBDD INT TO V INT CONVTN OVER EXT SE UTRKND
E UP (.) SCT LOW/MED CLOUDS WITH EMBDD MOD TO INT CONVTN OVER W UP AND WK TO
MOD CONVTN OVER LADAKH J&K N HP N PJB (.) ISOL TO SCT LOW/MED CLOUDS OVER S HP
REST UTRKND S PJB HARY DLH (.)**

EAST:-

**SCT TO BKN LOW/MED CLOUDS WITH EMBDD INT TO V INT CONVTN OVER W BHR NW &
EXT SE JHRKND N ORS S GWB & S BD (.) SCT LOW/MED CLOUDS WITH EMBDD MOD TO INT
CONVTN OVER E BHR CHTGH N GWB NE STATES N BD AND WK TO MOD CONVTN OVER
REST JHRKND S ORS SHWB SKM (.)**

WEST:-

**SCT LOW/MED CLOUDS WITH EMBDD INT TO V INT CONVTN OVER SOUTH MADHYA MAHA
(.) SCT LOW/MED CLOUDS WITH EMBDD MOD TO INT CONVTN OVER NE MP KKN AND WK
TO MOD CONVTN OVER RAJ REST MP GUJ REST MAHA GOA (.)**

SOUTH:-

**SCT TO BKN LOW/MED CLOUDS WITH EMBDD INT TO V INT CONVTN OVER N SIK ADJ
RYLSM EC TLNGN LKSDP ILS ANDAMAN & NICOBAR ILS (.) SCT LOW/MED CLOUDS WITH
EMBDD MOD TO INT CONVTN OVER REST KRNTK AND WK TO MOD CONVTN OVER REST
TLNGN REST RYLSM COTL AP KER TN (.)**

ARABIAN SEA:-

**SCT LOW/MED CLOUDS WITH EMBDD INT TO V INT CONVTN OVER EC & SE ARSEA LKSDP
ILS AREA & MALDIVES AREA (.) SCT LOW/MED CLOUDS WITH EMBDD MOD TO INT CONVTN
OVER REST ARSEA COMORIN AREA AND WK TO MOD CONVTN OVER GULF OF CAMABY (.)**

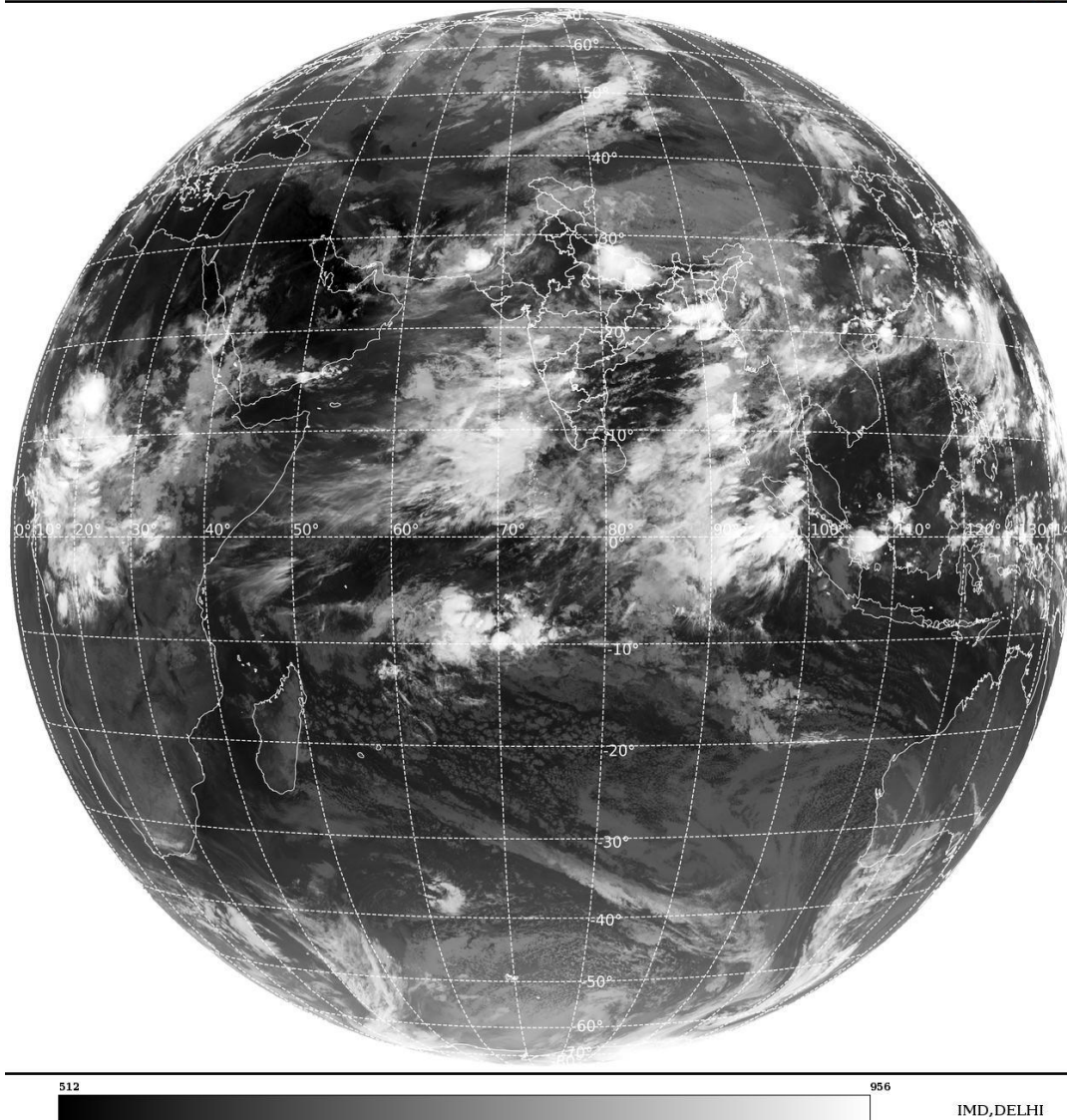
BAY OF BENGAL & ANDAMAN SEA:-

SCT LOW/MED CLOUDS WITH EMBDD INT TO V INT CONVTN OVER BAY ANDAMAN SEA ARAKAN COAST & TENASSERIM COAST (.)

CLOUDS DESCRIPTION OUTSIDE INDIA:-

SAT : INSAT-3DR IMG
Thermal Infrared1 Count 10.8 um
LIB FULL DISK

17-08-2024/(2145 to 2212) GMT
18-08-2024/(0315 to 0342) IST



SCT LOW/MED CLOUDS WITH EMBDD MOD TO INT CONVTN OVER SRI LANKA PALK STR GULF OF MANNAR MALDIVES PAK NEPAL TIBET CHINA YELLOW SEA EAST CHINA SEA TAIWAN MYANMAR THAILAND GULF OF THAILAND CAMBODIA LAOS N VIETNAM GULF OF TONKIN HAINAN SUMATRA STR OF MALACCA MALAYSIA BORNEO SOUTH CHINA SEA CELEBES ILS & SEA PHILIPPINES SULU SEA AND OVER INDIAN OCEAN BET LAT 5.0N TO 20.0S LONG 45.0E TO 105.0E (.)

TOO 18/0430 HRS IST=

NNNN

LEGEND:-

REGION	NORTH	J&K HP PJB HARY DLH UP UTRKND
	EAST	BHR JHRKND CHTGH OR WB SKM NORTH- EAST STATES
	WEST	RAJ MP GUJ MAHA GOA
	SOUTH	TLNGN AP KRNTK KER TN LKSDP ANDAMAN & NICOBAR ILS

CLOUD DISTRIBUTION	ISOL	ISOLATED (LESS THAN 25%)	
	SCT	SCATTERED (25 TO 50%)	
	BKN	BROKEN (51 TO 75%)	
	SLD	SOLID (GREATER THAN 75%)	
CLOUDS TOP TEMPERATURE	CTT	CLOUD TOP TEMPERATURE	
CONVECTION	WK CONVTN	WEAK CONVECTION (CTT GREATER THAN -25°C)	
	MOD CONVTN	MODERATE CONVECTION (CTT BETWEEN -25°C TO -40°C)	
	INT CONVTN	INTENSE CONVECTION (CTT BETWEEN -41°C TO -70°C)	
	V INT CONVTN	VERY INTENSE CONVECTION (CTT LESS THAN -70°C)	
METEOROLOGICAL SUB- DIVISIONS, STATES & UNION TERRITORIES	ARUPR	ARUNACHAL PRADESH	
	BHR	BIHAR	
	CHTGH	CHHATTISGARH	
	COTL AP	COASTAL ANDHRA PRADESH	
	COTL KRNTK	COASTAL KARNATAKA	
	COTL ORS	COASTAL ORISSA	
	GUJ	GUJARAT	
	GWB	GANGETIC WEST BENGAL	
	HARY	HARYANA	
	DLH	DELHI	
	HP	HIMACHAL PRADESH	
	J&K	JAMMU AND KASHMIR	
	JHRKND	JHARKHAND	
	KER	KERALA	
	KKN	KONKAN	
	LKSDP	LAKSHADWEEP	
	M MAHA	MADHYA MAHARASHTRA	
	MAHA	MAHARASHTRA	
	MANI	MANIPUR	
	MEGHA	MEGHALAYA	
	MIZO	MIZORAM	
	MP	MADHYA PRADESH	
		MRTHWD	MARATHWADA
		NAGA	NAGALAND
N COTL AP		NORTH COASTAL ANDHRA PRADESH	
NIK		NORTH INTERIOR KARNATAKA	
ORS		ORISSA	
PJB		PUNJAB	
RAJ		RAJASTHAN	
RYLSM		RAYALASEEMA	
SAU & KUTCH		SAURASHTRA & KUTCH	
SHWB		SUB-HIMALAYAN WEST BENGAL	
SIK		SOUTH INTERIOR KARNATAKA	
SKM		SIKKIM	

	TLNGN	TELANGANA
	TN	TAMIL NADU
	TRP	TRIPURA
	UP	UTTAR PRADESH
	UTRKND	UTTARAKHAND
	VID	VIDHARBHA
	SHWB	SUB HIMALAYAN WEST BENGAL
	GWB	GANGETIC WEST BENGAL
	ARSEA	ARABIAN SEA
	ILS	ISLANDS
MISCELLANEOUS	ASSW	IN ASSOCIATION WITH
	ASSTD	ASSOCIATED
	LLC	LOW LEVEL CIRCULATION
	EMBDD	EMBEDDED
	N/HOOD	NEIGHBOURHOOD
	EXT	EXTREME