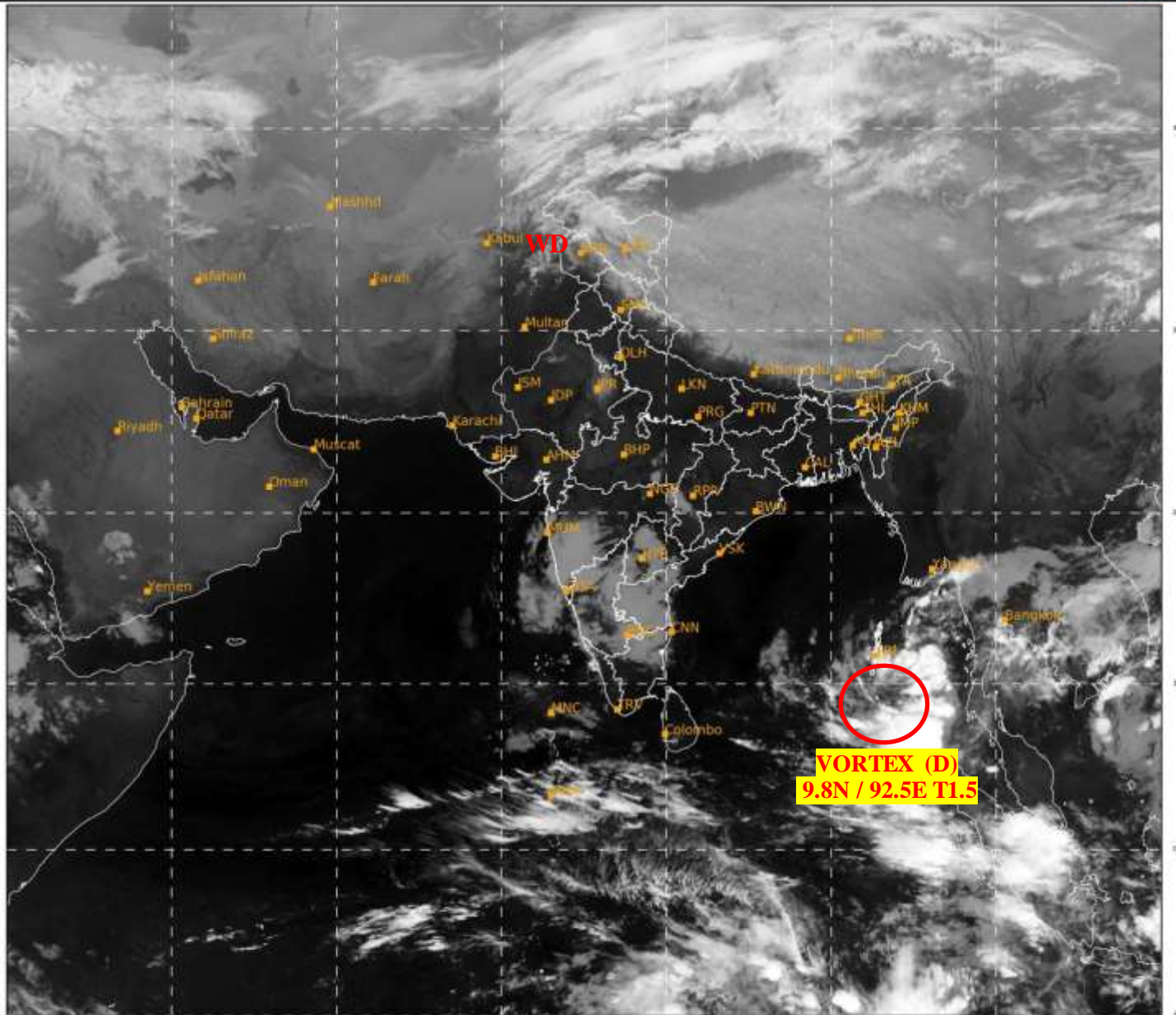




**SATELLITE BULLETIN BASED ON SATELLITE
IMAGERIES AND PRODUCTS**
20.03.2022 TIME 0000 UTC

SAT : INSAT-3D IMG
IMG_TIR1 10.8 um
LIC Mercator

20-03-2022/(0000 to 0027) GMT
20-03-2022/(0530 to 0557) IST



526

943

IMD, DELHI

TCIN50 DEMS 200000

SATELLITE BULLETIN BASED ON INSAT-3D PIC OF 200000 UTC (.)

REGION COVERED BETWEEN LAT 50.0°N TO 30.0°S AND LONG 40.0°E TO 125.0°E (.)

SALIENT FEATURES:-

VORTEX (DEPRESSION) OVER SOUTH-EAST BAY ADJ SOUTH ANDAMAN SEA:-

VORTEX (D) OVER SE BAY ADJ S ANDAMAN SEA HAS INTENSIFIED AND NOW LAY **CENTERED WITHIN HALF A DEGREE OF 9.8N / 92.5E** (.) INTENSITY **T1.5/1.5** (.) SHEAR PATTERN (.) ASSTD BKN LOW/MED CLOUDS WITH EMBDD INT TO V INT CONVTN OVER SE BAY ADJ ANDAMAN SEA BET LAT 6.0N TO 13.0N LONG 90.0E TO 97.0E AND ANDAMAN & NICOBAR ILS (.) MINIMUM CTT MINUS **93** DEG C (.) INTENSE CONVECTION LIES IN EAST SECTOR OF THE SYSTEM CENTER (.)

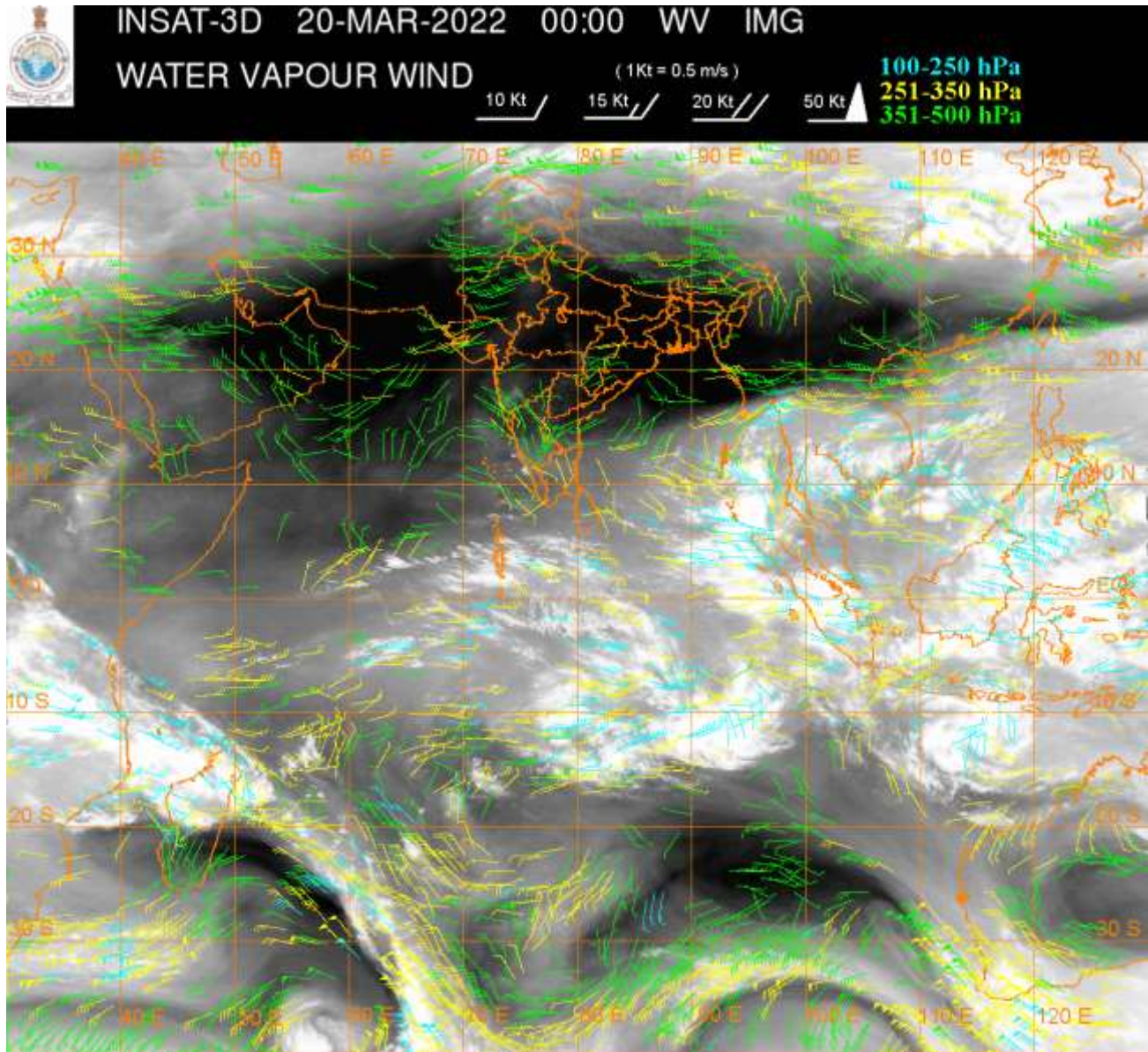
WESTERN DISTURBANCE (WD):-

SCT MULTILAYERED CLOUDS OVER N PAK J&K LADAKH AND N/HOOD IN ASSW **WD** OVER THE AREA (.)

PRECIPITATION NOWCASTING:-

(BASED ON SCOPE NOWCASTING TOOL AT 0000 UTC IN A LEAD TIME OF 180 MINUTES):-

RAINFALL UPTO 3-7 MM OVER ANDAMAN & NICOBAR ILS (.)



CLOUDS DESCRIPTION WITHIN INDIA:-

NORTH:-

**SCT LOW/MED CLOUDS WITH EMBDD MOD TO INT CONVTN OVER NW LADAKH EXT N J&K (.)
SCT LOW/MED CLOUDS WITH EMBDD ISOL WK TO MOD CONVTN OVER REST LADAKH REST
J&K N HP N UTRKND (.) SCT LOW/MED CLOUDS OVER S HARY SE UP (.)**

EAST:-

**SCT LOW/MED CLOUDS WITH EMBDD WK CONVTN OVER C CHTGH SKM ARUPR (.) SCT
LOW/MED CLOUDS OVER EXT SW BHR REST CHTGH SW ORS N SHWB ASSAM MEGHA NAGA
MANI (.)**

WEST:-

**SCT LOW/MED CLOUDS WITH EMBDD WK CONVTN OVER N RAJ SE MP EXT SE GUJ MAHA (.)
SCT LOW/MED CLOUDS OVER GOA (.)**

SOUTH:-

**SCT TO BKN LOW/MED CLOUDS WITH EMBDD INT TO V INT CONVTN OVER NICOBAR ILS
(MINIMUM CTT MINUS 76 DEG C) AND MOD TO INT CONVTN OVER ANDAMAN ILS (.) SCT
LOW/MED CLOUDS WITH EMBDD WK TO MOD CONVTN OVER KRNTK TLNGN RYLSM COTL
AP N KER N TN (.) SCT LOW/MED CLOUDS OVER S KER S TN LKSDP (.)**

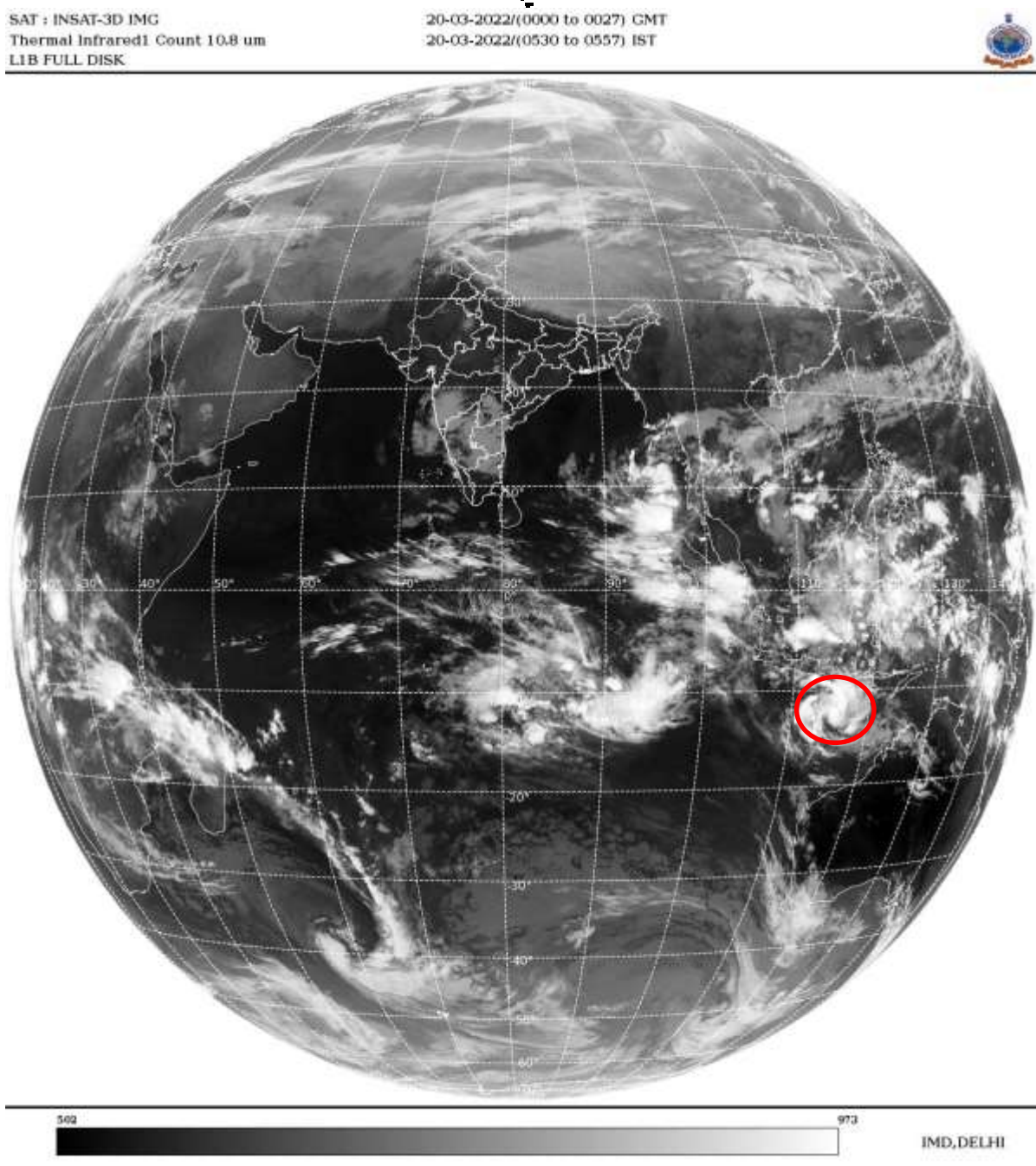
ARABIAN SEA:-

**SCT LOW/MED CLOUDS WITH EMBDD MOD TO INT CONVTN OVER SE ARSEA OFF KER COAST
& N/HOOD AND ISOL WK CONVTN OVER EC ARSEA OFF MAHA-GOA-KRNTK COASTS (.) SCT
LOW/MED CLOUDS OVER NW ARSEA OFF S GUJ COAST AND COMORIN AREA (.)**

BAY OF BENGAL & ANDAMAN SEA:-

BKN LOW/MED CLOUDS WITH EMBDD INT TO V INT CONVTN OVER SE BAY & ANDAMAN SEA (MINIMUM CTT MINUS 93 DEG C) (.) SCT LOW/MED CLOUDS WITH EMBDD MOD TO INT CONVTN OVER SW BAY AND ISOL WK CONVTN OVER WC BAY OFF S AP COAST (.)

CLOUDS DESCRIPTION OUTSIDE INDIA:



VORTEX OVER SOUTH INDIAN OCEAN:-

VORTEX OVER SOUTH INDIAN OCEAN CENTERED NEAR 12.5S / 114.9E (.) INTENSITY T 2.0/2.0 (.) ASSTD BKN LOW/MED CLOUDS WITH EMBDD INT TO V INT CONVTN OVER AREA BET LAT 9.0S TO 15.5S LONG 110.5E TO 118.0E (.)

SCT LOW/MED CLOUDS WITH EMBDD MOD TO INT CONVTN OVER MALDIVES CHINA YELLOW SEA E CHINA SEA S MYANMAR THAILAND GULF OF THAILAND CAMBODIA LAOS VIETNAM GULF OF TONKIN HAINAN SUMATRA STR OF MALACCA MALAYSIA BORNEO S CHINA SEA JAVA ILS & SEA CELEBES ILS & SEA PHILIPPINES SULU SEA N MADAGASCAR N MOZAMBIQUE CHANNEL AND OVER INDIAN OCEAN BET LAT 5.0N TO 30.0S LONG 50.0E TO 80.0E AND BET LAT 5.0N TO 17.0S LONG 80.0E TO 120.0E (.)

TOO 20/0730 HRS IST=

NNNN

LEGEND:-

REGION	NORTH	J&K HP PJB HARY DLH UP UTRKND
	EAST	BHR JHRKND CHTGH OR WB SKM NORTH- EAST STATES
	WEST	RAJ MP GUJ MAHA GOA
	SOUTH	TLNGN AP KRNTK KER TN LKSDP ANDAMAN & NICOBAR ILS

CLOUD DISTRIBUTION	ISOL	ISOLATED (LESS THAN 25%)	
	SCT	SCATTERED (25 TO 50%)	
	BKN	BROKEN (51 TO 75%)	
	SLD	SOLID (GREATER THAN 75%)	
CLOUDS TOP TEMPERATURE	CTT	CLOUD TOP TEMPERATURE	
CONVECTION	WK CONVIN	WEAK CONVECTION (CTT GREATER THAN -25°C)	
	MOD CONVIN	MODERATE CONVECTION (CTT BETWEEN -25°C TO -40°C)	
	INT CONVIN	INTENSE CONVECTION (CTT BETWEEN -41°C TO -70°C)	
	V INT CONVIN	VERY INTENSE CONVECTION (CTT LESS THAN -70°C)	
METEOROLOGICAL SUB-DIVISIONS, STATES & UNION TERRITORIES	ARUPR	ARUNACHAL PRADESH	
	BHR	BIHAR	
	CHTGH	CHHATTISGARH	
	COTL AP	COASTAL ANDHRA PRADESH	
	COTL KRNTK	COASTAL KARNATAKA	
	COTL ORS	COASTAL ORISSA	
	GUJ	GUJARAT	
	GWB	GANGETIC WEST BENGAL	
	HARY	HARYANA	
	DLH	DELHI	
	HP	HIMACHAL PRADESH	
	J&K	JAMMU AND KASHMIR	
	JHRKND	JHARKHAND	
	KER	KERALA	
	KKN	KONKAN	
	LKSDP	LAKSHADWEEP	
	M MAHA	MADHYA MAHARASHTRA	
	MAHA	MAHARASHTRA	
	MANI	MANIPUR	
	MEGHA	MEGHALAYA	
	MIZO	MIZORAM	
	MP	MADHYA PRADESH	
		MRTHWD	MARATHWADA
		NAGA	NAGALAND

	N COTL AP	NORTH COASTAL ANDHRA PRADESH
	NIK	NORTH INTERIOR KARNATAKA
	ORS	ORISSA
	PJB	PUNJAB
	RAJ	RAJASTHAN
	RYLSM	RAYALASEEMA
	SAU & KUTCH	SAURASHTRA & KUTCH
	SHWB	SUB-HIMALAYAN WEST BENGAL
	SIK	SOUTH INTERIOR KARNATAKA
	SKM	SIKKIM
	TLNGN	TELANGANA
	TN	TAMIL NADU
	TRP	TRIPURA
	UP	UTTAR PRADESH
	UTRKN	UTTARAKHAND
	VID	VIDHARBHA
	SHWB	SUB HIMALAYAN WEST BENGAL
	GWB	GANGETIC WEST BENGAL
	ARSEA	ARABIAN SEA
	ILS	ISLANDS
MISCELLANEOUS	ASSW	IN ASSOCIATION WITH
	ASSTD	ASSOCIATED
	LLC	LOW LEVEL CIRCULATION
	EMBDD	EMBEDDED
	N/HOOD	NEIGHBOURHOOD
	EXT	EXTREME