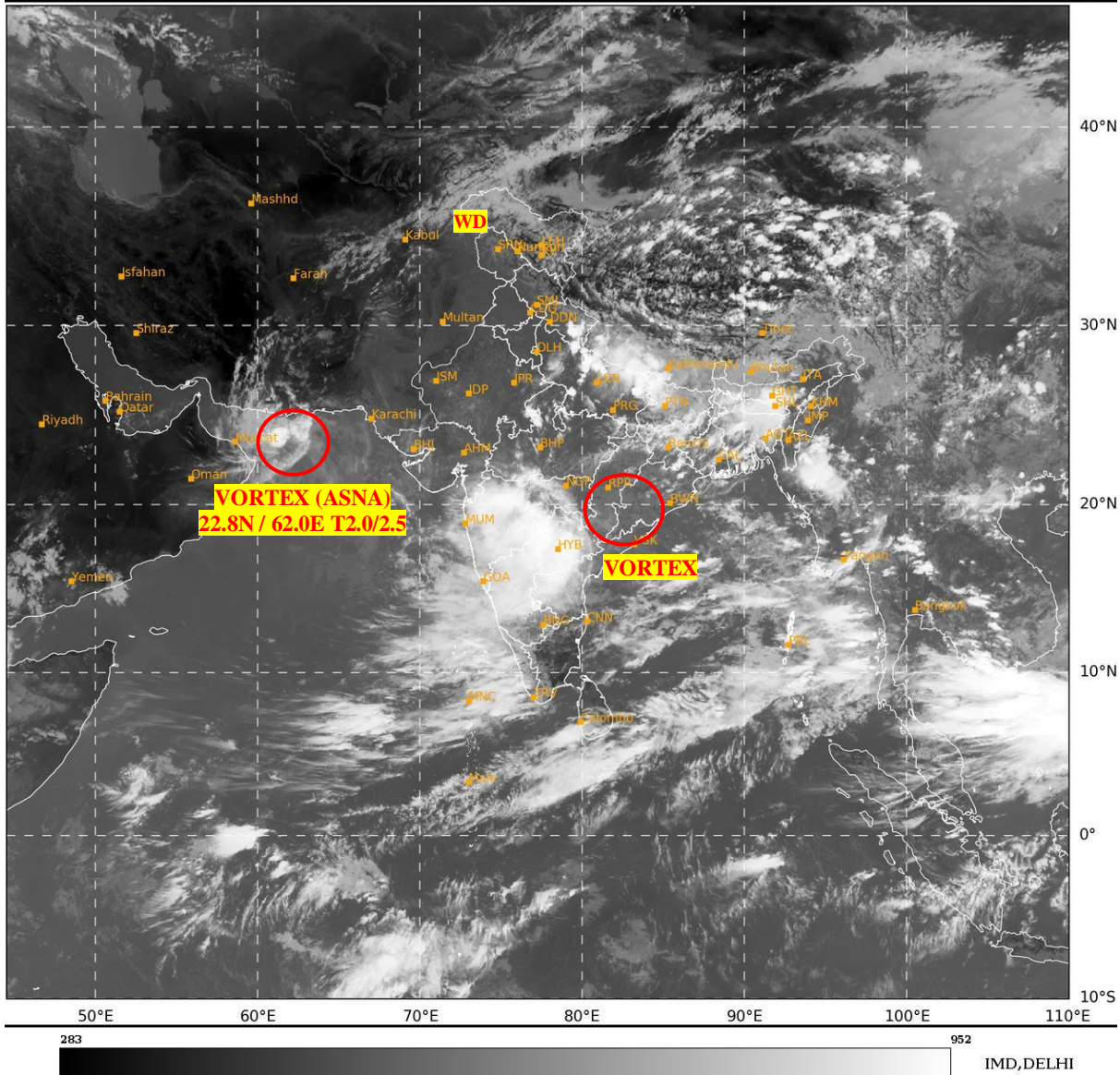




**SATELLITE BULLETIN BASED ON SATELLITE  
IMAGERIES AND PRODUCTS**  
**01.09.2024 TIME 0600 UTC**

SAT : INSAT-3DR IMG  
IMG\_TIR1 10.8 um  
LIC Mercator

01-09-2024/(0615 to 0642) GMT  
01-09-2024/(1145 to 1212) IST



TCIN50 DEMS 010600

SATELLITE BULLETIN BASED ON INSAT-3DR PIC OF 010615 UTC (.)

REGION COVERED BETWEEN LAT 50.0°N TO 35.0°S AND LONG 40.0°E TO 125.0°E (.)

**SALIENT FEATURES:-**

**VORTEX (ASNA) OVER NORTH WEST ARABIAN SEA & N/HOOD:-**

VORTEX (ASNA) OVER NORTH WEST ARSEA & N/HOOD HAS DISORGANISED AND LAY CENTERED NEAR 22.8N / 62.0E (.) INTENSITY T2.0/2.5 (.) ASSTD SCT TO BKN LOW/MED CLOUDS WITH EMBDD INTENSE CONVTN OVER NW ARSEA (MINIMUM CTT MINUS 70 DEG CEL) AND MOD TO INT CONVTN OVER SE IRAN ADJ S PAK GULF OF OMAN & N OMAN (.)

**VORTEX OVER NORTH COASTAL AP ADJ S ORS & N/HOOD:-**

VORTEX OVER NORTH COTL AP ADJ S ORS & N/HOOD (.) ASSTD BKN LOW/MED CLOUDS WITH EMBDD INT TO V INT CONVTN OVER TLNGN RYLSMA NIK MAHA (MINIMUM CTT MINUS 93 DEG CEL) (.)

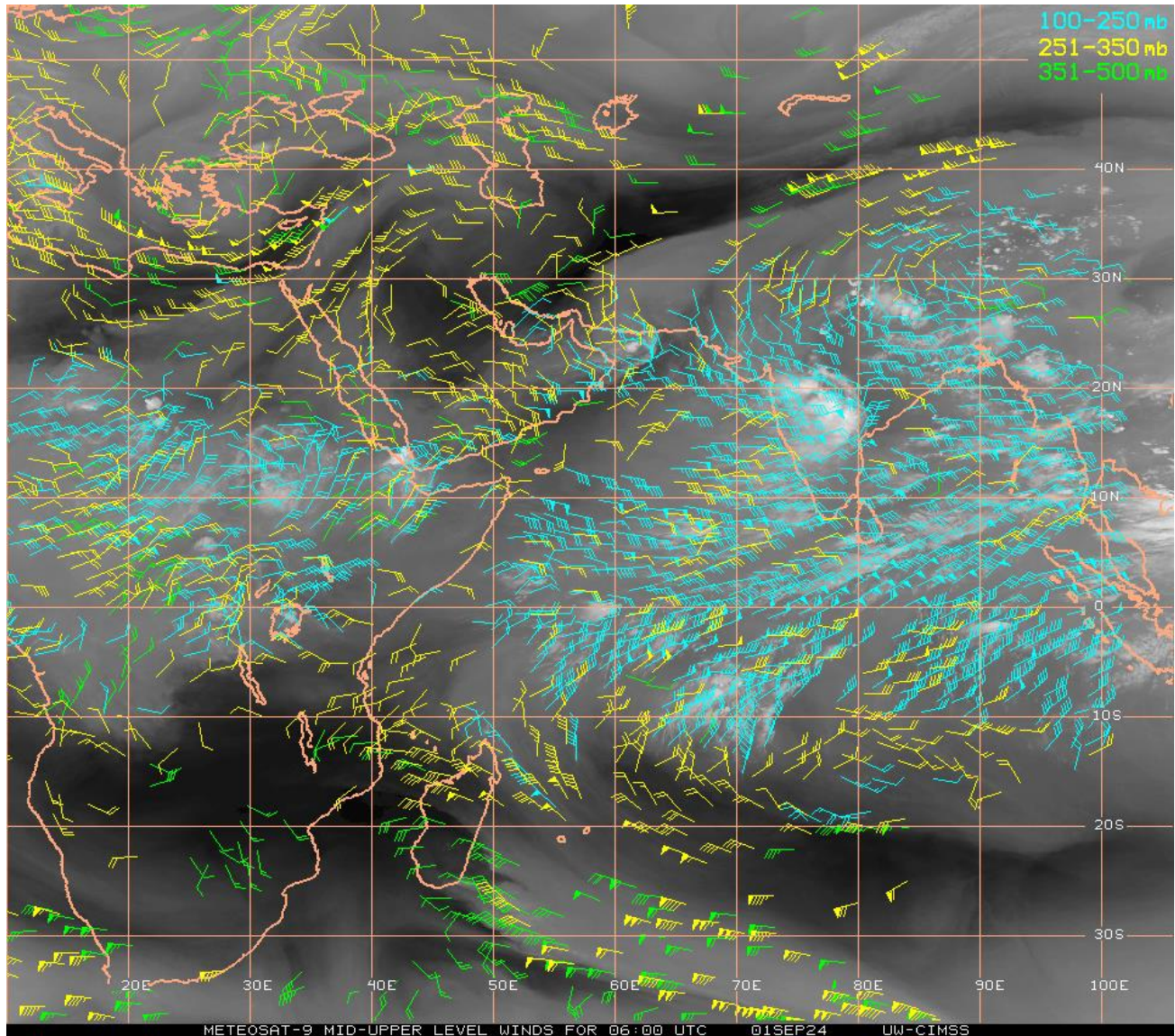
**WESTERN DISTURBANCE (WD):-**

SCT MULTILAYERED CLOUDS OVER N PAK LADAKH & N/HOOD IN ASSW WD OVER THE AREA (.)

**CONVECTIVE / THUNDERSTORM ACTIVITY:-**

**INTENSE TO VERY INTENSE CONVECTIVE / THUNDERSTORM ACTIVITY OBSERVED OVER EAST UTRKND N UP BHR MAHA NIK TLNGN RYLSM (MINIMUM CTT MINUS 80-93 DEG CEL) (.)**

**MODERATE TO INTENSE CONVECTIVE / THUNDERSTORM ACTIVITY OBSERVED OVER WEST MP JHRKND GWB SHWB ASSAM MEGHA TRP GOA REST KRNTK KER LKSDP ILS ANDAMAN & NICOBAR ILS (MINIMUM CTT MINUS 50-70 DEG CEL) (.)**



**CLOUDS DESCRIPTION WITHIN INDIA:-**

**NORTH:-**

**SCT LOW/MED CLOUDS WITH EMBDD INT TO V INT CONVTN OVER E UTRKND N UP NEPAL (.) SCT LOW/MED CLOUDS WITH EMBDD MOD TO INT CONVTN OVER S UP AND I WK TO MOD CONVTN OVER LADAKH HP W UTRKND (.) SCT LOW/MED CLOUDS OVER J&K PJB HARY DLH (.)**

**EAST:-**

**SCT TO BKN LOW/MED CLOUDS WITH EMBDD INT TO V INT CONVTN OVER BHR JHRKND GWB ASSAM MEGHA & BD (.) SCT LOW/MED CLOUDS WITH EMBDD MOD TO INT CONVTN OVER N CHTGH N ORS SHWB REST NE STATES AND WK TO MOD CONVTN OVER S CHTGH SOUTH ORS SKM (.)**

**WEST:-**

**SCT TO BKN LOW/MED CLOUDS WITH EMBDD INT TO V INT CONVTN OVER MAHA (.) SCT LOW/MED CLOUDS WITH EMBDD MOD TO INT CONVTN OVER MP SE GUJ GOA AND WK TO MOD CONVTN OVER E RAJ (.) SCT LOW/MED CLOUDS OVER W RAJ REST GUJ (.)**

**SOUTH:-**

**BKN LOW/MED CLOUDS WITH EMBDD INT TO V INT CONVTN OVER NIK TLNGN RYLSM (MINIMUM CTT MINUS 90 DEG CEL) (.) SCT LOW/MED CLOUDS WITH EMBDD MOD TO INT CONVTN OVER CENTRAL COTL AP REST KRNTK KER LKSDP ILS ANDAMAN & NICOBAR ILS AND WK TO MOD CONVTN OVER REST COTL AP TN (.)**

**ARABIAN SEA:-**

SCT TO BKN LOW/MED CLOUDS WITH EMBDD INT CONV TN OVER NW & SE ARSEA LKSDP ILS AREA (.) SCT LOW/MED CLOUDS WITH EMBDD MOD TO INT CONV TN OVER EC ARSEA MALDIVES & COMORIN AREA AND ISOL WK TO MOD CONV TN OVER REST ARSEA GULF OF KUTCH GULF OF CAMBAY (.)

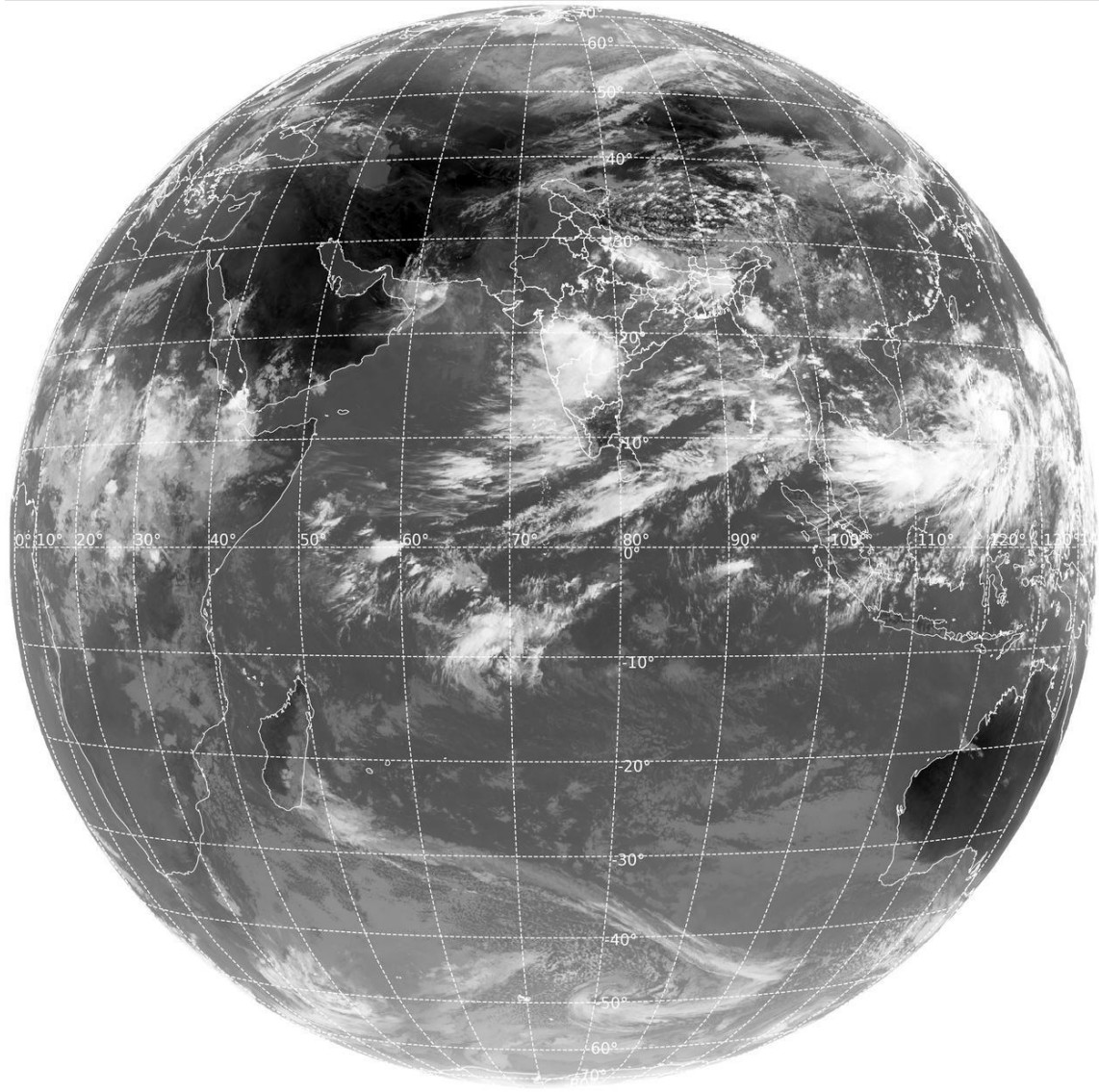
**BAY OF BENGAL & ANDAMAN SEA:-**

SCT TO BKN LOW/MED CLOUDS WITH EMBDD INT TO V INT CONV TN OVER BAY ANDAMAN SEA (.)

**CLOUDS DESCRIPTION OUTSIDE INDIA:-**

SAT : INSAT-3DR IMG  
Thermal Infrared1 Count 10.8 um  
L1B FULL DISK

01-09-2024/(0615 to 0642) GMT  
01-09-2024/(1145 to 1212) IST



IMD, DELHI

SCT LOW/MED CLOUDS WITH EMBDD MOD TO INT CONV TN OVER S SRI LANKA MALDIVES NEPAL BHUTAN TIBET CHINA MYANMAR THAILAND GULF OF THAILAND CAMBODIA LAOS VIETNAM GULF OF TONKIN SUMATRA STR OF MALACCA MALAYSIA BORNEO SOUTH CHINA SEA JAVA SEA CELEBES ILS & SEA PHILIPPINES SULU SEA YELLOW SEA MADAGASCAR AND OVER INDIAN OCEAN BET LAT 5.0N TO 12.0S LONG 50.0E TO 100.0E (.)

TOO 01/1330 HRS IST=

NNNN

**LEGEND:-**

<b>REGION</b>	<b>NORTH</b>	<b>J&amp;K HP PJB HARY DLH UP UTRKND</b>	
	<b>EAST</b>	<b>BHR JHRKND CHTGH OR WB SKM NORTH- EAST STATES</b>	
	<b>WEST</b>	<b>RAJ MP GUJ MAHA GOA</b>	
	<b>SOUTH</b>	<b>TLNGN AP KRNTK KER TN LKSDP ANDAMAN &amp; NICOBAR ILS</b>	
<b>CLOUD DISTRIBUTION</b>	<b>ISOL</b>	<b>ISOLATED (LESS THAN 25%)</b>	
	<b>SCT</b>	<b>SCATTERED (25 TO 50%)</b>	
	<b>BKN</b>	<b>BROKEN (51 TO 75%)</b>	
	<b>SLD</b>	<b>SOLID (GREATER THAN 75%)</b>	
<b>CLOUDS TOP TEMPERATURE</b>	<b>CTT</b>	<b>CLOUD TOP TEMPERATURE</b>	
<b>CONVECTION</b>	<b>WK CONVTN</b>	<b>WEAK CONVECTION (CTT GREATER THAN -25°C)</b>	
	<b>MOD CONVTN</b>	<b>MODERATE CONVECTION (CTT BETWEEN -25°C TO -40°C)</b>	
	<b>INT CONVTN</b>	<b>INTENSE CONVECTION (CTT BETWEEN -41°C TO -70°C)</b>	
	<b>V INT CONVTN</b>	<b>VERY INTENSE CONVECTION (CTT LESS THAN -70°C)</b>	
<b>METEOROLOGICAL SUB- DIVISIONS, STATES &amp; UNION TERITORIES</b>	<b>ARUPR</b>	<b>ARUNACHAL PRADESH</b>	
	<b>BHR</b>	<b>BIHAR</b>	
	<b>CHTGH</b>	<b>CHHATTISGARH</b>	
	<b>COTL AP</b>	<b>COASTAL ANDHRA PRADESH</b>	
	<b>COTL KRNTK</b>	<b>COASTAL KARNATAKA</b>	
	<b>COTL ORS</b>	<b>COASTAL ORISSA</b>	
	<b>GUJ</b>	<b>GUJARAT</b>	
	<b>GWB</b>	<b>GANGETIC WEST BENGAL</b>	
	<b>HARY</b>	<b>HARYANA</b>	
	<b>DLH</b>	<b>DELHI</b>	
	<b>HP</b>	<b>HIMACHAL PRADESH</b>	
	<b>J&amp;K</b>	<b>JAMMU AND KASHMIR</b>	
	<b>JHRKND</b>	<b>JHARKHAND</b>	
	<b>KER</b>	<b>KERALA</b>	
	<b>KKN</b>	<b>KONKAN</b>	
	<b>LKSDP</b>	<b>LAKSHADWEEP</b>	
	<b>M MAHA</b>	<b>MADHYA MAHARASHTRA</b>	
	<b>MAHA</b>	<b>MAHARASHTRA</b>	
	<b>MANI</b>	<b>MANIPUR</b>	
	<b>MEGHA</b>	<b>MEGHALAYA</b>	
	<b>MIZO</b>	<b>MIZORAM</b>	
	<b>MP</b>	<b>MADHYA PRADESH</b>	
		<b>MRTHWD</b>	<b>MARATHWADA</b>
		<b>NAGA</b>	<b>NAGALAND</b>
<b>N COTL AP</b>		<b>NORTH COASTAL ANDHRA PRADESH</b>	
<b>NIK</b>		<b>NORTH INTERIOR KARNATAKA</b>	

	<b>ORS</b>	<b>ORISSA</b>
	<b>PJB</b>	<b>PUNJAB</b>
	<b>RAJ</b>	<b>RAJASTHAN</b>
	<b>RYLSM</b>	<b>RAYALASEEMA</b>
	<b>SAU &amp; KUTCH</b>	<b>SAURASHTRA &amp; KUTCH</b>
	<b>SHWB</b>	<b>SUB-HIMALAYAN WEST BENGAL</b>
	<b>SIK</b>	<b>SOUTH INTERIOR KARNATAKA</b>
	<b>SKM</b>	<b>SIKKIM</b>
	<b>TLNGN</b>	<b>TELANGANA</b>
	<b>TN</b>	<b>TAMIL NADU</b>
	<b>TRP</b>	<b>TRIPURA</b>
	<b>UP</b>	<b>UTTAR PRADESH</b>
	<b>UTRKND</b>	<b>UTTARAKHAND</b>
	<b>VID</b>	<b>VIDHARBHA</b>
	<b>SHWB</b>	<b>SUB HIMALAYAN WEST BENGAL</b>
	<b>GWB</b>	<b>GANGETIC WEST BENGAL</b>
	<b>ARSEA</b>	<b>ARABIAN SEA</b>
	<b>ILS</b>	<b>ISLANDS</b>
<b>MISCELLANEOUS</b>	<b>ASSW</b>	<b>IN ASSOCIATION WITH</b>
	<b>ASSTD</b>	<b>ASSOCIATED</b>
	<b>LLC</b>	<b>LOW LEVEL CIRCULATION</b>
	<b>EMBDD</b>	<b>EMBEDDED</b>
	<b>N/HOOD</b>	<b>NEIGHBOURHOOD</b>
	<b>EXT</b>	<b>EXTREME</b>