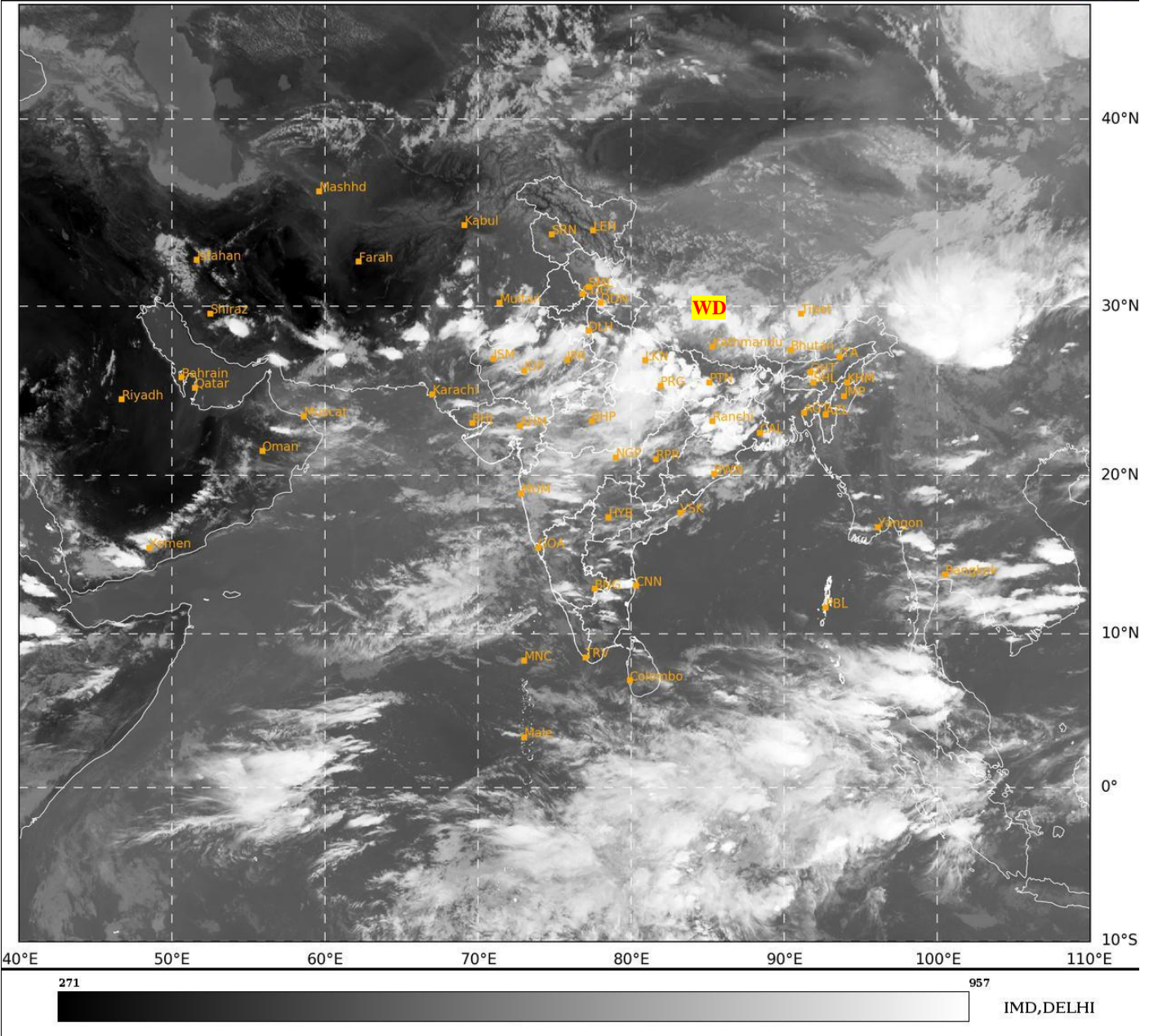




**SATELLITE BULLETIN BASED ON SATELLITE
IMAGERIES AND PRODUCTS**
09.08.2024 TIME 1200 UTC

SAT : INSAT-3DR IMG
IMG_TIR1 10.8 um
LIC Mercator

09-08-2024/(1145 to 1212) GMT
09-08-2024/(1715 to 1742) IST



TCIN50 DEMS 091200

SATELLITE BULLETIN BASED ON INSAT-3DR PIC OF 091145 UTC (.)

REGION COVERED BETWEEN LAT 50.0°N TO 35.0°S AND LONG 40.0°E TO 125.0°E (.)

SALIENT FEATURES:-

WESTERN DISTURBANCE (WD) :-

SCT MULTILAYERED CLOUDS OVER TIBET ADJ CHINA IN ASSW **WD** OVER THE AREA (.)

CONVECTIVE / THUNDERSTORM ACTIVITY:-

INTENSE TO VERY INTENSE CONVECTIVE / THUNDERSTORM ACTIVITY OVER N RAJ UP N MP S BHR JHRKND N ORS GWB SOUTH SHWB N TN (MINIMUM **CTT MINUS 80-90 DEG CEL**) (.)

MODERATE TO INTENSE CONVECTIVE / THUNDERSTORM ACTIVITY OVER NE HP UTRKND SE HARY DLH S RAJ SHWB SKM W ASSAM MEGHA W ARUPR REST MP N GUJ MAHA KRNTK S COTL AP N KER LKSDP ILS & NICOBAR ILS AREA (MINIMUM **CTT MINUS 50-70 DEG CEL**) (.)



INSAT-3DR 09-AUG-2024 11:45 WV IMG

WATER VAPOUR WIND

(1Kt = 0.5 m/s)

10 Kt

15 Kt

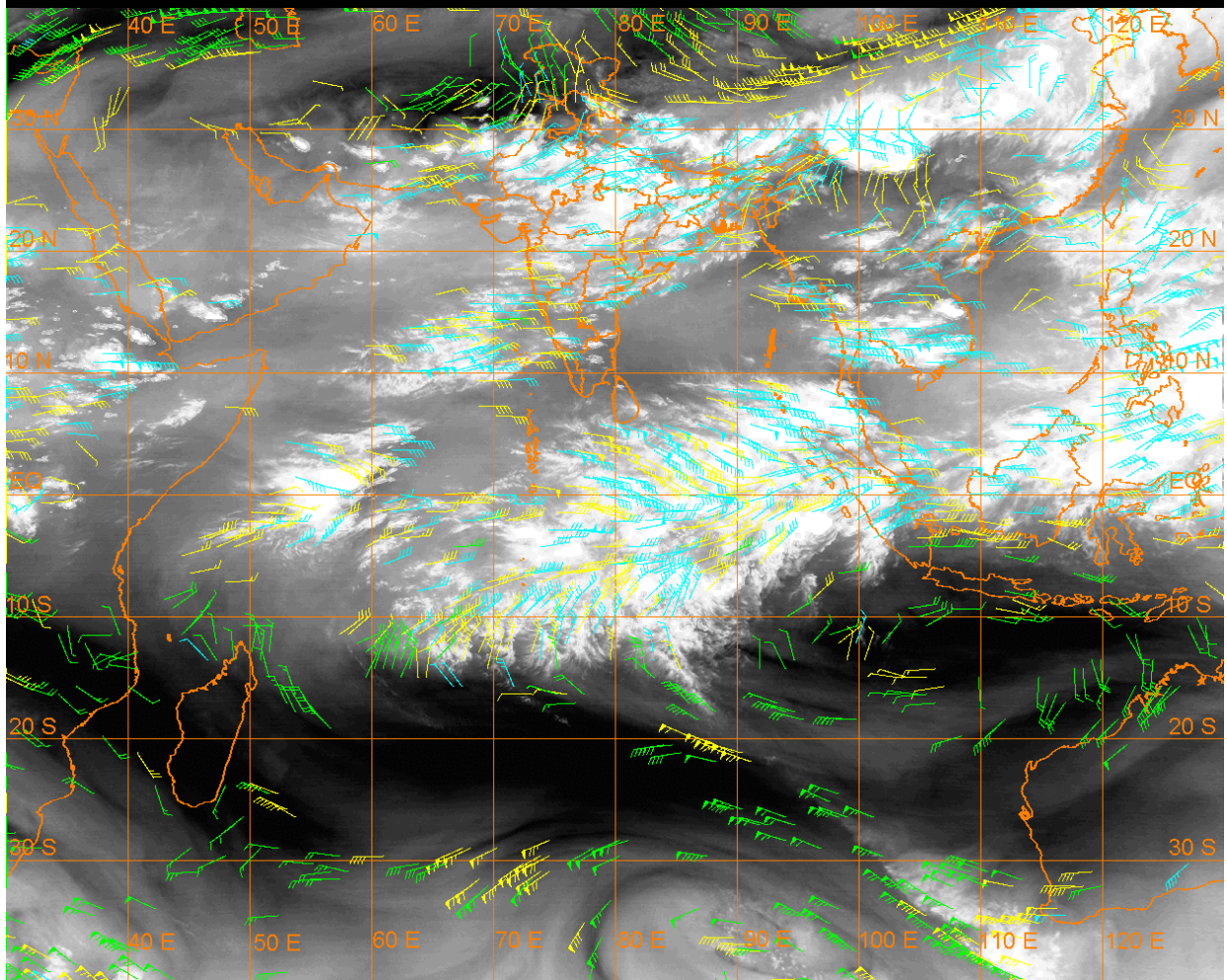
20 Kt

50 Kt

100-250 hPa

251-350 hPa

351-500 hPa



CLOUDS DESCRIPTION WITHIN INDIA:-

NORTH:-

SCT LOW/MED CLOUDS WITH EMBDD INT TO V INT CONVTN OVER UP SE HARY (.) SCT LOW/MED CLOUDS WITH EMBDD MOD TO INT CONVTN OVER NE HP W & NE UTRKND SW PJB DLH AND ISOL WK TO MOD CONVTN OVER LADAKH SE HP (.) SCT LOW/MED CLOUDS OVER J&K REST PJB WEST HARY (.)

EAST:-

SCT LOW/MED CLOUDS WITH EMBDD INT TO V INT CONVTN OVER S BHR JHRKND N ORS N SOUTH SHWB (.) SCT LOW/MED CLOUDS WITH EMBDD MOD TO INT CONVTN OVER N CHTGH SKM W ASSAM W ARUPR MEGHA N BD AND ISOL WK TO MOD CONVTN OVER S CHTGH S ORS (.) SCT LOW/MED CLOUDS OVER NORTH SHWB REST NE STATES (.)

WEST:-

SCT LOW/MED CLOUDS WITH EMBDD INT TO V INT CONVTN OVER N RAJ N MP (.) SCT LOW/MED CLOUDS WITH EMBDD MOD TO INT CONVTN OVER REST MP S RAJ N GUJ MADHYA MAHA VID AND WK TO MOD CONVTN OVER S GUJ REST MAHA (.) SCT LOW/MED CLOUDS OVER GOA (.)

SOUTH:-

SCT LOW/MED CLOUDS WITH EMBDD INT TO V INT CONVTN OVER NE TN (.) SCT LOW/MED CLOUDS WITH EMBDD MOD TO INT CONVTN OVER KRNTK S COTL AP E RYLSM N KER LKSDP ILS NICOBAR ILS AND ISOL WK TO MOD CONVTN OVER N COTL AP TLNGN W RYLSM LKSDP & NICOBAR ILS (.) SCT LOW/MED CLOUDS OVER S KER S TN & ANDAMAN (.)

ARABIAN SEA:-

SCT LOW/MED CLOUDS WITH EMBDD MOD TO INT CONVTN OVER SE ARSEA & LKSDP ILS AREA (.) SCT LOW/MED CLOUDS WITH EMBDD ISOL WK TO MOD CONVTN OVER NORTH ADJ CENTRAL ARSEA GULF OF CAMBAY MALDIVES AREA & COMORIN AREA (.)

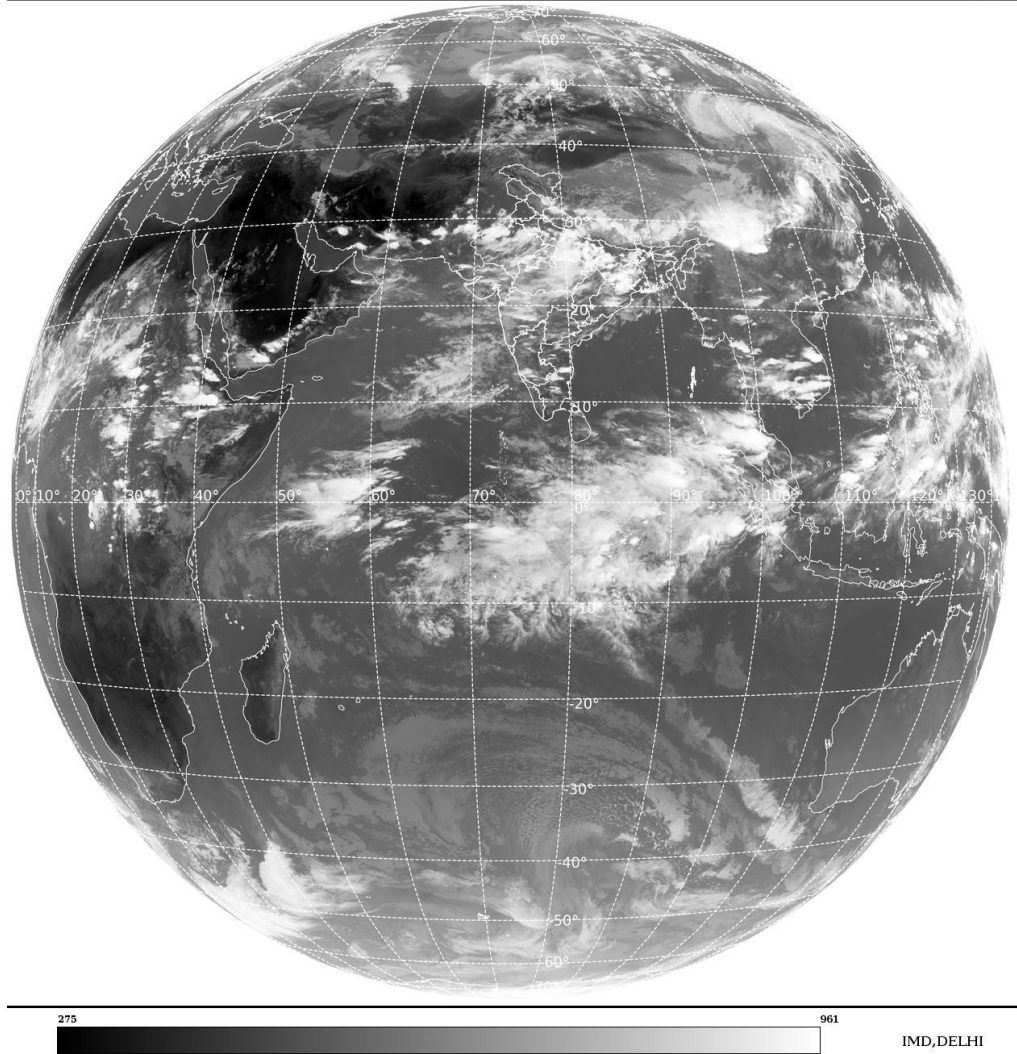
BAY OF BENGAL & ANDAMAN SEA:-

SCT LOW/MED CLOUDS WITH EMBDD INT TO V INT CONVTN OVER S ANDAMAN SEA (.) SCT LOW/MED CLOUDS WITH EMBDD MOD TO INT CONVTN OVER NORTH ADJ SW BAY (.) SCT LOW/MED CLOUDS WITH EMBDD ISOL WK TO MOD CONVTN OVER WC BAY (.)

CLOUDS DESCRIPTION OUTSIDE INDIA:-

SAT : INSAT-3DR IMG
Thermal Infrared1 Count 10.8 um
LIB FULL DISK

09-08-2024/(1145 to 1212) GMT
09-08-2024/(1715 to 1742) IST



SCT LOW/MED CLOUDS WITH EMBDD MOD TO INT CONVTN OVER MALDIVES PAK NEPAL BHUTAN TIBET CHINA MYANMAR THAILAND GULF OF THAILAND VIETNAM SUMATRA STR OF MALACCA MALAY PENISULA BORNEO SOUTH CHINA SEA JAVA ILS CELEBES ILS & SEA PHILIPPINES TAIWAN EAST CHINA SEA YELLOW SEA AND OVER INDIAN OCEAN BET LAT 5.0N TO 16.0S LONG 50.0E TO 100.0E (.)

TOO 09/1830 HRS IST=

NNNN

LEGEND:-

REGION	NORTH	J&K HP PJB HARY DLH UP UTRKND
	EAST	BHR JHRKND CHTGH OR WB SKM NORTH- EAST STATES
	WEST	RAJ MP GUJ MAHA GOA
	SOUTH	TLNGN AP KRNTK KER TN LKSDP ANDAMAN & NICOBAR ILS
	ISOL	ISOLATED (LESS THAN 25%)
	SCT	SCATTERED (25 TO 50%)

CLOUD DISTRIBUTION	BKN	BROKEN (51 TO 75%)	
	SLD	SOLID (GREATER THAN 75%)	
CLOUDS TOP TEMPERATURE	CTT	CLOUD TOP TEMPERATURE	
CONVECTION	WK CONV TN	WEAK CONVECTION (CTT GREATER THAN -25°C)	
	MOD CONV TN	MODERATE CONVECTION (CTT BETWEEN -25°C TO -40°C)	
	INT CONV TN	INTENSE CONVECTION (CTT BETWEEN -41°C TO -70°C)	
	V INT CONV TN	VERY INTENSE CONVECTION (CTT LESS THAN -70°C)	
METEOROLOGICAL SUB- DIVISIONS, STATES & UNION TERITORIES	ARUPR	ARUNACHAL PRADESH	
	BHR	BIHAR	
	CHTGH	CHHATTISGARH	
	COTL AP	COASTAL ANDHRA PRADESH	
	COTL KRNTK	COASTAL KARNATAKA	
	COTL ORS	COASTAL ORISSA	
	GUJ	GUJARAT	
	GWB	GANGETIC WEST BENGAL	
	HARY	HARYANA	
	DLH	DELHI	
	HP	HIMACHAL PRADESH	
	J&K	JAMMU AND KASHMIR	
	JHRKND	JHARKHAND	
	KER	KERALA	
	KKN	KONKAN	
	LKSDP	LAKSHADWEEP	
	M MAHA	MADHYA MAHARASHTRA	
	MAHA	MAHARASHTRA	
	MANI	MANIPUR	
	MEGHA	MEGHALAYA	
	MIZO	MIZORAM	
	MP	MADHYA PRADESH	
		MRTHWD	MARATHWADA
		NAGA	NAGALAND
N COTL AP		NORTH COASTAL ANDHRA PRADESH	
NIK		NORTH INTERIOR KARNATAKA	
ORS		ORISSA	
PJB		PUNJAB	
RAJ		RAJASTHAN	
RYLSM		RAYALASEEMA	
SAU & KUTCH		SAURASHTRA & KUTCH	
SHWB		SUB-HIMALAYAN WEST BENGAL	
SIK		SOUTH INTERIOR KARNATAKA	
SKM		SIKKIM	
TLNGN		TELANGANA	
TN		TAMIL NADU	

	TRP	TRIPURA
	UP	UTTAR PRADESH
	UTRKND	UTTARAKHAND
	VID	VIDHARBHA
	SHWB	SUB HIMALAYAN WEST BENGAL
	GWB	GANGETIC WEST BENGAL
	ARSEA	ARABIAN SEA
	ILS	ISLANDS
MISCELLANEOUS	ASSW	IN ASSOCIATION WITH
	ASSTD	ASSOCIATED
	LLC	LOW LEVEL CIRCULATION
	EMBDD	EMBEDDED
	N/HOOD	NEIGHBOURHOOD
	EXT	EXTREME