

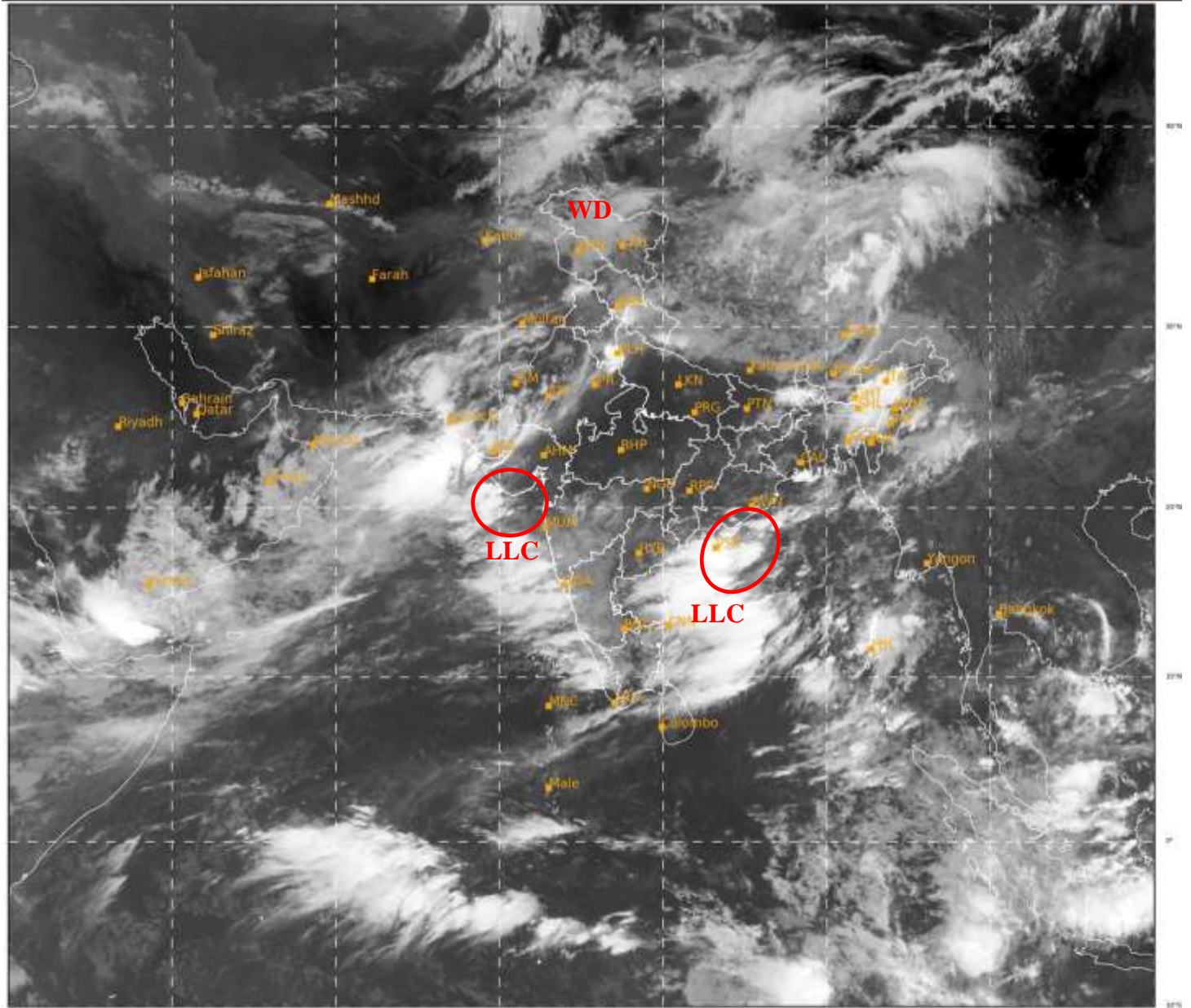


SATELLITE BULLETIN BASED ON SATELLITE IMAGERIES
AND PRODUCTS

13.07.2021 TIME 0300 UTC

SAT : INSAT-3D IMG
IMG_TIR1 10.8 um
LIC Mercator

13-07-2021/(0300 to 0326) GMT
13-07-2021/(0830 to 0856) IST



364

941

IMD, DELHI

TCIN50 DEMS 130300

SATELLITE BULLETIN BASED ON INSAT-3D PIC OF 130300 UTC (.)

REGION COVERED BETWEEN LAT 50.0°N TO 30.0°S AND LONG 40.0°E TO 125.0°E(.)

SATIENT FEATURES:-

LLC OVER WC BAY OFF NORTH AP-ADJ S ORS COASTS & N/HOOD:-

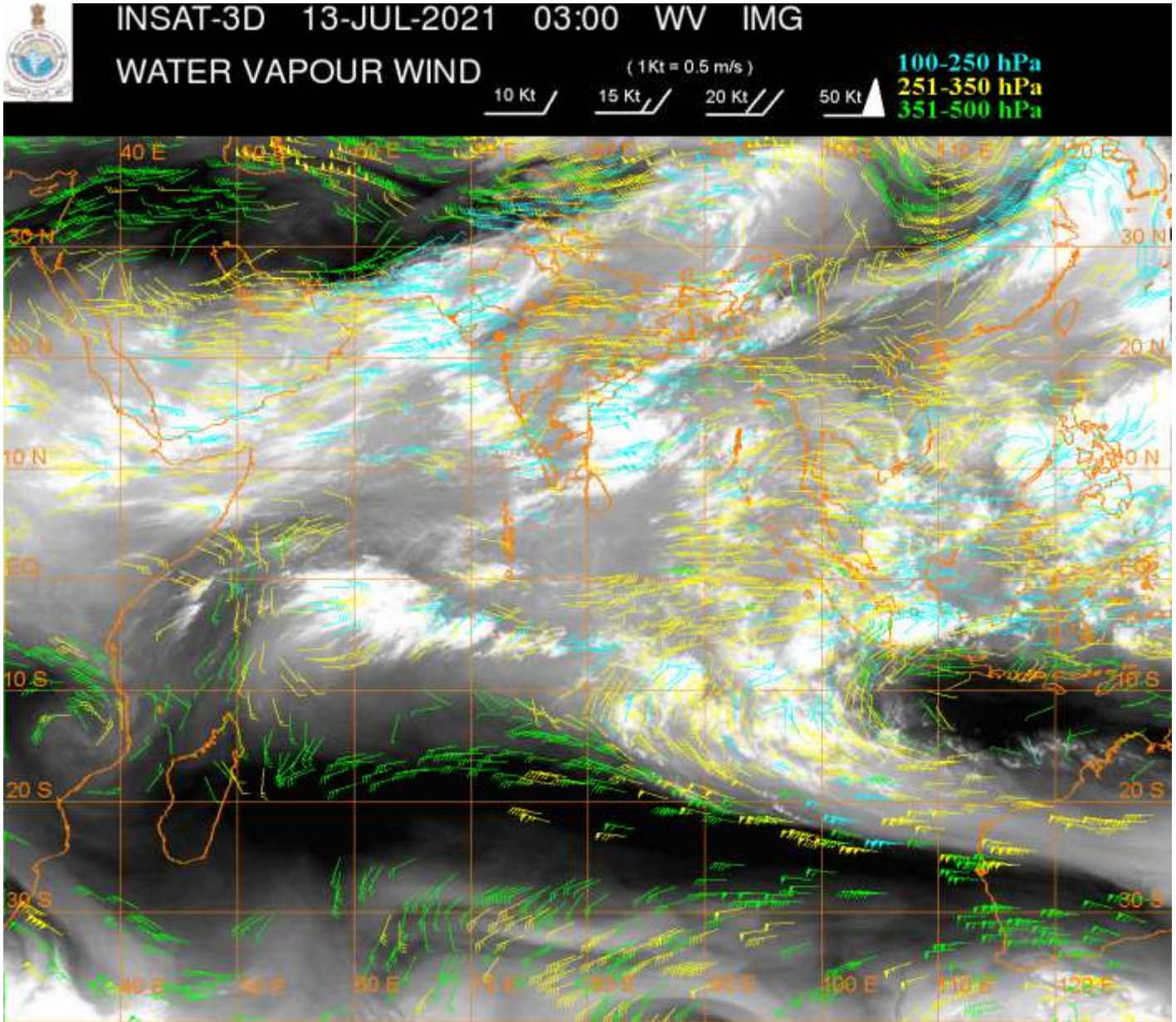
SCT LOW/MED CLOUDS WITH EMBDD INT TO V INT CONVTN OVER WC BAY OFF NORTH AP ADJ S ORS COAST & N/HOOD IN ASSW LOW LEVEL CIRCULATION (LLC) OVER THE AREA (.)

ANOTHER LLC OVER S GUJ COAST ADJ ARSEA & N/HOOD:-

SCT LOW/MED CLOUDS WITH EMBDD INT TO V INT CONVTN OVER S GUJ COAST ADJ ARSEA IN ASSW ANOTHER LOW LEVEL CIRCULATION (LLC) OVER THE AREA (.)

WESTERN DISTURBANCE (WD):-

SCT MULTYLAYERED CLOUDS OVER EXT N PAK J&K LADAKH & N/HOOD IN ASSW WD OVER THE AREA (.)



CLOUDS DESCRIPTION WITHIN INDIA:-

NORTH:-

SCT LOW/MED CLOUDS WITH EMBDD INT TO V INT CONVTN OVER SE HARY DLH (MINIMUM CTT MINUS 80 DEG C) (.) SCT LOW/MED CLOUDS WITH EMBDD MOD TO INT CONVTN OVER UTRKND AND WK TO MOD CONVTN OVER LADAKH J&K HP PJB REST HARY EXT NW UP (.) SCT LOW/MED CLOUDS OVER REST UP (.)

EAST:-

SCT LOW/MED CLOUDS WITH EMBDD MOD TO INT CONVTN OVER S ORS E BHR SHWB NE STATES & N BD (.) SCT LOW/MED CLOUDS WITH EMBDD ISOL WK TO MOD CONVTN OVER S CHTGH NE ORS JHRKND GWB SKM & S BD (.) SCT LOW/MED CLOUDS OVER N CHTGH NW ORS W BHR (.)

WEST:-

SCT LOW/MED CLOUDS WITH EMBDD MOD TO INT CONVTN OVER W ADJ E RAJ W GUJ (.) SCT LOW/MED CLOUDS WITH EMBDD ISOL WK TO MOD CONVTN OVER MAHA GOA (.) SCT LOW/MED CLOUDS OVER REST E RAJ E GUJ MP (.)

SOUTH:-

BKN LOW/MED CLOUDS WITH EMBDD INT TO V INT CONVTN OVER COTL AP (.) SCT LOW/MED CLOUDS WITH EMBDD MOD TO INT CONVTN OVER SE TLNGN RYLSM COTL KRNTK KER LKSDP ANDAMAN & NICOBAR ILS (.) SCT LOW/MED CLOUDS WITH EMBDD WK TO MOD CONVTN OVER REST TKNGN REST KRNTK TN (.)

ARABIAN SEA:-

SCT LOW/MED CLOUDS WITH EMBDD INT TO V INT CONVTN OVER NORTH & EC ARSEA AND MOD TO INT CONVTN OVER SE ARSEA (.) SCT LOW/MED CLOUDS WITH EMBDD WK TO MOD CONVTN OVER WC ADJ SW ARSEA (.)

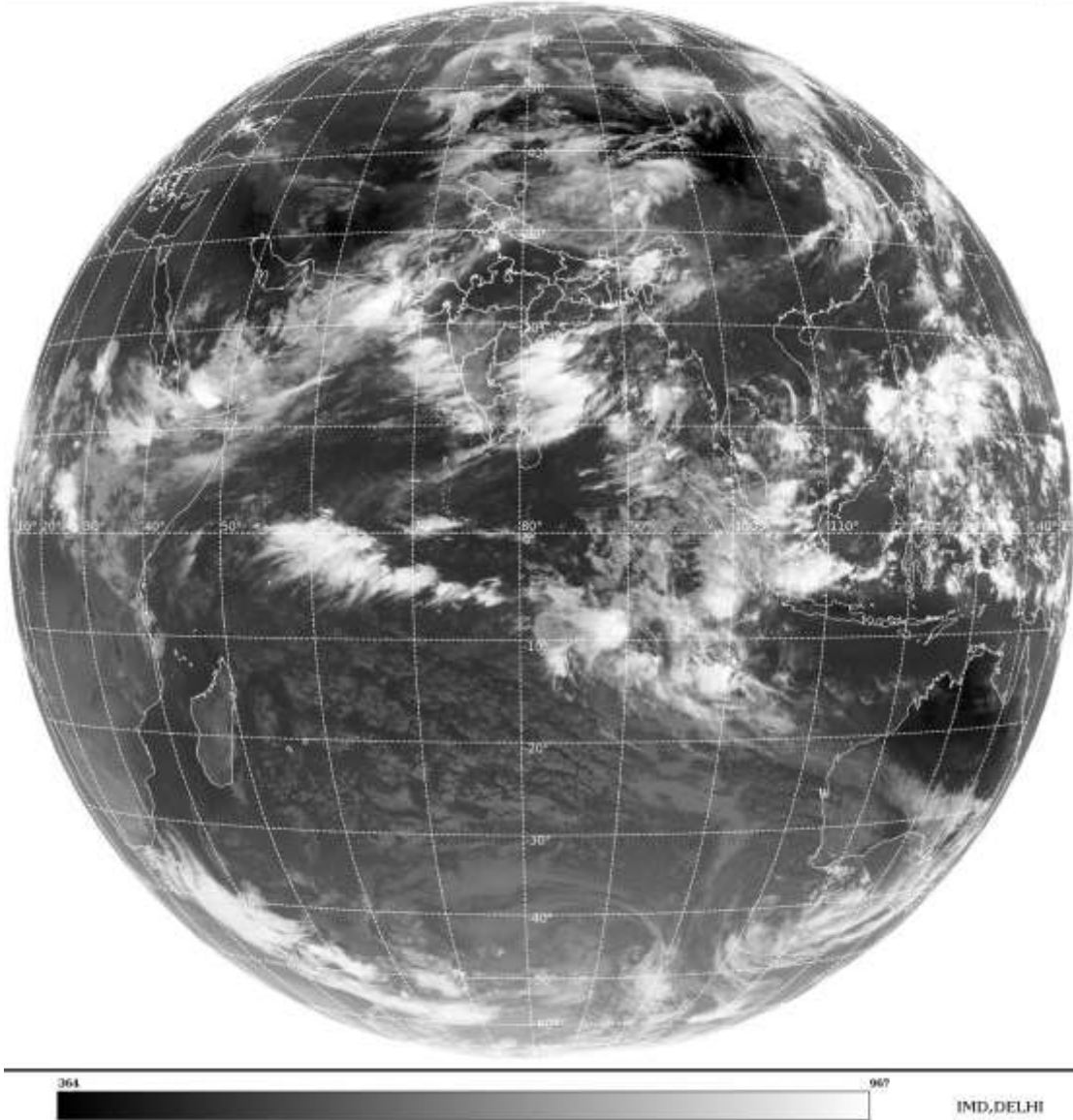
BAY OF BENGAL & ANDAMAN SEA:-

SCT TO BKN LOW/MED CLOUDS WITH EMBDD INT TO V INT CONVTN OVER WC ADJ SW BAY (.) SCT LOW/MED CLOUDS WITH EMBDD MOD TO INT CONVTN OVER REST BAY ANDAMAN SEA (.)

CLOUDS DESCRIPTION OUTSIDE INDIA:-

SAT : INSAT-3D IMG
Thermal Infrared1 Count 10.8 um
LIB FULL DISK

13-07-2021/(0300 to 0326) GMT
13-07-2021/(0830 to 0856) IST



SCT LOW/MED CLOUDS WITH EMBDD MOD TO INT CONVTN OVER N SRI LANKA PAK NEPAL BHUTAN TIBET CHINA N MYANMAR GULF OF THAILAND CAMBODIA SUMATRA STR OF MALACCA MALAY PENINSULA S CHINA SEA JAVA SEA CELEBES ILS & SEA PHILIPPINES YELLOW SEA E CHINA SEA AND OVER INDIAN OCEAN BET LAT 1.0N TO 7.0S LONG 55.0E TO 80.0E AND BET LAT 5.0N TO 20.0S LONG 80.0E TO 105.0E (.)

TOO 13/0950EF=

NNNN

LEGEND:-

REGION	NORTH	J&K HP PJB HARY DLH UP UTRKND
	EAST	BHR JHRKND CHTGH ORS WB SKMNORTH-EAST STATES
	WEST	RAJ MP GUJ MAHA GOA
	SOUTH	TLNGN AP KRNTK KER TN LKSDP ANDAMAN & NICOBAR ILS

CLOUD DISTRIBUTION	ISOL	ISOLATED (LESS THAN 25%)
	SCT	SCATTERED (25 TO 50%)
	BKN	BROKEN (51 TO 75%)
	SLD	SOLID (GREATER THAN 75%)
CLOUDS TOP TEMPERATURE	CTT	CLOUD TOP TEMPERATURE
CONVECTION	WK CONVTN	WEAK CONVECTION (CTT GREATER THAN -25°C)
	MOD CONVTN	MODERATE CONVECTION (CTT BETWEEN -25°C TO -40°C)
	INT CONVTN	INTENSE CONVECTION (CTT BETWEEN -41°C TO -70°C)
	V INT CONVTN	VERY INTENSE CONVECTION (CTT LESS THAN -70°C)
METEOROLOGICAL SUB-DIVISIONS, STATES & UNION TERRITORIES	ARUPR	ARUNACHAL PRADESH
	BHR	BIHAR
	CHTGH	CHHATTISGARH
	COTL AP	COASTAL ANDHRA PRADESH
	COTL KRNTK	COASTAL KARNATAKA
	COTL ORS	COASTAL ORISSA
	GUJ	GUJARAT
	GWB	GANGETIC WEST BENGAL
	HARY	HARYANA
	DLH	DELHI
	HP	HIMACHAL PRADESH
	J&K	JAMMU AND KASHMIR
	JHRKND	JHARKHAND
	KER	KERALA
	KKN	KONKAN
	LKSDP	LAKSHADWEEP
	M MAHA	MADHYA MAHARASHTRA
	MAHA	MAHARASHTRA
	MANI	MANIPUR
	MEGHA	MEGHALAYA
MIZO	MIZORAM	
MP	MADHYA PRADESH	

	MRTHWD	MARATHWADA
	NAGA	NAGALAND
	N COTL AP	NORTH COASTAL ANDHRA PRADESH
	NIK	NORTH INTERIOR KARNATAKA
	ORS	ORISSA
	PJB	PUNJAB
	RAJ	RAJASTHAN
	RYLSM	RAYALASEEMA
	SAU & KUTCH	SAURASHTRA & KUTCH
	SHWB	SUB-HIMALAYAN WEST BENGAL
	SIK	SOUTH INTERIOR KARNATAKA
	SKM	SIKKIM
	TLNGN	TELANGANA
	TN	TAMIL NADU
	TRP	TRIPURA
	UP	UTTAR PRADESH
	UTRKN D	UTTARAKHAND
	VID	VIDHARBHA
	SHWB	SUB HIMALAYAN WEST BENGAL
	GWB	GANGETIC WEST BENGAL
	ARSEA	ARABIAN SEA
	ILS	ISLANDS
MISCELLANEOUS	ASSW	IN ASSOCIATION WITH
	ASSTD	ASSOCIATED
	LLC	LOW LEVEL CIRCULATION
	EMBDD	EMBEDDED
	N/HOOD	NEIGHBOURHOOD
	EXT	EXTREME