



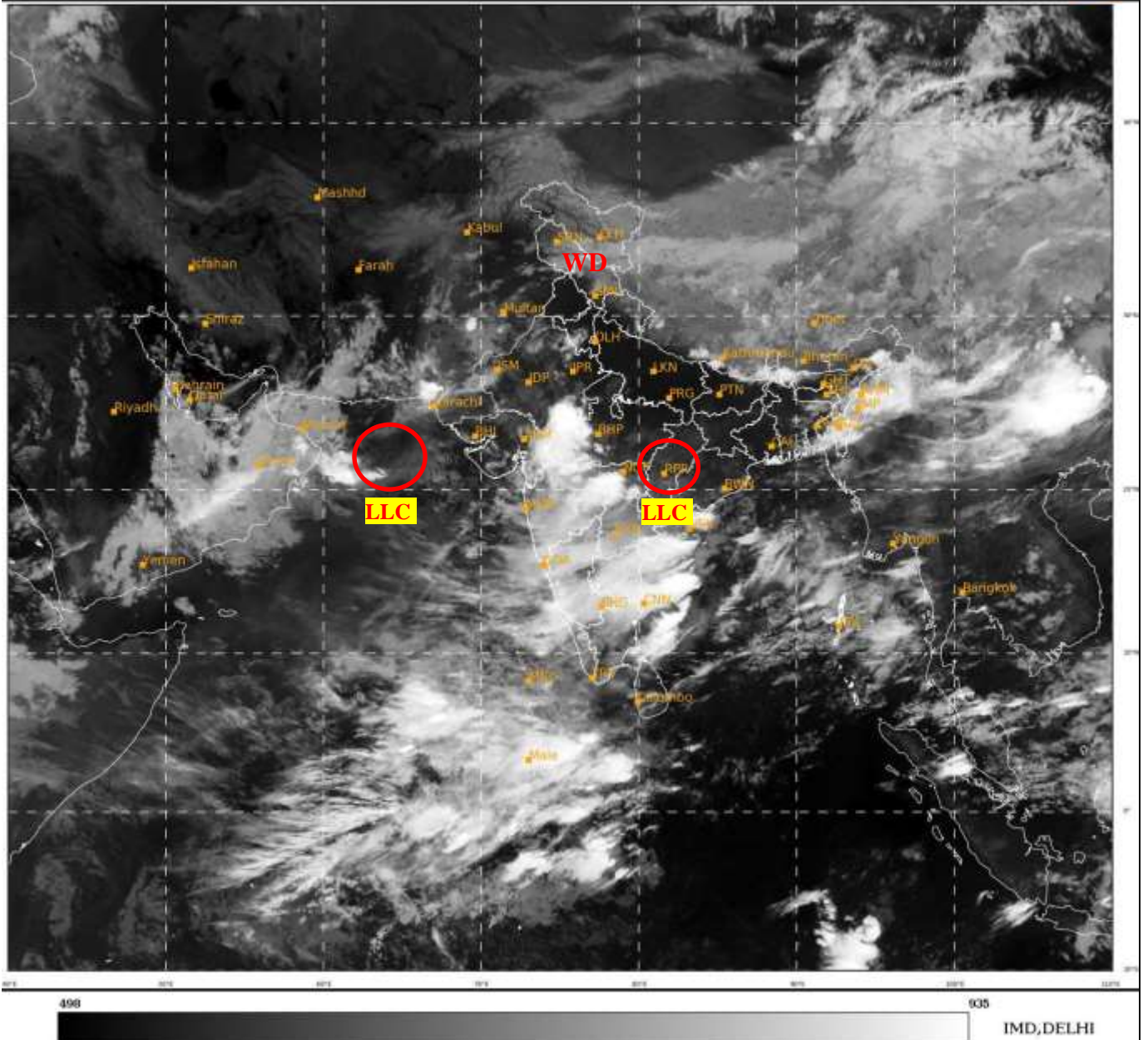
भारत मौसम विज्ञान विभाग  
पृथ्वी विज्ञान मंत्रालय  
India Meteorological Department  
Ministry of Earth Sciences



**SATELLITE BULLETIN BASED ON SATELLITE  
IMAGERIES AND PRODUCTS**  
**18.07.2022 TIME 0000 UTC**

SAT : INSAT-3D IMG  
IMG\_TIR1 10.8 um  
LIC Mercator

18-07-2022/(0000 to 0026) GMT  
18-07-2022/(0530 to 0556) IST



TCIN50 DEMS 180000

SATELLITE BULLETIN BASED ON INSAT-3D PIC OF 180000 UTC (.)

REGION COVERED BETWEEN LAT 50.0°N TO 30.0°S AND LONG 40.0°E TO 125.0°E (.)

**SALIENT FEATURES:-**

**LOW LEVEL CIRCULATION (LLC) OVER CENTRAL PARTS OF NORTH ARABIAN SEA:-**

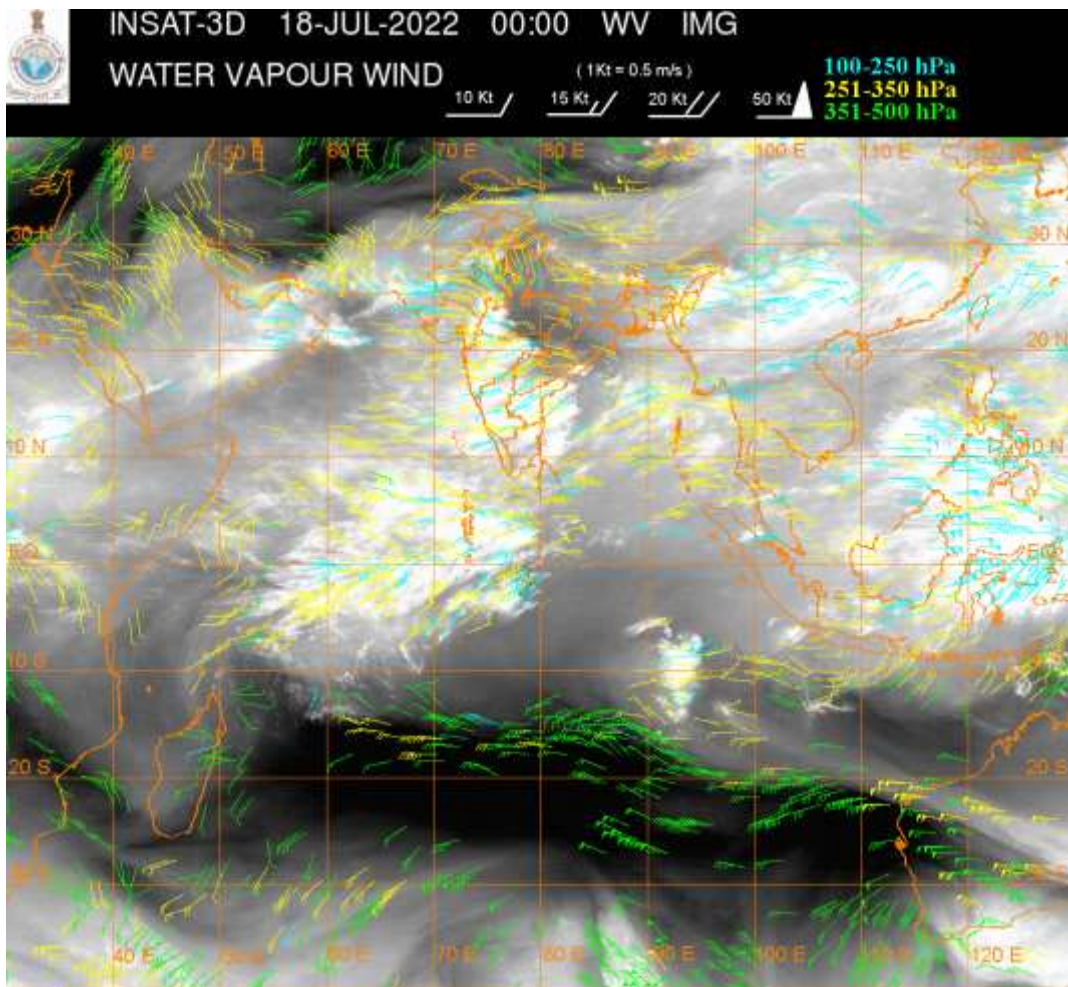
VORTEX (WML) OVER NE ARSEA & N/HOOD HAS WEAKENED INTO LOW LEVEL CIRCULATION (LLC) AND NOW LIES OVER CENTRAL PARTS OF NORTH ARABIAN SEA (.) ASSTD SCT LOW/MED CLOUDS WITH EMBDD INT TO V INT CONVTN OVER NW ARSEA (MINIMUM CTT MINUS 89 DEG C) AND WK TO MOD CONVTN OVER NE ARSEA (.)

**LLC OVER CHHATTISGARH AND N/HOOD:-**

LLC OVER CHTGH & N/HOOD (.) ASSTD SCT LOW/MED CLOUDS WITH EMBDD WK CONVTN OVER CHTGH AND N/HOOD (.)

## WESTERN DISTURBANCE:-

SCT MULTILAYERED CLOUDS OVER LADAKH J&K HP UTRKND TIBET ADJ CHINA AND N/HOOD IN ASSW WD OVER THE AREA (.)



## CLOUDS DESCRIPTION WITHIN INDIA:-

### NORTH:-

SCT LOW/MED CLOUDS WITH EMBDD MOD TO INT CONVTN OVER SE UTRKND (.) SCT LOW/MED CLOUDS WITH EMBDD WK TO MOD CONVTN OVER J&K LADAKH HP N UTRKND EXT N PJB S HARY NW UP (.) SCT LOW/MED CLOUDS OVER REST UTRKND N HARY SW UP (.)

### EAST:-

SCT TO BKN LOW/MED CLOUDS WITH EMBDD MOD TO INT CONVTN OVER EXT N BIHAR ADJ NEPAL SHWB E ARUPR ASSAM NAGA MANI MIZO TRP & SE BD (.) SCT LOW/MED CLOUDS WITH EMBDD WK TO MOD CONVTN OVER S CHTGH S ORS SKM W ARUPR MEGHA & REST BD (.) SCT LOW/MED CLOUDS OVER REST BHR JHRKND N CHTGH N ORS GWB (.)

### WEST:-

SCT TO BKN LOW/MED CLOUDS WITH EMBDD INT TO V INT CONVTN OVER SE RAJ W MP VID (MINIMUM CTT MINUS 93 DEG C) NORTH MADHYA MAHA (MINIMUM CTT MINUS 72 DEG C) (.) SCT TO BKN LOW/MED CLOUDS WITH EMBDD MOD TO INT CONVTN OVER E GUJ REST MAHA GOA (.) SCT LOW/MED CLOUDS WITH EMBDD WK TO MOD CONVTN OVER REST RAJ W GUJ (.) SCT LOW/MED CLOUDS OVER E MP (.)

### SOUTH:-

SCT TO BKN LOW/MED CLOUDS WITH EMBDD MOD TO INT CONVTN OVER KRNTK TLNGN COTL AP RYLSM N KER N TN LKSDP ILS (.) SCT LOW/MED CLOUDS WITH EMBDD WK TO MOD CONVTN OVER S KER S TN ANDAMAN & NICOBAR ILS (.)

### ARABIAN SEA:-

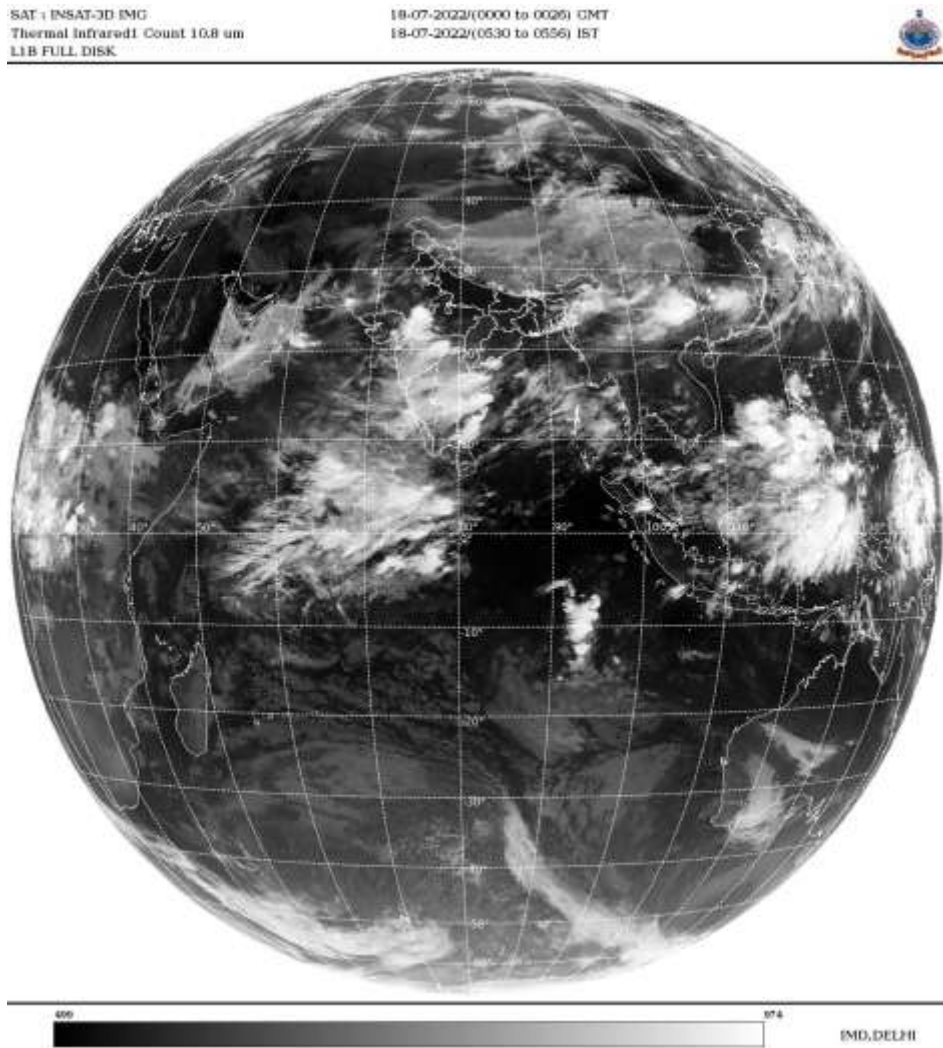
SCT TO BKN LOW/MED CLOUDS WITH EMBDD INT TO V INT CONVTN OVER NW ARSEA & SE ARSEA (.) SCT LOW/MED CLOUDS WITH EMBDD MOD TO INT CONVTN OVER EC ARSEA LKSDP ILS AREA (.) SCT LOW/MED CLOUDS WITH EMBDD WK TO MOD CONVTN OVER NE ARSEA GULF OF CAMBAY WC & SW ARSEA AND COMORIN AREA (.)



**BAY OF BENGAL & ANDAMAN SEA:-**

SCT TO BKN LOW/MED CLOUDS WITH EMBDD INT TO V INT CONVTN OVER WC BAY OFF AP COAST AND SW BAY OFF TN COAST (.) SCT LOW/MED CLOUDS WITH EMBDD MOD TO INT CONVTN OVER REST CENTRAL BAY REST SOUTH BAY AND ANDAMAN SEA (.) SCT LOW/MED CLOUDS WITH EMBDD WK TO MOD CONVTN OVER NORTH BAY (.)

**CLOUDS DESCRIPTION OUTSIDE INDIA:-**



SCT LOW/MED CLOUDS WITH EMBDD MOD TO INT CONVTN OVER SRI LANKA PALK STR GULF OF MANNAR MALDIVES PAK NEPAL BHUTAN TIBET CHINA YELLOW SEA E CHINA SEA TAIWAN MYANMAR THAILAND GULF OF THAILAND CAMBODIA LAOS VIETNAM SUMATRA STR OF MALACCA MALAYSIA BORNEO SOUTH CHINA SEA JAVA ILS & SEA CELEBES ILS & SEA PHILIPPINES SULU SEA AND OVER INDIAN OCEAN BET LAT 5.0N TO 10.0S LONG 50.0E TO 85.0E AND BET LAT 5.0S TO 16.0S LONG 90.0E TO 98.0E (.)

TOO 18/0715 HRS IST=

NNNN

**LEGEND:-**

REGION	NORTH	J&K HP PJB HARY DLH UP UTRKND
	EAST	BHR JHRKND CHTGH OR WB SKM NORTH- EAST STATES
	WEST	RAJ MP GUJ MAHA GOA
	SOUTH	TLNGN AP KRNTK KER TN LKSDP ANDAMAN & NICOBAR ILS

<b>CLOUD DISTRIBUTION</b>	<b>ISOL</b>	<b>ISOLATED (LESS THAN 25%)</b>	
	<b>SCT</b>	<b>SCATTERED (25 TO 50%)</b>	
	<b>BKN</b>	<b>BROKEN (51 TO 75%)</b>	
	<b>SLD</b>	<b>SOLID (GREATER THAN 75%)</b>	
<b>CLOUDS TOP TEMPERATURE</b>	<b>CTT</b>	<b>CLOUD TOP TEMPERATURE</b>	
<b>CONVECTION</b>	<b>WK CONVTN</b>	<b>WEAK CONVECTION (CTT GREATER THAN -25°C)</b>	
	<b>MOD CONVTN</b>	<b>MODERATE CONVECTION (CTT BETWEEN -25°C TO -40°C)</b>	
	<b>INT CONVTN</b>	<b>INTENSE CONVECTION (CTT BETWEEN -41°C TO -70°C)</b>	
	<b>V INT CONVTN</b>	<b>VERY INTENSE CONVECTION (CTT LESS THAN -70°C)</b>	
<b>METEOROLOGICAL SUB-DIVISIONS, STATES &amp; UNION TERRITORIES</b>	<b>ARUPR</b>	<b>ARUNACHAL PRADESH</b>	
	<b>BHR</b>	<b>BIHAR</b>	
	<b>CHTGH</b>	<b>CHHATTISGARH</b>	
	<b>COTL AP</b>	<b>COASTAL ANDHRA PRADESH</b>	
	<b>COTL KRNTK</b>	<b>COASTAL KARNATAKA</b>	
	<b>COTL ORS</b>	<b>COASTAL ORISSA</b>	
	<b>GUJ</b>	<b>GUJARAT</b>	
	<b>GWB</b>	<b>GANGETIC WEST BENGAL</b>	
	<b>HARY</b>	<b>HARYANA</b>	
	<b>DLH</b>	<b>DELHI</b>	
	<b>HP</b>	<b>HIMACHAL PRADESH</b>	
	<b>J&amp;K</b>	<b>JAMMU AND KASHMIR</b>	
	<b>JHRKND</b>	<b>JHARKHAND</b>	
	<b>KER</b>	<b>KERALA</b>	
	<b>KKN</b>	<b>KONKAN</b>	
	<b>LKSDP</b>	<b>LAKSHADWEEP</b>	
	<b>M MAHA</b>	<b>MADHYA MAHARASHTRA</b>	
	<b>MAHA</b>	<b>MAHARASHTRA</b>	
	<b>MANI</b>	<b>MANIPUR</b>	
	<b>MEGHA</b>	<b>MEGHALAYA</b>	
	<b>MIZO</b>	<b>MIZORAM</b>	
	<b>MP</b>	<b>MADHYA PRADESH</b>	
		<b>MRTHWD</b>	<b>MARATHWADA</b>
		<b>NAGA</b>	<b>NAGALAND</b>
<b>N COTL AP</b>		<b>NORTH COASTAL ANDHRA PRADESH</b>	
<b>NIK</b>		<b>NORTH INTERIOR KARNATAKA</b>	
<b>ORS</b>		<b>ORISSA</b>	
<b>PJB</b>		<b>PUNJAB</b>	
<b>RAJ</b>		<b>RAJASTHAN</b>	
<b>RYLSM</b>		<b>RAYALASEEMA</b>	
<b>SAU &amp; KUTCH</b>		<b>SAURASHTRA &amp; KUTCH</b>	
<b>SHWB</b>		<b>SUB-HIMALAYAN WEST BENGAL</b>	
<b>SIK</b>		<b>SOUTH INTERIOR KARNATAKA</b>	
<b>SKM</b>		<b>SIKKIM</b>	

	<b>TLNGN</b>	<b>TELANGANA</b>
	<b>TN</b>	<b>TAMIL NADU</b>
	<b>TRP</b>	<b>TRIPURA</b>
	<b>UP</b>	<b>UTTAR PRADESH</b>
	<b>UTRKND</b>	<b>UTTARAKHAND</b>
	<b>VID</b>	<b>VIDHARBHA</b>
	<b>SHWB</b>	<b>SUB HIMALAYAN WEST BENGAL</b>
	<b>GWB</b>	<b>GANGETIC WEST BENGAL</b>
	<b>ARSEA</b>	<b>ARABIAN SEA</b>
	<b>ILS</b>	<b>ISLANDS</b>
<b>MISCELLANEOUS</b>	<b>ASSW</b>	<b>IN ASSOCIATION WITH</b>
	<b>ASSTD</b>	<b>ASSOCIATED</b>
	<b>LLC</b>	<b>LOW LEVEL CIRCULATION</b>
	<b>EMBDD</b>	<b>EMBEDDED</b>
	<b>N/HOOD</b>	<b>NEIGHBOURHOOD</b>
	<b>EXT</b>	<b>EXTREME</b>