



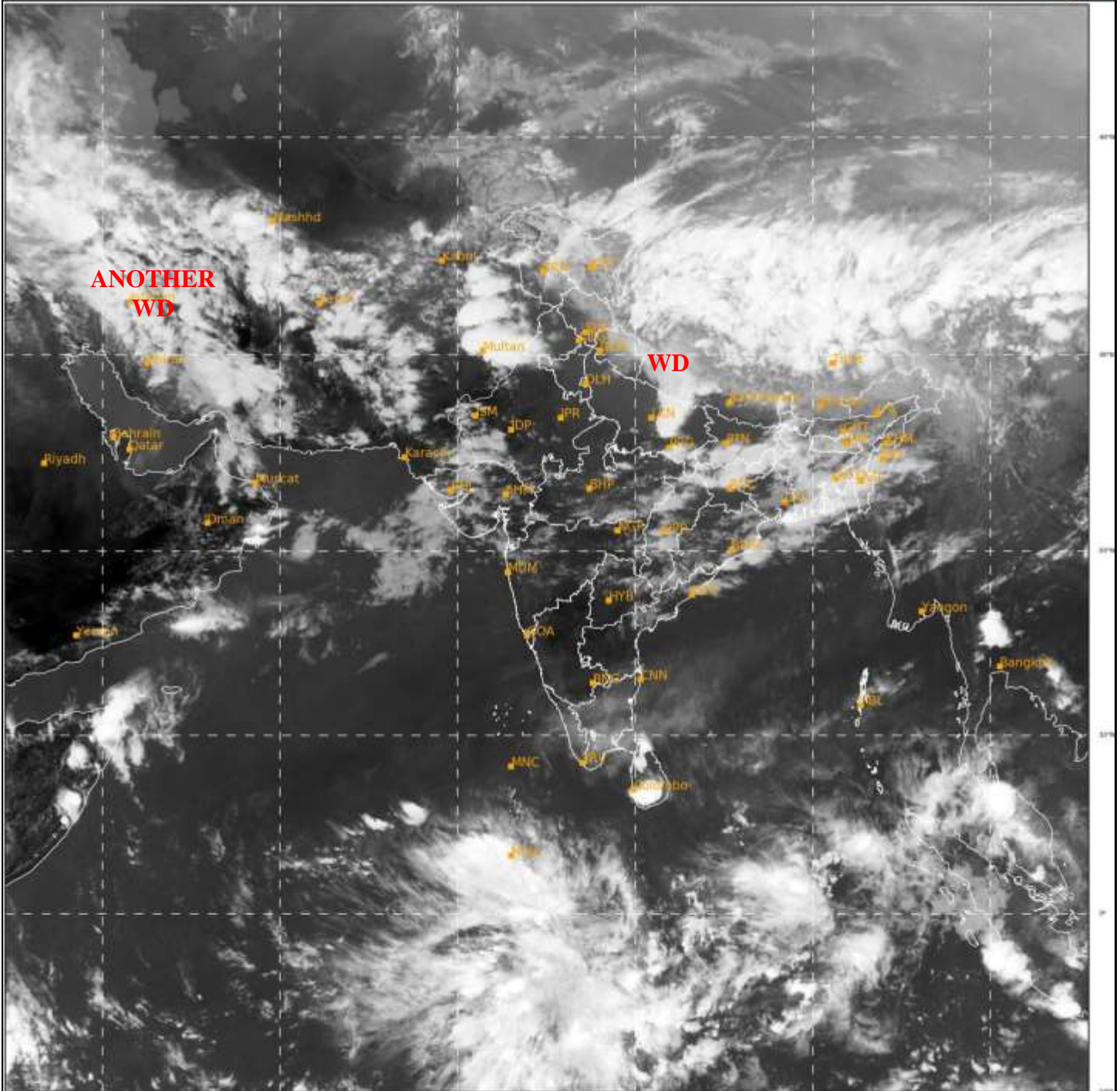
भारत मौसम विज्ञान विभाग
पृथ्वी विज्ञान मंत्रालय
India Meteorological Department
Ministry of Earth Sciences



**SATELLITE BULLETIN BASED ON SATELLITE
IMAGERIES AND PRODUCTS**
21.03.2023 TIME 1200 UTC

SAT : INSAT-3D IMG
IMG_TIR1 10.8 um
LIC Mercator

21-03-2023/(1200 to 1226) GMT
21-03-2023/(1730 to 1756) IST



412

941

IMD, DELHI

TCIN50 DEMS 211200

SATELLITE BULLETIN BASED ON INSAT-3D PIC OF 211200 UTC (.)

REGION COVERED BETWEEN LAT 50.0°N TO 35.0°S AND LONG 40.0°E TO 125.0°E (.)

SALIENT FEATURES:-

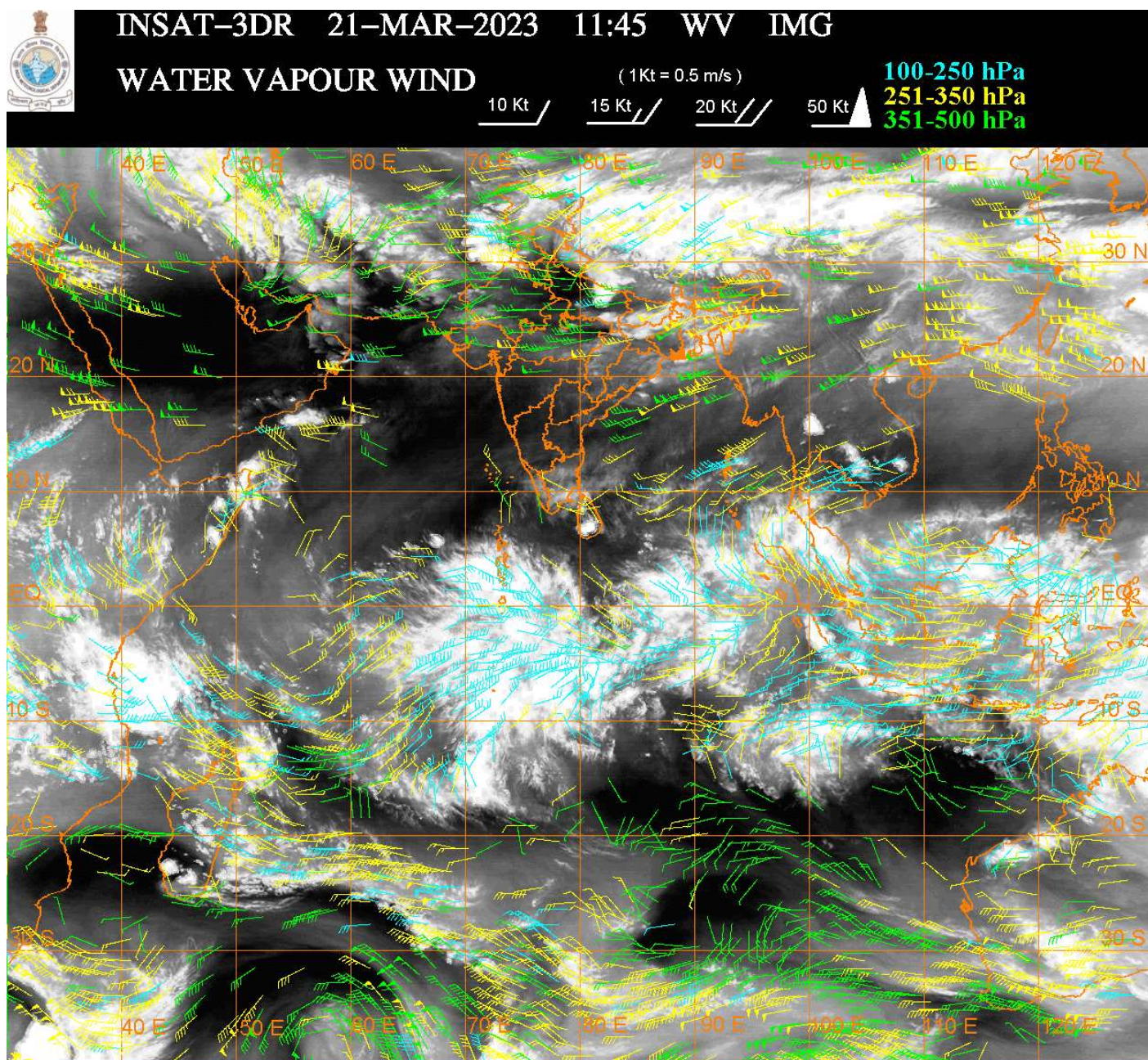
WESTERN DISTURBANCE (WD):-

SCT TO BKN MULTILAYERED CLOUDS OVER LADAKH J&K HP UTRKND E UP NEPAL TIBET
ADJ CHINA IN ASSW **WD** OVER THE AREA (.)

SCT TO BKN MULTILAYERED CLOUDS OVER IRAN & N/HOOD IN ASSW **ANOTHER WD** OVER
THE AREA (.)

THUNDERSTORM / CONVECTIVE ACTIVITY:-

MODERATE TO INTENSE THUNDERSTORM / CONVECTIVE ACTIVITY OBSERVED OVER E UP (MINIMUM CTT **MINUS 65 DEG CEL**) S BHR N JHRKND SHWB (MINIMUM CTT **MINUS 50 DEG CEL**) MEGHA MANI MIZO TRP (MINIMUM CTT **MINUS 50 DEG CEL**) S TN (MINIMUM CTT **MINUS 60 DEG CEL**) (.)



CLOUDS DESCRIPTION WITHIN INDIA:-

NORTH:-

BKN LOW/MED CLOUDS WITH EMBDD MOD TO INT CONVTN OVER E UP (MINIMUM CTT **MINUS 65 DEG CEL**) (.) SCT LOW/MED CLOUDS WITH EMBDD MOD TO INT CONVTN OVER LADAKH J&K UTRKND SW PJB AND ISOL WK TO MOD CONVTN OVER HP WC HARY (.) SCT LOW/MED CLOUDS OVER REST PJB REST HARY DLH W UP (.)

EAST:-

SCT TO BKN LOW/MED CLOUDS WITH EMBDD MOD TO INT CONVTN OVER N CHTGH N JHRKND BHR GWB SHWB SKM NE STATES BD AND WK TO MOD CONVTN OVER S CHTGH ORS (.) SCT LOW/MED CLOUDS OVER S JHRKND (.)

WEST:-

SCT LOW/MED CLOUDS WITH EMBDD ISOL MOD TO INT CONVTN OVER W RAJ W GUJ E MP AND ISOL WK TO MOD CONVTN OVER SE RAJ E GUJ SW MP MAHA (.) SCT LOW/MED CLOUDS OVER NE RAJ NW MP GOA (.)

SOUTH:-

SCT LOW/MED CLOUDS WITH EMBDD ISOL MOD TO INT CONVTN OVER S TN (MINIMUM CTT **MINUS 50 DEG CEL**) AND ISOL WK TO MOD CONVTN OVER TLNGN COTL AP (.) SCT LOW/MED CLOUDS OVER KRNTK RYLSM KER N TN LKSDP ILS ANDAMAN & NICOBAR ILS (.)

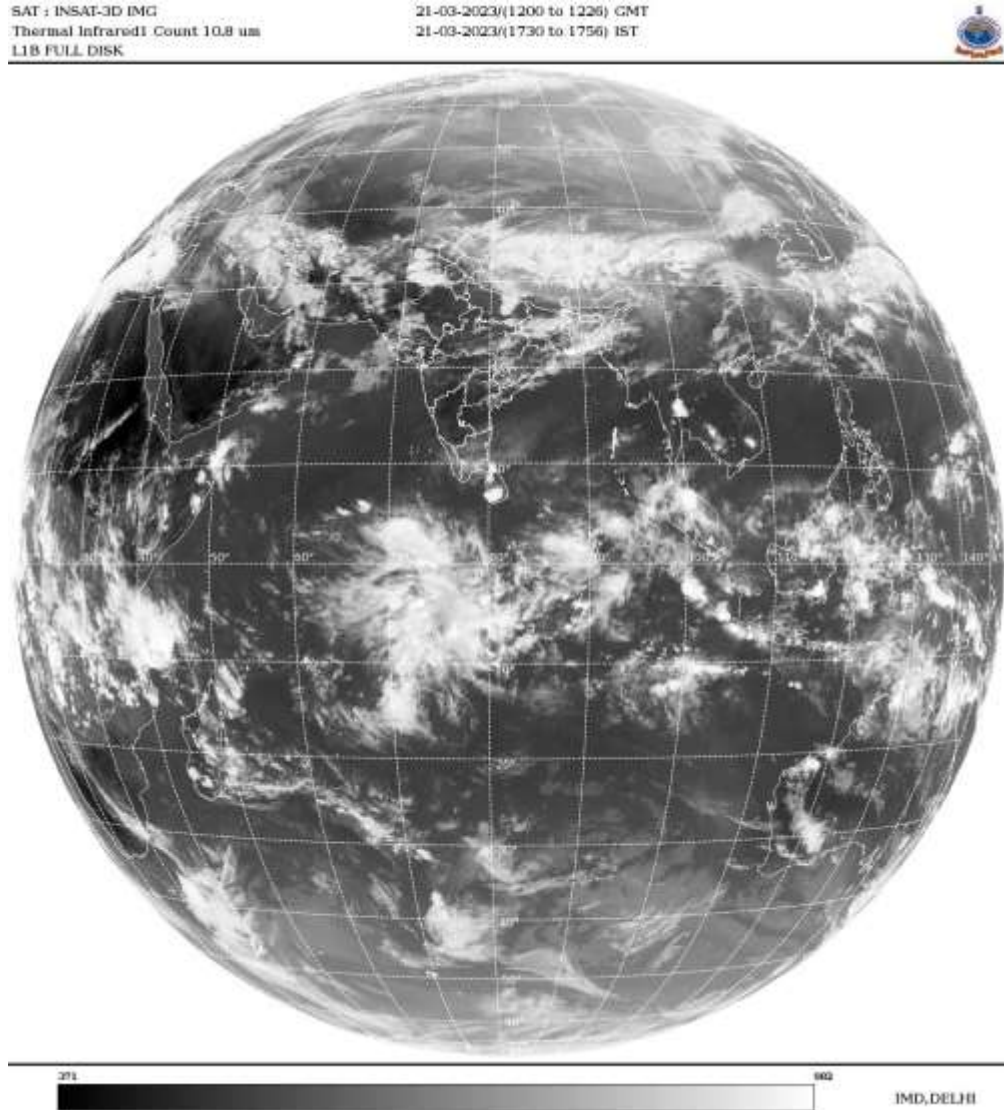
ARABIAN SEA:-

SCT LOW/MED CLOUDS WITH EMBDD MOD TO INT CONVTN OVER EXTREME WC ADJ SW ARSEA (.) SCT LOW/MED CLOUDS WITH EMBDD WK TO MOD CONVTN OVER NORTH ADJ CENTRAL ARSEA (.)

BAY OF BENGAL & ANDAMAN SEA:-

SCT LOW/MED CLOUDS WITH EMBDD MOD TO INT CONVTN OVER N BAY S ANDAMAN SEA AND ISOL WK TO MOD CONVTN OVER S BAY (.)

CLOUDS DESCRIPTION OUTSIDE INDIA:-



SCT LOW/MED CLOUDS WITH EMBDD MOD TO INT CONVTN OVER SRILANKA S MALDIVES PAK NEPAL BHUTAN TIBET CHINA MYANMAR THAILAND CAMBODIA N LAOS VIETNAM SUMATRA STR OF MALACCA MALAYSIA BORNEO SOUTH CHINA SEA JAVA ILS & SEA CELEBES ILS & SEA E CHINA SEA MADAGASCAR NORTH MOZAMBIQUE CHANNEL AND OVER INDIAN OCEAN BET LAT 5.0N TO 16.0S LONG 40.0E TO 110.0E AND BET LAT 20.0S TO 30.0S LONG 50.0E TO 70.0E (.)

TOO 21/1830 HRS IST=

NNNN

LEGEND:-

REGION	NORTH	J&K HP PJB HARY DLH UP UTRKND
	EAST	BHR JHRKND CHTGH OR WB SKM NORTH- EAST STATES
	WEST	RAJ MP GUJ MAHA GOA
	SOUTH	TLNGN AP KRNTK KER TN LKSDP ANDAMAN & NICOBAR ILS

CLOUD DISTRIBUTION	ISOL	ISOLATED (LESS THAN 25%)	
	SCT	SCATTERED (25 TO 50%)	
	BKN	BROKEN (51 TO 75%)	
	SLD	SOLID (GREATER THAN 75%)	
CLOUDS TOP TEMPERATURE	CTT	CLOUD TOP TEMPERATURE	
CONVECTION	WK CONVTN	WEAK CONVECTION (CTT GREATER THAN -25°C)	
	MOD CONVTN	MODERATE CONVECTION (CTT BETWEEN -25°C TO -40°C)	
	INT CONVTN	INTENSE CONVECTION (CTT BETWEEN -41°C TO -70°C)	
	V INT CONVTN	VERY INTENSE CONVECTION (CTT LESS THAN -70°C)	
METEOROLOGICAL SUB- DIVISIONS, STATES & UNION TERRITORIES	ARUPR	ARUNACHAL PRADESH	
	BHR	BIHAR	
	CHTGH	CHHATTISGARH	
	COTL AP	COASTAL ANDHRA PRADESH	
	COTL KRNTK	COASTAL KARNATAKA	
	COTL ORS	COASTAL ORISSA	
	GUJ	GUJARAT	
	GWB	GANGETIC WEST BENGAL	
	HARY	HARYANA	
	DLH	DELHI	
	HP	HIMACHAL PRADESH	
	J&K	JAMMU AND KASHMIR	
	JHRKND	JHARKHAND	
	KER	KERALA	
	KKN	KONKAN	
	LKSDP	LAKSHADWEEP	
	M MAHA	MADHYA MAHARASHTRA	
	MAHA	MAHARASHTRA	
	MANI	MANIPUR	
	MEGHA	MEGHALAYA	
	MIZO	MIZORAM	
	MP	MADHYA PRADESH	
		MRTHWD	MARATHWADA
		NAGA	NAGALAND
N COTL AP		NORTH COASTAL ANDHRA PRADESH	
NIK		NORTH INTERIOR KARNATAKA	
ORS		ORISSA	
PJB		PUNJAB	
RAJ		RAJASTHAN	
RYLSM		RAYALASEEMA	
SAU & KUTCH		SAURASHTRA & KUTCH	
SHWB		SUB-HIMALAYAN WEST BENGAL	
SIK		SOUTH INTERIOR KARNATAKA	
SKM		SIKKIM	

	TLNGN	TELANGANA
	TN	TAMIL NADU
	TRP	TRIPURA
	UP	UTTAR PRADESH
	UTRKND	UTTARAKHAND
	VID	VIDHARBHA
	SHWB	SUB HIMALAYAN WEST BENGAL
	GWB	GANGETIC WEST BENGAL
	ARSEA	ARABIAN SEA
	ILS	ISLANDS
MISCELLANEOUS	ASSW	IN ASSOCIATION WITH
	ASSTD	ASSOCIATED
	LLC	LOW LEVEL CIRCULATION
	EMBDD	EMBEDDED
	N/HOOD	NEIGHBOURHOOD
	EXT	EXTREME