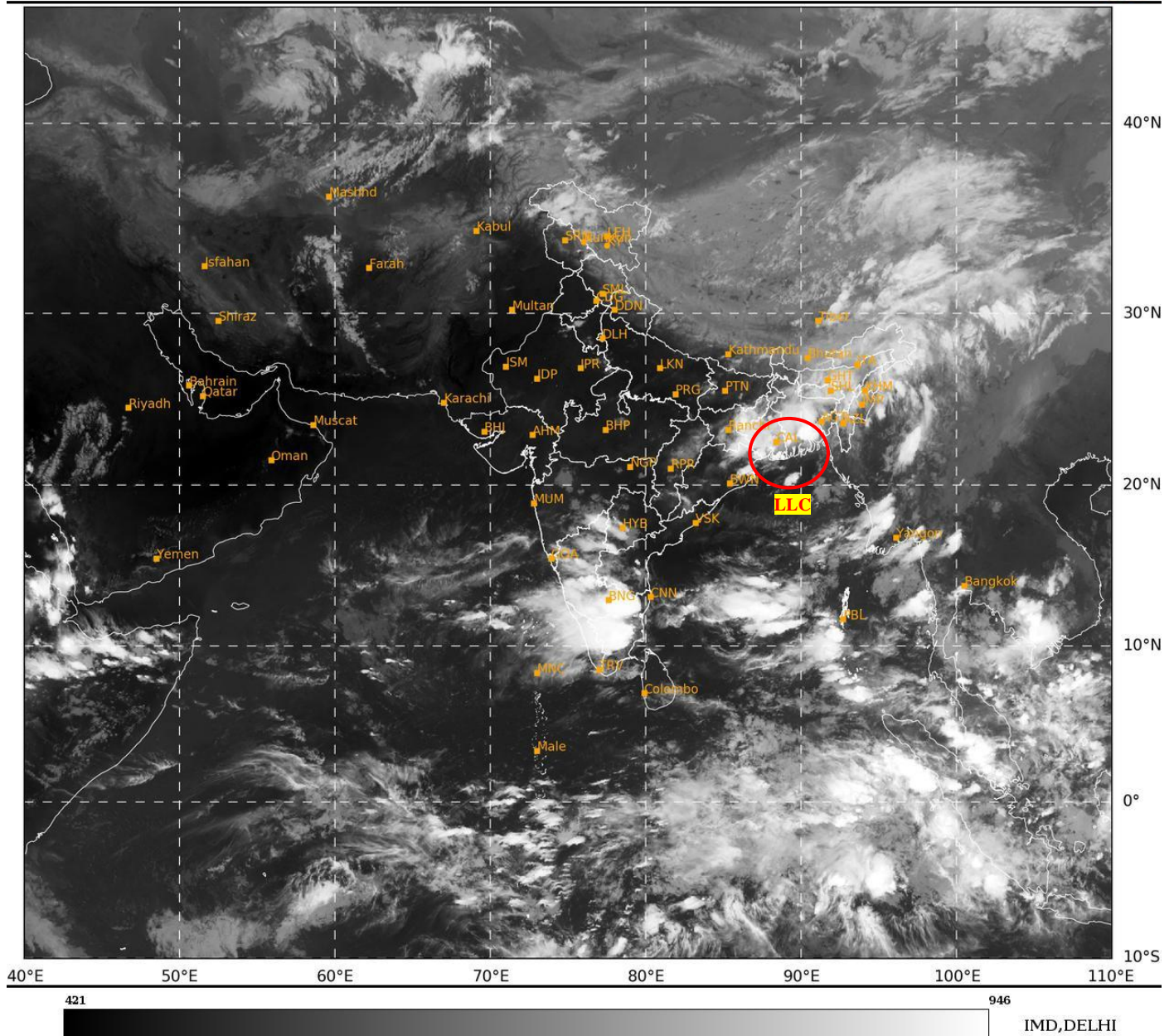




**SATELLITE BULLETIN BASED ON SATELLITE
IMAGERIES AND PRODUCTS**
04.10.2024 TIME 1500 UTC

SAT : INSAT-3DR IMG
IMG_TIR1 10.8 um
LIC Mercator

04-10-2024/(1445 to 1512) GMT
04-10-2024/(2015 to 2042) IST



TCIN50 DEMS 041500

SATELLITE BULLETIN BASED ON INSAT-3DR PIC OF 041445 UTC (.)

REGION COVERED BETWEEN LAT 50.0°N TO 35.0°S AND LONG 40.0°E TO 125.0°E (.)

SALIENT FEATURES:-

LLC OVER NORTH BAY ADJ GANGETIC WEST BENGAL & BANGLADESH COASTS:-

LOW LEVEL CIRCULATION (LLC) OVER NORTH BAY ADJ GWB & BD COASTS (.) ASSTD SCT TO BKN LOW/MED INT TO V INT CONVTN OVER E JHRKND NE ORS GWB BD (MINIMUM CTT MINUS 70-85 DEG CEL) AND MOD TO INT CONVTN OVER NORTH-EAST STATES NORTH BAY (.)

CONVECTIVE / THUNDERSTORM ACTIVITY:-

INTENSE TO VERY INTENSE CONVECTIVE / THUNDERSTORM ACTIVITY OBSERVED OVER E JHRKND NE ORS GWB SIK RYLSM KER TN ANDAMAN & NICOBAR ILS (MINIMUM CTT MINUS 70-85 DEG CEL) (.)

MODERATE TO INTENSE CONVECTIVE / THUNDERSTORM ACTIVITY OBSERVED OVER LADAKH NORTH-EAST STATES MRTHWD COTL KRNTK NIK W TLNGN S COTL AP LKSDP ILS (MINIMUM CTT MINUS 50-60 DEG CEL) (.)



INSAT-3DR 04-OCT-2024 14:45 WV IMG

WATER VAPOUR WIND

(1Kt = 0.5 m/s)

10 Kt

15 Kt

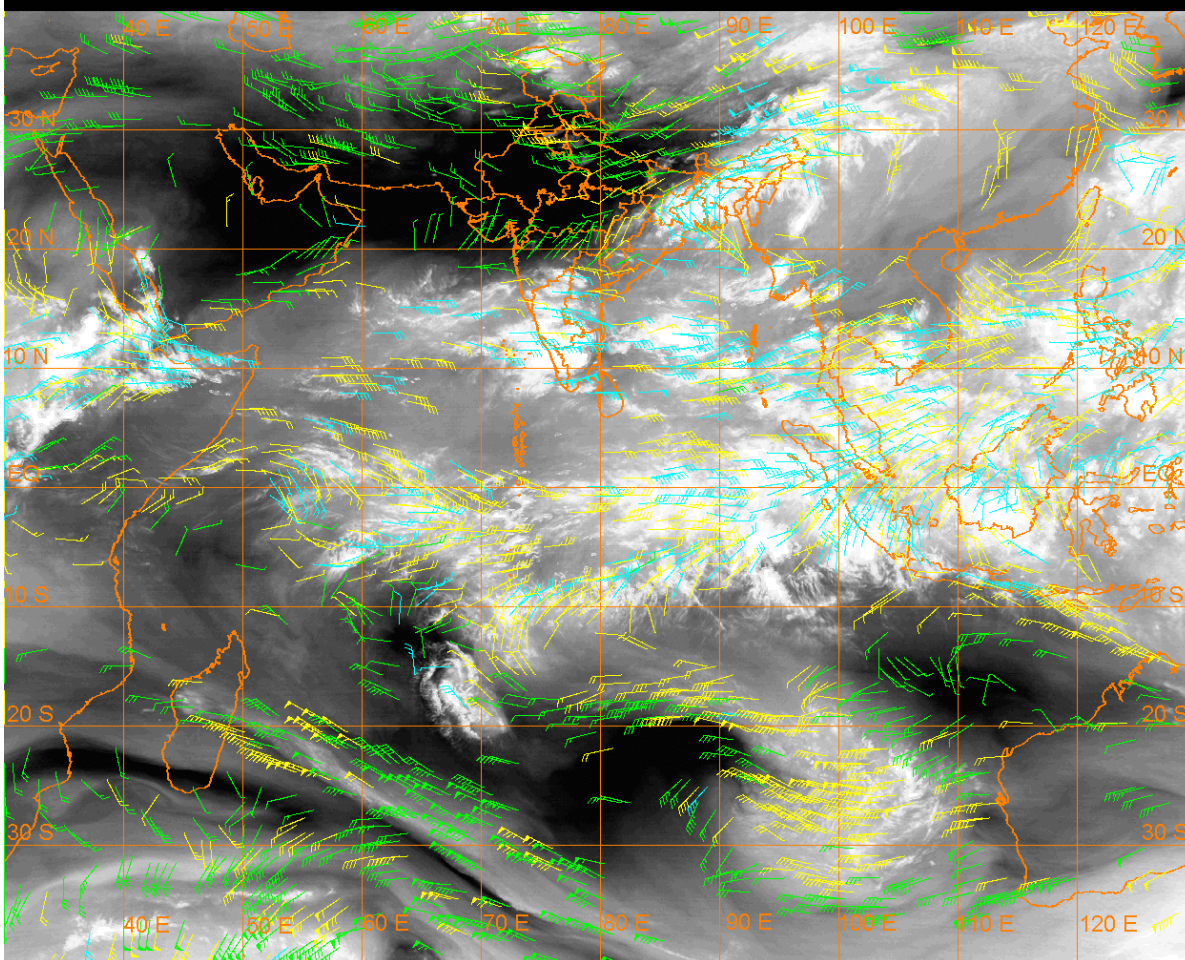
20 Kt

50 Kt

100-250 hPa

251-350 hPa

351-500 hPa



CLOUDS DESCRIPTION WITHIN INDIA:-

NORTH:-

SCT LOW/MED CLOUDS WITH EMBDD MOD TO INT CONVTN OVER LADAKH AND ISOL WK TO MOD CONVTN OVER J&K N HP N UTRKND W HARY UP (.) ISOL LOW/MED CLOUDS OVER S HP S UTRKND PJB E HARY DLH (.)

EAST:-

SCT LOW/MED CLOUDS WITH EMBDD INT TO V INT CONVTN OVER E JHRKND NE ORS GWB & BD (.) SCT LOW/MED CLOUDS WITH EMBDD MOD TO INT CONVTN OVER NORTH-EAST STATES AND ISOL WK TO MOD CONVTN OVER BHR W JHRKND CHTGH REST ORS SHWB SKM (.)

WEST:-

SCT LOW/MED CLOUDS WITH EMBDD MOD TO INT CONVTN OVER MRTHWD AND ISOL WK TO MOD CONVTN OVER N RAJ REST MAHA GOA (.) ISOL TO SCT LOW/MED CLOUDS OVER S RAJ MP GUJ (.)

SOUTH:-

SCT TO BKN LOW/MED CLOUDS WITH EMBDD INT TO V INT CONVTN OVER SIK RYLSM KER TN ANDAMAN & NICOBAR ILS (.) SCT LOW/MED CLOUDS WITH EMBDD MOD TO INT CONVTN OVER COTL KRNTK NIK W TLNGN S COTL AP LKSDP ILS (.) SCT LOW/MED CLOUDS OVER E TLNGN N COTL AP (.)

ARABIAN SEA:-

SCT LOW/MED CLOUDS WITH EMBDD MOD TO INT CONVTN OVER EC & SOUTH ARSEA AND LKSDP ILS AREA (.) SCT LOW/MED CLOUDS WITH EMBDD ISOL WK TO MOD CONVTN OVER WC & SW ARSEA & COMORIN AREA (.)

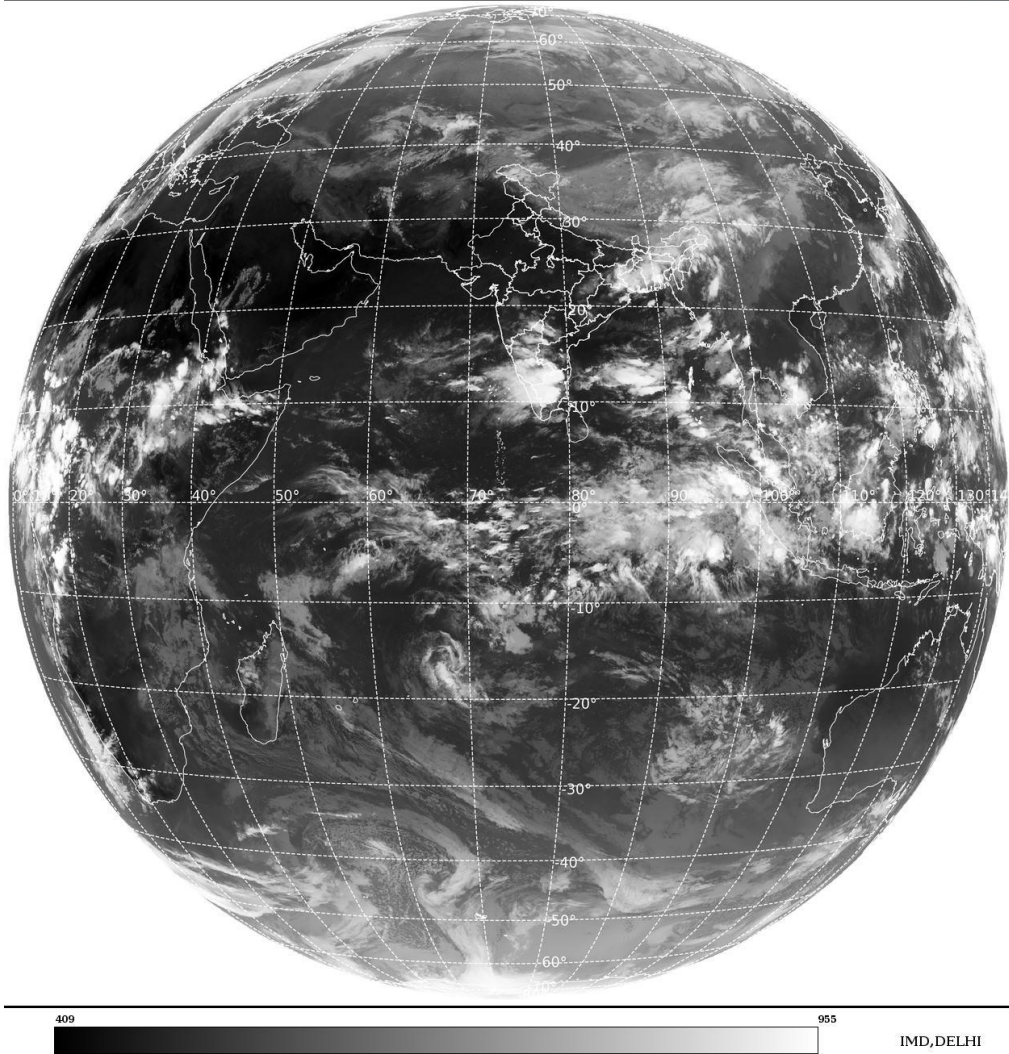
BAY OF BENGAL & ANDAMAN SEA:-

SCT LOW/MED CLOUDS WITH EMBDD INT TO V INT CONVTN OVER SOUTH BAY ANDAMAN SEA GULF OF MARTABAN & TENASSERIM COAST (MINIMUM **CTT MINUS 70-85 DEG CEL**) (.) SCT LOW/MED CLOUDS WITH EMBDD MOD TO INT CONVTN OVER NORTH & CENTRAL BAY AND ARAKAN COAST (.)

CLOUDS DESCRIPTION OUTSIDE INDIA:-

SAT : INSAT-3DR IMG
Thermal Infrared1 Count 10.8 um
L1B FULL DISK

04-10-2024/(1445 to 1512) GMT
04-10-2024/(2015 to 2042) IST



SCT LOW/MED CLOUDS WITH EMBDD MOD TO INT CONVTN OVER S SRI LANKA GULF OF MANNAR E NEPAL BHUTAN TIBET CHINA YELLOW SEA EAST CHINA SEA TAIWAN MYANMAR THAILAND GULF OF THAILAND CAMBODIA S VIETNAM SUMATRA STR OF MALACCA MALAYSIA BORNEO SOUTH CHINA SEA JAVA ILS & SEA CELEBES ILS & SEA PHILIPPINES SULU SEA AND OVER INDIAN OCEAN BET LAT 5.0N TO 20.0S LONG 50.0E TO 110.0E AND BET LAT 20.0S TO 33.0S LONG 90.0E TO 110.0E (.)

TOO 04/2115 HRS IST=

NNNN

LEGEND:-

REGION	NORTH	J&K HP PJB HARY DLH UP UTRKND
	EAST	BHR JHRKND CHTGH ORS WB SKM NORTH- EAST STATES
	WEST	RAJ MP GUJ MAHA GOA
	SOUTH	TLNGN AP KRNTK KER TN LKSDP ANDAMAN & NICOBAR ILS
CLOUD DISTRIBUTION	ISOL	ISOLATED (LESS THAN 25%)
	SCT	SCATTERED (25 TO 50%)
	BKN	BROKEN (51 TO 75%)
	SLD	SOLID (GREATER THAN 75%)
CLOUDS TOP TEMPERATURE	CTT	CLOUD TOP TEMPERATURE

CONVECTION	WK CONVNTN	WEAK CONVECTION (CTT GREATER THAN -25°C)	
	MOD CONVNTN	MODERATE CONVECTION (CTT BETWEEN -25°C TO -40°C)	
	INT CONVNTN	INTENSE CONVECTION (CTT BETWEEN -41°C TO -70°C)	
	V INT CONVNTN	VERY INTENSE CONVECTION (CTT LESS THAN -70°C)	
METEOROLOGICAL SUB- DIVISIONS, STATES & UNION TERITORIES	ARUPR	ARUNACHAL PRADESH	
	BHR	BIHAR	
	CHTGH	CHHATTISGARH	
	COTL AP	COASTAL ANDHRA PRADESH	
	COTL KRNTK	COASTAL KARNATAKA	
	COTL ORS	COASTAL ORISSA	
	GUJ	GUJARAT	
	GWB	GANGETIC WEST BENGAL	
	HARY	HARYANA	
	DLH	DELHI	
	HP	HIMACHAL PRADESH	
	J&K	JAMMU AND KASHMIR	
	JHRKND	JHARKHAND	
	KER	KERALA	
	KKN	KONKAN	
	LKSDP	LAKSHADWEEP	
	M MAHA	MADHYA MAHARASHTRA	
	MAHA	MAHARASHTRA	
	MANI	MANIPUR	
	MEGHA	MEGHALAYA	
	MIZO	MIZORAM	
	MP	MADHYA PRADESH	
		MRTHWD	MARATHWADA
		NAGA	NAGALAND
		N COTL AP	NORTH COASTAL ANDHRA PRADESH
		NIK	NORTH INTERIOR KARNATAKA
ORS		ORISSA	
PJB		PUNJAB	
RAJ		RAJASTHAN	
RYLSM		RAYALASEEMA	
SAU & KUTCH		SAURASHTRA & KUTCH	
SHWB		SUB-HIMALAYAN WEST BENGAL	
SIK		SOUTH INTERIOR KARNATAKA	
SKM		SIKKIM	
TLNGN		TELANGANA	
TN		TAMIL NADU	
TRP		TRIPURA	
UP		UTTAR PRADESH	
UTRKND		UTTARAKHAND	
VID		VIDHARBHA	

	SHWB	SUB HIMALAYAN WEST BENGAL
	GWB	GANGETIC WEST BENGAL
	ARSEA	ARABIAN SEA
	ILS	ISLANDS
MISCELLANEOUS	ASSW	IN ASSOCIATION WITH
	ASSTD	ASSOCIATED
	LLC	LOW LEVEL CIRCULATION
	EMBDD	EMBEDDED
	N/HOOD	NEIGHBOURHOOD
	EXT	EXTREME