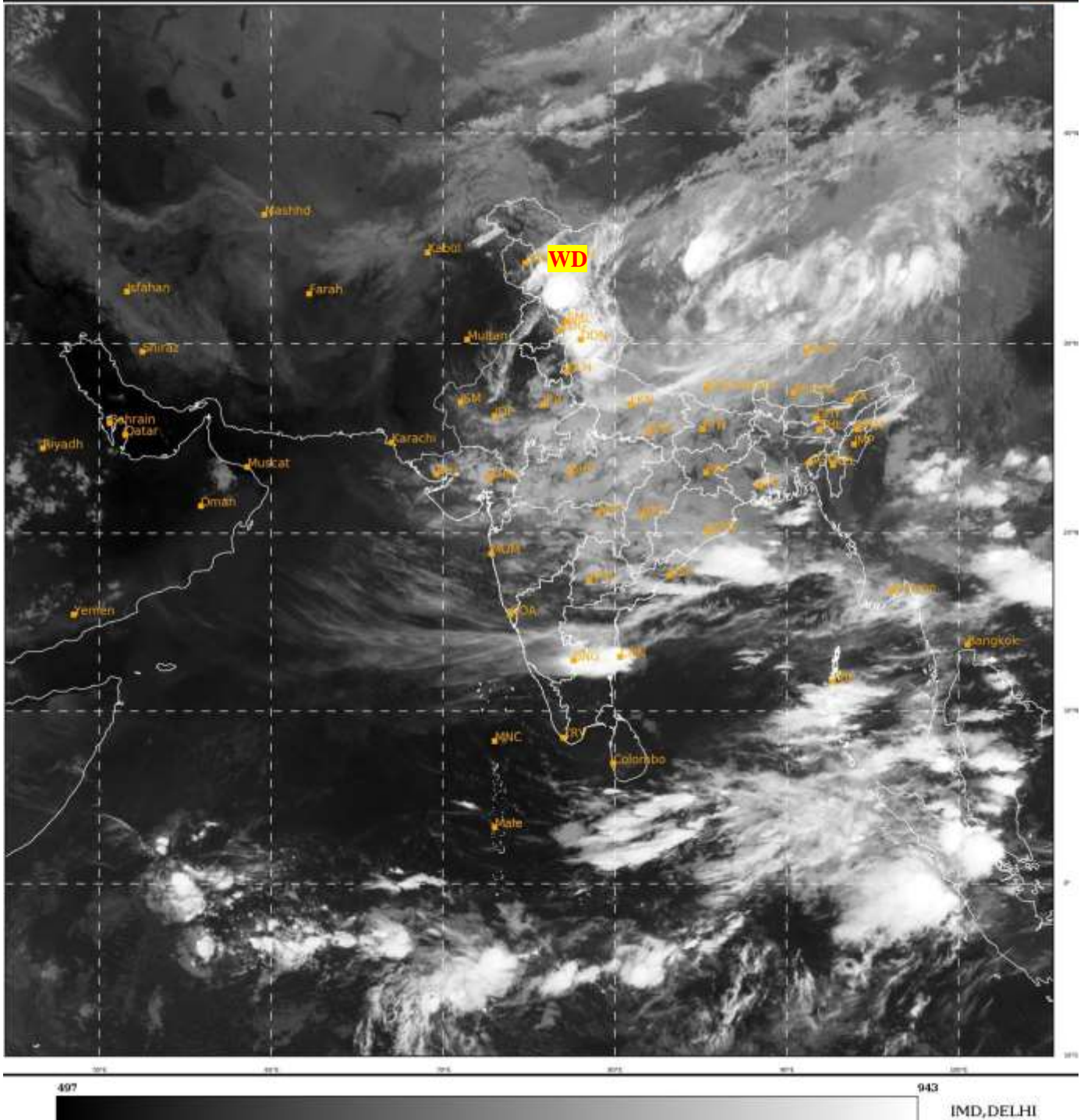




**SATELLITE BULLETIN BASED ON SATELLITE  
IMAGERIES AND PRODUCTS**  
**13.08.2023 TIME 2100 UTC**

SAT : INSAT-3D IMG  
IMG\_TIR1 10.8 um  
LIC Mercator

13-08-2023/(2130 to 2156) GMT  
14-08-2023/(0300 to 0326) IST



TCIN50 DEMS 132100

SATELLITE BULLETIN BASED ON INSAT-3D PIC OF 132130 UTC (.)

REGION COVERED BETWEEN LAT 50.0°N TO 35.0°S AND LONG 40.0°E TO 125.0°E (.)

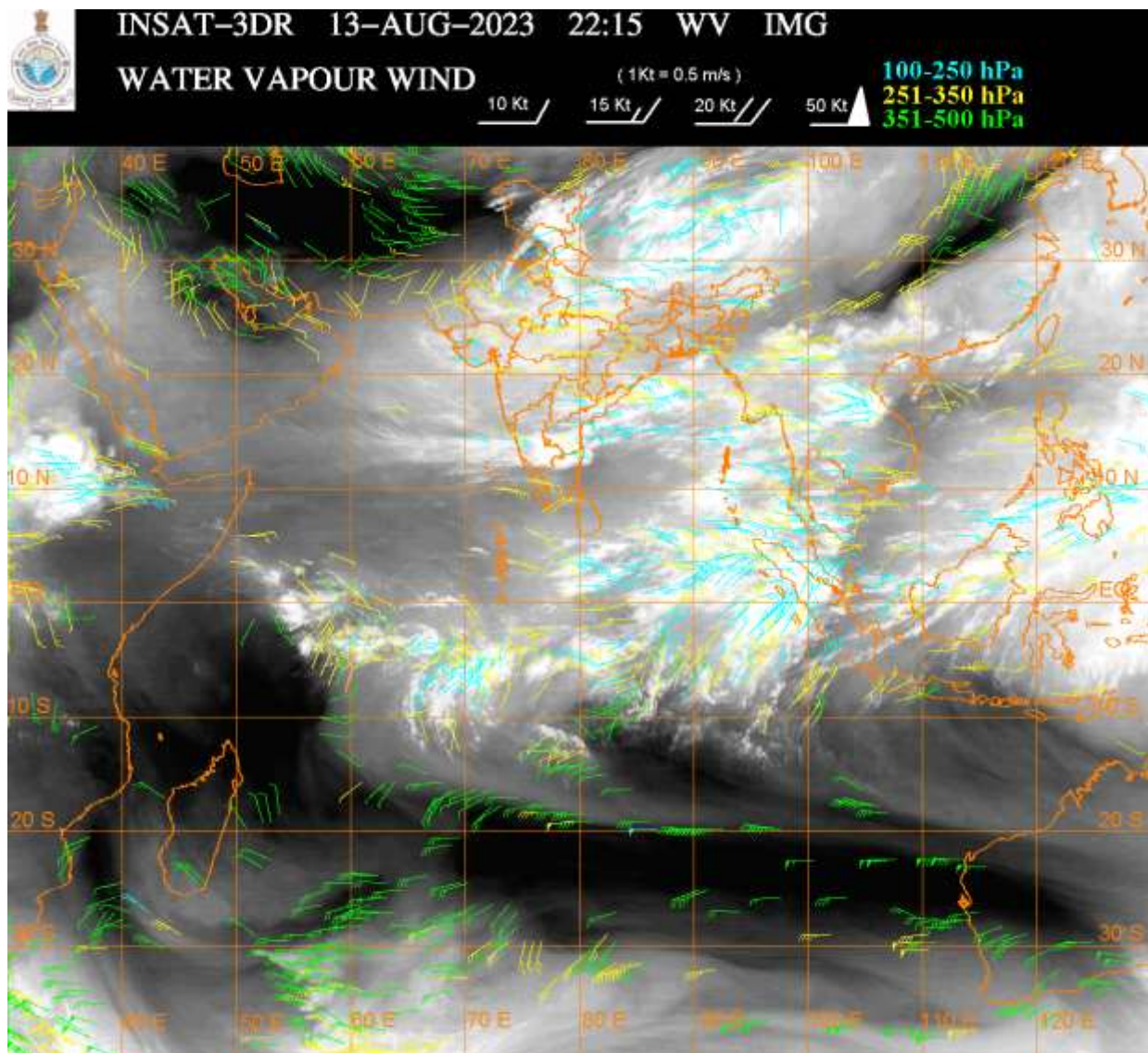
**SALIENT FEATURES:-**

**WESTERN DISTURBANCE (WD):-**

SCT MULTILAYERED CLOUDS OVER LADAKH J&K HP UTRKND TIBET ADJ CHINA IN ASSW  
**WD** OVER THE AREA (.)

**THUNDERSTORM / CONVECTIVE ACTIVITY:-**

INTENSE THUNDERSTORM / CONVECTIVE ACTIVITY OBSERVED OVER E LADAKH J&K HP  
UTRKND NW UP N TN ADJ SIK (.)



### **CLOUDS DESCRIPTION WITHIN INDIA:-**

#### **NORTH:-**

SCT TO BKN LOW/MED CLOUDS WITH EMBDD INT TO V INT CONVTN OVER J&K HP UTRKND ADJ NW UP (MINIMUM **CTT MINUS 93 DEG CEL**) (.) SCT LOW/MED CLOUDS WITH EMBDD MOD TO INT CONVTN OVER LADAKH REST UP AND WK TO MOD CONVTN OVER PJB HARY (.) SCT LOW/MED CLOUDS OVER DLH (.)

#### **EAST:-**

SCT LOW/MED CLOUDS WITH EMBDD MOD TO INT CONVTN OVER BHR JHRKND CHTGH ORS GWB SKM AND WK TO MOD CONVTN OVER SHWB NE STATES & BD (.)

#### **WEST:-**

SCT TO BKN LOW/MED CLOUDS WITH EMBDD MOD TO INT CONVTN OVER MP AND WK TO MOD CONVTN OVER RAJ GUJ MAHA (.) SCT LOW/MED CLOUDS OVER GOA (.)

#### **SOUTH:-**

SCT LOW/MED CLOUDS WITH EMBDD INT TO V INT CONVTN OVER N TN ADJ SIK (MINIMUM **CTT MINUS 80 DEG CEL**) (.) SCT LOW/MED CLOUDS WITH EMBDD MOD TO INT CONVTN OVER TLNGN RYLSM COTL AP REST SIK ANDAMAN & NICOBAR ILS AND WK TO MOD CONVTN OVER REST KRNTK (.) SCT LOW/MED CLOUDS OVER KER REST TN LKSDP ILS (.)

#### **ARABIAN SEA:-**

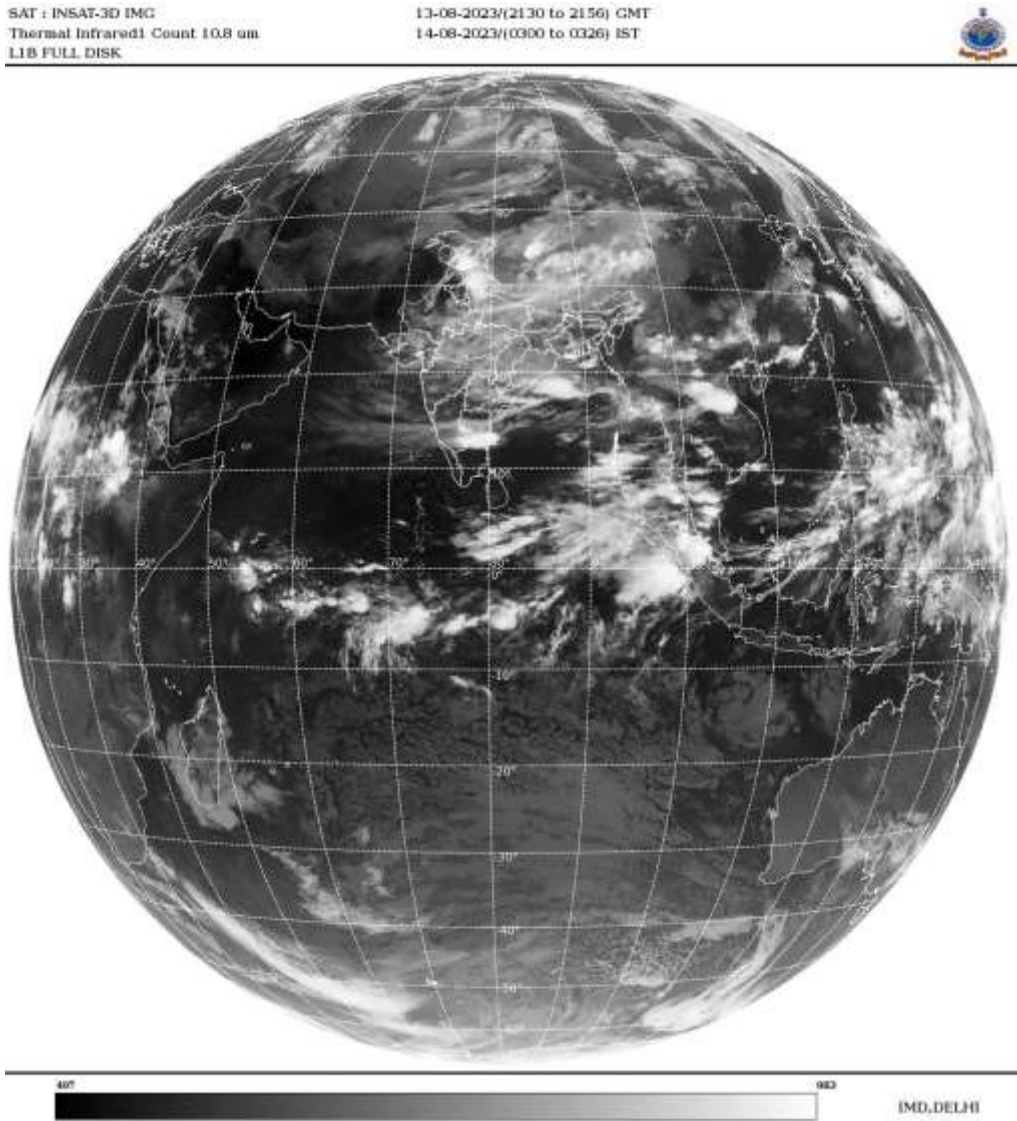
SCT LOW/MED CLOUDS WITH EMBDD ISOL WK TO MOD CONVTN OVER EC ARSEA (.)

#### **BAY OF BENGAL & ANDAMAN SEA:-**

SCT LOW/MED CLOUDS WITH EMBDD INT TO V INT CONVTN OVER WC BAY OFF N TN COAST NORTH ADJ CENTRAL BAY SE BAY ANDAMAN SEA (.) SCT LOW/MED CLOUDS WITH EMBDD MOD TO INT CONVTN OVER REST CENTRAL BAY GULF OF MARTABAN TENASSERIM COAST (.)



CLOUDS DESCRIPTION OUTSIDE INDIA:-



SCT LOW/MED CLOUDS WITH EMBDD MOD TO INT CONVTN OVER SOUTH MALDIVES  
NEPAL BHUTAN TIBET CHINA MYANMAR THAILAND GULF OF THAILAND CAMBODIA LAOS  
VIETNAM SUMATRA STR OF MALACCA MALAYSIA BORNEO SOUTH CHINA SEA CELEBES  
SEA PHILIPPINES SULU SEA AND OVER INDIAN OCEAN BET LAT 5.0N TO 10.0S LONG 53.0E  
TO 100.0E (.)

TOO 14/0430 HRS IST=

NNNN

LEGEND:-

|                    |       |  |
|--------------------|-------|--|
| REGION             | NORTH | J&K HP PJB HARY DLH UP UTRKND                        |
|                    | EAST  | BHR JHRKND CHTGH OR WB SKM<br>NORTH- EAST STATES     |
|                    | WEST  | RAJ MP GUJ MAHA GOA                                  |
|                    | SOUTH | TLNGN AP KRNTK KER TN LKSDP<br>ANDAMAN & NICOBAR ILS |
| CLOUD DISTRIBUTION | ISOL  | ISOLATED (LESS THAN 25%)                             |
|                    | SCT   | SCATTERED (25 TO 50%)                                |
|                    | BKN   | BROKEN (51 TO 75%)                                   |
|                    | SLD   | SOLID (GREATER THAN 75%)                             |

|  |                        |   |
|--|------------------------|---|
| <b>CLOUDS TOP TEMPERATURE</b>  | <b>CTT</b>             | <b>CLOUD TOP TEMPERATURE</b>                                      |
| <b>CONVECTION</b>  | <b>WK CONVTN</b>       | <b>WEAK CONVECTION</b><br><b>(CTT GREATER THAN –25□C)</b>         |
|  | <b>MOD CONVTN</b>      | <b>MODERATE CONVECTION</b><br><b>(CTT BETWEEN -25□C TO -40□C)</b> |
|  | <b>INT CONVTN</b>      | <b>INTENSE CONVECTION</b><br><b>(CTT BETWEEN -41□C TO -70□C)</b>  |
|  | <b>V INT CONVTN</b>    | <b>VERY INTENSE CONVECTION</b><br><b>(CTT LESS THAN -70□C)</b>    |
| <b>METEOROLOGICAL SUB- DIVISIONS, STATES &amp; UNION TERRITORIES</b> | <b>ARUPR</b>           | <b>ARUNACHAL PRADESH</b>  |
|  | <b>BHR</b>             | <b>BIHAR</b>  |
|  | <b>CHTGH</b>           | <b>CHHATTISGARH</b>   |
|  | <b>COTL AP</b>         | <b>COASTAL ANDHRA PRADESH</b>                                     |
|  | <b>COTL KRNTK</b>      | <b>COASTAL KARNATAKA</b>  |
|  | <b>COTL ORS</b>        | <b>COASTAL ORISSA</b>   |
|  | <b>GUJ</b>             | <b>GUJARAT</b>  |
|  | <b>GWB</b>             | <b>GANGETIC WEST BENGAL</b>                                       |
|  | <b>HARY</b>            | <b>HARYANA</b>  |
|  | <b>DLH</b>             | <b>DELHI</b>  |
|  | <b>HP</b>              | <b>HIMACHAL PRADESH</b>   |
|  | <b>J&amp;K</b>         | <b>JAMMU AND KASHMIR</b>  |
|  | <b>JHRKND</b>          | <b>JHARKHAND</b>  |
|  | <b>KER</b>             | <b>KERALA</b>   |
|  | <b>KKN</b>             | <b>KONKAN</b>   |
|  | <b>LKSDP</b>           | <b>LAKSHADWEEP</b>  |
|  | <b>M MAHA</b>          | <b>MADHYA MAHARASHTRA</b>   |
|  | <b>MAHA</b>            | <b>MAHARASHTRA</b>  |
|  | <b>MANI</b>            | <b>MANIPUR</b>  |
|  | <b>MEGHA</b>           | <b>MEGHALAYA</b>  |
|  | <b>MIZO</b>            | <b>MIZORAM</b>  |
|  | <b>MP</b>              | <b>MADHYA PRADESH</b>   |
|  | <b>MRTHWD</b>          | <b>MARATHWADA</b>   |
|  | <b>NAGA</b>            | <b>NAGALAND</b>   |
|  | <b>N COTL AP</b>       | <b>NORTH COASTAL ANDHRA PRADESH</b>                               |
|  | <b>NIK</b>             | <b>NORTH INTERIOR KARNATAKA</b>                                   |
|  | <b>ORS</b>             | <b>ORISSA</b>   |
|  | <b>PJB</b>             | <b>PUNJAB</b>   |
|  | <b>RAJ</b>             | <b>RAJASTHAN</b>  |
|  | <b>RYLSM</b>           | <b>RAYALASEEMA</b>  |
|  | <b>SAU &amp; KUTCH</b> | <b>SAURASHTRA &amp; KUTCH</b>                                     |
|  | <b>SHWB</b>            | <b>SUB-HIMALAYAN WEST BENGAL</b>                                  |
|  | <b>SIK</b>             | <b>SOUTH INTERIOR KARNATAKA</b>                                   |
|  | <b>SKM</b>             | <b>SIKKIM</b>   |
|  | <b>TLNGN</b>           | <b>TELANGANA</b>  |
|  | <b>TN</b>              | <b>TAMIL NADU</b>   |
|  | <b>TRP</b>             | <b>TRIPURA</b>  |
|  | <b>UP</b>              | <b>UTTAR PRADESH</b>  |

|                      |               |                                  |
|----------------------|---------------|----------------------------------|
|                      | <b>UTRKND</b> | <b>UTTARAKHAND</b>               |
|                      | <b>VID</b>    | <b>VIDHARBHA</b>                 |
|                      | <b>SHWB</b>   | <b>SUB HIMALAYAN WEST BENGAL</b> |
|                      | <b>GWB</b>    | <b>GANGETIC WEST BENGAL</b>      |
|                      | <b>ARSEA</b>  | <b>ARABIAN SEA</b>               |
|                      | <b>ILS</b>    | <b>ISLANDS</b>                   |
| <b>MISCELLANEOUS</b> | <b>ASSW</b>   | <b>IN ASSOCIATION WITH</b>       |
|                      | <b>ASSTD</b>  | <b>ASSOCIATED</b>                |
|                      | <b>LLC</b>    | <b>LOW LEVEL CIRCULATION</b>     |
|                      | <b>EMBDD</b>  | <b>EMBEDDED</b>                  |
|                      | <b>N/HOOD</b> | <b>NEIGHBOURHOOD</b>             |
|                      | <b>EXT</b>    | <b>EXTREME</b>                   |