



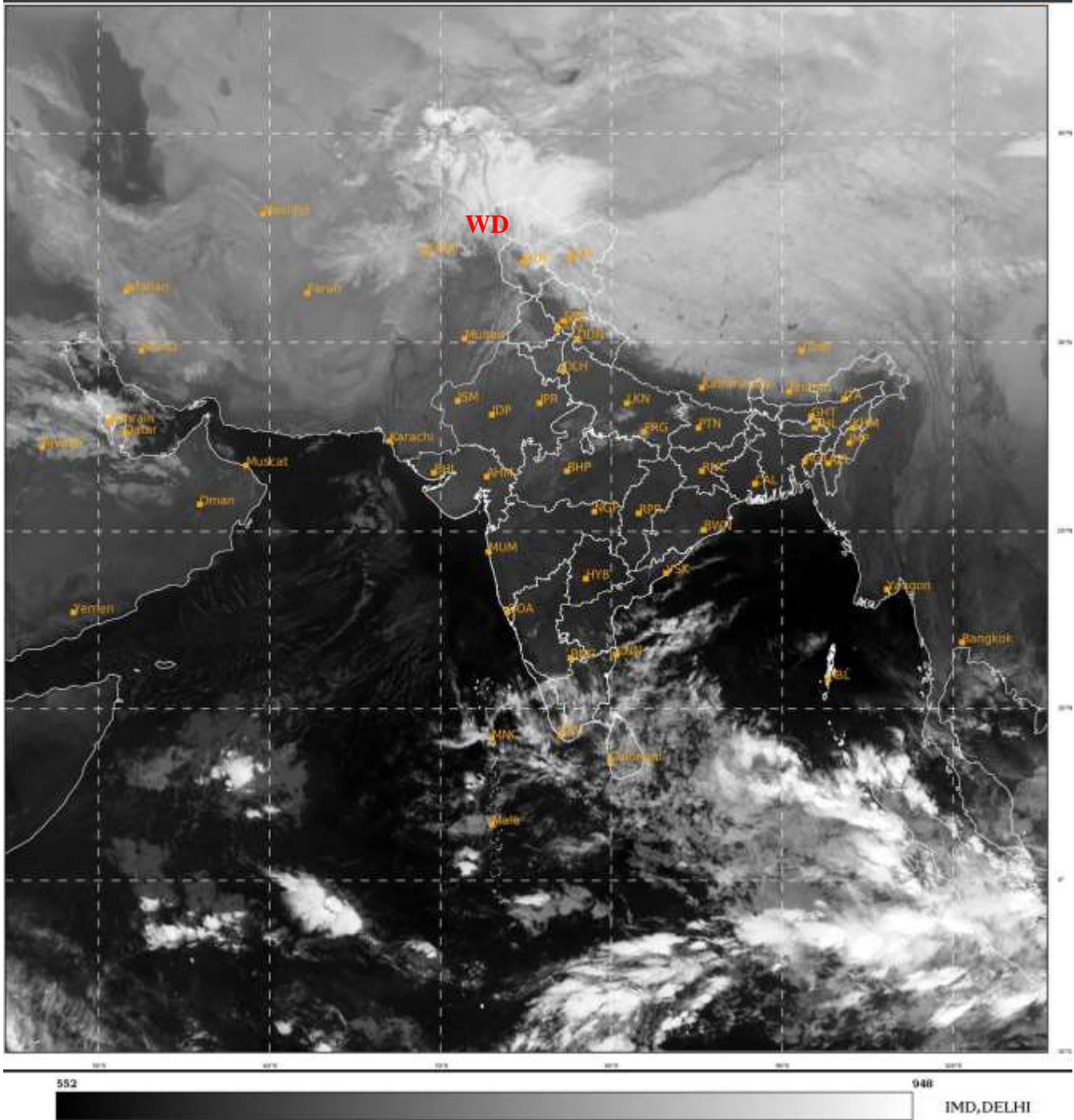
भारत मौसम विज्ञान विभाग
पृथ्वी विज्ञान मंत्रालय
India Meteorological Department
Ministry of Earth Sciences



**SATELLITE BULLETIN BASED ON SATELLITE
IMAGERIES AND PRODUCTS**
22.01.2023 TIME 2100 UTC

SAT : INSAT-3D IMG
IMG_TIR1 10.8 um
LIC Mercator

22-01-2023/(2100 to 2126) GMT
23-01-2023/(0230 to 0256) IST



TCIN50 DEMS 222100

SATELLITE BULLETIN BASED ON INSAT-3D PIC OF 222100 UTC (.)

REGION COVERED BETWEEN LAT 50.0°N TO 35.0°S AND LONG 40.0°E TO 125.0°E (.)

SALIENT FEATURES:-

WESTERN DISTURBANCE (WD):-

SCT MULTILAYERED CLOUDS OVER E AFGAN N PAK J&K LADAKH AND N/HOOD IN ASSW
WD OVER THE AREA (.)



INSAT-3D 22-JAN-2023 21:00 WV IMG

WATER VAPOUR WIND

(1Kt = 0.5 m/s)

10 Kt

15 Kt

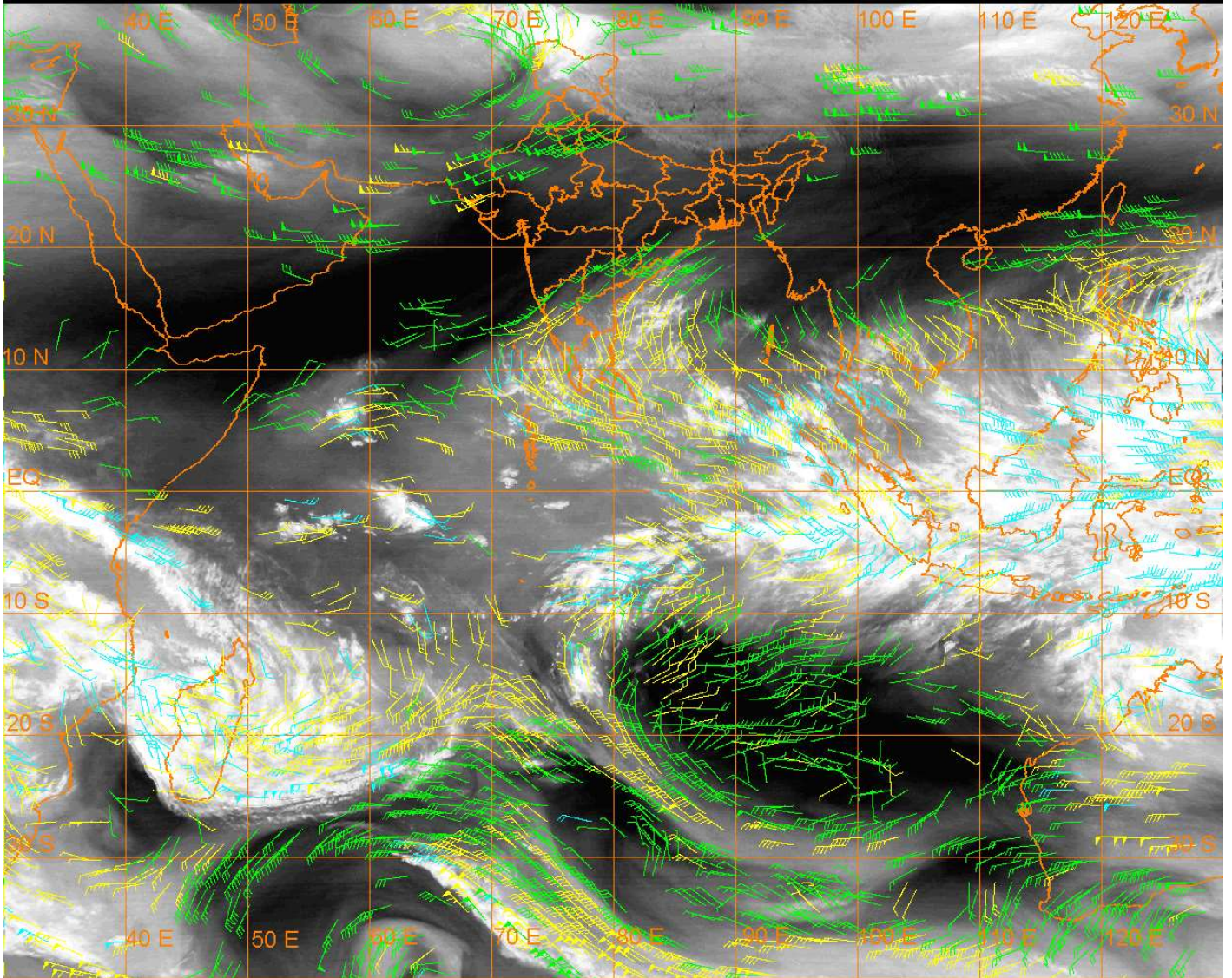
20 Kt

50 Kt

100-250 hPa

251-350 hPa

351-500 hPa



CLOUDS DESCRIPTION WITHIN INDIA:-

NORTH:-

SCT LOW/MED CLOUDS WITH EMBDD MOD TO INT CONVTN OVER NW LADAKH N J&K AND WK TO MOD CONVTN OVER REST LADAKH S J&K N HP N UTRKND SE UP (.) SCT LOW/MED CLOUDS OVER S HP S UTRKND PJB HARY SW UP (.)

EAST:-

SCT LOW/MED CLOUDS WITH EMBDD WK TO MOD CONVTN OVER NW BHR SKM ARUPR (.) ISOL TO SCT LOW/MED CLOUDS OVER E ORS REST NE STATES (.)

WEST:-

SCT LOW/MED CLOUDS WITH EMBDD ISOL WK CONVTN OVER NE MP (.) SCT LOW/MED CLOUDS OVER N RAJ W MP NORTH M MAHA (.)

SOUTH:-

SCT LOW/MED CLOUDS WITH EMBDD MOD TO INT CONVTN OVER S KER S TN AND ISOL WK TO MOD CONVTN OVER S RYLSM S COTL AP S SIK N KER N TN LKSDP ILS NICOBAR ILS (.) SCT LOW/MED CLOUDS OVER N COTL AP REST KRNTK & ANDAMAN ILS (.)

ARABIAN SEA:-

SCT LOW/MED CLOUDS WITH EMBDD ISOL MOD TO INT CONVTN OVER S ARSEA & COMORIN AREA (.)

BAY OF BENGAL & ANDAMAN SEA:-

SCT LOW/MED CLOUDS WITH EMBDD INT TO V INT CONVTN OVER SE BAY S ANDAMAN SEA AND MOD TO INT CONVTN OVER WC & SW BAY (.)

CLOUDS DESCRIPTION OUTSIDE INDIA:-

SCT LOW/MED CLOUDS WITH EMBDD MOD TO INT CONVTN OVER SRI LANKA PALK STR GULF OF MANNAR CHINA SUMATRA STR OF MALACCA MALAYSIA BORNEO SOUTH CHINA SEA JAVA ILS & SEA CELEBES ILS & SEA PHILIPPINES SULU SEA MADAGASCAR MOZAMBIQUE CHANNEL AND OVER INDIAN OCEAN BET LAT 5.0N TO 10.0S LONG 52.0E TO 110.0E AND BET LAT 10.0S TO 26.0S LONG 40.0E TO 80.0E (.)

TOO 23/0430 HRS IST=

NNNN

LEGEND:-

REGION	NORTH	J&K HP PJB HARY DLH UP UTRKND
	EAST	BHR JHRKND CHTGH OR WB SKM NORTH- EAST STATES
	WEST	RAJ MP GUJ MAHA GOA
	SOUTH	TLNGN AP KRNTK KER TN LKSDP ANDAMAN & NICOBAR ILS

CLOUD DISTRIBUTION	ISOL	ISOLATED (LESS THAN 25%)
	SCT	SCATTERED (25 TO 50%)
	BKN	BROKEN (51 TO 75%)
	SLD	SOLID (GREATER THAN 75%)
CLOUDS TOP TEMPERATURE	CTT	CLOUD TOP TEMPERATURE
CONVECTION	WK CONVTN	WEAK CONVECTION (CTT GREATER THAN -25°C)
	MOD CONVTN	MODERATE CONVECTION (CTT BETWEEN -25°C TO -40°C)
	INT CONVTN	INTENSE CONVECTION (CTT BETWEEN -41°C TO -70°C)
	V INT CONVTN	VERY INTENSE CONVECTION (CTT LESS THAN -70°C)
METEOROLOGICAL SUB-DIVISIONS, STATES & UNION TERRITORIES	ARUPR	ARUNACHAL PRADESH
	BHR	BIHAR
	CHTGH	CHHATTISGARH
	COTL AP	COASTAL ANDHRA PRADESH
	COTL KRNTK	COASTAL KARNATAKA
	COTL ORS	COASTAL ORISSA
	GUJ	GUJARAT
	GWB	GANGETIC WEST BENGAL
	HARY	HARYANA
	DLH	DELHI
	HP	HIMACHAL PRADESH
	J&K	JAMMU AND KASHMIR
	JHRKND	JHARKHAND
	KER	KERALA
	KKN	KONKAN
LKSDP	LAKSHADWEEP	

	M MAHA	MADHYA MAHARASHTRA
	MAHA	MAHARASHTRA
	MANI	MANIPUR
	MEGHA	MEGHALAYA
	MIZO	MIZORAM
	MP	MADHYA PRADESH
	MRTHWD	MARATHWADA
	NAGA	NAGALAND
	N COTL AP	NORTH COASTAL ANDHRA PRADESH
	NIK	NORTH INTERIOR KARNATAKA
	ORS	ORISSA
	PJB	PUNJAB
	RAJ	RAJASTHAN
	RYLSM	RAYALASEEMA
	SAU & KUTCH	SAURASHTRA & KUTCH
	SHWB	SUB-HIMALAYAN WEST BENGAL
	SIK	SOUTH INTERIOR KARNATAKA
	SKM	SIKKIM
	TLNGN	TELANGANA
	TN	TAMIL NADU
	TRP	TRIPURA
	UP	UTTAR PRADESH
	UTRKN D	UTTARAKHAND
	VID	VIDHARBHA
	SHWB	SUB HIMALAYAN WEST BENGAL
	GWB	GANGETIC WEST BENGAL
	ARSEA	ARABIAN SEA
	ILS	ISLANDS
MISCELLANEOUS	ASSW	IN ASSOCIATION WITH
	ASSTD	ASSOCIATED
	LLC	LOW LEVEL CIRCULATION
	EMBDD	EMBEDDED
	N/HOOD	NEIGHBOURHOOD
	EXT	EXTREME