



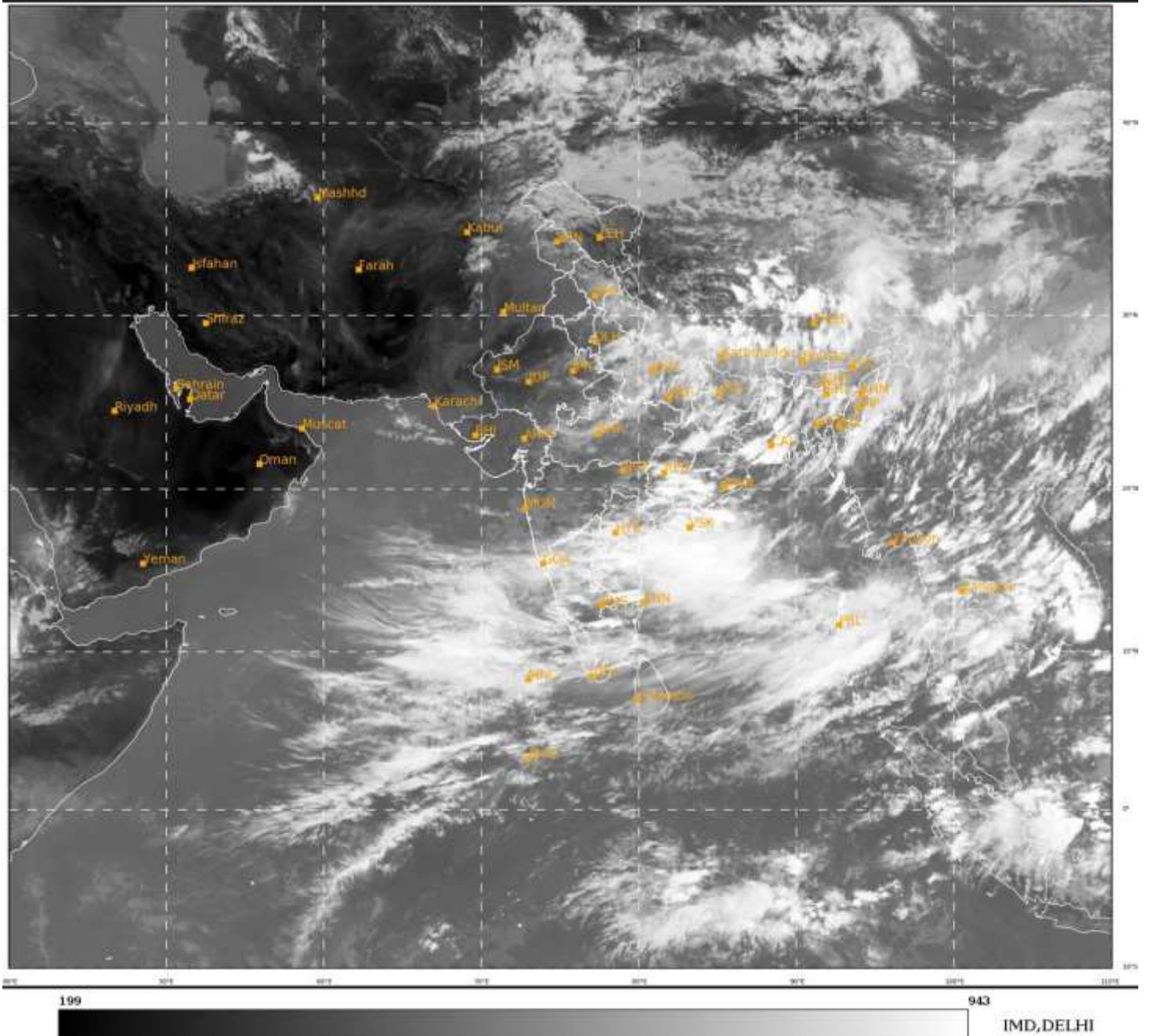
भारत मौसम विज्ञान विभाग  
पृथ्वी विज्ञान मंत्रालय  
India Meteorological Department  
Ministry of Earth Sciences



**SATELLITE BULLETIN BASED ON SATELLITE**  
**IMAGERIES AND PRODUCTS**  
**27.08.2021 TIME 0900 UTC**

SAT : INSAT-3D IMG  
IMG\_TIR1 10.8 um  
LIC Mercator

27-08-2021/(0900 to 0926) GMT  
27-08-2021/(1430 to 1456) IST



TCIN50 DEMS 270900

SATELLITE BULLETIN BASED ON INSAT-3D PIC OF 270900 UTC (.)

REGION COVERED BETWEEN LAT 50.0°N TO 30.0°S AND LONG 40.0°E TO 125.0°E (.)

**SALIENT FEATURES:-**

**WESTERN DISTURBANCE (WD):-**

SCT MULTILAYERED CLOUDS OVER BLACK SEA AND ADJOINING AREAS IN ASSW **WD** OVER THE AREA (.)



INSAT-3D 27-AUG-2021 09:00 WV IMG

WATER VAPOUR WIND

(1Kt = 0.5 m/s)

10 Kt

15 Kt

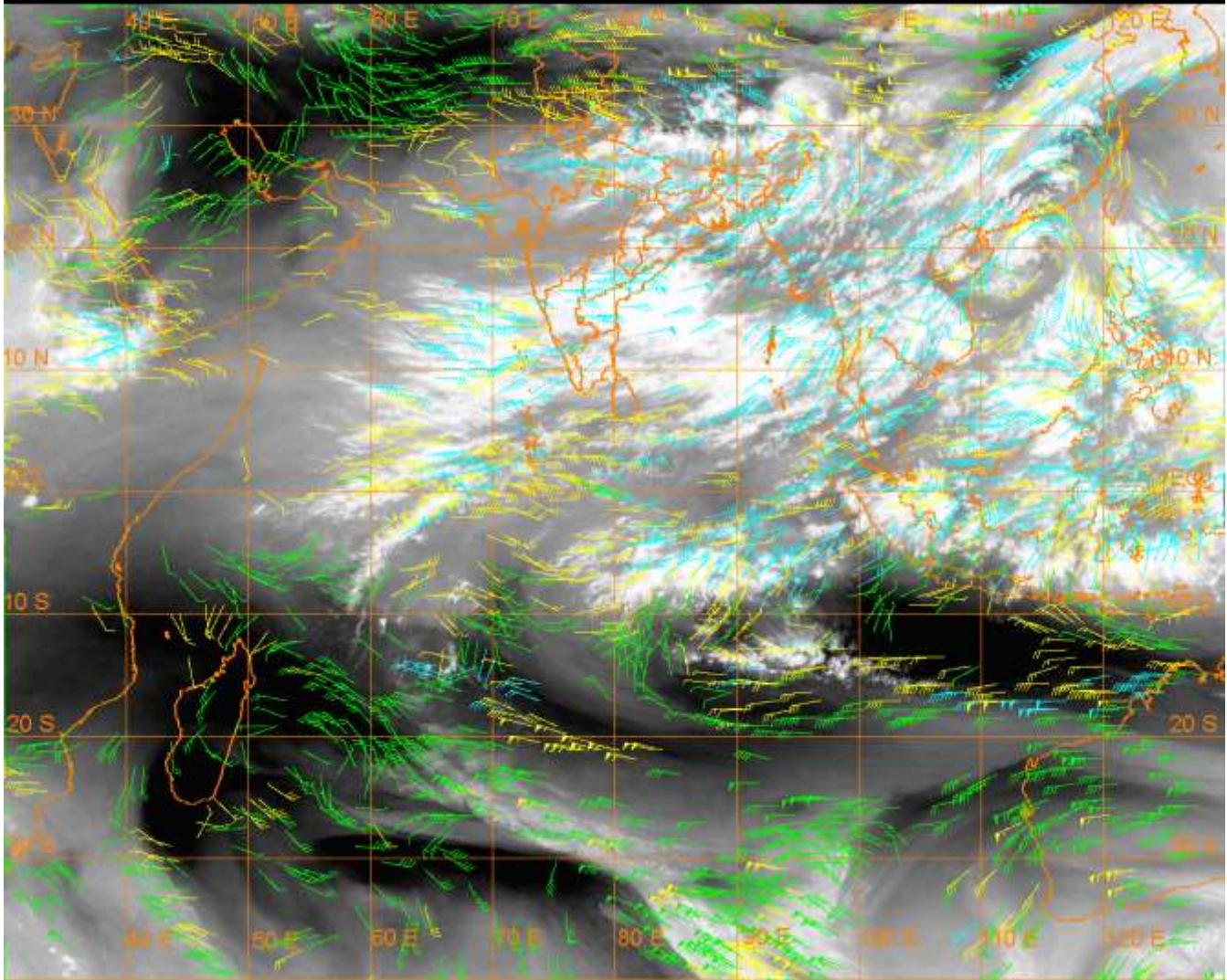
20 Kt

50 Kt

100-250 hPa

251-350 hPa

351-500 hPa



### **CLOUDS DESCRIPTION WITHIN INDIA:-**

#### **NORTH:-**

SCT LOW/MED CLOUDS WITH EMBDD MOD TO INT CONVTN OVER WC ADJ E UP & NEPAL AND WK TO MOD CONVTN OVER REST UP HP UTRKND NW LADAKH N J&K (.) SCT LOW/MED CLOUDS OVER S J&K EXT SE HARY (.)

#### **EAST:-**

SCT LOW/MED CLOUDS WITH EMBDD INT TO V INT CONVTN OVER S GWB EXT E CHTGH SW ORS C ASSAM AND MOD TO INT CONVTN OVER EXT N& SW BHR REST ORS REST CHTGH N JHRKND S SHWB SKM MEGHA REST ASSAM N ARUPR (.) SCT LOW/MED CLOUDS WITH EMBDD WK TO MOD CONVTN OVER REST PARTS OF THE REGION EXCEPT NW CHTGH (.)

#### **WEST:-**

SCT LOW/MED CLOUDS WITH EMBDD ISOL WK TO MOD CONVTN OVER NW MP NE RAJ E VID S KKN GOA (.) SCT LOW/MED CLOUDS OVER SE RAJ GUJ REST MP REST MAHA (.)

#### **SOUTH:-**

SCT LOW/MED CLOUDS WITH EMBDD MOD TO INT CONVTN OVER THE REGION EXCEPT SCT LOW/MED CLOUDS WITH EMBDD WK TO MOD CONVTN OVER N TLNGN SIK NICOBAR ILS (.)

#### **ARABIAN SEA:-**

SCT LOW/MED CLOUDS WITH EMBDD INT TO V INT CONVTN OVER ARSEA SOUTH OF LAT 16.5N EAST OF LONG 61.0E (.)

#### **BAY OF BENGAL & ANDAMAN SEA:-**

SCT LOW/MED CLOUDS WITH EMBDD INT TO V INT CONVTN OVER WC BAY AND MOD TO INT CONVTN OVER REST BAY ANDAMAN SEA (.)

**CLOUDS DESCRIPTION OUTSIDE INDIA:-**

**SCT LOW/MED CLOUDS WITH EMBDD MOD TO INT CONVTN OVER MALDIVES NEPAL  
BHUTAN TIBET CHINA YELLOW SEA E CHINA SEA MYANMAR THAILAND GULF OF THAILAND  
CAMBODIA LAOS VIETNAM GULF OF TONKIN SUMATRA STR OF MALACCA MALAY  
PENINSULA BORNEO S CHINA SEA JAVA SEA CELEBES ILS & SEA PHILIPPINES SULU SEA  
OVER INDIAN OCEAN BET LAT 5.0N TO 08.0S LONG 54.0E TO 74.0E AND BET EQT TO LAT 14.5 S  
LONG 75.0E TO 100.0E (.)**

**TOO 27/1535EF=**

**NNNN**

**LEGEND:-**

<b>REGION</b>	<b>NORTH</b>	<b>J&amp;K HP PJB HARY DLH UP UTRKND</b>
	<b>EAST</b>	<b>BHR JHRKND CHTGH ORS WB SKMNORTH-EAST STATES</b>
	<b>WEST</b>	<b>RAJ MP GUJ MAHA GOA</b>
	<b>SOUTH</b>	<b>TLNGN AP KRNTK KER TN LKSDP ANDAMAN &amp; NICOBAR ILS</b>

<b>CLOUD DISTRIBUTION</b>	<b>ISOL</b>	<b>ISOLATED (LESS THAN 25%)</b>
	<b>SCT</b>	<b>SCATTERED (25 TO 50%)</b>
	<b>BKN</b>	<b>BROKEN (51 TO 75%)</b>
	<b>SLD</b>	<b>SOLID (GREATER THAN 75%)</b>
<b>CLOUDS TOP TEMPERATURE</b>	<b>CTT</b>	<b>CLOUD TOP TEMPERATURE</b>
<b>CONVECTION</b>	<b>WK CONVTN</b>	<b>WEAK CONVECTION (CTT GREATER THAN -25°C)</b>
	<b>MOD CONVTN</b>	<b>MODERATE CONVECTION (CTT BETWEEN -25°C TO -40°C)</b>
	<b>INT CONVTN</b>	<b>INTENSE CONVECTION (CTT BETWEEN -41°C TO -70°C)</b>
	<b>V INT CONVTN</b>	<b>VERY INTENSE CONVECTION (CTT LESS THAN -70°C)</b>
<b>METEOROLOGICAL SUB-DIVISIONS, STATES &amp; UNION TERRITORIES</b>	<b>ARUPR</b>	<b>ARUNACHAL PRADESH</b>
	<b>BHR</b>	<b>BIHAR</b>
	<b>CHTGH</b>	<b>CHHATTISGARH</b>
	<b>COTL AP</b>	<b>COASTAL ANDHRA PRADESH</b>
	<b>COTL KRNTK</b>	<b>COASTAL KARNATAKA</b>
	<b>COTL ORS</b>	<b>COASTAL ORISSA</b>
	<b>GUJ</b>	<b>GUJARAT</b>
	<b>GWB</b>	<b>GANGETIC WEST BENGAL</b>
	<b>HARY</b>	<b>HARYANA</b>
	<b>DLH</b>	<b>DELHI</b>
	<b>HP</b>	<b>HIMACHAL PRADESH</b>
	<b>J&amp;K</b>	<b>JAMMU AND KASHMIR</b>
	<b>JHRKND</b>	<b>JHARKHAND</b>
	<b>KER</b>	<b>KERALA</b>
	<b>KKN</b>	<b>KONKAN</b>
	<b>LKSDP</b>	<b>LAKSHADWEEP</b>
	<b>M MAHA</b>	<b>MADHYA MAHARASHTRA</b>
	<b>MAHA</b>	<b>MAHARASHTRA</b>
	<b>MANI</b>	<b>MANIPUR</b>
	<b>MEGHA</b>	<b>MEGHALAYA</b>
<b>MIZO</b>	<b>MIZORAM</b>	
<b>MP</b>	<b>MADHYA PRADESH</b>	

	<b>MRTHWD</b>	<b>MARATHWADA</b>
	<b>NAGA</b>	<b>NAGALAND</b>
	<b>N COTL AP</b>	<b>NORTH COASTAL ANDHRA PRADESH</b>
	<b>NIK</b>	<b>NORTH INTERIOR KARNATAKA</b>
	<b>ORS</b>	<b>ORISSA</b>
	<b>PJB</b>	<b>PUNJAB</b>
	<b>RAJ</b>	<b>RAJASTHAN</b>
	<b>RYLSM</b>	<b>RAYALASEEMA</b>
	<b>SAU &amp; KUTCH</b>	<b>SAURASHTRA &amp; KUTCH</b>
	<b>SHWB</b>	<b>SUB-HIMALAYAN WEST BENGAL</b>
	<b>SIK</b>	<b>SOUTH INTERIOR KARNATAKA</b>
	<b>SKM</b>	<b>SIKKIM</b>
	<b>TLNGN</b>	<b>TELANGANA</b>
	<b>TN</b>	<b>TAMIL NADU</b>
	<b>TRP</b>	<b>TRIPURA</b>
	<b>UP</b>	<b>UTTAR PRADESH</b>
	<b>UTRKN D</b>	<b>UTTARAKHAND</b>
	<b>VID</b>	<b>VIDHARBHA</b>
	<b>SHWB</b>	<b>SUB HIMALAYAN WEST BENGAL</b>
	<b>GWB</b>	<b>GANGETIC WEST BENGAL</b>
	<b>ARSEA</b>	<b>ARABIAN SEA</b>
	<b>ILS</b>	<b>ISLANDS</b>
<b>MISCELLANEOUS</b>	<b>ASSW</b>	<b>IN ASSOCIATION WITH</b>
	<b>ASSTD</b>	<b>ASSOCIATED</b>
	<b>LLC</b>	<b>LOW LEVEL CIRCULATION</b>
	<b>EMBDD</b>	<b>EMBEDDED</b>
	<b>N/HOOD</b>	<b>NEIGHBOURHOOD</b>
	<b>EXT</b>	<b>EXTREME</b>