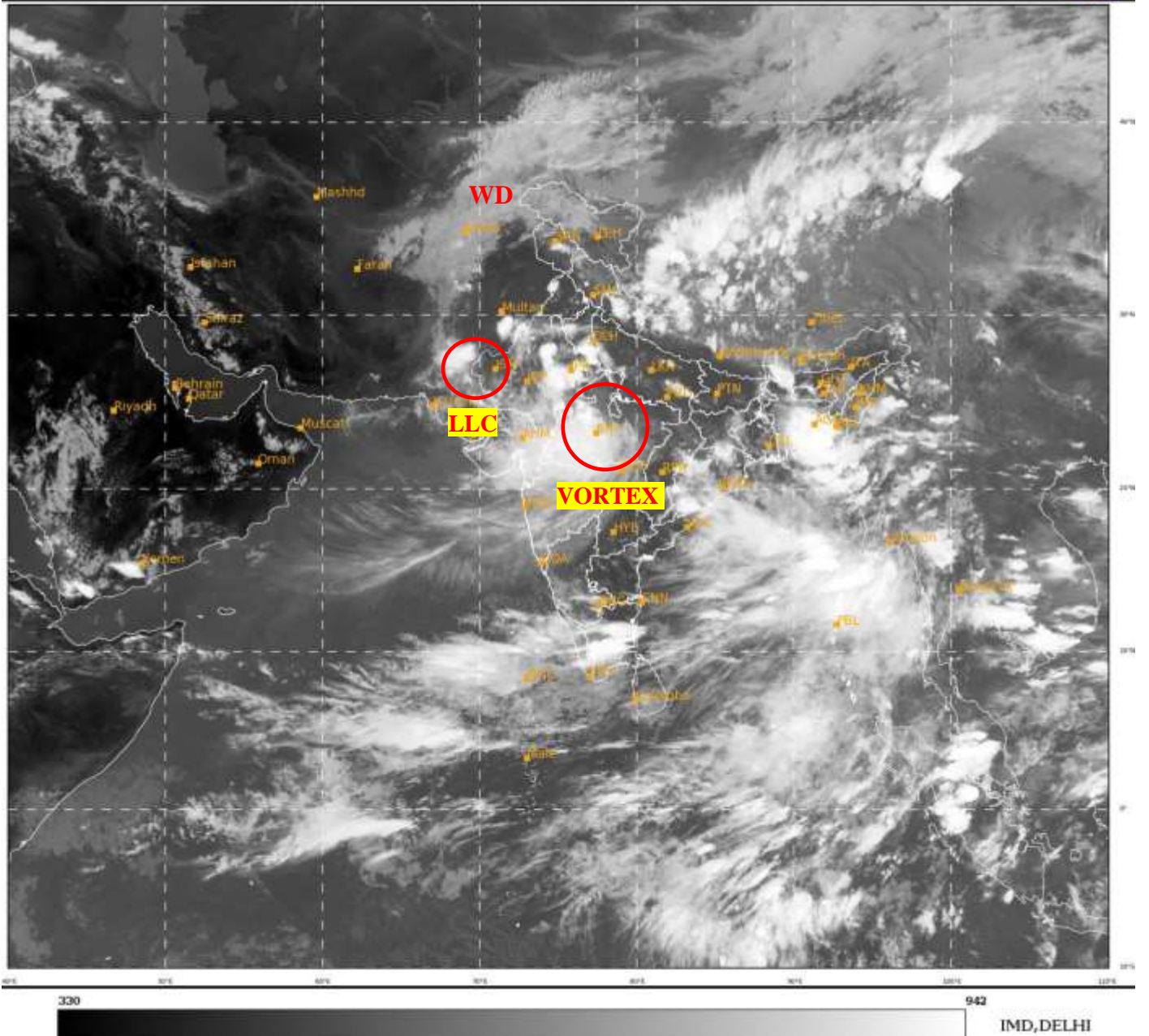




**SATELLITE BULLETIN BASED ON SATELLITE
IMAGERIES AND PRODUCTS**
22.08.2022 TIME 1200 UTC

SAT : INSAT-3DR IMG
IMG TIR1 10.8 um
LIC Mercator

22-08-2022/(1215 to 1242) GMT
22-08-2022/(1745 to 1812) IST



TCIN50 DEMS 221200

SATELLITE BULLETIN BASED ON INSAT-3DR PIC OF 221200 UTC (.)

REGION COVERED BETWEEN LAT 50.0°N TO 30.0°S AND LONG 40.0°E TO 125.0°E (.)

SALIENT FEATURES:-

VORTEX OVER CENTRAL PARTS OF NORTH MADHYA PRADESH & N/HOOD:-

VORTEX OVER CENTRAL PARTS OF NORTH MP & N/HOOD (.) **CENTER NOT DEFINED IN SATELLITE IMAGERY (.)** ASSTD SCT TO BKN LOW/MED CLOUDS WITH EMBDD INT TO V INT CONVTN OVER W MP E RAJ (MINIMUM CTT MINUS 90 DEG C) (.)

LLC OVER SE PAK ADJ SW RAJ & N/HOOD:-

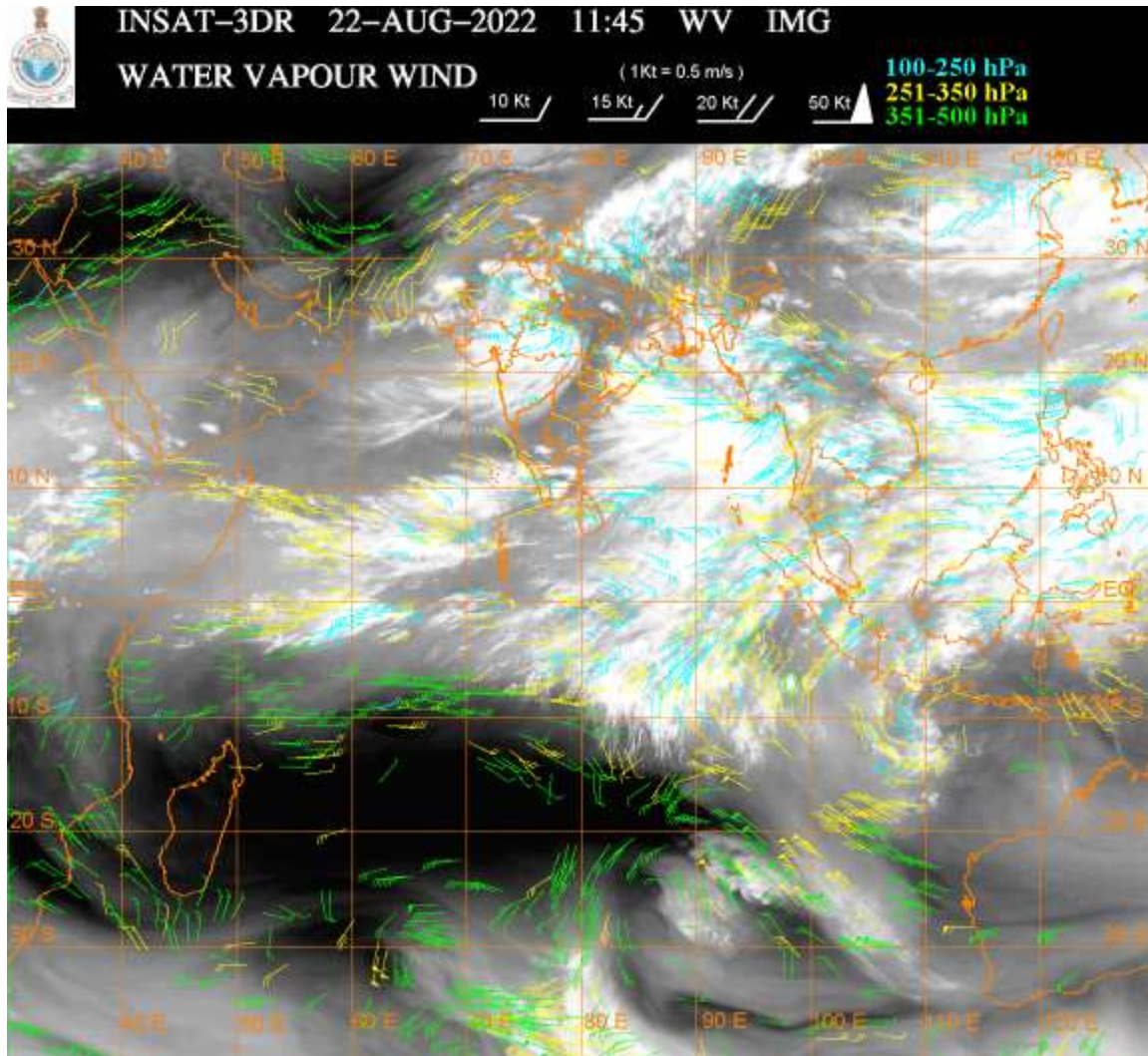
LLC OVER SE PAK ADJ SW RAJ & N/HOOD (.) ASSTD SCT TO BKN LOW/MED CLOUDS WITH EMBDD MOD TO INT CONVTN OVER S PAK (.)

WESTERN DISTURBANCE:-

SCT MULTILAYERED CLOUDS OVER E AFGAN N PAK J&K LADAKH AND N/HOOD IN ASSW **WD** OVER THE AREA (.)

INTENSE CONVECTIVE CLOUDS:-

INTENSE CONVECTIVE CLOUDS OBSERVED OVER N UTRKND S HARY EXT W&EC UP W MP ORS N SHWB MIZO TRP VID ADJ N MADHYA MAHA KER TN ANDAMAN ILS (.)



CLOUDS DESCRIPTION WITHIN INDIA:-

NORTH:-

SCT TO BKN LOW/MED CLOUDS WITH EMBDD INT TO V INT CONVTN OVER N UTRKND (MINIMUM CTT MINUS 75 DEG C) EXT W & EC UP SE HARY (MINIMUM CTT MINUS 80 DEG C) (.) SCT LOW/MED CLOUDS WITH EMBDD MOD TO INT CONVTN OVER N J&K WC HP N UTRKND EXT PARTS OF PJB SW HARY AND ISOL WK TO MOD CONVTN OVER LADAKH REST HP N HARY DLH (.) SCT LOW/MED CLOUDS OVER S UTRKND REST UP (.)

EAST:-

SCT TO BKN LOW/MED CLOUDS WITH EMBDD INT TO V INT CONVTN OVER SE ORS N GWB N SHWB MIZO TRP (MINIMUM CTT MINUS 90 DEG C) (.) SCT LOW/MED CLOUDS WITH EMBDD MOD TO INT CONVTN OVER NE CHTGH ORS W ASSAM W MEGHA (.) SCT LOW/MED CLOUDS WITH EMBDD ISOL WK TO MOD CONVTN OVER S JHRKND REST GWB SOUTH SHWB SKM ARUPR SE ASSAM S NAGA MANI (.) SCT LOW/MED CLOUDS OVER REST PARTS OF THE REGION (.)

WEST:-

SCT TO BKN LOW/MED CLOUDS WITH EMBDD INT TO V INT CONVTN OVER NE RAJ (MINIMUM CTT MINUS 93 DEG C) SW MP (MINIMUM CTT MINUS 82 DEG C) (.) SCT LOW/MED CLOUDS WITH EMBDD MOD TO INT CONVTN OVER REST RAJ E GUJ NORTH MADHYA MAHA NW VID AND WK TO MOD CONVTN OVER W GUJ REST MAHA (.) SCT LOW/MED CLOUDS OVER GOA (.)

SOUTH:-

SCT TO BKN LOW/MED CLOUDS WITH EMBDD INT TO V INT CONVTN OVER ANDAMAN ILS (MINIMUM CTT MINUS 80 DEG C) S TN (MINIMUM CTT MINUS 93 DEG C) (.) SCT LOW/MED CLOUDS WITH EMBDD MOD TO INT CONVTN OVER EXT PARTS OF COTL AP SIK NW TN KER LKSDP ILS (.) SCT LOW/MED CLOUDS WITH EMBDD WK TO MOD CONVTN OVER REST KRNTK NW TLNGN NE TN NICOBAR ILS (.) SCT LOW/MED CLOUDS OVER REST TLNGN RYLSM REST COTL AP (.)

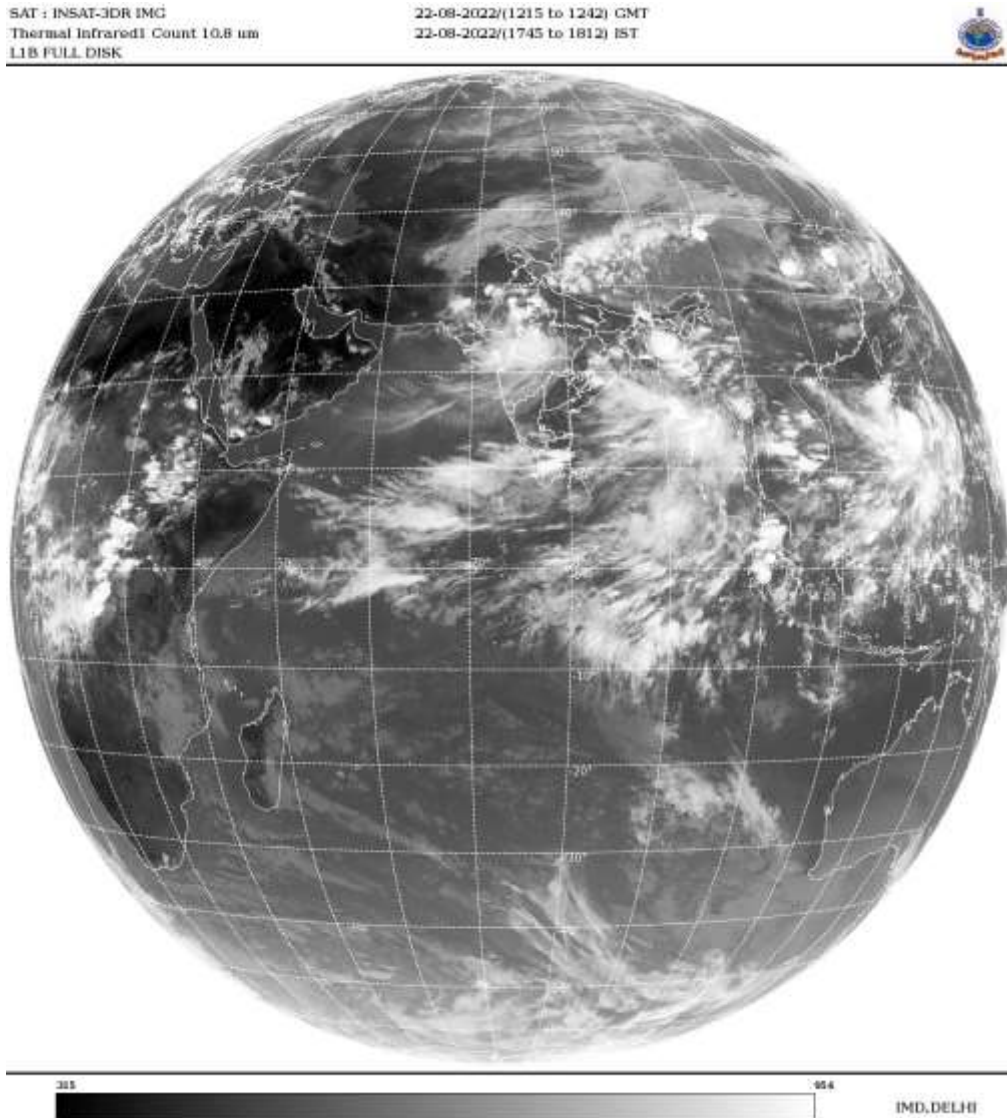
ARABIAN SEA:-

SCT TO BKN LOW/MED CLOUDS WITH EMBDD INT TO V INT CONVTN OVER SE ARSEA (.) SCT LOW/MED CLOUDS WITH EMBDD MOD TO INT CONVTN OVER GULF OF CAMBAY LKSDP ILS AREA (.) SCT LOW/MED CLOUDS WITH EMBDD WK TO MOD CONVTN OVER EXT NE & EC ARSEA (.)

BAY OF BENGAL & ANDAMAN SEA:-

SCT TO BKN LOW/MED CLOUDS WITH EMBDD INT TO V INT CONVTN OVER N & EC BAY N ANDAMAN SEA (.) SCT LOW/MED CLOUDS WITH EMBDD MOD TO INT CONVTN OVER REST BAY S ANDAMAN SEA GULF OF MARTABAN TENASSERIM COAST (.)

CLOUDS DESCRIPTION OUTSIDE INDIA:-



SCT LOW/MED CLOUDS WITH EMBDD MOD TO INT CONVTN OVER N MALDIVES PAK TIBET CHINA MYANMAR THAILAND COMBODIA LAOS S VIETNAM GULF OF THIALAND SUMATRA STR OF MALACCA MALAYSIA BORNEO SOUTH CHINA SEA JAVA ILS & SEA PHILIPPINES SULU SEA HAINAN YELLOW SEA AND OVER INDIAN OCEAN BET LAT 5.0N TO 13.0S LONG 50.0E TO 112.0E (.)

TOO 22/1845 HRS IST=

NNNN

LEGEND:-

	NORTH	J&K HP PJB HARY DLH UP UTRKND
--	-------	-------------------------------

REGION	EAST	BHR JHRKND CHTGH OR WB SKM NORTH- EAST STATES
	WEST	RAJ MP GUJ MAHA GOA
	SOUTH	TLNGN AP KRNTK KER TN LKSDP ANDAMAN & NICOBAR ILS

CLOUD DISTRIBUTION	ISOL	ISOLATED (LESS THAN 25%)	
	SCT	SCATTERED (25 TO 50%)	
	BKN	BROKEN (51 TO 75%)	
	SLD	SOLID (GREATER THAN 75%)	
CLOUDS TOP TEMPERATURE	CTT	CLOUD TOP TEMPERATURE	
CONVECTION	WK CONVTN	WEAK CONVECTION (CTT GREATER THAN -25°C)	
	MOD CONVTN	MODERATE CONVECTION (CTT BETWEEN -25°C TO -40°C)	
	INT CONVTN	INTENSE CONVECTION (CTT BETWEEN -41°C TO -70°C)	
	V INT CONVTN	VERY INTENSE CONVECTION (CTT LESS THAN -70°C)	
METEOROLOGICAL SUB-DIVISIONS, STATES & UNION TERRITORIES	ARUPR	ARUNACHAL PRADESH	
	BHR	BIHAR	
	CHTGH	CHHATTISGARH	
	COTL AP	COASTAL ANDHRA PRADESH	
	COTL KRNTK	COASTAL KARNATAKA	
	COTL ORS	COASTAL ORISSA	
	GUJ	GUJARAT	
	GWB	GANGETIC WEST BENGAL	
	HARY	HARYANA	
	DLH	DELHI	
	HP	HIMACHAL PRADESH	
	J&K	JAMMU AND KASHMIR	
	JHRKND	JHARKHAND	
	KER	KERALA	
	KKN	KONKAN	
	LKSDP	LAKSHADWEEP	
	M MAHA	MADHYA MAHARASHTRA	
	MAHA	MAHARASHTRA	
	MANI	MANIPUR	
	MEGHA	MEGHALAYA	
	MIZO	MIZORAM	
	MP	MADHYA PRADESH	
		MRTHWD	MARATHWADA
		NAGA	NAGALAND
N COTL AP		NORTH COASTAL ANDHRA PRADESH	
NIK		NORTH INTERIOR KARNATAKA	
ORS		ORISSA	
PJB		PUNJAB	

	RAJ	RAJASTHAN
	RYLSM	RAYALASEEMA
	SAU & KUTCH	SAURASHTRA & KUTCH
	SHWB	SUB-HIMALAYAN WEST BENGAL
	SIK	SOUTH INTERIOR KARNATAKA
	SKM	SIKKIM
	TLNGN	TELANGANA
	TN	TAMIL NADU
	TRP	TRIPURA
	UP	UTTAR PRADESH
	UTRKN	UTTARAKHAND
	VID	VIDHARBHA
	SHWB	SUB HIMALAYAN WEST BENGAL
	GWB	GANGETIC WEST BENGAL
	ARSEA	ARABIAN SEA
	ILS	ISLANDS
MISCELLANEOUS	ASSW	IN ASSOCIATION WITH
	ASSTD	ASSOCIATED
	LLC	LOW LEVEL CIRCULATION
	EMBDD	EMBEDDED
	N/HOOD	NEIGHBOURHOOD
	EXT	EXTREME