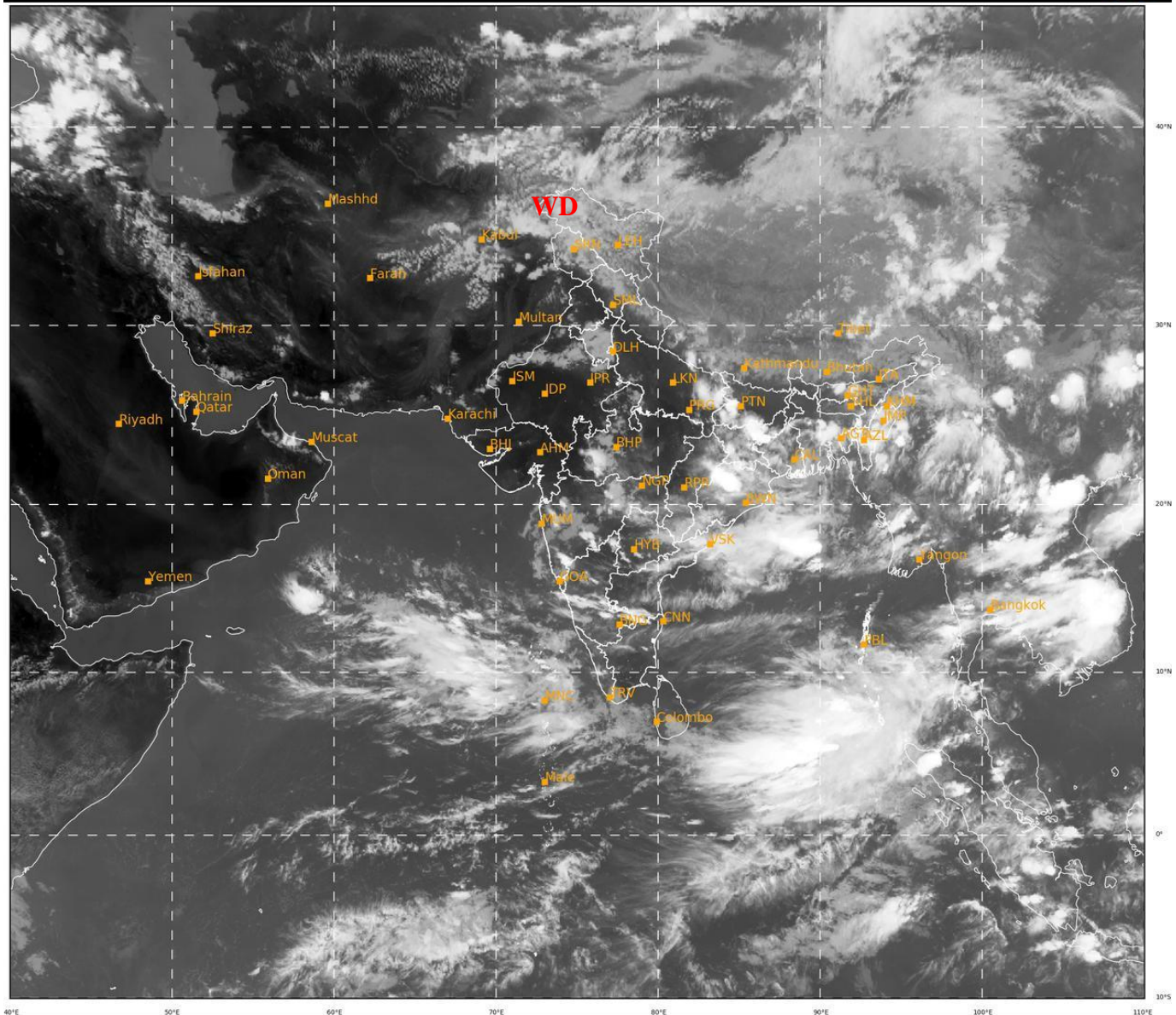




**SATELLITE BULLETIN BASED ON SATELLITE
IMAGERIES AND PRODUCTS**
01.06.2022 TIME 1200 UTC

SAT : INSAT-3D IMG
IMG_TIR1 10.8 um
LIC Mercator

01-06-2022/(1200 to 1226) GMT
01-06-2022/(1730 to 1756) IST



291

940

IMD, DELHI

TCIN50 DEMS 011200

SATELLITE BULLETIN BASED ON INSAT-3D PIC OF 011200 UTC (.)

REGION COVERED BETWEEN LAT 50.0°N TO 30.0°S AND LONG 40.0°E TO 125.0°E (.)

SALIENT FEATURES:-

WESTERN DISTURBANCE (WD):-

SCT MULTILAYERED CLOUDS OVER N PAK J&K LADAKH N HP & N/HOOD IN ASSW **WD OVER THE AREA (.)**

THUNDERSTORM / CONVECTIVE ACTIVITY:-

THUNDERSTORM/CONVECTIVE ACTIVITIES OBSERVED OVER NE LADAKH EXT E PARTS OF E UP SW BHR JHRKND ORS GWB ASSAM E ARUPR NAGA MANI MIZO TRP W MP MAHA S TLNGN NIK N SIK N& S AP C KER LKSDP ILS ANDAMAN& NICOBAR ILS (.)

DUST :-

DATA NOT AVAILABLE (.)

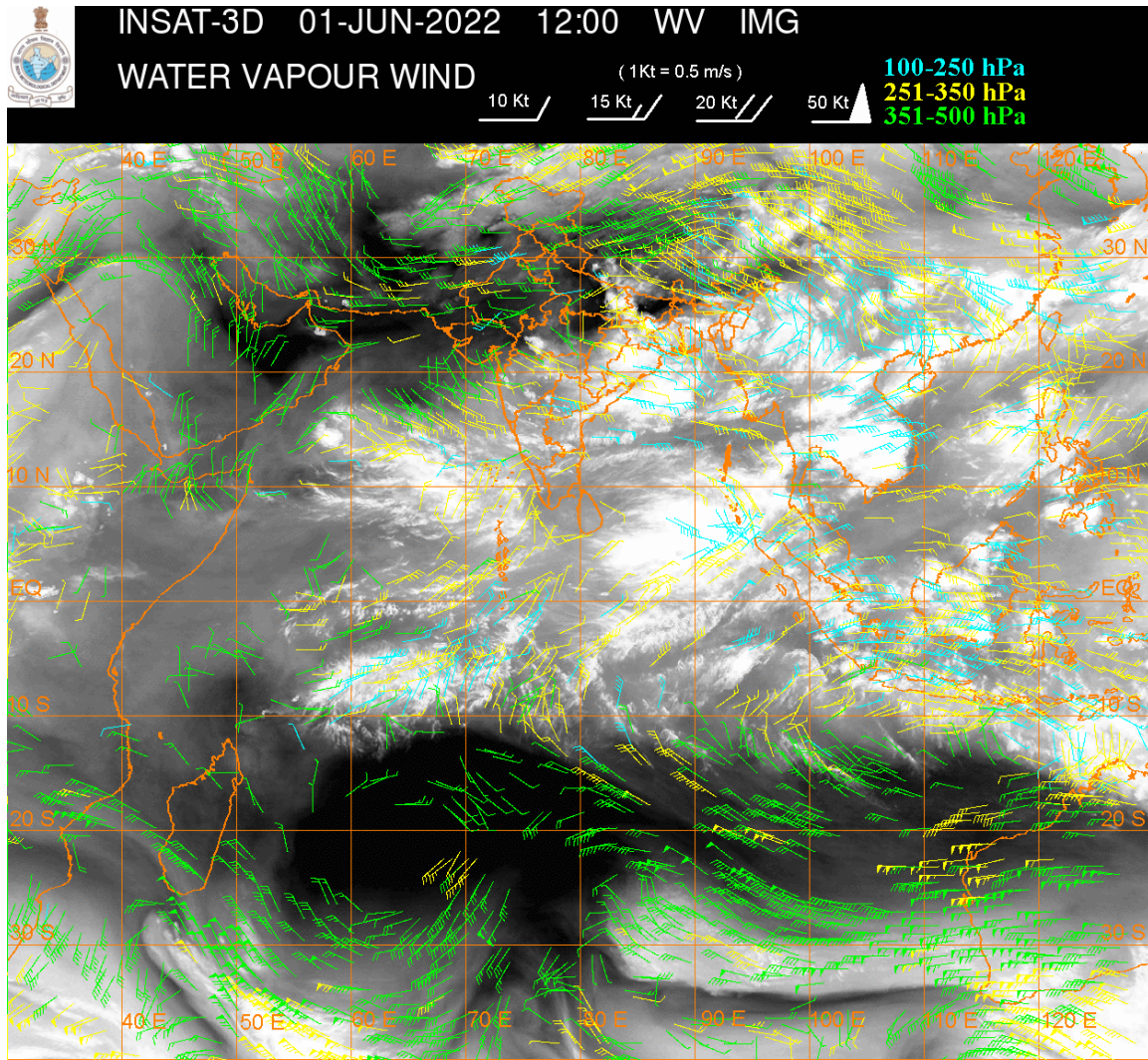
PRECIPITATION NOWCASTING:-

(BASED ON SCOPE NOWCASTING TOOL AT 1100 UTC AT A LEAD TIME OF 03 HRS (MM/HR):-

RAINFALL UP TO 10-20 MM LIKELY OVER NE UP NE JHRKND N ORS S GWB S MANI N MIZO N AP (.)

RAINFALL UP TO 5-10 MM LIKELY OVER W MP C MADHYA MAHA E MEGHA W&S ASSAM N TRP N SIK C KER C TN LKLSDP & NICOBAR ILS (.)

RAINFALL UP TO 0.5-5 MM LIKELY OVER LADAKH SW TLNGN C & S AP NW TN (.)



CLOUDS DESCRIPTION WITHIN INDIA:-

NORTH:-

SCT LOW/MED CLOUDS WITH EMBDD INT TO V INT CONVTN OVER E UP (MINIMUM CTT MINUS 71 DEG C) (.) SCT LOW/MED CLOUDS WITH EMBDD WK TO MOD CONVTN OVER LEDAKH J&K N HP N UTRKND EXT S PJB HARY EXT SW UP (.)SCT LOW/MED CLOUDS OVER S HP S UTRKND EXT SW PJB SW UP (.)

EAST:-

SCT LOW/MED CLOUDS WITH EMBDD ISOL INT TO V INT CONVTN OVER SW BHR C JHRKND ADJ W GWB NW ORS C ASSAM N MIZO (MINIMUM CTT MINUS 72 TO 93 DEG C)(.) SCT LOW/MED CLOUDS WITH EMBDD MOD TO INT CONVTN OVER NE CHTGH REST ORS REST GWB E ARUPR S NAGA MANI TRP (.) SCT LOW/MED CLOUDS WITH EMBDD ISOL WK TO MOD CONVTN OVER REST JHRKND REST CHTGH SKM MEGHA REST ASSAM REST ARUPR (.) SCT LOW/MED CLOUDS OVER REST BHR SHWB (.)

WEST:-

SCT LOW/MED CLOUDS WITH EMBDD MOD TO INT CONVTN OVER SW MP M MAHA W VID MRTHWD (.) SCT LOW/MED CLOUDS WITH EMBDD ISOL WK TO MOD CONVTN OVER N RAJ NC MP REST MAHA (.) SCT LOW/MED CLOUDS OVER SE RAJ C GUJ REST MP REST MAHA GOA (.)

SOUTH:-

SCT LOW/MED CLOUDS WITH EMBDD INT TO V INT CONVTN OVER N SIK S AP (.) SCT LOW/MED CLOUDS WITH EMBDD MOD TO INT CONVTN OVER N NIK N COTL AP LKSDP ILS S ANDAMAN & NICOBAR ILS AND ISOL WK TO MOD CONVTN OVER TLNGN REST KRNTL REST AP KER N TN (.) SCT LOW/MED CLOUDS OVER REST PARTS OF THE REGION (.)

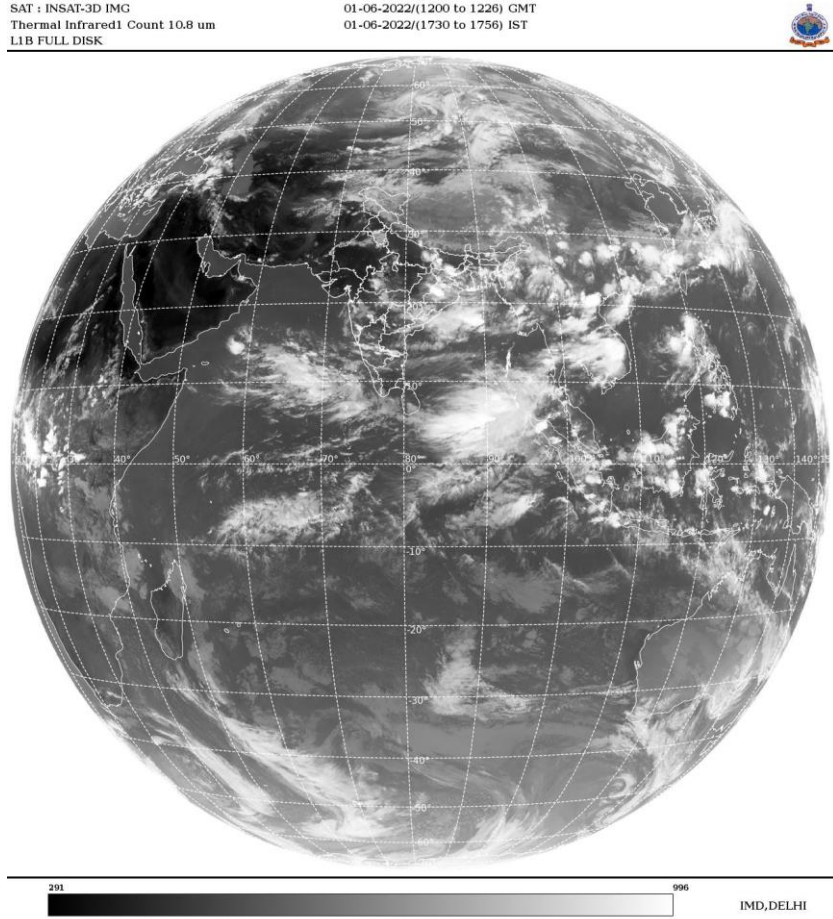
ARABIAN SEA:-

SCT LOW/MED CLOUDS WITH EMBDD INT TO V INT CONVTN OVER S ADJ C ARSEA MALDIVES (.) SCT LOW/MED CLOUDS WITH EMBDD MOD TO INT CONVTN OVER COMORIN AREAS

BAY OF BENGAL & ANDAMAN SEA:-

SCT LOW/MED CLOUDS WITH EMBDD INT TO V INT CONVTN OVER NE BAY ADJ C BAY & S BAY S ANDAMAN SEA (.) SCT LOW/MED CLOUDS WITH EMBDD ISOL WK TO MOD CONVTN OVER REST BAY N ANDAMAN SEA(.)

CLOUDS DESCRIPTION OUTSIDE INDIA:-



SCT LOW/MED CLOUDS WITH EMBDD MOD TO INT CONVTN OVER S SRI LANKA MALDIVES N TIBET CHINA MYNMAR THAILAND GULF OF THAILAND CAMBODIA LAOS VIETNAM SUMATRA MALACCA MALAY PENINSULA BORNEO SOUTH CHINA SEA GULF OF TONKIN HAINAN JAVA ILS & SEA CELEBES ILS & SEA PHILIPPINES E CHINA SEA S YELLOW SEA AND OVER INDIAN OCEAN BET 5.0N TO LAT 10.0S LONG 55.0E TO 120.0E (.)

TOO 01/1840 HRS IST=

NNNN

LEGEND:-

REGION	NORTH	J&K HP PJB HARY DLH UP UTRKND
	EAST	BHR JHRKND CHTGH OR WB SKM NORTH- EAST STATES
	WEST	RAJ MP GUJ MAHA GOA
	SOUTH	TLNGN AP KRNTK KER TN LKSDP ANDAMAN & NICOBAR ILS

CLOUD DISTRIBUTION	ISOL	ISOLATED (LESS THAN 25%)	
	SCT	SCATTERED (25 TO 50%)	
	BKN	BROKEN (51 TO 75%)	
	SLD	SOLID (GREATER THAN 75%)	
CLOUDS TOP TEMPERATURE	CTT	CLOUD TOP TEMPERATURE	
CONVECTION	WK CONVTN	WEAK CONVECTION (CTT GREATER THAN -25°C)	
	MOD CONVTN	MODERATE CONVECTION (CTT BETWEEN -25°C TO -40°C)	
	INT CONVTN	INTENSE CONVECTION (CTT BETWEEN -41°C TO -70°C)	
	V INT CONVTN	VERY INTENSE CONVECTION (CTT LESS THAN -70°C)	
METEOROLOGICAL SUB-DIVISIONS, STATES & UNION TERRITORIES	ARUPR	ARUNACHAL PRADESH	
	BHR	BIHAR	
	CHTGH	CHHATTISGARH	
	COTL AP	COASTAL ANDHRA PRADESH	
	COTL KRNTK	COASTAL KARNATAKA	
	COTL ORS	COASTAL ORISSA	
	GUJ	GUJARAT	
	GWB	GANGETIC WEST BENGAL	
	HARY	HARYANA	
	DLH	DELHI	
	HP	HIMACHAL PRADESH	
	J&K	JAMMU AND KASHMIR	
	JHRKND	JHARKHAND	
	KER	KERALA	
	KKN	KONKAN	
	LKSDP	LAKSHADWEEP	
	M MAHA	MADHYA MAHARASHTRA	
	MAHA	MAHARASHTRA	
	MANI	MANIPUR	
	MEGHA	MEGHALAYA	
	MIZO	MIZORAM	
	MP	MADHYA PRADESH	
		MRTHWD	MARATHWADA
		NAGA	NAGALAND
N COTL AP		NORTH COASTAL ANDHRA PRADESH	
NIK		NORTH INTERIOR KARNATAKA	
ORS		ORISSA	
PJB		PUNJAB	
RAJ		RAJASTHAN	
RYLSM		RAYALASEEMA	
SAU & KUTCH		SAURASHTRA & KUTCH	
SHWB		SUB-HIMALAYAN WEST BENGAL	
SIK		SOUTH INTERIOR KARNATAKA	
SKM		SIKKIM	

	TLNGN	TELANGANA
	TN	TAMIL NADU
	TRP	TRIPURA
	UP	UTTAR PRADESH
	UTRKND	UTTARAKHAND
	VID	VIDHARBHA
	SHWB	SUB HIMALAYAN WEST BENGAL
	GWB	GANGETIC WEST BENGAL
	ARSEA	ARABIAN SEA
	ILS	ISLANDS
MISCELLANEOUS	ASSW	IN ASSOCIATION WITH
	ASSTD	ASSOCIATED
	LLC	LOW LEVEL CIRCULATION
	EMBDD	EMBEDDED
	N/HOOD	NEIGHBOURHOOD
	EXT	EXTREME