

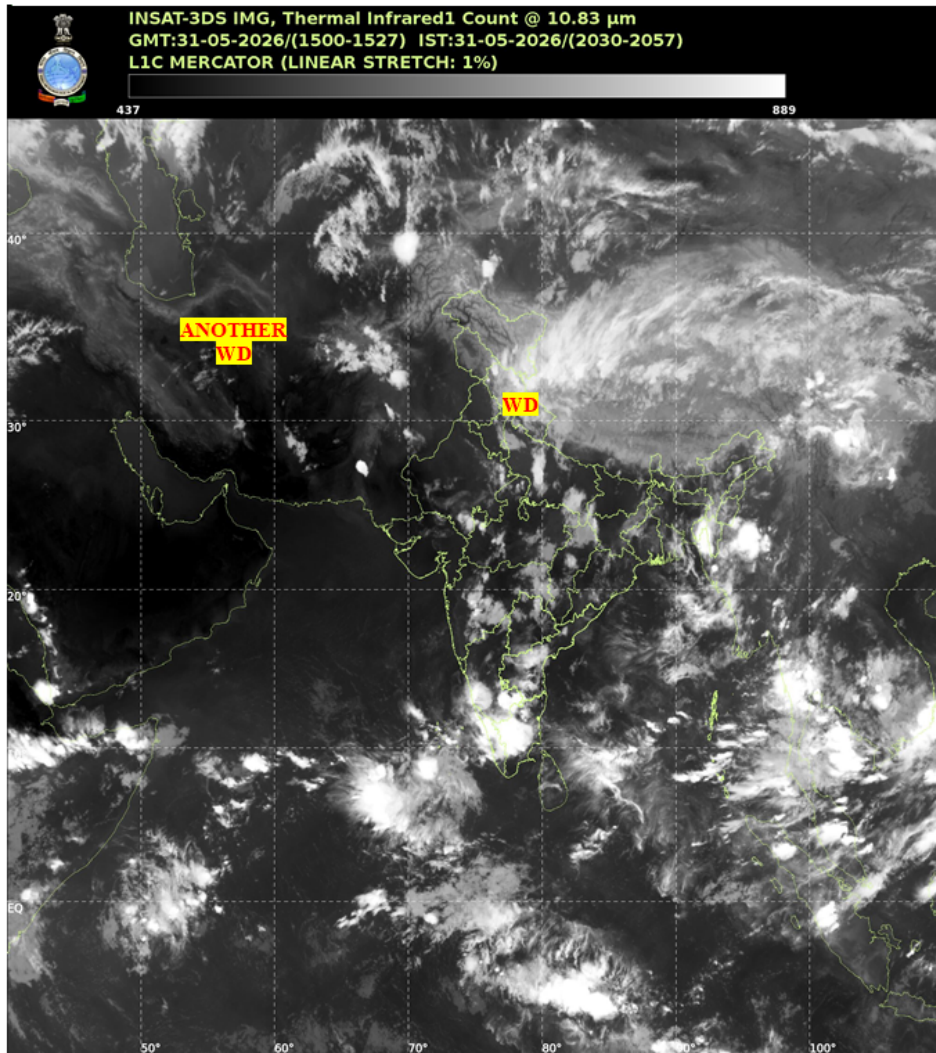


भारत मौसम विज्ञान विभाग  
पृथ्वी विज्ञान मंत्रालय  
India Meteorological Department  
Ministry of Earth Sciences



**SATELLITE BULLETIN BASED ON SATELLITE IMAGERIES AND PRODUCTS**

Date: 2026-05-31 Time: 15:00:00 UTC



TCIN50 DEMS 311500

SATELLITE BULLETIN BASED ON INSAT-3DS PIC OF 311500 UTC (.)

REGION COVERED BETWEEN LAT 50.0°N TO 35.0°S AND LONG 40.0°E TO 125.0°E (.)

**SALIENT FEATURES:**

**WESTERN DISTURBANCE (WD):-**

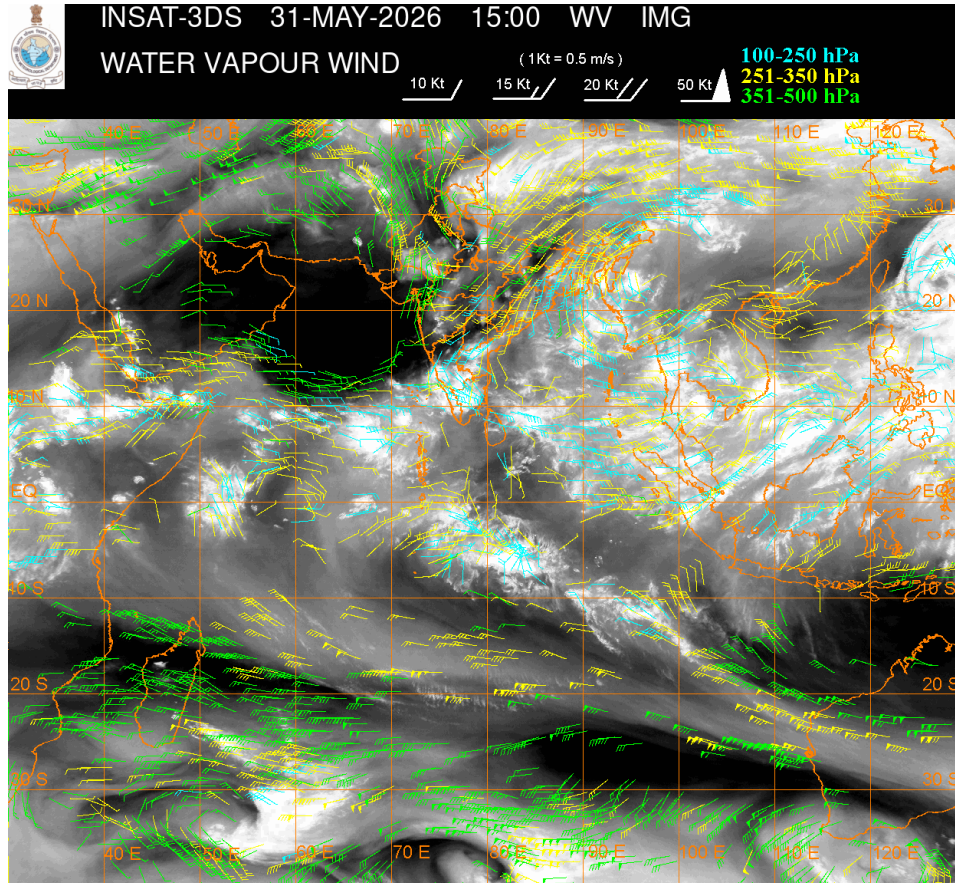
SCT TO BKN MULTILAYERED CLOUDS OVER LADAKH J&K HP UTRKND PJB HARY DLH RAJ MP UP  
NEPAL TIBET ADJ CHINA IN ASSW WD OVER THE AREA (.)

SCT MULTILAYERED CLOUDS OVER IRAN AND N/HOOD IN ASSW ANOTHER WD OVER THE AREA (.)

**CONVECTIVE / THUNDERSTORM ACTIVITY:-**

**INTENSE TO VERY INTENSE CONVECTIVE / THUNDERSTORM ACTIVITY OVER COTL KRNTK SIK KER TN (MINIMUM CTT MINUS 70-90 DEGREE CELSIUS) (.)**

**MODERATE TO INTENSE CONVECTIVE / THUNDERSTORM ACTIVITY OVER LADAKH HP UTRKND UP NORTH-EAST STATES E RAJ MP MADHYA MAHA MRTHWD VID TLNGN RYLSM S COTL AP LKSDP ILS AREA ANDAMAN & NICOBAR ILS AREA (MINIMUM CTT MINUS 40-70 DEGREE CELSIUS) (.)**



**CLOUD DESCRIPTION WITHIN INDIA:**

**NORTH:**

**SCT TO BKN LOW/MED CLOUDS WITH EMBDD MOD TO INT CONVTN OVER LADAKH HP UTRKND UP (.) SCT LOW/MED CLOUDS WITH EMBDD ISOL WK TO MOD CONVTN OVER J&K E PJB E HARY DLH (.) ISOL LOW/MED CLOUDS OVER W PJB W HARY (.)**

**EAST:**

**SCT LOW/MED CLOUDS WITH EMBDD MOD TO INT CONVTN OVER NORTH-EAST STATES (.) SCT LOW/MED CLOUDS WITH EMBDD ISOL WK TO MOD CONVTN OVER BHR JHRKND CHTGH ORS GWB SHWB SKM & BD (.)**

**WEST:**

**SCT LOW/MED CLOUDS WITH EMBDD MOD TO INT CONVTN OVER E RAJ MP MADHYA MAHA MRTHWD VID (.) SCT LOW/MED CLOUDS WITH EMBDD ISOL WK TO MOD CONVTN OVER W RAJ N GUJ (.) ISOL LOW/MED CLOUDS OVER S GUJ KKN GOA (.)**

**SOUTH:**

**SCT TO BKN LOW/MED CLOUDS WITH EMBDD INT TO V INT CONVTN OVER COTL KRNTK SIK KER TN (.) SCT LOW/MED CLOUDS WITH EMBDD MOD TO INT CONVTN OVER TLNGN RYLSM S COTL AP LKSDP ILS AREA ANDAMAN & NICOBAR ILS AREA AND ISOL WK TO MOD CONVTN OVER NIK N COTL AP (.)**

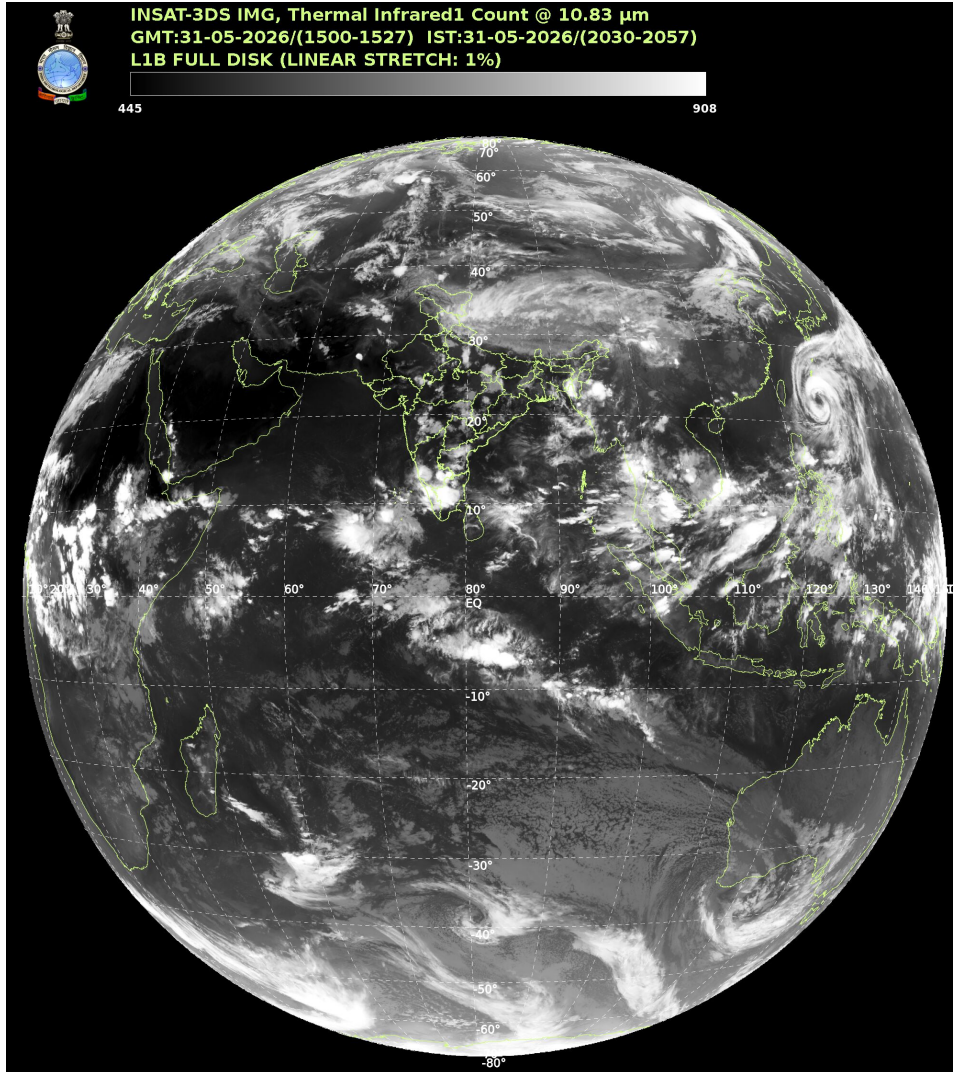
**ARABIAN SEA:**

SCT TO BKN LOW/MED CLOUDS WITH EMBDD MOD TO INT CONVTN OVER SOUTH ARSEA LKSDP ILS AREA & MALDIVES AREA (.)

**BAY OF BENGAL & ANDAMAN SEA:**

SCT LOW/MED CLOUDS WITH EMBDD MOD TO INT CONVTN OVER BAY ANDAMAN SEA GULF OF MARTABAN TENASSERIM COAST AND ARAKAN COAST (.)

**CLOUD DESCRIPTION OUTSIDE INDIA:**



SCT LOW/MED CLOUDS WITH EMBDD MOD TO INT CONVTN OVER SRI LANKA MALDIVES AREA PAK NEPAL BHUTAN TIBET CHINA YELLOW SEA EAST CHINA SEA MYANMAR THAILAND GULF OF THAILAND CAMBODIA LAOS VIETNAM SUMATRA STR OF MALACCA MALAYSIA BORNEO SOUTH CHINA SEA JAVA ILS & SEA CELEBES ILS & SEA PHILIPPINES SULU SEA MADAGASCAR AND OVER INDIAN OCEAN BET LAT 5.0N TO 15.0S LONG 40.0E TO 105.0E AND BET LAT 20.0S TO 35.0S LONG 50.0E TO 90.0E (.)

T00 31/2130 HRS IST

NNNN

**LEGEND**

REGION

<b>NORTH</b>	<b>J&amp;K HP UTRKND PJB HARY DLH UP</b>
<b>EAST</b>	<b>BHR JHRKND CHTGH ORS WB SKM NORTH-EAST STATES</b>
<b>WEST</b>	<b>RAJ MP GUJ MAHA GOA</b>
<b>SOUTH</b>	<b>TLNGN AP KRNTK KER TN LKSDP ANDAMAN &amp; NICOBAR ILS</b>
<b>CLOUD DISTRIBUTION</b>	
<b>ISOL</b>	<b>ISOLATED (LESS THAN 25%)</b>
<b>SCT</b>	<b>SCATTERED (25 TO 50%)</b>
<b>BKN</b>	<b>BROKEN (51 TO 75%)</b>
<b>SLD</b>	<b>SOLID (GREATER THAN 75%)</b>
<b>CLOUDS TOP TEMPERATURE</b>	
<b>CTT</b>	<b>CLOUD TOP TEMPERATURE</b>
<b>CONVECTION</b>	
<b>WK CONVTN</b>	<b>WEAK CONVECTION (CTT GREATER THAN -25°C)</b>
<b>MOD CONVTN</b>	<b>MODERATE CONVECTION (CTT BETWEEN -25°C TO -40°C)</b>
<b>INT CONVTN</b>	<b>INTENSE CONVECTION (CTT BETWEEN -41°C TO -70°C)</b>
<b>V INT CONVTN</b>	<b>VERY INTENSE CONVECTION (CTT LESS THAN -70°C)</b>
<b>METEOROLOGICAL SUB-DIVISIONS, STATES &amp; UNION TERRITORIES</b>	
<b>J&amp;K</b>	<b>JAMMU AND KASHMIR</b>
<b>HP</b>	<b>HIMACHAL PRADESH</b>
<b>UTRKND</b>	<b>UTTARAKHAND</b>
<b>PJB</b>	<b>PUNJAB</b>
<b>HARY</b>	<b>HARYANA</b>
<b>DLH</b>	<b>DELHI</b>
<b>BHR</b>	<b>BIHAR</b>
<b>JHRKND</b>	<b>JHARKHAND</b>
<b>CHTGH</b>	<b>CHHATTISGARH</b>
<b>ORS</b>	<b>ORISSA</b>
<b>GWB</b>	<b>GANGETIC WEST BENGAL</b>
<b>SHWB</b>	<b>SUB-HIMALAYAN WEST BENGAL</b>
<b>SKM</b>	<b>SIKKIM</b>
<b>ARUPR</b>	<b>ARUNACHAL PRADESH</b>
<b>ASSAM</b>	<b>ASSAM</b>
<b>MEGHA</b>	<b>MEGHALAYA</b>
<b>MANI</b>	<b>MANIPUR</b>

<b>MIZO</b>	<b>MIZORAM</b>
<b>TRP</b>	<b>TRIPURA</b>
<b>RAJ</b>	<b>RAJASTHAN</b>
<b>MP</b>	<b>MADHYA PRADESH</b>
<b>GUJ</b>	<b>GUJARAT</b>
<b>SAU &amp; KUTCH</b>	<b>SAURASHTRA &amp; KUTCH</b>
<b>MAHA</b>	<b>MAHARASHTRA</b>
<b>M MAHA</b>	<b>MADHYA MAHARASHTRA</b>
<b>MRTHWD</b>	<b>MARATHWADA</b>
<b>VID</b>	<b>VIDARBHA</b>
<b>KKN</b>	<b>KONKAN</b>
<b>TLNGN</b>	<b>TELANGANA</b>
<b>RYLSM</b>	<b>RAYALSEEMA</b>
<b>COTL AP</b>	<b>COASTAL ANDHRA PRADESH</b>
<b>NIK</b>	<b>NORTH INTERIOR KARNATAKA</b>
<b>SIK</b>	<b>SOUTH INTERIOR KARNATAKA</b>
<b>COTL KRNTK</b>	<b>COASTAL KARNATAKA</b>
<b>KER</b>	<b>KERALA</b>
<b>TN</b>	<b>TAMILNADU</b>
<b>LKSDP</b>	<b>LAKSHADWEEP</b>
<b>ILS</b>	<b>ISLANDS</b>
<b>ARSEA</b>	<b>ARABIAN SEA</b>
<b>MISCELLANEOUS</b>	
<b>ASSW</b>	<b>IN ASSOCIATION WITH</b>
<b>ASSTD</b>	<b>ASSOCIATED</b>
<b>LLC</b>	<b>LOW LEVEL CIRCULATION</b>
<b>EMBDD</b>	<b>EMBEDDED</b>
<b>N/HOOD</b>	<b>NEIGHBOURHOOD</b>
<b>EXT</b>	<b>EXTREME</b>