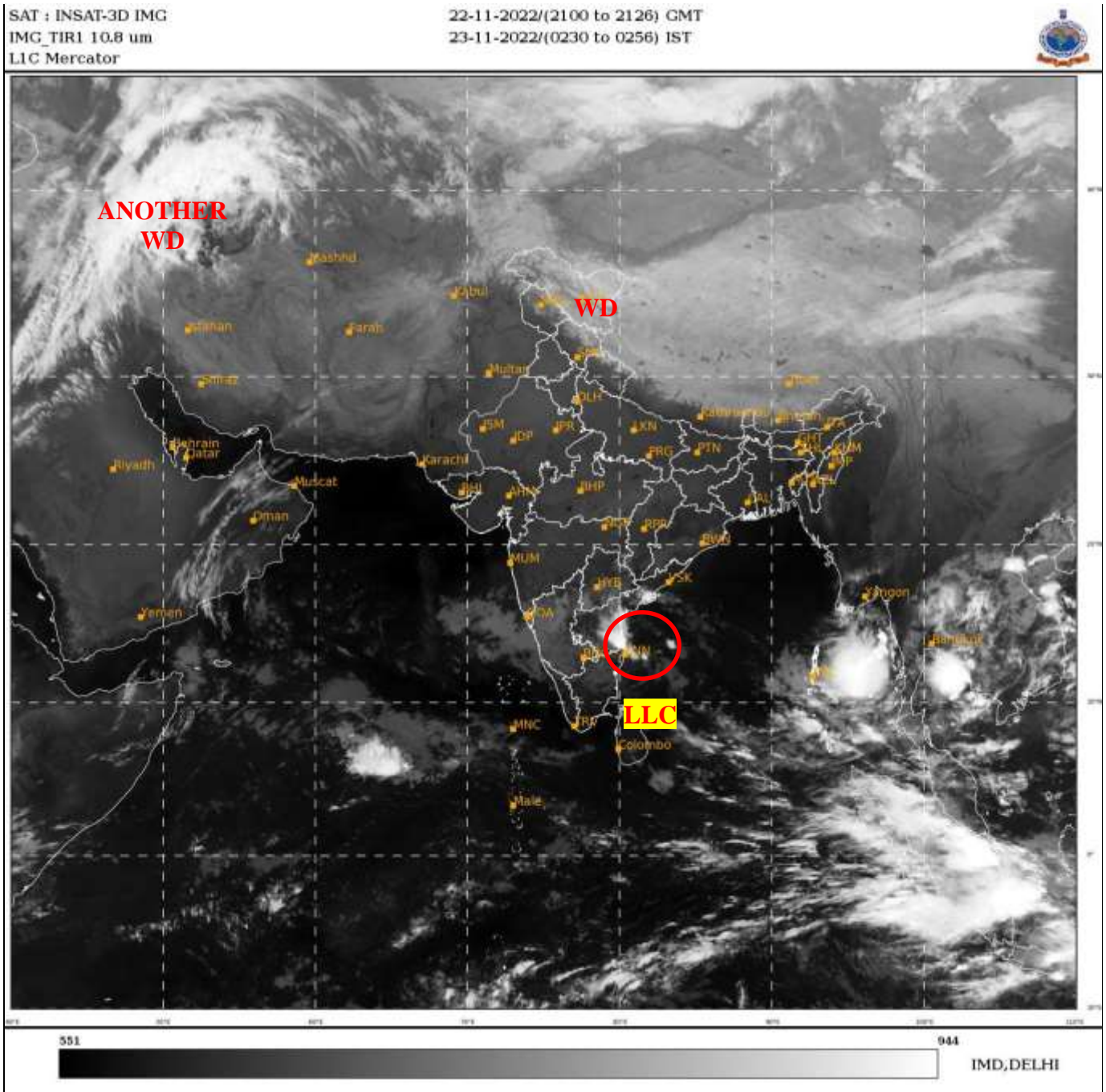




**SATELLITE BULLETIN BASED ON SATELLITE  
IMAGERIES AND PRODUCTS**  
**22.11.2022 TIME 2100 UTC**



TCIN50 DEMS 222100

SATELLITE BULLETIN BASED ON INSAT-3D PIC OF 222100 UTC (.)

REGION COVERED BETWEEN LAT 50.0°N TO 35.0°S AND LONG 40.0°E TO 125.0°E (.)

**SALIENT FEATURES:-**

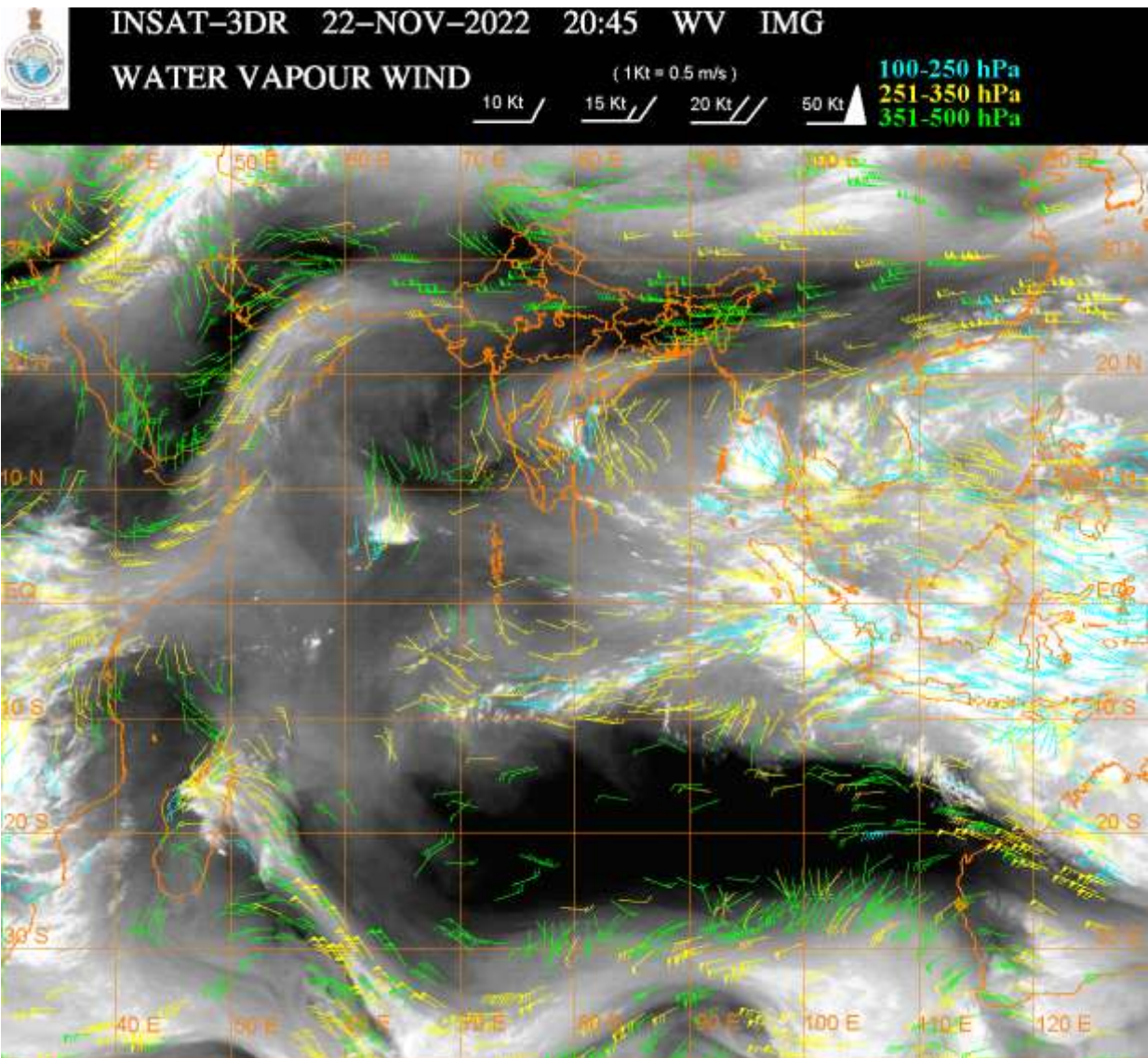
**LOW LEVEL CIRCULATION OVER WC ADJ SW BAY AND N/HOOD:-**

LOW LEVEL CIRCULATION (LLC) OVER WC ADJ SW BAY & N/HOOD (.) ASSTD SCT TO BKN LOW/MED CLOUDS WITH EMBDD INT TO V INT CONVTN OVER WC BAY ADJ S AP COAST E RAYALASEEMA (MINIMUM CTT MINUS 90 DEGREE CEL) AND MOD TO INT CONVTN OVER C COTL AP (.)

**WESTERN DISTURBANCE (WD):-**

SCT MULTILAYERED CLOUDS OVER LADAKH TIBET ADJ CHINA IN ASSW WD OVER THE AREA (.)

SCT MULTILAYERED CLOUDS OVER CASPIAN SEA NW IRAN & N/HOOD IN ASSW ANOTHER WD OVER THE AREA (.)



**CLOUDS DESCRIPTION WITHIN INDIA:-**

**NORTH:-**

SCT LOW/MED CLOUDS WITH EMBDD MOD TO INT CONVTN OVER NE LADAKH (.) SCT LOW/MED CLOUDS WITH EMBDD ISOL WK TO MOD CONVTN OVER REST LADAKH J&K N HP N UTRKND (.)

**EAST:-**

SCT LOW/MED CLOUDS WITH EMBDD WK CONVTN OVER S CHTGH NE ORS SKM ARUPR (.) SCT LOW/MED CLOUDS OVER N CHTGH REST ORS S GWB REST NE STATES (.)

**WEST:-**

SCT LOW/MED CLOUDS WITH EMBDD WK CONVTN OVER SE VID (.) SCT LOW/MED CLOUDS OVER SW & E MP REST MAHA GOA (.)

**SOUTH:-**

SCT LOW/MED CLOUDS WITH EMBDD INT TO V INT CONVTN OVER E RYLSM C & S COTL AP (MINIMUM **CTT MINUS 90** DEG CEL) (.) SCT LOW/MED CLOUDS WITH EMBDD MOD TO INT CONVTN OVER NICOBAR ILS (.) SCT LOW/MED CLOUDS WITH EMBDD WK TO MOD CONVTN OVER NIK TLNGN W RYLSM EXT NE TN ANDAMAN ILS (.) SCT LOW/MED CLOUDS OVER COTL KRNTK SIK KER REST TN (.)

**ARABIAN SEA:-**

SCT LOW/MED CLOUDS WITH EMBDD MOD TO INT CONVTN OVER CENTRAL PARTS OF SOUTH ARSEA (.) SCT LOW/MED CLOUDS WITH EMBDD ISOL WK CONVTN OVER CENTRAL ARSEA AND REST SOUTH ARSEA (.)

**BAY OF BENGAL & ANDAMAN SEA:-**

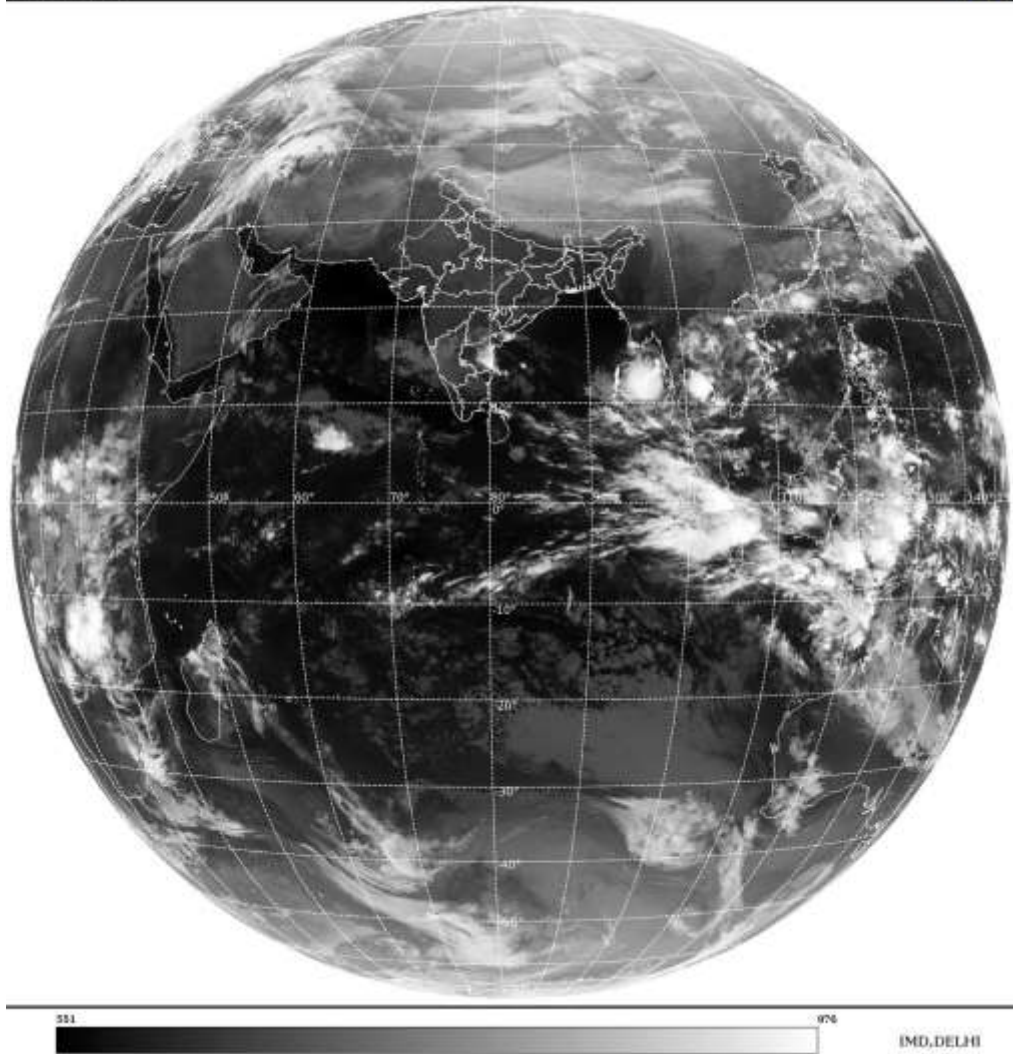
SCT TO BKN LOW/MED CLOUDS WITH EMBDD INT TO V INT CONVTN OVER WC BAY ADJ S AP COAST & ANDAMAN SEA (.) SCT LOW/MED CLOUDS WITH EMBDD MOD TO INT CONVTN OVER REST WC BAY AND SOUTH BAY (.)



**CLOUDS DESCRIPTION OUTSIDE INDIA:-**

SAT : INSAT-3D IMG  
Thermal Infrared1 Count 10.8 um  
LIB FULL DISK

22-11-2022/(2100 to 2126) GMT  
23-11-2022/(0230 to 0256) IST



**SCT LOW/MED CLOUDS WITH EMBDD MOD TO INT CONVTN OVER N SRI LANKA TIBET CHINA YELLOW SEA E CHINA SEA TAIWAN EXT S MYANMAR S THAILAND GULF OF THAILAND CAMBODIA LAOS VIETNAM GULF OF TONKIN HAINAN SUMATRA STR OF MALACCA MALAYSIA BORNEO SOUTH CHINA SEA JAVA ILS & SEA CELEBES ILS & SEA PHILIPPINES SULU SEA N MADAGASCAR MOZAMBIQUE CHANNEL AND OVER INDIAN OCEAN BET LAT 5.0N TO 20.0S LONG 50.0E TO 125.0E (.)**

**TOO 23/0350 HRS IST=**

**NNNN**

**LEGEND:-**

<b>REGION</b>	<b>NORTH</b>	<b>J&amp;K HP PJB HARY DLH UP UTRKND</b>
	<b>EAST</b>	<b>BHR JHRKND CHTGH OR WB SKM NORTH- EAST STATES</b>
	<b>WEST</b>	<b>RAJ MP GUJ MAHA GOA</b>
	<b>SOUTH</b>	<b>TLNGN AP KRNTK KER TN LKSDP ANDAMAN &amp; NICOBAR ILS</b>

<b>CLOUD DISTRIBUTION</b>	<b>ISOL</b>	<b>ISOLATED (LESS THAN 25%)</b>
	<b>SCT</b>	<b>SCATTERED (25 TO 50%)</b>
	<b>BKN</b>	<b>BROKEN (51 TO 75%)</b>
	<b>SLD</b>	<b>SOLID (GREATER THAN 75%)</b>
<b>CLOUDS TOP TEMPERATURE</b>	<b>CTT</b>	<b>CLOUD TOP TEMPERATURE</b>

<b>CONVECTION</b>	<b>WK CONVTN</b>	<b>WEAK CONVECTION (CTT GREATER THAN -25°C)</b>	
	<b>MOD CONVTN</b>	<b>MODERATE CONVECTION (CTT BETWEEN -25°C TO -40°C)</b>	
	<b>INT CONVTN</b>	<b>INTENSE CONVECTION (CTT BETWEEN -41°C TO -70°C)</b>	
	<b>V INT CONVTN</b>	<b>VERY INTENSE CONVECTION (CTT LESS THAN -70°C)</b>	
<b>METEOROLOGICAL SUB-DIVISIONS, STATES &amp; UNION TERRITORIES</b>	<b>ARUPR</b>	<b>ARUNACHAL PRADESH</b>	
	<b>BHR</b>	<b>BIHAR</b>	
	<b>CHTGH</b>	<b>CHHATTISGARH</b>	
	<b>COTL AP</b>	<b>COASTAL ANDHRA PRADESH</b>	
	<b>COTL KRNTK</b>	<b>COASTAL KARNATAKA</b>	
	<b>COTL ORS</b>	<b>COASTAL ORISSA</b>	
	<b>GUJ</b>	<b>GUJARAT</b>	
	<b>GWB</b>	<b>GANGETIC WEST BENGAL</b>	
	<b>HARY</b>	<b>HARYANA</b>	
	<b>DLH</b>	<b>DELHI</b>	
	<b>HP</b>	<b>HIMACHAL PRADESH</b>	
	<b>J&amp;K</b>	<b>JAMMU AND KASHMIR</b>	
	<b>JHRKND</b>	<b>JHARKHAND</b>	
	<b>KER</b>	<b>KERALA</b>	
	<b>KKN</b>	<b>KONKAN</b>	
	<b>LKSDP</b>	<b>LAKSHADWEEP</b>	
	<b>M MAHA</b>	<b>MADHYA MAHARASHTRA</b>	
	<b>MAHA</b>	<b>MAHARASHTRA</b>	
	<b>MANI</b>	<b>MANIPUR</b>	
	<b>MEGHA</b>	<b>MEGHALAYA</b>	
	<b>MIZO</b>	<b>MIZORAM</b>	
	<b>MP</b>	<b>MADHYA PRADESH</b>	
		<b>MRTHWD</b>	<b>MARATHWADA</b>
		<b>NAGA</b>	<b>NAGALAND</b>
<b>N COTL AP</b>		<b>NORTH COASTAL ANDHRA PRADESH</b>	
<b>NIK</b>		<b>NORTH INTERIOR KARNATAKA</b>	
<b>ORS</b>		<b>ORISSA</b>	
<b>PJB</b>		<b>PUNJAB</b>	
<b>RAJ</b>		<b>RAJASTHAN</b>	
<b>RYLSM</b>		<b>RAYALASEEMA</b>	
<b>SAU &amp; KUTCH</b>		<b>SAURASHTRA &amp; KUTCH</b>	
<b>SHWB</b>		<b>SUB-HIMALAYAN WEST BENGAL</b>	
<b>SIK</b>		<b>SOUTH INTERIOR KARNATAKA</b>	
<b>SKM</b>		<b>SIKKIM</b>	
<b>TLNGN</b>		<b>TELANGANA</b>	
<b>TN</b>		<b>TAMIL NADU</b>	
<b>TRP</b>		<b>TRIPURA</b>	
<b>UP</b>		<b>UTTAR PRADESH</b>	
<b>UTRKND</b>		<b>UTTARAKHAND</b>	
<b>VID</b>		<b>VIDHARBHA</b>	

	<b>SHWB</b>	<b>SUB HIMALAYAN WEST BENGAL</b>
	<b>GWB</b>	<b>GANGETIC WEST BENGAL</b>
	<b>ARSEA</b>	<b>ARABIAN SEA</b>
	<b>ILS</b>	<b>ISLANDS</b>
<b>MISCELLANEOUS</b>	<b>ASSW</b>	<b>IN ASSOCIATION WITH</b>
	<b>ASSTD</b>	<b>ASSOCIATED</b>
	<b>LLC</b>	<b>LOW LEVEL CIRCULATION</b>
	<b>EMBDD</b>	<b>EMBEDDED</b>
	<b>N/HOOD</b>	<b>NEIGHBOURHOOD</b>
	<b>EXT</b>	<b>EXTREME</b>