

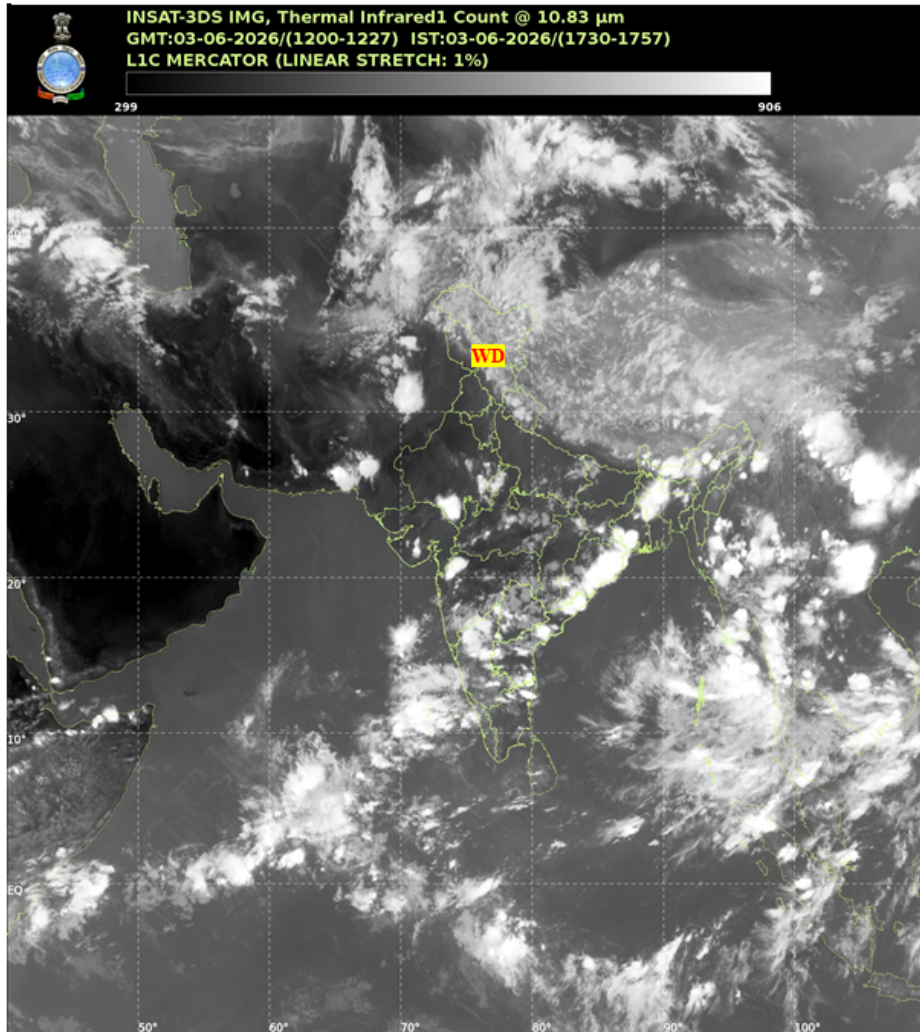


भारत मौसम विज्ञान विभाग
पृथ्वी विज्ञान मंत्रालय
India Meteorological Department
Ministry of Earth Sciences



SATELLITE BULLETIN BASED ON SATELLITE IMAGERIES AND PRODUCTS

Date: 2026-06-03 Time: 12:00:00 UTC



TCIN50 DEMS 031200

SATELLITE BULLETIN BASED ON INSAT-3DS PIC OF 031200 UTC (.)

REGION COVERED BETWEEN LAT 50.0°N TO 35.0°S AND LONG 40.0°E TO 125.0°E (.)

SALIENT FEATURES:

WESTERN DISTURBANCE (WD):-

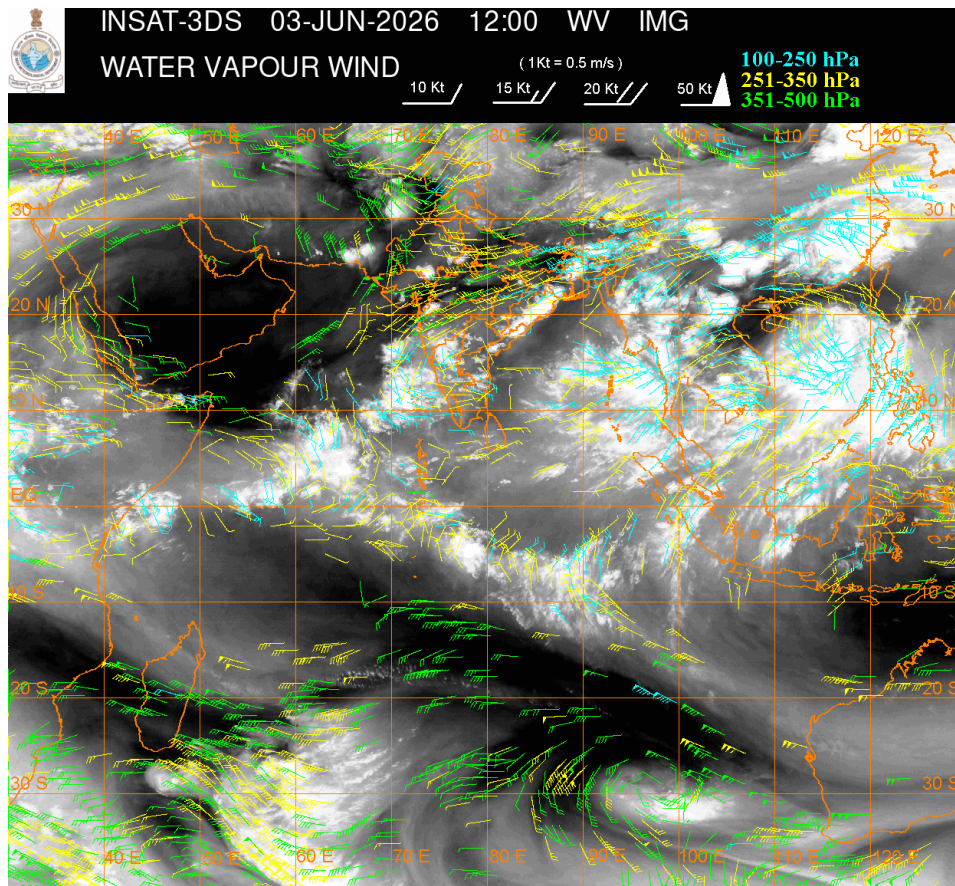
SCT MULTILAYERED CLOUDS OVER AFGAN ADJ N PAK LADAKH J&K HP UTRKND PJB IN ASSW WD OVER THE AREA (.)

CONVECTIVE / THUNDERSTORM ACTIVITY:-

INTENSE TO VERY INTENSE CONVECTIVE / THUNDERSTORM ACTIVITY OVER E RAJ N M MAHA S

GUJ ARUPR ASSAM MEGHA N GWB ORS ADJ CHTGH S JHRKND NIK N COTL AP N COTL TN ANDAMAN & NICOBAR ILS AREA LKSDP ILS AREA (MINIMUM CTT MINUS 70-90 DEGREE CELSIUS) (.)

MODERATE TO INTENSE CONVECTIVE / THUNDERSTORM ACTIVITY OVER LADAKH J&K HP UTRKND MP MRTHWD SIK N KER (MINIMUM CTT MINUS 50-70 DEGREE CELSIUS) (.)



CLOUD DESCRIPTION WITHIN INDIA:

NORTH:

**SCT LOW/MED CLOUDS WITH EMBDD MOD TO INT CONVTN OVER LADAKH J&K HP UTRKND (.)
SCT LOW/MED CLOUDS OVER HARY DLH UP PJB (.)**

EAST:

SCT TO BKN LOW/MED CLOUDS WITH EMBDD INT TO V INT CONVTN OVER ARUPR ASSAM MEGHA N GWB S JHRKND ORS ADJ CHTGH AND MOD TO INT CONVTN OVER SKM REST JHRKND REST CHTGH (.) SCT LOW/MED CLOUDS WITH EMBDD ISOL WK TO MOD CONVTN OVER BHR REST NE STATES (.)

WEST:

SCT LOW/MED CLOUDS WITH EMBDD MOD TO INT CONVTN OVER E RAJ N M MAHA MRTHWD S GUJ AND ISOL WK TO MOD CONVTN OVER MP W RAJ N GUJ(.) SCT LOW/MED CLOUDS OVER REST MAHA (.)

SOUTH:

SCT TO BKN LOW/MED CLOUDS WITH EMBDD INT TO V INT CONVTN OVER NIK N COTL AP N COTL TN ANDAMAN & NICOBAR ILS AREA LKSDP ILS AREA (.) SCT TO BKN LOW/MED CLOUDS WITH EMBDD MOD TO INT CONVTN OVER SIK N KER TLNGN RYLSM (.) SCT LOW/MED CLOUDS WITH EMBDD ISOL WK TO MOD CONVTN OVER S KER (.) SCT LOW/MED CLOUDS OVER REST AP REST TN (.)

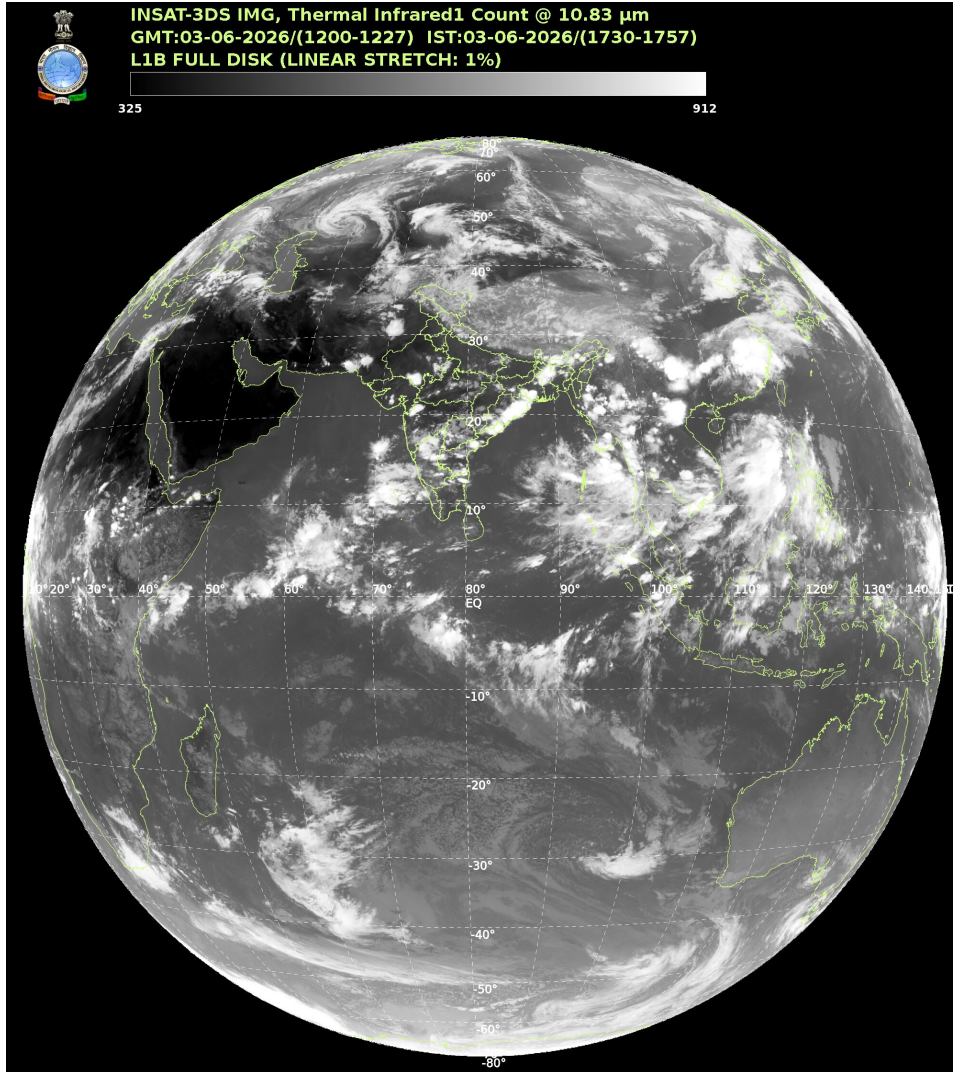
ARABIAN SEA:

SCT TO BKN LOW/MED CLOUDS WITH EMBDD INT TO V INT CONVTN OVER EC ARSEA SE ADJ SW ARSEA & LKSDP ILS AREA (.)

BAY OF BENGAL & ANDAMAN SEA:

SCT TO BKN LOW/MED CLOUDS WITH EMBDD INT TO V INT CONVTN OVER SE & EC BAY ANDAMAN SEA (.)

CLOUD DESCRIPTION OUTSIDE INDIA:



SCT LOW/MED CLOUDS WITH EMBDD MOD TO INT CONVTN OVER MALDIVES AREA N PAK TIBET CHINA YELLOW SEA EAST CHINA SEA MYANMAR THAILAND GULF OF THAILAND CAMBODIA LAOS VIETNAM SUMATRA STR OF MALACCA MALAYSIA BORNEO SOUTH CHINA SEA CELEBES ILS & SEA PHILIPPINES SULU SEA AND OVER INDIAN OCEAN BET LAT 5.0N TO 10.0S LONG 40.0E TO 100.0E AND BET LAT 10.0S TO 35.0S LONG 40.0E TO 110.0E (.)

T00 03/1630 HRS IST

NNNN

LEGEND

| REGION | |
|--------|---|
| NORTH | J&K HP UTRKND PJB HARY DLH UP |
| EAST | BHR JHRKND CHTGH ORS WB SKM NORTH-EAST STATES |

| | |
|---|--|
| WEST | RAJ MP GUJ MAHA GOA |
| SOUTH | TLNGN AP KRNTK KER TN LKSDP ANDAMAN & NICOBAR ILS |
| CLOUD DISTRIBUTION | |
| ISOL | ISOLATED (LESS THAN 25%) |
| SCT | SCATTERED (25 TO 50%) |
| BKN | BROKEN (51 TO 75%) |
| SLD | SOLID (GREATER THAN 75%) |
| CLOUDS TOP TEMPERATURE | |
| CTT | CLOUD TOP TEMPERATURE |
| CONVECTION | |
| WK CONVTN | WEAK CONVECTION (CTT GREATER THAN -25°C) |
| MOD CONVTN | MODERATE CONVECTION (CTT BETWEEN -25°C TO -40°C) |
| INT CONVTN | INTENSE CONVECTION (CTT BETWEEN -41°C TO -70°C) |
| V INT CONVTN | VERY INTENSE CONVECTION (CTT LESS THAN -70°C) |
| METEOROLOGICAL SUB-DIVISIONS, STATES & UNION TERRITORIES | |
| J&K | JAMMU AND KASHMIR |
| HP | HIMACHAL PRADESH |
| UTRKND | UTTARAKHAND |
| PJB | PUNJAB |
| HARY | HARYANA |
| DLH | DELHI |
| BHR | BIHAR |
| JHRKND | JHARKHAND |
| CHTGH | CHHATTISGARH |
| ORS | ORISSA |
| GWB | GANGETIC WEST BENGAL |
| SHWB | SUB-HIMALAYAN WEST BENGAL |
| SKM | SIKKIM |
| ARUPR | ARUNACHAL PRADESH |
| ASSAM | ASSAM |
| MEGHA | MEGHALAYA |
| MANI | MANIPUR |
| MIZO | MIZORAM |
| TRP | TRIPURA |

| | |
|------------------------|---------------------------------|
| RAJ | RAJASTHAN |
| MP | MADHYA PRADESH |
| GUJ | GUJARAT |
| SAU & KUTCH | SAURASHTRA & KUTCH |
| MAHA | MAHARASHTRA |
| M MAHA | MADHYA MAHARASHTRA |
| MRTHWD | MARATHWADA |
| VID | VIDARBHA |
| KKN | KONKAN |
| TLNGN | TELANGANA |
| RYLSM | RAYALSEEMA |
| COTL AP | COASTAL ANDHRA PRADESH |
| NIK | NORTH INTERIOR KARNATAKA |
| SIK | SOUTH INTERIOR KARNATAKA |
| COTL KRNTK | COASTAL KARNATAKA |
| KER | KERALA |
| TN | TAMILNADU |
| LKSDP | LAKSHADWEEP |
| ILS | ISLANDS |
| ARSEA | ARABIAN SEA |
| MISCELLANEOUS | |
| ASSW | IN ASSOCIATION WITH |
| ASSTD | ASSOCIATED |
| LLC | LOW LEVEL CIRCULATION |
| EMBDD | EMBEDDED |
| N/HOOD | NEIGHBOURHOOD |
| EXT | EXTREME |