

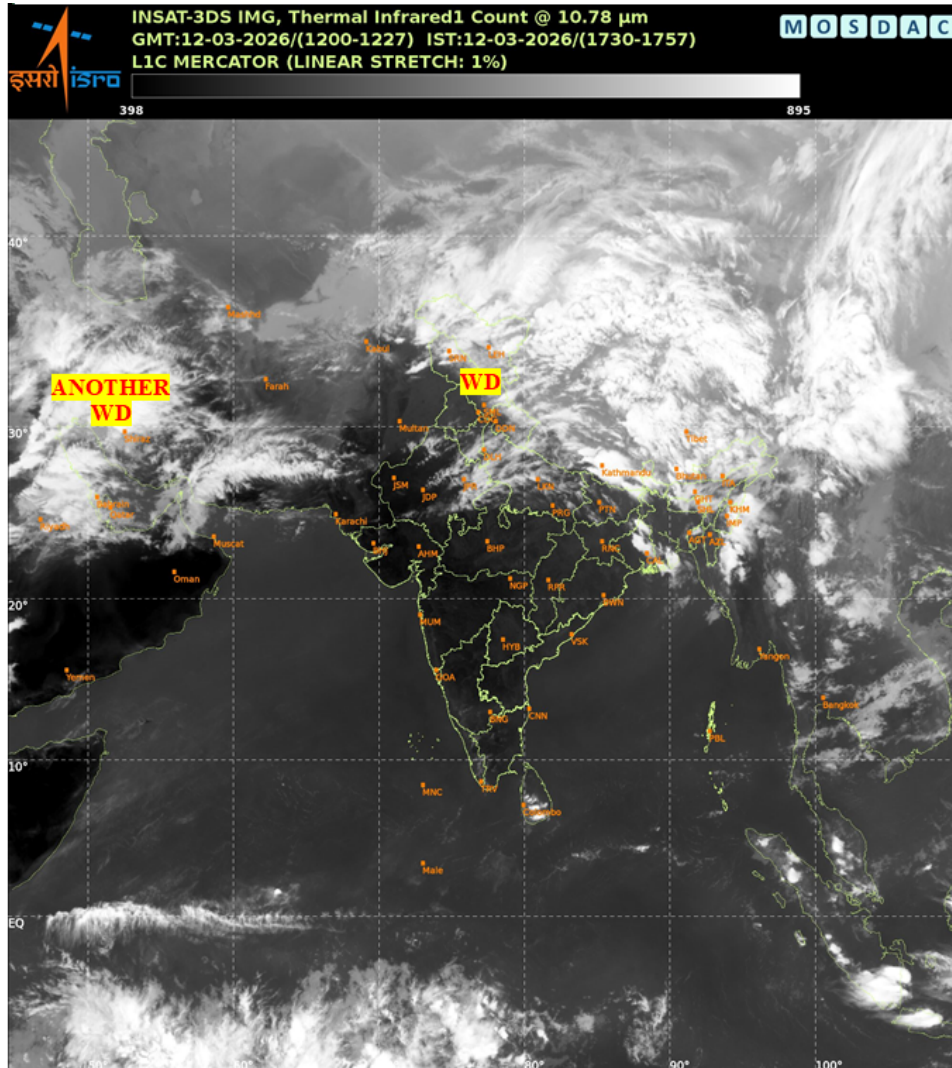


भारत मौसम विज्ञान विभाग
पृथ्वी विज्ञान मंत्रालय
India Meteorological Department
Ministry of Earth Sciences



SATELLITE BULLETIN BASED ON SATELLITE IMAGERIES AND PRODUCTS

Date: 2026-03-12 Time: 12:00:00 UTC



TCIN50 DEMS 121200

SATELLITE BULLETIN BASED ON INSAT-3DS PIC OF 121200 UTC (.)

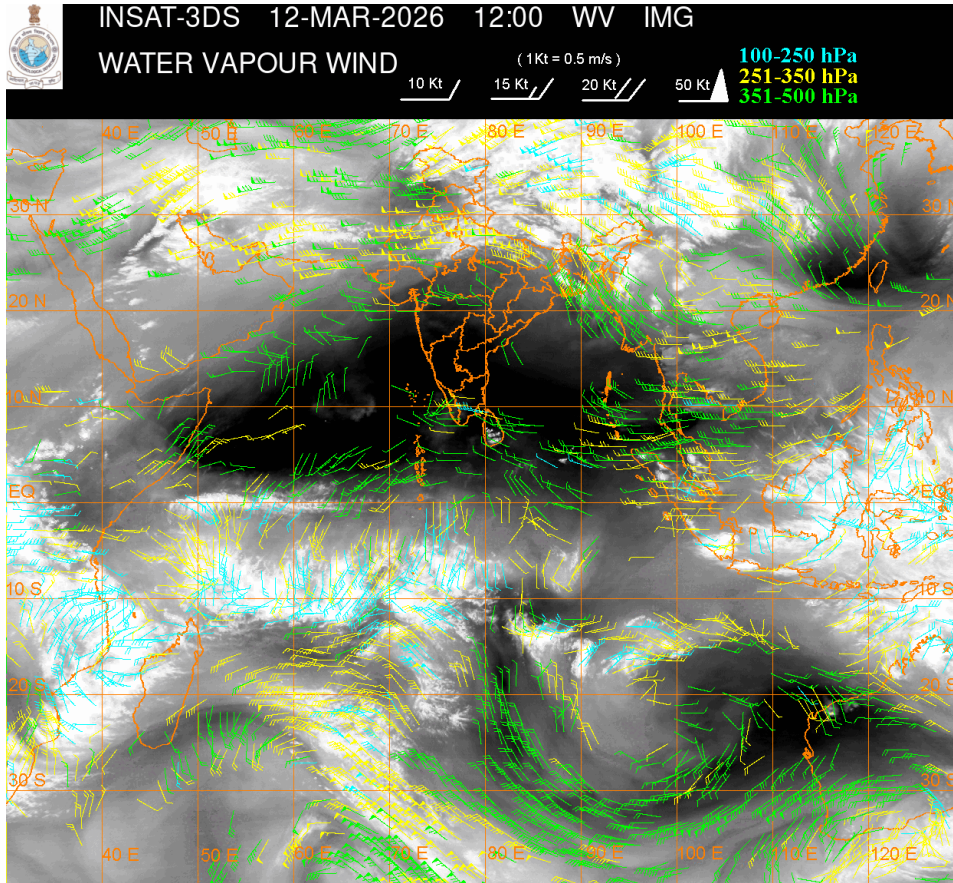
REGION COVERED BETWEEN LAT 50.0°N TO 35.0°S AND LONG 40.0°E TO 125.0°E (.)

SALIENT FEATURES:

WESTERN DISTURBANCE (WD):-

SCT TO BKN MULTILAYERED CLOUDS OVER PAK LADAKH J&K HP UTRKND PJB HARY DLH RAJ UP
TIBET ADJ CHINA IN ASSW WD OVER THE AREA (.)

SCT TO BKN MULTILAYERED CLOUDS OVER IRAN AND N/HOOD IN ASSW ANOTHER WD OVER THE
AREA (.)



CLOUD DESCRIPTION WITHIN INDIA:

NORTH:

SCT TO BKN LOW/MED CLOUDS WITH EMBDD MOD TO INT CONVTN OVER LADAKH J&K HP UTRKND S HARY UP (.) SCT LOW/MED CLOUDS WITH EMBDD ISOL WK TO MOD CONVTN OVER S PJB N HARY (.) SCT LOW/MED CLOUDS OVER N PJB (.)

EAST:

SCT TO BKN LOW/MED CLOUDS WITH EMBDD MOD TO INT CONVTN OVER E BHR N GWB SHWB SKM NORTH-EAST STATES & BD (.) SCT LOW/MED CLOUDS WITH EMBDD ISOL WK TO MOD CONVTN OVER BHR NE JHRKND SHWB (.) SCT LOW/MED CLOUDS OVER REST JHRKND GWB (.)

WEST:

SCT LOW/MED CLOUDS WITH EMBDD MOD TO INT CONVTN OVER RAJ EXT NW MP (.)

SOUTH:

SCT LOW/MED CLOUDS OVER SIK KER TN ANDAMAN & NICOBAR ILS (.)

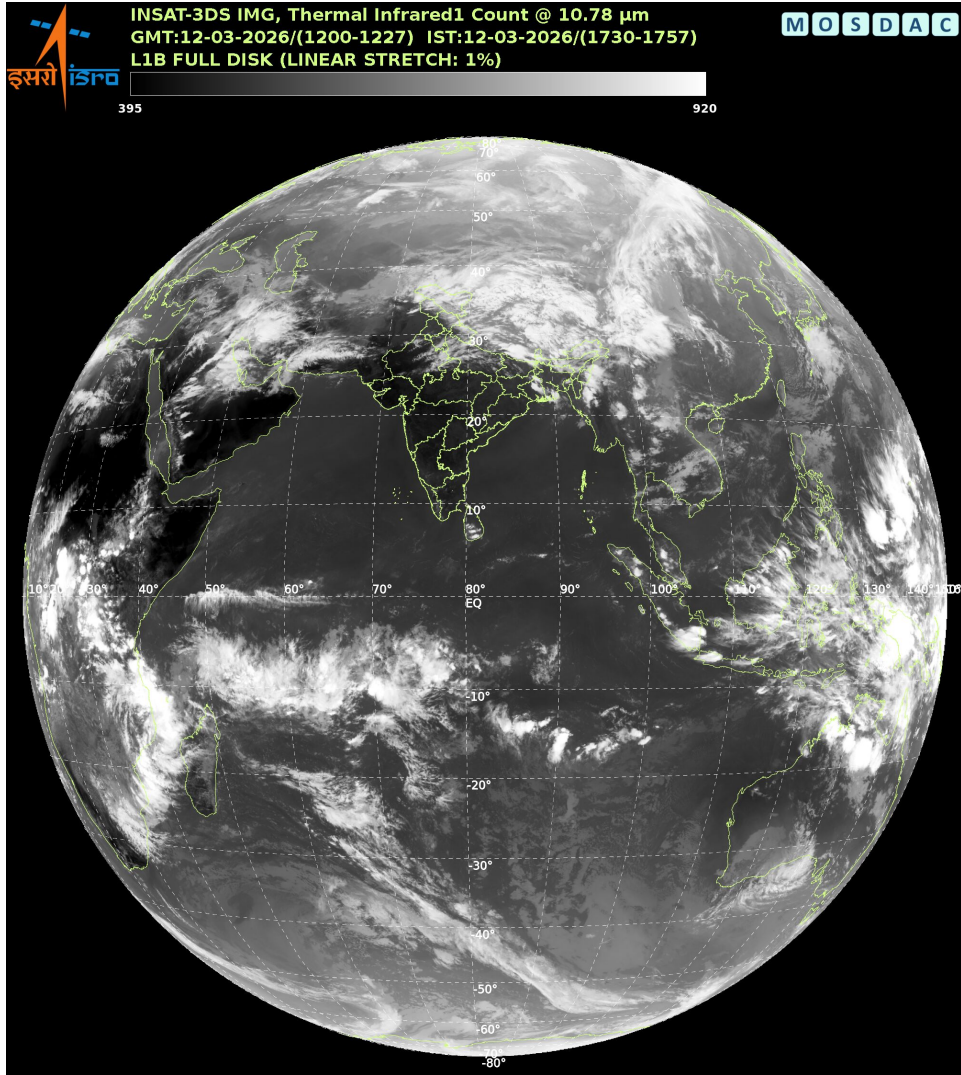
ARABIAN SEA:

SCT LOW/MED CLOUDS OVER SOUTH ARSEA (.)

BAY OF BENGAL & ANDAMAN SEA:

SCT LOW/MED CLOUDS WITH EMBDD ISOL WK TO MOD CONVTN OVER NORTH BAY (.)

CLOUD DESCRIPTION OUTSIDE INDIA:



SCT LOW/MED CLOUDS WITH EMBDD MOD TO INT CONVTN OVER NORTH PAK NEPAL BHUTAN TIBET CHINA NORTH MYANMAR GULF OF THAILAND CAMBODIA LAOS VIETNAM SUMATRA STR OF MALACCA MALAYSIA BORNEO SOUTH CHINA SEA JAVA ILS & SEA CELEBES ILS & SEA PHILIPPINES SULU SEA MADAGASCAR MOZAMBIQUE CHANNEL AND OVER INDIAN OCEAN BET EQ TO LAT 35.0S LONG 40.0E TO 105.0E (.)

T00 11/1810 HRS IST

NNNN

LEGEND

REGION	
NORTH	J&K HP UTRKND PJB HARY DLH UP
EAST	BHR JHRKND CHTGH ORS WB SKM NORTH-EAST STATES
WEST	RAJ MP GUJ MAHA GOA
SOUTH	TLNGN AP KRNTK KER TN LKSDP ANDAMAN & NICOBAR ILS
CLOUD DISTRIBUTION	
ISOL	ISOLATED (LESS THAN 25%)
SCT	SCATTERED (25 TO 50%)

BKN	BROKEN (51 TO 75%)
SLD	SOLID (GREATER THAN 75%)
CLOUDS TOP TEMPERATURE	
CTT	CLOUD TOP TEMPERATURE
CONVECTION	
WK CONVTN	WEAK CONVECTION (CTT GREATER THAN -25°C)
MOD CONVTN	MODERATE CONVECTION (CTT BETWEEN -25°C TO -40°C)
INT CONVTN	INTENSE CONVECTION (CTT BETWEEN -41°C TO -70°C)
V INT CONVTN	VERY INTENSE CONVECTION (CTT LESS THAN -70°C)
METEOROLOGICAL SUB-DIVISIONS, STATES & UNION TERRITORIES	
J&K	JAMMU AND KASHMIR
HP	HIMACHAL PRADESH
UTRKND	UTTARAKHAND
PJB	PUNJAB
HARY	HARYANA
DLH	DELHI
BHR	BIHAR
JHRKND	JHARKHAND
CHTGH	CHHATTISGARH
ORS	ORISSA
GWB	GANGETIC WEST BENGAL
SHWB	SUB-HIMALAYAN WEST BENGAL
SKM	SIKKIM
ARUPR	ARUNACHAL PRADESH
ASSAM	ASSAM
MEGHA	MEGHALAYA
MANI	MANIPUR
MIZO	MIZORAM
TRP	TRIPURA
RAJ	RAJASTHAN
MP	MADHYA PRADESH
GUJ	GUJARAT
SAU & KUTCH	SAURASHTRA & KUTCH
MAHA	MAHARASHTRA

M MAHA	MADHYA MAHARASHTRA
MRTHWD	MARATHWADA
VID	VIDARBHA
KKN	KONKAN
TLNGN	TELANGANA
RYLSM	RAYALSEEMA
COTL AP	COASTAL ANDHRA PRADESH
NIK	NORTH INTERIOR KARNATAKA
SIK	SOUTH INTERIOR KARNATAKA
COTL KRNTK	COASTAL KARNATAKA
KER	KERALA
TN	TAMILNADU
LKSDP	LAKSHADWEEP
ILS	ISLANDS
ARSEA	ARABIAN SEA
MISCELLANEOUS	
ASSW	IN ASSOCIATION WITH
ASSTD	ASSOCIATED
LLC	LOW LEVEL CIRCULATION
EMBDD	EMBEDDED
N/HOOD	NEIGHBOURHOOD
EXT	EXTREME