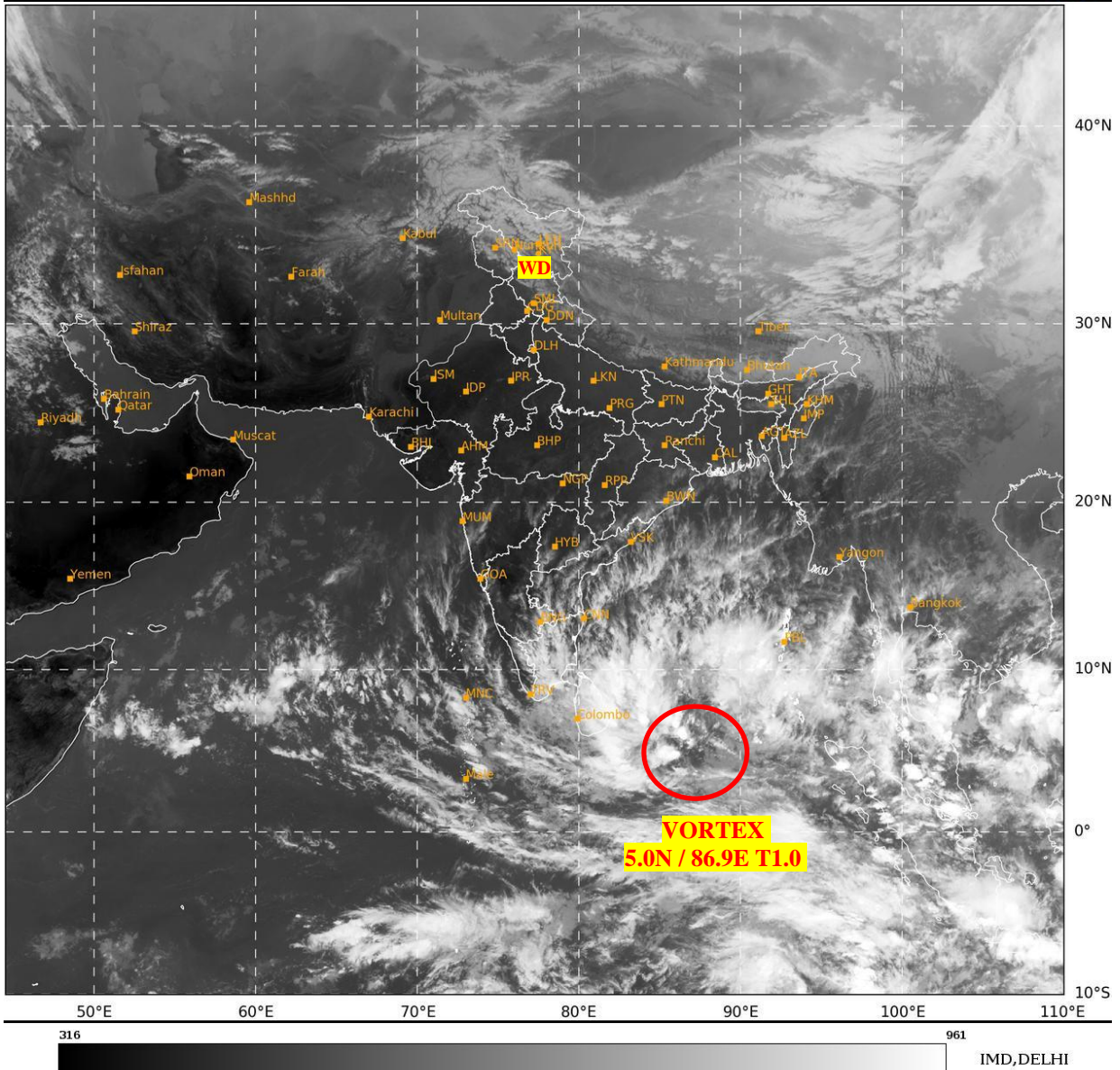




**SATELLITE BULLETIN BASED ON SATELLITE  
IMAGERIES AND PRODUCTS**  
**24.11.2024 TIME 0900 UTC**

SAT : INSAT-3DR IMG  
IMG\_TIR1 10.8 um  
LIC Mercator

24-11-2024/(0915 to 0942) GMT  
24-11-2024/(1445 to 1512) IST



TCIN50 DEMS 240900

SATELLITE BULLETIN BASED ON INSAT-3DR PIC OF 240915 UTC (.)

REGION COVERED BETWEEN LAT 50.0°N TO 35.0°S AND LONG 40.0°E TO 125.0°E (.)

**SALIENT FEATURES:-**

**VORTEX OVER SOUTH EAST BAY ADJOINING EQUATORIAL INDIAN OCEAN:-**

VORTEX OVER SOUTH EAST BAY ADJOINING EQUATORIAL INDIAN OCEAN CENTERED WITHIN **HALF A DEGREE OF 5.0N / 86.9E** (.) INTENSITY **T1.0** (.) ASSTD SCT TO BKN LOW/MED CLOUDS WITH EMBDD INT TO V INT CONVTN OVER SOUTH BAY ADJ EQUATORIAL INDIAN OCEAN BET LAT 4.0N TO 12.0N AND LONG 82.0E TO 92.0E (.) MINIMUM CTT **MINUS 80-93 DEG CEL** (.)

**WESTERN DISTURBANCE:-**

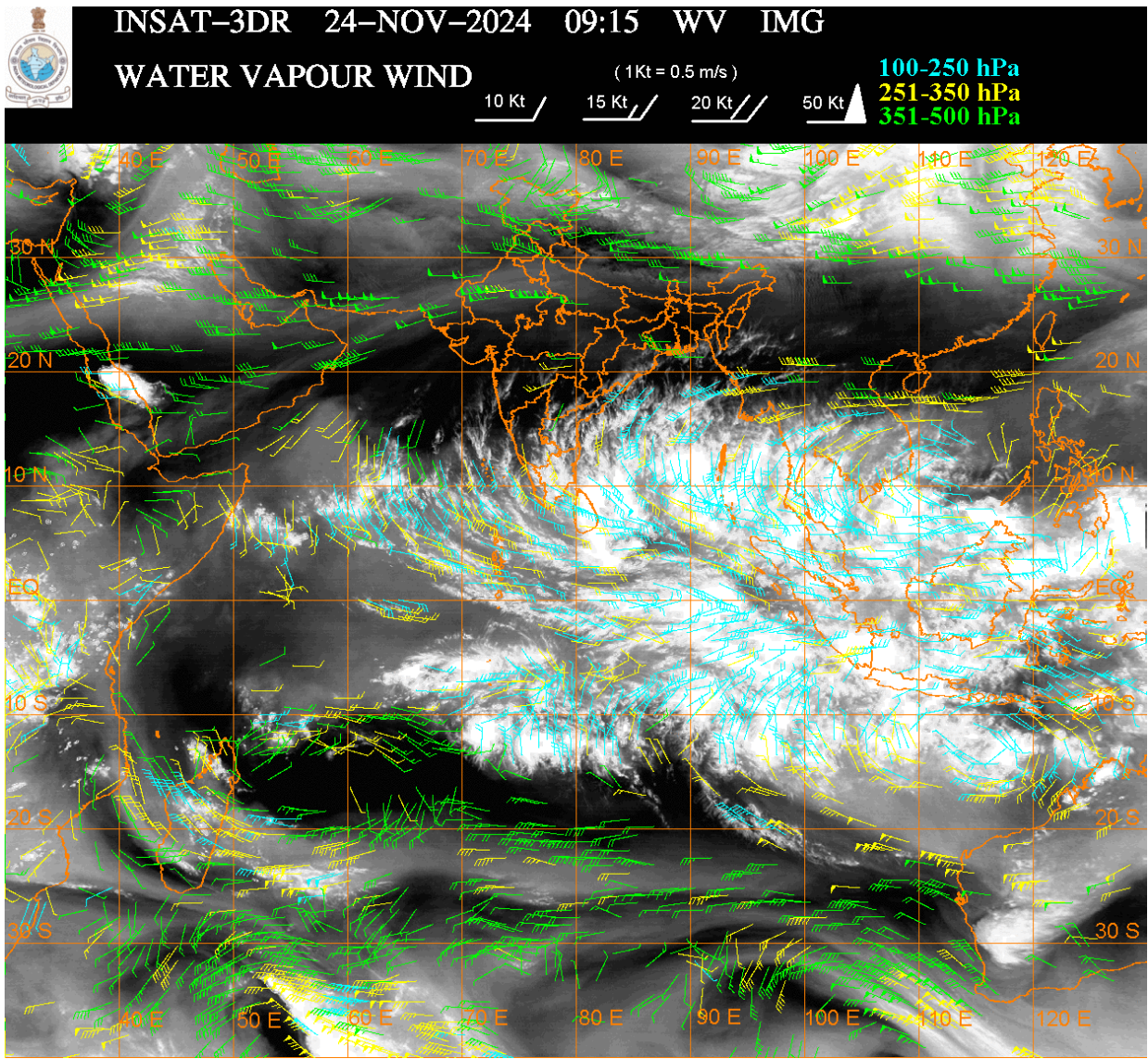
SCT MULTILAYERED CLOUDS OVER EXT N PAK J&K LADAKH TIBET ADJ CHINA IN ASSW **WD** OVER THE AREA (.)

**CONVECTIVE / THUNDERSTORM ACTIVITY:-**

INTENSE TO VERY INTENSE CONVECTIVE / THUNDERSTORM ACTIVITY OBSERVED OVER ANDAMAN & NICOBAR ILS AREA (MINIMUM CTT **MINUS 80-93 DEG CEL**) (.)



**MODERATE TO INTENSE CONVECTIVE / THUNDERSTORM ACTIVITY OBSERVED OVER TN LKSDP ILS AREA (MINIMUM CTT **MINUS 45-55 DEG CEL**) (.)**



**CLOUDS DESCRIPTION WITHIN INDIA:-**

**NORTH:-**

**SCT LOW/MED CLOUDS WITH EMBDD ISOL WK TO MOD CONVTN OVER LADAKH J&K N HP N UTRKND (.) ISOL LOW/MED CLOUDS OVER S HP S UTRKND (.)**

**EAST:-**

**SCT LOW/MED CLOUDS WITH EMBDD ISOL WK CONVTN OVER ORS COTL GWB N SHWB SKM ARUPR ASSAM (.) ISOL TO SCT LOW/MED CLOUDS OVER JHRKND S CHTGH REST NE STATES (.)**

**WEST:-**

**SCT LOW/MED CLOUDS WITH EMBDD ISOL WK CONVTN OVER MRTHWD (.) ISOL TO SCT LOW/MED CLOUDS OVER E RAJ REST MAHA & GOA (.)**

**SOUTH:-**

**SCT LOW/MED CLOUDS WITH EMBDD INT TO V INT CONVTN OVER ANDAMAN & NICOBAR ILS AREA (.) SCT LOW/MED CLOUDS WITH EMBDD MOD TO INT CONVTN OVER TN KER LKSDP ILS AREA AND ISOL WK TO MOD CONVTN OVER SIK RYLSM COTL AP (.) SCT LOW/MED CLOUDS OVER REST KRNTK TLNGN (.)**

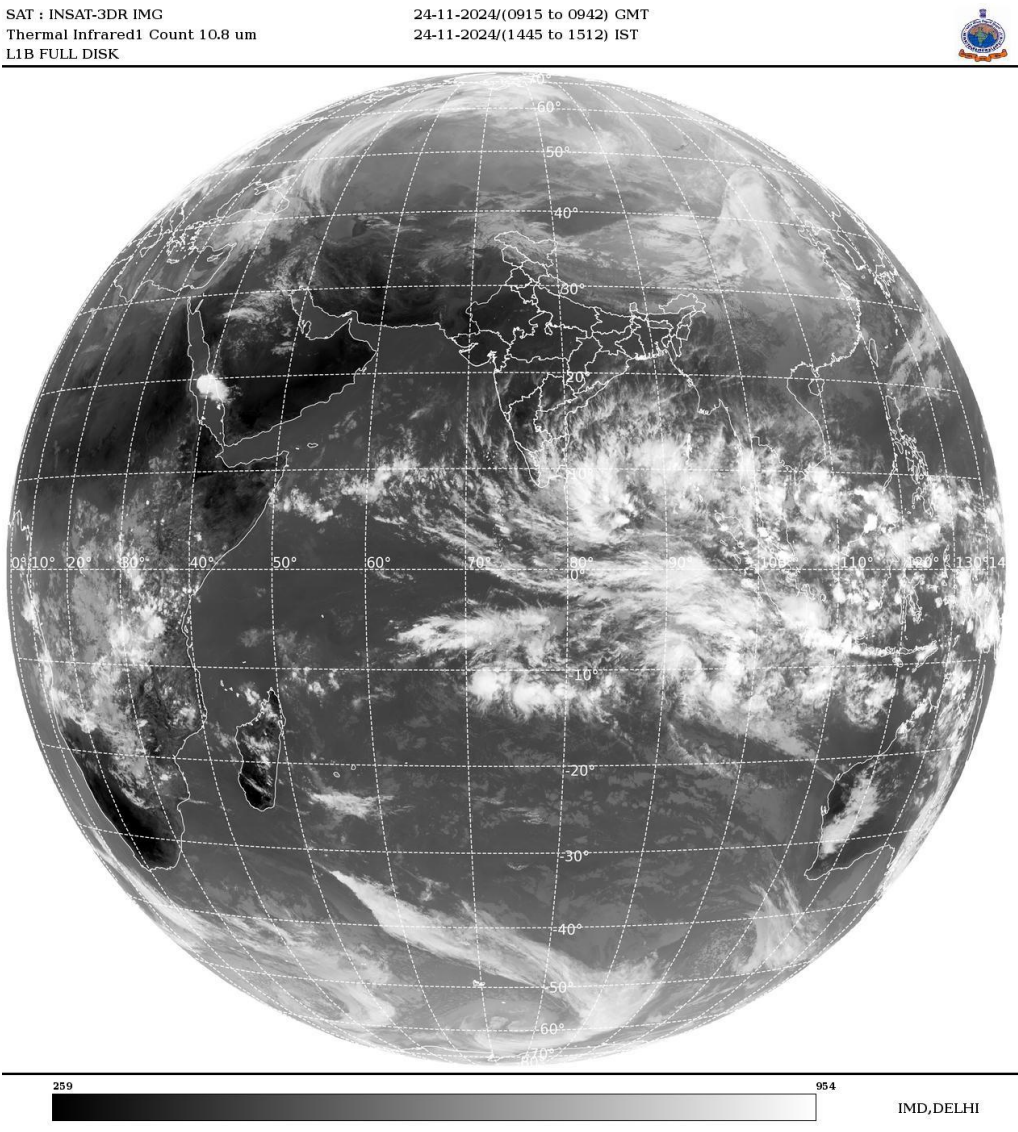
**ARABIAN SEA:-**

**SCT LOW/MED CLOUDS WITH EMBDD MOD TO INT CONVTN OVER SOUTH ARSEA LKSDP ILS AREA MALDIVES & COMORIN AREA AND ISOL WK TO MOD CONVTN OVER CENTRAL ARSEA (.)**

**BAY OF BENGAL & ANDAMAN SEA:-**

SCT TO BKN LOW/MED CLOUDS WITH EMBDD INT TO V INT CONVTN OVER SOUTH BAY & ANDAMAN SEA (MINIMUM **CTT MINUS 80-93 DEG CEL**) (.) SCT LOW/MED CLOUDS WITH EMBDD MOD TO INT CONVTN OVER CENTRAL BAY AND ISOL WK TO MOD CONVTN OVER NORTH BAY (.)

**CLOUDS DESCRIPTION OUTSIDE INDIA:-**



SCT LOW/MED CLOUDS WITH EMBDD MOD TO INT CONVTN OVER SRI LANKA PALK STR GULF OF MANNAR MALDIVES TIBET CHINA YELLOW SEA EAST CHINA SEA MYANMAR THAILAND GULF OF THAILAND CAMBODIA VIETNAM SUMATRA STR OF MALACCA MALAYSIA BORNEO SOUTH CHINA SEA JAVA ILS & SEA CELEBES ILS & SEA S PHILIPPINES MADAGASCAR MOZAMBIQUE CHANNEL AND OVER INDIAN OCEAN BET LAT 5.0N TO 20.0S LONG 50.0E TO 120.0E (.)

TOO 24/1610 HRS IST=

NNNN

**LEGEND:-**

|               |              |                                                              |
|---------------|--------------|--------------------------------------------------------------|
| <b>REGION</b> | <b>NORTH</b> | <b>J&amp;K HP PJB HARY DLH UP UTRKND</b>                     |
|               | <b>EAST</b>  | <b>BHR JHRKND CHTGH ORS WB SKM NORTH- EAST STATES</b>        |
|               | <b>WEST</b>  | <b>RAJ MP GUJ MAHA GOA</b>                                   |
|               | <b>SOUTH</b> | <b>TLNGN AP KRNTK KER TN LKSDP ANDAMAN &amp; NICOBAR ILS</b> |

|                                                                      |                     |                                                         |                   |
|----------------------------------------------------------------------|---------------------|---------------------------------------------------------|-------------------|
| <b>CLOUD DISTRIBUTION</b>                                            | <b>ISOL</b>         | <b>ISOLATED (LESS THAN 25%)</b>                         |                   |
|                                                                      | <b>SCT</b>          | <b>SCATTERED (25 TO 50%)</b>                            |                   |
|                                                                      | <b>BKN</b>          | <b>BROKEN (51 TO 75%)</b>                               |                   |
|                                                                      | <b>SLD</b>          | <b>SOLID (GREATER THAN 75%)</b>                         |                   |
| <b>CLOUDS TOP TEMPERATURE</b>                                        | <b>CTT</b>          | <b>CLOUD TOP TEMPERATURE</b>                            |                   |
| <b>CONVECTION</b>                                                    | <b>WK CONVTN</b>    | <b>WEAK CONVECTION (CTT GREATER THAN -25°C)</b>         |                   |
|                                                                      | <b>MOD CONVTN</b>   | <b>MODERATE CONVECTION (CTT BETWEEN -25°C TO -40°C)</b> |                   |
|                                                                      | <b>INT CONVTN</b>   | <b>INTENSE CONVECTION (CTT BETWEEN -41°C TO -70°C)</b>  |                   |
|                                                                      | <b>V INT CONVTN</b> | <b>VERY INTENSE CONVECTION (CTT LESS THAN -70°C)</b>    |                   |
| <b>METEOROLOGICAL SUB- DIVISIONS, STATES &amp; UNION TERRITORIES</b> | <b>ARUPR</b>        | <b>ARUNACHAL PRADESH</b>                                |                   |
|                                                                      | <b>BHR</b>          | <b>BIHAR</b>                                            |                   |
|                                                                      | <b>CHTGH</b>        | <b>CHHATTISGARH</b>                                     |                   |
|                                                                      | <b>COTL AP</b>      | <b>COASTAL ANDHRA PRADESH</b>                           |                   |
|                                                                      | <b>COTL KRNTK</b>   | <b>COASTAL KARNATAKA</b>                                |                   |
|                                                                      | <b>COTL ORS</b>     | <b>COASTAL ORISSA</b>                                   |                   |
|                                                                      | <b>GUJ</b>          | <b>GUJARAT</b>                                          |                   |
|                                                                      | <b>GWB</b>          | <b>GANGETIC WEST BENGAL</b>                             |                   |
|                                                                      | <b>HARY</b>         | <b>HARYANA</b>                                          |                   |
|                                                                      | <b>DLH</b>          | <b>DELHI</b>                                            |                   |
|                                                                      | <b>HP</b>           | <b>HIMACHAL PRADESH</b>                                 |                   |
|                                                                      | <b>J&amp;K</b>      | <b>JAMMU AND KASHMIR</b>                                |                   |
|                                                                      | <b>JHRKND</b>       | <b>JHARKHAND</b>                                        |                   |
|                                                                      | <b>KER</b>          | <b>KERALA</b>                                           |                   |
|                                                                      | <b>KKN</b>          | <b>KONKAN</b>                                           |                   |
|                                                                      | <b>LKSDP</b>        | <b>LAKSHADWEEP</b>                                      |                   |
|                                                                      | <b>M MAHA</b>       | <b>MADHYA MAHARASHTRA</b>                               |                   |
|                                                                      | <b>MAHA</b>         | <b>MAHARASHTRA</b>                                      |                   |
|                                                                      | <b>MANI</b>         | <b>MANIPUR</b>                                          |                   |
|                                                                      | <b>MEGHA</b>        | <b>MEGHALAYA</b>                                        |                   |
|                                                                      | <b>MIZO</b>         | <b>MIZORAM</b>                                          |                   |
|                                                                      | <b>MP</b>           | <b>MADHYA PRADESH</b>                                   |                   |
|                                                                      |                     | <b>MRTHWD</b>                                           | <b>MARATHWADA</b> |
|                                                                      |                     | <b>NAGA</b>                                             | <b>NAGALAND</b>   |
| <b>N COTL AP</b>                                                     |                     | <b>NORTH COASTAL ANDHRA PRADESH</b>                     |                   |
| <b>NIK</b>                                                           |                     | <b>NORTH INTERIOR KARNATAKA</b>                         |                   |
| <b>ORS</b>                                                           |                     | <b>ORISSA</b>                                           |                   |
| <b>PJB</b>                                                           |                     | <b>PUNJAB</b>                                           |                   |
| <b>RAJ</b>                                                           |                     | <b>RAJASTHAN</b>                                        |                   |
| <b>RYLSM</b>                                                         |                     | <b>RAYALASEEMA</b>                                      |                   |
| <b>SAU &amp; KUTCH</b>                                               |                     | <b>SAURASHTRA &amp; KUTCH</b>                           |                   |
| <b>SHWB</b>                                                          |                     | <b>SUB-HIMALAYAN WEST BENGAL</b>                        |                   |
| <b>SIK</b>                                                           |                     | <b>SOUTH INTERIOR KARNATAKA</b>                         |                   |
| <b>SKM</b>                                                           |                     | <b>SIKKIM</b>                                           |                   |

|                      |               |                                  |
|----------------------|---------------|----------------------------------|
|                      | <b>TLNGN</b>  | <b>TELANGANA</b>                 |
|                      | <b>TN</b>     | <b>TAMIL NADU</b>                |
|                      | <b>TRP</b>    | <b>TRIPURA</b>                   |
|                      | <b>UP</b>     | <b>UTTAR PRADESH</b>             |
|                      | <b>UTRKND</b> | <b>UTTARAKHAND</b>               |
|                      | <b>VID</b>    | <b>VIDHARBHA</b>                 |
|                      | <b>SHWB</b>   | <b>SUB HIMALAYAN WEST BENGAL</b> |
|                      | <b>GWB</b>    | <b>GANGETIC WEST BENGAL</b>      |
|                      | <b>ARSEA</b>  | <b>ARABIAN SEA</b>               |
|                      | <b>ILS</b>    | <b>ISLANDS</b>                   |
| <b>MISCELLANEOUS</b> | <b>ASSW</b>   | <b>IN ASSOCIATION WITH</b>       |
|                      | <b>ASSTD</b>  | <b>ASSOCIATED</b>                |
|                      | <b>LLC</b>    | <b>LOW LEVEL CIRCULATION</b>     |
|                      | <b>EMBDD</b>  | <b>EMBEDDED</b>                  |
|                      | <b>N/HOOD</b> | <b>NEIGHBOURHOOD</b>             |
|                      | <b>EXT</b>    | <b>EXTREME</b>                   |