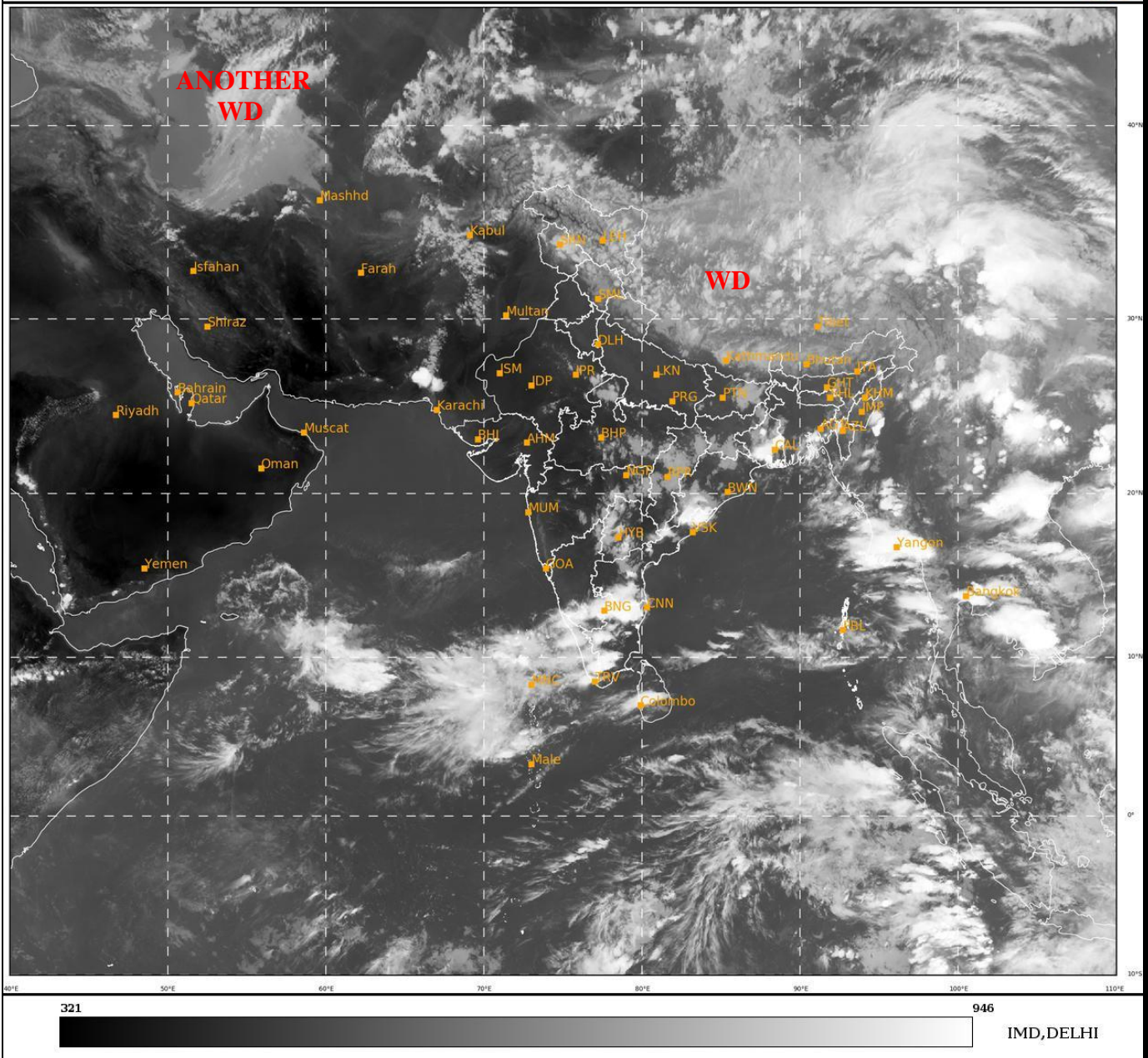




**SATELLITE BULLETIN BASED ON SATELLITE
 IMAGERIES AND PRODUCTS**
26.05.2022 TIME 1200 UTC

SAT : INSAT-3DR IMG
 IMG_TIR1 10.8 um
 LIC Mercator

26-05-2022/(1215 to 1242) GMT
 26-05-2022/(1745 to 1812) IST



TCIN50 DEMS 261200

SATELLITE BULLETIN BASED ON INSAT-3D PIC OF 261200 UTC (.)

REGION COVERED BETWEEN LAT 50.0°N TO 30.0°S AND LONG 40.0°E TO 125.0°E (.)

SALIENT FEATURES:-

WESTERN DISTURBANCE (WD):-

SCT MULTILAYERED CLOUDS OVER TIBET ADJ CHINA IN ASSW **WD** OVER THE AREA (.)

SCT MULTILAYERED CLOUDS OVER CASPIAN SEA & N/HOOD IN ASSW **ANOTHER WD** OVER THE AREA (.)

THUNDERSTORM / CONVECTIVE ACTIVITY:-

THUNDERSTORM / CONVECTIVE ACTIVITIES OBSERVED OVER SW TLNGN SIK AP KER TN LKSDP ILS AREA (.)

DUST :-

METEOSAT-8 RGB DUST PRODUCT AT 1230 UTC INDICATES DUST OVER ISOLATED PLACES OF GUJ (.)

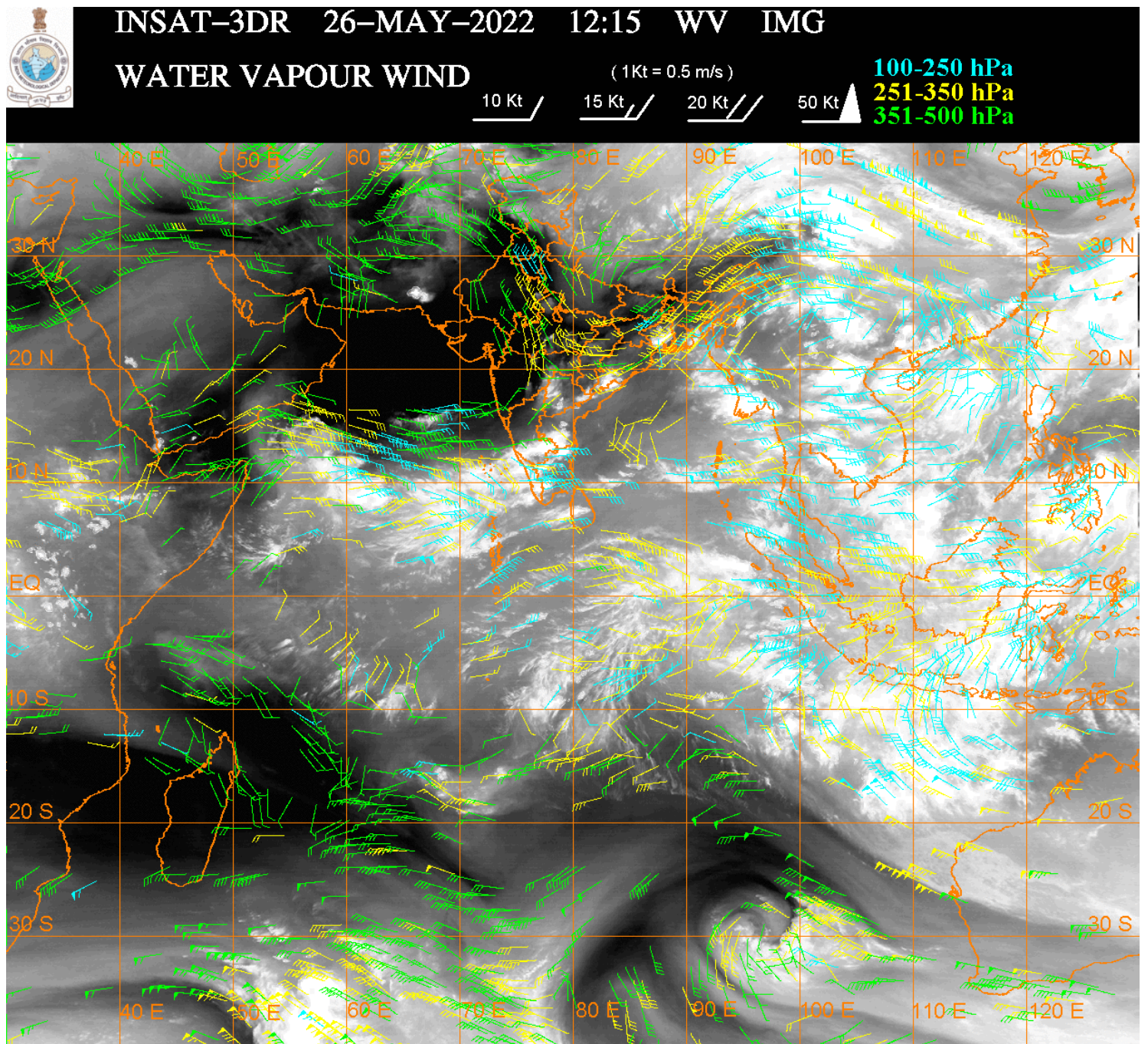
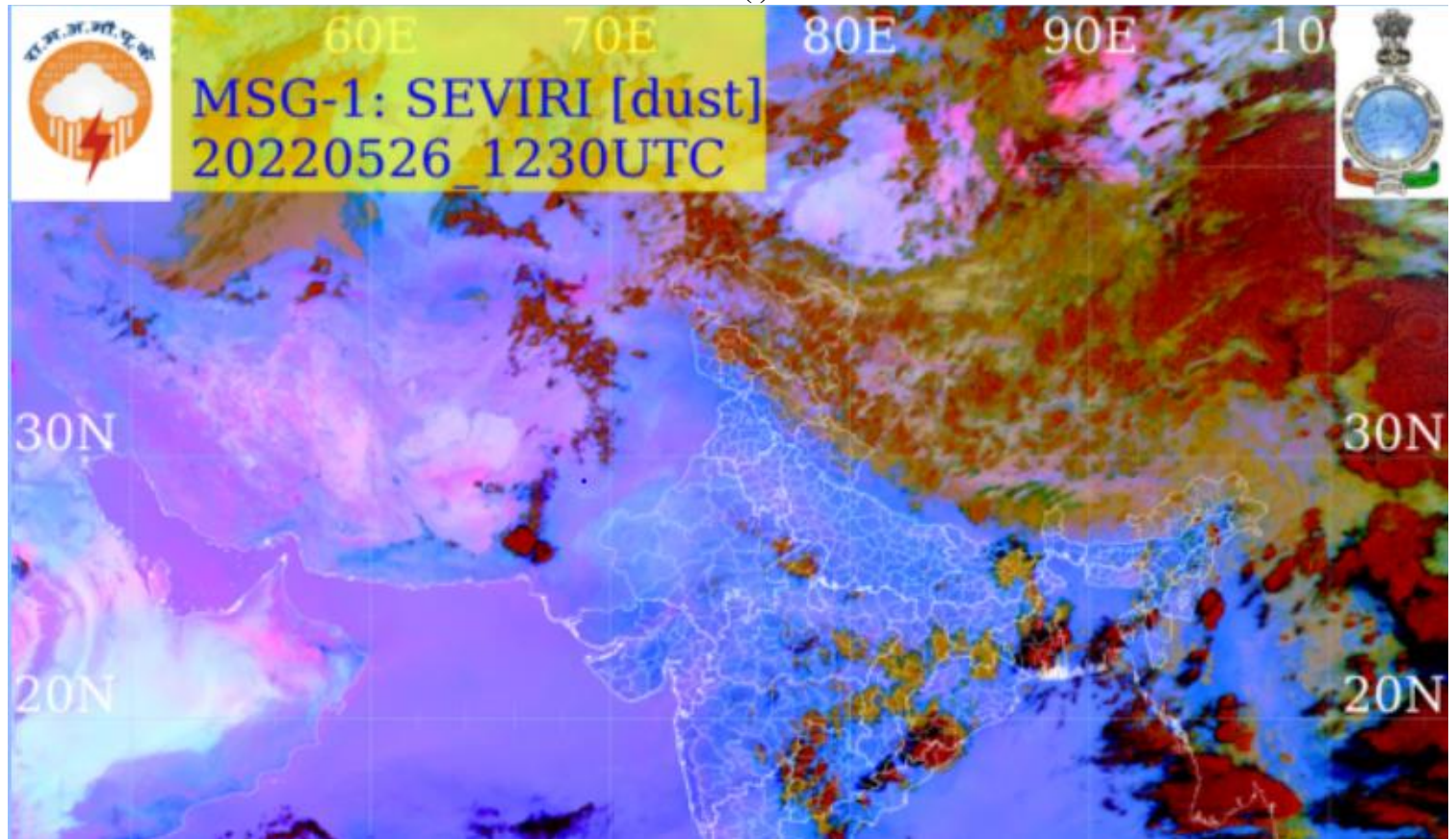
PRECIPITATION NOWCASTING:-

(BASED ON SCOPE NOWCASTING TOOL AT 1100 UTC AT A LEAD TIME OF 03 HRS (MM/HR):-

RAINFALL UP TO 7.0-15 MM LIKELY OVER SW GWB SIK N KER W& NE TN EXT S AP (.)

RAINFALL UP TO 0.5-5 MM LIKELY OVER J&K HP S KER SW TLNGN N COTL AP S NAGA S

MIZO EXT S ARUPR LKSDP ILS & ANDAMAN ILS (.)



CLOUDS DESCRIPTION WITHIN INDIA:-

NORTH:-

SCT LOW/MED CLOUDS WITH EMBDD WK TO MOD CONVTN OVER N J&K LADAKH HP UTRKND EXT E UP (.) SCT LOW/MED CLOUDS S J&K N PJB REST E UP(.)

EAST:-

SCT LOW/MED CLOUDS WITH EMBDD INT TO V INT CONVTN OVER S GWB S ORS (.) SCT LOW/MED CLOUDS WITH EMBDD ISOL MOD TO INT CONVTN OVER NW MIZO ADJ N TRP EXT E MANI AND WK TO MOD CONVTN OVER N CHTGH NW ORS E BHR JHRKND N GWB SKM ARUPR E ASSAM N NAGA S MIZO S TRP (.) SCT LOW/MED CLOUDS OVER S CHTGH E ORS W BHR SHWB WASSAM MEGHA S NAGA REST MANI (.)

WEST:-

SCT LOW/MED CLOUDS WITH EMBDD WK TO MOD CONVTN OVER NW&EC MP EXT NE RAJ VID E MRTHWD(.) SCT LOW/MED CLOUDS OVER REST E RAJ SW MP REST MAHA GOA (.)

SOUTH:-

SCT LOW/MED CLOUDS WITH EMBDD INT TO V INT CONVTN OVER KER TN COTL AP SIK AND MOD TO INT CONVTN OVER SW TLNGN LKSDP ILS (.) SCT LOW/MED CLOUDS WITH EMBDD WK TO MOD CONVTN OVER N TLNGN NE NIK ANDAMAN ILS (.) SCT LOW/MED CLOUDS OVER RYLSMA REST NIK & NICOBAR ILS (.)

ARABIAN SEA:-

SCT LOW/MED CLOUDS WITH EMBDD INT TO V INT CONVTN OVER SOUTH ARSEA AND MOD TO INT CONVTN OVER WC ARSEA (.)

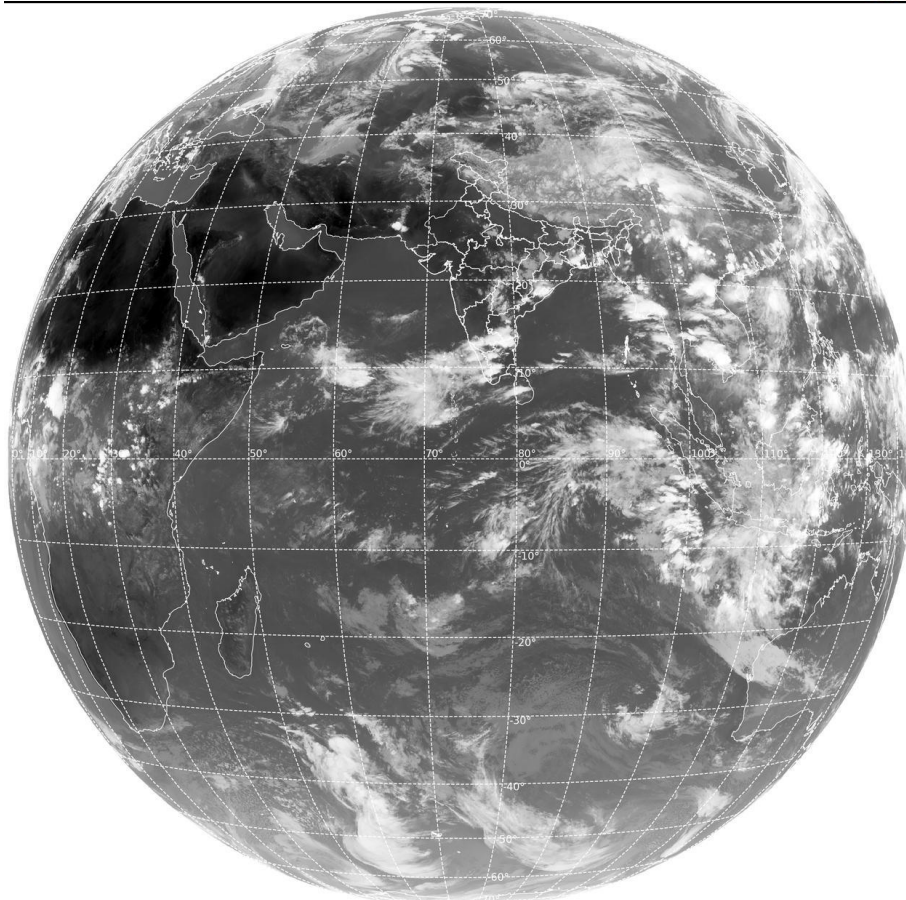
BAY OF BENGAL & ANDAMAN SEA:-

SCT LOW/MED CLOUDS WITH EMBDD INT TO V INT CONVTN OVER ARAKAN COAST GULF OF MARTABAN TENASSERIM COAST (.) SCT LOW/MED CLOUDS WITH EMBDD MOD TO INT CONVTN OVER NE&SW BAY N ANDAMAN SEA (.) SCT LOW/MED CLOUDS WITH EMBDD WK TO MOD CONVTN OVER EC BAY (.)

CLOUDS DESCRIPTION OUTSIDE INDIA:-

SAT : INSAT-3DR IMG
Thermal Infrared1 Count 10.8 um
LIB FULL DISK

26-05-2022/(1215 to 1242) GMT
26-05-2022/(1745 to 1812) IST



SCT LOW/MED CLOUDS WITH EMBDD MOD TO INT CONVTN OVER S SRILANKA N MALDIVES TIBET CHINA MYANMAR THAILAND CAMBODIA LAOS VIETNAM HAINAN TAIWAN SUMATRA STR OF MALACCA MALAYSIA BORNEO SOUTH CHINA SEA JAVA ILS & SEA CELEBES ILS & SEA PHILIPPINES SULU SEA E CHINA SEA AND OVER INDIAN OCEAN BET LAT 5.0N TO 5.0S EAST OF LONG 70.0E AND BET LAT 5.0S TO 20.0S LONG 58.0E TO 120.0E (.)

TOO 26/1840 HRS IST=

NNNN

LEGEND:-

REGION	NORTH	J&K HP PJB HARY DLH UP UTRKND
	EAST	BHR JHRKND CHTGH OR WB SKM NORTH- EAST STATES
	WEST	RAJ MP GUJ MAHA GOA
	SOUTH	TLNGN AP KRNTK KER TN LKSDP ANDAMAN & NICOBAR ILS

CLOUD DISTRIBUTION	ISOL	ISOLATED (LESS THAN 25%)
	SCT	SCATTERED (25 TO 50%)
	BKN	BROKEN (51 TO 75%)
	SLD	SOLID (GREATER THAN 75%)
CLOUDS TOP TEMPERATURE	CTT	CLOUD TOP TEMPERATURE
CONVECTION	WK CONVTN	WEAK CONVECTION (CTT GREATER THAN -25°C)
	MOD CONVTN	MODERATE CONVECTION (CTT BETWEEN -25°C TO -40°C)
	INT CONVTN	INTENSE CONVECTION (CTT BETWEEN -41°C TO -70°C)
	V INT CONVTN	VERY INTENSE CONVECTION (CTT LESS THAN -70°C)
METEOROLOGICAL SUB-DIVISIONS, STATES & UNION TERRITORIES	ARUPR	ARUNACHAL PRADESH
	BHR	BIHAR
	CHTGH	CHHATTISGARH
	COTL AP	COASTAL ANDHRA PRADESH
	COTL KRNTK	COASTAL KARNATAKA
	COTL ORS	COASTAL ORISSA
	GUJ	GUJARAT
	GWB	GANGETIC WEST BENGAL
	HARY	HARYANA
	DLH	DELHI
	HP	HIMACHAL PRADESH
	J&K	JAMMU AND KASHMIR
	JHRKND	JHARKHAND
	KER	KERALA
KKN	KONKAN	

	LKSDP	LAKSHADWEEP
	M MAHA	MADHYA MAHARASHTRA
	MAHA	MAHARASHTRA
	MANI	MANIPUR
	MEGHA	MEGHALAYA
	MIZO	MIZORAM
	MP	MADHYA PRADESH
	MRTHWD	MARATHWADA
	NAGA	NAGALAND
	N COTL AP	NORTH COASTAL ANDHRA PRADESH
	NIK	NORTH INTERIOR KARNATAKA
	ORS	ORISSA
	PJB	PUNJAB
	RAJ	RAJASTHAN
	RYLSM	RAYALASEEMA
	SAU & KUTCH	SAURASHTRA & KUTCH
	SHWB	SUB-HIMALAYAN WEST BENGAL
	SIK	SOUTH INTERIOR KARNATAKA
	SKM	SIKKIM
	TLNGN	TELANGANA
	TN	TAMIL NADU
	TRP	TRIPURA
	UP	UTTAR PRADESH
	UTRKND	UTTARAKHAND
	VID	VIDHARBHA
	SHWB	SUB HIMALAYAN WEST BENGAL
	GWB	GANGETIC WEST BENGAL
	ARSEA	ARABIAN SEA
	ILS	ISLANDS
MISCELLANEOUS	ASSW	IN ASSOCIATION WITH
	ASSTD	ASSOCIATED
	LLC	LOW LEVEL CIRCULATION
	EMBDD	EMBEDDED
	N/HOOD	NEIGHBOURHOOD
	EXT	EXTREME