

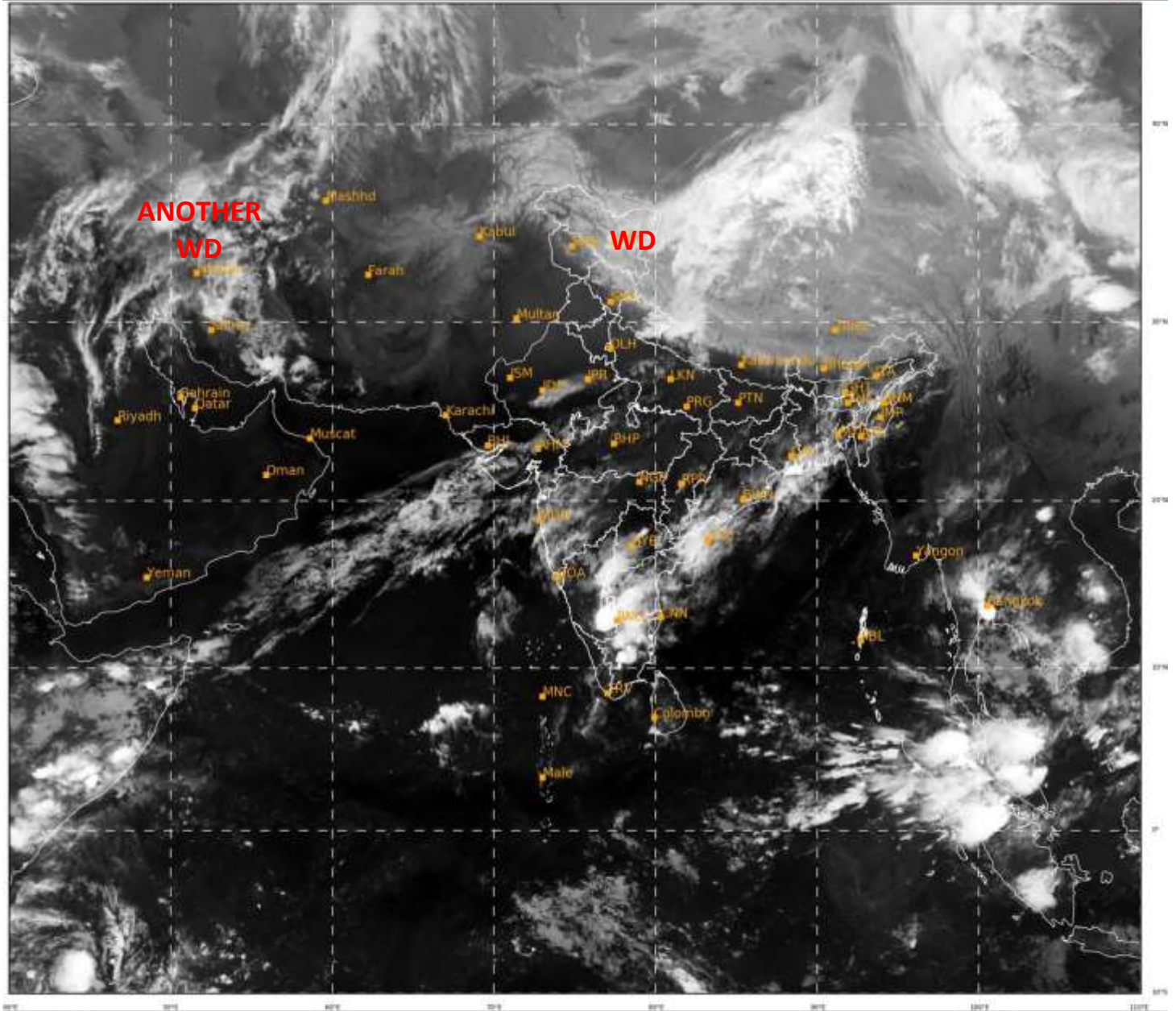


**SATELLITE BULLETIN BASED ON SATELLITE IMAGERIES
 AND PRODUCTS**

23.04.2021 TIME 1800 UTC

SAT : INSAT-3D IMG
 IMG_TIR1 10.8 um
 LIC Mercator

23-04-2021/(1700 to 1726) GMT
 23-04-2021/(2230 to 2256) IST



480

936

IMD, DELHI

TCIN50 DEMS 231800

SATELLITE BULLETIN BASED ON INSAT-3D PIC OF 231700 UTC (.)

REGION COVERED BETWEEN LAT 50.0°N TO 30.0°S AND LONG 40.0°E TO 125.0°E (.)

SALIENT FEATURES:-

WESTERN DISTURBANCE (WD):-

SCT TO BKN MULTILAYERED CLOUDS OVER LADAKH J&K HP UTRKND W NEPAL TIBET ADJ CHINA IN ASSW **WD** OVER THE AREA (.)

SCT MULTILAYERED CLOUDS OVER S CASPIAN SEA IRAN AND N/HOOD IN ASSW **ANOTHER WD** OVER THE AREA (.)



INSAT-3D 23-APR-2021 17:00 WV IMG

WATER VAPOUR WIND

(1Kt = 0.5 m/s)

10 Kt

15 Kt

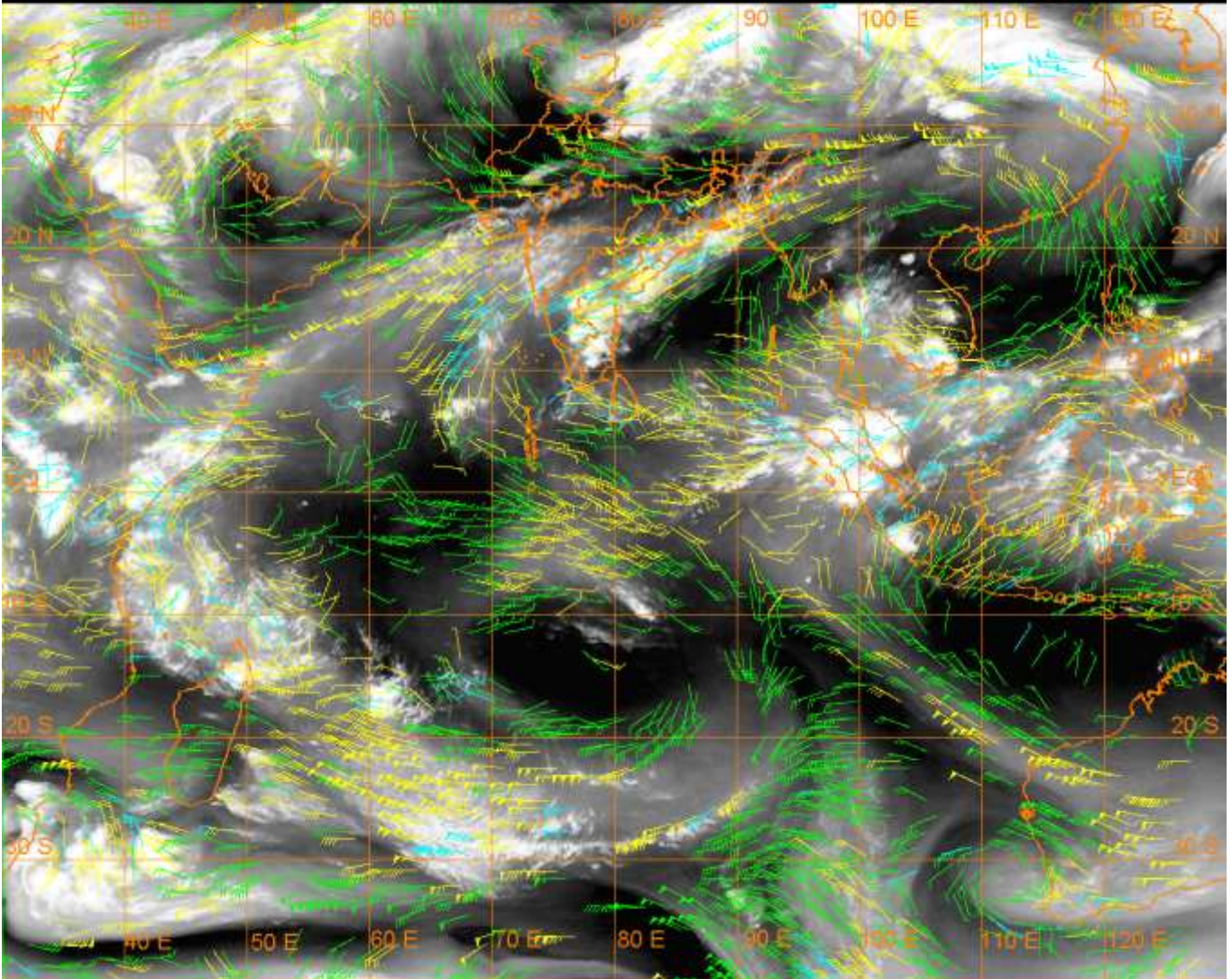
20 Kt

50 Kt

100-250 hPa

251-350 hPa

351-500 hPa



CLOUDS DESCRIPTION WITHIN INDIA:-

NORTH:-

SCT LOW/MED CLOUDS WITH EMBDD MOD TO INT CONVTN OVER E LADAKH N HP E UTRKND
(.) SCT LOW/MED CLOUDS WITH EMBDD WK TO MOD CONVTN OVER REST LADAKH J&K
REST HP REST UTRKND (.) SCT LOW/MED CLOUDS OVER W UP (.)

EAST:-

SCT LOW/MED CLOUDS WITH EMBDD MOD TO INT CONVTN OVER S CHTGH COTL ORS & BD
(.) SCT LOW/MED CLOUDS WIRH EMBDD ISOL WK TO MOD CONVTN OVER REST ORS SKM
ARUPR GWB ASSAM MEGHA MANI TRP NAGA MIZO (.) SCT LOW/MED CLOUDS OVER C
CHTGH JHRKND SHWB (.)

WEST:-

SCT LOW/MED CLOUDS WITH EMBDD MOD TO INT CONVTN OVER SW RAJ (.) SCT LOW/MED
CLOUDS WITH EMBDD WK TO MOD CONVTN OVER S GUJ MAHA GOA (.) SCT LOW/MED
CLOUDS OVER E RAJ REST GUJ MP (.)

SOUTH:-

SCT LOW/MED CLOUDS WITH EMBDD INT TO V INT CONVTN OVER RYLSM AP KRNTK N TN
(.) SCT LOW/MED CLOUDS WITH EMBDD MOD TO INT CONVTN OVER SW TLNGN (.) SCT
LOW/MED CLOUDS WITH EMBDD ISOL WK TO MOD CONVTN OVER REST TLNGN REST TN (.)
SCT LOW/MED CLOUDS OVER KER ANDAMAN & NICOBAR ILS (.)

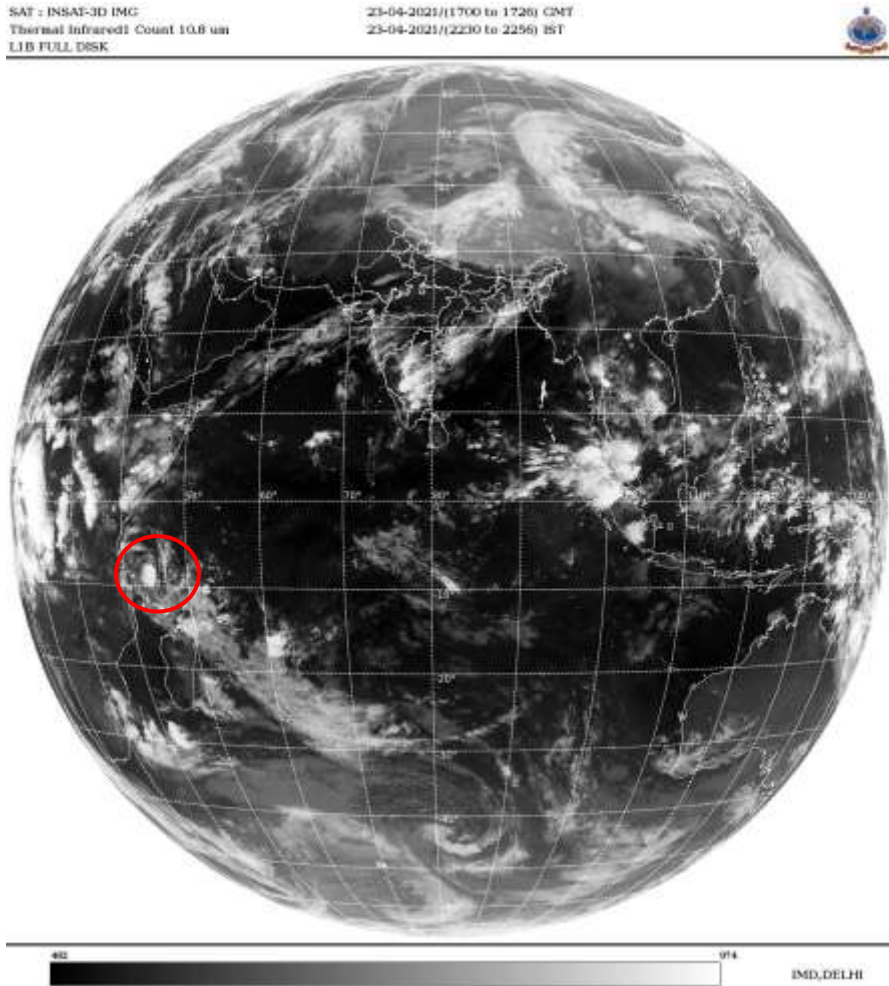
ARABIAN SEA:-

SCT LOW/MED CLOUDS WITH EMBDD MOD TO INT CONVTN OVER SW & NC ARSEA (.)

BAY OF BENGAL & ANDAMAN SEA:-

SCT LOW/MED CLOUDS WITH EMBDD MOD TO INT CONVTN OVER N BAY WC BAY OFF AP-ORS COASTS AND OVER SE BAY (.)

CLOUDS DESCRIPTION OUTSIDE INDIA:-



VORTEX (JOB) OVER SOUTH INDIAN OCEAN:-

VORTEX (JOB) OVER S INDIAN OCEAN CENTERED NEAR 8.3S/43.3E (.) INTENSITY T3.0/3.0 (.) ASSTD BKN LOW/MED CLOUDS WITH EMBDD INT TO V INT CONVTN OVER AREA BET LAT 7.0S TO 11.0S LONG 42.0E TO 47.0E (.)

SCT LOW/MED CLOUDS WITH EMBDD MOD TO INT CONVTN OVER S SRILANKA W NEPAL TIBET CHINA MYANMAR THAILAND CAMBODIA LAOS S VIETNAM GULF OF THAILAND SUMATRA STR OF MALACCA MALAY PENINSULA BORNEO S CHINA SEA CELEBES ILS & SEA PHILIPPINES N MADAGASCAR N MOZAMBIQUE CHANNEL AND OVER INDIAN OCEAN BET LAT 5.0N TO 10.0S LONG 74.0E TO 96.0E AND BET 10.0S TO 30.0S LONG 50.0E TO 70.0E (.)

TOO 23/2315EF=

NNNN

LEGEND:-

REGION	NORTH	J&K HP PJB HARY DLH UP UTRKND
	EAST	BHR JHRKND CHTGH ORS WB SKM NORTH-EAST STATES
	WEST	RAJ MP GUJ MAHA GOA

	SOUTH	TLNGN AP KRNTK KER TN LKSDP ANDAMAN & NICOBAR ILS
--	--------------	--

CLOUD DISTRIBUTION	ISOL	ISOLATED (LESS THAN 25%)
	SCT	SCATTERED (25 TO 50%)
	BKN	BROKEN (51 TO 75%)
	SLD	SOLID (GREATER THAN 75%)
CLOUDS TOP TEMPERATURE	CTT	CLOUD TOP TEMPERATURE
CONVECTION	WK CONVTN	WEAK CONVECTION (CTT GREATER THAN -25°C)
	MOD CONVTN	MODERATE CONVECTION (CTT BETWEEN -25°C TO -40°C)
	INT CONVTN	INTENSE CONVECTION (CTT BETWEEN -41°C TO -70°C)
	V INT CONVTN	VERY INTENSE CONVECTION (CTT LESS THAN -70°C)
METEOROLOGICAL SUB-DIVISIONS, STATES & UNION TERRITORIES	ARUPR	ARUNACHAL PRADESH
	BHR	BIHAR
	CHTGH	CHHATTISGARH
	COTL AP	COASTAL ANDHRA PRADESH
	COTL KRNTK	COASTAL KARNATAKA
	COTL ORS	COASTAL ORISSA
	GUJ	GUJARAT
	GWB	GANGETIC WEST BENGAL
	HARY	HARYANA
	DLH	DELHI
	HP	HIMACHAL PRADESH
	J&K	JAMMU AND KASHMIR
	JHRKND	JHARKHAND
	KER	KERALA
	KKN	KONKAN
	LKSDP	LAKSHADWEEP
	M MAHA	MADHYA MAHARASHTRA
	MAHA	MAHARASHTRA
	MANI	MANIPUR
	MEGHA	MEGHALAYA
	MIZO	MIZORAM
	MP	MADHYA PRADESH
	MRTHWD	MARATHWADA
	NAGA	NAGALAND
	N COTL AP	NORTH COASTAL ANDHRA PRADESH
	NIK	NORTH INTERIOR KARNATAKA
	ORS	ORISSA
	PJB	PUNJAB
RAJ	RAJASTHAN	

	RYLSM	RAYALASEEMA
	SAU & KUTCH	SAURASHTRA & KUTCH
	SHWB	SUB-HIMALAYAN WEST BENGAL
	SIK	SOUTH INTERIOR KARNATAKA
	SKM	SIKKIM
	TLNGN	TELANGANA
	TN	TAMIL NADU
	TRP	TRIPURA
	UP	UTTAR PRADESH
	UTRKND	UTTARAKHAND
	VID	VIDHARBHA
	SHWB	SUB HIMALAYAN WEST BENGAL
	GWB	GANGETIC WEST BENGAL
	ARSEA	ARABIAN SEA
	ILS	ISLANDS
MISCELLANEOUS	ASSW	IN ASSOCIATION WITH
	ASSTD	ASSOCIATED
	LLC	LOW LEVEL CIRCULATION
	EMBDD	EMBEDDED
	N/HOOD	NEIGHBOURHOOD
	EXT	EXTREME