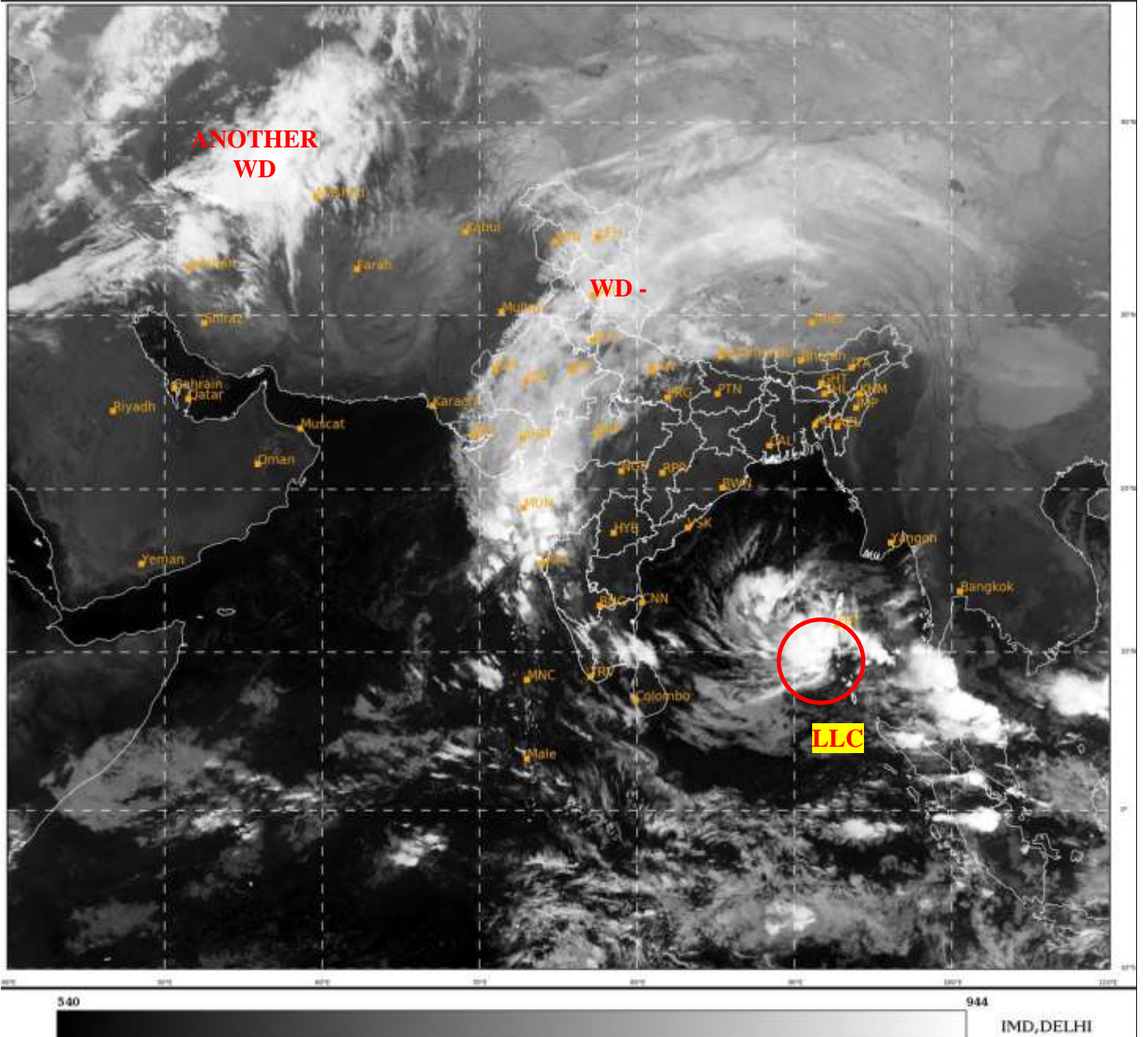




SATELLITE BULLETIN BASED ON SATELLITE
IMAGERIES AND PRODUCTS
01.12.2021 TIME 1800 UTC

SAT : INSAT-3D IMG
IMG_TIRI 10.8 um
LIC Mercator

01-12-2021/(1800 to 1826) GMT
01-12-2021/(2330 to 2356) IST



TCIN50 DEMS 011800

SATELLITE BULLETIN BASED ON INSAT-3D PIC OF 011800 UTC (.)

REGION COVERED BETWEEN LAT 50.0°N TO 30.0°S AND LONG 40.0°E TO 125.0°E (.)

SALIENT FEATURES:-

LLC OVER SE BAY ADJ ANDAMAN SEA:-

LOW LEVEL CIRCULATION (**LLC**) OVER SE BAY ADJ ANDAMAN SEA (.) ASSTD SCT TO BKN LOW/MED CLOUDS WITH EMMDD INT TO V INT CONVTN OVER SE BAY ADJ ANDAMAN SEA ANDAMAN & NICOBAR ILS (.) MINIMUM CTT MINUS **93** DEG C (.)

MICROWAVE IMAGERY FROM SSMIS AT 1238 UTC INDICATES SCT CONVTN WITH EMDD INT TO V INT CONVECTIVE CELLS OVER WESTCENTRAL ANDAMAN SEA ADJ SE BAY (.)

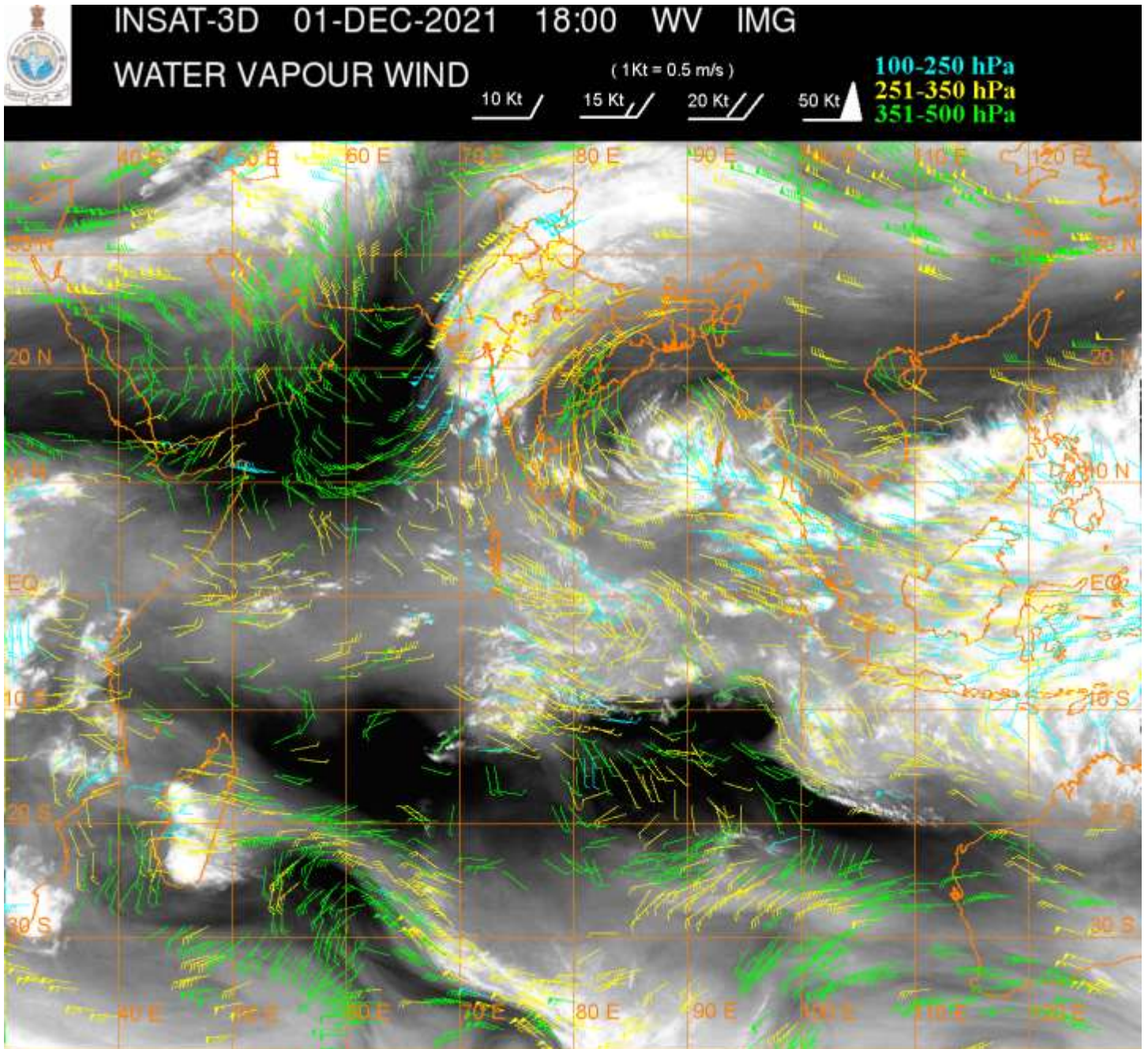
CONVECTION OVER EC ARABIAN SEA OFF MAHARASHTRA COAST & N/HOOD:-

CONVECTION OVER EC ARSEA OFF MAHARASHTRA COAST KKN ADJ MADHYA MAHA PERSISTS DURING LAST 03 HOURS (MINIMUM CTT MINUS **93** DEG C) WITH OUTFLOW OBSERVED OVER NW INDIA CAUSED BY DEEP WESTERLY TROUGH (.) CONVECTION OVER NE ARSEA OFF GUJARAT COAST PERSISTS (.)

WESTERN DISTURBANCE (WD):-

SCT TO BKN MULTILAYERED CLOUDS OVER E PAK J&K LADAKH HP UTRKND PJB HARY DLH UP RAJ W MP GUJ W MAHA NEPAL TIBET IN ASSW **WD** OVER THE AREA (.)

SCT MULTILAYERED CLOUDS OVER CASPIAN SEA IRAN AND N/HOOD IN ASSW **ANOTHER WD** OVER THE AREA (.)



CLOUDS DESCRIPTION WITHIN INDIA:-

NORTH:-

SCT TO BKN LOW/MED CLOUDS WITH EMBDD MOD TO INT CONVTN OVER LADAKH J&K HP UTRKND PJB AND WK TO MOD CONVTN OVER HARY DLH UP (.)

EAST:-

SCT LOW/MED CLOUDS OVER SKM ARUPR NAGA MEGHA MANI (.)

WEST:-

BKN LOW/MED CLOUDS WITH EMBDD INT TO V INT CONVTN OVER KKN MADHYA MAHA (MINIMUM CTT MINUS 93 DEG C) (.) SCT TO BKN LOW/MED CLOUDS WITH EMBDD MOD TO INT CONVTN OVER RAJ W MP GUJ MRTHWD AND WK TO MOD CONVTN OVER NE MP W VID GOA (.)

SOUTH:-

SCT TO BKN LOW/MED CLOUDS WITH EMBDD INT TO V INT CONVTN OVER ANDAMAN ILS (MINIMUM CTT MINUS 93 DEG C) (.) SCT LOW/MED CLOUDS WITH EMBDD MOD TO INT CONVTN OVER W KRNTK N KER C TN AND WK TO MOD CONVTN OVER REST KRNTK REST TN LKSDP & NICOBAR ILS (.) SCT LOW/MED CLOUDS OVER TLNGN RYLSM COTL AP REST KER (.)

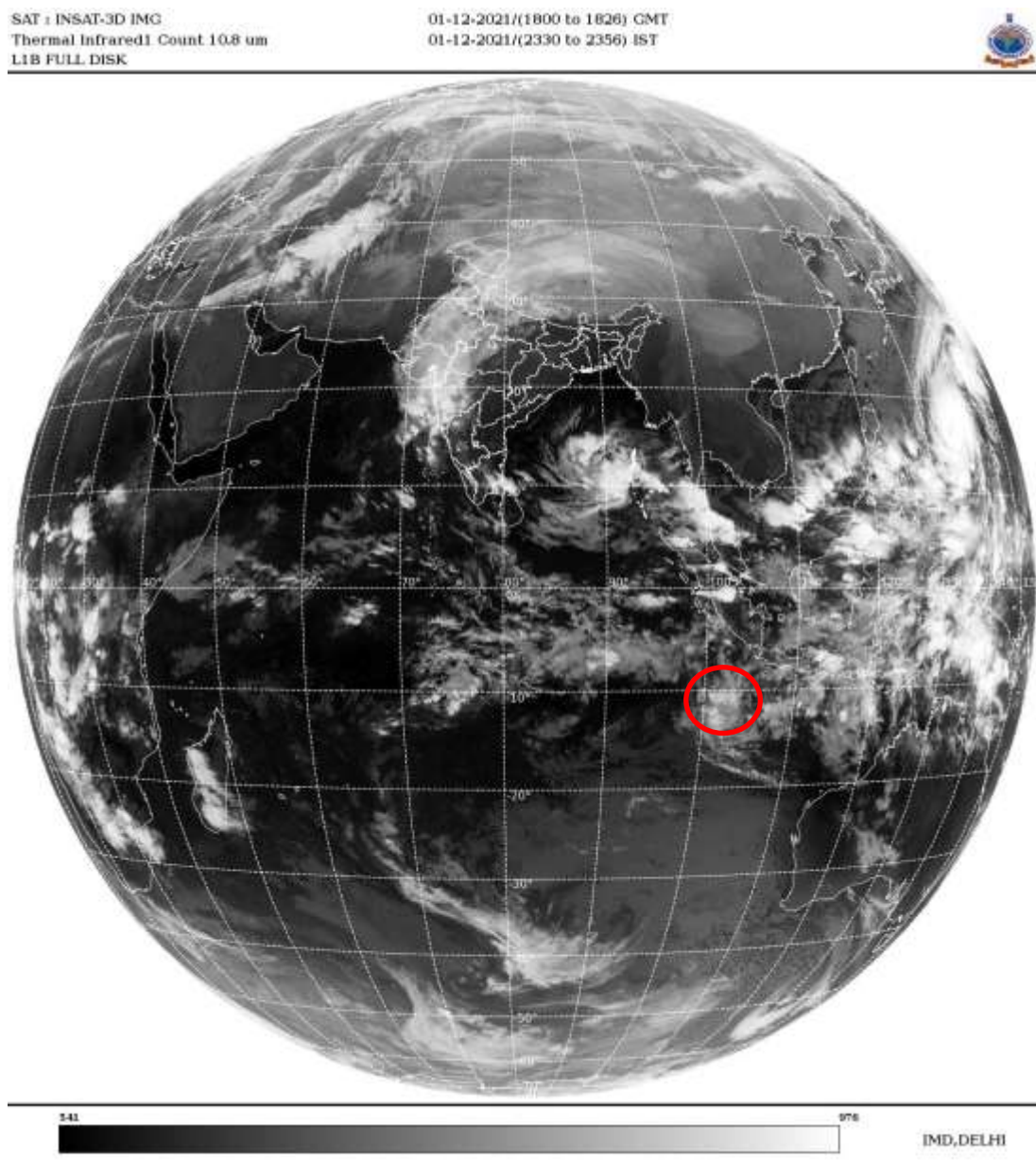
ARABIAN SEA:-

SCT TO BKN LOW/MED CLOUDS WITH EMBDD INT TO V INT CONVTN OVER EC ARSEA OFF MAHA COAST (.) SCT LOW/MED CLOUDS WITH EMBDD MOD TO INT CONVTN OVER NE ARSEA GULF OF KUTCHH GULF OF CAMBAY AND ISOL WK TO MOD CONVTN OVER SE ARSEA (.)

BAY OF BENGAL & ANDAMAN SEA:-

SCT TO BKN LOW/MED CLOUDS WITH EMBDD INT TO V INT CONVTN OVER SEADJ EC BAY & CENTRAL ANDAMAN SEA (.)SCT LOW/MED CLOUDS WITH EMBDD MOD TO INT CONVTN OVER SW BAY PALK STR REST ANDAMAN SEA (.)

CLOUDS DESCRIPTION OUTSIDE INDIA:-



VORTEX OVER SOUTH INDIAN OCEAN (SW OF JAKARTA):-

VORTEX OVER SOUTH INDIAN OCEAN CENTERED NEAR **10.5S / 101.5E** (.) INTENSITY **T1.5/2.0** (.) ASSTD SCT TO BKN LOW/MED CLOUDS WITH EMBDD INT TO V INT CONVTN OVER AREA BET LAT 9.0S TO 14.0S LONG 100.0E TO 104.0E (.)

SCT LOW/MED CLOUDS WITH EMBDD MOD TO INT CONVTN OVER NEPAL TIBET S THAILAND GULF OF THAILAND SUMATRA STR OF MALACCA MALAYSIA SOUTH CHINA SEA BORNEO JAVA ILS & SEA CELEBES ILS & SEA PHILIPPINES SULU SEA MADAGASCAR AND OVER INDIAN OCEAN BET EQ TO 15.0S LONG 71.0E TO 120.0E (.)

TOO 02/0020EF=

NNNN

LEGEND:-

REGION	NORTH	J&K HP PJB HARY DLH UP UTRKND
	EAST	BHR JHRKND CHTGH ORS WB SKM NORTH- EAST STATES
	WEST	RAJ MP GUJ MAHA GOA
	SOUTH	TLNGN AP KRNTK KER TN LKSDP ANDAMAN & NICOBAR ILS

CLOUD DISTRIBUTION	ISOL	ISOLATED (LESS THAN 25%)
	SCT	SCATTERED (25 TO 50%)
	BKN	BROKEN (51 TO 75%)
	SLD	SOLID (GREATER THAN 75%)
CLOUDS TOP TEMPERATURE	CTT	CLOUD TOP TEMPERATURE
CONVECTION	WK CONVTN	WEAK CONVECTION (CTT GREATER THAN -25°C)
	MOD CONVTN	MODERATE CONVECTION (CTT BETWEEN -25°C TO -40°C)
	INT CONVTN	INTENSE CONVECTION (CTT BETWEEN -41°C TO -70°C)
	V INT CONVTN	VERY INTENSE CONVECTION (CTT LESS THAN -70°C)
METEOROLOGICAL SUB-DIVISIONS, STATES & UNION TERRITORIES	ARUPR	ARUNACHAL PRADESH
	BHR	BIHAR
	CHTGH	CHHATTISGARH
	COTL AP	COASTAL ANDHRA PRADESH
	COTL KRNTK	COASTAL KARNATAKA
	COTL ORS	COASTAL ORISSA
	GUJ	GUJARAT
	GWB	GANGETIC WEST BENGAL
	HARY	HARYANA
	DLH	DELHI
	HP	HIMACHAL PRADESH
	J&K	JAMMU AND KASHMIR
	JHRKND	JHARKHAND
	KER	KERALA
	KKN	KONKAN
	LKSDP	LAKSHADWEEP
	M MAHA	MADHYA MAHARASHTRA
	MAHA	MAHARASHTRA
	MANI	MANIPUR
	MEGHA	MEGHALAYA
	MIZO	MIZORAM
	MP	MADHYA PRADESH
	MRTHWD	MARATHWADA
	NAGA	NAGALAND

	N COTL AP	NORTH COASTAL ANDHRA PRADESH
	NIK	NORTH INTERIOR KARNATAKA
	ORS	ORISSA
	PJB	PUNJAB
	RAJ	RAJASTHAN
	RYLSM	RAYALASEEMA
	SAU & KUTCH	SAURASHTRA & KUTCH
	SHWB	SUB-HIMALAYAN WEST BENGAL
	SIK	SOUTH INTERIOR KARNATAKA
	SKM	SIKKIM
	TLNGN	TELANGANA
	TN	TAMIL NADU
	TRP	TRIPURA
	UP	UTTAR PRADESH
	UTRKN	UTTARAKHAND
	VID	VIDHARBHA
	SHWB	SUB HIMALAYAN WEST BENGAL
	GWB	GANGETIC WEST BENGAL
	ARSEA	ARABIAN SEA
	ILS	ISLANDS
MISCELLANEOUS	ASSW	IN ASSOCIATION WITH
	ASSTD	ASSOCIATED
	LLC	LOW LEVEL CIRCULATION
	EMBDD	EMBEDDED
	N/HOOD	NEIGHBOURHOOD
	EXT	EXTREME