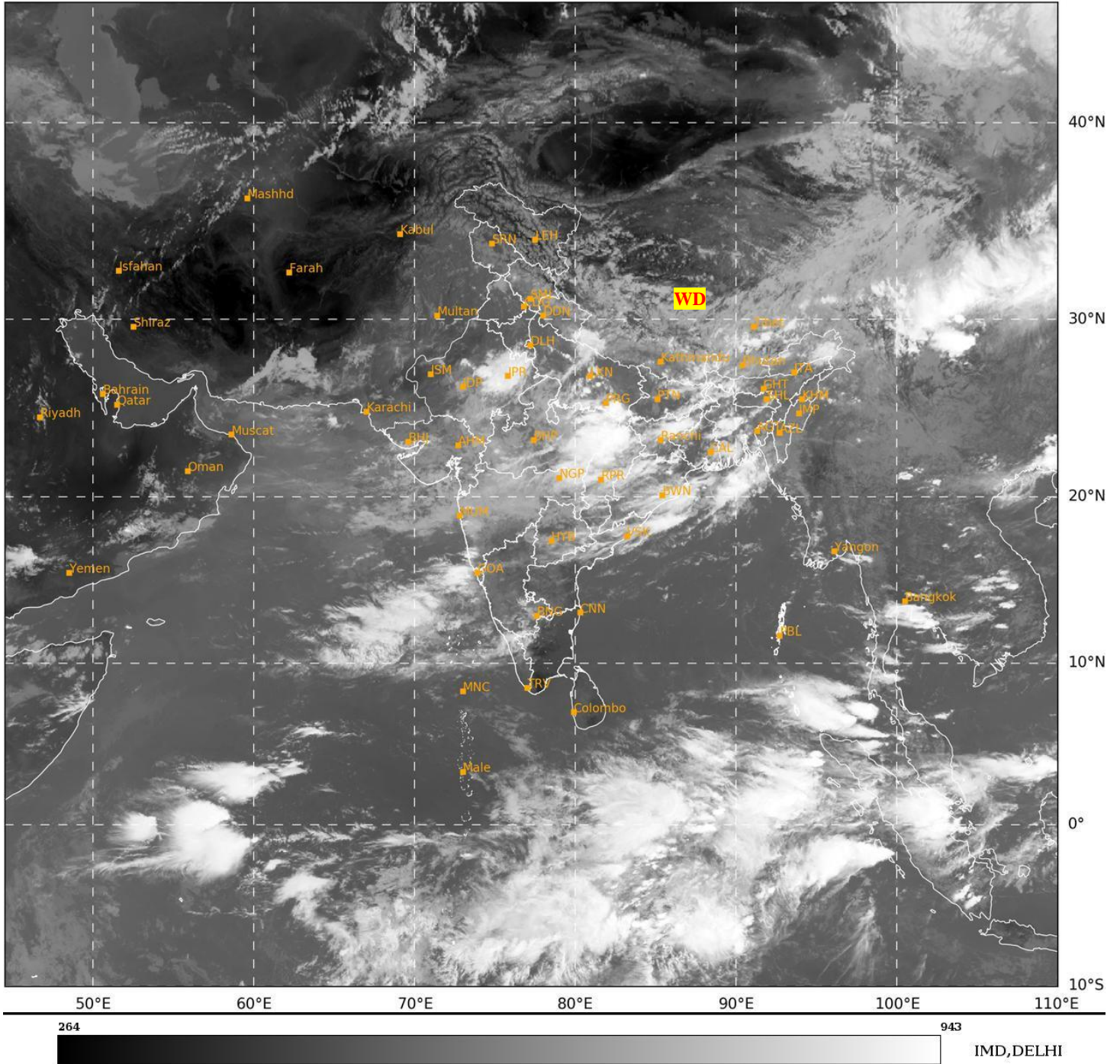




**SATELLITE BULLETIN BASED ON SATELLITE
IMAGERIES AND PRODUCTS**
09.08.2024 TIME 0600 UTC

SAT : INSAT-3DR IMG
IMG_TIR1 10.8 um
L1C Mercator

09-08-2024/(0545 to 0612) GMT
09-08-2024/(1115 to 1142) IST



TCIN50 DEMS 090600

SATELLITE BULLETIN BASED ON INSAT-3DR PIC OF 090545 UTC (.)

REGION COVERED BETWEEN LAT 50.0°N TO 35.0°S AND LONG 40.0°E TO 125.0°E (.)

SALIENT FEATURES:-

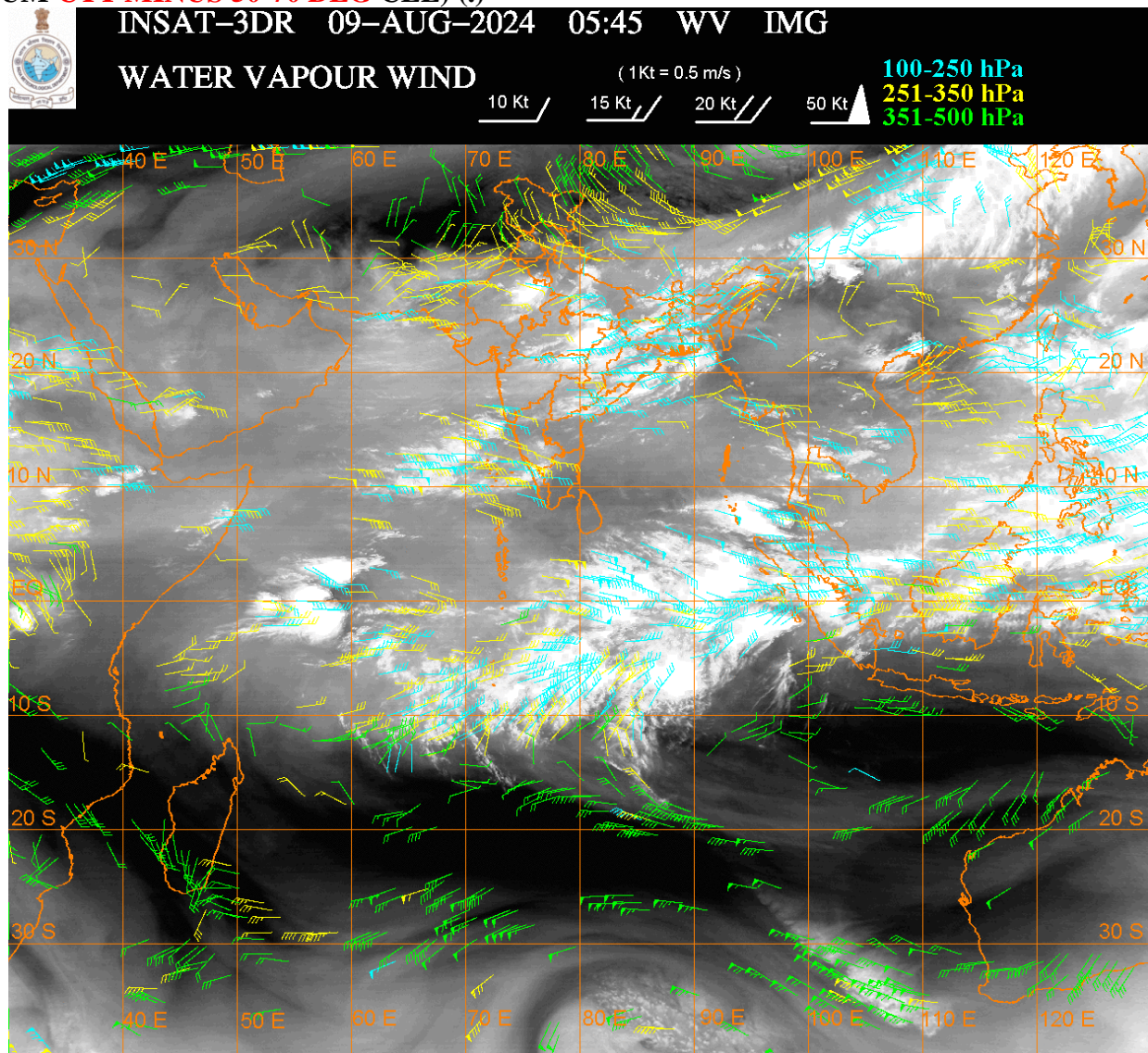
WESTERN DISTURBANCE (WD) :-

SCT MULTILAYERED CLOUDS OVER TIBET ADJ CHINA IN ASSW **WD** OVER THE AREA (.)

CONVECTIVE / THUNDERSTORM ACTIVITY:-

INTENSE TO VERY INTENSE CONVECTIVE / THUNDERSTORM ACTIVITY OVER NE RAJ E UP E MP N CHTGH S GWB (MINIMUM **CTT MINUS 80-90 DEG CEL**) (.)

**MODERATE TO INTENSE CONVECTIVE / THUNDERSTORM ACTIVITY OVER S HARY W UP N
GWB SHWB SKM W ASSAM MEGHA E ARUPR NW TN N KER LKSDP ILS & NICOBAR ILS AREA
(MINIMUM CTT MINUS 50-70 DEG CEL) (.)**



CLOUDS DESCRIPTION WITHIN INDIA:-

NORTH:-

SCT LOW/MED CLOUDS WITH EMBDD INT TO V INT CONVTN OVER E UP (.) SCT LOW/MED CLOUDS WITH EMBDD MOD TO INT CONVTN OVER S HARY N PJB W UP AND ISOL WK TO MOD CONVTN OVER LADAKH J&K UTRKND DLH (.) SCT LOW/MED CLOUDS OVER S PJB REST HARY HP (.)

EAST:-

SCT LOW/MED CLOUDS WITH EMBDD INT TO V INT CONVTN OVER N CHTGH S GWB & S BD (.) SCT LOW/MED CLOUDS WITH EMBDD MOD TO INT CONVTN OVER BHR JHRKND ORS N GWB SHWB SKM E ARUPR W ASSAM MEGHA N BD AND ISOL WK TO MOD CONVTN OVER S CHTGH REST NE STATES (.)

WEST:-

SCT LOW/MED CLOUDS WITH EMBDD INT TO V INT CONVTN OVER NE RAJ E MP E VID (.) SCT LOW/MED CLOUDS WITH EMBDD MOD TO INT CONVTN OVER W MP S M MAHA KKN AND WK TO MOD CONVTN OVER REST RAJ GUJ REST MAHA & GOA (.)

SOUTH:-

SCT LOW/MED CLOUDS WITH EMBDD MOD TO INT CONVTN OVER N COTL AP SIK N KER NW TN LKSDP ILS NICOBAR ILS AND ISOL WK TO MOD CONVTN OVER TLNGN RYLSM S COTL AP REST KRNTK S KER S TN & ANDAMAN & NICOBAR ILS (.)

ARABIAN SEA:-

SCT LOW/MED CLOUDS WITH EMBDD INT TO V INT CONVTN OVER SE ADJ EC ARSEA & LKSDP ILS AREA (.) SCT LOW/MED CLOUDS WITH EMBDD ISOL WK TO MOD CONVTN OVER REST ARSEA GULF OF KUTCH GULF OF CAMBAY MALDIVES AREA & COMORIN AREA (.)

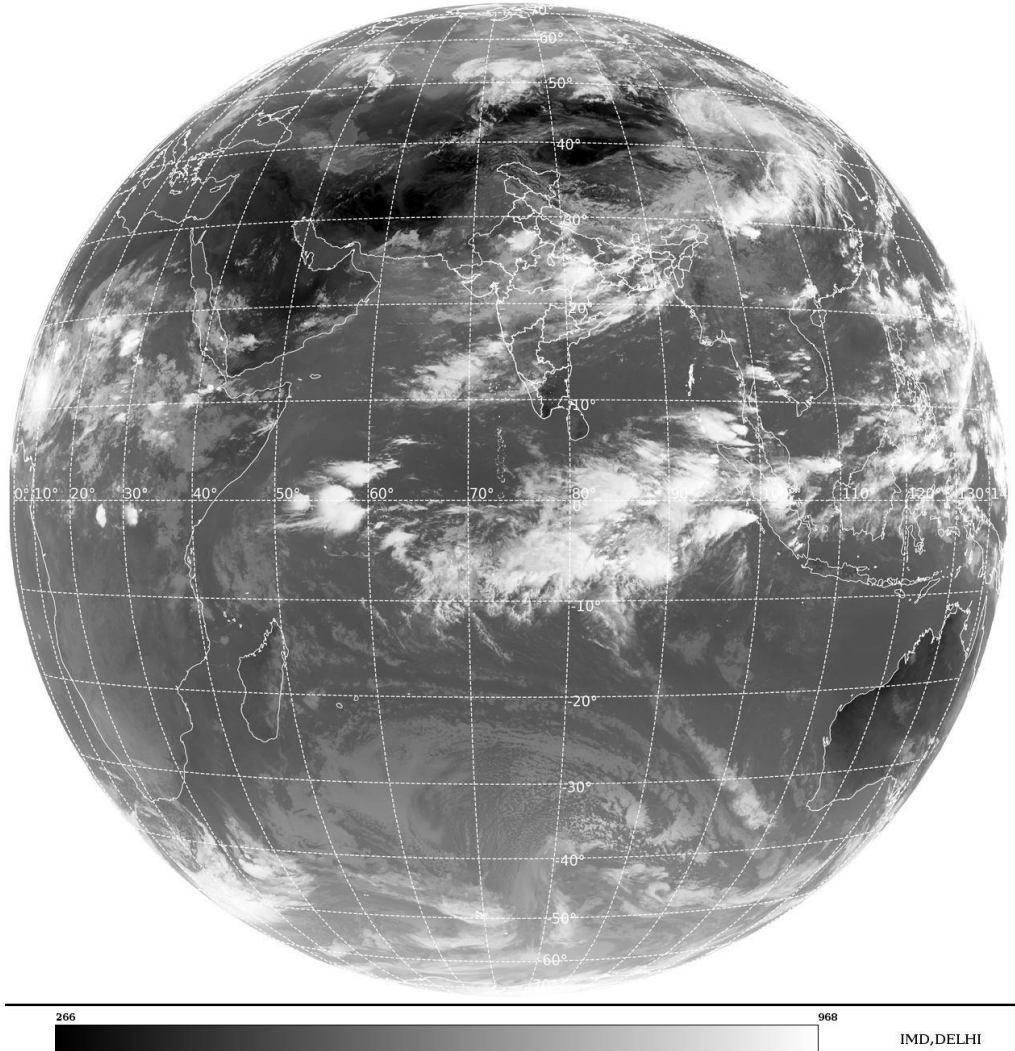
BAY OF BENGAL & ANDAMAN SEA:-

SCT LOW/MED CLOUDS WITH EMBDD INT TO V INT CONVTN OVER NORTH ADJ WEST CENTRAL BAY S ANDAMAN SEA (.) SCT LOW/MED CLOUDS WITH EMBDD ISOL WK TO MOD CONVTN OVER REST BAY & N ANDAMAN SEA (.)

CLOUDS DESCRIPTION OUTSIDE INDIA:-

SAT : INSAT-3DR IMG
Thermal Infrared1 Count 10.8 um
LIB FULL DISK

09-08-2024/(0545 to 0612) GMT
09-08-2024/(1115 to 1142) IST



SCT LOW/MED CLOUDS WITH EMBDD MOD TO INT CONVTN OVER MALDIVES PAK NEPAL BHUTAN TIBET CHINA MYANMAR THAILAND GULF OF THAILAND VIETNAM SUMATRA STR OF MALACCA MALAY PENISULA BORNEO SOUTH CHINA SEA JAVA ILS CELEBES ILS & SEA PHILIPPINES TAIWAN EAST CHINA SEA YELLOW SEA AND OVER INDIAN OCEAN BET LAT 5.0N TO 16.0S LONG 50.0E TO 100.0E (.)

TOO 09/1230 HRS IST=

NNNN

LEGEND:-

REGION	NORTH	J&K HP PJB HARY DLH UP UTRKND
	EAST	BHR JHRKND CHTGH OR WB SKM NORTH- EAST STATES
	WEST	RAJ MP GUJ MAHA GOA
	SOUTH	TLNGN AP KRNTK KER TN LKSDP ANDAMAN & NICOBAR ILS

CLOUD DISTRIBUTION	ISOL	ISOLATED (LESS THAN 25%)	
	SCT	SCATTERED (25 TO 50%)	
	BKN	BROKEN (51 TO 75%)	
	SLD	SOLID (GREATER THAN 75%)	
CLOUDS TOP TEMPERATURE	CTT	CLOUD TOP TEMPERATURE	
CONVECTION	WK CONVTN	WEAK CONVECTION (CTT GREATER THAN -25°C)	
	MOD CONVTN	MODERATE CONVECTION (CTT BETWEEN -25°C TO -40°C)	
	INT CONVTN	INTENSE CONVECTION (CTT BETWEEN -41°C TO -70°C)	
	V INT CONVTN	VERY INTENSE CONVECTION (CTT LESS THAN -70°C)	
METEOROLOGICAL SUB- DIVISIONS, STATES & UNION TERRITORIES	ARUPR	ARUNACHAL PRADESH	
	BHR	BIHAR	
	CHTGH	CHHATTISGARH	
	COTL AP	COASTAL ANDHRA PRADESH	
	COTL KRNTK	COASTAL KARNATAKA	
	COTL ORS	COASTAL ORISSA	
	GUJ	GUJARAT	
	GWB	GANGETIC WEST BENGAL	
	HARY	HARYANA	
	DLH	DELHI	
	HP	HIMACHAL PRADESH	
	J&K	JAMMU AND KASHMIR	
	JHRKND	JHARKHAND	
	KER	KERALA	
	KKN	KONKAN	
	LKSDP	LAKSHADWEEP	
	M MAHA	MADHYA MAHARASHTRA	
	MAHA	MAHARASHTRA	
	MANI	MANIPUR	
	MEGHA	MEGHALAYA	
	MIZO	MIZORAM	
	MP	MADHYA PRADESH	
		MRTHWD	MARATHWADA
		NAGA	NAGALAND
N COTL AP		NORTH COASTAL ANDHRA PRADESH	
NIK		NORTH INTERIOR KARNATAKA	
ORS		ORISSA	
PJB		PUNJAB	
RAJ		RAJASTHAN	
RYLSM		RAYALASEEMA	
SAU & KUTCH		SAURASHTRA & KUTCH	
SHWB		SUB-HIMALAYAN WEST BENGAL	
SIK		SOUTH INTERIOR KARNATAKA	
SKM		SIKKIM	

	TLNGN	TELANGANA
	TN	TAMIL NADU
	TRP	TRIPURA
	UP	UTTAR PRADESH
	UTRKND	UTTARAKHAND
	VID	VIDHARBHA
	SHWB	SUB HIMALAYAN WEST BENGAL
	GWB	GANGETIC WEST BENGAL
	ARSEA	ARABIAN SEA
	ILS	ISLANDS
MISCELLANEOUS	ASSW	IN ASSOCIATION WITH
	ASSTD	ASSOCIATED
	LLC	LOW LEVEL CIRCULATION
	EMBDD	EMBEDDED
	N/HOOD	NEIGHBOURHOOD
	EXT	EXTREME