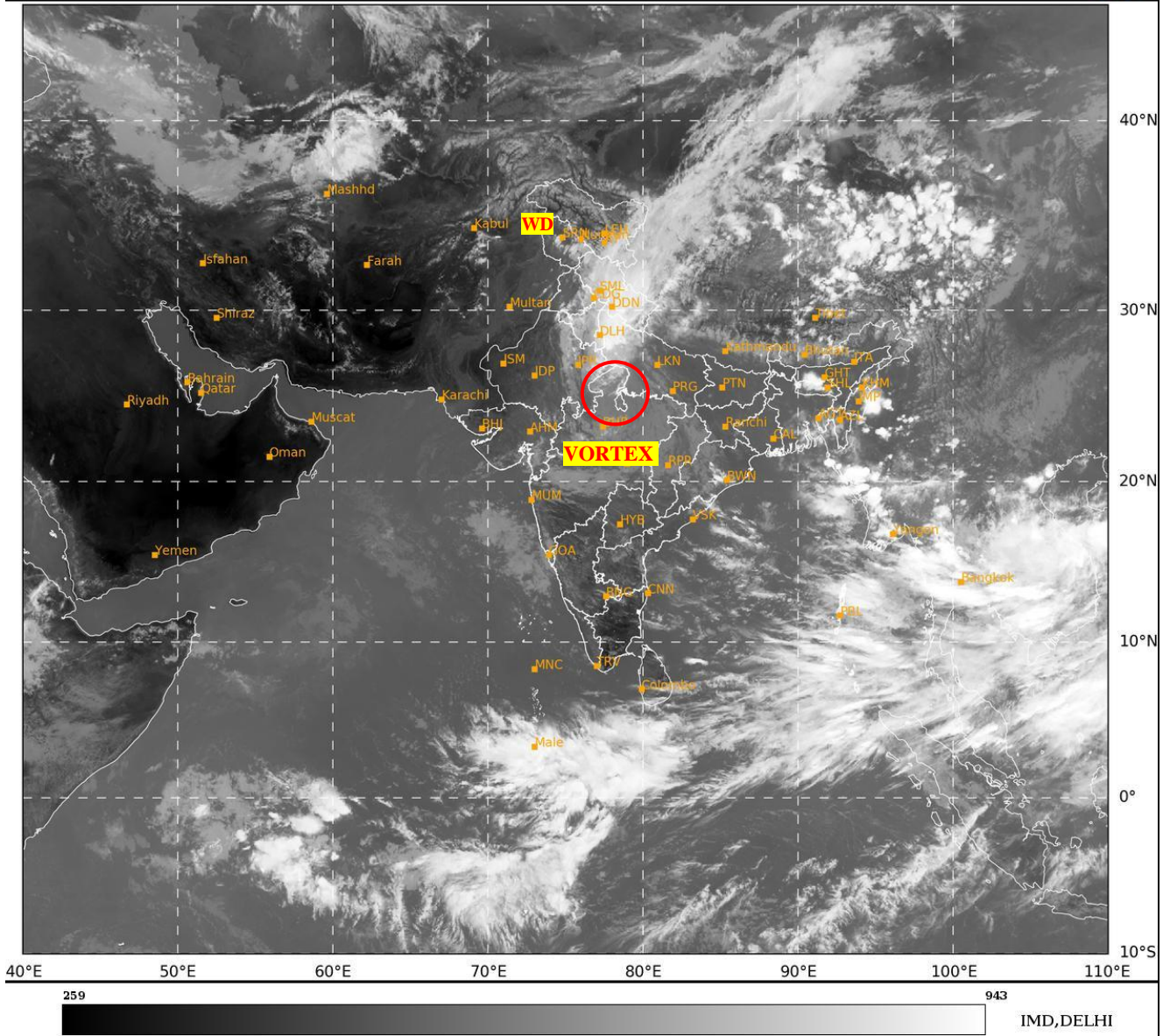




**SATELLITE BULLETIN BASED ON SATELLITE
IMAGERIES AND PRODUCTS**
18.09.2024 TIME 0900 UTC

SAT : INSAT-3DR IMG
IMG_TIR1 10.8 um
LIC Mercator

18-09-2024/(0845 to 0912) GMT
18-09-2024/(1415 to 1442) IST



TCIN50 DEMS 180900

SATELLITE BULLETIN BASED ON INSAT-3DR PIC OF 180845 UTC (.)

REGION COVERED BETWEEN LAT 50.0°N TO 35.0°S AND LONG 40.0°E TO 125.0°E (.)

SALIENT FEATURES:-

VORTEX OVER NORTH-WEST MADHYA PRADESH & N/HOOD:-

VORTEX OVER NW MP & N/HOOD (.) ASSTD SCT TO BKN LOW/MED CLOUDS WITH EMBDD MOD TO INT CONVTN OVER NW MP NW UP HP UTRKND HARY DLH (MINIMUM **CTT MINUS 50-68 DEG CEL**) (.)

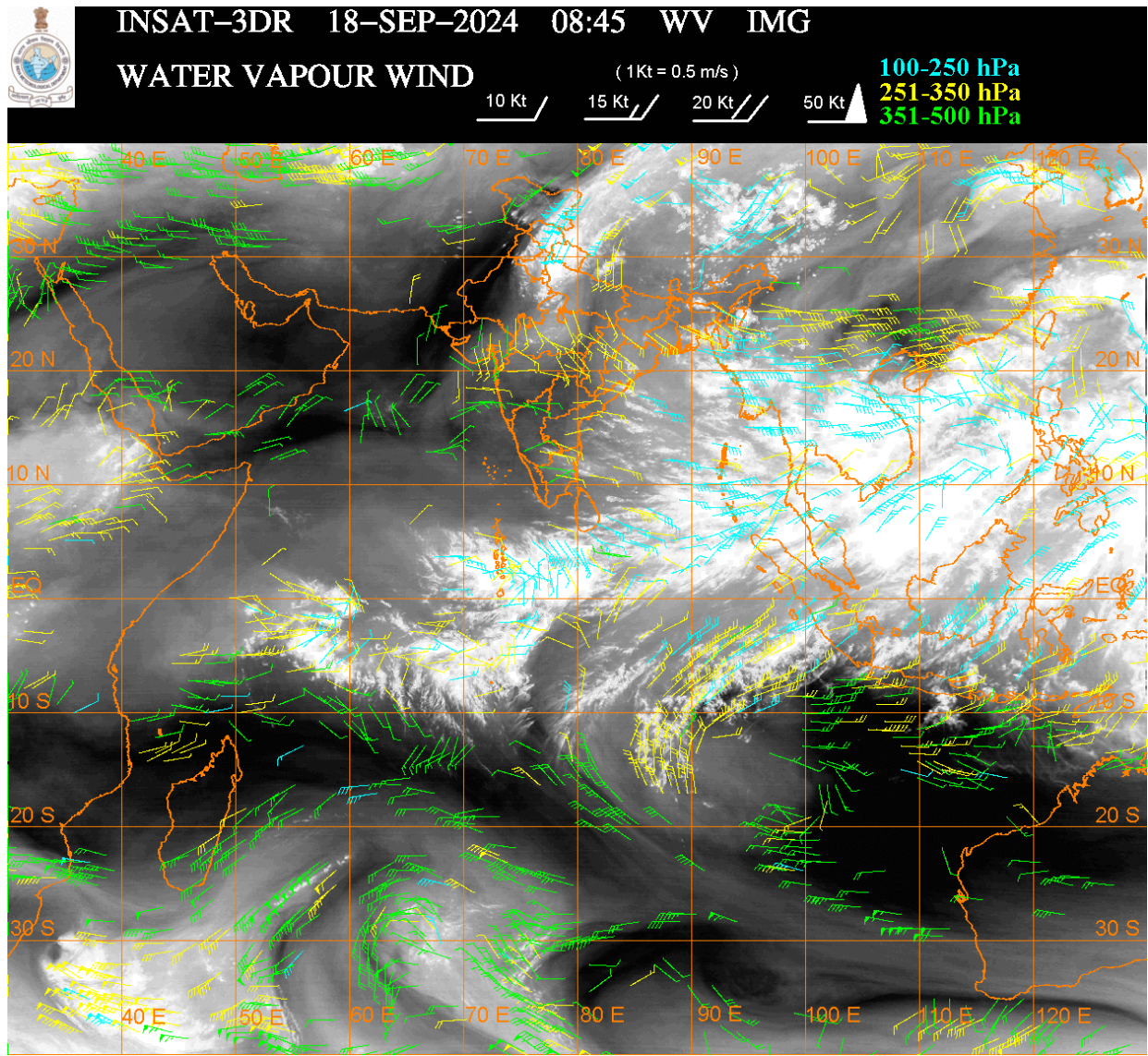
WESTERN DISTURBANCE (WD):-

SCT MULTILAYERED CLOUDS OVER LADAKH J&K HP UTRKND TIBET ADJ CHINA IN ASSW **WD** OVER THE AREA (.)

CONVECTIVE / THUNDERSTORM ACTIVITY:-

INTENSE TO VERY INTENSE CONVECTIVE / THUNDERSTORM ACTIVITY OBSERVED OVER W ASSAM ADJ N MEGHA (MINIMUM **CTT MINUS 70-90 DEG CEL**) (.)

MODERATE TO INTENSE CONVECTIVE / THUNDERSTORM ACTIVITY OBSERVED OVER HP UTRKND NW UP EC ORS W ARUPR NAGA MANI NW MP NE RAJ ANDAMAN & NICOBAR ILS (MINIMUM CTT MINUS 50-70 DEG CEL) (.)



CLOUDS DESCRIPTION WITHIN INDIA:-

NORTH:-

SCT TO BKN LOW/MED CLOUDS WITH EMBDD MOD TO INT CONVTN OVER HP UTRKND NW UP (.) SCT LOW/MED CLOUDS WITH EMBDD WK TO MOD TO INT CONVTN OVER LADAKH J&K E PJB HARY DLH SW UP (.) SCT LOW/MED CLOUDS OVER W PJB E UP (.)

EAST:-

SCT LOW/MED CLOUDS WITH EMBDD ISOL INT TO V INT CONVTN OVER W ASSAM ADJ N MEGHA AND MOD TO INT CONVTN OVER EC ORS W ARUPR NAGA MANI (.) AND ISOL WK TO MOD CONVTN OVER NW ORS SKM E ARUPR MIZO TRP (.) SCT LOW/MED CLOUDS OVER BHR JHRKND CHTGH REST ORS GWB SHWB REST NE STATES (.)

WEST:-

SCT LOW/MED CLOUDS WITH EMBDD MOD TO INT CONVTN OVER NW MP NE RAJ (.) SCT LOW/MED CLOUDS WITH EMBDD ISOL WK TO MOD CONVTN OVER SE RAJ S GUJ REST MP VID NORTH MADHYA MAHA (.) SCT LOW/MED CLOUDS OVER W RAJ N GUJ REST MAHA & GOA (.)

SOUTH:-

SCT LOW/MED CLOUDS WITH EMBDD MOD TO INT CONVTN OVER ANDAMAN & NICOBAR ILS (.) SCT LOW/MED CLOUDS WITH EMBDD ISOL WK TO MOD CONVTN OVER SIK N COTL AP (.) SCT LOW/MED CLOUDS OVER TLNGN REST KRNTK RYLSM S COTL AP KER TN & LKSDP ILS (.)

ARABIAN SEA:-

SCT LOW/MED CLOUDS WITH EMBDD MOD TO INT CONVTN OVER SOUTH PARTS OF SE ARSEA MALDIVES AREA AND ISOL WK CONVTN OVER SW & EC ARSEA (.)

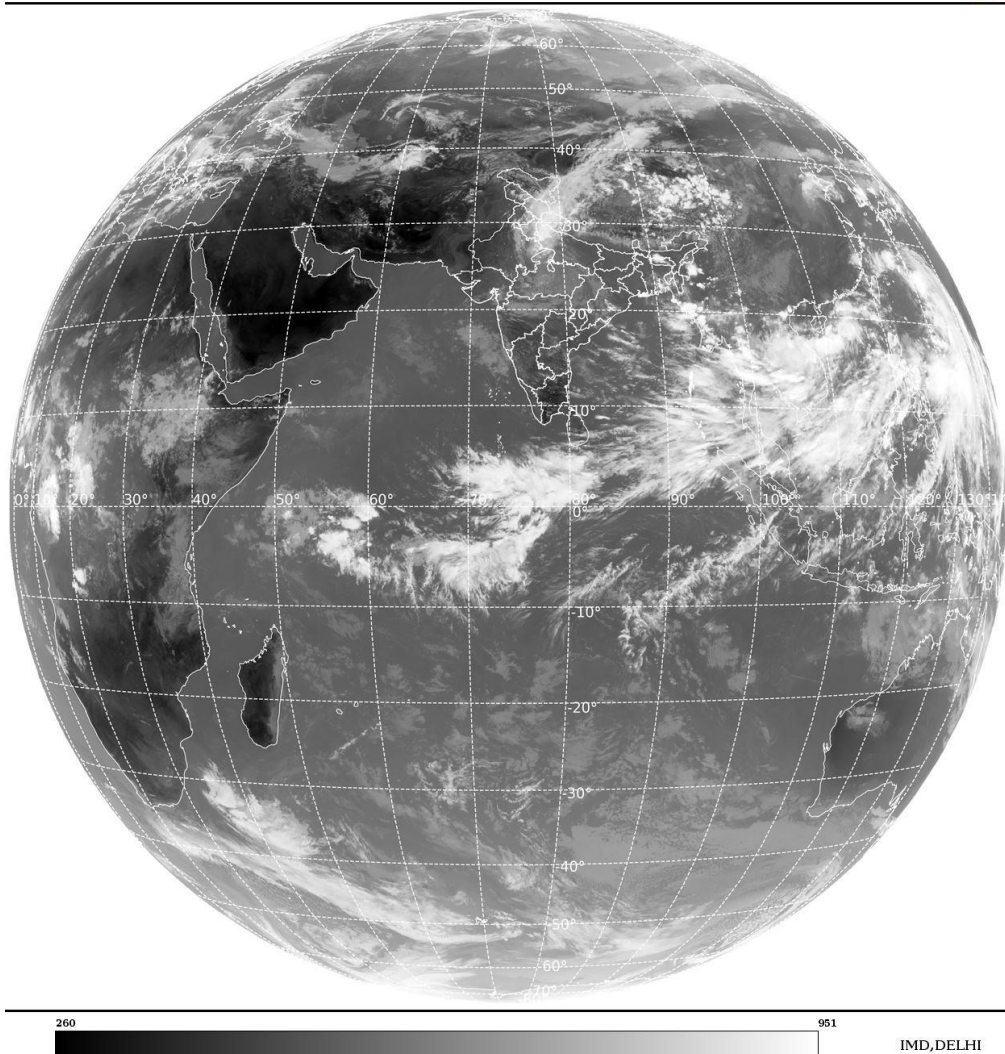
BAY OF BENGAL & ANDAMAN SEA:-

SCT LOW/MED CLOUDS WITH EMBDD INT TO V INT CONV TN OVER SOUTH BAY ANDAMAN SEA (MINIMUM CTT MINUS 70-90 DEG CEL) (.). SCT LOW/MED CLOUDS WITH EMBDD MOD TO INT CONV TN OVER NE & CENTRAL BAY ARAKAN COAST GULF OF MARTABAN AND ISOL WK CONV TN OVER REST BAY (.).

CLOUDS DESCRIPTION OUTSIDE INDIA:-

SAT : INSAT-3DR IMG
Thermal Infrared1 Count 10.8 um
L1B FULL DISK

18-09-2024/(0845 to 0912) GMT
18-09-2024/(1415 to 1442) IST



SCT LOW/MED CLOUDS WITH EMBDD MOD TO INT CONV TN OVER SRI LANKA MALDIVES NEPAL TIBET CHINA MYANMAR THAILAND GULF OF THAILAND CAMBODIA LAOS VIETNAM GULF OF TONKIN HAINAN TAIWAN SUMATRA STR OF MALACCA MALAYSIA BORNEO SOUTH CHINA SEA CELEBES ILS & SEA PHILIPPINES SULU SEA AND OVER INDIAN OCEAN BET LAT 5.0N TO 10.0S LONG 50.0E TO 100.0E AND BET LAT 27.0S TO 35.0S LONG 30.0E TO 80.0E (.).

TOO 18/1520 HRS IST=

NNNN

LEGEND:-

REGION	NORTH	J&K HP PJB HARY DLH UP UTRKND
	EAST	BHR JHRKND CHTGH OR WB SKM NORTH- EAST STATES
	WEST	RAJ MP GUJ MAHA GOA
	SOUTH	TLNGN AP KRNTK KER TN LKSDP ANDAMAN & NICOBAR ILS

CLOUD DISTRIBUTION	ISOL	ISOLATED (LESS THAN 25%)	
	SCT	SCATTERED (25 TO 50%)	
	BKN	BROKEN (51 TO 75%)	
	SLD	SOLID (GREATER THAN 75%)	
CLOUDS TOP TEMPERATURE	CTT	CLOUD TOP TEMPERATURE	
CONVECTION	WK CONVTN	WEAK CONVECTION (CTT GREATER THAN -25°C)	
	MOD CONVTN	MODERATE CONVECTION (CTT BETWEEN -25°C TO -40°C)	
	INT CONVTN	INTENSE CONVECTION (CTT BETWEEN -41°C TO -70°C)	
	V INT CONVTN	VERY INTENSE CONVECTION (CTT LESS THAN -70°C)	
METEOROLOGICAL SUB- DIVISIONS, STATES & UNION TERRITORIES	ARUPR	ARUNACHAL PRADESH	
	BHR	BIHAR	
	CHTGH	CHHATTISGARH	
	COTL AP	COASTAL ANDHRA PRADESH	
	COTL KRNTK	COASTAL KARNATAKA	
	COTL ORS	COASTAL ORISSA	
	GUJ	GUJARAT	
	GWB	GANGETIC WEST BENGAL	
	HARY	HARYANA	
	DLH	DELHI	
	HP	HIMACHAL PRADESH	
	J&K	JAMMU AND KASHMIR	
	JHRKND	JHARKHAND	
	KER	KERALA	
	KKN	KONKAN	
	LKSDP	LAKSHADWEEP	
	M MAHA	MADHYA MAHARASHTRA	
	MAHA	MAHARASHTRA	
	MANI	MANIPUR	
	MEGHA	MEGHALAYA	
	MIZO	MIZORAM	
	MP	MADHYA PRADESH	
		MRTHWD	MARATHWADA
		NAGA	NAGALAND
N COTL AP		NORTH COASTAL ANDHRA PRADESH	
NIK		NORTH INTERIOR KARNATAKA	
ORS		ORISSA	
PJB		PUNJAB	
RAJ		RAJASTHAN	
RYLSM		RAYALASEEMA	
SAU & KUTCH		SAURASHTRA & KUTCH	
SHWB		SUB-HIMALAYAN WEST BENGAL	
SIK		SOUTH INTERIOR KARNATAKA	
SKM		SIKKIM	

	TLNGN	TELANGANA
	TN	TAMIL NADU
	TRP	TRIPURA
	UP	UTTAR PRADESH
	UTRKND	UTTARAKHAND
	VID	VIDHARBHA
	SHWB	SUB HIMALAYAN WEST BENGAL
	GWB	GANGETIC WEST BENGAL
	ARSEA	ARABIAN SEA
	ILS	ISLANDS
MISCELLANEOUS	ASSW	IN ASSOCIATION WITH
	ASSTD	ASSOCIATED
	LLC	LOW LEVEL CIRCULATION
	EMBDD	EMBEDDED
	N/HOOD	NEIGHBOURHOOD
	EXT	EXTREME