



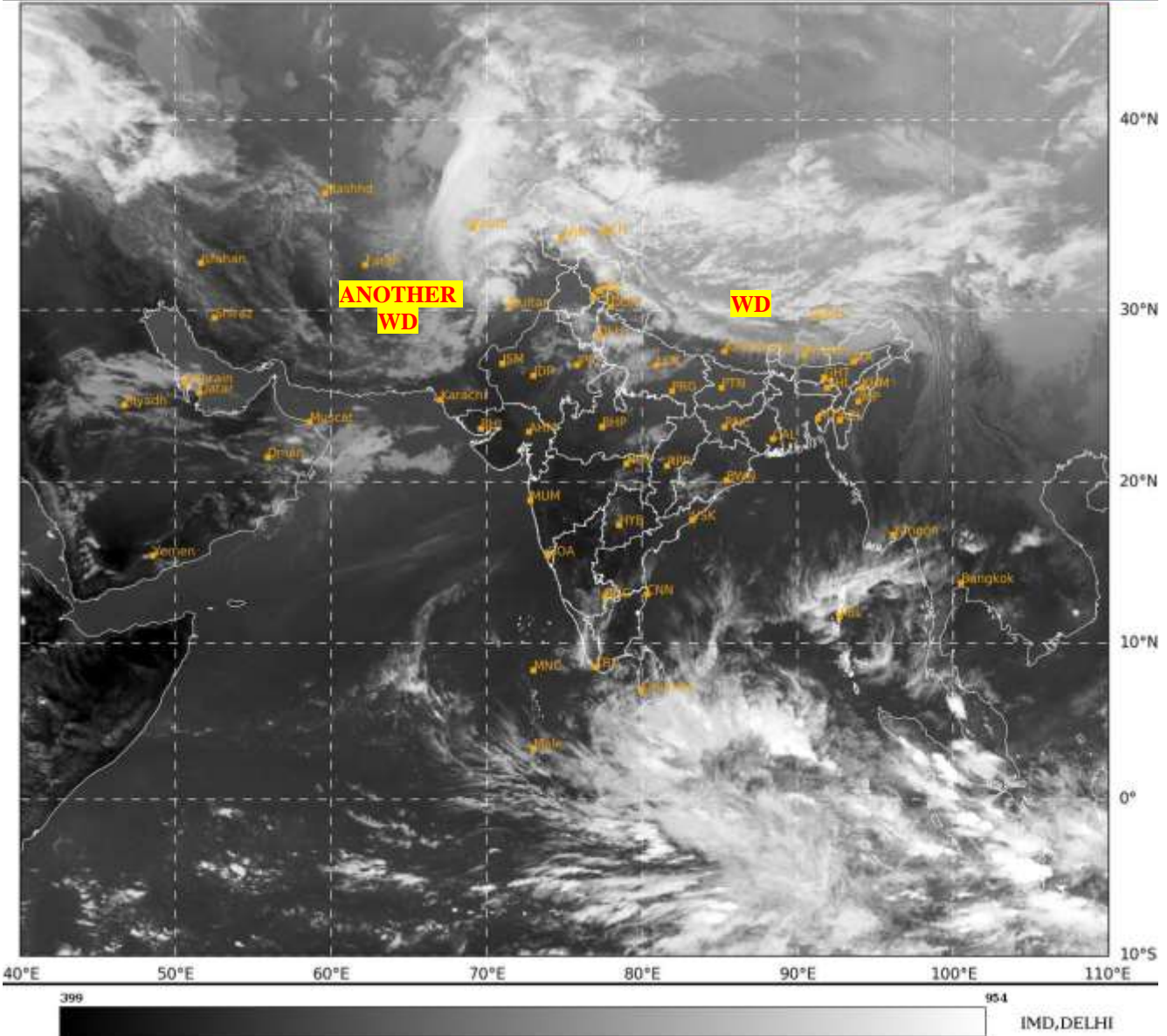
भारत मौसम विज्ञान विभाग
पृथ्वी विज्ञान मंत्रालय
India Meteorological Department
Ministry of Earth Sciences



**SATELLITE BULLETIN BASED ON SATELLITE
IMAGERIES AND PRODUCTS**
06.03.2024 TIME 1200 UTC

SAT : INSAT-3D IMG
IMG_TIR1 10.8 um
LIC Mercator

06-03-2024/(1200 to 1226) GMT
06-03-2024/(1730 to 1756) IST



TCIN50 DEMS 061200

SATELLITE BULLETIN BASED ON INSAT- 3D PIC OF 061200 UTC (.)

REGION COVERED BETWEEN LAT 50.0°N TO 35.0°S AND LONG 40.0°E TO 125.0°E (.)

SALIENT FEATURES:-

WESTERN DISTURBANCE:-

SCT MULTILAYERED CLOUDS OVER TIBET ADJ CHINA IN ASSW **WD** OVER THE AREA (.)

SCT MULTILAYERED CLOUDS OVER AFGAN PAK LADAKH J&K AND N/HOOD IN ASSW **ANOTHER WD** OVER THE AREA (.)



INSAT-3DR 06-MAR-2024 11:45 WV IMG

WATER VAPOUR WIND

(1Kt = 0.5 m/s)

10 Kt

15 Kt

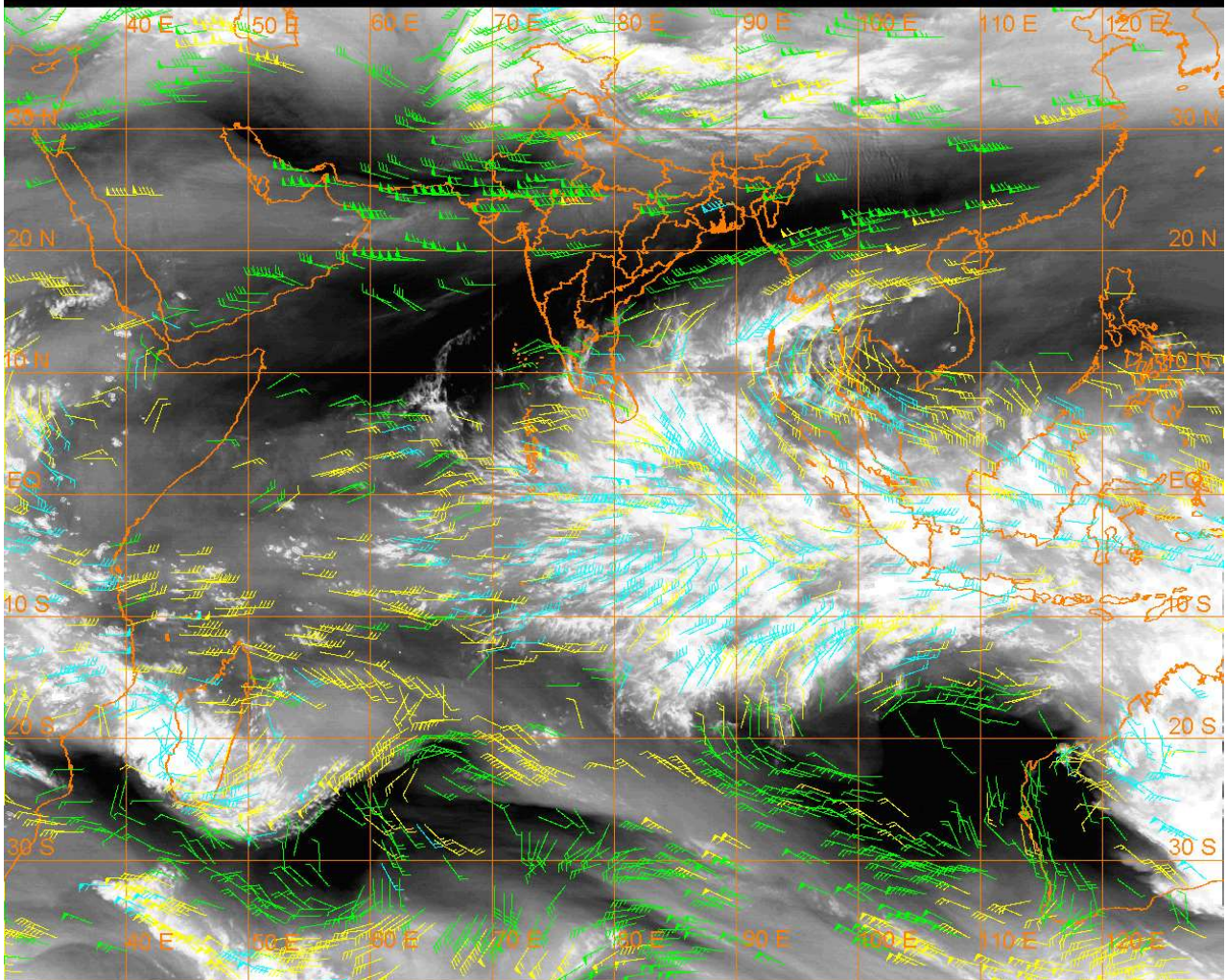
20 Kt

50 Kt

100-250 hPa

251-350 hPa

351-500 hPa



CLOUDS DESCRIPTION WITHIN INDIA:-

NORTH:-

SCT LOW/MED CLOUDS WITH EMBDD ISOL MOD TO INT CONVTN OVER NW LADAKH N HP (.)
SCT LOW/MED CLOUDS WITH EMBDD ISOL WK TO MOD CONVTN OVER REST LADAKH J&K
S HP UTRKND SE PJB S HARY NW & CENTRAL UP (.) SCT LOW/MED CLOUDS OVER N HARY
REST UP DLH (.)

EAST:-

SCT LOW/MED CLOUDS WITH EMBDD ISOL WK TO MOD CONVTN OVER SKM ARUPR ADJ NE
ASSAM S ORS S CHTGH (.) SCT LOW/MED CLOUDS OVER N CHTGH N ORS REST NE STATES (.)

WEST:-

SCT LOW/MED CLOUDS WITH EMBDD WK TO MOD CONVTN OVER RAJ NW MP (.) SCT
LOW/MED CLOUDS OVER REST MP (.)

SOUTH:-

SCT LOW/MED CLOUDS WITH EMBDD MOD TO INT CONVTN OVER TN S KER ANDAMAN S
SIK & NICOBAR ILS (.) SCT LOW/MED CLOUDS TLNGN RYLSMA REST KRNTK N KER &
LKSDP ILS (.)

ARABIAN SEA:-

SCT LOW/MED CLOUDS WITH EMBDD ISOL MOD TO INT CONVTN OVER S ARSEA SOUTH OF
LAT 10.0N AND ISOL WK TO MOD CONVTN OVER N ADJ WC ARSEA (.)

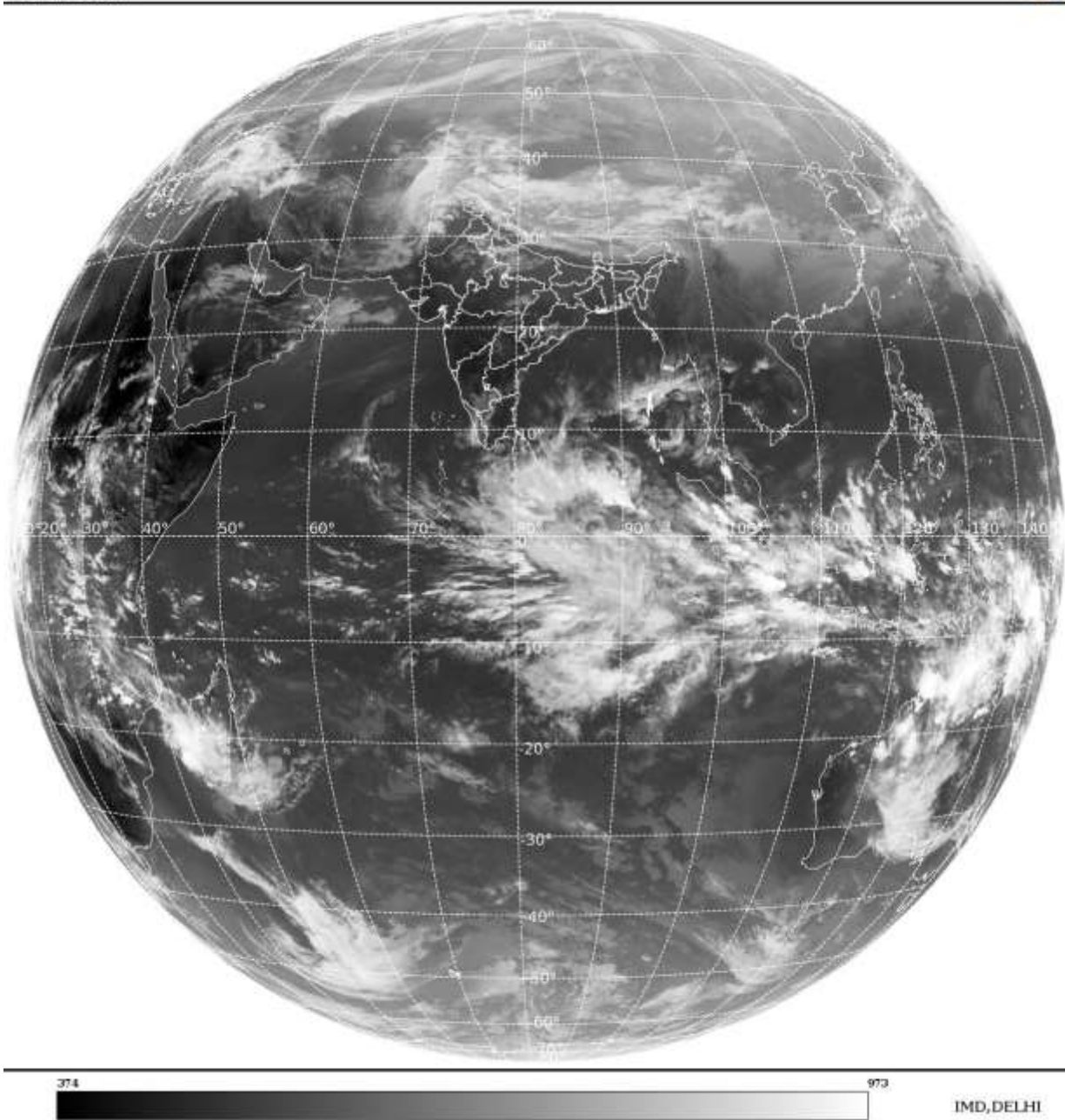
BAY OF BENGAL & ANDAMAN SEA:-

SCT LOW/MED CLOUDS WITH EMBDD INT TO V INT CONVTN OVER SOUTH & CENTRAL BAY
ADJ EQUATORIAL INDIAN OCEAN AND ANDAMAN SEA (MINIMUM CTT **MINUS 93 DEGREE**
CEL) (.)

CLOUDS DESCRIPTION OUTSIDE INDIA:-

SAT : INSAT-3D IMG
Thermal Infrared1 Count 10.8 um
LIB FULL DISK

06-03-2024/(1200 to 1226) GMT
06-03-2024/(1730 to 1756) IST



SCT LOW/MED CLOUDS WITH EMBDD MOD TO INT CONVTN OVER SRILANKA MALDIVES PAK NEPAL TIBET CHINA THAILAND SUMATRA ILS AND SEA STR OF MALACCA MALAYSIA BORNEO SOUTH CHINA SEA JAVA ILS & SEA CELEBES ILS & SEA MADAGASCAR MOZAMBIQUE CHANNEL AND OVER INDIAN OCEAN BET 5.0N TO LAT 18.0S LONG 60.0E TO 110.0E (.)

TOO 06/1830 HRS IST=

NNNN

LEGEND:-

REGION	NORTH	J&K HP PJB HARY DLH UP UTRKND
	EAST	BHR JHRKND CHTGH ORS WB SKM NORTH- EAST STATES
	WEST	RAJ MP GUJ MAHA GOA

	SOUTH	TLNGN AP KRNTK KER TN LKSDP ANDAMAN & NICOBAR ILS
CLOUD DISTRIBUTION	ISOL	ISOLATED (LESS THAN 25%)
	SCT	SCATTERED (25 TO 50%)
	BKN	BROKEN (51 TO 75%)
	SLD	SOLID (GREATER THAN 75%)
CLOUDS TOP TEMPERATURE	CTT	CLOUD TOP TEMPERATURE
CONVECTION	WK CONVTN	WEAK CONVECTION (CTT GREATER THAN -25°C)
	MOD CONVTN	MODERATE CONVECTION (CTT BETWEEN -25°C TO -40°C)
	INT CONVTN	INTENSE CONVECTION (CTT BETWEEN -41°C TO -70°C)
	V INT CONVTN	VERY INTENSE CONVECTION (CTT LESS THAN -70°C)
METEOROLOGICAL SUB- DIVISIONS, STATES & UNION TERRITORIES	ARUPR	ARUNACHAL PRADESH
	BHR	BIHAR
	CHTGH	CHHATTISGARH
	COTL AP	COASTAL ANDHRA PRADESH
	COTL KRNTK	COASTAL KARNATAKA
	COTL ORS	COASTAL ORISSA
	GUJ	GUJARAT
	GWB	GANGETIC WEST BENGAL
	HARY	HARYANA
	DLH	DELHI
	HP	HIMACHAL PRADESH
	J&K	JAMMU AND KASHMIR
	JHRKND	JHARKHAND
	KER	KERALA
	KKN	KONKAN
	LKSDP	LAKSHADWEEP
	M MAHA	MADHYA MAHARASHTRA
	MAHA	MAHARASHTRA
	MANI	MANIPUR
	MEGHA	MEGHALAYA
	MIZO	MIZORAM
	MP	MADHYA PRADESH
	MRTHWD	MARATHWADA
	NAGA	NAGALAND
	N COTL AP	NORTH COASTAL ANDHRA PRADESH
	NIK	NORTH INTERIOR KARNATAKA
	ORS	ORISSA
	PJB	PUNJAB
RAJ	RAJASTHAN	
RYLSM	RAYALASEEMA	
SAU & KUTCH	SAURASHTRA & KUTCH	
SHWB	SUB-HIMALAYAN WEST BENGAL	

	SIK	SOUTH INTERIOR KARNATAKA
	SKM	SIKKIM
	TLNGN	TELANGANA
	TN	TAMIL NADU
	TRP	TRIPURA
	UP	UTTAR PRADESH
	UTRKND	UTTARAKHAND
	VID	VIDHARBHA
	SHWB	SUB HIMALAYAN WEST BENGAL
	GWB	GANGETIC WEST BENGAL
	ARSEA	ARABIAN SEA
	ILS	ISLANDS
MISCELLANEOUS	ASSW	IN ASSOCIATION WITH
	ASSTD	ASSOCIATED
	LLC	LOW LEVEL CIRCULATION
	EMBDD	EMBEDDED
	N/HOOD	NEIGHBOURHOOD
	EXT	EXTREME