



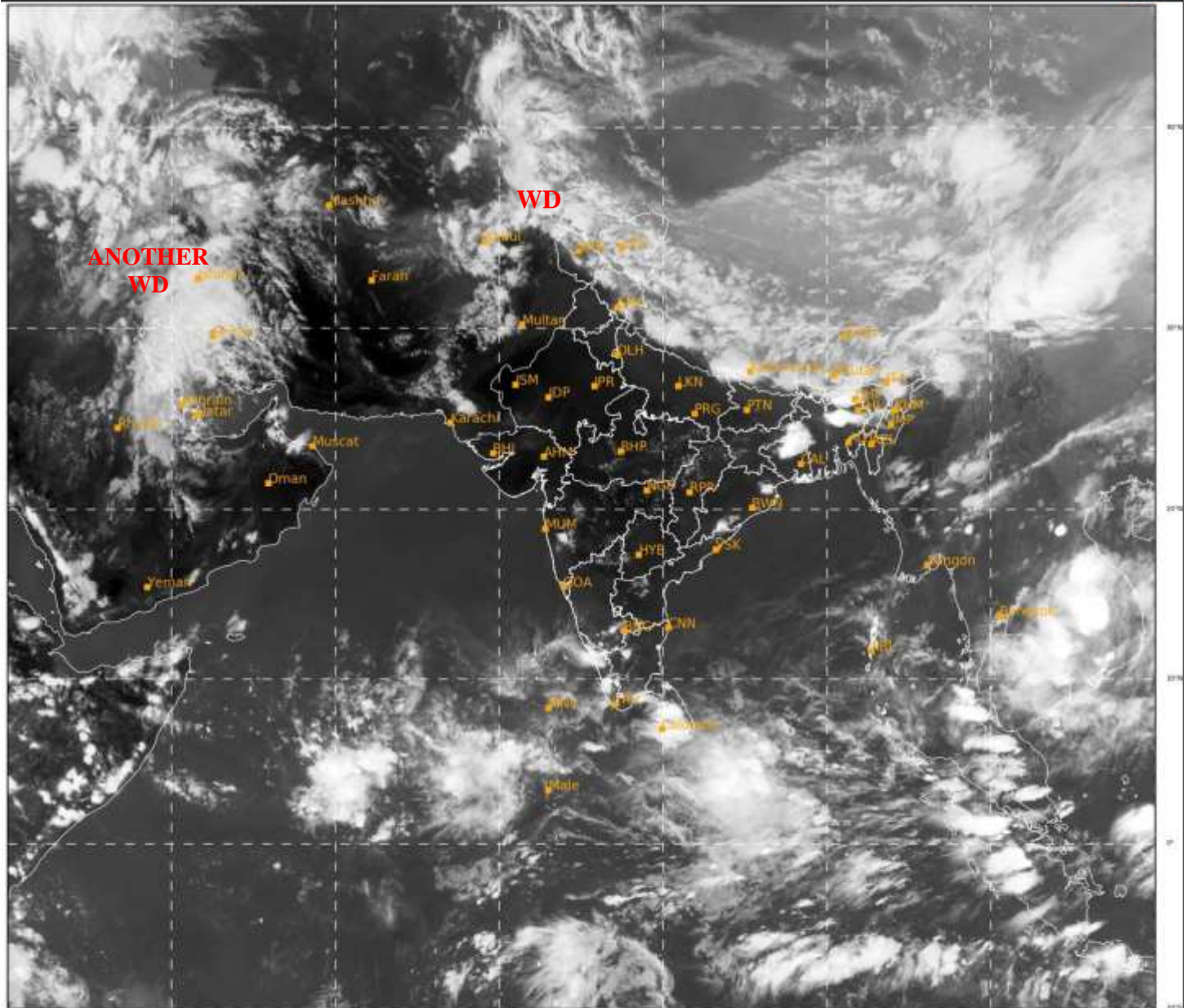
भारत मौसम विज्ञान विभाग
पृथ्वी विज्ञान मंत्रालय
India Meteorological Department
Ministry of Earth Sciences



**SATELLITE BULLETIN BASED ON SATELLITE
IMAGERIES AND PRODUCTS**
29.04.2022 TIME 1200 UTC

SAT : INSAT-3D IMG
IMG_TIR1 10.8 um
LIC Mercator

29-04-2022/(1200 to 1226) GMT
29-04-2022/(1730 to 1756) IST



333

940

IMD, DELHI

TCIN50 DEMS 291200

SATELLITE BULLETIN BASED ON INSAT-3D PIC OF 291200 UTC (.)

REGION COVERED BETWEEN LAT 50.0°N TO 30.0°S AND LONG 40.0°E TO 125.0°E (.)

SALIENT FEATURES:-

WESTERN DISTURBANCE (WD):-

SCT MULTILAYERED CLOUDS OVER AFGAN N PAK J&K LADAKH HP UTRKND TIBET ADJ CHINA AND N/HOOD IN ASSW **WD** OVER THE AREA (.)

SCT MULTILAYERED CLOUDS OVER PERSIAN GULF CASPIAN SEA IRAN AND N/HOOD IN ASSW **ANOTHER WD** OVER THE AREA (.)

THUNDERSTORM / CONVECTION ACTIVITY:-

THUNDERSTORM / CONVECTIVE ACTIVITIES OBSERVED OVER LADAKH N J&K HP UTRKND
GWB SKM ASSAM ARUPR MEGHA (.)

DUST:-

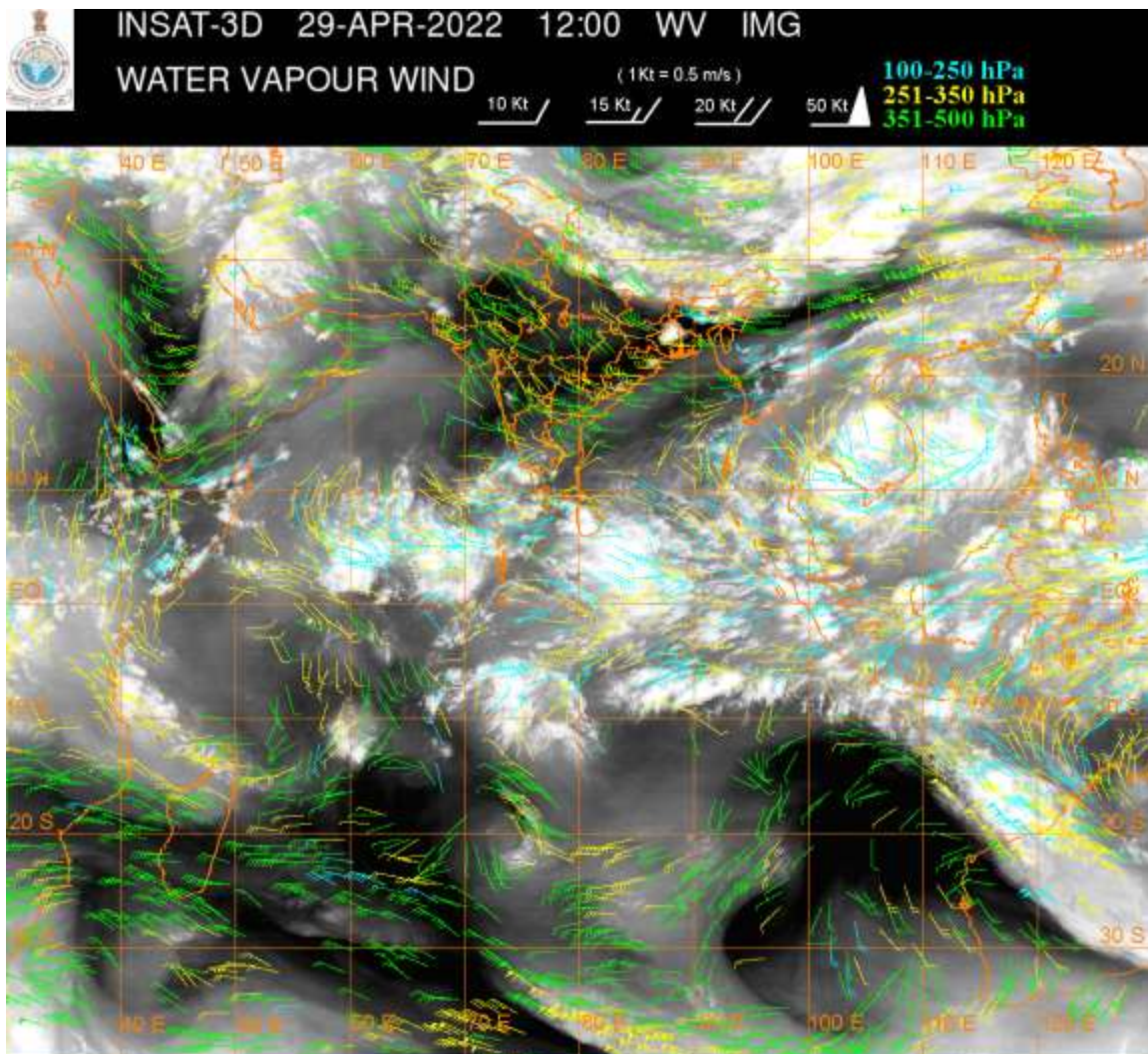
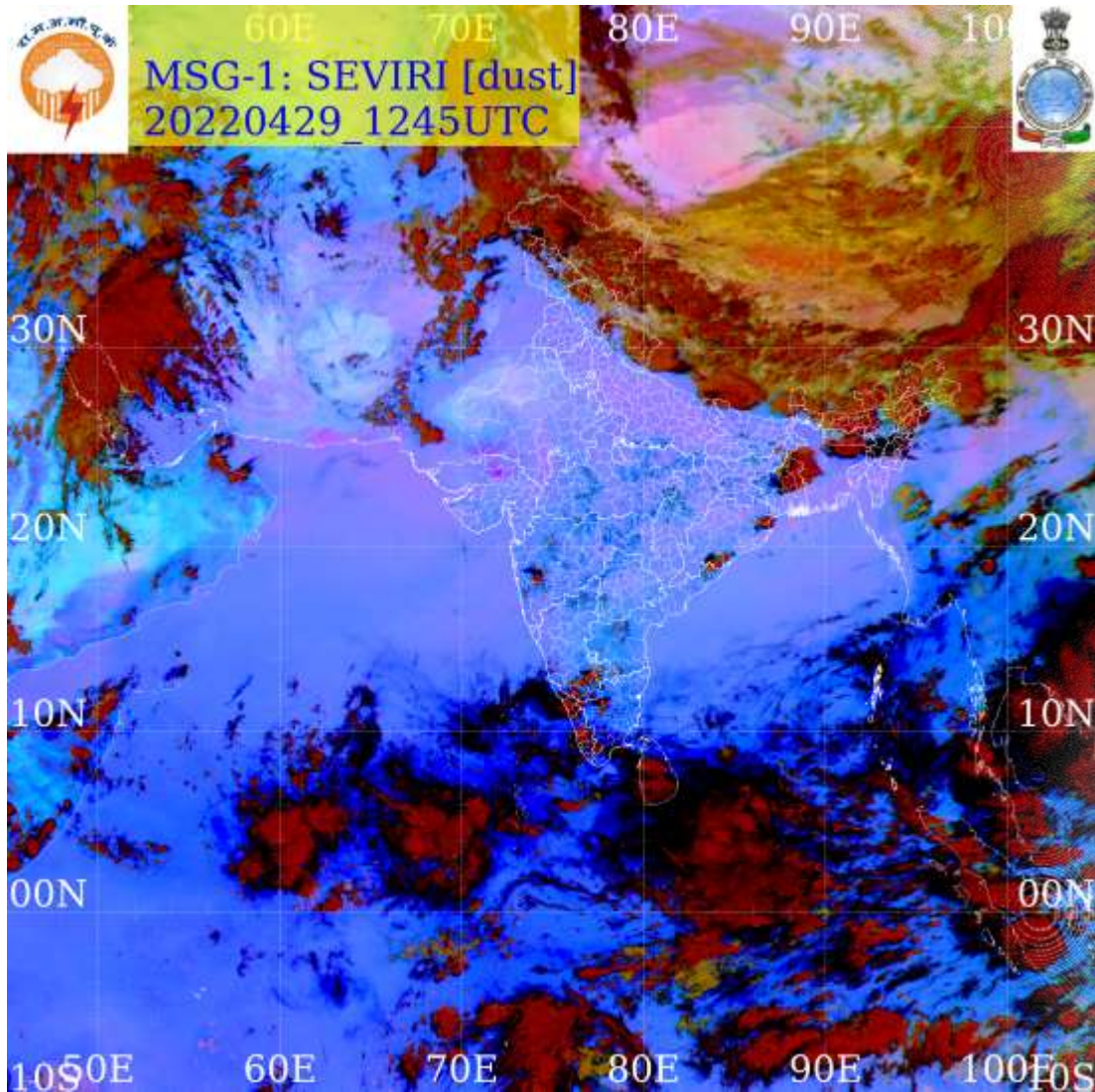
METOSAT-8 RGB PRODUCT INDICATE DUST AT 1245 UTC AT NC GUJ (.)

PRECIPITATION NOWCASTING:-

(BASED ON SCOPE NOWCASTING TOOL AT 1200 UTC AT A LEAD TIME OF 03 HRS (MM/HR) :-

RAINFALL UP TO **5-10 MM** OBSERVED OVER ARUPR MEGHA NE ASSAM S TN (.)

RAINFALL UP TO **0.5-5 MM** OBSERVED OVER NW LADAKH J&K KER & NICOBAR ILS (.)



CLOUDS DESCRIPTION WITHIN INDIA:-

NORTH:-

SCT LOW/MED CLOUDS WITH EMBDD MOD TO INT CONVTN OVER LADAKH N J&K WC HP E UTRKND AND WK TO MOD CONVTN OVER E HP REST UTRKND EXT NE UP (.) ISOL LOW/MED CLOUDS OVER SOUTH UP (.)

EAST:-

SCT LOW/MED CLOUDS WITH EMBDD INT TO V INT CONVTN OVER EXT NE JHRKND N GWB S MEGHA W ASSAM AND MOD TO INT CONVTN OVER EXT NW BHR E ORS N SHWB REST ASSAM REST MEGHA ARUPR (.) SCT LOW/MED CLOUDS WITH EMBDD WK TO MOD CONVTN OVER NAGA N MANI (.) ISOL TO SCT LOW/MED CLOUDS OVER S BHR REST JHRKND N CHTGH (.)

WEST:-

SCT LOW/MED CLOUDS WITH EMBDD ISOL INT TO V INT CONVTN OVER S KKN (.) SCT LOW/MED CLOUDS OVER MP REST MAHA (.)

SOUTH:-

SCT LOW/MED CLOUDS WITH EMBDD INT TO V INT CONVTN OVER KER SIK EXT SOUTH TN AND MOD TO INT CONVTN OVER NW TN N COTL AP (.) SCT LOW/MED CLOUDS WITH EMBDD WK TO MOD CONVTN OVER E RYLSM LKSDP ANDAMAN & NICOBAR ILS (.) SCT LOW/MED CLOUDS OVER NIK N TLNGN (.)

ARABIAN SEA:-

SCT LOW/MED CLOUDS WITH EMBDD MOD TO INT CONVTN OVER SOUTH ARSEA COMORIN AREA (.)

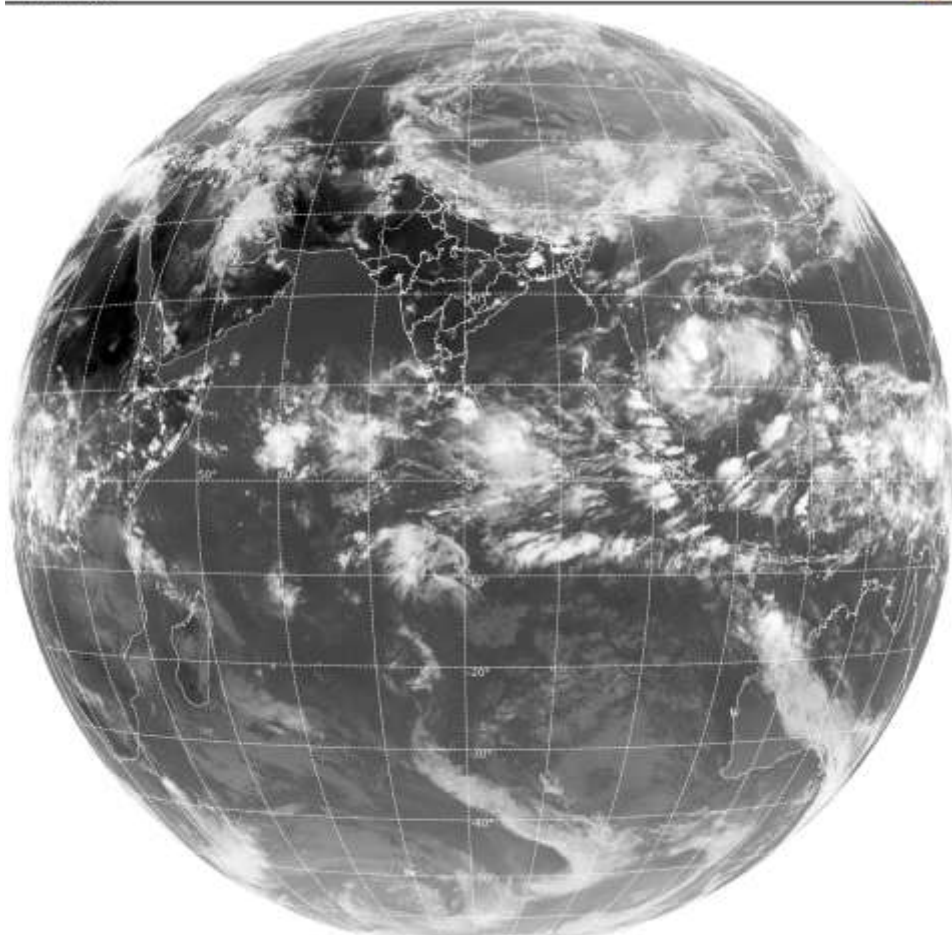
BAY OF BENGAL & ANDAMAN SEA:-

SCT LOW/MED CLOUDS WITH EMBDD MOD TO INT CONVTN OVER SOUTH BAY (.)SCT LOW/MED CLOUDS WITH EMBDD WK TO MOD CONVTN OVER ANDAMAN SEA ADJ EC BAY (.)

CLOUDS DESCRIPTION OUTSIDE INDIA:-

SAT : INSAT-3D IMG
Thermal Infrared1 Count 10.8 um
LIB FULL DISK

29-04-2022(1209 to 1226) GMT
29-04-2022(1730 to 1756) IST



299

973

IMD,DELHI

SCT LOW/MED CLOUDS WITH EMBDD MOD TO INT CONVTN OVER MALDIVES NEPAL BHUTAN TIBET CHINA YELLOW SEA E CHINA SEA S MYANMAR THAILAND GULF OF THAILAND CAMBODIA LAOS VIETNAM GULF OF TONKIN HAINAN SUMATRA STR OF MALACCA MALAYSIA BORNEO SOUTH CHINA SEA JAVA ILS & SEA CELEBES ILS & SEA PHILIPPINES SULU SEA EXT N MADAGASCAR AND OVER INDIAN OCEAN BET LAT 5.0N TO 30.0S LONG 51.0E TO 120.0E (.)

TOO 29/1850 HRS IST=

NNNN

LEGEND:-

REGION	NORTH	J&K HP PJB HARY DLH UP UTRKND
	EAST	BHR JHRKND CHTGH OR WB SKM NORTH- EAST STATES
	WEST	RAJ MP GUJ MAHA GOA
	SOUTH	TLNGN AP KRNTK KER TN LKSDP ANDAMAN & NICOBAR ILS

CLOUD DISTRIBUTION	ISOL	ISOLATED (LESS THAN 25%)
	SCT	SCATTERED (25 TO 50%)
	BKN	BROKEN (51 TO 75%)
	SLD	SOLID (GREATER THAN 75%)
CLOUDS TOP TEMPERATURE	CTT	CLOUD TOP TEMPERATURE
CONVECTION	WK CONVTN	WEAK CONVECTION (CTT GREATER THAN -25°C)
	MOD CONVTN	MODERATE CONVECTION (CTT BETWEEN -25°C TO -40°C)
	INT CONVTN	INTENSE CONVECTION (CTT BETWEEN -41°C TO -70°C)
	V INT CONVTN	VERY INTENSE CONVECTION (CTT LESS THAN -70°C)
METEOROLOGICAL SUB-DIVISIONS, STATES & UNION TERRITORIES	ARUPR	ARUNACHAL PRADESH
	BHR	BIHAR
	CHTGH	CHHATTISGARH
	COTL AP	COASTAL ANDHRA PRADESH
	COTL KRNTK	COASTAL KARNATAKA
	COTL ORS	COASTAL ORISSA
	GUJ	GUJARAT
	GWB	GANGETIC WEST BENGAL
	HARY	HARYANA
	DLH	DELHI
	HP	HIMACHAL PRADESH
	J&K	JAMMU AND KASHMIR

	JHRKND	JHARKHAND
	KER	KERALA
	KKN	KONKAN
	LKSDP	LAKSHADWEEP
	M MAHA	MADHYA MAHARASHTRA
	MAHA	MAHARASHTRA
	MANI	MANIPUR
	MEGHA	MEGHALAYA
	MIZO	MIZORAM
	MP	MADHYA PRADESH
	MRTHWD	MARATHWADA
	NAGA	NAGALAND
	N COTL AP	NORTH COASTAL ANDHRA PRADESH
	NIK	NORTH INTERIOR KARNATAKA
	ORS	ORISSA
	PJB	PUNJAB
	RAJ	RAJASTHAN
	RYLSM	RAYALASEEMA
	SAU & KUTCH	SAURASHTRA & KUTCH
	SHWB	SUB-HIMALAYAN WEST BENGAL
	SIK	SOUTH INTERIOR KARNATAKA
	SKM	SIKKIM
	TLNGN	TELANGANA
	TN	TAMIL NADU
	TRP	TRIPURA
	UP	UTTAR PRADESH
	UTRKN	UTTARAKHAND
	VID	VIDHARBHA
	SHWB	SUB HIMALAYAN WEST BENGAL
	GWB	GANGETIC WEST BENGAL
	ARSEA	ARABIAN SEA
	ILS	ISLANDS
MISCELLANEOUS	ASSW	IN ASSOCIATION WITH
	ASSTD	ASSOCIATED
	LLC	LOW LEVEL CIRCULATION
	EMBDD	EMBEDDED
	N/HOOD	NEIGHBOURHOOD
	EXT	EXTREME