

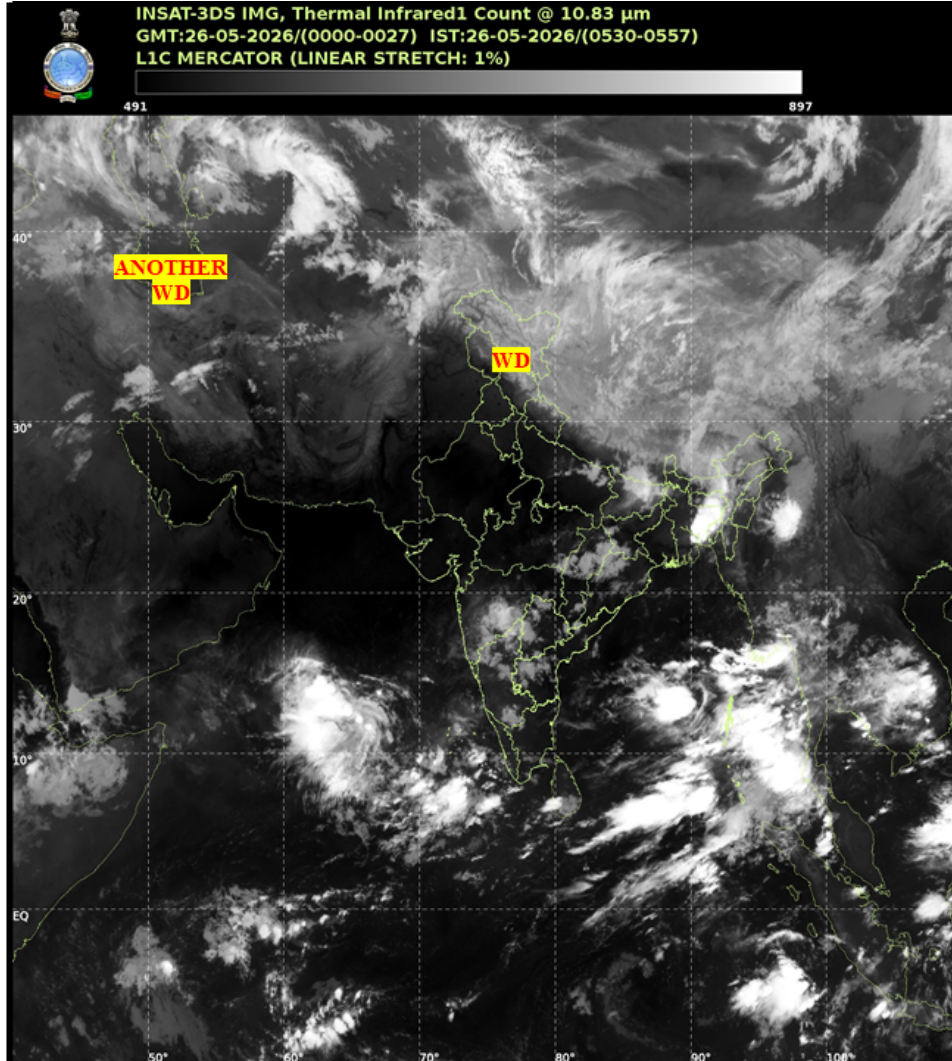


भारत मौसम विज्ञान विभाग  
पृथ्वी विज्ञान मंत्रालय  
India Meteorological Department  
Ministry of Earth Sciences



**SATELLITE BULLETIN BASED ON SATELLITE IMAGERIES AND PRODUCTS**

Date: 2026-05-26 Time: 00:00:00 UTC



TCIN50 DEMS 260000

SATELLITE BULLETIN BASED ON INSAT-3DS PIC OF 260000 UTC (.)

REGION COVERED BETWEEN LAT 50.0°N TO 35.0°S AND LONG 40.0°E TO 125.0°E (.)

**SALIENT FEATURES:**

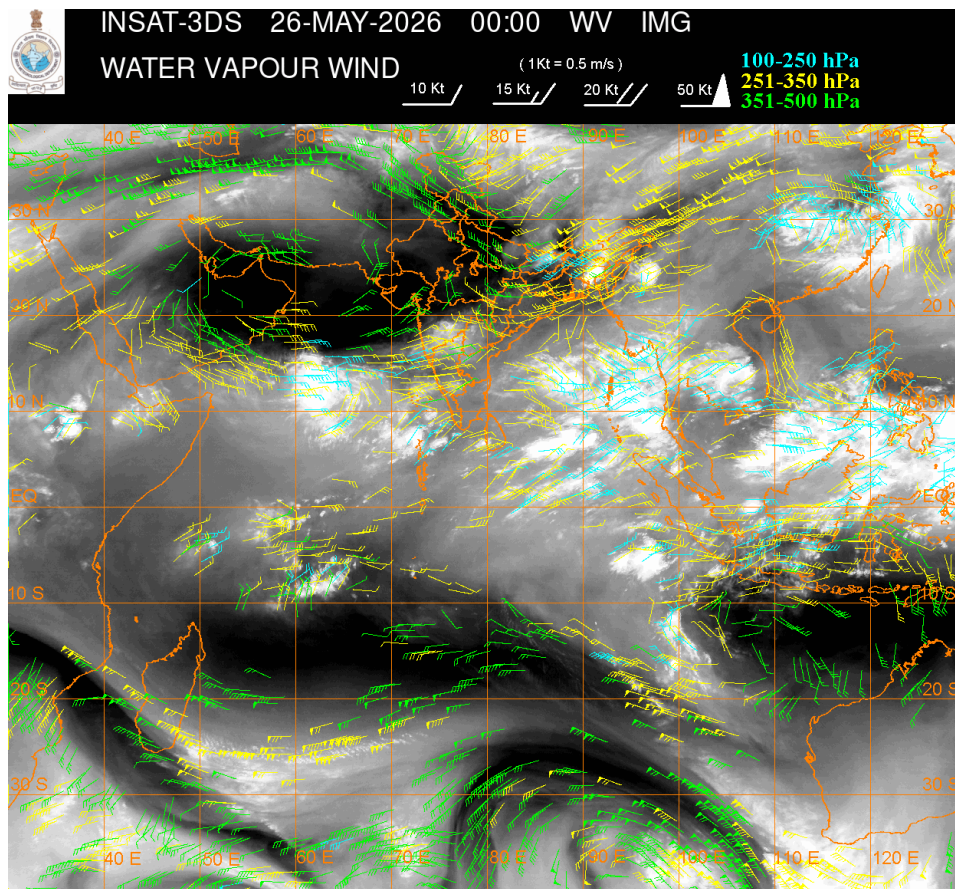
**WESTERN DISTURBANCE (WD):-**

SCT MULTILAYERED CLOUDS OVER EXT NORTH PAK J&K LADAKH HP UTRKND NEPAL TIBET ADJ CHINA IN ASSW WD OVER THE AREA (.)

SCT MULTILAYERED CLOUDS OVER IRAN AFGAN AND N/HOOD IN ASSW ANOTHER WD OVER THE AREA (.)

## CONVECTIVE / THUNDERSTORM ACTIVITY:-

MODERATE TO INTENSE CONVECTIVE / THUNDERSTORM ACTIVITY OVER LADAKH NE UP BHR W JHRKND CHTGH ORS NORTH-EAST STATES SOUTH MADHYA MAHA MRTHWD NIK SIK TLNGN RYLSM LKSDP ILS AREA ANDAMAN & NICOBAR ILS AREA (MINIMUM CTT MINUS 40-70 DEGREE CELSIUS) (.)



### CLOUD DESCRIPTION WITHIN INDIA:

#### NORTH:

SCT TO BKN LOW/MED CLOUDS WITH EMBDD MOD TO INT CONVTN OVER LADAKH N HP N UTRKND NE UP (.) SCT LOW/MED CLOUDS OVER J&K S HP S UTRKND HARY SE UP (.)

#### EAST:

SCT TO BKN LOW/MED CLOUDS WITH EMBDD MOD TO INT CONVTN OVER BHR W JHRKND CHTGH ORS NORTH-EAST STATES & BD (.) SCT LOW/MED CLOUDS WITH EMBDD ISOL WK TO MOD CONVTN OVER SKM SHWB (.) SCT LOW/MED CLOUDS OVER GWB (.)

#### WEST:

SCT TO BKN LOW/MED CLOUDS WITH EMBDD MOD TO INT CONVTN OVER SOUTH MADHYA MAHA MRTHWD (.) SCT LOW/MED CLOUDS WITH EMBDD ISOL WK TO MOD CONVTN OVER SE MP VID (.) ISOL TO SCT LOW/MED CLOUDS OVER REST MP KKN GOA (.)

#### SOUTH:

SCT TO BKN LOW/MED CLOUDS WITH EMBDD MOD TO INT CONVTN OVER KRNTK TLNGN RYLSM LKSDP ILS AREA ANDAMAN & NICOBAR ILS AREA (.) SCT LOW/MED CLOUDS OVER KER TN COTL AP (.)

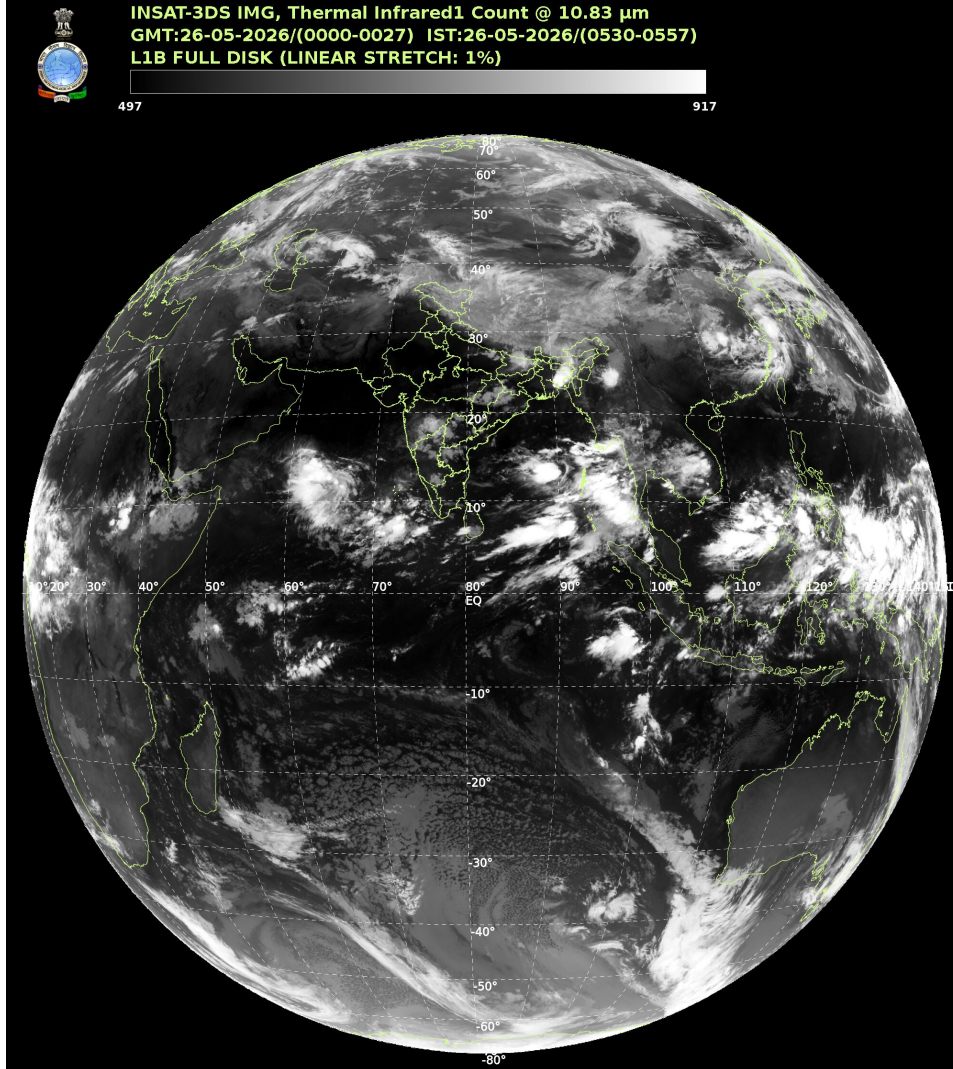
#### ARABIAN SEA:

SCT TO BKN LOW/MED CLOUDS WITH EMBDD INT TO V INT CONVTN OVER CENTRAL ADJ SOUTH ARSEA (.) SCT LOW/MED CLOUDS WITH EMBDD MOD TO INT CONVTN OVER LKSDP ILS AREA MALDIVES AND COMORIN AREA (.)

**BAY OF BENGAL & ANDAMAN SEA:**

SCT TO BKN LOW/MED CLOUDS WITH EMBDD INT TO V INT CONVTN OVER EC AND SE BAY ANDAMAN & NICOBAR SEA GULF OF MARTABAN AND TENASSERIM COAST (.) SCT LOW/MED CLOUDS WITH EMBDD MOD TO INT CONVTN OVER WC & SW BAY (.) SCT LOW/MED CLOUDS OVER NORTH BAY (.)

**CLOUD DESCRIPTION OUTSIDE INDIA:**



SCT LOW/MED CLOUDS WITH EMBDD MOD TO INT CONVTN OVER SRI LANKA MALDIVES AREA NEPAL BHUTAN TIBET CHINA YELLOW SEA EAST CHINA SEA TAIWAN MYANMAR THAILAND GULF OF THAILAND CAMBODIA LAOS VIETNAM SUMATRA STR OF MALACCA MALAYSIA BORNEO SOUTH CHINA SEA JAVA ILS & SEA CELEBES ILS & SEA PHILIPPINES SULU SEA AND OVER INDIAN OCEAN BET LAT 5.0N TO 35.0S LONG 50.0E TO 110.0E (.)

T00 26/0750 HRS IST

NNNN

**LEGEND**

| REGION |   |
|--------|---|
| NORTH  | J&K HP UTRKND PJB HARY DLH UP                 |
| EAST   | BHR JHRKND CHTGH ORS WB SKM NORTH-EAST STATES |

|   |  |
|---|--|
| <b>WEST</b>   | <b>RAJ MP GUJ MAHA GOA</b>                                   |
| <b>SOUTH</b>  | <b>TLNGN AP KRNTK KER TN LKSDP ANDAMAN &amp; NICOBAR ILS</b> |
| <b>CLOUD DISTRIBUTION</b>   |  |
| <b>ISOL</b>   | <b>ISOLATED (LESS THAN 25%)</b>                              |
| <b>SCT</b>  | <b>SCATTERED (25 TO 50%)</b>                                 |
| <b>BKN</b>  | <b>BROKEN (51 TO 75%)</b>                                    |
| <b>SLD</b>  | <b>SOLID (GREATER THAN 75%)</b>                              |
| <b>CLOUDS TOP TEMPERATURE</b>                                       |  |
| <b>CTT</b>  | <b>CLOUD TOP TEMPERATURE</b>                                 |
| <b>CONVECTION</b>   |  |
| <b>WK CONVTN</b>  | <b>WEAK CONVECTION (CTT GREATER THAN -25°C)</b>              |
| <b>MOD CONVTN</b>   | <b>MODERATE CONVECTION (CTT BETWEEN -25°C TO -40°C)</b>      |
| <b>INT CONVTN</b>   | <b>INTENSE CONVECTION (CTT BETWEEN -41°C TO -70°C)</b>       |
| <b>V INT CONVTN</b>   | <b>VERY INTENSE CONVECTION (CTT LESS THAN -70°C)</b>         |
| <b>METEOROLOGICAL SUB-DIVISIONS, STATES &amp; UNION TERRITORIES</b> |  |
| <b>J&amp;K</b>  | <b>JAMMU AND KASHMIR</b>                                     |
| <b>HP</b>   | <b>HIMACHAL PRADESH</b>                                      |
| <b>UTRKND</b>   | <b>UTTARAKHAND</b>   |
| <b>PJB</b>  | <b>PUNJAB</b>  |
| <b>HARY</b>   | <b>HARYANA</b>   |
| <b>DLH</b>  | <b>DELHI</b>   |
| <b>BHR</b>  | <b>BIHAR</b>   |
| <b>JHRKND</b>   | <b>JHARKHAND</b>   |
| <b>CHTGH</b>  | <b>CHHATTISGARH</b>  |
| <b>ORS</b>  | <b>ORISSA</b>  |
| <b>GWB</b>  | <b>GANGETIC WEST BENGAL</b>                                  |
| <b>SHWB</b>   | <b>SUB-HIMALAYAN WEST BENGAL</b>                             |
| <b>SKM</b>  | <b>SIKKIM</b>  |
| <b>ARUPR</b>  | <b>ARUNACHAL PRADESH</b>                                     |
| <b>ASSAM</b>  | <b>ASSAM</b>   |
| <b>MEGHA</b>  | <b>MEGHALAYA</b>   |
| <b>MANI</b>   | <b>MANIPUR</b>   |
| <b>MIZO</b>   | <b>MIZORAM</b>   |
| <b>TRP</b>  | <b>TRIPURA</b>   |

|                        |                                 |
|------------------------|---------------------------------|
| <b>RAJ</b>             | <b>RAJASTHAN</b>                |
| <b>MP</b>              | <b>MADHYA PRADESH</b>           |
| <b>GUJ</b>             | <b>GUJARAT</b>                  |
| <b>SAU &amp; KUTCH</b> | <b>SAURASHTRA &amp; KUTCH</b>   |
| <b>MAHA</b>            | <b>MAHARASHTRA</b>              |
| <b>M MAHA</b>          | <b>MADHYA MAHARASHTRA</b>       |
| <b>MRTHWD</b>          | <b>MARATHWADA</b>               |
| <b>VID</b>             | <b>VIDARBHA</b>                 |
| <b>KKN</b>             | <b>KONKAN</b>                   |
| <b>TLNGN</b>           | <b>TELANGANA</b>                |
| <b>RYLSM</b>           | <b>RAYALSEEMA</b>               |
| <b>COTL AP</b>         | <b>COASTAL ANDHRA PRADESH</b>   |
| <b>NIK</b>             | <b>NORTH INTERIOR KARNATAKA</b> |
| <b>SIK</b>             | <b>SOUTH INTERIOR KARNATAKA</b> |
| <b>COTL KRNTK</b>      | <b>COASTAL KARNATAKA</b>        |
| <b>KER</b>             | <b>KERALA</b>                   |
| <b>TN</b>              | <b>TAMILNADU</b>                |
| <b>LKSDP</b>           | <b>LAKSHADWEEP</b>              |
| <b>ILS</b>             | <b>ISLANDS</b>                  |
| <b>ARSEA</b>           | <b>ARABIAN SEA</b>              |
| <b>MISCELLANEOUS</b>   |                                 |
| <b>ASSW</b>            | <b>IN ASSOCIATION WITH</b>      |
| <b>ASSTD</b>           | <b>ASSOCIATED</b>               |
| <b>LLC</b>             | <b>LOW LEVEL CIRCULATION</b>    |
| <b>EMBDD</b>           | <b>EMBEDDED</b>                 |
| <b>N/HOOD</b>          | <b>NEIGHBOURHOOD</b>            |
| <b>EXT</b>             | <b>EXTREME</b>                  |