



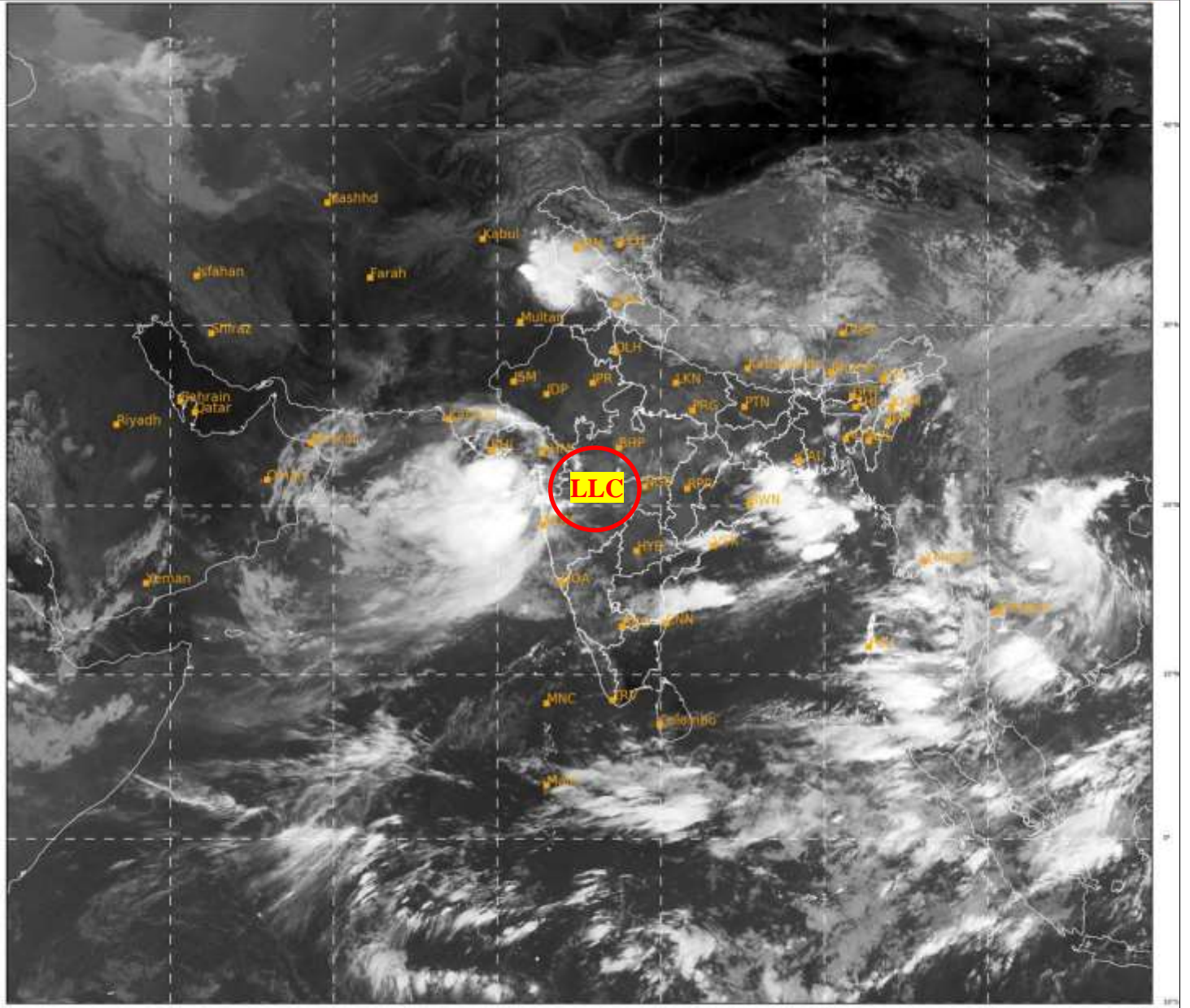
भारत मौसम विज्ञान विभाग
पृथ्वी विज्ञान मंत्रालय
India Meteorological Department
Ministry of Earth Sciences



SATELLITE BULLETIN BASED ON SATELLITE
IMAGERIES AND PRODUCTS
08.09.2021 TIME 0600 UTC

SAT : INSAT-3DR IMG
IMG_TIR1 10.8 um
LIC Mercator

08-09-2021/(0315 to 0342) GMT
08-09-2021/(0845 to 0912) IST



377

931

IMD, DELHI

TCIN50 DEMS 080600

SATELLITE BULLETIN BASED ON INSAT-3D PIC OF 080600 UTC (.)

REGION COVERED BETWEEN LAT 50.0°N TO 30.0°S AND LONG 40.0°E TO 125.0°E (.)

SALIENT FEATURES:-

LLC OVER SW MADHYA PRADESH ADJ NORTH M MAHA NW VIDHARBHA & N/HOOD:-

LLC OVER S MP ADJ N M MAHA NW VID & N/HOOD (.) ASSTD BKN LOW/MED CLOUDS WITH EMBDD INT TO V INT CONVTN OVER EXT SW GUJ (MINIMUM CTT MINUS 77 DEG C) AND SCT LOW/MED CLOUDS WITH EMBDD MOD TO INT CONVTN OVER REST W GUJ NORTH MADHYA MAHA ADJ N KKN SW MP (.)



INSAT-3D 08-SEP-2021 06:00 WV IMG

WATER VAPOUR WIND

(1Kt = 0.5 m/s)

10 Kt

15 Kt

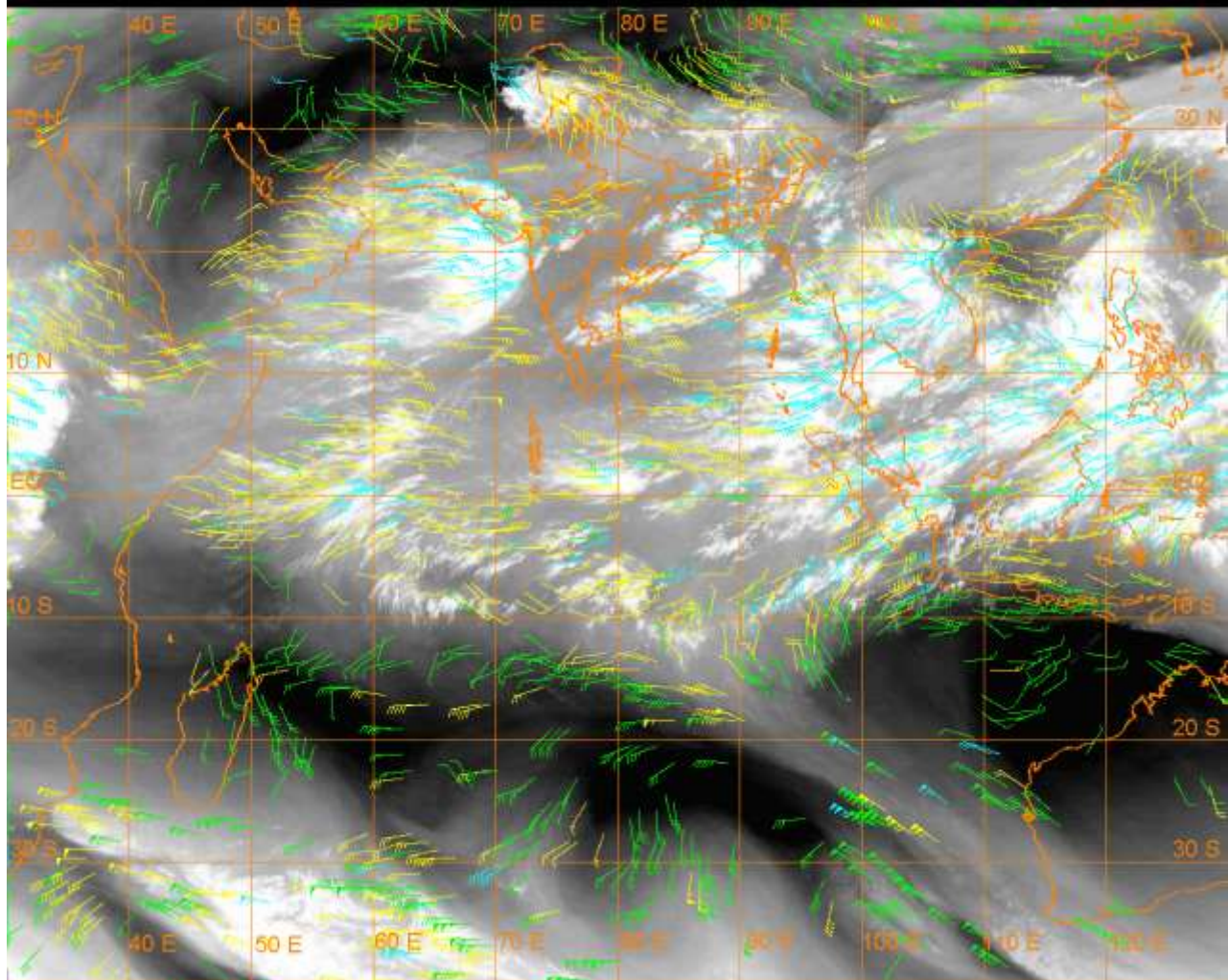
20 Kt

50 Kt

100-250 hPa

251-350 hPa

351-500 hPa



CLOUDS DESCRIPTION WITHIN INDIA:-

NORTH:-

SCT LOW/MED CLOUDS WITH EMBDD MOD TO INT CONVTN OVER S J&K ADJ NW HP EXT N PJB AND WK TO MOD CONVTN OVER N J&K LADAKH REST HP UTRKND EXT N HARY SW PJB EXT N UP (.) SCT LOW/MED CLOUDS OVER E PJB REST HARY DLH REST UP (.)

EAST:-

SCT LOW/MED CLOUDS WITH EMBDD MOD TO INT CONVTN OVER NC CHTGH C ADJ S JHRKND NE ORS EC & COTL GWB SKM MEGHA N ASSAM NAGA MANI N MIZO E TRP & BD (.) SCT LOW/MED CLOUDS WITH EMBDD ISOL WK TO MOD CONVTN OVER S ORS N SHWB ARUPR (.) SCT LOW/MED CLOUDS OVER REST JHRKND REST CHTGH NW ORS REST GWB S SHWB S ASSAM S MIZO S TRP (.)

WEST:-

BKN LOW/MED CLOUDS WITH EMBDD INT TO V INT CONVTN OVER EXT SW GUJ (MINIMUM CTT MINUS 77 DEG C) (.) SCT LOW/MED CLOUDS WITH EMBDD MOD TO INT CONVTN OVER SW MP REST W GUJ NORTH MADHYA MAHA ADJ N KKN NW VID AND ISOL WK CONVTN OVER SE GUJ (.) SCT LOW/MED CLOUDS OVER E RAJ REST MP NE GUJ REST MAHA & GOA (.)

SOUTH:-

SCT LOW/MED CLOUDS WITH EMBDD MOD TO INT CONVTN OVER N COTL AP EXT N TN EXT PART SOF SIK (.) SCT LOW/MED CLOUDS WITH EMBDD ISOL WK TO MOD CONVTN OVER REST SIK S RYLSM SE TLNGN N KER ANDAMAN & NICOBAR ILS (.) SCT LOW/MED CLOUDS OVER REST KRNTK REST TLNGN N RYLSM S KER W TN LKSDP ILS (.)

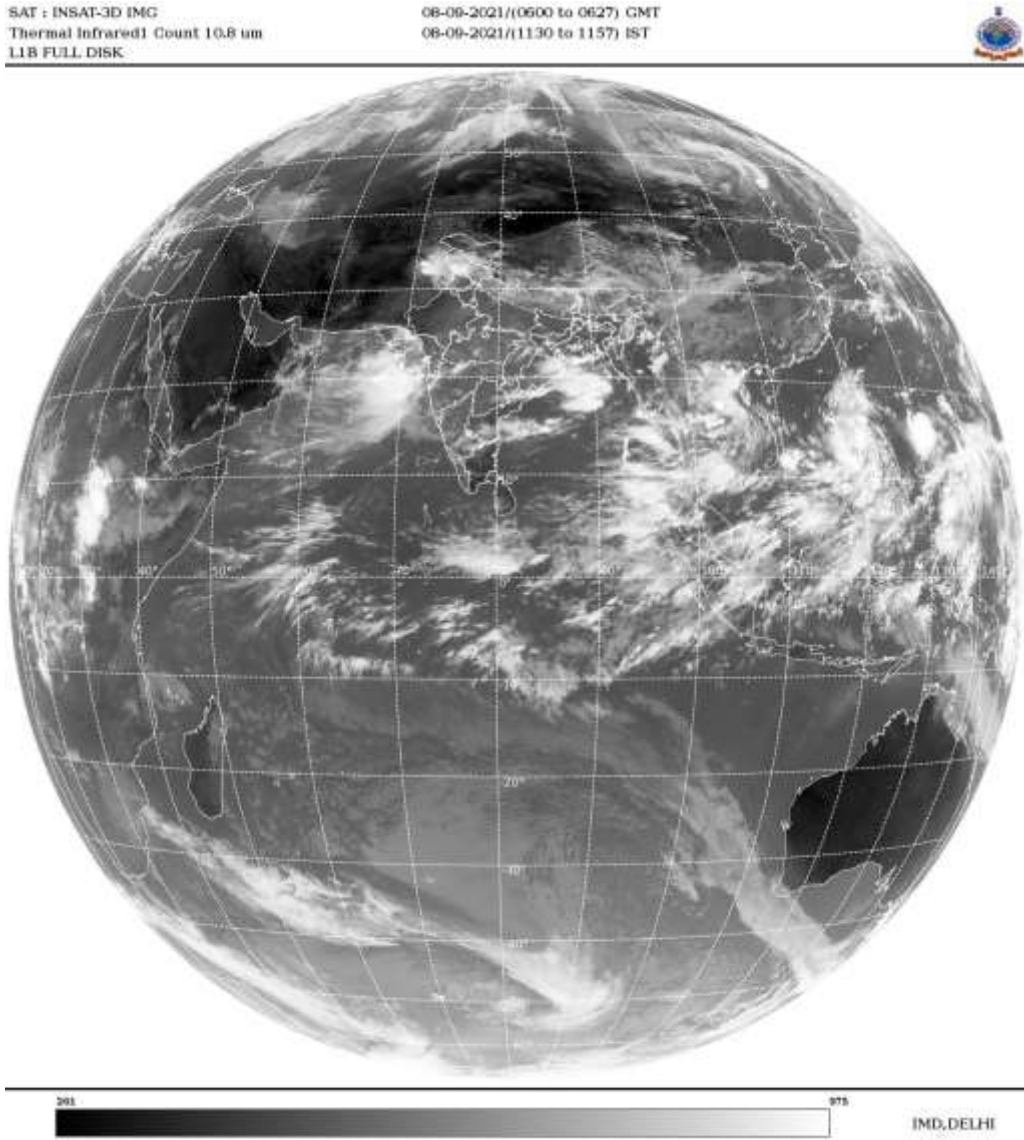
ARABIAN SEA:-

BKN LOW/MED CLOUDS WITH EMBDD INT TO V INT CONVTN OVER NE ARSEA OFF GUJ COAST (.) SCT LOW/MED CLOUDS WITH EMBDD MOD TO INT CONVTN OVER GULF OF KUTCH GULF OF CAMBAY EC ARSEA AND WK TO MOD CONVTN OVER WC ARSEA (.)

BAY OF BENGAL & ANDAMAN SEA:-

SCT LOW/MED CLOUDS WITH EMBDD INT TO V INT CONVTN OVER NORTH ADJ CENTRAL BAY S ANDAMAN SEA AND MOD TO INT CONVTN OVER SE BAY N ANDAMAN SEA(.)

CLOUDS DESCRIPTION OUTSIDE INDIA:-



SCT LOW/MED CLOUDS WITH EMBDD MOD TO INT CONVTN OVER MALDIVES PAK NEPAL TIBET CHINA E CHINA SEA MYANMAR THAILAND GULF OF THAILAND CAMBODIA LAOS VIETNAM GULF OF TONKIN SUMATRA STR OF MALACCA MALAY PENINSULA BORNEO S CHINA SEA JAVA SEA CELEBES ILS & SEA PHILIPPINES SULU SEA AND OVER INDIAN OCEAN BET LAT 5.0N TO 13.0S LONG 48.0E TO 102.0E (.)

TOO 08/1235EF=

NNNN

LEGEND:-

REGION	NORTH	J&K HP PJB HARY DLH UP UTRKND
	EAST	BHR JHRKND CHTGH ORS WB SKMNORTH- EAST STATES
	WEST	RAJ MP GUJ MAHA GOA

	SOUTH	TLNGN AP KRNTK KER TN LKSDP ANDAMAN & NICOBAR ILS
--	--------------	--

CLOUD DISTRIBUTION	ISOL	ISOLATED (LESS THAN 25%)	
	SCT	SCATTERED (25 TO 50%)	
	BKN	BROKEN (51 TO 75%)	
	SLD	SOLID (GREATER THAN 75%)	
CLOUDS TOP TEMPERATURE	CTT	CLOUD TOP TEMPERATURE	
CONVECTION	WK CONVTN	WEAK CONVECTION (CTT GREATER THAN -25°C)	
	MOD CONVTN	MODERATE CONVECTION (CTT BETWEEN -25°C TO -40°C)	
	INT CONVTN	INTENSE CONVECTION (CTT BETWEEN -41°C TO -70°C)	
	V INT CONVTN	VERY INTENSE CONVECTION (CTT LESS THAN -70°C)	
METEOROLOGICAL SUB-DIVISIONS, STATES & UNION TERRITORIES	ARUPR	ARUNACHAL PRADESH	
	BHR	BIHAR	
	CHTGH	CHHATTISGARH	
	COTL AP	COASTAL ANDHRA PRADESH	
	COTL KRNTK	COASTAL KARNATAKA	
	COTL ORS	COASTAL ORISSA	
	GUJ	GUJARAT	
	GWB	GANGETIC WEST BENGAL	
	HARY	HARYANA	
	DLH	DELHI	
	HP	HIMACHAL PRADESH	
	J&K	JAMMU AND KASHMIR	
	JHRKND	JHARKHAND	
	KER	KERALA	
	KKN	KONKAN	
	LKSDP	LAKSHADWEEP	
	M MAHA	MADHYA MAHARASHTRA	
	MAHA	MAHARASHTRA	
	MANI	MANIPUR	
	MEGHA	MEGHALAYA	
	MIZO	MIZORAM	
	MP	MADHYA PRADESH	
		MRTHWD	MARATHWADA
		NAGA	NAGALAND
N COTL AP		NORTH COASTAL ANDHRA PRADESH	
NIK		NORTH INTERIOR KARNATAKA	
ORS		ORISSA	
PJB		PUNJAB	
RAJ		RAJASTHAN	
RYLSM		RAYALASEEMA	
SAU & KUTCH		SAURASHTRA & KUTCH	

	SHWB	SUB-HIMALAYAN WEST BENGAL
	SIK	SOUTH INTERIOR KARNATAKA
	SKM	SIKKIM
	TLNGN	TELANGANA
	TN	TAMIL NADU
	TRP	TRIPURA
	UP	UTTAR PRADESH
	UTRKND	UTTARAKHAND
	VID	VIDHARBHA
	SHWB	SUB HIMALAYAN WEST BENGAL
	GWB	GANGETIC WEST BENGAL
	ARSEA	ARABIAN SEA
	ILS	ISLANDS
MISCELLANEOUS	ASSW	IN ASSOCIATION WITH
	ASSTD	ASSOCIATED
	LLC	LOW LEVEL CIRCULATION
	EMBDD	EMBEDDED
	N/HOOD	NEIGHBOURHOOD
	EXT	EXTREME