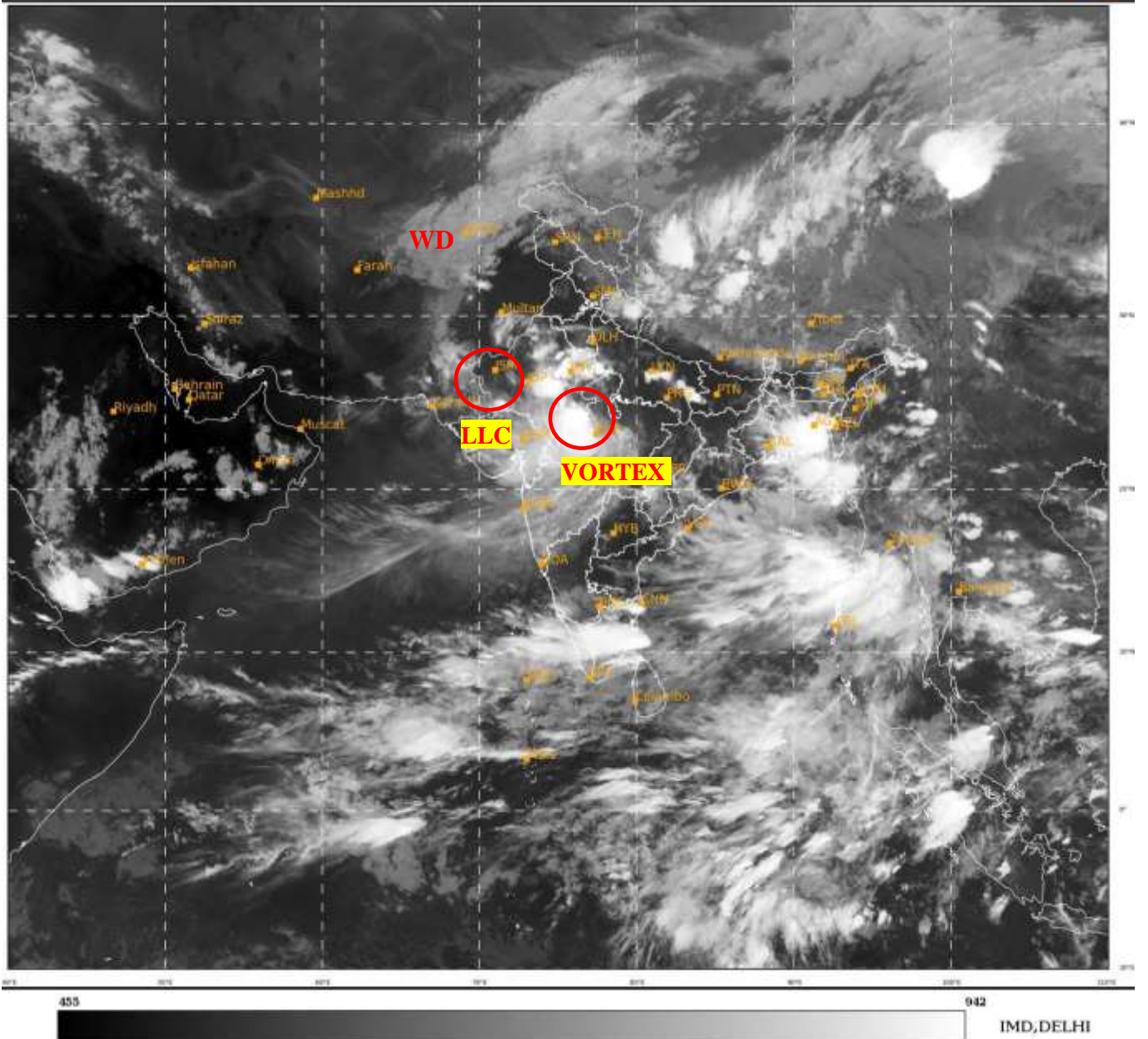




**SATELLITE BULLETIN BASED ON SATELLITE
IMAGERIES AND PRODUCTS**
22.08.2022 TIME 1500 UTC

SAT : INSAT-3D IMG
IMG TIR1 10.8 um
LIC Mercator

22-08-2022/(1500 to 1526) GMT
22-08-2022/(2030 to 2056) IST



TCIN50 DEMS 221500

SATELLITE BULLETIN BASED ON INSAT-3D PIC OF 221500 UTC (.)

REGION COVERED BETWEEN LAT 50.0°N TO 30.0°S AND LONG 40.0°E TO 125.0°E (.)

SALIENT FEATURES:-

VORTEX OVER NORTH-WEST MADHYA PRADESH ADJ EAST RAJASTHAN:-

VORTEX OVER NW MP ADJ E RAJ (.) **CENTER NOT DEFINED IN SATELLITE IMAGERY** (.)
ASSTD SCT TO BKN LOW/MED CLOUDS WITH EMBDD INT TO V INT CONVTN OVER W MP E
RAJ (MINIMUM CTT MINUS 93 DEG C) (.)

LLC OVER SW RAJ ADJ SE PAK:-

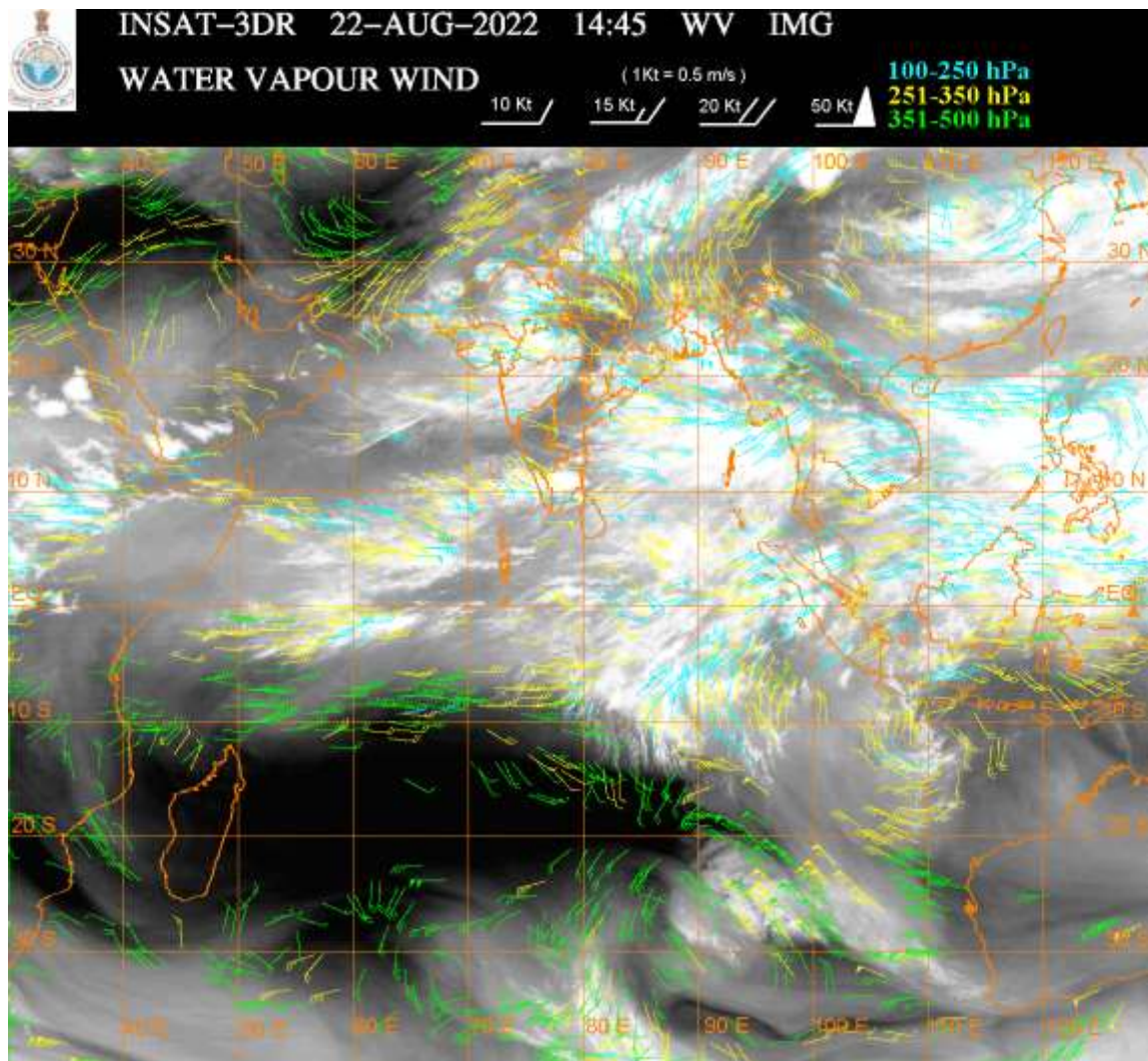
LLC OVER SW RAJ ADJ SE PAK (.) ASSTD SCT LOW/MED CLOUDS WITH EMBDD MOD TO INT
CONVTN OVER S PAK SW RAJ (.)

WESTERN DISTURBANCE:-

SCT MULTILAYERED CLOUDS OVER E AFGAN N PAK J&K LADAKH AND N/HOOD IN ASSW
WD OVER THE AREA (.)

INTENSE CONVECTIVE CLOUDS:-

INTENSE CONVECTIVE CLOUDS OBSERVED OVER UTRKND SE PJB WC & E UP SW BHR E ARUPR N MIZO TRP RAJ W MP KER TN LKSDP ILS ANDAMAN ILS (.)



CLOUDS DESCRIPTION WITHIN INDIA:-

NORTH:-

SCT TO BKN LOW/MED CLOUDS WITH EMBDD INT TO V INT CONVTN OVER SE PJB WC & E UP (MINIMUM CTT MINUS 93 DEG C) (.) SCT LOW/MED CLOUDS WITH EMBDD MOD TO INT CONVTN OVER W HP UTRKND HARY (.) SCT LOW/MED CLOUDS WITH EMBDD ISOL WK TO MOD CONVTN OVER N J&K LADAKH E HP NW PJB REST W UP (.) SCT LOW/MED CLOUDS OVER S J&K REST PJB DLH (.)

EAST:-

SCT TO BKN LOW/MED CLOUDS WITH EMBDD INT TO V INT CONVTN OVER SW BHR (MINIMUM CTT MINUS 80 DEG C) SE ARUPR N MIZO TRP & S BD (MINIMUM CTT MINUS 93 DEG C) (.) SCT LOW/MED CLOUDS WITH EMBDD MOD TO INT CONVTN OVER S CHTGH ORS GWB SHWB SKM REST ARUPR S ASSAM NAGA & N BD (.) SCT LOW/MED CLOUDS WITH EMBDD WK TO MOD CONVTN OVER E BHR JHRKND N CHTGH MEGHA REST ASSAM MANI S MIZO (.) SCT LOW/MED CLOUDS OVER NW BHR (.)

WEST:-

SCT TO BKN LOW/MED CLOUDS WITH EMBDD INT TO V INT CONVTN OVER E RAJ W MP (MINIMUM CTT MINUS 93 DEG C) (.) SCT LOW/MED CLOUDS WITH EMBDD MOD TO INT CONVTN OVER W RAJ E MP GUJ MAHA (.) SCT LOW/MED CLOUDS WITH EMBDD ISOL WK CONVTN OVER GOA (.)

SOUTH:-

SCT TO BKN LOW/MED CLOUDS WITH EMBDD INT TO V INT CONVTN OVER KER LKSDP ILS (MINIMUM CTT MINUS 75 DEG C) TN N ANDAMAN ILS (MINIMUM CTT MINUS 93 DEG C) (.) SCT LOW/MED CLOUDS WITH EMBDD MOD TO INT CONVTN OVER S COTL KRNTK S SIK S RYLSM N COTL AP (.) SCT LOW/MED CLOUDS WITH EMBDD WK TO MOD CONVTN OVER REST KRNTK TLNGN N RYLSM S COTL AP REST ANDAMAN & NICOBAR ILS (.) SCT LOW/MED CLOUDS OVER REST TLNGN RYLSM REST COTL AP (.)

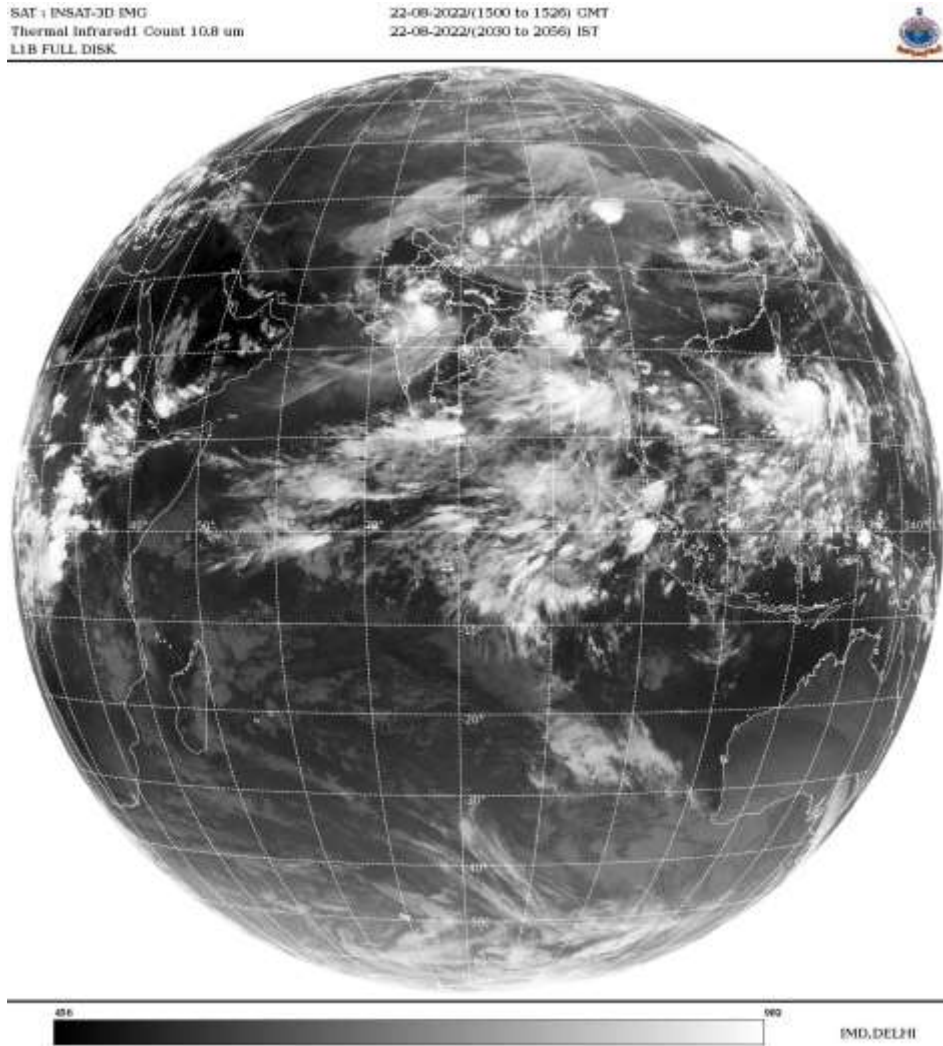
ARABIAN SEA:-

SCT TO BKN LOW/MED CLOUDS WITH EMBDD INT TO V INT CONVTN OVER SE ARSEA LKSDP ILS AREA (.) SCT LOW/MED CLOUDS WITH EMBDD MOD TO INT CONVTN OVER GULF OF CAMBAY EC & SW ARSEA (.) SCT LOW/MED CLOUDS WITH EMBDD WK TO MOD CONVTN OVER REST ARSEA GULF OF KUTCH AND COMORIN AREA (.)

BAY OF BENGAL & ANDAMAN SEA:-

SCT TO BKN LOW/MED CLOUDS WITH EMBDD INT TO V INT CONVTN OVER NE BAY CENTRAL & SOUTH BAY N ANDAMAN SEA AND ARAKAN COAST (.) SCT LOW/MED CLOUDS WITH EMBDD MOD TO INT CONVTN OVER NW BAY S ANDAMAN SEA GULF OF MARTABAN AND TENASSERIM COAST (.)

CLOUDS DESCRIPTION OUTSIDE INDIA:-



SCT LOW/MED CLOUDS WITH EMBDD MOD TO INT CONVTN OVER N MALDIVES PAK TIBET CHINA MYANMAR THAILAND COMBODIA LAOS S VIETNAM GULF OF THIALAND SUMATRA STR OF MALACCA MALAYSIA BORNEO SOUTH CHINA SEA JAVA ILS & SEA PHILIPPINES SULU SEA HAINAN YELLOW SEA AND OVER INDIAN OCEAN BET LAT 5.0N TO 13.0S LONG 50.0E TO 112.0E (.)

TOO 22/2150 HRS IST=

NNNN

LEGEND:-

REGION	NORTH	J&K HP PJB HARY DLH UP UTRKND
	EAST	BHR JHRKND CHTGH OR WB SKM NORTH- EAST STATES
	WEST	RAJ MP GUJ MAHA GOA
	SOUTH	TLNGN AP KRNTK KER TN LKSDP ANDAMAN & NICOBAR ILS

CLOUD DISTRIBUTION	ISOL	ISOLATED (LESS THAN 25%)
	SCT	SCATTERED (25 TO 50%)
	BKN	BROKEN (51 TO 75%)
	SLD	SOLID (GREATER THAN 75%)
CLOUDS TOP TEMPERATURE	CTT	CLOUD TOP TEMPERATURE
CONVECTION	WK CONVTN	WEAK CONVECTION (CTT GREATER THAN -25°C)
	MOD CONVTN	MODERATE CONVECTION (CTT BETWEEN -25°C TO -40°C)
	INT CONVTN	INTENSE CONVECTION (CTT BETWEEN -41°C TO -70°C)
	V INT CONVTN	VERY INTENSE CONVECTION (CTT LESS THAN -70°C)
METEOROLOGICAL SUB-DIVISIONS, STATES & UNION TERRITORIES	ARUPR	ARUNACHAL PRADESH
	BHR	BIHAR
	CHTGH	CHHATTISGARH
	COTL AP	COASTAL ANDHRA PRADESH
	COTL KRNTK	COASTAL KARNATAKA
	COTL ORS	COASTAL ORISSA
	GUJ	GUJARAT
	GWB	GANGETIC WEST BENGAL
	HARY	HARYANA
	DLH	DELHI
	HP	HIMACHAL PRADESH
	J&K	JAMMU AND KASHMIR
	JHRKND	JHARKHAND
	KER	KERALA
	KKN	KONKAN
	LKSDP	LAKSHADWEEP
	M MAHA	MADHYA MAHARASHTRA
	MAHA	MAHARASHTRA
	MANI	MANIPUR
	MEGHA	MEGHALAYA
	MIZO	MIZORAM
	MP	MADHYA PRADESH
	MRTHWD	MARATHWADA
	NAGA	NAGALAND
	N COTL AP	NORTH COASTAL ANDHRA PRADESH

	NIK	NORTH INTERIOR KARNATAKA
	ORS	ORISSA
	PJB	PUNJAB
	RAJ	RAJASTHAN
	RYLSM	RAYALASEEMA
	SAU & KUTCH	SAURASHTRA & KUTCH
	SHWB	SUB-HIMALAYAN WEST BENGAL
	SIK	SOUTH INTERIOR KARNATAKA
	SKM	SIKKIM
	TLNGN	TELANGANA
	TN	TAMIL NADU
	TRP	TRIPURA
	UP	UTTAR PRADESH
	UTRKN D	UTTARAKHAND
	VID	VIDHARBHA
	SHWB	SUB HIMALAYAN WEST BENGAL
	GWB	GANGETIC WEST BENGAL
	ARSEA	ARABIAN SEA
	ILS	ISLANDS
MISCELLANEOUS	ASSW	IN ASSOCIATION WITH
	ASSTD	ASSOCIATED
	LLC	LOW LEVEL CIRCULATION
	EMBDD	EMBEDDED
	N/HOOD	NEIGHBOURHOOD
	EXT	EXTREME