



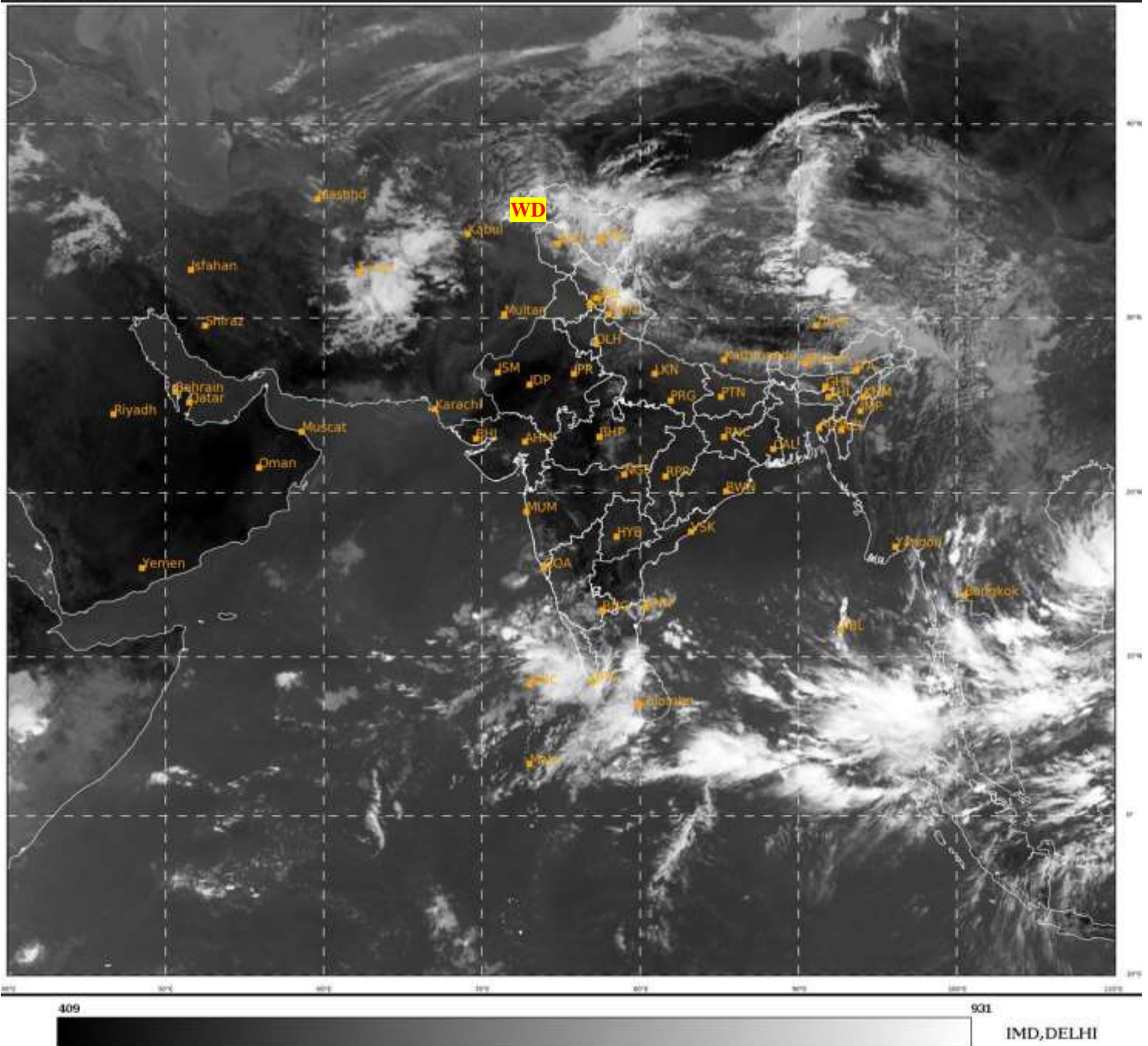
भारत मौसम विज्ञान विभाग
पृथ्वी विज्ञान मंत्रालय
India Meteorological Department
Ministry of Earth Sciences



**SATELLITE BULLETIN BASED ON SATELLITE
IMAGERIES AND PRODUCTS**
15.10.2023 TIME 0600 UTC

SAT : INSAT-3D IMG
IMG_TIR1 10.8 um
LIC Mercator

15-10-2023/(0600 to 0627) GMT
15-10-2023/(1130 to 1157) IST



TCIN50 DEMS 150600

SATELLITE BULLETIN BASED ON INSAT-3D PIC OF 150600 UTC (.)

REGION COVERED BETWEEN LAT 50.0°N TO 35.0°S AND LONG 40.0°E TO 125.0°E (.)

SALIENT FEATURES:-

WESTERN DISTURBANCE (WD):-

SCT TO BKN MULTILAYERED CLOUDS WITH EMBDD MOD TO INT CONVTN OVER N PAK LADAKH J&K HP N UTRKND AND N/HOOD IN ASSW **WD** OVER THE AREA (.)

CONVECTIVE / THUNDERSTORM ACTIVITY:-

MODERATE TO INTENSE CONVECTIVE / THUNDERSTORM ACTIVITY OBSERVED OVER E LAKADH N UTRKND S TN LKSDP ILS NICOBAR ILS (.)



INSAT-3D 15-OCT-2023 06:00 WV IMG

WATER VAPOUR WIND

(1Kt = 0.5 m/s)

10 Kt

15 Kt

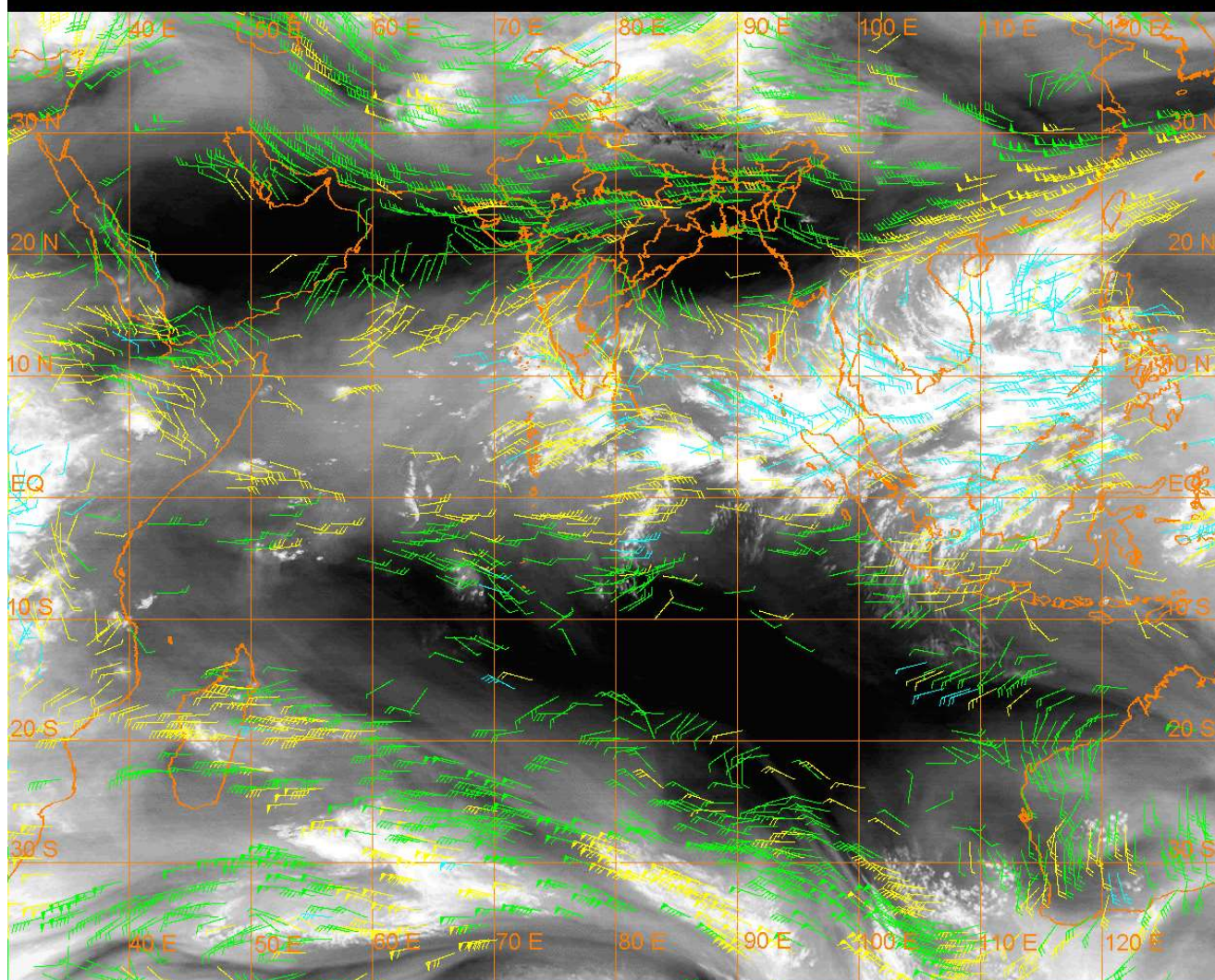
20 Kt

50 Kt

100-250 hPa

251-350 hPa

351-500 hPa



CLOUDS DESCRIPTION WITHIN INDIA:-

NORTH:-

SCT TO BKN LOW/MED CLOUDS WITH EMBDD MOD TO INT CONVTN OVER LADAKH NW UTRKND (.) SCT LOW/MED CLOUDS WITH EMBDD WK TO MOD CONVTN OVER J&K N & E HP (.) SCT LOW/MED CLOUDS OVER S UTRKND E HARY W UP (.)

EAST:-

SCT LOW/MED CLOUDS WITH EMBDD WK CONVTN OVER SKM E ASSAM ARUPR (.) SCT LOW/MED CLOUDS OVER N BHR S CHTGH ORS N SHWB REST NE STATES (.)

WEST:-

SCT LOW/MED CLOUDS OVER E RAJ MP S GUJ MAHA & GOA (.)

SOUTH:-

SCT LOW/MED CLOUDS WITH EMBDD MOD TO INT CONVTN OVER S TN LKSDP ILS NICOBAR ILS (.) SCT LOW/MED CLOUDS WITH EMBDD WK TO MOD CONVTN OVER SIK KER REST TN ANDAMAN ILS (.) SCT LOW/MED CLOUDS OVER REST KRNTK RYLSM S COTL AP (.)

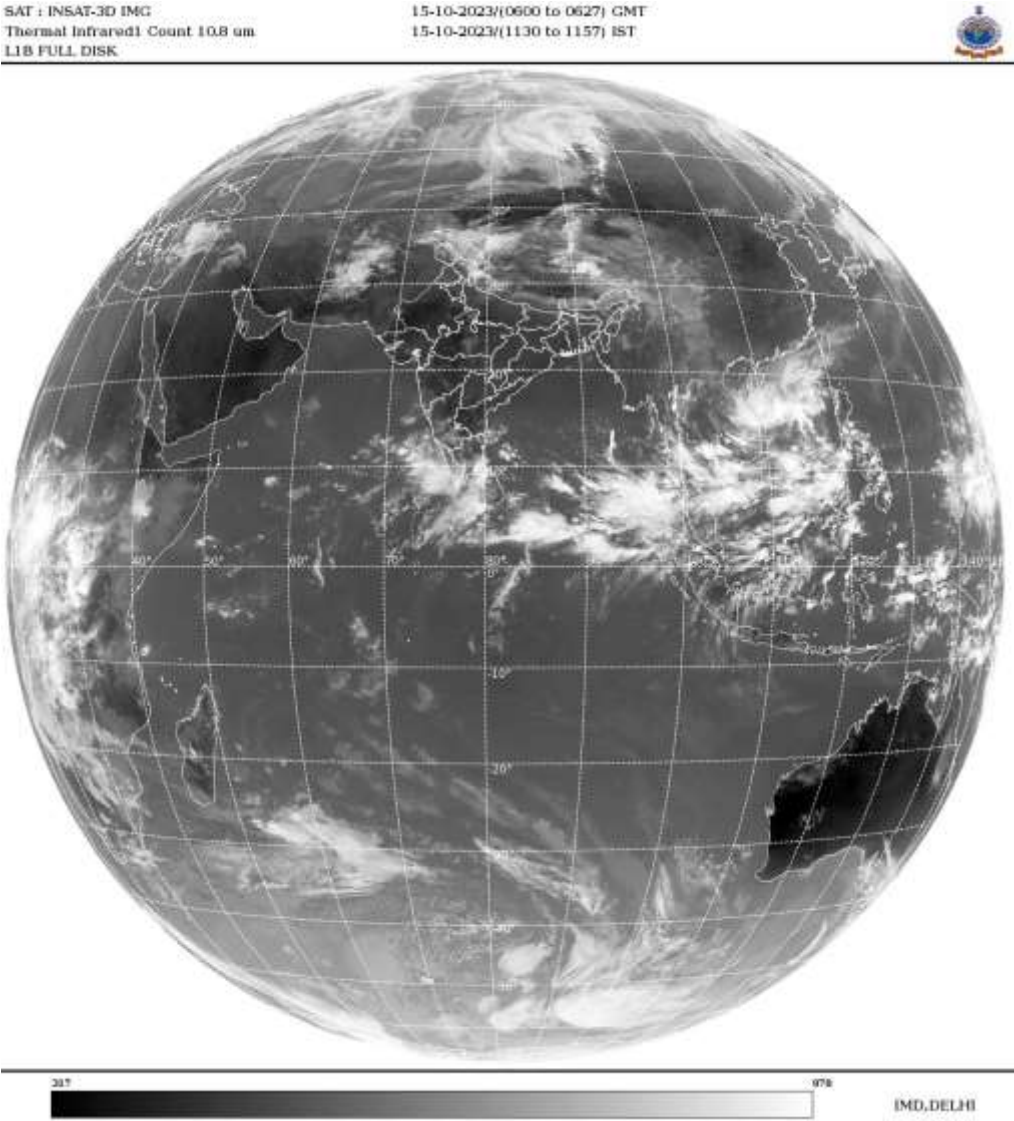
ARABIAN SEA:-

SCT TO BKN LOW/MED CLOUDS WITH EMBDD MOD TO INT CONVTN OVER SE ARSEA OFF KER COAST LKSDP ILS AREA AND COMORIN AREA (.) SCT LOW/MED CLOUDS WITH EMBDD WK TO MOD CONVTN OVER EC ARSEA AND SW ARSEA (.)

BAY OF BENGAL & ANDAMAN SEA:-

SCT LOW/MED CLOUDS WITH EMBDD MOD TO INT CONVTN OVER SOUTH BAY S ANDAMAN SEA AND WK TO MOD CONVTN OVER CENTRAL BAY NORTH ANDAMAN SEA (.)

CLOUDS DESCRIPTION OUTSIDE INDIA:-



SCT LOW/MED CLOUDS WITH EMBDD MOD TO INT CONVTN OVER W SRI LANKA PALK STR GULF OF MANNAR MALDIVES TIBET CHINA S MYANMAR THAILAND GULF OF THAILAND CAMBODIA LAOS VIETNAM GULF OF TONKIN HAINAN SUMATRA STR OF MALACCA MALAYSIA BORNEO SOUTH CHINA SEA CELEBES SEA PHILIPPINES SULU SEA AND OVER INDIAN OCEAN BET LAT 5.0N TO 8.0S LONG 50.0E TO 100.0E (.)

TOO 15/1235 HRS IST=

NNNN

LEGEND:-

| | | |
|------------------------|-----------|--|
| REGION | NORTH | J&K HP PJB HARY DLH UP UTRKND |
| | EAST | BHR JHRKND CHTGH OR WB SKM NORTH- EAST STATES |
| | WEST | RAJ MP GUJ MAHA GOA |
| | SOUTH | TLNGN AP KRNTK KER TN LKSDP ANDAMAN & NICOBAR ILS |
| CLOUD DISTRIBUTION | ISOL | ISOLATED (LESS THAN 25%) |
| | SCT | SCATTERED (25 TO 50%) |
| | BKN | BROKEN (51 TO 75%) |
| | SLD | SOLID (GREATER THAN 75%) |
| CLOUDS TOP TEMPERATURE | CTT | CLOUD TOP TEMPERATURE |
| | WK CONVTN | WEAK CONVECTION (CTT GREATER THAN -25°C) |

| | | |
|---|--------------|---|
| CONVECTION | MOD CONVTN | MODERATE CONVECTION (CTT BETWEEN -25°C TO -40°C) |
| | INT CONVTN | INTENSE CONVECTION (CTT BETWEEN -41°C TO -70°C) |
| | V INT CONVTN | VERY INTENSE CONVECTION (CTT LESS THAN -70°C) |
| METEOROLOGICAL SUB- DIVISIONS, STATES & UNION TERITORIES | ARUPR | ARUNACHAL PRADESH |
| | BHR | BIHAR |
| | CHTGH | CHHATTISGARH |
| | COTL AP | COASTAL ANDHRA PRADESH |
| | COTL KRNTK | COASTAL KARNATAKA |
| | COTL ORS | COASTAL ORISSA |
| | GUJ | GUJARAT |
| | GWB | GANGETIC WEST BENGAL |
| | HARY | HARYANA |
| | DLH | DELHI |
| | HP | HIMACHAL PRADESH |
| | J&K | JAMMU AND KASHMIR |
| | JHRKND | JHARKHAND |
| | KER | KERALA |
| | KKN | KONKAN |
| | LKSDP | LAKSHADWEEP |
| | M MAHA | MADHYA MAHARASHTRA |
| | MAHA | MAHARASHTRA |
| | MANI | MANIPUR |
| | MEGHA | MEGHALAYA |
| | MIZO | MIZORAM |
| | MP | MADHYA PRADESH |
| | MRTHWD | MARATHWADA |
| | NAGA | NAGALAND |
| | N COTL AP | NORTH COASTAL ANDHRA PRADESH |
| | NIK | NORTH INTERIOR KARNATAKA |
| | ORS | ORISSA |
| | PJB | PUNJAB |
| | RAJ | RAJASTHAN |
| | RYLSM | RAYALASEEMA |
| | SAU & KUTCH | SAURASHTRA & KUTCH |
| | SHWB | SUB-HIMALAYAN WEST BENGAL |
| | SIK | SOUTH INTERIOR KARNATAKA |
| | SKM | SIKKIM |
| | TLNGN | TELANGANA |
| | TN | TAMIL NADU |
| | TRP | TRIPURA |
| | UP | UTTAR PRADESH |
| | UTRKND | UTTARAKHAND |
| | VID | VIDHARBHA |
| | SHWB | SUB HIMALAYAN WEST BENGAL |

| | | |
|----------------------|---------------|------------------------------|
| | GWB | GANGETIC WEST BENGAL |
| | ARSEA | ARABIAN SEA |
| | ILS | ISLANDS |
| MISCELLANEOUS | ASSW | IN ASSOCIATION WITH |
| | ASSTD | ASSOCIATED |
| | LLC | LOW LEVEL CIRCULATION |
| | EMBDD | EMBEDDED |
| | N/HOOD | NEIGHBOURHOOD |
| | EXT | EXTREME |