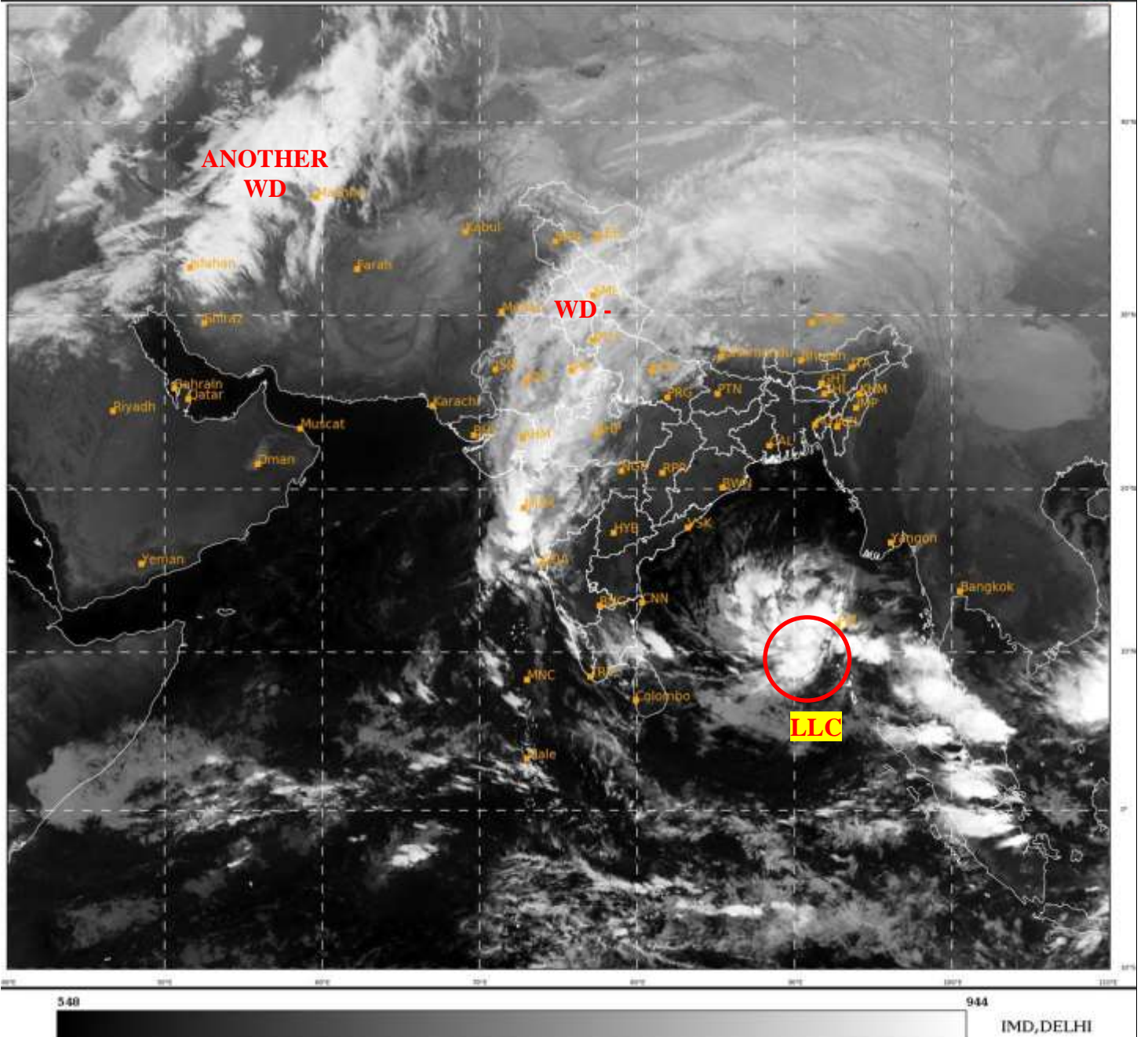




SATELLITE BULLETIN BASED ON SATELLITE
IMAGERIES AND PRODUCTS
01.12.2021 TIME 2100 UTC

SAT : INSAT-3D IMG
IMG_TIRI 10.8 um
LIC Mercator

01-12-2021/(2100 to 2126) GMT
02-12-2021/(0230 to 0256) IST



TCIN50 DEMS 012100

SATELLITE BULLETIN BASED ON INSAT-3D PIC OF 012100 UTC (.)

REGION COVERED BETWEEN LAT 50.0°N TO 30.0°S AND LONG 40.0°E TO 125.0°E (.)

SALIENT FEATURES:-

LLC OVER SE BAY ADJ ANDAMAN SEA:-

LOW LEVEL CIRCULATION (**LLC**) OVER SE BAY ADJ ANDAMAN SEA PERSISTS (.) ASSTD SCT TO BKN LOW/MED CLOUDS WITH EMMDD INT TO V INT CONVTN OVER SE ADJ EC BAY WC ANDAMAN SEA & ANDAMAN ILS (.) MINIMUM CTT MINUS **93** DEG C (.)

MICROWAVE IMAGERY FROM SSMIS AT 1940 UTC INDICATES SCT & DISORGANISED CONVTN WITH EMDD INT TO V INT CONVECTIVE CELLS OVER SE BAY ADJ WC ANDAMAN SEA (.)

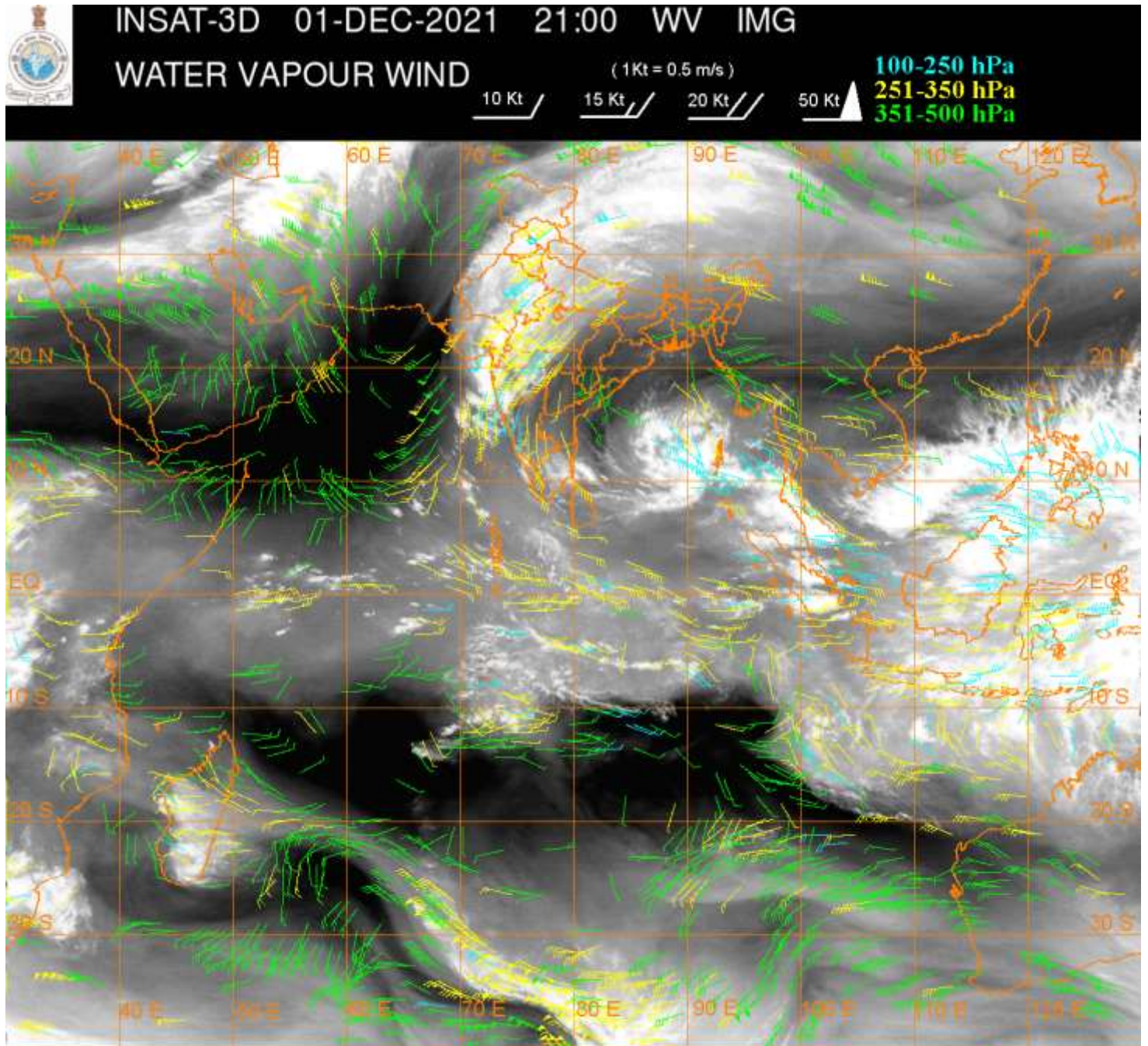
CONVECTION OVER EC ARABIAN SEA OFF MAHARASHTRA COAST & N/HOOD:-

CONVECTION OVER EC ARSEA OFF MAHARASHTRA COAST & KKN AREA PERSISTS (MINIMUM CTT MINUS **85** DEG C) WITH OUTFLOW OBSERVED OVER NW INDIA CAUSED BY DEEP WESTERLY TROUGH (.) CONVECTION OVER GULF OF CAMBAY PERSISTS (.)

WESTERN DISTURBANCE (WD):-

SCT TO BKN MULTILAYERED CLOUDS OVER EC PAK J&K LADAKH HP UTRKND PJB HARY DLH UP RAJ W MP GUJ W MAHA NEPAL TIBET IN ASSW **WD** OVER THE AREA (.)

SCT MULTILAYERED CLOUDS OVER CASPIAN SEA IRAN AND N/HOOD IN ASSW **ANOTHER WD** OVER THE AREA (.)



CLOUDS DESCRIPTION WITHIN INDIA:-

NORTH:-

SCT TO BKN LOW/MED CLOUDS WITH EMBDD MOD TO INT CONVTN OVER E LADAKH HP UTRKND PJB HARY W UP AND WK TO MOD CONVTN OVER W LADAKH J&K DLH E UP (.)

EAST:-

SCT LOW/MED CLOUDS OVER NW BHR SKM ARUPR MEGHA NAGA MANI (.)

WEST:-

BKN LOW/MED CLOUDS WITH EMBDD INT TO V INT CONVTN OVER KKN (MINIMUM CTT MINUS **85** DEG C) (.) SCT TO BKN LOW/MED CLOUDS WITH EMBDD MOD TO INT CONVTN OVER E RAJ E GUJ W MP MADHYA MAHA MRTHWD W VID GOA AND WK TO MOD CONVTN OVER W RAJ W GUJ E MP (.) SCT LOW/MED CLOUDS OVER E VID (.)

SOUTH:-

SCT TO BKN LOW/MED CLOUDS WITH EMBDD INT TO V INT CONVTN OVER ANDAMAN ILS (MINIMUM CTT MINUS **93** DEG C) (.) SCT LOW/MED CLOUDS WITH EMBDD MOD TO INT CONVTN OVER W NIK N KER AND WK TO MOD CONVTN OVER COTL KRNTK S KER TN & NICOBAR ILS (.) SCT LOW/MED CLOUDS OVER TLNGN RYLSM COTL AP SIK & LKSDP (.)

ARABIAN SEA:-

SCT TO BKN LOW/MED CLOUDS WITH EMBDD INT TO V INT CONVTN OVER EC ARSEA OFF MAHA COAST (.) SCT LOW/MED CLOUDS WITH EMBDD MOD TO INT CONVTN OVER GULF OF CAMBAY AND ISOL WK TO MOD CONVTN OVER SE ARSEA (.)

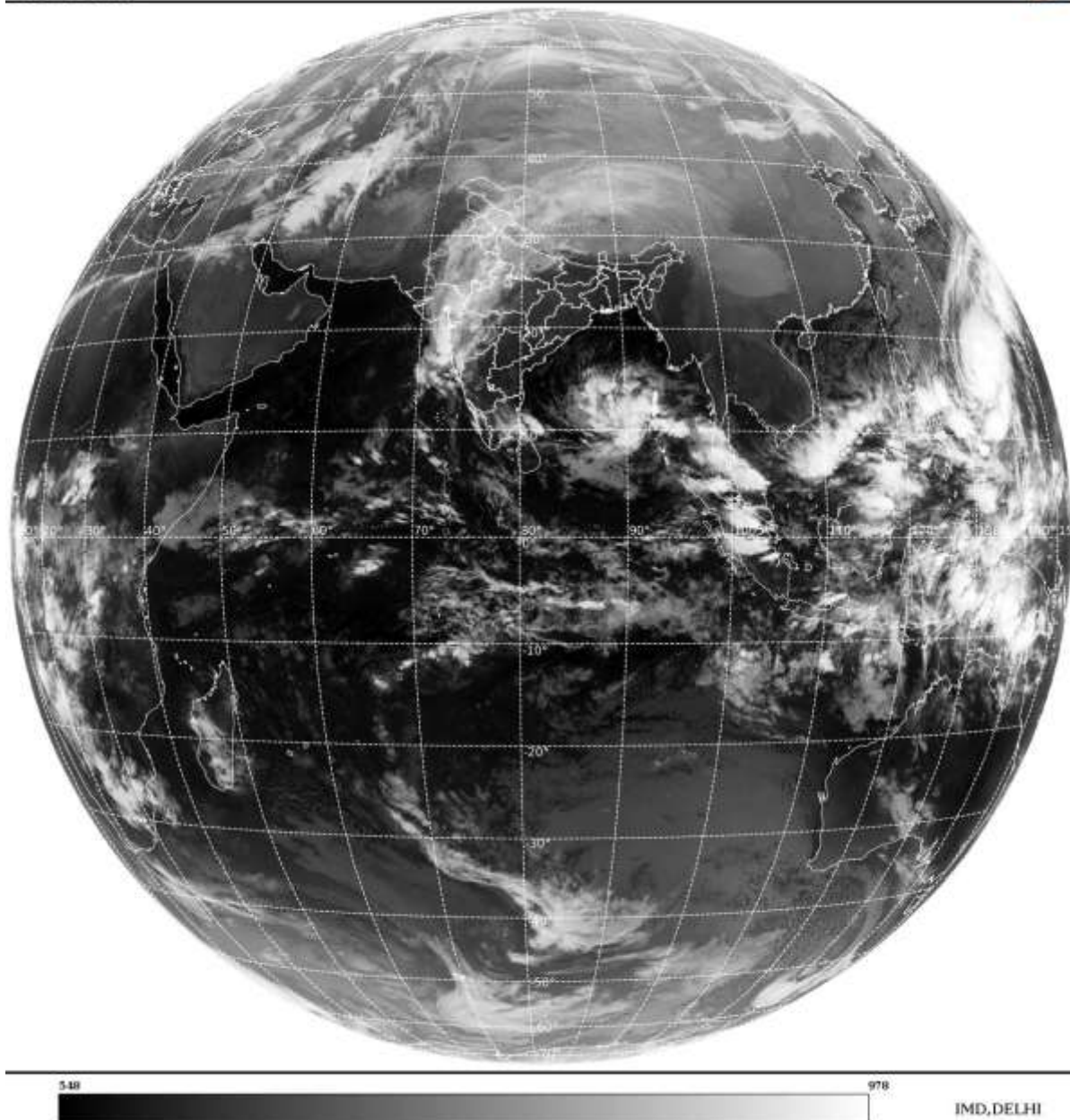
BAY OF BENGAL & ANDAMAN SEA:-

SCT TO BKN LOW/MED CLOUDS WITH EMBDD INT TO V INT CONVTN OVER SEADJ EC BAY & CENTRAL ANDAMAN SEA (.) SCT LOW/MED CLOUDS WITH EMBDD MOD TO INT CONVTN OVER SW BAY PALK STR REST ANDAMAN SEA (.)

CLOUDS DESCRIPTION OUTSIDE INDIA:-

SAT : INSAT-3D IMG
Thermal Infrared1 Count 10.8 um
LIB FULL DISK

01-12-2021/(2100 to 2126) GMT
02-12-2021/(0230 to 0256) IST



SCT LOW/MED CLOUDS WITH EMBDD MOD TO INT CONVTN OVER NEPAL TIBET S THAILAND GULF OF THAILAND SUMATRA STR OF MALACCA MALAYSIA SOUTH CHINA SEA BORNEO JAVA ILS & SEA CELEBES ILS & SEA PHILIPPINES SULU SEA MADAGASCAR AND OVER INDIAN OCEAN BET EQ TO 15.0S LONG 71.0E TO 120.0E (.)

TOO 02/0420EF=

NNNN

LEGEND:-

REGION	NORTH	J&K HP PJB HARY DLH UP UTRKND
	EAST	BHR JHRKND CHTGH ORS WB SKM NORTH- EAST STATES
	WEST	RAJ MP GUJ MAHA GOA
	SOUTH	TLNGN AP KRNTK KER TN LKSDP ANDAMAN & NICOBAR ILS

CLOUD DISTRIBUTION	ISOL	ISOLATED (LESS THAN 25%)	
	SCT	SCATTERED (25 TO 50%)	
	BKN	BROKEN (51 TO 75%)	
	SLD	SOLID (GREATER THAN 75%)	
CLOUDS TOP TEMPERATURE	CTT	CLOUD TOP TEMPERATURE	
CONVECTION	WK CONVTN	WEAK CONVECTION (CTT GREATER THAN -25°C)	
	MOD CONVTN	MODERATE CONVECTION (CTT BETWEEN -25°C TO -40°C)	
	INT CONVTN	INTENSE CONVECTION (CTT BETWEEN -41°C TO -70°C)	
	V INT CONVTN	VERY INTENSE CONVECTION (CTT LESS THAN -70°C)	
METEOROLOGICAL SUB-DIVISIONS, STATES & UNION TERRITORIES	ARUPR	ARUNACHAL PRADESH	
	BHR	BIHAR	
	CHTGH	CHHATTISGARH	
	COTL AP	COASTAL ANDHRA PRADESH	
	COTL KRNTK	COASTAL KARNATAKA	
	COTL ORS	COASTAL ORISSA	
	GUJ	GUJARAT	
	GWB	GANGETIC WEST BENGAL	
	HARY	HARYANA	
	DLH	DELHI	
	HP	HIMACHAL PRADESH	
	J&K	JAMMU AND KASHMIR	
	JHRKND	JHARKHAND	
	KER	KERALA	
	KKN	KONKAN	
	LKSDP	LAKSHADWEEP	
	M MAHA	MADHYA MAHARASHTRA	
	MAHA	MAHARASHTRA	
	MANI	MANIPUR	
	MEGHA	MEGHALAYA	
	MIZO	MIZORAM	
	MP	MADHYA PRADESH	
		MRTHWD	MARATHWADA
		NAGA	NAGALAND
N COTL AP		NORTH COASTAL ANDHRA PRADESH	
NIK		NORTH INTERIOR KARNATAKA	

	ORS	ORISSA
	PJB	PUNJAB
	RAJ	RAJASTHAN
	RYLSM	RAYALASEEMA
	SAU & KUTCH	SAURASHTRA & KUTCH
	SHWB	SUB-HIMALAYAN WEST BENGAL
	SIK	SOUTH INTERIOR KARNATAKA
	SKM	SIKKIM
	TLNGN	TELANGANA
	TN	TAMIL NADU
	TRP	TRIPURA
	UP	UTTAR PRADESH
	UTRKN	UTTARAKHAND
	VID	VIDHARBHA
	SHWB	SUB HIMALAYAN WEST BENGAL
	GWB	GANGETIC WEST BENGAL
	ARSEA	ARABIAN SEA
	ILS	ISLANDS
MISCELLANEOUS	ASSW	IN ASSOCIATION WITH
	ASSTD	ASSOCIATED
	LLC	LOW LEVEL CIRCULATION
	EMBDD	EMBEDDED
	N/HOOD	NEIGHBOURHOOD
	EXT	EXTREME