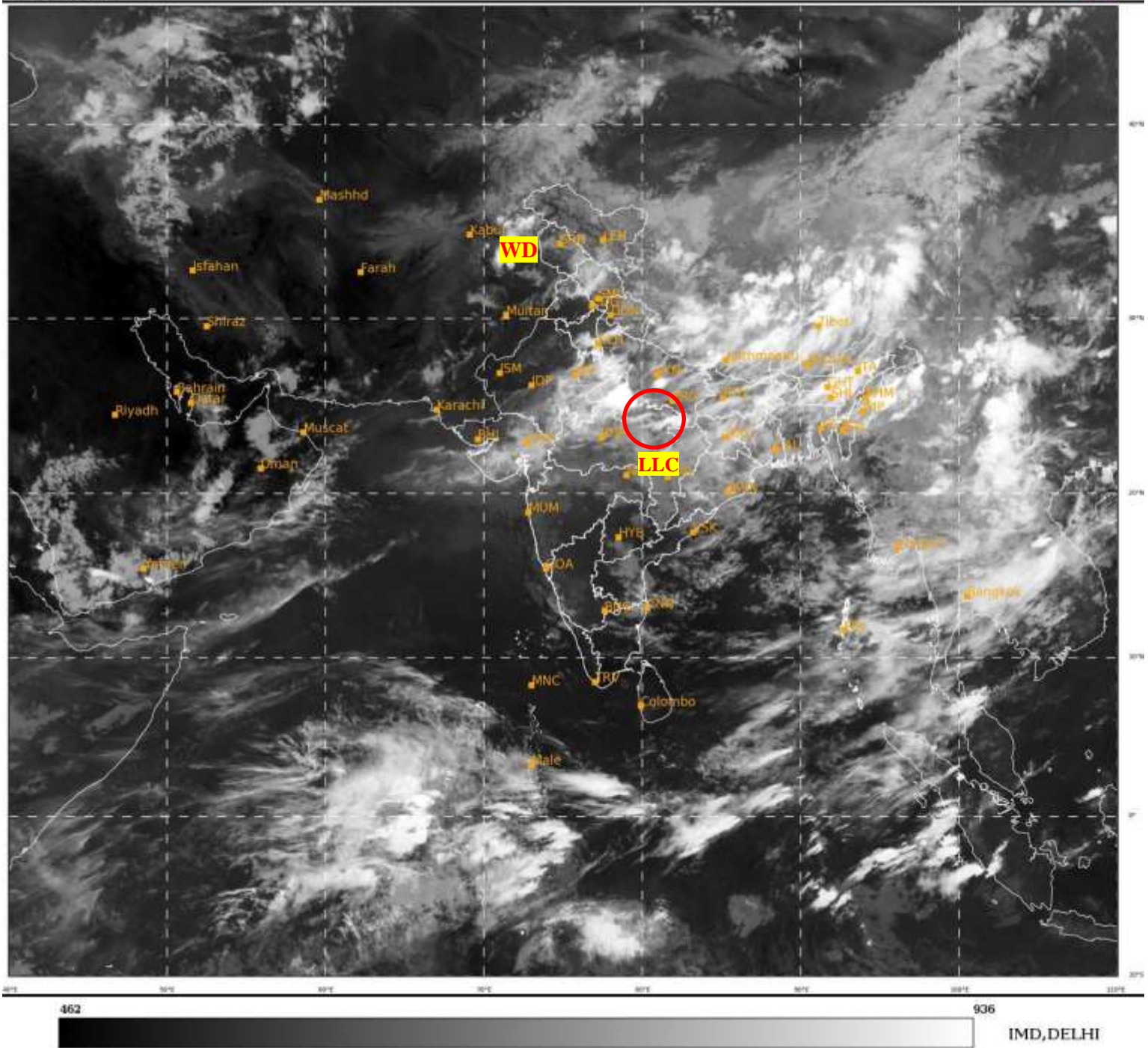




**SATELLITE BULLETIN BASED ON SATELLITE
IMAGERIES AND PRODUCTS**
04.08.2023 TIME 1800 UTC

SAT : INSAT-3D IMG
IMG_TIR1 10.8 um
LLC Mercator

04-08-2023/(1700 to 1726) GMT
04-08-2023/(2230 to 2256) IST



TCIN50 DEMS 041800

SATELLITE BULLETIN BASED ON INSAT-3D PIC OF 041700 UTC (.)

REGION COVERED BETWEEN LAT 50.0°N TO 35.0°S AND LONG 40.0°E TO 125.0°E (.)

SALIENT FEATURES:-

LLC OVER NORTH-EAST MADHYA PRADESH & N/HOOD:-

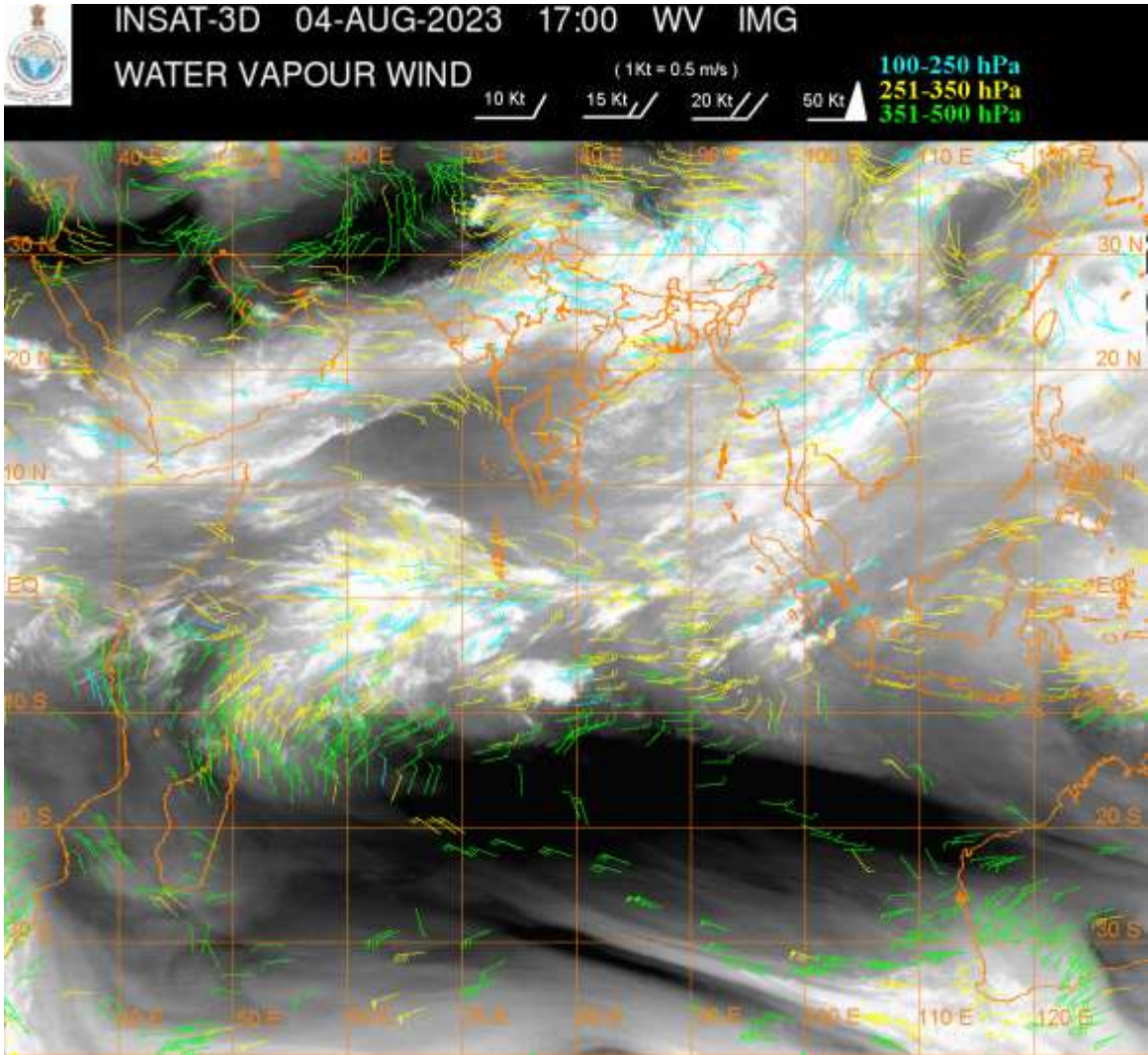
LOW LEVEL CIRCULATION (**LLC**) OVER NE MP & N/HOOD (.) ASSTD SCT TO BKN LOW/MED CLOUDS WITH EMBDD MOD TO INT CONVTN OVER NW MP (MINIMUM **CTT MINUS 90** DEG CEL) AND MOD TO INT CONVTN OVER NE MP & N/HOOD (.)

WESTERN DISTURBANCE (WD):-

SCT MULTILAYERED CLOUDS OVER N PAK J&K LADAKH & N/HOOD IN ASSW **WD** OVER THE AREA (.)

THUNDERSTORM / CONVECTIVE ACTIVITY:-

**MODERATE TO INTENSE THUNDERSTORM / CONVECTIVE ACTIVITY OBSERVED OVER N HP
N PJB S HARY UP N MP E BHR JHRKND NE RAJ S SHWB NE STATES (.)**



CLOUDS DESCRIPTION WITHIN INDIA:-

NORTH:-

SCT TO BKN LOW/MED CLOUDS WITH EMBDD INT TO V INT CONVTN OVER SE HARY SW UP (MINIMUM **CTT MINUS 93 DEG CEL) (.) SCT LOW/MED CLOUDS WITH EMBDD MOD TO INT CONVTN OVER N HP N PJB S UTRKND DLH REST UP AND WK TO MOD CONVTN OVER LADAKH J&K S HP REST UTRKND (.) SCT LOW/MED CLOUDS OVER S PJB REST HARY (.)**

EAST:-

SCT TO BKN LOW/MED CLOUDS WITH EMBDD INT TO V INT CONVTN OVER E BHR C ASSAM SW ARUPR MANI (MINIMUM **CTT MINUS 86 DEG CEL) (.) SCT LOW/MED CLOUDS WITH EMBDD MOD TO INT CONVTN OVER REST BHR JHRKND ORS GWB SHWB REST NE STATES BD AND WK TO MOD CONVTN OVER CHTGH (.)**

WEST:-

SCT TO BKN LOW/MED CLOUDS WITH EMBDD INT TO V INT CONVTN OVER NE MP (MINIMUM **CTT MINUS 93 DEG CEL) (.) SCT LOW/MED CLOUDS WITH EMBDD MOD TO INT CONVTN OVER E RAJ REST MP GUJ AND WK TO MOD CONVTN OVER REST RAJ NORTH MADHYA MAHA VID (.) SCT LOW/MED CLOUDS OVER REST MAHA & GOA (.)**

SOUTH:-

SCT LOW/MED CLOUDS WITH EMBDD ISOL WK TO MOD CONVTN OVER S COTL AP ANDAMAN & NICOBAR ILS (.) SCT LOW/MED CLOUDS OVER COTL KRNTK TLNGN RYLSM N TN (.) SCT LOW/MED CLOUDS OVER REST KRNTK KER REST TN LKSDP ILS (.)

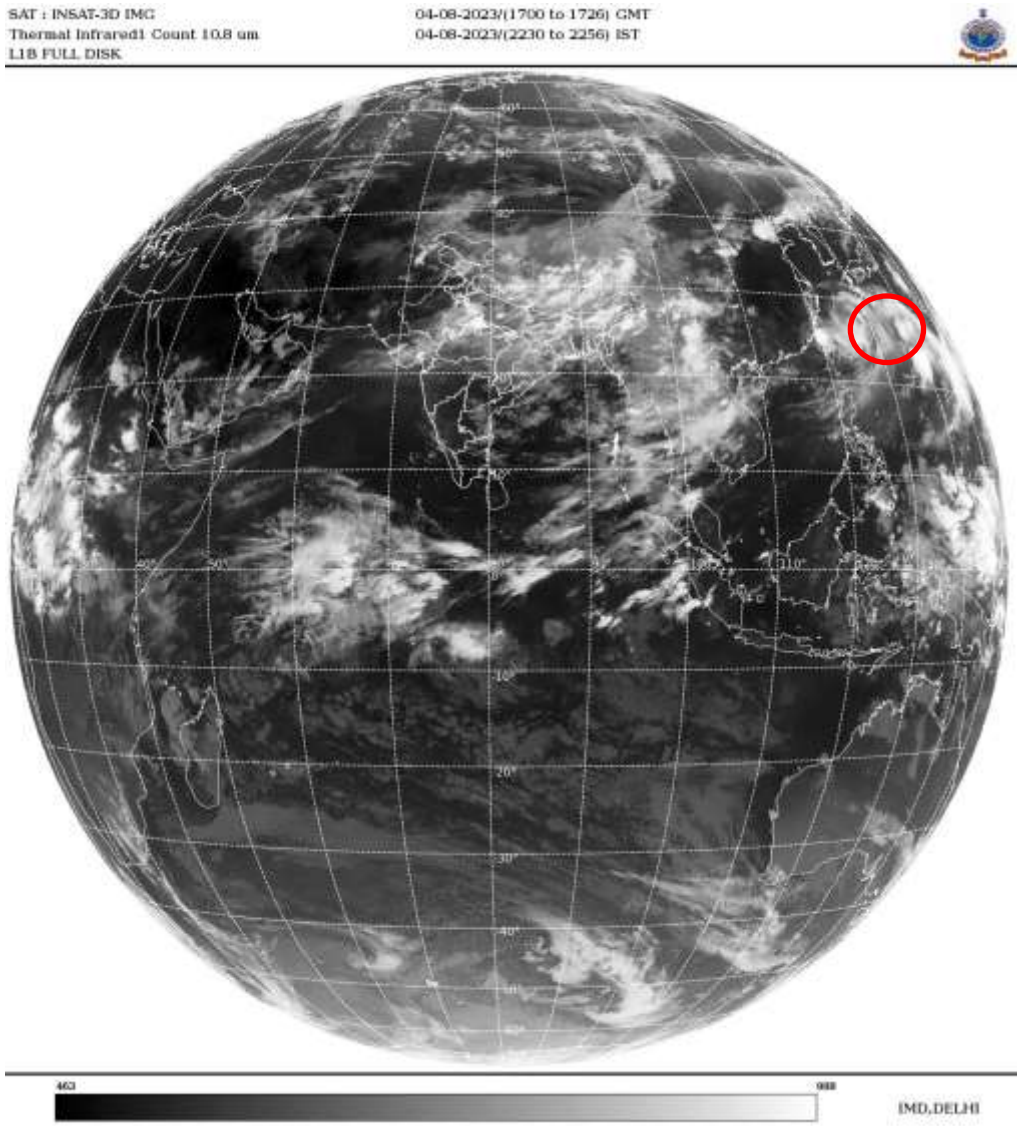
ARABIAN SEA:-

SCT LOW/MED CLOUDS WITH EMBDD MOD TO INT CONVTN OVER SOUTH ARSEA AND ISOL WK TO MOD CONVTN OVER REST ARSEA & GULF OF CAMBAY (.)

BAY OF BENGAL & ANDAMAN SEA:-

SCT TO BKN LOW/MED CLOUDS WITH EMBDD MOD TO INT CONVTN OVER ANDAMAN SEA & TENASSERIM COAST GULF OF MARTABAN (.) SCT LOW/MED CLOUDS WITH EMBDD ISOL WK TO MOD CONVTN OVER BAY (.)

CLOUDS DESCRIPTION OUTSIDE INDIA:-



VORTEX (KHANUN) OVER EAST CHINA SEA:-

VORTEX (**KHANUN**) OVER EAST CHINA SEA WITH CENTERED NEAR **27.5N / 126.2E** (.) INTENSITY **T3.0/3.5** (.) ASSTD BKN LOW/MED CLOUDS WITH EMBDD INT TO V INT CONVTN OVER AREA BET LAT 22.5N TO 32.5N LONG 120.0E TO 130.0E & TAIWAN (.)

SCT LOW/MED CLOUDS WITH EMBDD MOD TO INT CONVTN OVER MALDIVES NEPAL BHUTAN TIBET CHINA MYANMAR THAILAND GULF OF THAILAND CAMBODIA LAOS VIETNAM GULF OF TONKIN HAINAN TAIWAN EAST CHINA SEA SUMATRA STR OF MALACCA MALAYSIA SOUTH CHINA SEA PHILIPPINES AND OVER INDIAN OCEAN BET LAT 5.0N TO 10.0S LONG 53.0E TO 102.0E (.)

TOO 04/2340 HRS IST=

NNNN

LEGEND:-

REGION	NORTH	J&K HP PJB HARY DLH UP UTRKND
	EAST	BHR JHRKND CHTGH OR WB SKM NORTH- EAST STATES
	WEST	RAJ MP GUJ MAHA GOA
	SOUTH	TLNGN AP KRNTK KER TN LKSDP ANDAMAN & NICOBAR ILS

CLOUD DISTRIBUTION	ISOL	ISOLATED (LESS THAN 25%)
	SCT	SCATTERED (25 TO 50%)
	BKN	BROKEN (51 TO 75%)
	SLD	SOLID (GREATER THAN 75%)
CLOUDS TOP TEMPERATURE	CTT	CLOUD TOP TEMPERATURE
CONVECTION	WK CONVTN	WEAK CONVECTION (CTT GREATER THAN -25°C)
	MOD CONVTN	MODERATE CONVECTION (CTT BETWEEN -25°C TO -40°C)
	INT CONVTN	INTENSE CONVECTION (CTT BETWEEN -41°C TO -70°C)
	V INT CONVTN	VERY INTENSE CONVECTION (CTT LESS THAN -70°C)
METEOROLOGICAL SUB- DIVISIONS, STATES & UNION TERITORIES	ARUPR	ARUNACHAL PRADESH
	BHR	BIHAR
	CHTGH	CHHATTISGARH
	COTL AP	COASTAL ANDHRA PRADESH
	COTL KRNTK	COASTAL KARNATAKA
	COTL ORS	COASTAL ORISSA
	GUJ	GUJARAT
	GWB	GANGETIC WEST BENGAL
	HARY	HARYANA
	DLH	DELHI
	HP	HIMACHAL PRADESH
	J&K	JAMMU AND KASHMIR
	JHRKND	JHARKHAND
	KER	KERALA
	KKN	KONKAN
	LKSDP	LAKSHADWEEP
	M MAHA	MADHYA MAHARASHTRA
	MAHA	MAHARASHTRA
	MANI	MANIPUR
	MEGHA	MEGHALAYA
	MIZO	MIZORAM
	MP	MADHYA PRADESH
	MRTHWD	MARATHWADA
	NAGA	NAGALAND
	N COTL AP	NORTH COASTAL ANDHRA PRADESH
	NIK	NORTH INTERIOR KARNATAKA
	ORS	ORISSA
	PJB	PUNJAB
	RAJ	RAJASTHAN
	RYLSM	RAYALASEEMA
	SAU & KUTCH	SAURASHTRA & KUTCH
	SHWB	SUB-HIMALAYAN WEST BENGAL
	SIK	SOUTH INTERIOR KARNATAKA
	SKM	SIKKIM

	TLNGN	TELANGANA
	TN	TAMIL NADU
	TRP	TRIPURA
	UP	UTTAR PRADESH
	UTRKND	UTTARAKHAND
	VID	VIDHARBHA
	SHWB	SUB HIMALAYAN WEST BENGAL
	GWB	GANGETIC WEST BENGAL
	ARSEA	ARABIAN SEA
	ILS	ISLANDS
MISCELLANEOUS	ASSW	IN ASSOCIATION WITH
	ASSTD	ASSOCIATED
	LLC	LOW LEVEL CIRCULATION
	EMBDD	EMBEDDED
	N/HOOD	NEIGHBOURHOOD
	EXT	EXTREME