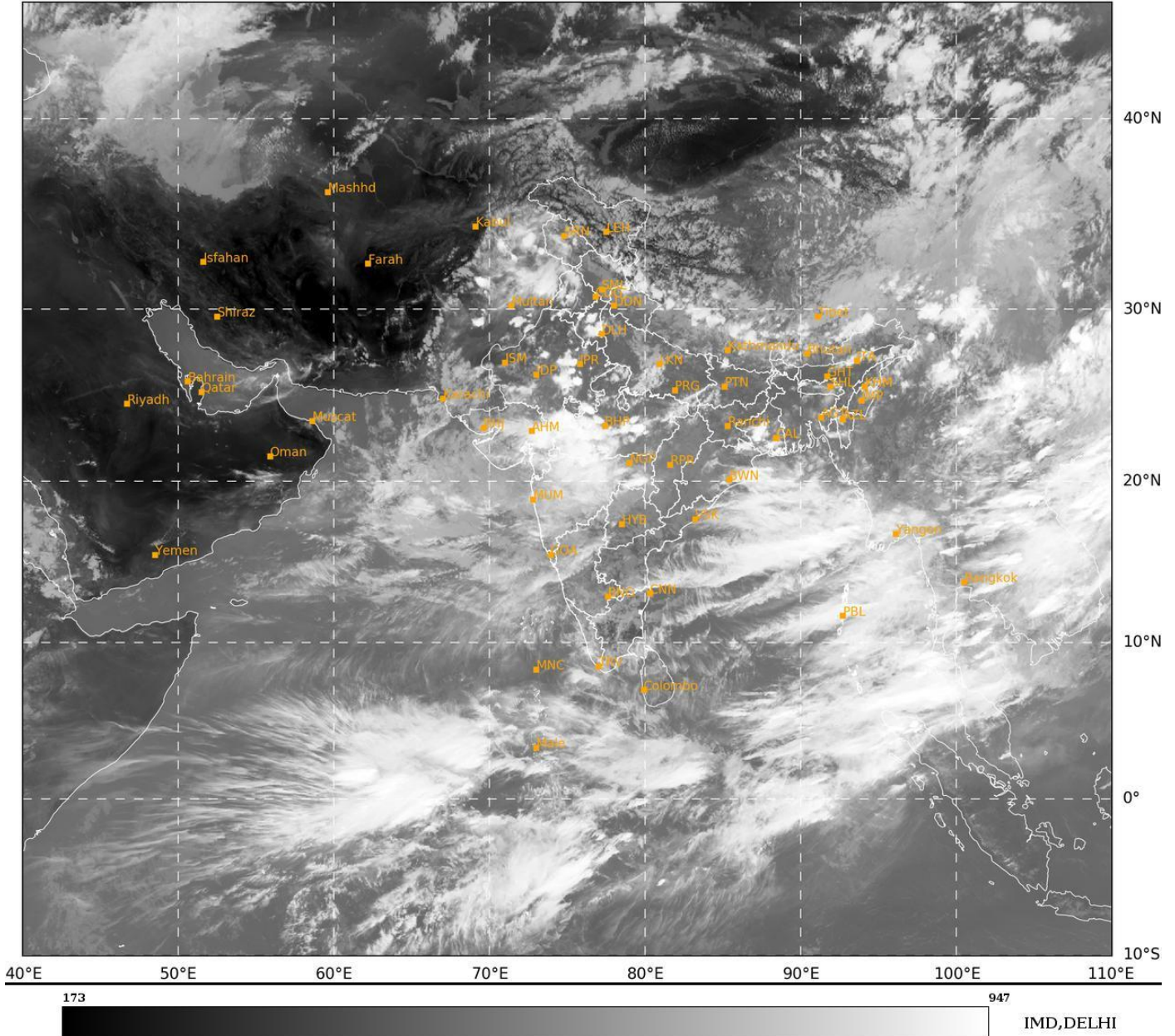




**SATELLITE BULLETIN BASED ON SATELLITE  
IMAGERIES AND PRODUCTS**  
**28.07.2024 TIME 0900 UTC**

SAT : INSAT-3DR IMG  
IMG TIR1 10.8 um  
LIC Mercator

28-07-2024/(0845 to 0912) GMT  
28-07-2024/(1415 to 1442) IST



TCIN50 DEMS 280900

SATELLITE BULLETIN BASED ON INSAT-3DR PIC OF 280845 UTC (.)

REGION COVERED BETWEEN LAT 50.0°N TO 35.0°S AND LONG 40.0°E TO 125.0°E (.)

**SALIENT FEATURES:-**

**CONVECTIVE / THUNDERSTORM ACTIVITY:-**

INTENSE TO VERY INTENSE CONVECTIVE / THUNDERSTORM ACTIVITY OBSERVED OVER C HARY S MP VID E RAJ E GUJ W GWB (MINIMUM **CTT MINUS 70-90 DEG CEL**) (.)

MODERATE TO INTENSE CONVECTIVE / THUNDERSTORM ACTIVITY OBSERVED OVER J&K NW UTRKND W PJB N DLH NW&SE UP S GUJ W RAJ REST MAHA W BHR SKM W MEGHA ARUPR NE ASSAM S NAGA MIZO N TLNGN S KER NIK ANDAMAN & NICOBAR ILS (MINIMUM **CTT MINUS 45-70 DEG CEL**) (.)



INSAT-3DR 28-JUL-2024 08:45 WV IMG

WATER VAPOUR WIND

(1Kt = 0.5 m/s)

10 Kt

15 Kt

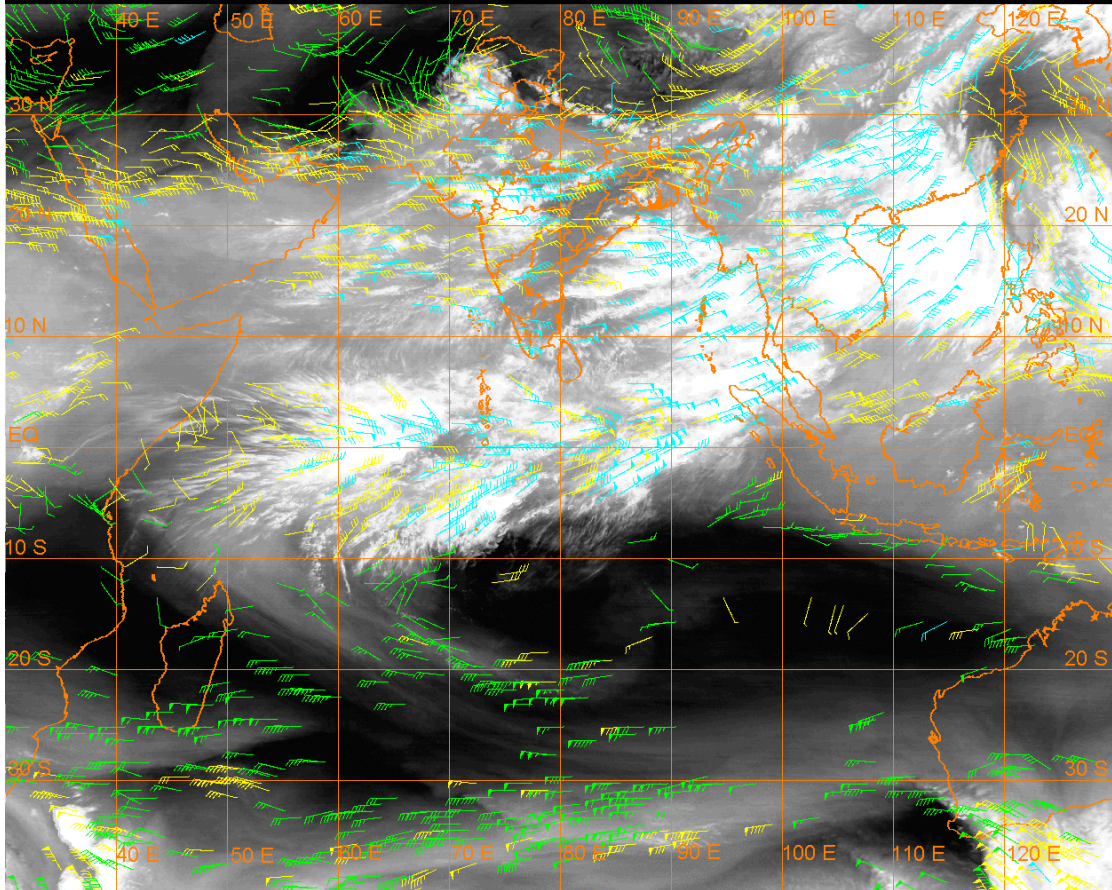
20 Kt

50 Kt

100-250 hPa

251-350 hPa

351-500 hPa



### **CLOUDS DESCRIPTION WITHIN INDIA:-**

#### **NORTH:-**

SCT LOW/MED CLOUDS WITH EMBDD INT TO V INT CONVTN OVER C HARY(.) SCT LOW/MED CLOUDS WITH EMBDD MOD TO INT CONVTN OVER J&K NE HP NW UTRKND W PJB N DLH NW&SE UP AND WK TO MOD CONVTN OVER LADAKH NW HP NE UTRKND S HARY REST UP (.) SCT LOW/MED CLOUDS OVER E PJB N HARY S DLH (.)

#### **EAST:-**

SCT TO BKN LOW/MED CLOUDS WITH EMBDD INT TO V INT CONVTN OVER W GWB (.) SCT LOW/MED CLOUDS WITH EMBDD MOD TO INT CONVTN OVER W BHR NE ORS SE GWB SKM ARUPR NE ASSAM W MEGHA MIZO N TRP AND WK TO MOD CONVTN OVER EXT PARTS OF JHRKND N CHTGH NORTH SHWB MANI (.) SCT LOW/MED CLOUDS OVER E BHR REST JHRKND S CHTGH REST ORS SOUTH SHWB SE ASSAM S TRP (.)

#### **WEST:-**

SCT TO BKN LOW/MED CLOUDS WITH EMBDD INT TO V INT CONVTN OVER E RAJ S MP VID NE GUJ (.) SCT TO BKN LOW/MED CLOUDS WITH EMBDD MOD TO INT CONVTN OVER W RAJ S GUJ REST MAHA N MP AND WK TO MOD CONVTN OVER GOA (.)

#### **SOUTH:-**

SCT LOW/MED CLOUDS WITH EMBDD MOD TO INT CONVTN OVER NIK N TLNGN S KER ANDAMAN & NICOBAR ILS (.) SCT LOW/MED CLOUDS WITH EMBDD AND WK TO MOD CONVTN OVER SW TLNGN SIK RYLSM COTL AP S KER TN LKSDP ILS (.)

#### **ARABIAN SEA:-**

SCT LOW/MED CLOUDS WITH EMBDD MOD TO INT CONVTN OVER NORTH & CENTRAL ARSEA GULF OF CAMBAY LKSDP ILS AREA MALDIVES & COMORIN AREA (.) SCT LOW/MED CLOUDS WITH EMBDD WK TO MOD CONVTN OVER GULF OF KUTCH REST ARSEA (.)

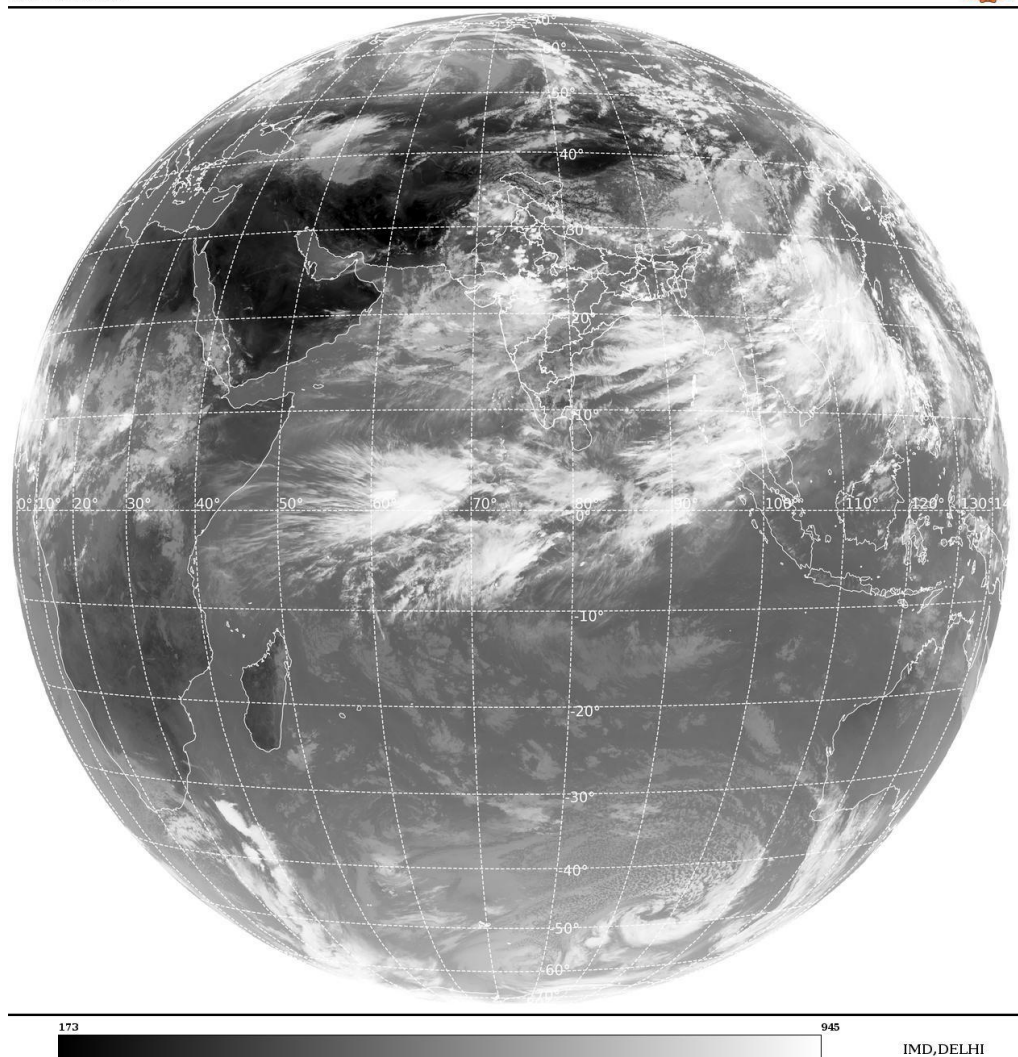
#### **BAY OF BENGAL & ANDAMAN SEA:-**

SCT LOW/MED CLOUDS WITH EMBDD INT TO V INT CONVTN OVER NORTH & CENTRAL BAY SE BAY ANDAMAN SEA TENASSERIM COAST GULF OF MARTABAN & ARAKAN COAST (.) SCT LOW/MED CLOUDS WITH EMBDD MOD TO INT CONVTN OVER REST BAY (.)

**CLOUDS DESCRIPTION OUTSIDE INDIA:-**

SAT : INSAT-3DR IMG  
 Thermal Infrared1 Count 10.8 um  
 L1B FULL DISK

28-07-2024/(0845 to 0912) GMT  
 28-07-2024/(1415 to 1442) IST



**SCT LOW/MED CLOUDS WITH EMBDD MOD TO INT CONVTN OVER MALDIVES PAK NEPAL BHUTAN TIBET CHINA MYANMAR THAILAND GULF OF THAILAND CAMBODIA LAOS VIETNAM HAINAN NORTH SUMATRA MALAY PENISULA SOUTH CHINA SEA BORNEO CELEBES ILS & SEA PHILIPPINES SULU SEA AND OVER INDIAN OCEAN BET LAT 5.0N TO 10.0S LONG 55.0E TO 100.0E (.)**

**TOO 28/1520 HRS IST=**

**NNNN**

**LEGEND:-**

|                               |              |  |
|-------------------------------|--------------|--|
| <b>REGION</b>                 | <b>NORTH</b> | <b>J&amp;K HP PJB HARY DLH UP UTRKND</b>                     |
|                               | <b>EAST</b>  | <b>BHR JHRKND CHTGH OR WB SKM NORTH- EAST STATES</b>         |
|                               | <b>WEST</b>  | <b>RAJ MP GUJ MAHA GOA</b>                                   |
|                               | <b>SOUTH</b> | <b>TLNGN AP KRNTK KER TN LKSDP ANDAMAN &amp; NICOBAR ILS</b> |
| <b>CLOUD DISTRIBUTION</b>     | <b>ISOL</b>  | <b>ISOLATED (LESS THAN 25%)</b>                              |
|                               | <b>SCT</b>   | <b>SCATTERED (25 TO 50%)</b>                                 |
|                               | <b>BKN</b>   | <b>BROKEN (51 TO 75%)</b>                                    |
|                               | <b>SLD</b>   | <b>SOLID (GREATER THAN 75%)</b>                              |
| <b>CLOUDS TOP TEMPERATURE</b> | <b>CTT</b>   | <b>CLOUD TOP TEMPERATURE</b>                                 |

|   |                      |   |   |
|---|----------------------|---|---|
| <b>CONVECTION</b>   | <b>WK CONVNTN</b>    | <b>WEAK CONVECTION<br/>(CTT GREATER THAN -25°C)</b>         |   |
|   | <b>MOD CONVNTN</b>   | <b>MODERATE CONVECTION<br/>(CTT BETWEEN -25°C TO -40°C)</b> |   |
|   | <b>INT CONVNTN</b>   | <b>INTENSE CONVECTION<br/>(CTT BETWEEN -41°C TO -70°C)</b>  |   |
|   | <b>V INT CONVNTN</b> | <b>VERY INTENSE CONVECTION<br/>(CTT LESS THAN -70°C)</b>    |   |
| <b>METEOROLOGICAL<br/>SUB- DIVISIONS,<br/>STATES &amp; UNION<br/>TERITORIES</b> | <b>ARUPR</b>         | <b>ARUNACHAL PRADESH</b>                                    |   |
|   | <b>BHR</b>           | <b>BIHAR</b>  |   |
|   | <b>CHTGH</b>         | <b>CHHATTISGARH</b>   |   |
|   | <b>COTL AP</b>       | <b>COASTAL ANDHRA PRADESH</b>                               |   |
|   | <b>COTL KRNTK</b>    | <b>COASTAL KARNATAKA</b>                                    |   |
|   | <b>COTL ORS</b>      | <b>COASTAL ORISSA</b>                                       |   |
|   | <b>GUJ</b>           | <b>GUJARAT</b>  |   |
|   | <b>GWB</b>           | <b>GANGETIC WEST BENGAL</b>                                 |   |
|   | <b>HARY</b>          | <b>HARYANA</b>  |   |
|   | <b>DLH</b>           | <b>DELHI</b>  |   |
|   | <b>HP</b>            | <b>HIMACHAL PRADESH</b>                                     |   |
|   | <b>J&amp;K</b>       | <b>JAMMU AND KASHMIR</b>                                    |   |
|   | <b>JHRKND</b>        | <b>JHARKHAND</b>  |   |
|   | <b>KER</b>           | <b>KERALA</b>   |   |
|   | <b>KKN</b>           | <b>KONKAN</b>   |   |
|   | <b>LKSDP</b>         | <b>LAKSHADWEEP</b>  |   |
|   | <b>M MAHA</b>        | <b>MADHYA MAHARASHTRA</b>                                   |   |
|   | <b>MAHA</b>          | <b>MAHARASHTRA</b>  |   |
|   | <b>MANI</b>          | <b>MANIPUR</b>  |   |
|   | <b>MEGHA</b>         | <b>MEGHALAYA</b>  |   |
|   | <b>MIZO</b>          | <b>MIZORAM</b>  |   |
|   | <b>MP</b>            | <b>MADHYA PRADESH</b>                                       |   |
|   |                      | <b>MRTHWD</b>   | <b>MARATHWADA</b>                       |
|   |                      | <b>NAGA</b>   | <b>NAGALAND</b>                         |
|   |                      | <b>N COTL AP</b>  | <b>NORTH COASTAL ANDHRA<br/>PRADESH</b> |
|   |                      | <b>NIK</b>  | <b>NORTH INTERIOR KARNATAKA</b>         |
| <b>ORS</b>  |                      | <b>ORISSA</b>   |   |
| <b>PJB</b>  |                      | <b>PUNJAB</b>   |   |
| <b>RAJ</b>  |                      | <b>RAJASTHAN</b>  |   |
| <b>RYLSM</b>  |                      | <b>RAYALASEEMA</b>  |   |
| <b>SAU &amp; KUTCH</b>  |                      | <b>SAURASHTRA &amp; KUTCH</b>                               |   |
| <b>SHWB</b>   |                      | <b>SUB-HIMALAYAN WEST BENGAL</b>                            |   |
| <b>SIK</b>  |                      | <b>SOUTH INTERIOR KARNATAKA</b>                             |   |
| <b>SKM</b>  |                      | <b>SIKKIM</b>   |   |
| <b>TLNGN</b>  |                      | <b>TELANGANA</b>  |   |
| <b>TN</b>   |                      | <b>TAMIL NADU</b>   |   |
| <b>TRP</b>  |                      | <b>TRIPURA</b>  |   |
| <b>UP</b>   |                      | <b>UTTAR PRADESH</b>  |   |
| <b>UTRKND</b>   |                      | <b>UTTARAKHAND</b>  |   |
| <b>VID</b>  |                      | <b>VIDHARBHA</b>  |   |

|                      |               |                                  |
|----------------------|---------------|----------------------------------|
|                      | <b>SHWB</b>   | <b>SUB HIMALAYAN WEST BENGAL</b> |
|                      | <b>GWB</b>    | <b>GANGETIC WEST BENGAL</b>      |
|                      | <b>ARSEA</b>  | <b>ARABIAN SEA</b>               |
|                      | <b>ILS</b>    | <b>ISLANDS</b>                   |
| <b>MISCELLANEOUS</b> | <b>ASSW</b>   | <b>IN ASSOCIATION WITH</b>       |
|                      | <b>ASSTD</b>  | <b>ASSOCIATED</b>                |
|                      | <b>LLC</b>    | <b>LOW LEVEL CIRCULATION</b>     |
|                      | <b>EMBDD</b>  | <b>EMBEDDED</b>                  |
|                      | <b>N/HOOD</b> | <b>NEIGHBOURHOOD</b>             |
|                      | <b>EXT</b>    | <b>EXTREME</b>                   |