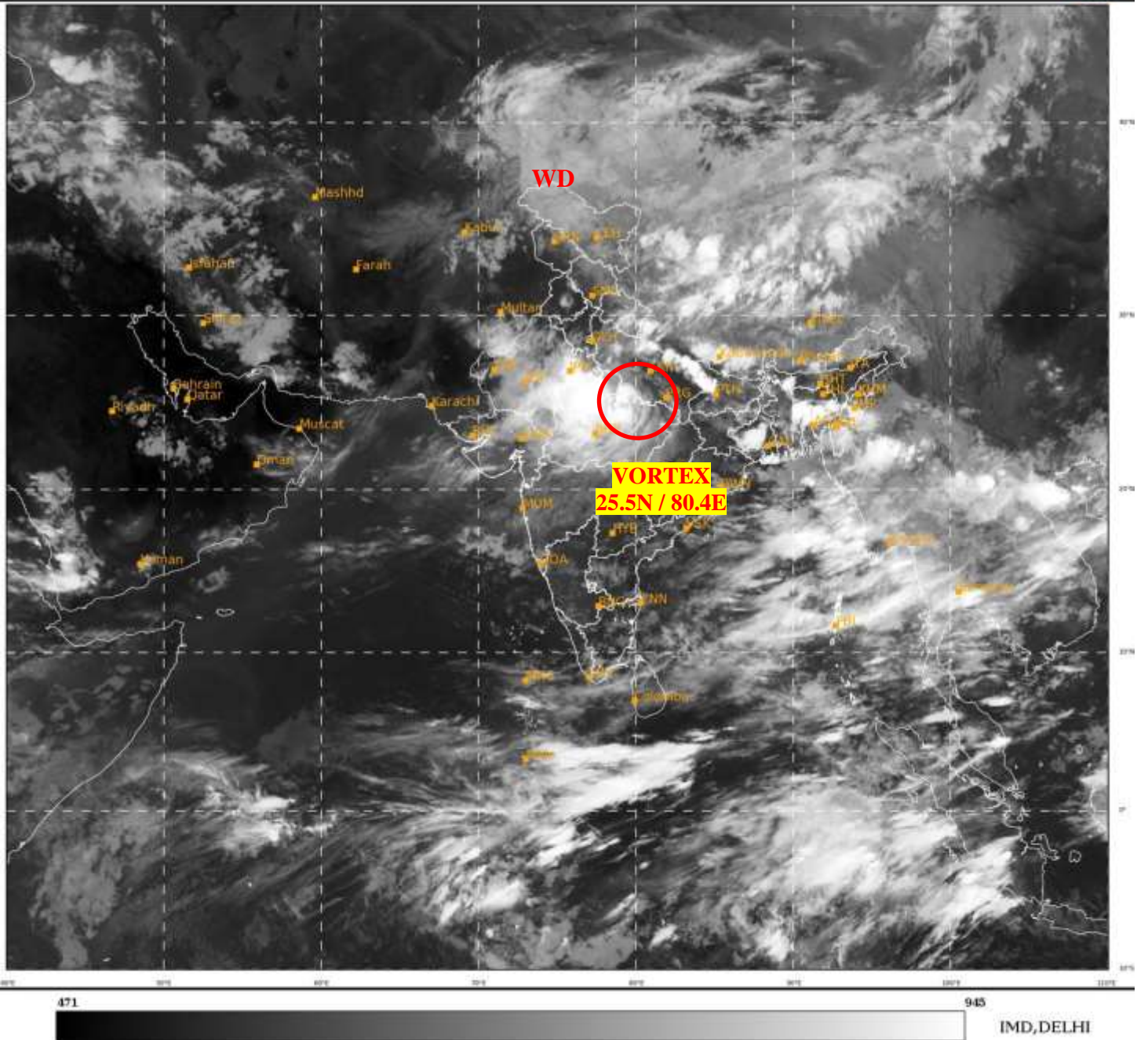




**SATELLITE BULLETIN BASED ON SATELLITE  
IMAGERIES AND PRODUCTS**  
**01.08.2021 TIME 1800 UTC**

SAT : INSAT-3D IMG  
IMG\_TIR1 10.8 um  
LIC Mercator

01-08-2021/(1700 to 1726) GMT  
01-08-2021/(2230 to 2256) IST



TCIN50 DEMS 011800  
SATELLITE BULLETIN BASED ON INSAT-3D PIC OF 011700 UTC (.)  
REGION COVERED BETWEEN LAT 50.0°N TO 30.0°S AND LONG 40.0°E TO 125.0°E (.)

**SALIENT FEATURES:-**

**VORTEX OVER SOUTH-CENTRAL UP & N/HOOD:-**

VORTEX OVER SOUTH-CENTRAL UP ADJ NE MP & N/HOOD CENTERED WITHIN HALF A DEGREE OF **25.5N/80.4E** (.) **OVERLAND** (.) ASSTD BKN LOW/MED CLOUDS WITH EMBDD INT TO V INT CONVTN OVER S UP ADJ N MP (.) MINIMUM CTT MINUS **93** DEG CEL (.)

**WESTERN DISTURBANCE (WD):-**

SCT MULTILAYERED CLOUDS OVER EXTREME N PAK J&K LADAKH N TIBET ADJ CHINA IN ASSW **WD** OVER THE AREA (.)



INSAT-3D 01-AUG-2021 17:00 WV IMG

WATER VAPOUR WIND

(1Kt = 0.5 m/s)

10 Kt

15 Kt

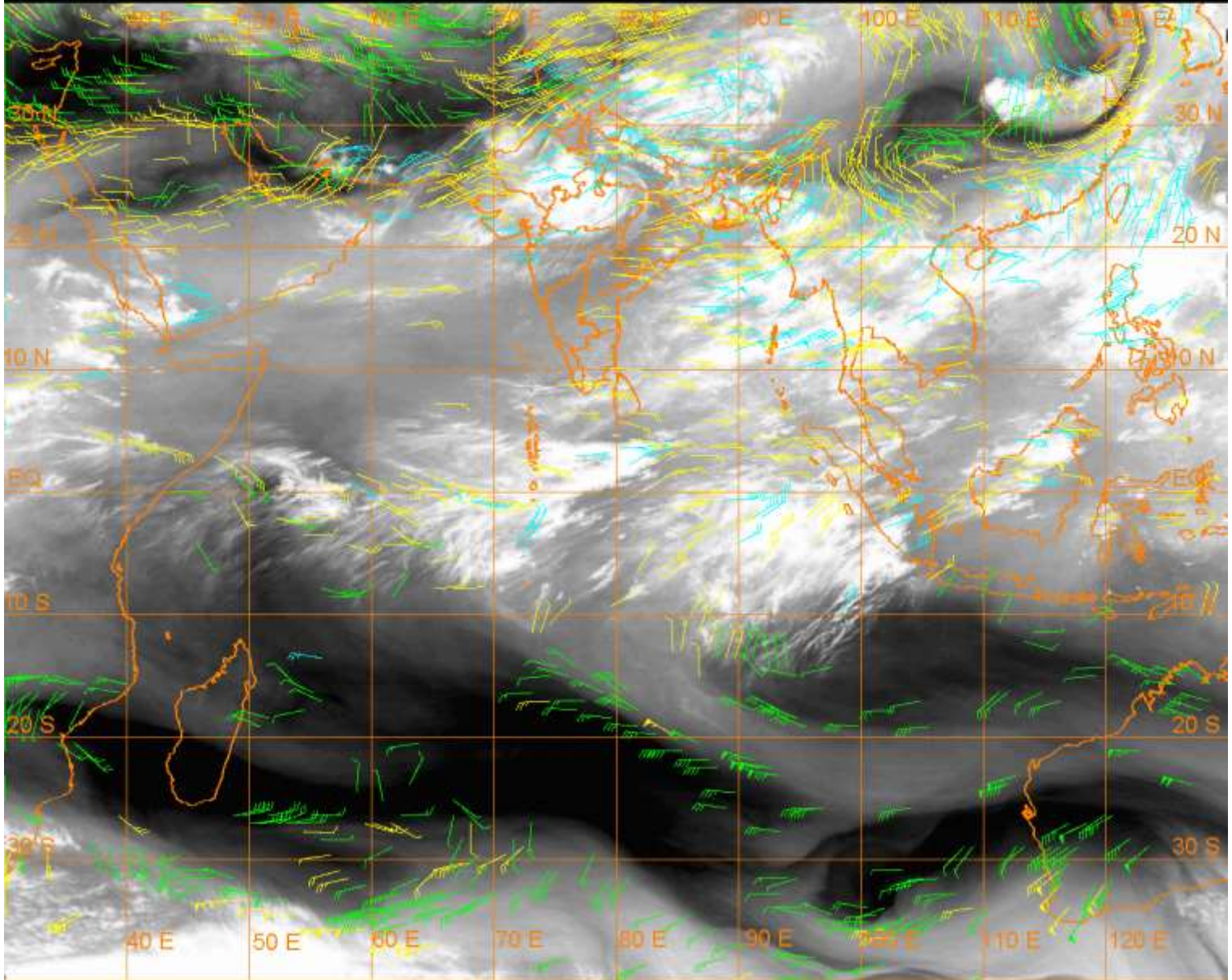
20 Kt

50 Kt

100-250 hPa

251-350 hPa

351-500 hPa



### CLOUDS DESCRIPTION WITHIN INDIA:-

#### NORTH:-

BKN LOW/MED CLOUDS WITH EMBDD INT TO V INT CONVTN OVER N & SW UP (MINIMUM CTT MINUS 84 DEG CEL) (.) SCT LOW/MED CLOUDS WITH EMBDD MOD TO INT CONVTN OVER LADAKH J&K HP EC UTRKND NC PJB EXT SE HARY REST UP AND WK TO MOD CONVTN OVER REST HARY DLH REST PJB REST UTRKND (.)

#### EAST:-

SCT LOW/MED CLOUDS WITH EMBDD INT TO V INT CONVTN OVER GWB NW BHR TRP W& SE ASSAM MIZO MANI BD AND MOD TO INT CONVTN OVER N ORS NE & S JHRKND NE & S BHR NAGA E MEGHA W ARUPR REST GWB SKM REST NE STATES (.) SCT LOW/MED CLOUDS WITH EMBDD WK TO MOD CONVTN OVER CHTGH REST ORS N BHR (.) SCT LOW/MED CLOUDS OVER REST JHRKND REST BHR (.)

#### WEST:-

BKN LOW/MED CLOUDS WITH EMBDD INT TO V INT CONVTN OVER EC RAJ NC MP (MINIMUM CTT MINUS 93 DEG CEL) (.) SCT LOW/MED CLOUDS WITH EMBDD MOD TO INT CONVTN OVER NW RAJ GUJ S MP AND ISOL WK TO MOD CONVTN OVER MAHA & GOA (.)

#### SOUTH:-

SCT LOW/MED CLOUDS WITH EMBDD MOD TO INT CONVTN OVER S KER S TN ANDAMAN ILS AND ISOL WK TO MOD CONVTN OVER TLNGN RYLSM COTL AP KRNTK N KER N TN & NICOBAR ILS (.) SCT LOW/MED CLOUDS OVER LKSDP (.)

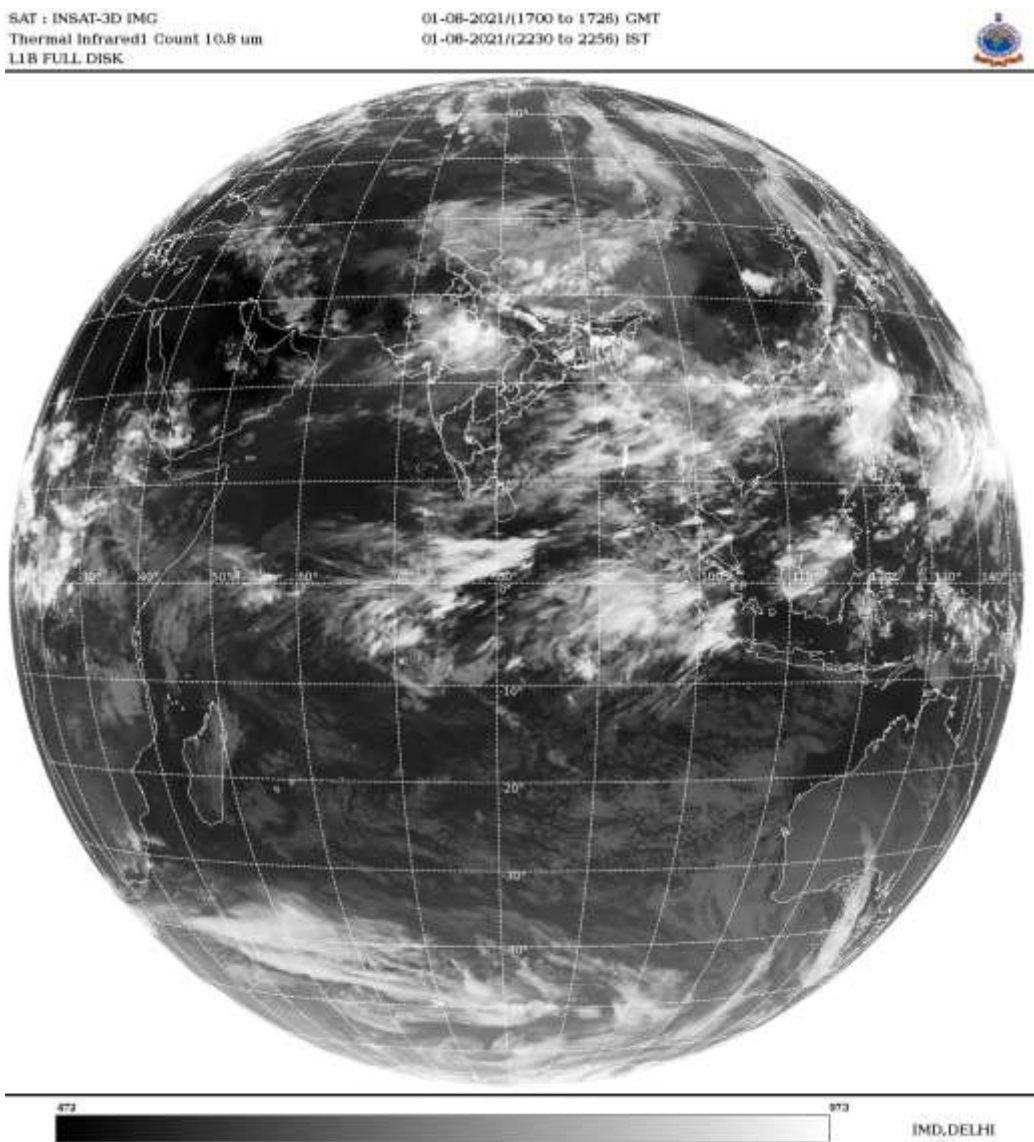
#### ARABIAN SEA:-

SCT LOW/MED CLOUDS WITH EMBDD ISOL WK TO MOD CONVTN OVER EC & SE ARSEA (.)

**BAY OF BENGAL & ANDAMAN SEA:-**

BKN LOW/MED CLOUDS WITH EMBDD INT TO V INT CONVTN OVER NORTH PARTS OF EC BAY AND MOD TO INT CONVTN OVER REST BAY ANDAMAN SEA ARAKAN COAST & GULF OF MARTABAN (.)

**CLOUDS DESCRIPTION OUTSIDE INDIA:-**



SCT LOW/MED CLOUDS WITH EMBDD MOD TO INT CONVTN OVER SRILANKA MALDIVES PAK NEPAL BHUTAN TIBET CHINA MYANMAR THAILAND GULF OF THAILAND CAMBODIA LAOS VIETNAM SUMATRA STR OF MALACCA MALAY PENINSULA BORNEO S CHINA SEA CELEBES ILS PHILIPPINES HAINAN TAIWAN E CHINA SEA YELLOW SEA AND OVER INDIAN OCEAN BET LAT 5.0N TO 10.0S LONG 53.0E TO 103.0E (.)

TOO 01/2310EF=

NNNN

**LEGEND:-**

|        |       |                                                   |
|--------|-------|---------------------------------------------------|
| REGION | NORTH | J&K HP PJB HARY DLH UP UTRKND                     |
|        | EAST  | BHR JHRKND CHTGH ORS WB SKMNORTH- EAST STATES     |
|        | WEST  | RAJ MP GUJ MAHA GOA                               |
|        | SOUTH | TLNGN AP KRNTK KER TN LKSDP ANDAMAN & NICOBAR ILS |

|                                                                     |                        |                                                             |
|---------------------------------------------------------------------|------------------------|-------------------------------------------------------------|
| <b>CLOUD DISTRIBUTION</b>                                           | <b>ISOL</b>            | <b>ISOLATED (LESS THAN 25%)</b>                             |
|                                                                     | <b>SCT</b>             | <b>SCATTERED (25 TO 50%)</b>                                |
|                                                                     | <b>BKN</b>             | <b>BROKEN (51 TO 75%)</b>                                   |
|                                                                     | <b>SLD</b>             | <b>SOLID (GREATER THAN 75%)</b>                             |
| <b>CLOUDS TOP TEMPERATURE</b>                                       | <b>CTT</b>             | <b>CLOUD TOP TEMPERATURE</b>                                |
| <b>CONVECTION</b>                                                   | <b>WK CONVTN</b>       | <b>WEAK CONVECTION<br/>(CTT GREATER THAN -25°C)</b>         |
|                                                                     | <b>MOD CONVTN</b>      | <b>MODERATE CONVECTION<br/>(CTT BETWEEN -25°C TO -40°C)</b> |
|                                                                     | <b>INT CONVTN</b>      | <b>INTENSE CONVECTION<br/>(CTT BETWEEN -41°C TO -70°C)</b>  |
|                                                                     | <b>V INT CONVTN</b>    | <b>VERY INTENSE CONVECTION<br/>(CTT LESS THAN -70°C)</b>    |
| <b>METEOROLOGICAL SUB-DIVISIONS, STATES &amp; UNION TERRITORIES</b> | <b>ARUPR</b>           | <b>ARUNACHAL PRADESH</b>                                    |
|                                                                     | <b>BHR</b>             | <b>BIHAR</b>                                                |
|                                                                     | <b>CHTGH</b>           | <b>CHHATTISGARH</b>                                         |
|                                                                     | <b>COTL AP</b>         | <b>COASTAL ANDHRA PRADESH</b>                               |
|                                                                     | <b>COTL KRNTK</b>      | <b>COASTAL KARNATAKA</b>                                    |
|                                                                     | <b>COTL ORS</b>        | <b>COASTAL ORISSA</b>                                       |
|                                                                     | <b>GUJ</b>             | <b>GUJARAT</b>                                              |
|                                                                     | <b>GWB</b>             | <b>GANGETIC WEST BENGAL</b>                                 |
|                                                                     | <b>HARY</b>            | <b>HARYANA</b>                                              |
|                                                                     | <b>DLH</b>             | <b>DELHI</b>                                                |
|                                                                     | <b>HP</b>              | <b>HIMACHAL PRADESH</b>                                     |
|                                                                     | <b>J&amp;K</b>         | <b>JAMMU AND KASHMIR</b>                                    |
|                                                                     | <b>JHRKND</b>          | <b>JHARKHAND</b>                                            |
|                                                                     | <b>KER</b>             | <b>KERALA</b>                                               |
|                                                                     | <b>KKN</b>             | <b>KONKAN</b>                                               |
|                                                                     | <b>LKSDP</b>           | <b>LAKSHADWEEP</b>                                          |
|                                                                     | <b>M MAHA</b>          | <b>MADHYA MAHARASHTRA</b>                                   |
|                                                                     | <b>MAHA</b>            | <b>MAHARASHTRA</b>                                          |
|                                                                     | <b>MANI</b>            | <b>MANIPUR</b>                                              |
|                                                                     | <b>MEGHA</b>           | <b>MEGHALAYA</b>                                            |
|                                                                     | <b>MIZO</b>            | <b>MIZORAM</b>                                              |
|                                                                     | <b>MP</b>              | <b>MADHYA PRADESH</b>                                       |
|                                                                     | <b>MRTHWD</b>          | <b>MARATHWADA</b>                                           |
|                                                                     | <b>NAGA</b>            | <b>NAGALAND</b>                                             |
|                                                                     | <b>N COTL AP</b>       | <b>NORTH COASTAL ANDHRA PRADESH</b>                         |
|                                                                     | <b>NIK</b>             | <b>NORTH INTERIOR KARNATAKA</b>                             |
|                                                                     | <b>ORS</b>             | <b>ORISSA</b>                                               |
|                                                                     | <b>PJB</b>             | <b>PUNJAB</b>                                               |
|                                                                     | <b>RAJ</b>             | <b>RAJASTHAN</b>                                            |
|                                                                     | <b>RYLSM</b>           | <b>RAYALASEEMA</b>                                          |
|                                                                     | <b>SAU &amp; KUTCH</b> | <b>SAURASHTRA &amp; KUTCH</b>                               |
|                                                                     | <b>SHWB</b>            | <b>SUB-HIMALAYAN WEST BENGAL</b>                            |
|                                                                     | <b>SIK</b>             | <b>SOUTH INTERIOR KARNATAKA</b>                             |
|                                                                     | <b>SKM</b>             | <b>SIKKIM</b>                                               |

|                      |               |                                  |
|----------------------|---------------|----------------------------------|
|                      | <b>TLNGN</b>  | <b>TELANGANA</b>                 |
|                      | <b>TN</b>     | <b>TAMIL NADU</b>                |
|                      | <b>TRP</b>    | <b>TRIPURA</b>                   |
|                      | <b>UP</b>     | <b>UTTAR PRADESH</b>             |
|                      | <b>UTRKND</b> | <b>UTTARAKHAND</b>               |
|                      | <b>VID</b>    | <b>VIDHARBHA</b>                 |
|                      | <b>SHWB</b>   | <b>SUB HIMALAYAN WEST BENGAL</b> |
|                      | <b>GWB</b>    | <b>GANGETIC WEST BENGAL</b>      |
|                      | <b>ARSEA</b>  | <b>ARABIAN SEA</b>               |
|                      | <b>ILS</b>    | <b>ISLANDS</b>                   |
| <b>MISCELLANEOUS</b> | <b>ASSW</b>   | <b>IN ASSOCIATION WITH</b>       |
|                      | <b>ASSTD</b>  | <b>ASSOCIATED</b>                |
|                      | <b>LLC</b>    | <b>LOW LEVEL CIRCULATION</b>     |
|                      | <b>EMBDD</b>  | <b>EMBEDDED</b>                  |
|                      | <b>N/HOOD</b> | <b>NEIGHBOURHOOD</b>             |
|                      | <b>EXT</b>    | <b>EXTREME</b>                   |