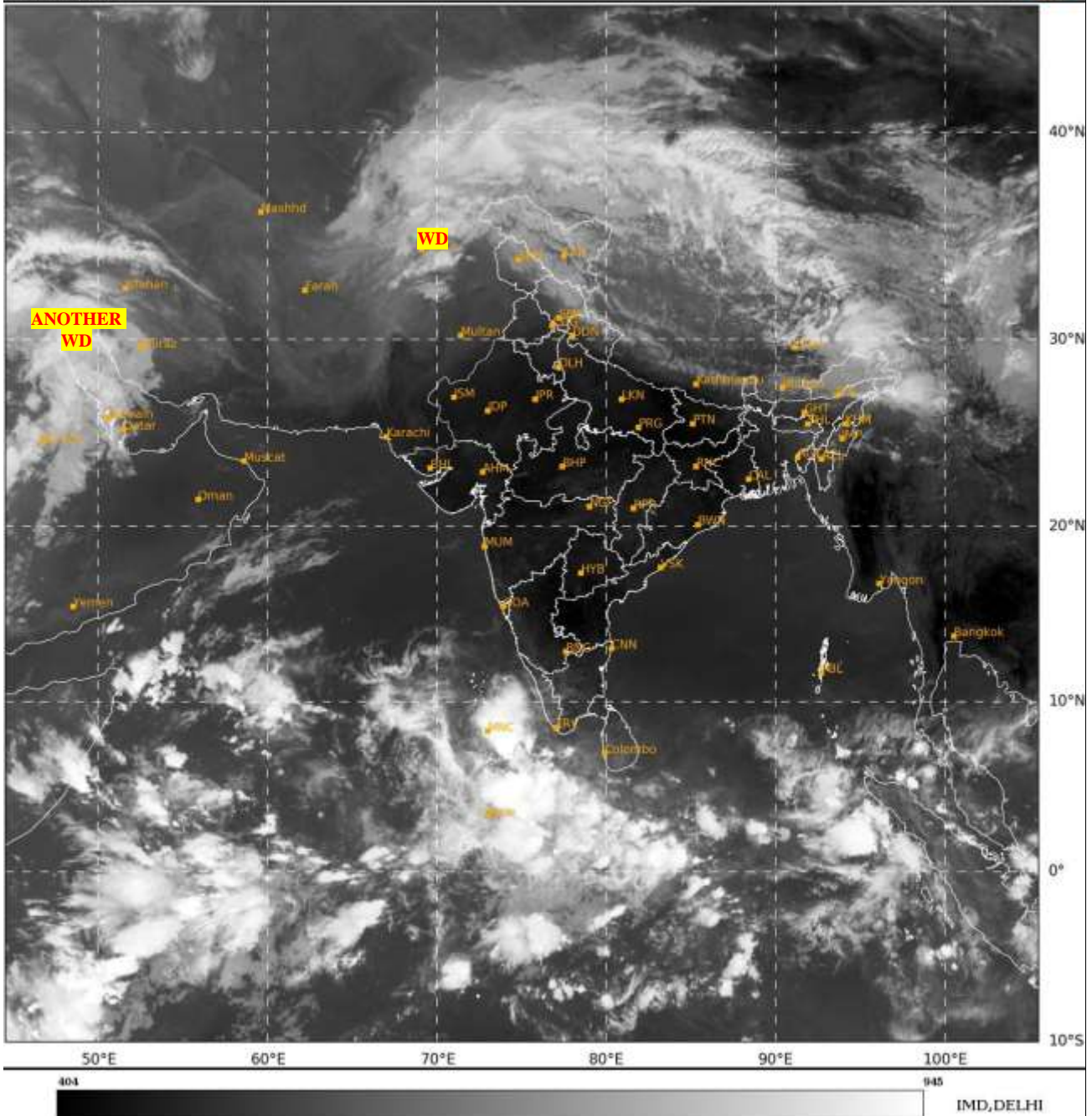




**SATELLITE BULLETIN BASED ON SATELLITE
IMAGERIES AND PRODUCTS**
30.04.2024 TIME 0300 UTC

SAT : INSAT-3D IMG
IMG_TIR1 10.8 um
LIC Mercator

30-04-2024/(0300 to 0326) GMT
30-04-2024/(0830 to 0856) IST



TCIN50 DEMS 300300

SATELLITE BULLETIN BASED ON INSAT-3D PIC OF 300300 UTC (.)

REGION COVERED BETWEEN LAT 50.0°N TO 35.0°S AND LONG 30.0°E TO 125.0°E (.)

SALIENT FEATURES:-

WESTERN DISTURBANCE:-

SCT MULTILAYERED CLOUDS OVER E AFGAN N PAK J&K LADAKH TIBET ADJ CHINA IN ASSW **WD** OVER THE AREA (.)

SCT MULTILAYERED CLOUDS OVER W IRAN PERSIAN GULF AND N/HOOD IN ASSW **ANOTHER WD** OVER THE AREA (.)

CONVECTIVE / THUNDERSTORM ACTIVITY:-

INTENSE TO VERY INTENSE CONVECTIVE / THUNDERSTORM ACTIVITY OBSERVED OVER LKSDP ILS AREA (MINIMUM **CTT MINUS 90 DEG CEL**) (.) MODERATE TO INTENSE CONVECTIVE / THUNDERSTORM ACTIVITY OBSERVED OVER NICOBAR ILS (MINIMUM **CTT MINUS 60 DEG CEL**) ARUPR E ASSAM (MINIMUM **CTT MINUS 45 DEG CEL**) (.)



INSAT-3D 30-APR-2024 03:00 WV IMG

WATER VAPOUR WIND

(1Kt = 0.5 m/s)

10 Kt

15 Kt

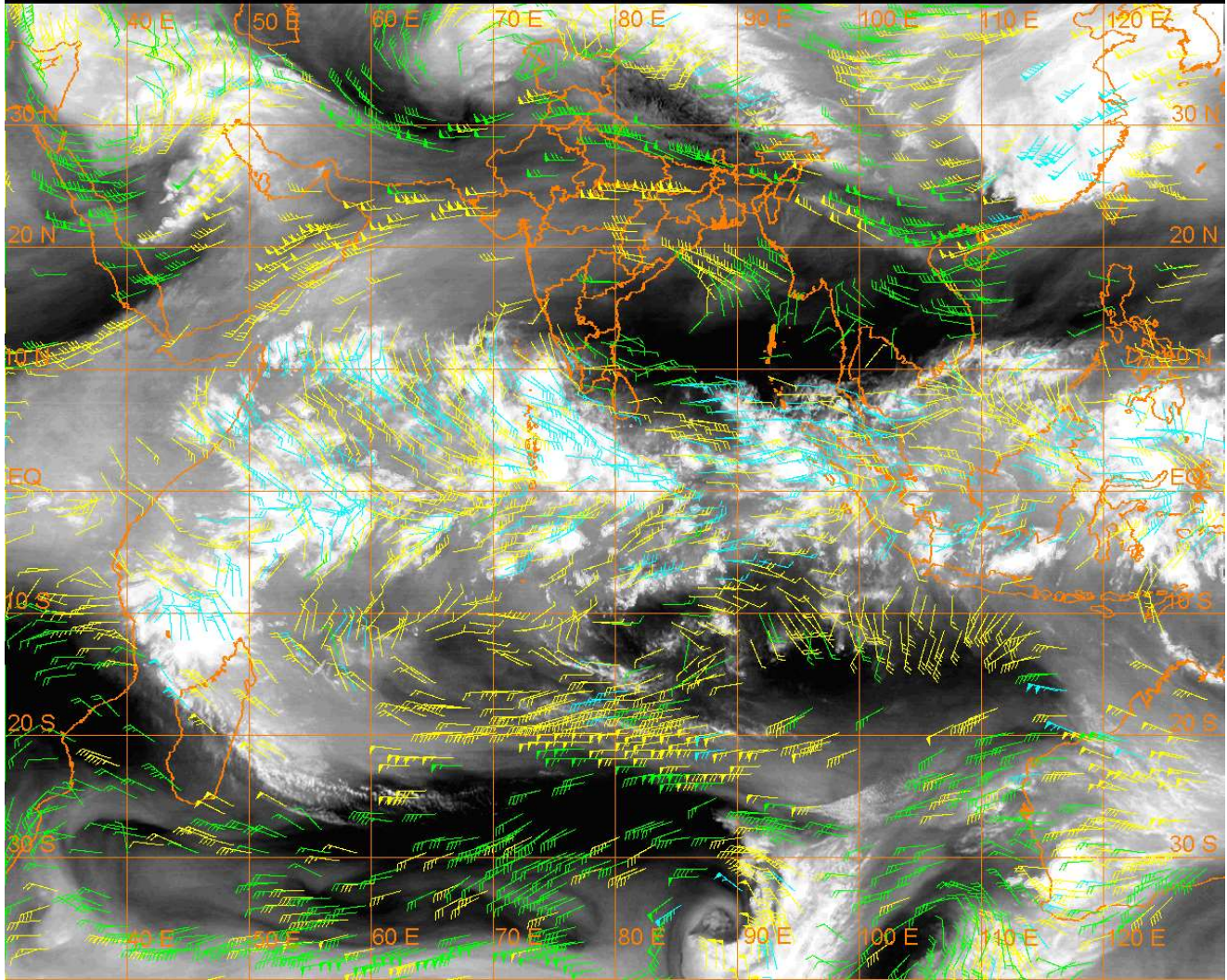
20 Kt

50 Kt

100-250 hPa

251-350 hPa

351-500 hPa



CLOUDS DESCRIPTION WITHIN INDIA:-

NORTH:-

SCT LOW/MED CLOUDS WITH EMBDD ISOL WK TO MOD CONVTN OVER LADAKH J&K N HP N UTRKND (.) ISOL LOW/MED CLOUDS OVER S HP S UTRKND NE HARY UP (.)

EAST:-

SCT LOW/MED CLOUDS WITH EMBDD MOD TO INT CONVTN OVER ARUPR E ASSAM (.) SCT LOW/MED CLOUDS WITH EMBDD ISOL WK CONVTN OVER CENTRAL CHTGH WC ORS SKM NAGA MANI (.) SCT LOW/MED CLOUDS OVER N SHWB REST NE STATES (.)

WEST:-

ISOL TO SCT LOW/MED CLOUDS OVER MP GUJ MAHA GOA (.)

SOUTH:-

SCT LOW/MED CLOUDS WITH EMBDD MOD TO INT CONVTN OVER LKSDP ILS NICOBAR ILS (.) SCT LOW/MED CLOUDS WITH EMBDD ISOL WK CONVTN OVER KER W TN (.) SCT LOW/MED CLOUDS OVER KRNTK S COTL AP E TN (.)

ARABIAN SEA:-

SCT TO BKN LOW/MED CLOUDS WITH EMBDD INT TO V INT CONVTN OVER SOUTH ARSEA MALDIVES AREA LKSDP ILS AREA & COMORIN AREA (.) SCT LOW/MED CLOUDS WITH EMBDD MOD TO INT CONVTN OVER WC ARSEA AND ISOL WK TO MOD CONVTN OVER NW & EC ARSEA (.)

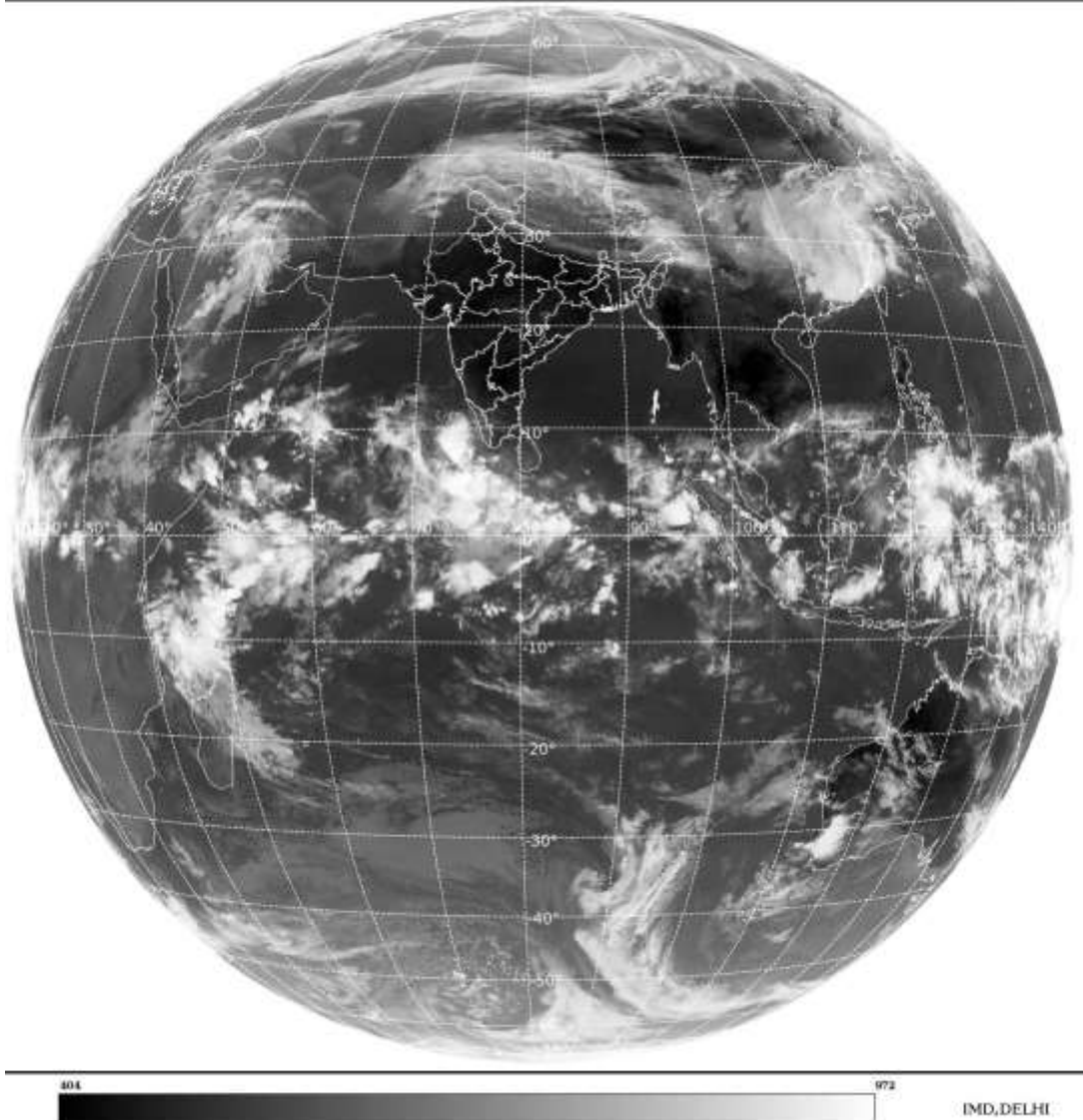
BAY OF BENGAL & ANDAMAN SEA:-

SCT LOW/MED CLOUDS WITH EMBDD MOD TO INT CONVTN OVER SE BAY S ANDAMAN SEA AND ISOL WK TO MOD CONVTN OVER SW BAY (.)

CLOUDS DESCRIPTION OUTSIDE INDIA:-

SAT : INSAT-3D IMG
Thermal Infrared1 Count 10.8 um
L1B FULL DISK

30-04-2024/(0300 to 0326) GMT
30-04-2024/(0830 to 0856) IST



SCT LOW/MED CLOUDS WITH EMBDD MOD TO INT CONVTN OVER MALDIVES N PAK TIBET CHINA YELLOW SEA EAST CHINA SEA N TAIWAN N MYANMAR GULF OF THAILAND S VIETNAM SUMATRA STR OF MALACCA MALAYSIA BORNEO SOUTH CHINA SEA JAVA ILS & SEA CELEBES ILS & SEA S PHILIPPINES SULU SEA N MADAGASCAR N MOZAMBIQUE CHANNEL AND OVER INDIAN OCEAN BET LAT 5.0N TO 20.0S LONG 40.0E TO 100.0E AND BET LAT 20.0S TO 35.0S LONG 90.0E TO 115.0E (.)

TOO 30/0940 HRS IST=

NNNN

LEGEND:-

REGION	NORTH	J&K HP PJB HARY DLH UP UTRKND
	EAST	BHR JHRKND CHTGH ORS WB SKM NORTH- EAST STATES
	WEST	RAJ MP GUJ MAHA GOA
	SOUTH	TLNGN AP KRNTK KER TN LKSDP ANDAMAN & NICOBAR ILS
CLOUD DISTRIBUTION	ISOL	ISOLATED (LESS THAN 25%)
	SCT	SCATTERED (25 TO 50%)
	BKN	BROKEN (51 TO 75%)
	SLD	SOLID (GREATER THAN 75%)

CLOUDS TOP TEMPERATURE	CTT	CLOUD TOP TEMPERATURE
CONVECTION	WK CONV TN	WEAK CONVECTION (CTT GREATER THAN -25°C)
	MOD CONV TN	MODERATE CONVECTION (CTT BETWEEN -25°C TO -40°C)
	INT CONV TN	INTENSE CONVECTION (CTT BETWEEN -41°C TO -70°C)
	V INT CONV TN	VERY INTENSE CONVECTION (CTT LESS THAN -70°C)
METEOROLOGICAL SUB- DIVISIONS, STATES & UNION TERRITORIES	ARUPR	ARUNACHAL PRADESH
	BHR	BIHAR
	CHTGH	CHHATTISGARH
	COTL AP	COASTAL ANDHRA PRADESH
	COTL KRNTK	COASTAL KARNATAKA
	COTL ORS	COASTAL ORISSA
	GUJ	GUJARAT
	GWB	GANGETIC WEST BENGAL
	HARY	HARYANA
	DLH	DELHI
	HP	HIMACHAL PRADESH
	J&K	JAMMU AND KASHMIR
	JHRKND	JHARKHAND
	KER	KERALA
	KKN	KONKAN
	LKSDP	LAKSHADWEEP
	M MAHA	MADHYA MAHARASHTRA
	MAHA	MAHARASHTRA
	MANI	MANIPUR
	MEGHA	MEGHALAYA
	MIZO	MIZORAM
	MP	MADHYA PRADESH
	MRTHWD	MARATHWADA
	NAGA	NAGALAND
	N COTL AP	NORTH COASTAL ANDHRA PRADESH
	NIK	NORTH INTERIOR KARNATAKA
	ORS	ORISSA
	PJB	PUNJAB
RAJ	RAJASTHAN	
RYLSM	RAYALASEEMA	
SAU & KUTCH	SAURASHTRA & KUTCH	
SHWB	SUB-HIMALAYAN WEST BENGAL	
SIK	SOUTH INTERIOR KARNATAKA	
SKM	SIKKIM	
TLNGN	TELANGANA	
TN	TAMIL NADU	
TRP	TRIPURA	
UP	UTTAR PRADESH	

	UTRKND	UTTARAKHAND
	VID	VIDHARBHA
	SHWB	SUB HIMALAYAN WEST BENGAL
	GWB	GANGETIC WEST BENGAL
	ARSEA	ARABIAN SEA
	ILS	ISLANDS
MISCELLANEOUS	ASSW	IN ASSOCIATION WITH
	ASSTD	ASSOCIATED
	LLC	LOW LEVEL CIRCULATION
	EMBDD	EMBEDDED
	N/HOOD	NEIGHBOURHOOD
	EXT	EXTREME