

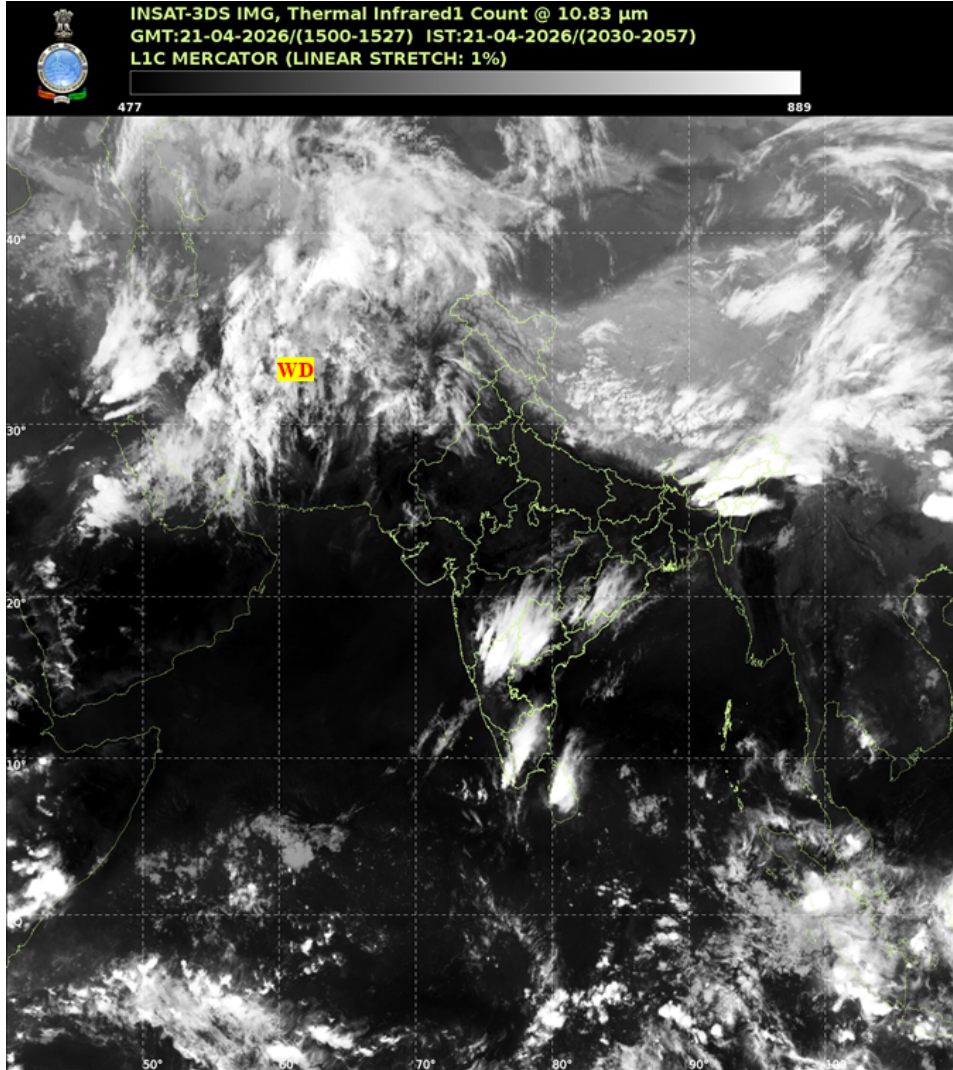


भारत मौसम विज्ञान विभाग  
पृथ्वी विज्ञान मंत्रालय  
India Meteorological Department  
Ministry of Earth Sciences



**SATELLITE BULLETIN BASED ON SATELLITE IMAGERIES AND PRODUCTS**

Date: 2026-04-21 Time: 15:00:00 UTC



TCIN50 DEMS 211500

SATELLITE BULLETIN BASED ON INSAT-3DS PIC OF 211500 UTC (.)

REGION COVERED BETWEEN LAT 50.0°N TO 35.0°S AND LONG 40.0°E TO 125.0°E (.)

**SALIENT FEATURES:**

**WESTERN DISTURBANCE (WD):-**

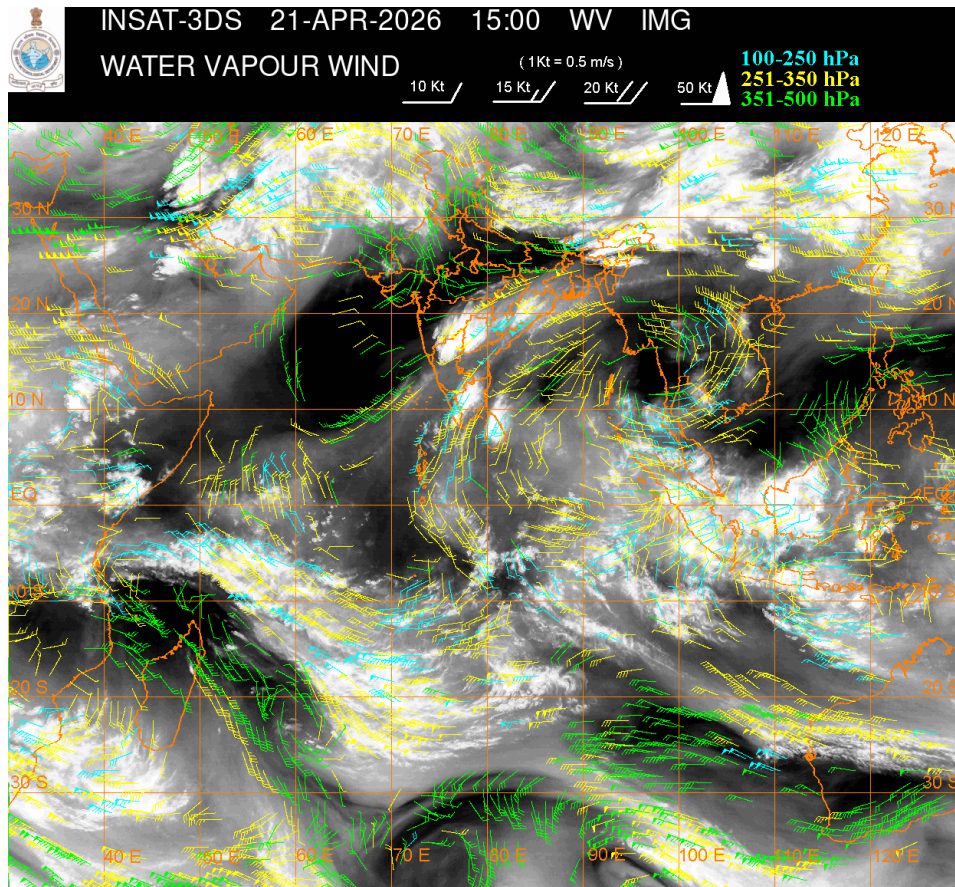
SCT TO BKN MULTILAYERED CLOUDS OVER PERSIAN GULF IRAN AFGAN ADJ PAK AND N/HOOD IN ASSW WD OVER THE AREA (.)

**CONVECTIVE / THUNDERSTORM ACTIVITY:-**

INTENSE TO VERY INTENSE CONVECTIVE / THUNDERSTORM ACTIVITY OVER MEGHA ASSAM

ARUPR NAGA MANI NIK TLNGN S KER TN (MINIMUM CTT MINUS 60-80 DEGREE CELSIUS) (.)

MODERATE TO INTENSE CONVECTIVE / THUNDERSTORM ACTIVITY OVER S CHTGH ORS SKM  
SOUTH MADHYA MAHA MRTHWD VID (MINIMUM CTT MINUS 40-60 DEGREE CELSIUS) (.)



**CLOUD DESCRIPTION WITHIN INDIA:**

**NORTH:**

SCT LOW/MED CLOUDS WITH EMBDD ISOL WK TO MOD CONVTN OVER LADAKH J&K PJB W HARY (.) ISOL TO SCT LOW/MED CLOUDS OVER HP UTRKND (.)

**EAST:**

SCT TO BKN LOW/MED CLOUDS WITH EMBDD INT TO V INT CONVTN OVER MEGHA ASSAM ARUPR NAGA MANI AND MOD TO INT CONVTN OVER S CHTGH ORS SKM (.) SCT LOW/MED CLOUDS WITH EMBDD ISOL WK TO MOD CONVTN OVER N CHTGH JHRKND GWB SHWB & BD (.) ISOL TO SCT LOW/MED CLOUDS OVER BHR MIZO TRP (.)

**WEST:**

SCT TO BKN LOW/MED CLOUDS WITH EMBDD MOD TO INT CONVTN OVER SOUTH MADHYA MAHA MRTHWD VID (.) SCT LOW/MED CLOUDS WITH EMBDD ISOL WK TO MOD CONVTN OVER W RAJ E MP NORTH MADHYA MAHA (.) ISOL TO SCT LOW/MED CLOUDS OVER E RAJ W MP GUJ (.)

**SOUTH:**

SCT TO BKN LOW/MED CLOUDS WITH EMBDD INT TO V INT CONVTN OVER NIK TLNGN S KER TN (.) SCT LOW/MED CLOUDS WITH EMBDD ISOL WK TO MOD CONVTN OVER SIK RYLSM COTL AP LKSDP ILS AREA NICOBAR ILS AREA (.) SCT LOW/MED CLOUDS OVER COTL KRNTK N KER ANDAMAN ILS (.)

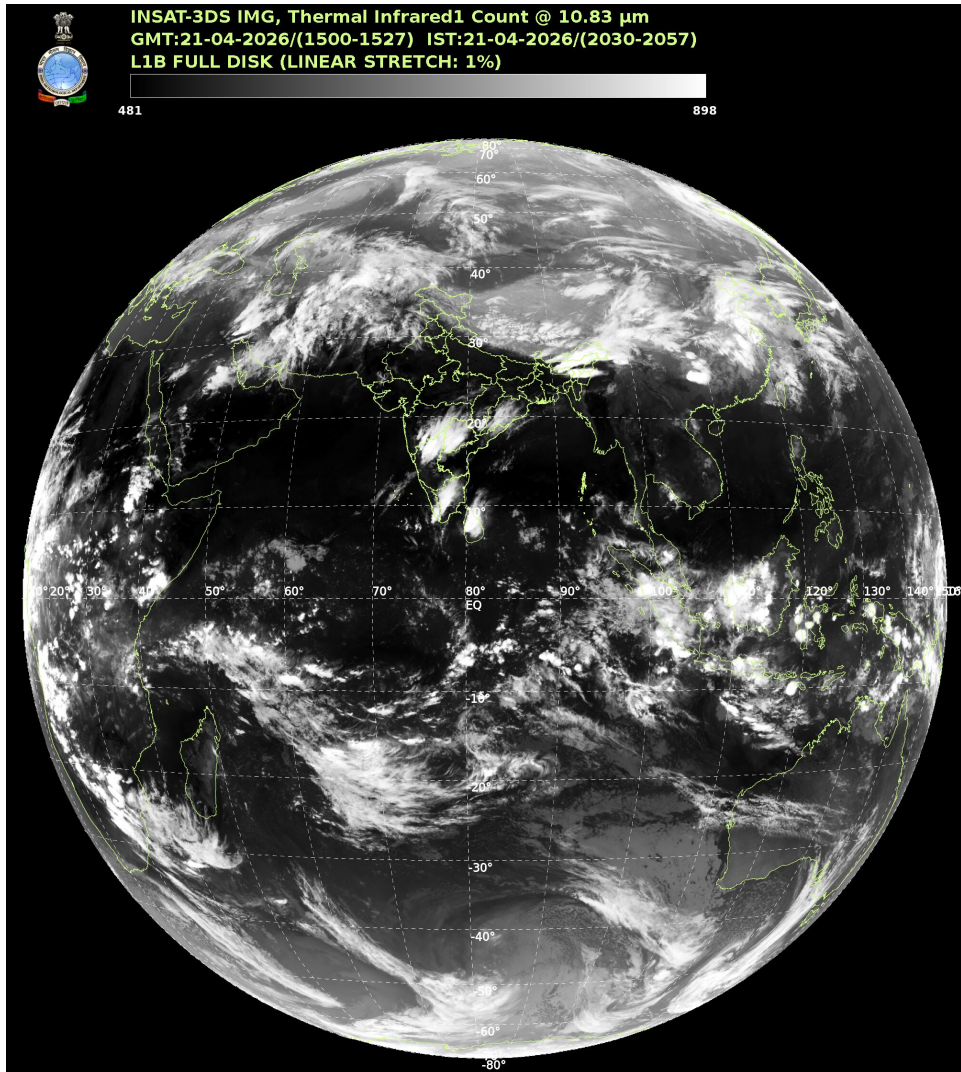
**ARABIAN SEA:**

SCT LOW/MED CLOUDS WITH EMBDD ISOL WK TO MOD CONVTN OVER SOUTH ARSEA LKSDP ILS AREA MALDIVES AND COMORIN AREA (.)

**BAY OF BENGAL & ANDAMAN SEA:**

SCT LOW/MED CLOUDS WITH EMBDD MOD TO INT CONVTN OVER SOUTH BAY AND ANDAMAN SEA (.) SCT LOW/MED CLOUDS WITH EMBDD ISOL WK TO MOD CONVTN OVER NW & WC BAY (.)

**CLOUD DESCRIPTION OUTSIDE INDIA:**



SCT LOW/MED CLOUDS WITH EMBDD MOD TO INT CONVTN OVER SRI LANKA MALDIVES AREA PAK NEPAL BHUTAN TIBET CHINA YELLOW SEA EAST CHINA SEA TAIWAN NORTH MYANMAR GULF OF THAILAND CAMBODIA VIETNAM GULF OF TONKIN SUMATRA STR OF MALACCA MALAYSIA BORNEO SOUTH CHINA SEA JAVA ILS & SEA CELEBES ILS & SEA MADAGASCAR MOZAMBIQUE CHANNEL AND OVER INDIAN OCEAN BET LAT 5.0N TO 35.0S LONG 40.0E TO 120.0E (.)

T00 21/2130 HRS IST

NNNN

**LEGEND**

| REGION |                                               |
|--------|-----------------------------------------------|
| NORTH  | J&K HP UTRKND PJB HARY DLH UP                 |
| EAST   | BHR JHRKND CHTGH ORS WB SKM NORTH-EAST STATES |
| WEST   | RAJ MP GUJ MAHA GOA                           |

|                                                                     |                                                              |
|---------------------------------------------------------------------|--------------------------------------------------------------|
| <b>SOUTH</b>                                                        | <b>TLNGN AP KRNTK KER TN LKSDP ANDAMAN &amp; NICOBAR ILS</b> |
| <b>CLOUD DISTRIBUTION</b>                                           |                                                              |
| <b>ISOL</b>                                                         | <b>ISOLATED (LESS THAN 25%)</b>                              |
| <b>SCT</b>                                                          | <b>SCATTERED (25 TO 50%)</b>                                 |
| <b>BKN</b>                                                          | <b>BROKEN (51 TO 75%)</b>                                    |
| <b>SLD</b>                                                          | <b>SOLID (GREATER THAN 75%)</b>                              |
| <b>CLOUDS TOP TEMPERATURE</b>                                       |                                                              |
| <b>CTT</b>                                                          | <b>CLOUD TOP TEMPERATURE</b>                                 |
| <b>CONVECTION</b>                                                   |                                                              |
| <b>WK CONVTN</b>                                                    | <b>WEAK CONVECTION (CTT GREATER THAN -25°C)</b>              |
| <b>MOD CONVTN</b>                                                   | <b>MODERATE CONVECTION (CTT BETWEEN -25°C TO -40°C)</b>      |
| <b>INT CONVTN</b>                                                   | <b>INTENSE CONVECTION (CTT BETWEEN -41°C TO -70°C)</b>       |
| <b>V INT CONVTN</b>                                                 | <b>VERY INTENSE CONVECTION (CTT LESS THAN -70°C)</b>         |
| <b>METEOROLOGICAL SUB-DIVISIONS, STATES &amp; UNION TERRITORIES</b> |                                                              |
| <b>J&amp;K</b>                                                      | <b>JAMMU AND KASHMIR</b>                                     |
| <b>HP</b>                                                           | <b>HIMACHAL PRADESH</b>                                      |
| <b>UTRKND</b>                                                       | <b>UTTARAKHAND</b>                                           |
| <b>PJB</b>                                                          | <b>PUNJAB</b>                                                |
| <b>HARY</b>                                                         | <b>HARYANA</b>                                               |
| <b>DLH</b>                                                          | <b>DELHI</b>                                                 |
| <b>BHR</b>                                                          | <b>BIHAR</b>                                                 |
| <b>JHRKND</b>                                                       | <b>JHARKHAND</b>                                             |
| <b>CHTGH</b>                                                        | <b>CHHATTISGARH</b>                                          |
| <b>ORS</b>                                                          | <b>ORISSA</b>                                                |
| <b>GWB</b>                                                          | <b>GANGETIC WEST BENGAL</b>                                  |
| <b>SHWB</b>                                                         | <b>SUB-HIMALAYAN WEST BENGAL</b>                             |
| <b>SKM</b>                                                          | <b>SIKKIM</b>                                                |
| <b>ARUPR</b>                                                        | <b>ARUNACHAL PRADESH</b>                                     |
| <b>ASSAM</b>                                                        | <b>ASSAM</b>                                                 |
| <b>MEGHA</b>                                                        | <b>MEGHALAYA</b>                                             |
| <b>MANI</b>                                                         | <b>MANIPUR</b>                                               |
| <b>MIZO</b>                                                         | <b>MIZORAM</b>                                               |
| <b>TRP</b>                                                          | <b>TRIPURA</b>                                               |
| <b>RAJ</b>                                                          | <b>RAJASTHAN</b>                                             |

|                        |                                 |
|------------------------|---------------------------------|
| <b>MP</b>              | <b>MADHYA PRADESH</b>           |
| <b>GUJ</b>             | <b>GUJARAT</b>                  |
| <b>SAU &amp; KUTCH</b> | <b>SAURASHTRA &amp; KUTCH</b>   |
| <b>MAHA</b>            | <b>MAHARASHTRA</b>              |
| <b>M MAHA</b>          | <b>MADHYA MAHARASHTRA</b>       |
| <b>MRTHWD</b>          | <b>MARATHWADA</b>               |
| <b>VID</b>             | <b>VIDARBHA</b>                 |
| <b>KKN</b>             | <b>KONKAN</b>                   |
| <b>TLNGN</b>           | <b>TELANGANA</b>                |
| <b>RYLSM</b>           | <b>RAYALSEEMA</b>               |
| <b>COTL AP</b>         | <b>COASTAL ANDHRA PRADESH</b>   |
| <b>NIK</b>             | <b>NORTH INTERIOR KARNATAKA</b> |
| <b>SIK</b>             | <b>SOUTH INTERIOR KARNATAKA</b> |
| <b>COTL KRNTK</b>      | <b>COASTAL KARNATAKA</b>        |
| <b>KER</b>             | <b>KERALA</b>                   |
| <b>TN</b>              | <b>TAMILNADU</b>                |
| <b>LKSDP</b>           | <b>LAKSHADWEEP</b>              |
| <b>ILS</b>             | <b>ISLANDS</b>                  |
| <b>ARSEA</b>           | <b>ARABIAN SEA</b>              |
| <b>MISCELLANEOUS</b>   |                                 |
| <b>ASSW</b>            | <b>IN ASSOCIATION WITH</b>      |
| <b>ASSTD</b>           | <b>ASSOCIATED</b>               |
| <b>LLC</b>             | <b>LOW LEVEL CIRCULATION</b>    |
| <b>EMBDD</b>           | <b>EMBEDDED</b>                 |
| <b>N/HOOD</b>          | <b>NEIGHBOURHOOD</b>            |
| <b>EXT</b>             | <b>EXTREME</b>                  |